



Bill Barrett Corporation

Bill Barrett Corp.

Garfield County, Colorado

MDP 6 Pad

GGU Miller 24B-32-691

Wellbore #1

Survey: Surveys

Standard Survey Report

01 November, 2010

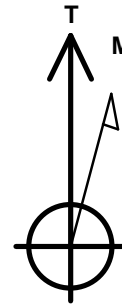
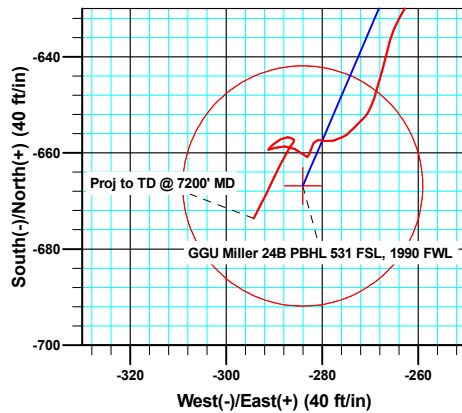
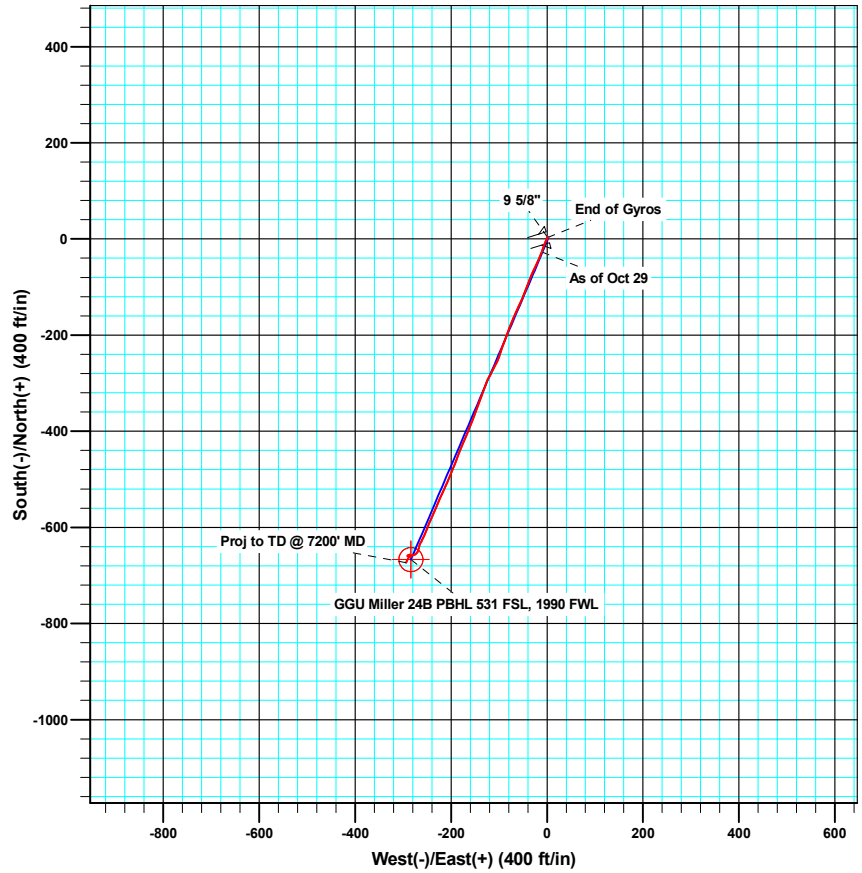
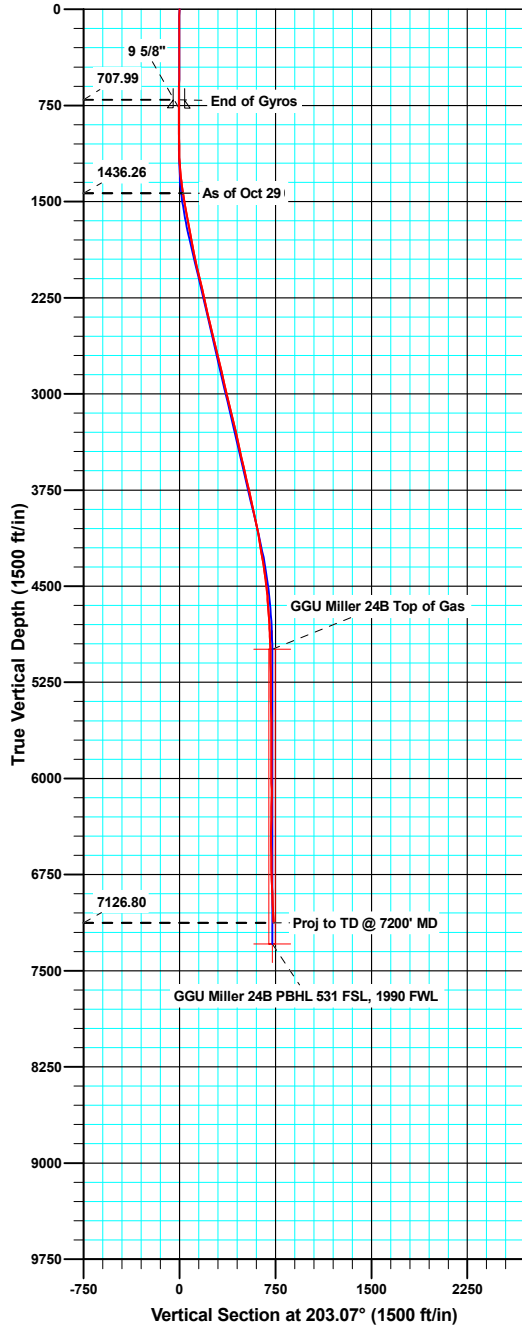




WELL DETAILS: GGU Miller 24B-32-691

Ground Level: 6120.00

North American Datum 1983 , US State Plane 1983 , Colorado Central Zone
 +N/-S +E/-W Northing Easting Latitude Longitude
 0.00 0.00 1606557.27 2413256.68 39° 28' 49.23 N 107° 34' 44.01 W



Azimuths to True North
 Magnetic North: 10.22°

Magnetic Field
 Strength: 52392.4snT
 Dip Angle: 65.83°
 Date: 10/14/2010
 Model: IGRF200510

ANNOTATIONS

TVD	MD	Inc	Azi	+N/-S	+E/-W	VSect	Departure	Annotation
1436.26	1438.00	9.30	200.70	-26.56	-11.17	28.82	33.85	As of Oct 29
7126.80	7200.00	2.50	206.00	-673.61	-294.24	735.04	763.53	Proj to TD @ 7200' MD



Company:	Bill Barrett Corp.	Local Co-ordinate Reference:	Well GGU Miller 24B-32-691
Project:	Garfield County, Colorado	TVD Reference:	KB @ 6142.00ft
Site:	MDP 6 Pad	MD Reference:	KB @ 6142.00ft
Well:	GGU Miller 24B-32-691	North Reference:	True
Wellbore:	Wellbore #1	Survey Calculation Method:	Minimum Curvature
Design:	Wellbore #1	Database:	Compass VM

Project	Garfield County, Colorado		
Map System:	US State Plane 1983	System Datum:	Mean Sea Level
Geo Datum:	North American Datum 1983		
Map Zone:	Colorado Central Zone		

Site	MDP 6 Pad				
Site Position:		Northing:	1,606,603.61 usft	Latitude:	39° 28' 49.69 N
From:	Lat/Long	Easting:	2,413,270.17 usft	Longitude:	107° 34' 43.85 W
Position Uncertainty:	0.00 ft	Slot Radius:	1.10 ft	Grid Convergence:	-1.31 °

Well	GGU Miller 24B-32-691					
Well Position	+N/-S	0.00 ft	Northing:	1,606,557.27 usft	Latitude:	39° 28' 49.23 N
	+E/-W	0.00 ft	Easting:	2,413,256.69 usft	Longitude:	107° 34' 44.01 W
Position Uncertainty		0.00 ft	Wellhead Elevation:	ft	Ground Level:	6,120.00 ft

Wellbore	Wellbore #1				
Magnetics	Model Name	Sample Date	Declination (°)	Dip Angle (°)	Field Strength (nT)
	IGRF200510	10/14/10	10.22	65.83	52,392

Design	Wellbore #1				
Audit Notes:					
Version:	1.0	Phase:	ACTUAL	Tie On Depth:	0.00
Vertical Section:	Depth From (TVD) (ft)	+N/-S (ft)	+E/-W (ft)	Direction (°)	
	0.00	0.00	0.00	203.07	

Survey Program	Date	11/01/10			
From (ft)	To (ft)	Survey (Wellbore)	Tool Name	Description	
50.00	708.00	Gyro Surveys (Wellbore #1)	MWD	MWD - Standard	
881.00	7,200.00	Surveys (Wellbore #1)	MWD	MWD - Standard	

Survey										
Measured Depth (ft)	Inclination (°)	Azimuth (°)	Vertical Depth (ft)	+N/-S (ft)	+E/-W (ft)	Vertical Section (ft)	Dogleg Rate (°/100ft)	Build Rate (°/100ft)	Turn Rate (°/100ft)	
708.00	0.23	70.39	707.99	3.17	1.18	-3.38	0.00	0.00	0.00	
770.40	0.22	73.19	770.39	3.24	1.41	-3.54	0.03	-0.02	4.48	
9 5/8"										
881.00	0.20	78.90	880.99	3.34	1.80	-3.78	0.03	-0.02	5.16	
973.00	0.40	233.90	972.99	3.18	1.70	-3.60	0.64	0.22	168.48	
1,065.00	0.80	236.40	1,064.98	2.64	0.91	-2.78	0.44	0.43	2.72	
1,157.00	2.50	209.40	1,156.94	0.54	-0.61	-0.25	1.98	1.85	-29.35	
1,250.00	4.70	202.20	1,249.75	-4.76	-3.05	5.57	2.41	2.37	-7.74	
1,343.00	7.20	199.70	1,342.24	-13.77	-6.45	15.20	2.70	2.69	-2.69	
1,438.00	9.30	200.70	1,436.26	-26.56	-11.17	28.82	2.22	2.21	1.05	

Company:	Bill Barrett Corp.	Local Co-ordinate Reference:	Well GGU Miller 24B-32-691
Project:	Garfield County, Colorado	TVD Reference:	KB @ 6142.00ft
Site:	MDP 6 Pad	MD Reference:	KB @ 6142.00ft
Well:	GGU Miller 24B-32-691	North Reference:	True
Wellbore:	Wellbore #1	Survey Calculation Method:	Minimum Curvature
Design:	Wellbore #1	Database:	Compass VM

Survey										
Measured Depth (ft)	Inclination (°)	Azimuth (°)	Vertical Depth (ft)	+N/-S (ft)	+E/-W (ft)	Vertical Section (ft)	Dogleg Rate (°/100ft)	Build Rate (°/100ft)	Turn Rate (°/100ft)	
1,534.00	9.80	202.90	1,530.93	-41.34	-17.09	44.74	0.64	0.52	2.29	
1,629.00	10.00	204.50	1,624.51	-56.30	-23.66	61.07	0.36	0.21	1.68	
1,724.00	10.30	206.30	1,718.02	-71.42	-30.85	77.79	0.46	0.32	1.89	
1,820.00	11.20	200.10	1,812.34	-87.87	-37.85	95.67	1.53	0.94	-6.46	
1,915.00	11.70	201.40	1,905.45	-105.50	-44.54	114.52	0.59	0.53	1.37	
2,011.00	12.30	203.20	1,999.35	-123.96	-52.12	134.47	0.74	0.63	1.88	
2,106.00	13.20	204.20	2,092.01	-143.16	-60.55	155.43	0.98	0.95	1.05	
2,201.00	13.40	205.10	2,184.46	-163.02	-69.67	177.28	0.30	0.21	0.95	
2,296.00	12.80	200.00	2,276.99	-182.88	-77.94	198.79	1.37	-0.63	-5.37	
2,391.00	13.30	200.10	2,369.54	-203.03	-85.29	220.21	0.53	0.53	0.11	
2,487.00	13.30	199.80	2,462.96	-223.79	-92.83	242.26	0.07	0.00	-0.31	
2,582.00	13.40	199.40	2,555.40	-244.45	-100.18	264.16	0.14	0.11	-0.42	
2,677.00	13.50	207.30	2,647.80	-264.69	-108.93	286.21	1.94	0.11	8.32	
2,773.00	13.50	208.80	2,741.15	-284.47	-119.46	308.53	0.36	0.00	1.56	
2,868.00	13.20	200.00	2,833.59	-304.38	-128.52	330.40	2.16	-0.32	-9.26	
2,963.00	13.20	200.40	2,926.08	-324.74	-136.01	352.06	0.10	0.00	0.42	
3,059.00	13.30	201.00	3,019.52	-345.32	-143.79	374.05	0.18	0.10	0.63	
3,154.00	13.40	198.30	3,111.96	-365.97	-151.16	395.94	0.66	0.11	-2.84	
3,249.00	13.40	202.80	3,204.37	-386.57	-158.88	417.92	1.10	0.00	4.74	
3,345.00	13.00	202.90	3,297.84	-406.77	-167.39	439.84	0.42	-0.42	0.10	
3,440.00	12.90	202.70	3,390.42	-426.40	-175.64	461.13	0.12	-0.11	-0.21	
3,535.00	13.00	202.10	3,483.00	-446.08	-183.75	482.41	0.18	0.11	-0.63	
3,631.00	12.60	200.90	3,576.62	-465.87	-191.55	503.67	0.50	-0.42	-1.25	
3,726.00	12.70	203.70	3,669.31	-485.11	-199.45	524.47	0.65	0.11	2.95	
3,822.00	12.40	202.00	3,763.02	-504.33	-207.55	545.33	0.50	-0.31	-1.77	
3,917.00	12.80	205.20	3,855.73	-523.31	-215.85	566.04	0.85	0.42	3.37	
4,013.00	12.10	203.80	3,949.48	-542.14	-224.44	586.73	0.79	-0.73	-1.46	
4,108.00	11.50	203.00	4,042.47	-559.97	-232.16	606.16	0.65	-0.63	-0.84	
4,204.00	10.20	204.40	4,136.75	-576.52	-239.41	624.22	1.38	-1.35	1.46	
4,299.00	9.40	202.70	4,230.36	-591.33	-245.88	640.39	0.90	-0.84	-1.79	
4,395.00	8.90	200.90	4,325.14	-605.50	-251.55	655.65	0.60	-0.52	-1.88	
4,489.00	8.10	204.00	4,418.11	-618.35	-256.84	669.54	0.98	-0.85	3.30	
4,585.00	6.20	211.00	4,513.36	-628.97	-262.26	681.44	2.17	-1.98	7.29	
4,680.00	4.00	196.40	4,607.98	-636.55	-265.84	689.81	2.67	-2.32	-15.37	
4,775.00	3.70	192.70	4,702.77	-642.72	-267.45	696.12	0.41	-0.32	-3.89	
4,871.00	3.80	199.40	4,798.56	-648.74	-269.19	702.34	0.47	0.10	6.98	
4,966.00	1.80	226.20	4,893.45	-652.74	-271.31	706.85	2.46	-2.11	28.21	
5,062.00	2.30	223.90	4,989.39	-655.17	-273.73	710.04	0.53	0.52	-2.40	
5,157.00	0.90	253.70	5,084.35	-656.76	-275.77	712.30	1.67	-1.47	31.37	
5,252.00	1.50	249.30	5,179.33	-657.41	-277.65	713.63	0.64	0.63	-4.63	
5,348.00	0.90	294.40	5,275.31	-657.54	-279.51	714.48	1.12	-0.63	46.98	
5,443.00	0.80	259.60	5,370.30	-657.35	-280.84	714.83	0.54	-0.11	-36.63	
5,538.00	0.60	208.20	5,465.29	-657.91	-281.73	715.69	0.67	-0.21	-54.11	

Company:	Bill Barrett Corp.	Local Co-ordinate Reference:	Well GGU Miller 24B-32-691
Project:	Garfield County, Colorado	TVD Reference:	KB @ 6142.00ft
Site:	MDP 6 Pad	MD Reference:	KB @ 6142.00ft
Well:	GGU Miller 24B-32-691	North Reference:	True
Wellbore:	Wellbore #1	Survey Calculation Method:	Minimum Curvature
Design:	Wellbore #1	Database:	Compass VM

Measured Depth (ft)	Inclination (°)	Azimuth (°)	Vertical Depth (ft)	+N/-S (ft)	+E/-W (ft)	Vertical Section (ft)	Dogleg Rate (°/100ft)	Build Rate (°/100ft)	Turn Rate (°/100ft)
5,634.00	1.50	200.10	5,561.27	-659.53	-282.40	717.45	0.95	0.94	-8.44
5,729.00	0.40	238.80	5,656.26	-660.87	-283.11	718.96	1.28	-1.16	40.74
5,824.00	1.20	321.40	5,751.25	-660.26	-284.02	718.75	1.28	0.84	86.95
5,920.00	1.30	287.80	5,847.23	-659.15	-285.68	718.38	0.76	0.10	-35.00
6,015.00	1.30	280.10	5,942.21	-658.63	-287.77	718.72	0.18	0.00	-8.11
6,110.00	1.50	247.20	6,037.18	-658.92	-289.97	719.85	0.86	0.21	-34.63
6,205.00	0.20	313.30	6,132.17	-659.29	-291.24	720.69	1.51	-1.37	69.58
6,301.00	1.50	51.40	6,228.16	-658.39	-290.38	719.52	1.61	1.35	102.19
6,396.00	1.00	59.20	6,323.13	-657.19	-288.70	717.76	0.55	-0.53	8.21
6,491.00	1.00	89.10	6,418.12	-656.75	-287.16	716.75	0.54	0.00	31.47
6,587.00	0.60	135.70	6,514.11	-657.10	-285.97	716.61	0.76	-0.42	48.54
6,682.00	0.90	223.20	6,609.10	-658.00	-286.13	717.50	1.12	0.32	92.11
6,777.00	1.90	208.20	6,704.08	-659.93	-287.39	719.77	1.11	1.05	-15.79
6,873.00	1.80	206.60	6,800.03	-662.68	-288.81	722.86	0.12	-0.10	-1.67
6,968.00	2.10	204.80	6,894.97	-665.60	-290.21	726.09	0.32	0.32	-1.89
7,064.00	2.00	208.60	6,990.91	-668.66	-291.75	729.51	0.18	-0.10	3.96
7,153.00	2.50	206.00	7,079.84	-671.77	-293.35	733.00	0.57	0.56	-2.92
7,200.00	2.50	206.00	7,126.80	-673.61	-294.24	735.04	0.00	0.00	0.00

Measured Depth (ft)	Vertical Depth (ft)	Name	Casing Diameter (ft)	Hole Diameter (ft)
770.40	770.39	9 5/8"	0.80	1.02

Measured Depth (ft)	Vertical Depth (ft)	Local Coordinates		Comment
		+N/-S (ft)	+E/-W (ft)	
1,438.00	1,436.26	-26.56	-11.17	As of Oct 29
7,200.00	7,126.80	-673.61	-294.24	Proj to TD @ 7200' MD

Checked By: _____ Approved By: _____ Date: _____