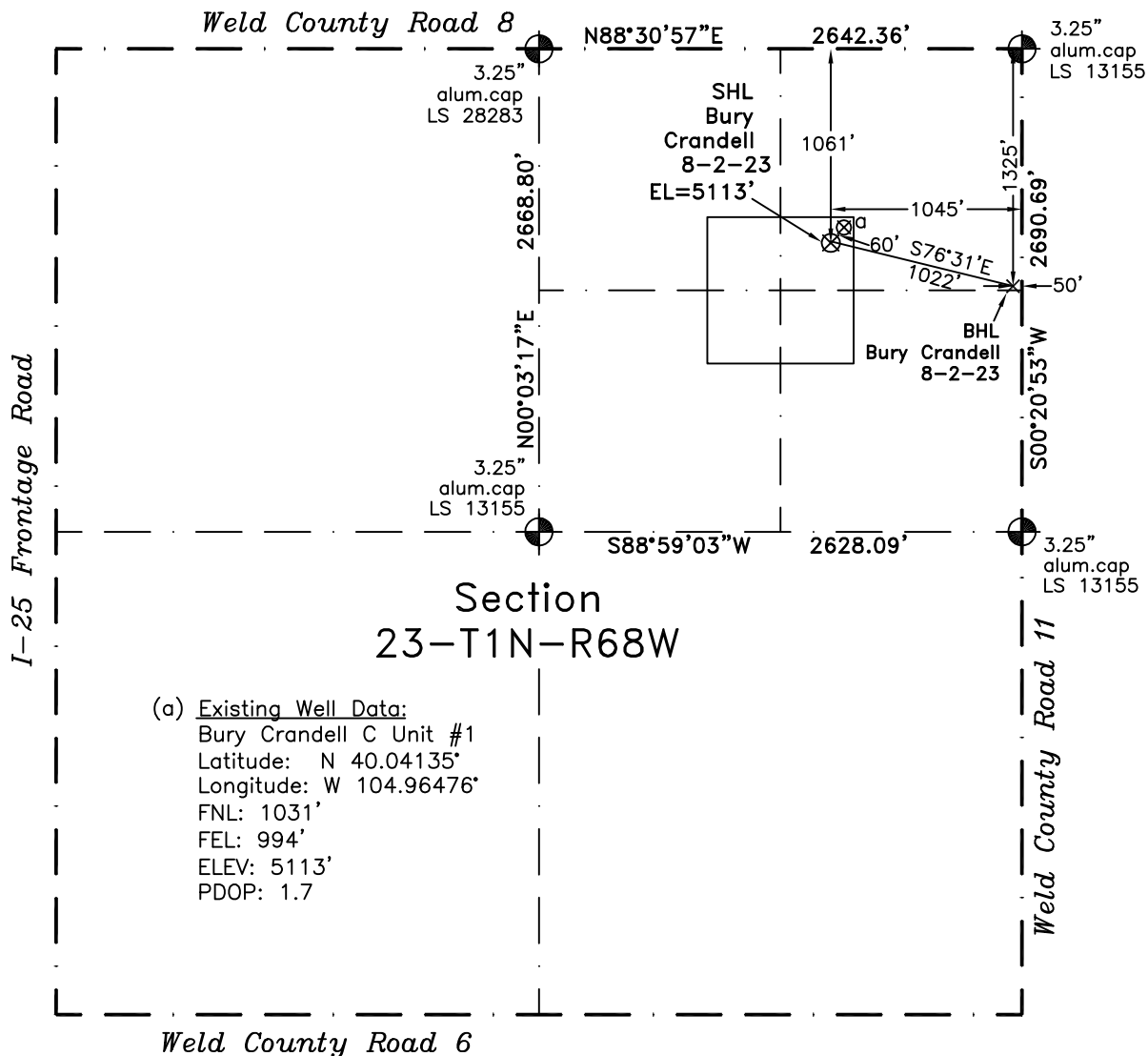
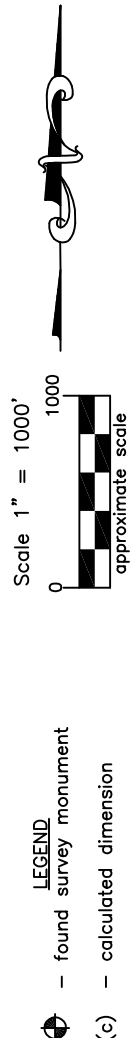


# WELL LOCATION CERTIFICATE

THIS MAP DOES NOT  
REPRESENT A BOUNDARY SURVEY



(a) Existing Well Data:  
Bury Crandell C Unit #1  
Latitude: N 40.04135°  
Longitude: W 104.96476°  
FNL: 1031'  
FEL: 994'  
ELEV: 5113'  
PDOP: 1.7



LEGEND  
- - found survey monument  
- - calculated dimension  
(c)

In accordance with a request from Jack Croom of EnCana Oil & Gas (USA) Inc., Frederick Land Surveying, Inc. has determined the location of the **Bury Crandell 8-2-23** well site to be SHL: 1061' FNL and 1045' FEL, (BHL: 1325' FNL and 50' FEL) as measured at ninety (90) degrees from the section lines of Section 23, Township 1 North, Range 68 West, 6th Principal Meridian, City and County of Broomfield, CO.

Proposed Surface Hole Data:

Latitude: N 40.04126° (BHL 40.04059°)  
Longitude: W 104.96495° (BHL 104.96140°)  
PDOP: 1.7

Nearest: Building 1254' northwest      Above Ground Utility 989' east  
Public Road 1036' east      Railroad 454' northeast  
Property Line 1045' east      Well Window: SHL is 115' inside  
Existing Well: Bury Crandell C Unit #1 60' northeast

Notes:

- 1) Bearings and distances based on NAD 83 Colorado North State Plane Coordinates using RTK GPS observations taken 3/31/11 by operator J.R. McGehee.
- 2) Conversion factor to ground (1.000280465).
- 3) Elevations based on NAVD 88 GPS heights and Geoid 2003 corrections.
- 4) See improvement map for visible improvements within 400 feet of pad site.
- 5) The surface use is agricultural field.

I hereby certify that this Well Location Certificate was prepared by me or under my direct supervision on 3/31/11 for and on behalf of EnCana Oil & Gas (USA) Inc. That it is not a Land Survey Plat or an Improvement Survey Plat and that it is not to be relied upon for establishment of fences, buildings, or other future improvement lines.

**NOTICE:** According to Colorado law you must commence any legal action based upon any defect in this W.L.C. within three years after you first discover such defect. In no event may any action based upon any defect in this W.L.C. be commenced more than ten years from this said date of the certification shown hereon.

John Robert McGehee LS#38219  
Well: Bury Crandell 8-2-23 WLC