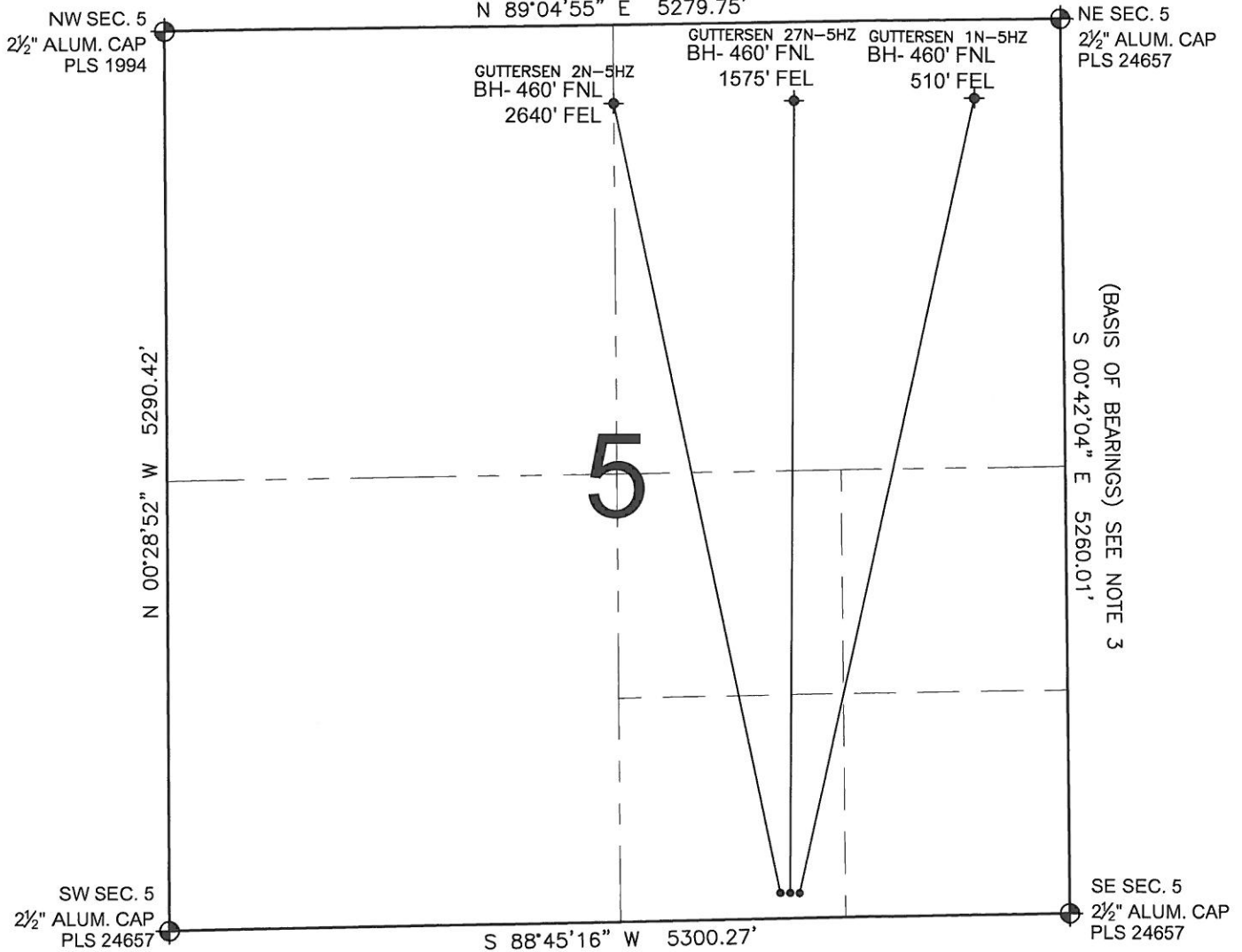


# PAD DRAWING - GUTTERSEN 3 PAD

SECTION 5, TOWNSHIP 3 NORTH, RANGE 63 WEST, 6TH P.M.

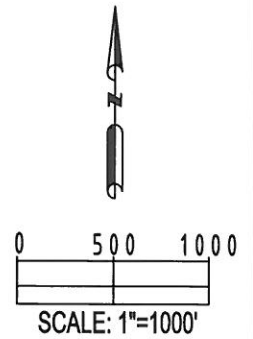


**LEGEND**

- ⊕ = EXISTING MONUMENT    ◆ = BOTTOM HOLE    BH= BOTTOM HOLE
- = PROPOSED WELL        ◆ = EXISTING WELL

- NOTES:**
- THIS SURVEY WAS DONE BY GPS METHODS AND CONFORMS TO THE MINIMUM STANDARDS SET BY THE C.O.G.C.C., RULE NO. 215
  - ELEVATIONS SHOWN AT THE WELL HEAD, AS WELL AS HORIZONTAL CONTROL, ARE BASED ON GPS-RTK VALUES DERIVED FROM DOING 2-HOUR STATIC GPS SESSIONS AND REDUCTIONS USING O.P.U.S. SOLUTIONS.  
VERTICAL = NAVD88;    HORIZONTAL = NAD83/92
  - THE BEARINGS SHOWN HEREON ARE BASED ON GPS OBSERVATIONS BETWEEN THE MONUMENTS SHOWN HEREON AS FOUND ON THE FIELD DATE BELOW.
  - DISTANCES SHOWN ARE AT GROUND LEVEL, AS MEASURED IN THE FIELD, WITH TIES TO WELLS MEASURED AT A PERPENDICULAR TO SECTION LINES.

- NOTES:**
- GUTTERSEN 2N-5HZ TO BE AT 150' FSL, 1680' FEL. BOTTOM HOLE AT 460' FNL & 2640' FEL.
  - GUTTERSEN 27N-5HZ TO BE AT 150' FSL, 1650' FEL. BOTTOM HOLE AT 460' FNL & 1575' FEL.
  - GUTTERSEN 1N-5HZ TO BE AT 150' FSL, 1620' FEL. BOTTOM HOLE AT 460' FNL & 510' FEL.



REVISIONS	
INITIAL	DATE
SMF	01-06-11
SMF	01-13-11
TJN	02-09-11

PREPARED BY:

**PFS**  
Petroleum Field Services, LLC  
1801 W. 13th Ave.  
Denver, CO 80204

KERR-MCGEE OIL & GAS ONSHORE LP

FIELD DATE:  
11-30-10  
DRAWING DATE:  
12-14-10  
BY:  
SMF & TJN

PAD NAME:  
GUTTERSEN 3 PAD  
SURFACE LOCATION:  
WELD COUNTY, COLORADO  
SW 1/4 SE 1/4, SEC. 5, T3N, R63W