

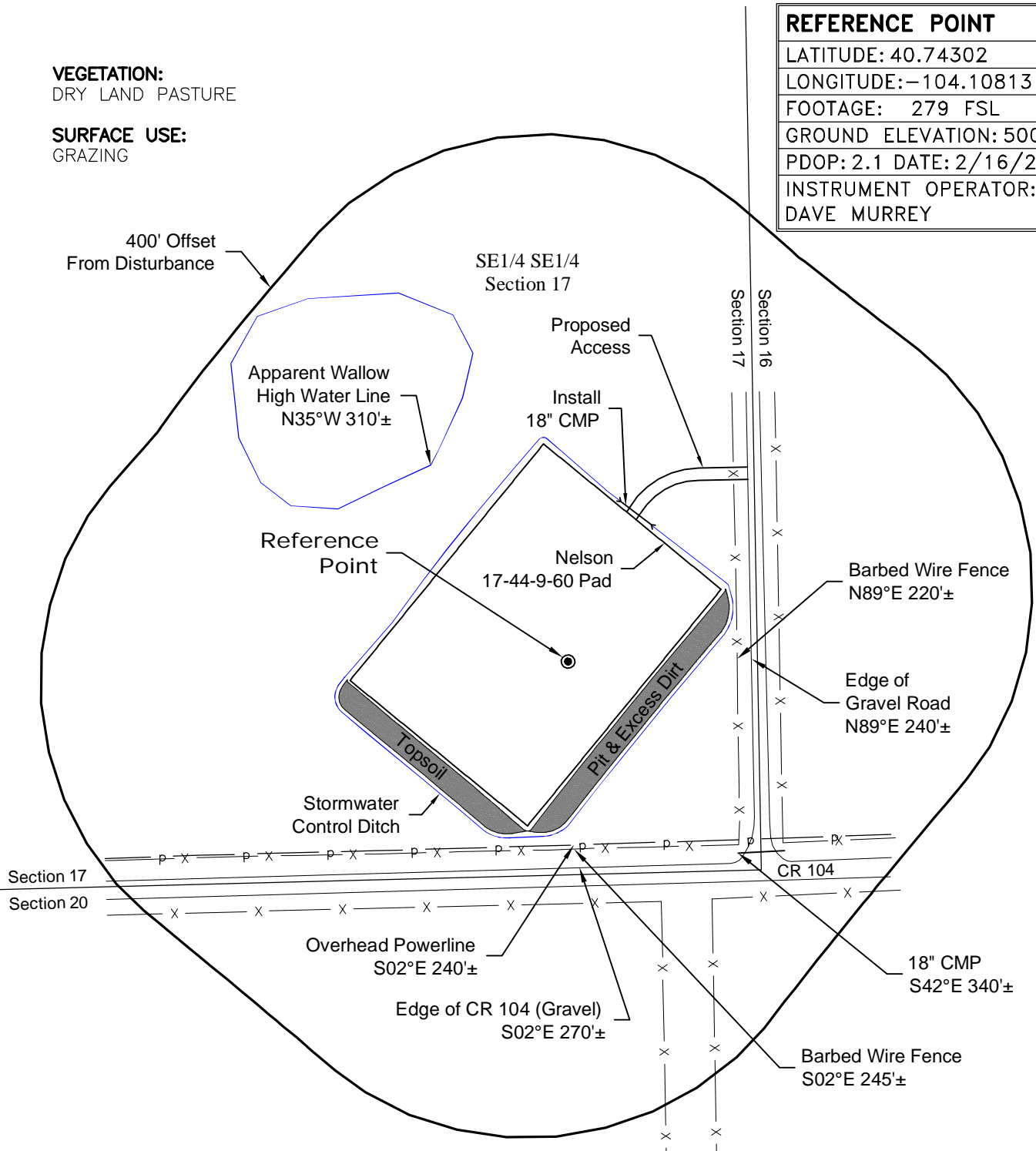
LOCATION DRAWING

VEGETATION:
DRY LAND PASTURE

SURFACE USE:
GRAZING

REFERENCE POINT

LATITUDE: 40.74302
LONGITUDE: -104.10813
FOOTAGE: 279 FSL 248 FEL
GROUND ELEVATION: 5008.2
PDOP: 2.1 DATE: 2/16/2011
INSTRUMENT OPERATOR: DAVE MURREY



NOTE:
ALL PRODUCTION FACILITIES WILL BE ON PAD.

DISTURBANCE ACREAGE:
3.7± DRILLING OPERATIONS
2.0± FRAC PIT
1.0± INTERIM RECLAIM

4/19/11



0 200 400
Graphic Scale in Feet
1 inch = 200 feet

GEO SURV
LAND SURVEYING AND MAPPING
LAFAYETTE - WINTER PARK
Ph 303 666 0379 Fx 303 665 6320

CARRIZO OIL & GAS, INC
NELSON 17-44-9-60 PAD

SE1/4 SE1/4 SEC. 17 T9N R60W
6th PM WELD COUNTY COLORADO