



Jenni Sudduth
Field & Permit Analyst

Date

VIA CERTIFIED MAIL # 7006 0100 0005 2218 6994

Sidwell Herefords RLLP
54286 CR 27
Carr, CO 80612

Re: Sidwell 32-10-66 1H
Section 32 – Township 10N – Range 66W
Weld County, CO

Dear Gentlemen:

Pursuant to the Colorado Oil & Gas Commission ("COGCC") Rule 305(e)(1)(B), Chesapeake Operating, Inc. ("Chesapeake") intends to commence oil and gas operations in the above Section, Township and Range within the next 180 days, but no sooner than 30 days.

Such operations will include, but are not limited to, the construction and operation of certain road(s) and well site location as detailed on the enclosed plat. Please be aware that such well site location will be used for the drilling of multiple horizontal wells. Should circumstances arise that warrant changes to this well site location or road(s), contact will be made for discussion of said changes.

A representative from Chesapeake will attempt to make contact with you within 24 hours prior to entry onto the property. Should you have any questions, please contact:

Chesapeake Operating Inc.
Attention: Andrew Kopec
3001 E. Pershing, Suite 120
Cheyenne, WY 82001
(307) 333-3378

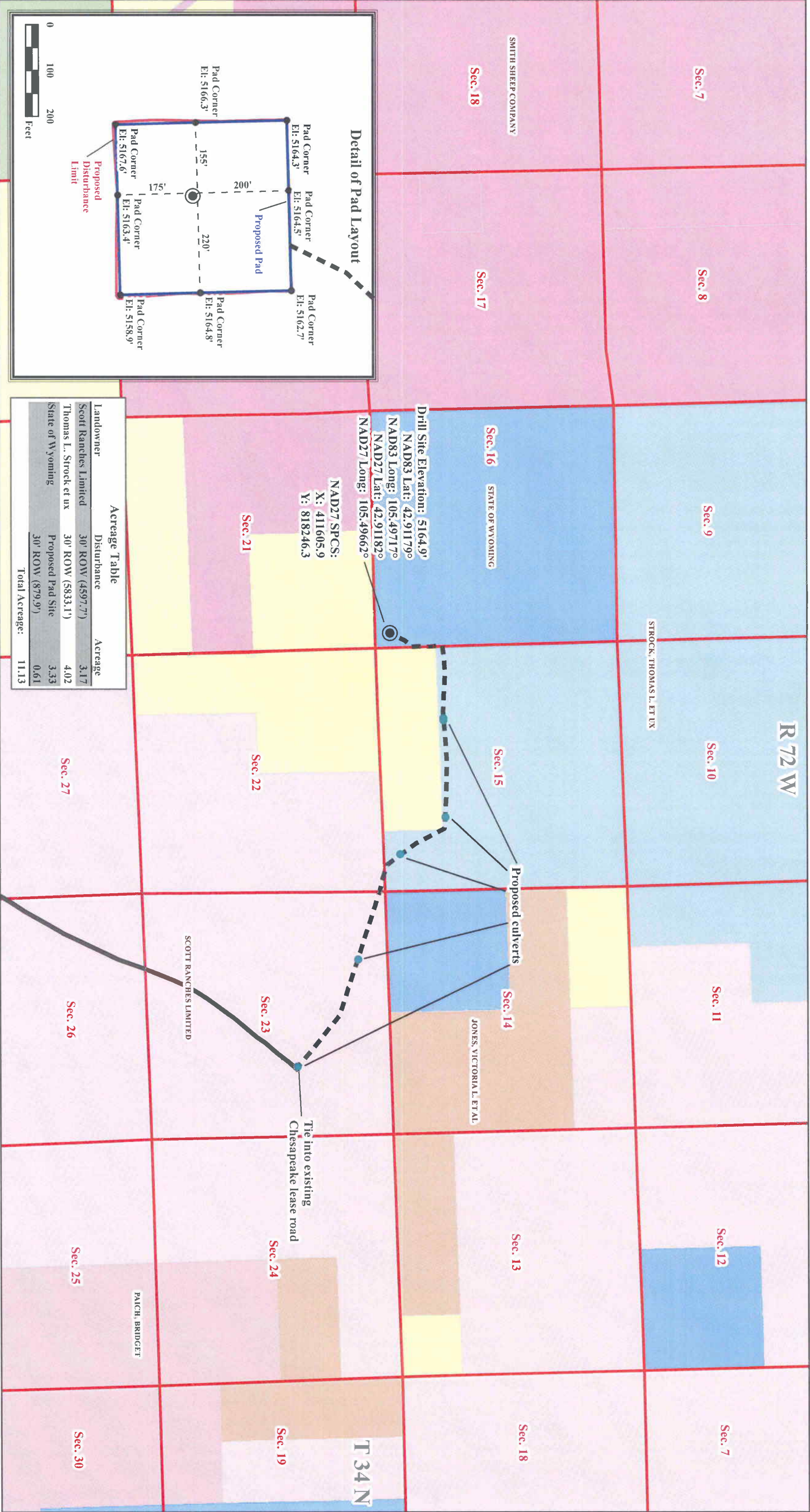
Sincerely yours,

A handwritten signature in blue ink that reads "Jenni Sudduth".

Jenni Sudduth

Enclosures

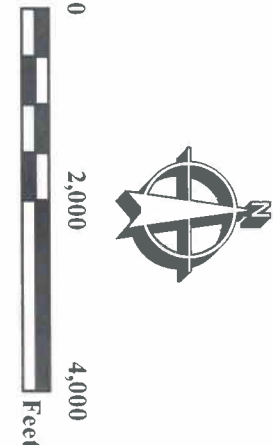
Chesapeake Energy Corporation
6100 N Western Ave. Oklahoma City, OK 73118
405.935.2165 • fax 405.849.2165 • Jenni.Sudduth@chk.com



LOCATION:
SUNDQUIST FLATS UNIT 34-72 16-1H
330' FSL & 330' FEL
333' SOUTH & 322' EAST OF CENTER
SE 1/4 SE 1/4 OF SECTION 16,
T 34 N - R 72 W, 6TH P.M.,
CONVERSE COUNTY, WYOMING

Proposed Well Location
Existing Roads
Proposed Access

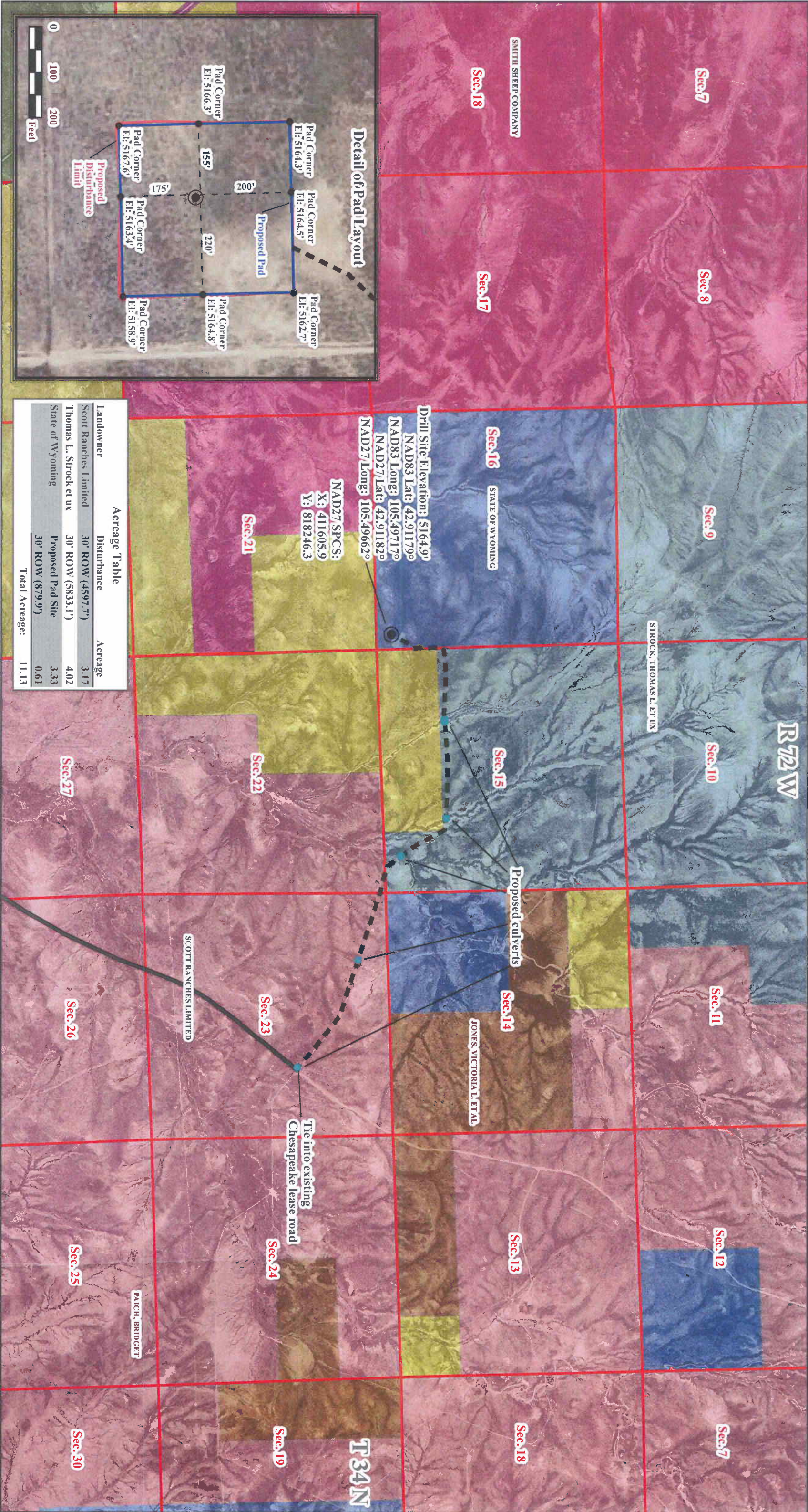
*Note: Section lines derived from GCDB coordinates.



CHESAPEAKE OPERATING, INC.
SUNDQUIST FLATS
UNIT 34-72 16-1H
SURFACE USE PLAT

Scale: 1:24,000
Date: 1/28/2011

Projection: Wyoming
Land Surveying Incorporated
209 North Works Ave
Gillette, WY 82716
LSI



LOCATION:
SUNDQUIST FLATS UNIT 34-72 16-1H
330' FSL & 330' FEL
333' SOUTH & 322' EAST OF CENTER
SE 1/4 SE 1/4 OF SECTION 16,
T 34 N - R 72 W, 6TH P.M.,
CONVERSE COUNTY, WYOMING

*Note: Section lines derived from G:CDB coordinates.