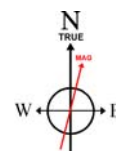
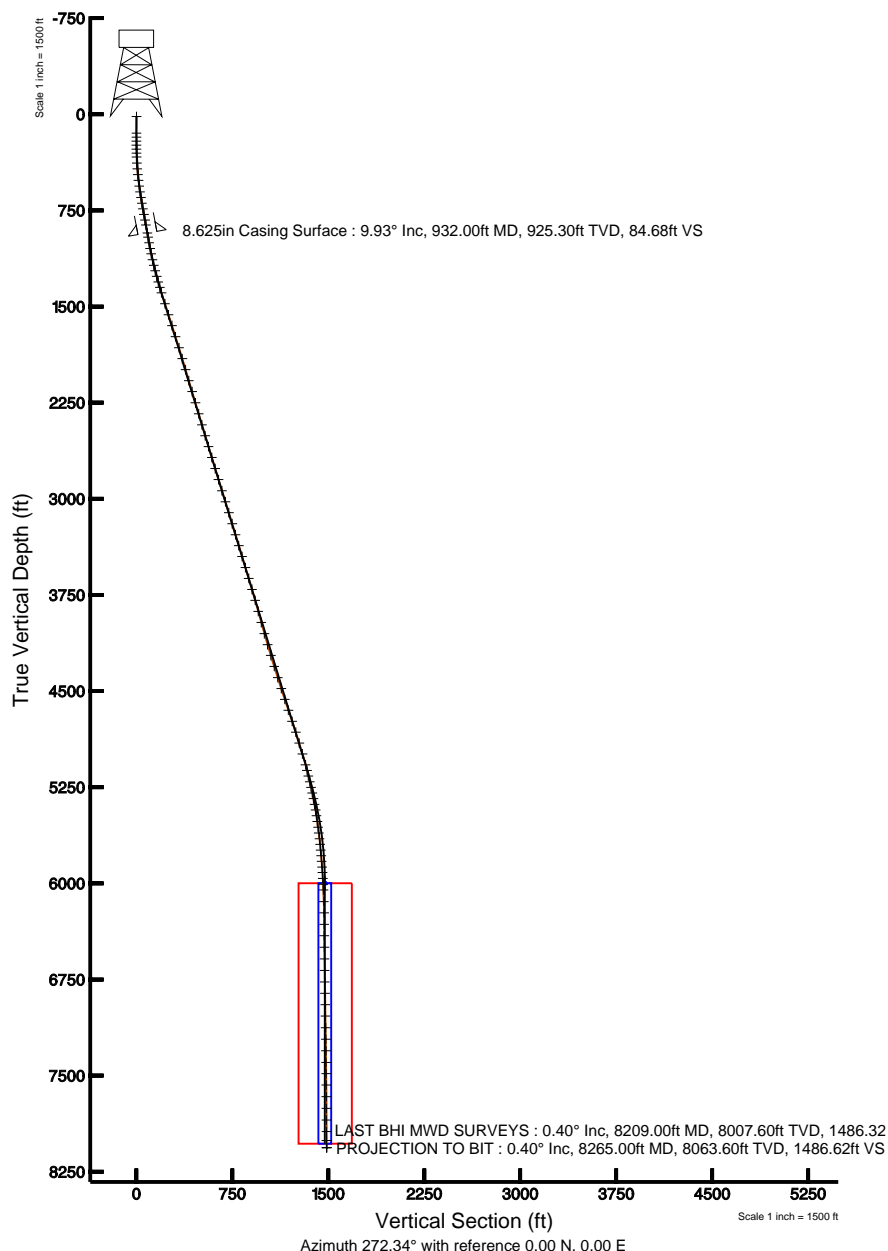
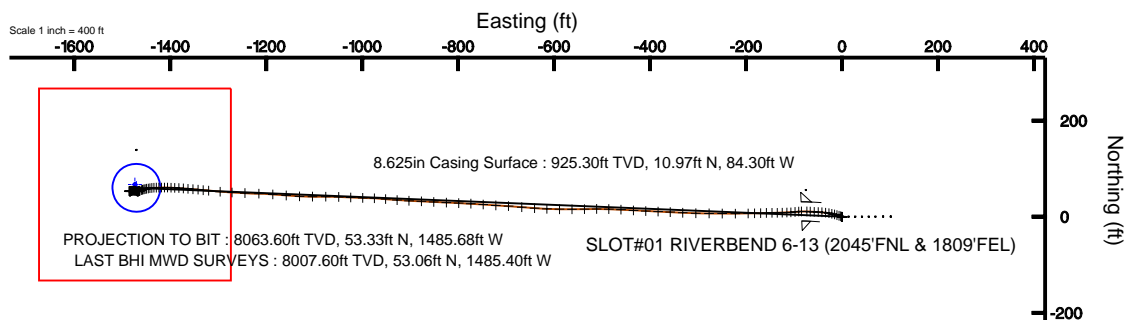


KERR MCGEE OIL & GAS ONSHORE LP

Location: COLORADO Slot: SLOT#01 RIVERBEND 6-13 (2045'FNL & 1809'FEL)
 Field: WELD COUNTY (KERR MCGEE) Well: RIVERBEND 6-13
 Facility: SEC.13-T1N-R67W Wellbore: RIVERBEND 6-13 PWB



Plot reference wellpath is RIVERBEND 6-13 (REV-8.0) PWB	
True vertical depths are referenced to XTREME 7 (RXB)	Grid System: NAD83 / Lambert Colorado State Planes, Northern Zone (501), US feet
Measured depths are referenced to XTREME 7 (RXB)	North Reference: True north
XTREME 7 (RXB) to Mean Sea Level: 4934 feet	Scale: True distance
Mean Sea Level to Mud line (Facility SEC.13-T1N-R67W): 0 feet	Depths are in feet
Coordinates are in feet referenced to Slot	Created by: cookdam on 1/25/2011



BGGM (1945.0 to 2012.0) Dip: 66.79° Field: 53021.7 nT
 Magnetic North is 8.92 degrees East of True North (at 11/16/2010)

To correct azimuth from Magnetic to True add 8.92 degrees
 For example: if the Magnetic North Azimuth = 90 degs, then the Grid North Azimuth = 90 + 8.92 = 98.92



Actual Wellpath Report

RIVERBEND 6-13 AWP

Page 1 of 6



INTEQ

REFERENCE WELLPATH IDENTIFICATION

Operator	KERR MCGEE OIL & GAS ONSHORE LP	Slot	SLOT#01 RIVERBEND 6-13 (2045'FNL & 1809'FEL)
Area	COLORADO	Well	RIVERBEND 6-13
Field	WELD COUNTY (KERR MCGEE)	Wellbore	RIVERBEND 6-13 AWP
Facility	SEC.13-T1N-R67W		

REPORT SETUP INFORMATION

Projection System	NAD83 / Lambert Colorado State Planes, Northern Zone (501), US feet	Software System	WellArchitect® 2.0
North Reference	True	User	Cookdanm
Scale	0.999963	Report Generated	1/25/2011 at 3:28:05 PM
Convergence at slot	0.43° East	Database/Source file	Denver Server/RIVERBEND_6-13_AWP.xml

WELLPATH LOCATION

	Local coordinates		Grid coordinates		Geographic coordinates	
	North[ft]	East[ft]	Easting[USft]	Northing[USft]	Latitude	Longitude
Slot Location	0.36	-5.89	3185824.38	1262745.11	40°03'09.774"N	104°50'10.270"W
Facility Reference Pt			3185830.27	1262744.80	40°03'09.770"N	104°50'10.194"W
Field Reference Pt			3197771.84	1268891.29	40°04'09.600"N	104°47'36.000"W

WELLPATH DATUM

Calculation method	Minimum curvature	XTREME 7 (RKB) to Facility Vertical Datum	4934.00ft
Horizontal Reference Pt	Slot	XTREME 7 (RKB) to Mean Sea Level	4934.00ft
Vertical Reference Pt	XTREME 7 (RKB)	Facility Vertical Datum to Mud Line (Facility)	0.00ft
MD Reference Pt	XTREME 7 (RKB)	Section Origin	N 0.00, E 0.00 ft
Field Vertical Reference	Mean Sea Level	Section Azimuth	272.34°



Actual Wellpath Report

RIVERBEND 6-13 AWP

Page 2 of 6



INTEQ

REFERENCE WELLPATH IDENTIFICATION

Operator	KERR MCGEE OIL & GAS ONSHORE LP	Slot	SLOT#01 RIVERBEND 6-13 (2045'FNL & 1809'FEL)
Area	COLORADO	Well	RIVERBEND 6-13
Field	WELD COUNTY (KERR MCGEE)	Wellbore	RIVERBEND 6-13 AWP
Facility	SEC.13-T1N-R67W		

WELLPATH DATA (120 stations) † = interpolated/extrapolated station

MD [ft]	Inclination [°]	Azimuth [°]	TVD [ft]	Vert Sect [ft]	North [ft]	East [ft]	DLS [°/100ft]	Comments
0.00†	0.000	128.100	0.00	0.00	0.00	0.00	0.00	
17.00	0.000	128.100	17.00	0.00	0.00	0.00	0.00	
146.00	0.600	128.100	146.00	-0.55	-0.42	0.53	0.47	
178.00	0.500	73.600	178.00	-0.82	-0.48	0.80	1.60	
209.00	0.400	128.100	209.00	-1.03	-0.51	1.01	1.36	
240.00	0.400	41.600	240.00	-1.19	-0.50	1.17	1.77	
271.00	0.400	261.700	270.99	-1.15	-0.43	1.13	2.42	
302.00	1.300	297.900	301.99	-0.73	-0.28	0.72	3.24	
333.00	2.200	291.700	332.98	0.15	0.10	-0.15	2.96	
380.00	3.700	286.700	379.91	2.47	0.87	-2.44	3.24	
425.00	5.300	287.000	424.77	5.89	1.90	-5.82	3.56	
470.00	6.300	287.000	469.54	10.29	3.23	-10.17	2.22	
516.00	6.900	285.300	515.24	15.42	4.69	-15.24	1.37	
561.00	7.700	283.100	559.87	21.02	6.09	-20.79	1.88	
606.00	8.600	279.600	604.42	27.32	7.34	-27.04	2.28	
651.00	9.400	277.500	648.86	34.32	8.38	-34.00	1.92	
696.00	10.000	275.100	693.22	41.88	9.20	-41.54	1.61	
740.00	10.400	273.300	736.52	49.67	9.77	-49.31	1.16	
785.00	10.700	272.200	780.76	57.90	10.17	-57.54	0.80	
830.00	10.700	272.900	824.98	66.26	10.54	-65.88	0.29	
869.00	10.600	272.600	863.31	73.47	10.88	-73.08	0.29	
965.00	9.600	265.600	957.82	90.25	10.67	-89.89	1.65	
1010.00	10.600	263.900	1002.13	98.07	9.94	-97.74	2.32	
1055.00	11.200	265.600	1046.31	106.50	9.17	-106.22	1.51	
1098.00	11.500	268.000	1088.47	114.92	8.70	-114.66	1.30	
1144.00	12.500	268.000	1133.47	124.46	8.36	-124.22	2.17	
1189.00	14.100	269.400	1177.26	134.79	8.14	-134.57	3.63	
1234.00	14.700	270.100	1220.85	145.97	8.09	-145.76	1.39	
1279.00	15.200	268.400	1264.32	157.56	7.93	-157.37	1.48	
1324.00	16.000	267.300	1307.66	169.62	7.48	-169.46	1.90	
1368.00	17.000	268.700	1349.85	182.08	7.05	-181.95	2.45	
1413.00	17.300	268.000	1392.85	195.32	6.66	-195.21	0.81	
1502.00	17.700	270.500	1477.73	222.04	6.32	-221.97	0.96	
1592.00	18.000	270.800	1563.40	249.61	6.63	-249.55	0.35	
1681.00	17.800	270.100	1648.09	276.95	6.85	-276.90	0.33	
1772.00	17.600	271.500	1734.78	304.61	7.23	-304.57	0.52	
1862.00	17.600	272.900	1820.57	331.82	8.28	-331.76	0.47	
1951.00	16.400	272.900	1905.68	357.84	9.59	-357.75	1.35	
2041.00	16.400	272.600	1992.02	383.25	10.81	-383.13	0.09	
2131.00	16.700	271.500	2078.29	408.88	11.73	-408.75	0.48	
2220.00	16.900	274.700	2163.50	434.60	13.12	-434.42	1.06	
2311.00	16.400	272.600	2250.68	460.66	14.79	-460.44	0.86	
2400.00	16.700	272.200	2335.99	486.01	15.85	-485.77	0.36	
2490.00	16.100	269.400	2422.33	511.41	16.22	-511.17	1.10	
2579.00	17.000	268.700	2507.64	536.71	15.79	-536.52	1.04	



Actual Wellpath Report

RIVERBEND 6-13 AWP

Page 3 of 6



INTEQ

REFERENCE WELLPATH IDENTIFICATION

Operator	KERR MCGEE OIL & GAS ONSHORE LP	Slot	SLOT#01 RIVERBEND 6-13 (2045'FNL & 1809'FEL)
Area	COLORADO	Well	RIVERBEND 6-13
Field	WELD COUNTY (KERR MCGEE)	Wellbore	RIVERBEND 6-13 AWP
Facility	SEC.13-T1N-R67W		

WELLPATH DATA (120 stations)

MD [ft]	Inclination [°]	Azimuth [°]	TVD [ft]	Vert Sect [ft]	North [ft]	East [ft]	DLS [°/100ft]	Comments
2668.00	17.100	269.800	2592.73	562.77	15.45	-562.61	0.38	
2757.00	17.100	270.800	2677.80	588.92	15.59	-588.78	0.33	
2847.00	16.600	272.900	2763.94	615.01	16.42	-614.85	0.88	
2937.00	16.600	273.300	2850.18	640.71	17.81	-640.52	0.13	
3028.00	17.900	275.400	2937.09	667.68	19.88	-667.42	1.58	
3118.00	17.800	273.700	3022.76	695.24	22.07	-694.92	0.59	
3207.00	17.000	272.600	3107.69	721.85	23.53	-721.49	0.97	
3297.00	17.000	275.400	3193.75	748.15	25.37	-747.74	0.91	
3387.00	16.500	272.600	3279.94	774.07	27.19	-773.60	1.05	
3476.00	16.600	272.200	3365.25	799.42	28.25	-798.93	0.17	
3565.00	17.000	272.900	3450.45	825.14	29.40	-824.63	0.50	
3655.00	17.100	272.900	3536.50	851.53	30.73	-850.98	0.11	
3743.00	16.900	273.300	3620.65	877.26	32.12	-876.67	0.26	
3833.00	16.400	271.500	3706.88	903.04	33.21	-902.44	0.80	
3922.00	16.200	275.100	3792.30	928.00	34.64	-927.36	1.16	
4011.00	14.900	274.700	3878.04	951.84	36.68	-951.13	1.47	
4101.00	15.200	273.300	3964.96	975.20	38.31	-974.44	0.52	
4192.00	16.100	270.800	4052.58	999.74	39.17	-998.97	1.24	
4281.00	16.400	273.300	4138.03	1024.64	40.07	-1023.85	0.86	
4369.00	17.000	271.900	4222.32	1049.92	41.21	-1049.11	0.82	
4459.00	17.800	270.500	4308.20	1076.83	41.76	-1076.02	1.00	
4550.00	17.600	269.800	4394.89	1104.47	41.84	-1103.69	0.32	
4639.00	17.800	272.900	4479.68	1131.52	42.48	-1130.73	1.08	
4729.00	18.300	274.400	4565.25	1159.40	44.26	-1158.56	0.76	
4818.00	18.200	274.700	4649.77	1187.25	46.47	-1186.34	0.15	
4909.00	19.200	271.900	4735.97	1216.41	48.13	-1215.46	1.48	
4999.00	18.600	272.200	4821.12	1245.56	49.17	-1244.59	0.68	
5088.00	16.600	272.900	4905.95	1272.47	50.36	-1271.48	2.26	
5176.00	16.200	274.700	4990.37	1297.31	52.00	-1296.27	0.73	
5265.00	15.100	275.800	5076.07	1321.28	54.19	-1320.17	1.28	
5310.00	14.200	275.100	5119.60	1332.65	55.27	-1331.50	2.04	
5355.00	13.800	275.800	5163.27	1343.52	56.31	-1342.34	0.97	
5401.00	13.200	274.400	5207.99	1354.24	57.26	-1353.03	1.49	
5446.00	12.700	275.100	5251.85	1364.32	58.10	-1363.08	1.16	
5491.00	12.300	275.100	5295.78	1374.05	58.96	-1372.78	0.89	
5536.00	11.600	273.300	5339.81	1383.36	59.65	-1382.08	1.76	
5581.00	10.700	272.900	5383.96	1392.06	60.12	-1390.76	2.01	
5626.00	9.500	272.200	5428.26	1399.95	60.48	-1398.65	2.68	
5671.00	8.700	271.200	5472.69	1407.07	60.69	-1405.76	1.81	
5716.00	8.200	270.500	5517.20	1413.68	60.79	-1412.37	1.13	
5762.00	7.200	268.400	5562.79	1419.83	60.74	-1418.54	2.26	
5807.00	6.900	269.100	5607.45	1425.34	60.62	-1424.06	0.69	
5852.00	6.700	268.400	5652.13	1430.66	60.50	-1429.38	0.48	
5897.00	5.900	267.000	5696.86	1435.58	60.31	-1434.32	1.81	
5942.00	5.300	261.700	5741.65	1439.93	59.89	-1438.68	1.76	



Actual Wellpath Report

RIVERBEND 6-13 AWP

Page 4 of 6



INTEQ

REFERENCE WELLPATH IDENTIFICATION

Operator	KERR MCGEE OIL & GAS ONSHORE LP	Slot	SLOT#01 RIVERBEND 6-13 (2045'FNL & 1809'FEL)
Area	COLORADO	Well	RIVERBEND 6-13
Field	WELD COUNTY (KERR MCGEE)	Wellbore	RIVERBEND 6-13 AWP
Facility	SEC.13-T1N-R67W		

WELLPATH DATA (120 stations)

MD [ft]	Inclination [°]	Azimuth [°]	TVD [ft]	Vert Sect [ft]	North [ft]	East [ft]	DLS [°/100ft]	Comments
5985.00	4.900	261.000	5784.48	1443.68	59.31	-1442.46	0.94	
6029.00	4.700	262.100	5828.32	1447.30	58.77	-1446.10	0.50	
6074.00	4.200	258.500	5873.19	1450.71	58.19	-1449.55	1.27	
6117.00	3.800	258.900	5916.08	1453.63	57.60	-1452.49	0.93	
6163.00	3.600	256.100	5961.98	1456.50	56.96	-1455.38	0.59	
6208.00	3.100	251.900	6006.91	1458.99	56.24	-1457.91	1.24	
6253.00	2.700	253.600	6051.85	1461.14	55.56	-1460.09	0.91	
6344.00	1.900	239.900	6142.78	1464.44	54.20	-1463.45	1.06	
6432.00	0.600	263.800	6230.75	1466.13	53.42	-1465.17	1.56	
6522.00	0.500	218.100	6320.75	1466.82	53.06	-1465.88	0.49	
6611.00	0.800	239.900	6409.74	1467.57	52.44	-1466.66	0.43	
6701.00	0.700	281.000	6499.74	1468.65	52.23	-1467.74	0.59	
6791.00	0.600	276.800	6589.73	1469.66	52.39	-1468.75	0.12	
6881.00	0.800	299.000	6679.73	1470.69	52.75	-1469.76	0.37	
6971.00	1.200	291.200	6769.71	1472.15	53.40	-1471.19	0.47	
7060.00	1.100	287.700	6858.69	1473.85	54.00	-1472.87	0.14	
7149.00	1.200	264.200	6947.68	1475.60	54.16	-1474.62	0.54	
7237.00	1.000	273.300	7035.66	1477.28	54.11	-1476.30	0.30	
7328.00	1.100	265.600	7126.64	1478.94	54.09	-1477.96	0.19	
7418.00	0.900	278.600	7216.63	1480.50	54.13	-1479.52	0.33	
7508.00	0.600	253.600	7306.62	1481.65	54.10	-1480.67	0.49	
7599.00	0.500	257.500	7397.62	1482.48	53.88	-1481.52	0.12	
7687.00	0.600	238.800	7485.62	1483.24	53.56	-1482.29	0.23	
7776.00	0.400	215.300	7574.61	1483.80	53.07	-1482.87	0.32	
7867.00	0.300	232.200	7665.61	1484.15	52.66	-1483.24	0.16	
7958.00	0.400	237.100	7756.61	1484.59	52.34	-1483.69	0.11	
8049.00	0.400	289.500	7847.61	1485.15	52.28	-1484.26	0.39	
8139.00	0.600	307.100	7937.60	1485.84	52.67	-1484.93	0.28	
8209.00	0.400	314.400	8007.60	1486.32	53.06	-1485.40	0.30	LAST BHI MWD SURVEYS
8265.00	0.400	314.400	8063.60	1486.62	53.33	-1485.68	0.00	PROJECTION TO BIT

HOLE & CASING SECTIONS Ref Wellbore: RIVERBEND 6-13 AWP Ref Wellpath: RIVERBEND 6-13 AWP

String/Diameter	Start MD [ft]	End MD [ft]	Interval [ft]	Start TVD [ft]	End TVD [ft]	Start N/S [ft]	Start E/W [ft]	End N/S [ft]	End E/W [ft]
12.25in Open Hole	17.00	932.00	915.00	17.00	925.30	0.00	0.00	10.97	-84.30
8.625in Casing Surface	17.00	932.00	915.00	17.00	925.30	0.00	0.00	10.97	-84.30
7.875in Open Hole	932.00	8265.00	7333.00	925.30	8063.60	10.97	-84.30	53.33	-1485.68



Actual Wellpath Report

RIVERBEND 6-13 AWP

Page 5 of 6



INTEQ

REFERENCE WELLPATH IDENTIFICATION

Operator	KERR MCGEE OIL & GAS ONSHORE LP	Slot	SLOT#01 RIVERBEND 6-13 (2045'FNL & 1809'FEL)
Area	COLORADO	Well	RIVERBEND 6-13
Field	WELD COUNTY (KERR MCGEE)	Wellbore	RIVERBEND 6-13 AWP
Facility	SEC.13-T1N-R67W		

TARGETS

Name	MD [ft]	TVD [ft]	North [ft]	East [ft]	Grid East [srv ft]	Grid North [srv ft]	Latitude	Longitude	Shape
RIVERBEND 6-13 GEO TARGET 50' RADIUS (1980'FNL & 1980'FWL, REV- 1)		6000.00	60.16	-1470.83	3184353.20	1262794.25	40°03'10.368"N	104°50'29.184"W	circle
RIVERBEND 6-13 LEGAL BOX (193'S,207'N,197'E,203'W OF THE GEO TARGET)		6000.00	67.16	-1473.83	3184350.15	1262801.23	40°03'10.437"N	104°50'29.223"W	square

WELLPATH COMPOSITION Ref Wellbore: RIVERBEND 6-13 AWP Ref Wellpath: RIVERBEND 6-13 AWP

Start MD [ft]	End MD [ft]	Positional Uncertainty Model	Log Name/Comment	Wellbore
17.00	869.00	NaviTrak (Standard)	BHI MWD SURVEYS 12.25 HOLE <146-869>	RIVERBEND 6-13 AWP
869.00	8209.00	NaviTrak (Standard)	BHI MWD SURVEYS 7.875 HOLE <965-8209>	RIVERBEND 6-13 AWP
8209.00	8265.00	Blind Drilling (std)	Projection to bit	RIVERBEND 6-13 AWP



Actual Wellpath Report

RIVERBEND 6-13 AWP

Page 6 of 6



INTEQ

REFERENCE WELLPATH IDENTIFICATION

Operator	KERR MCGEE OIL & GAS ONSHORE LP	Slot	SLOT#01 RIVERBEND 6-13 (2045'FNL & 1809'FEL)
Area	COLORADO	Well	RIVERBEND 6-13
Field	WELD COUNTY (KERR MCGEE)	Wellbore	RIVERBEND 6-13 AWB
Facility	SEC.13-T1N-R67W		

WELLPATH COMMENTS

MD [ft]	Inclination [°]	Azimuth [°]	TVD [ft]	Comment
8209.00	0.400	314.400	8007.60	LAST BHI MWD SURVEYS
8265.00	0.400	314.400	8063.60	PROJECTION TO BIT