



Weatherford

COMPACT WELL SHUTTLE

HOLE VOLUME

LOG

COMPANY

EXXON MOBIL CORPORATION

WELL

NORTH PICEANCE CREEK 196-19B1

FIELD

PICEANCE CREEK

PROVINCE/COUNTY

RIO BLANCO

COUNTRY/STATE

U.S.A. / COLORADO

LOCATION

SHL: 2493' FNL & 423' FEL



LSD

SEC

19

TWP

1S

RGE

96W

Other Services

DENSITY/NEUTRON

API Number 05-103-1108100

RESISTIVITY

Permit Number 05-103-1108100

SONIC

Permanent Datum G.L., Elevation 6882.5 feet

Log Measured From K.B. @ 30 FEET above Permanent Datum

Drilling Measured From K.B.

Elevations:

KB

DF

GL

feet

6912.50

6911.50

6882.50

BOREHOLE RECORD

Last Edited: 28-OCT-2010 11:59

Bit Size inches	Depth From feet	Depth To feet
6.125	11164.00	14761.00

CASING RECORD

Type	Size inches	Depth From feet	Shoe Depth feet	Weight pounds/ft
INTERM	7.000	0.00	11164.00	26.00

REMARKS

TOOLS: COMPACT DROP OFF, GAMMA RAY, NEUTRON, DENSITY, FOCUSED ELECTRIC, SONIC, AND INDUCTION RAN IN COMBINATION.

HARDWARE: DENSITY: 4 INCH PROFILE PLATE USED.
FOCUSED ELECTRIC: INLINE CENTRALIZERS USED.
SONIC: INLINE CENTRALIZERS USED.
INDUCTION: INLINE CENTRALIZERS USED.
SINGLE BOWSPRINGS USED FOR ECENTRALIZATION OF POROSITY TOOLS.

2.65 G/CC DENSITY MATRIX USED TO CALCULATE POROSITY.

ALL INTERVALS LOGGED AND SCALED PER CUSTOMER'S REQUEST.

DEPTH CONTROL TAKEN FROM PIPE STRAP AND TIED INTO INTERMEDIATE LOGS.

MFE NOT WORKING PROPERLY AND THEREFOR NOT SHOWN.

TWO FOOT RESOLUTION CURVES USE FOR INDUCTION DUE TO MFE NOT WORKING PROPERLY.

EEEC IS SHOWN ONLY AS ALTHOUGH IT IS NOT RELIABLE.

TEPC IS SHOWN ON LAS ALTHOUGH IT IS NOT RELIABLE.
IT IS BLOCKY FROM TD TO 11150 AND FLATLINED FROM 11150 TO CASING.

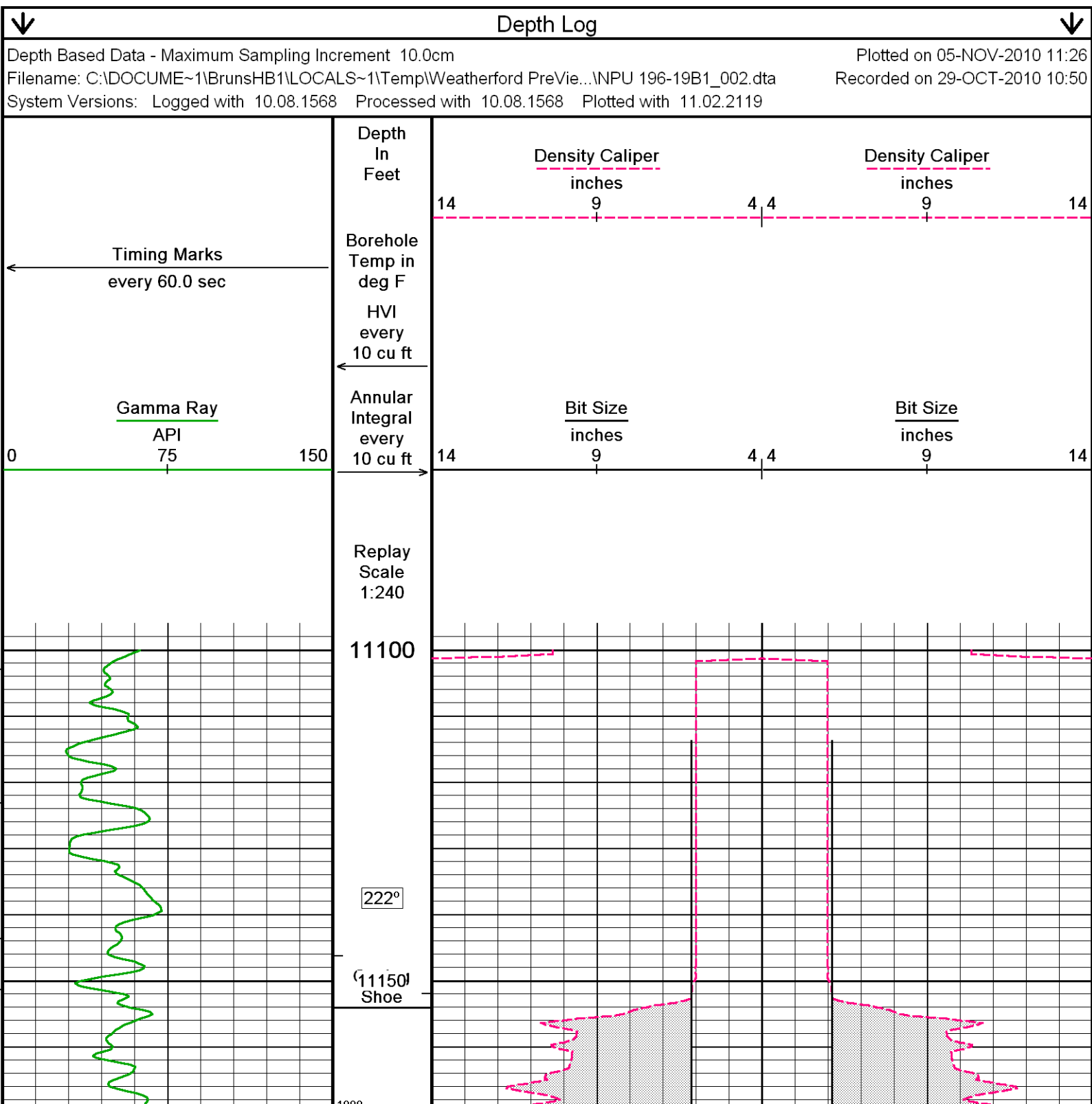
TIGHT PULLS, BOREHOLE SIZE, AND RUGOSITY WILL AFFECT DATA QUALITY.

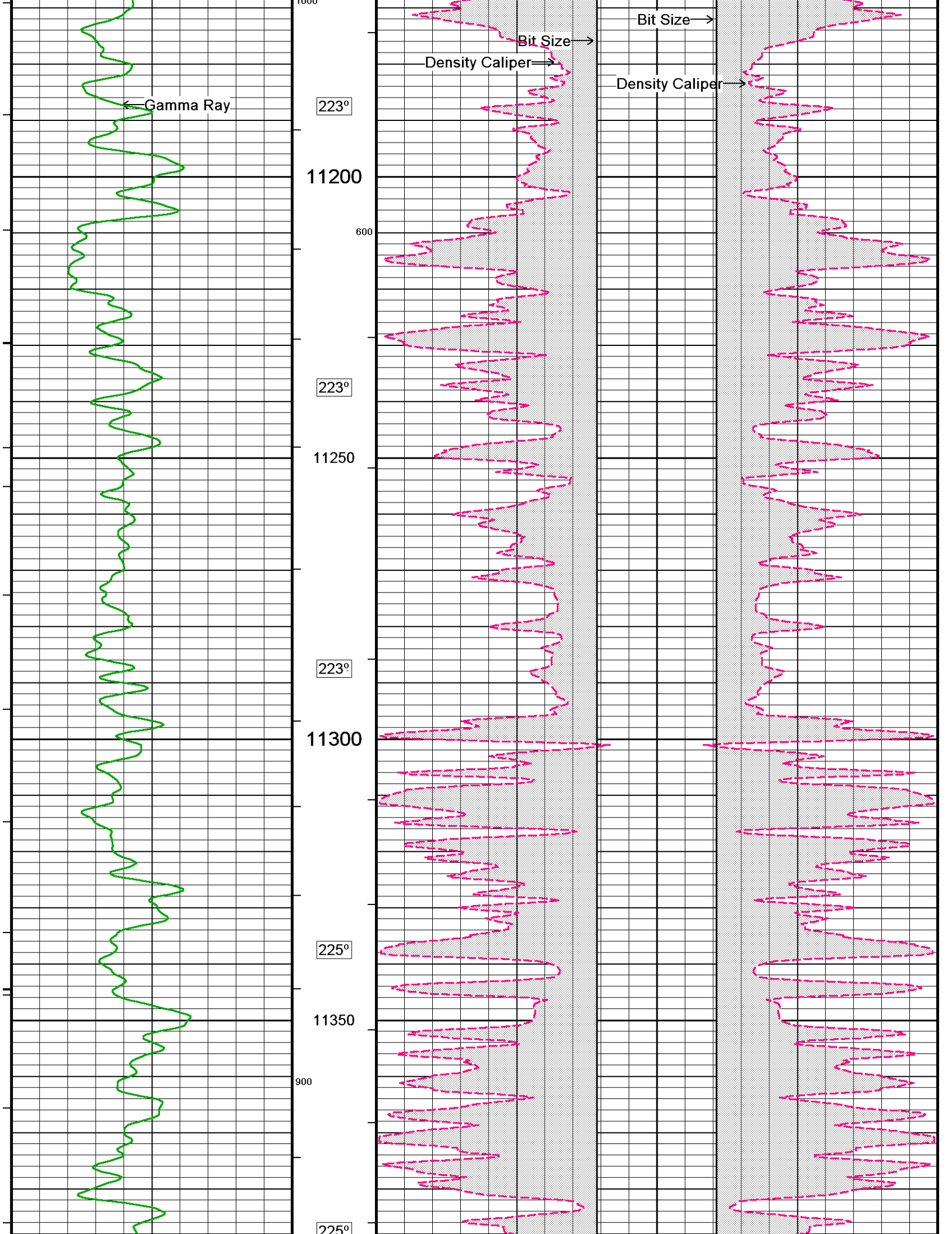
OPERATORS: J. YOAKUM, L. STAAKE

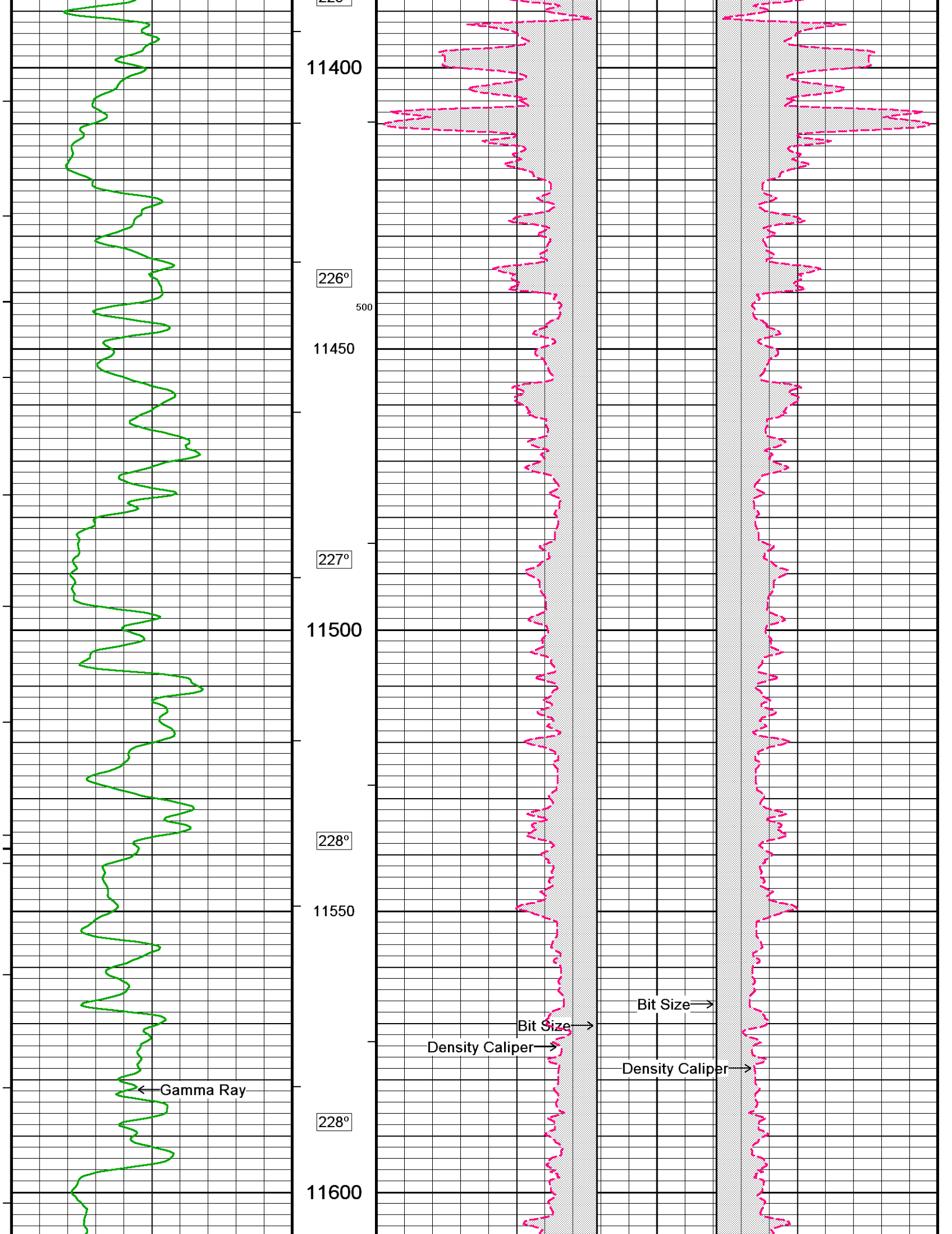
SERVICE ORDER: #3526128

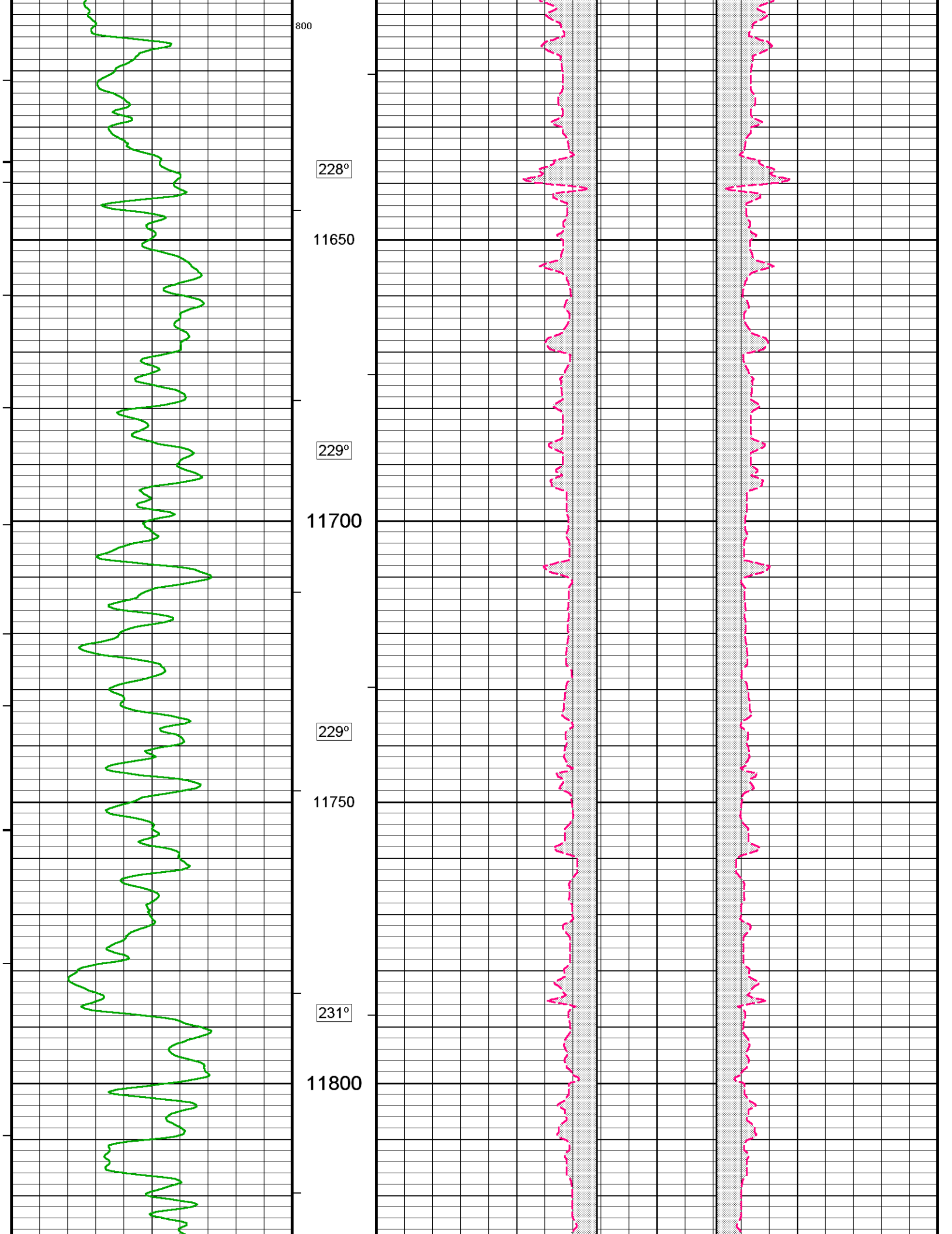
RIG: HP 215

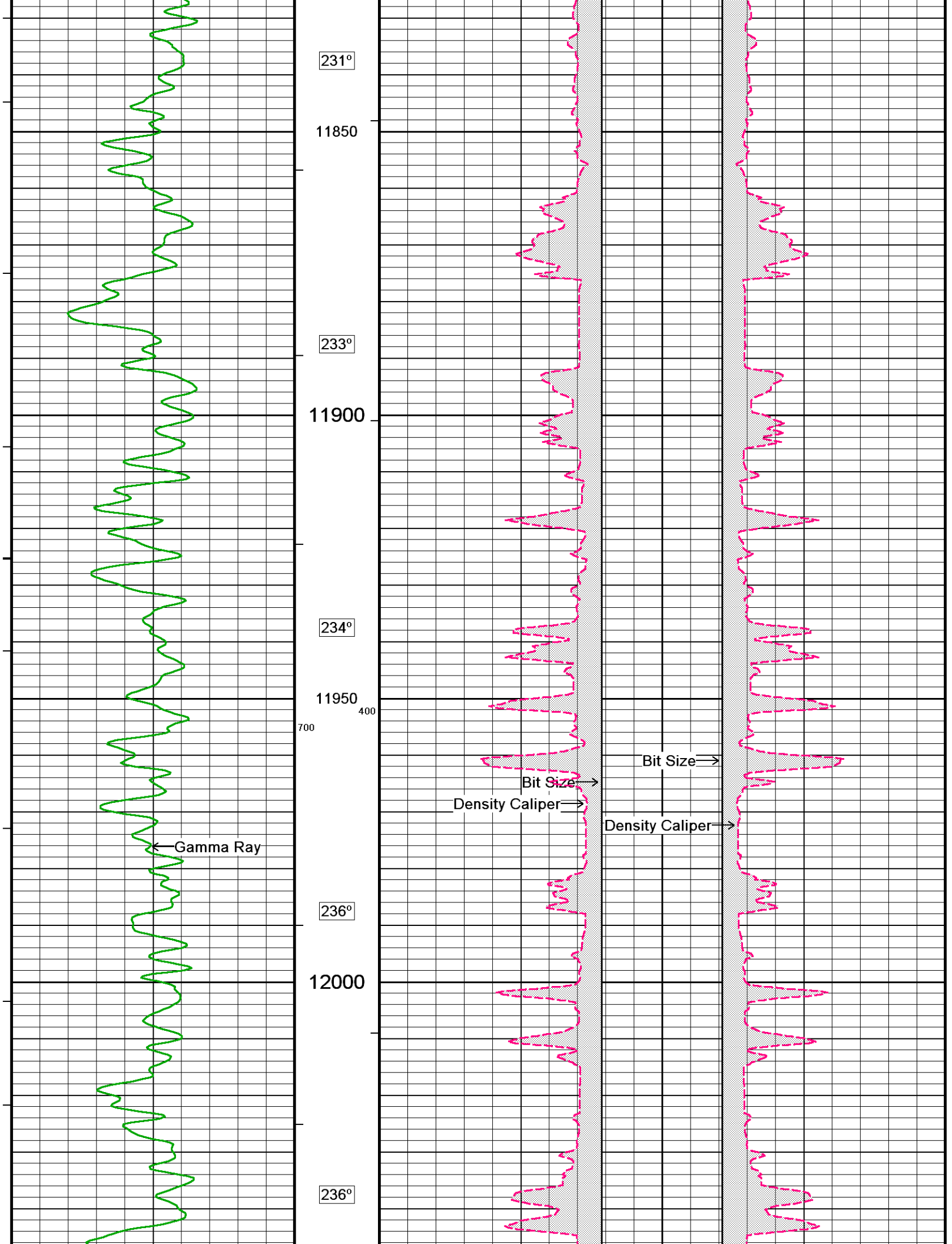
All interpretations are opinions based on inferences from electrical or other measurements and we cannot, and do not, guarantee the accuracy or correctness of any interpretations, and we shall not, except in the case of gross or wilful negligence on our part, be liable or responsible for any loss, costs, damages or expenses incurred or sustained by anyone resulting from any interpretation made by any of our officers, agents or employees. These interpretations are also subject to our general terms and conditions in our price schedule.

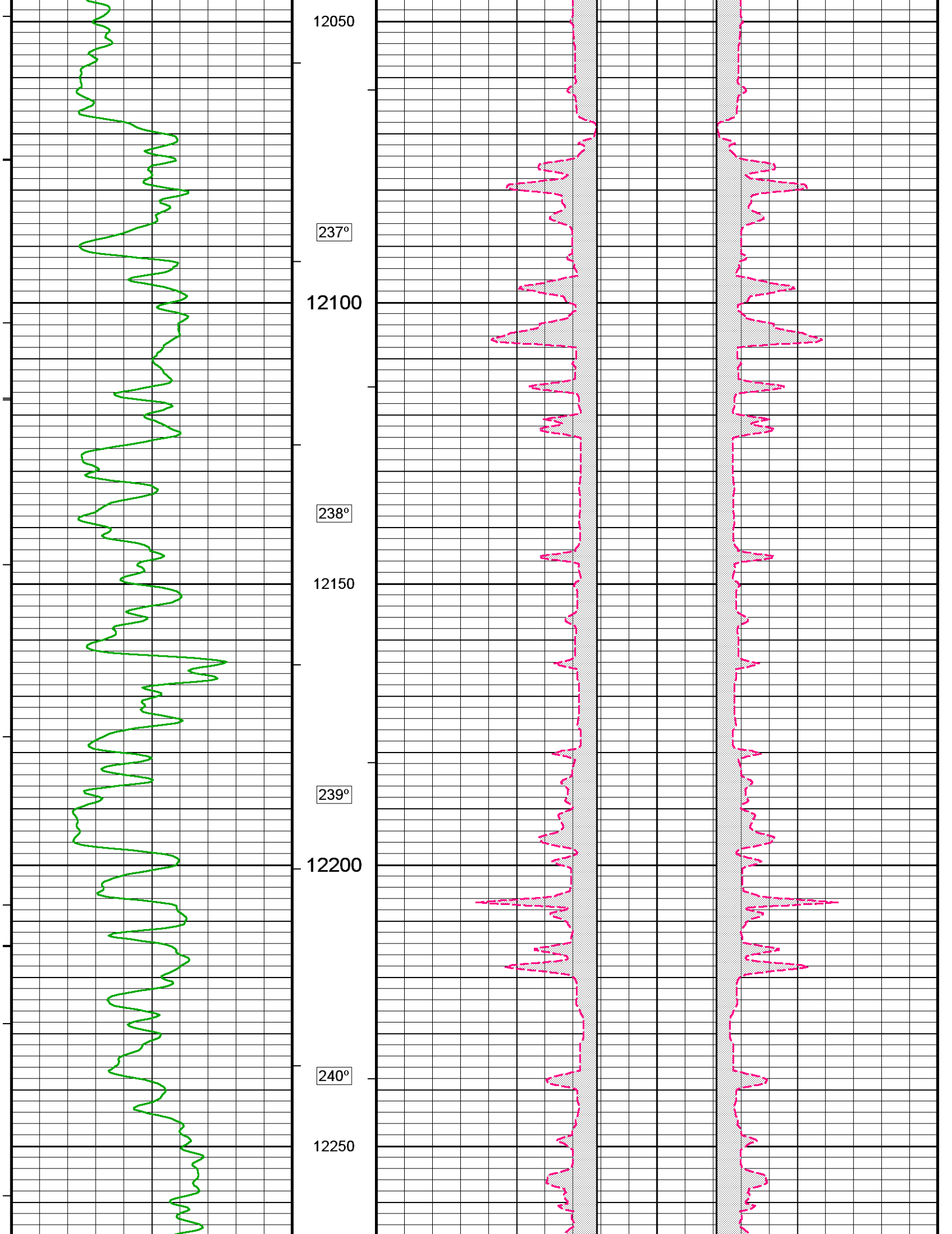


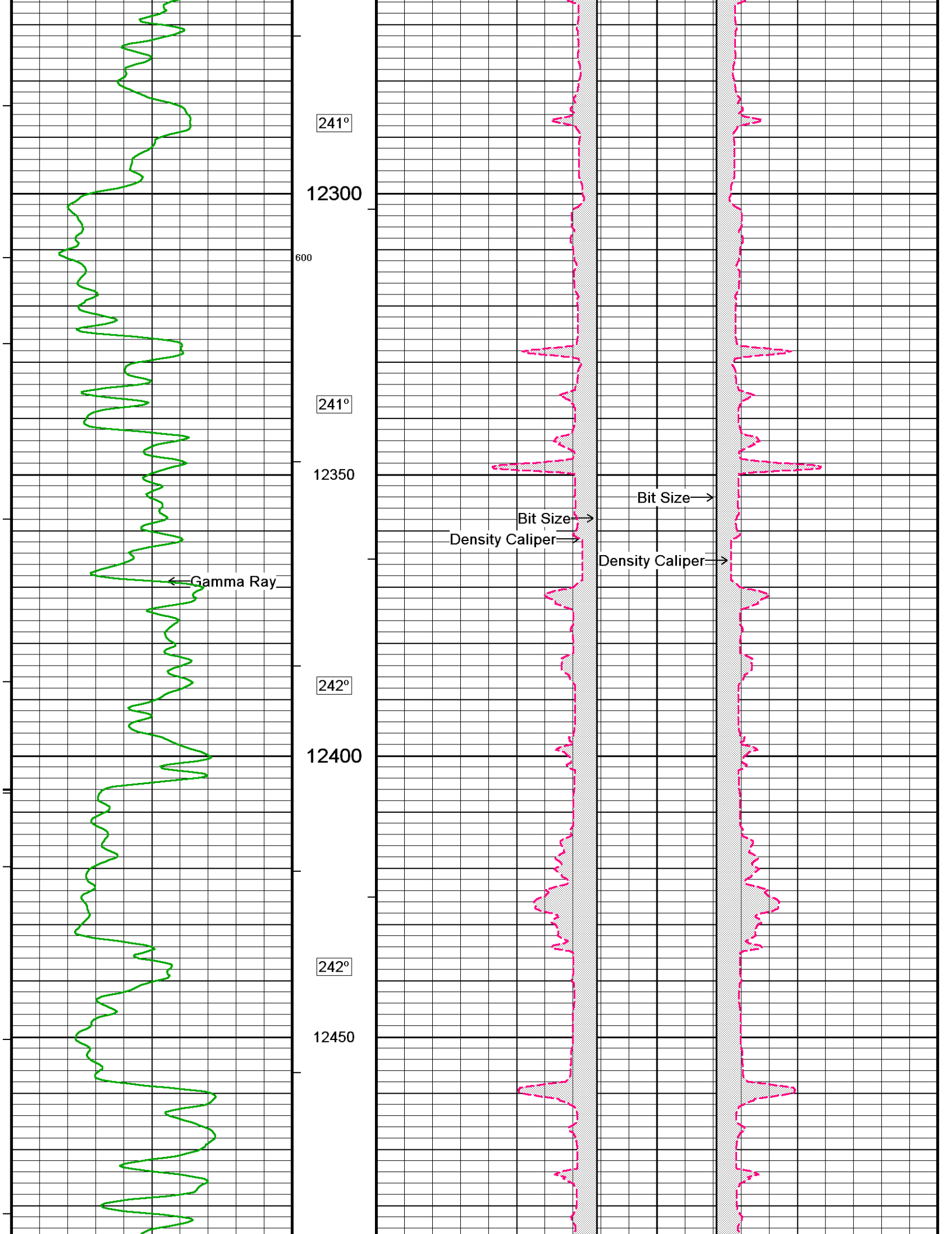


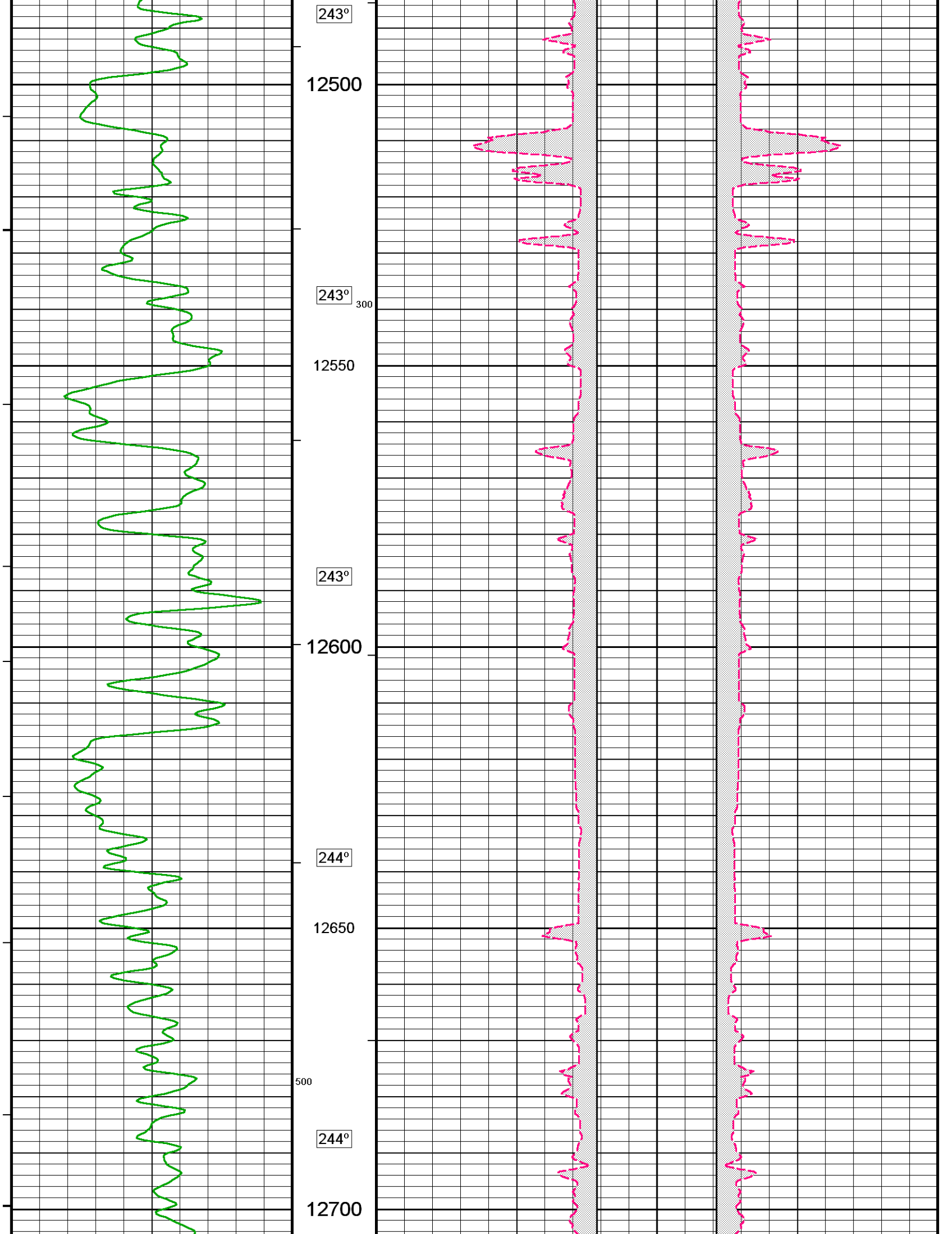


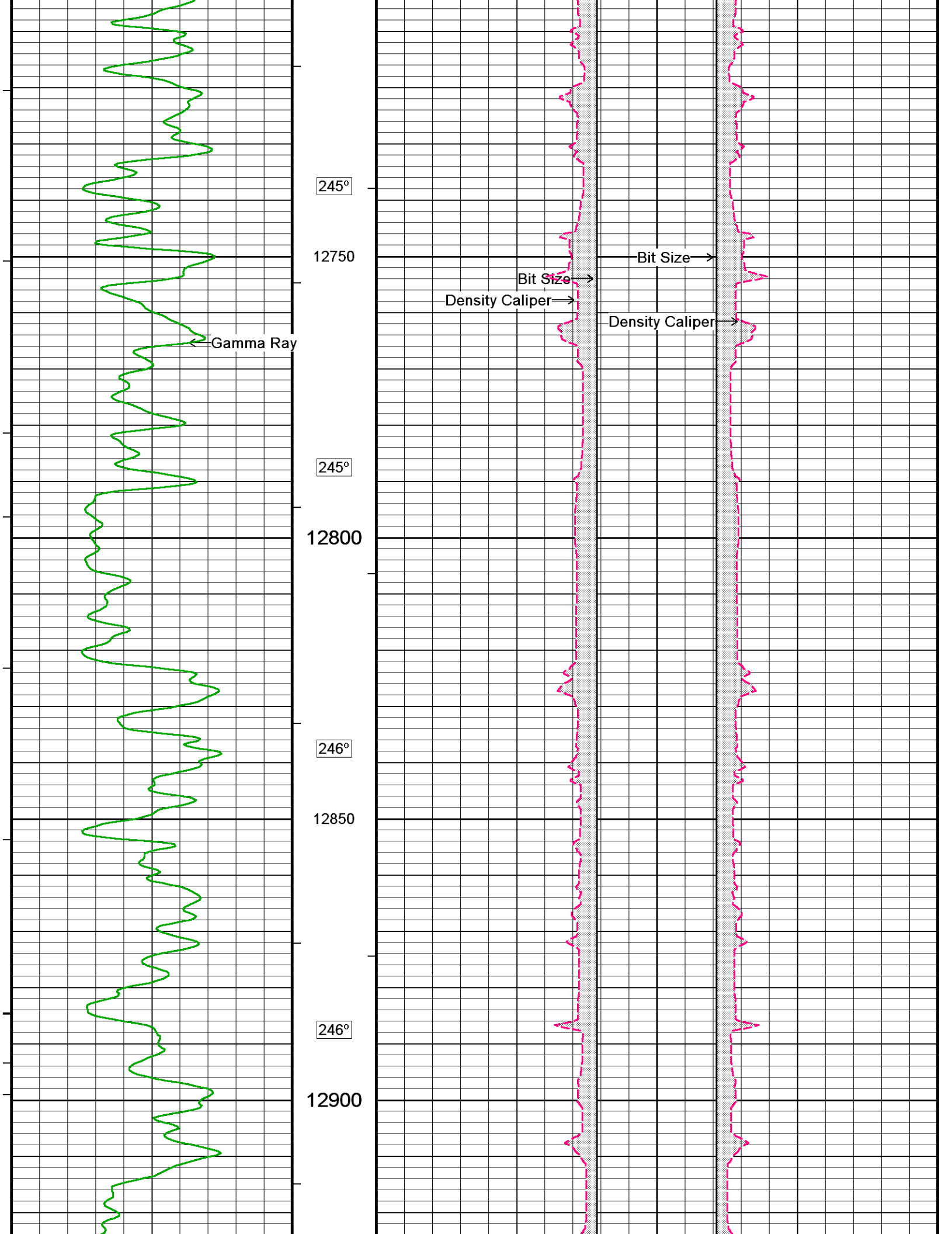


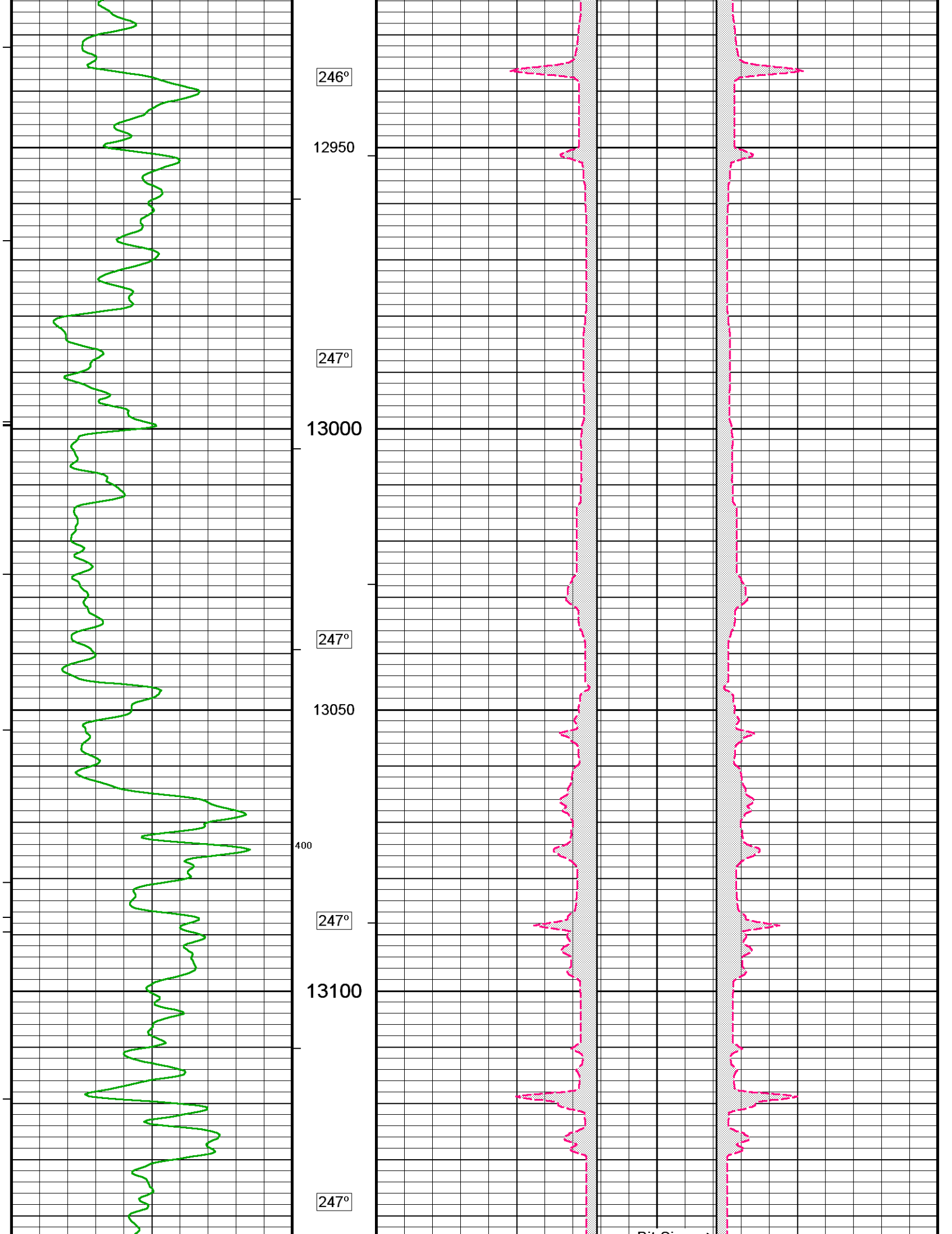


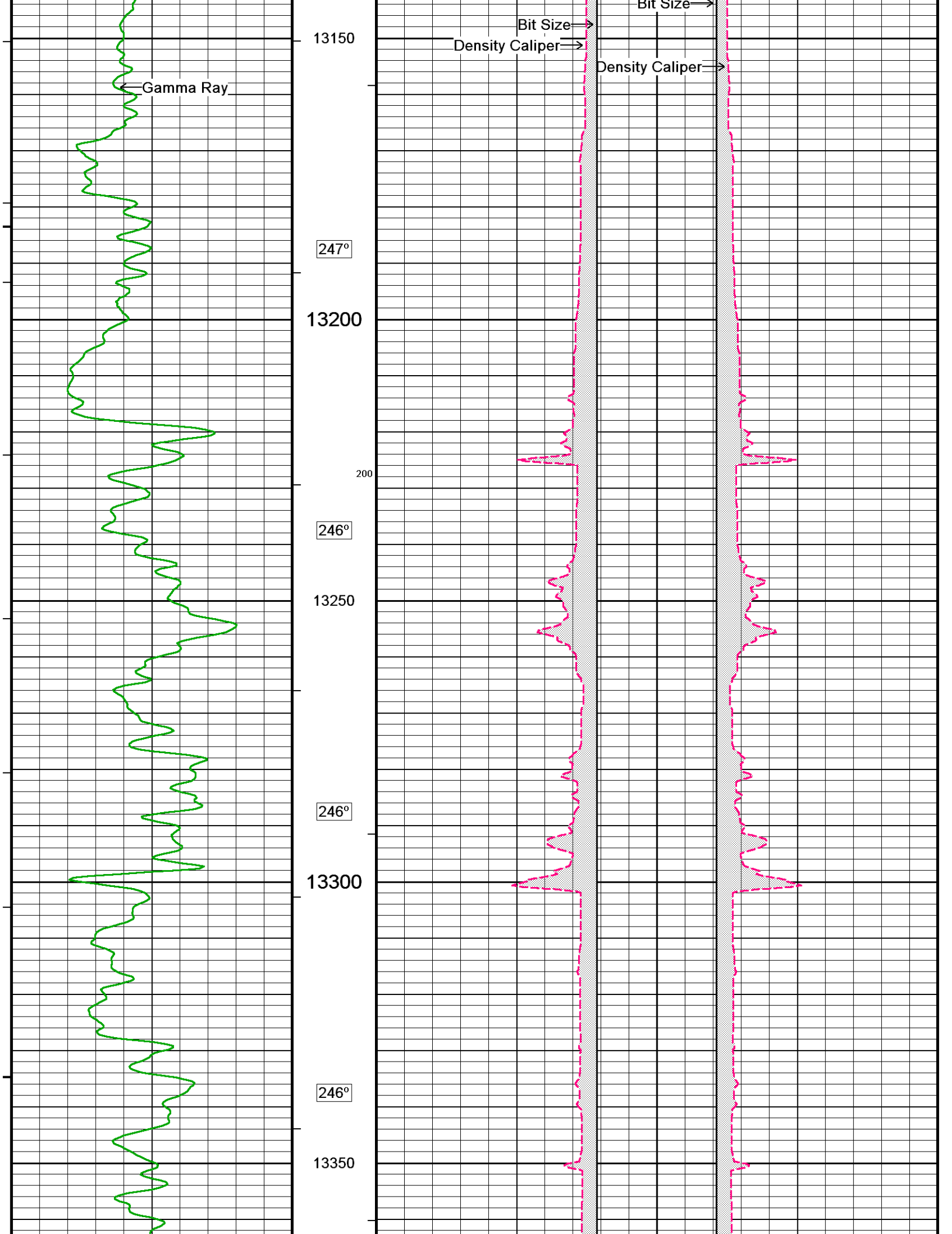


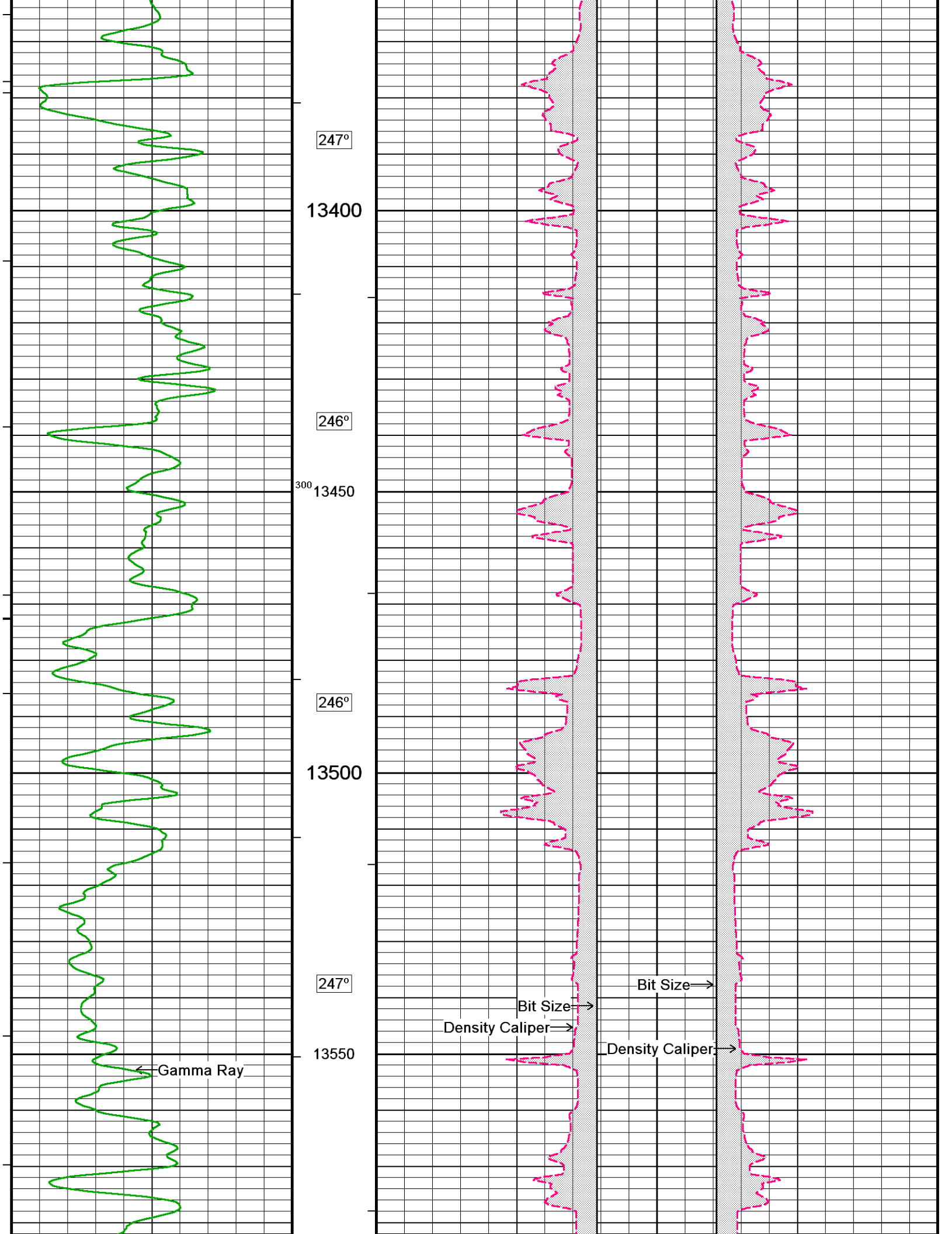


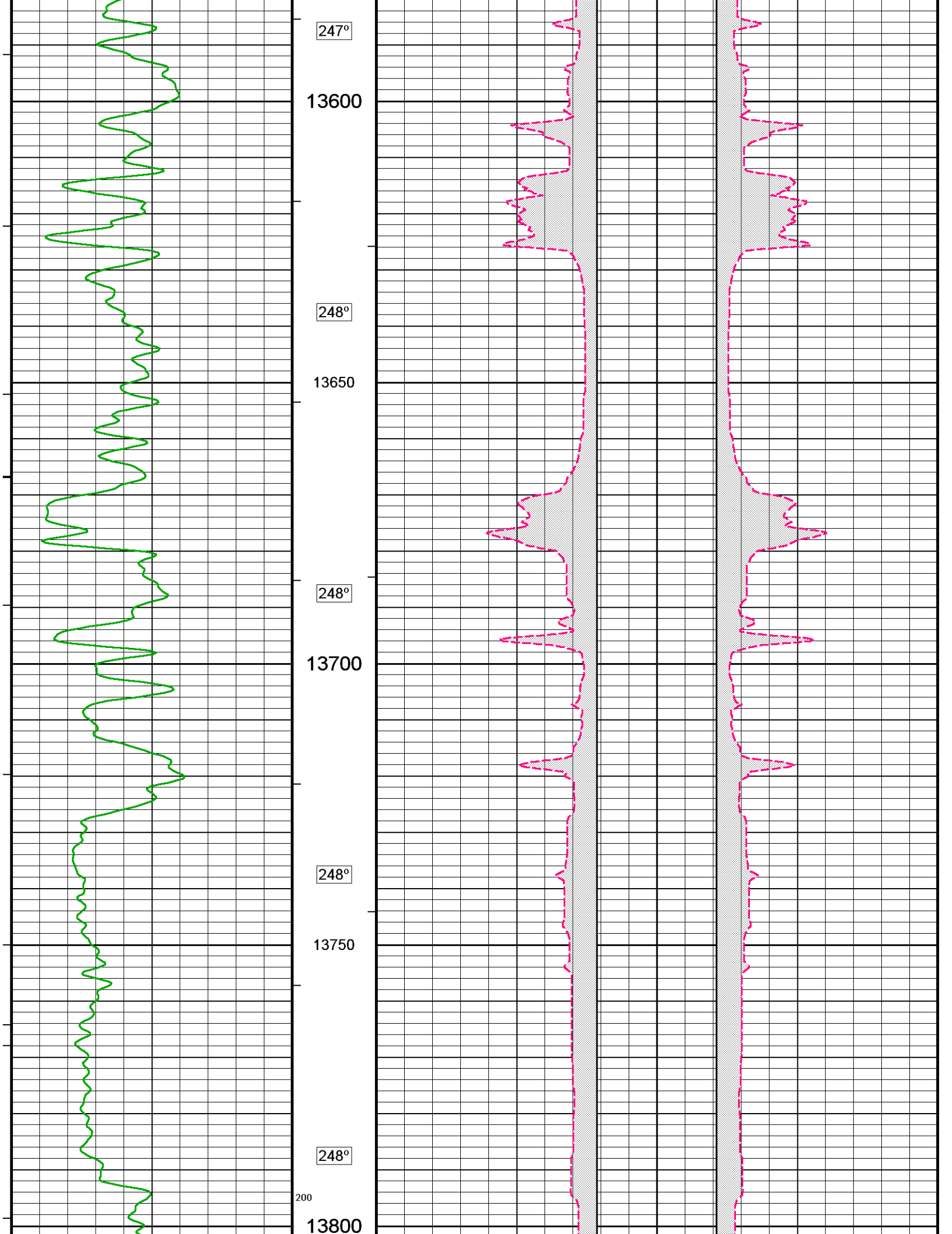


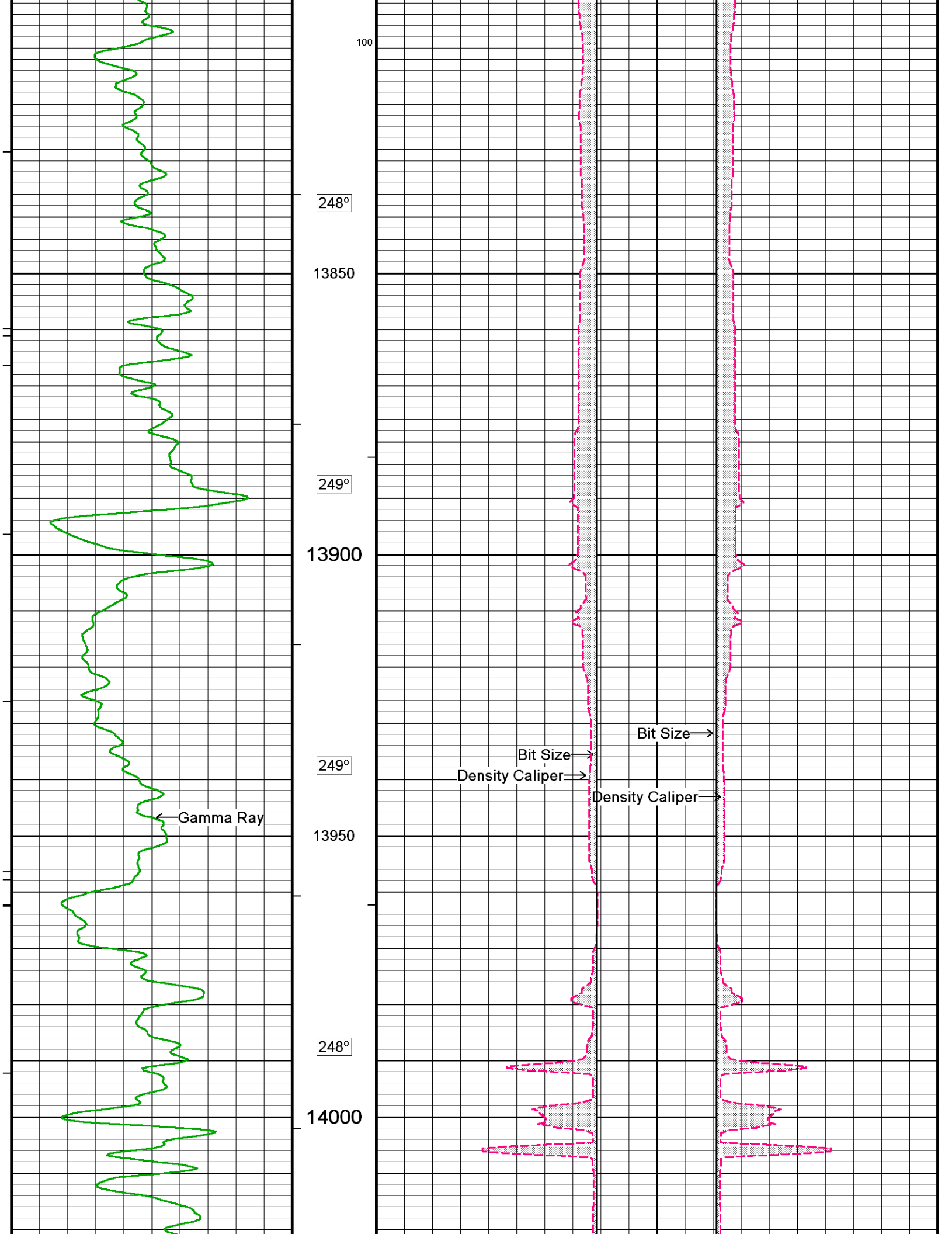


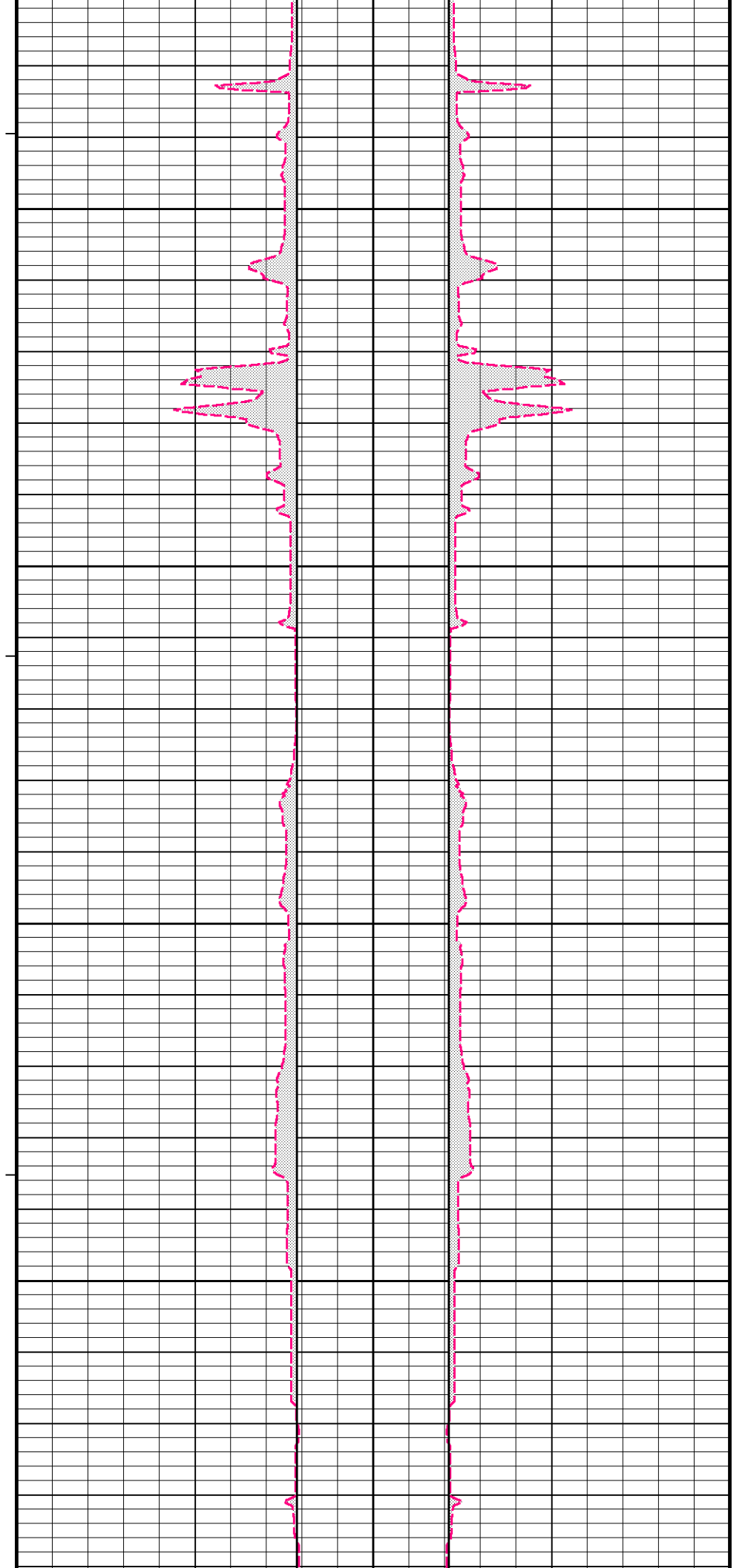
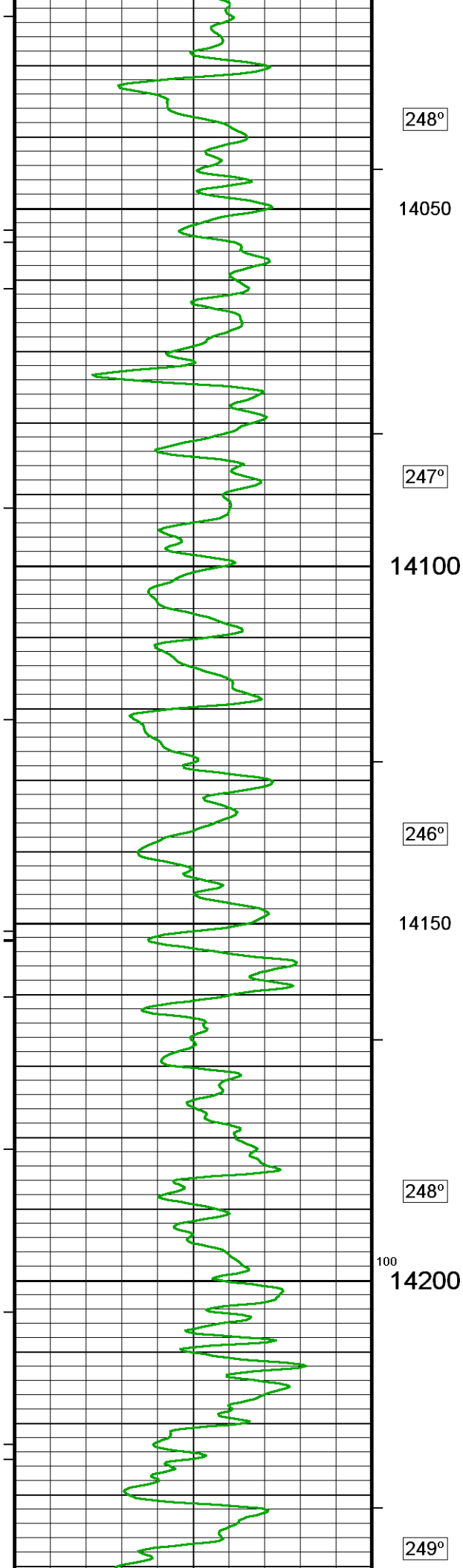


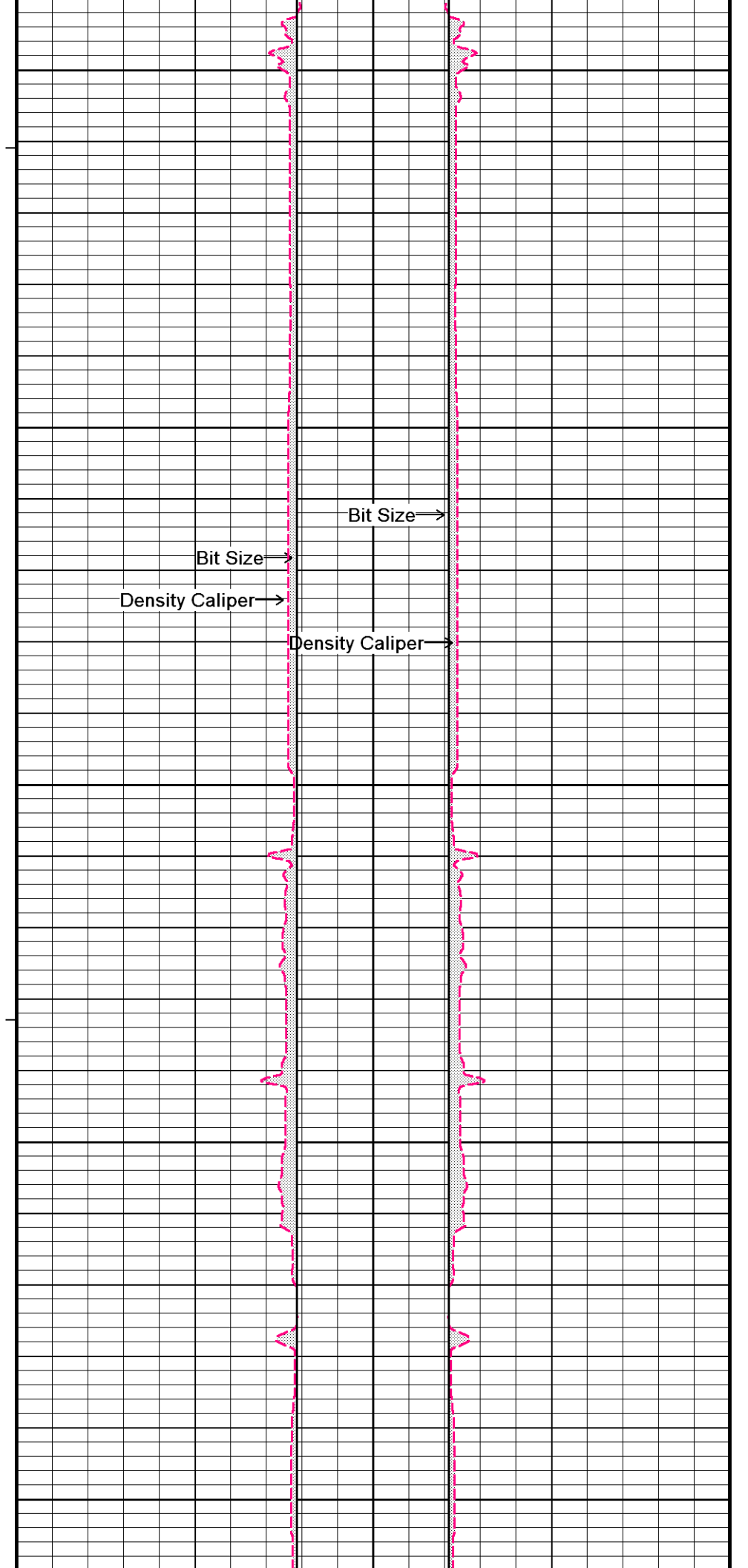
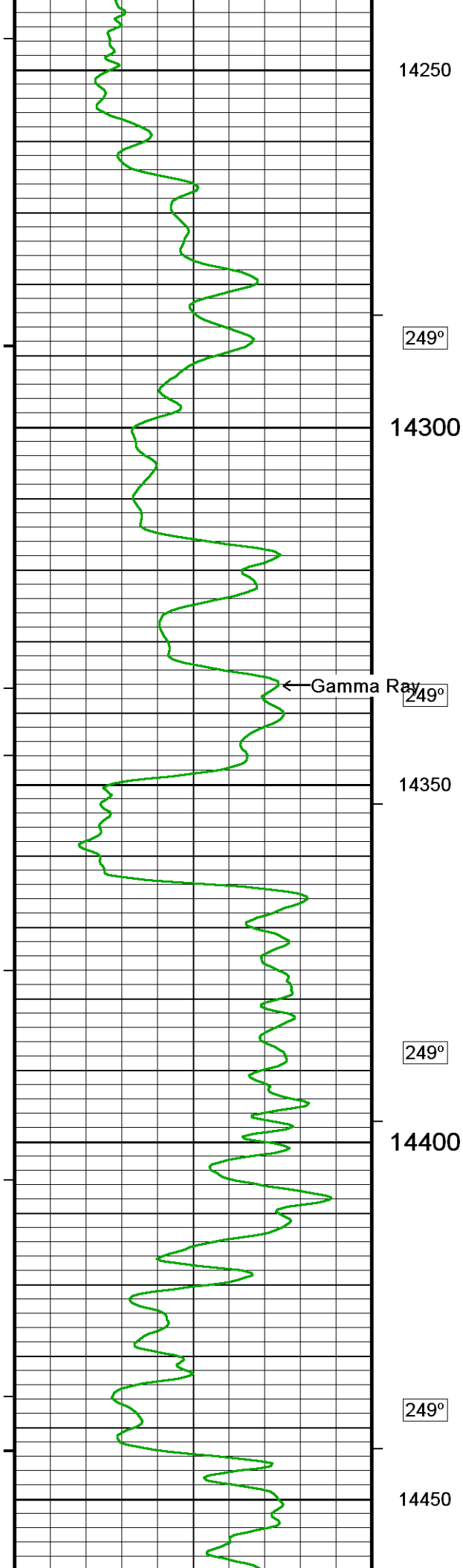


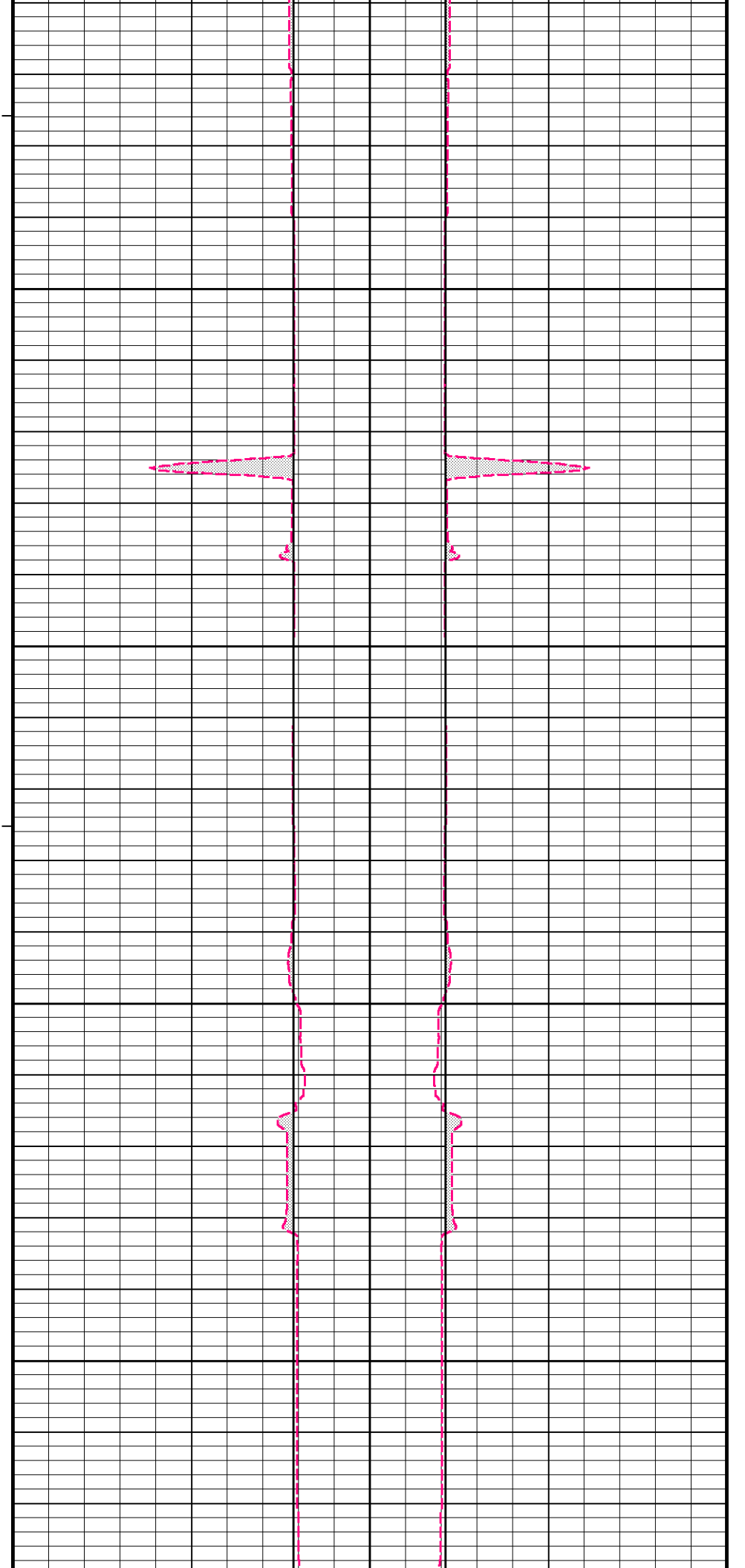
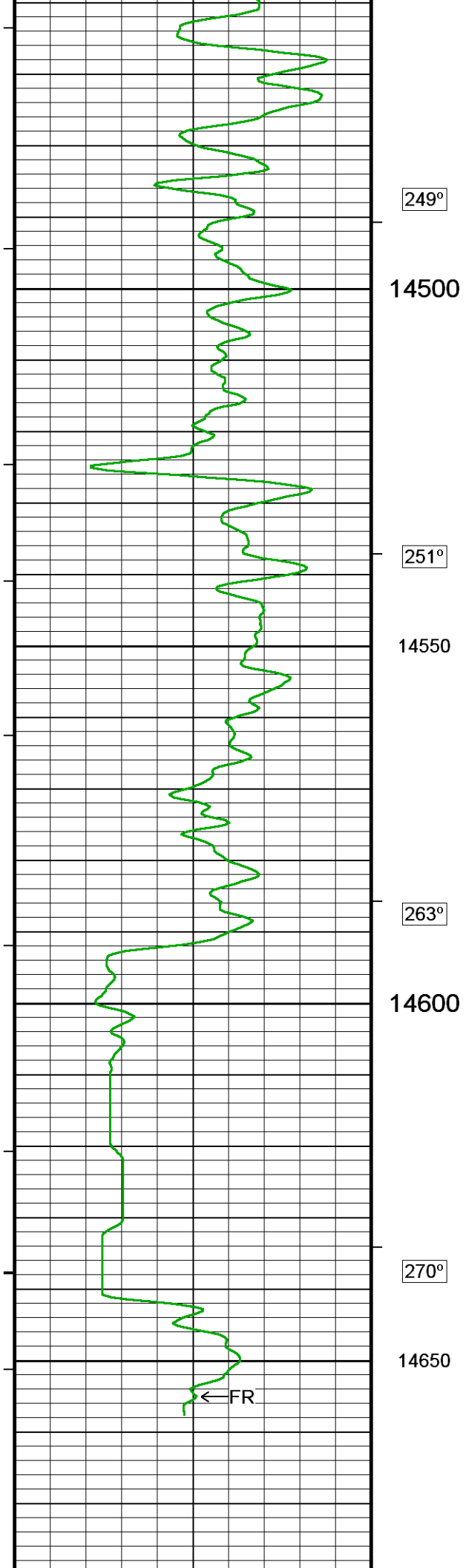


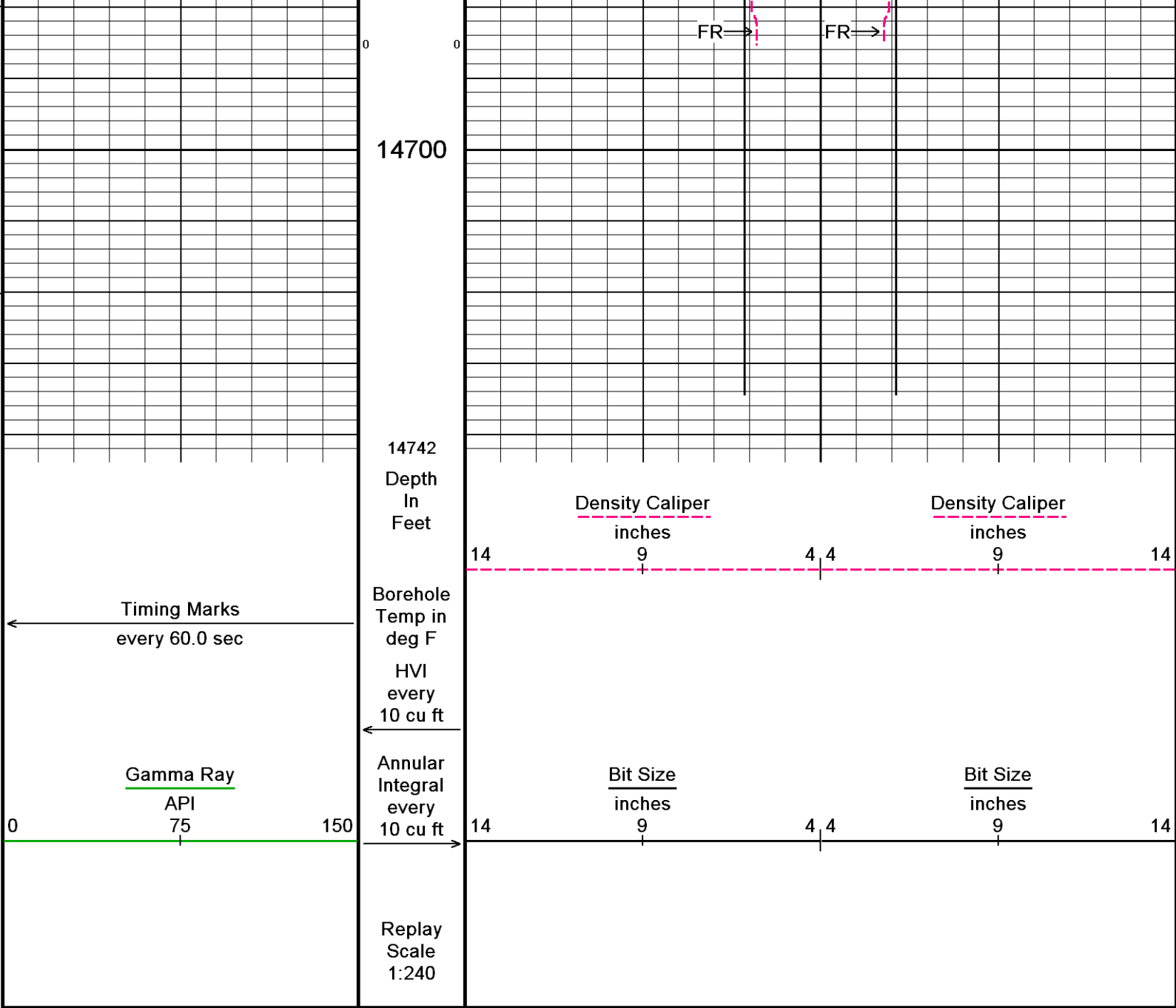












Depth Based Data - Maximum Sampling Increment 10.0cm
Filename: C:\DOCUME~1\BrunsHB1\LOCALS~1\Temp\Weatherford PreView\NPU 196-19B1_002.dta
System Versions: Logged with 10.08.1568 Processed with 10.08.1568 Plotted with 11.02.2119
Plotted on 05-NOV-2010 11:26
Recorded on 29-OCT-2010 10:50

↑ Depth Log ↑

COMPANY	EXXON MOBIL CORPORATION				
WELL	NORTH PICEANCE CREEK 196-19B1				
FIELD	PICEANCE CREEK				
PROVINCE/COUNTY	RIO BLANCO				
COUNTRY/STATE	U.S.A. / COLORADO				
Elevation Kelly Bushing	6912.50	feet	First Reading	14685.00	feet
Elevation Drill Floor	6911.50	feet	Depth Driller	14761.00	feet
Elevation Ground Level	6882.50	feet	Depth Logger	14761.00	feet

Wachstumsfortschritt

200

