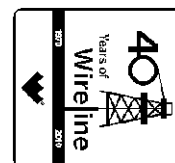




Weatherford

**COMPACT WELL SHUTTLE
HOLE VOLUME
LOG**

COMPANY **EXXON MOBIL CORPORATION**
WELL **NORTH PICEANCE CREEK 196-19B1**
FIELD **PICEANCE CREEK**
PROVINCE/COUNTY **RIO BLANCO**
COUNTRY/STATE **U.S.A. / COLORADO**
LOCATION **SHL: 2493' FNL & 423' FEL**



| LSD | SEC | TWP | RGE | Other Services |
|------------------------|--------------------------------------|-----|-----|--------------------------------|
| | 19 | 1S | 96W | DENSITY/NEUTRON RESISTIVITY |
| API Number | 05-103-1108100 | | | SONIC |
| Permit Number | 05-103-1108100 | | | |
| Permanent Datum | G.L., Elevation 6882.5 feet | | | |
| Log Measured From | K.B. @ 30 FEET above Permanent Datum | | | |
| Drilling Measured From | K.B. | | | |

Elevations:
KB 6912.50
DF 6911.50
GL 6882.50

| | | |
|------------------------|--------------|---------------|
| Date | 29-OCT-2010 | |
| Run Number | ONE | |
| Depth Driller | 14761.00 | feet |
| Depth Logger | 14761.00 | feet |
| First Reading | 14685.00 | feet |
| Last Reading | 11154.00 | feet |
| Casing Driller | 11164.00 | feet |
| Casing Logger | 11154.00 | feet |
| Bit Size | 6.125 | inches |
| Hole Fluid Type | GEL CHEM | |
| Density / Viscosity | 12.10 lb/USg | 58.00 CP |
| PH / Fluid Loss | 9.60 | 8.60 ml/30Min |
| Sample Source | FLOWLINE | |
| Rm @ Measured Temp | 2.52 @ 97.5 | ohm-m |
| Rmf @ Measured Temp | 2.02 @ 97.5 | ohm-m |
| Rmc @ Measured Temp | 3.02 @ 97.5 | ohm-m |
| Source Rmf / Rmc | CALC | CALC |
| Rm @ BHT | 0.93 @ 270.0 | ohm-m |
| Time Since Circulation | 0.5 HOURS | |
| Max Recorded Temp | 270.00 | deg F |
| Equipment Name | COMPACT | |
| Equipment / Base | 13038 | GDUCT |
| Recorded By | B. ROSSER | |
| Witnessed By | M. SAURBORN | R. OWENS |

BOREHOLE RECORD

Last Edited: 28-OCT-2010 11:59

| Bit Size inches | Depth From feet | Depth To feet |
|--------------------|--------------------|------------------|
| 6.125 | 11164.00 | 14761.00 |

CASING RECORD

| Type | Size inches | Depth From feet | Shoe Depth feet | Weight pounds/ft |
|--------|----------------|--------------------|--------------------|---------------------|
| INTERM | 7.000 | 0.00 | 11164.00 | 26.00 |

REMARKS

TOOLS: COMPACT DROP OFF, GAMMA RAY, NEUTRON, DENSITY, FOCUSED ELECTRIC, SONIC, AND INDUCTION RAN IN COMBINATION.

HARDWARE: DENSITY: 4 INCH PROFILE PLATE USED.
FOCUSED ELECTRIC: INLINE CENTRALIZERS USED.
SONIC: INLINE CENTRALIZERS USED.
INDUCTION: INLINE CENTRALIZERS USED.
SINGLE BOWSPRINGS USED FOR ECENTRALIZATION OF POROSITY TOOLS.

2.65 G/CC DENSITY MATRIX USED TO CALCULATE POROSITY.

ALL INTERVALS LOGGED AND SCALED PER CUSTOMER'S REQUEST.

DEPTH CONTROL TAKEN FROM PIPE STRAP AND TIED INTO INTERMEDIATE LOGS.

MFE NOT WORKING PROPERLY AND THEREFOR NOT SHOWN.

TWO FOOT RESOLUTION CURVES USE FOR INDUCTION DUE TO MFE NOT WORKING PROPERLY.

EEEC IS SHOWN ONLY AS ALTHOUGH IT IS NOT RELIABLE.

TEPC IS SHOWN ON LAS ALTHOUGH IT IS NOT RELIABLE.
IT IS BLOCKY FROM TD TO 11150 AND FLATLINED FROM 11150 TO CASING.

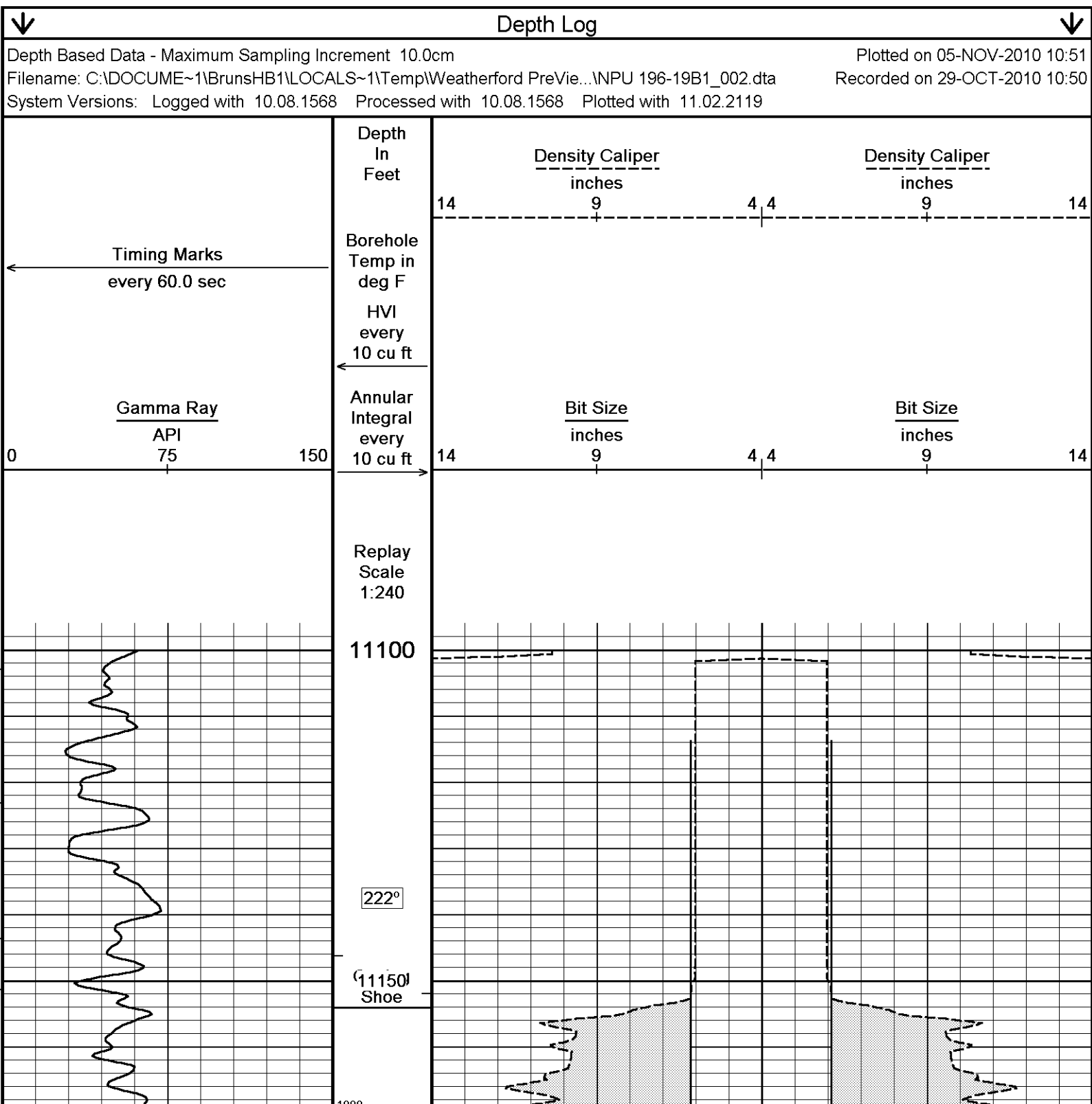
TIGHT PULLS, BOREHOLE SIZE, AND RUGOSITY WILL AFFECT DATA QUALITY.

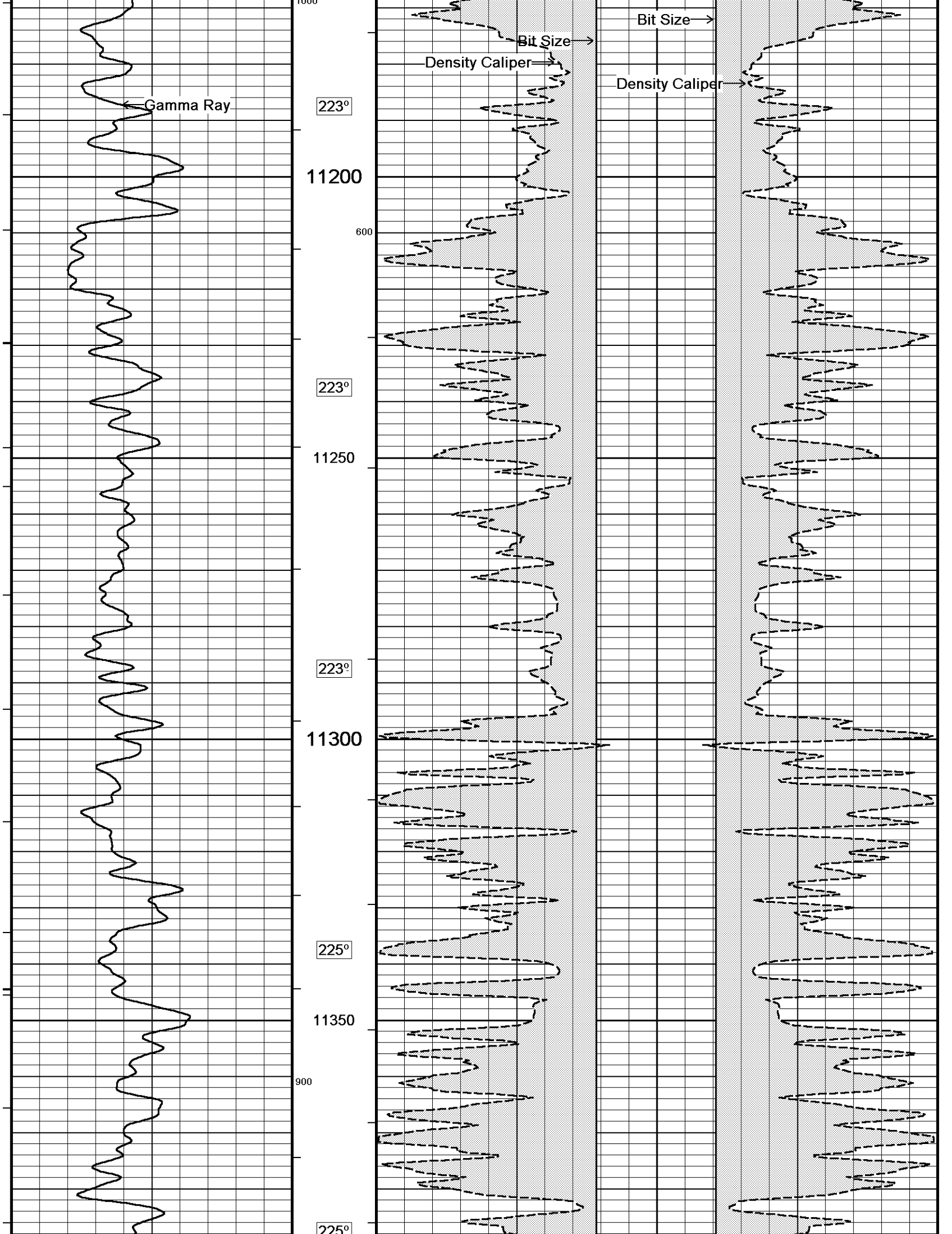
OPERATORS: J. YOAKUM, L. STAAKE

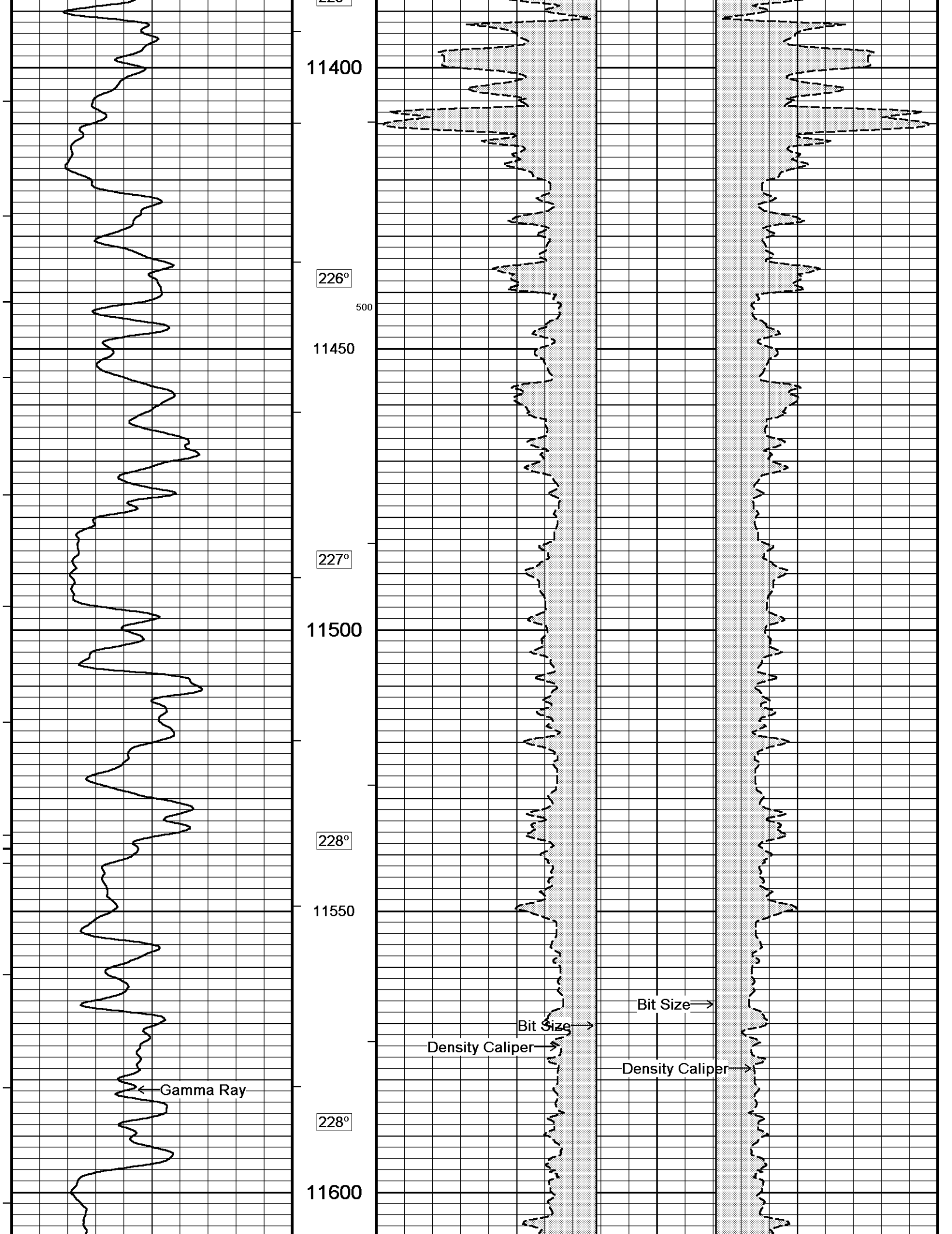
SERVICE ORDER: #3526128

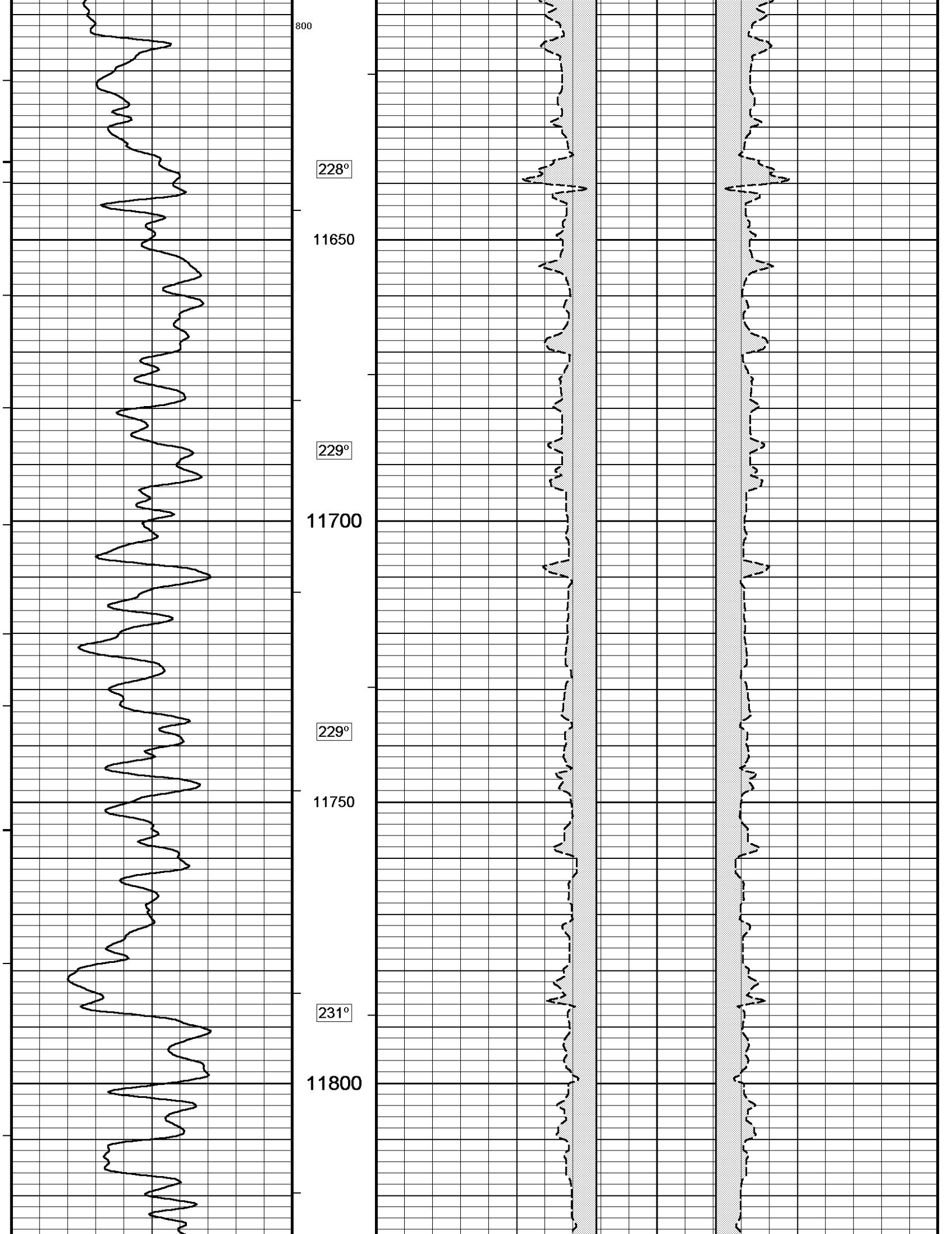
RIG: HP 215

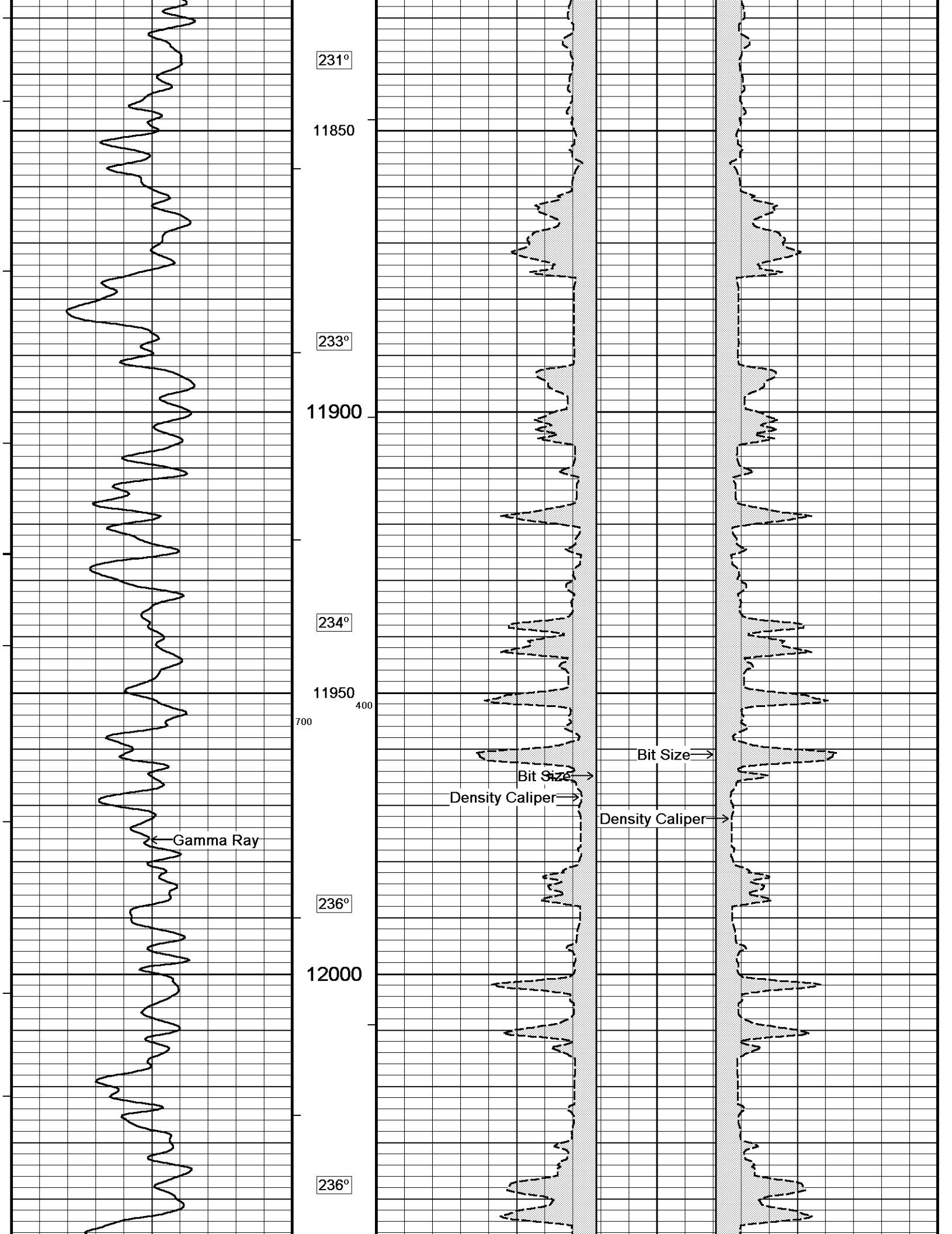
All interpretations are opinions based on inferences from electrical or other measurements and we cannot, and do not, guarantee the accuracy or correctness of any interpretations, and we shall not, except in the case of gross or wilful negligence on our part, be liable or responsible for any loss, costs, damages or expenses incurred or sustained by anyone resulting from any interpretation made by any of our officers, agents or employees. These interpretations are also subject to our general terms and conditions in our price schedule.

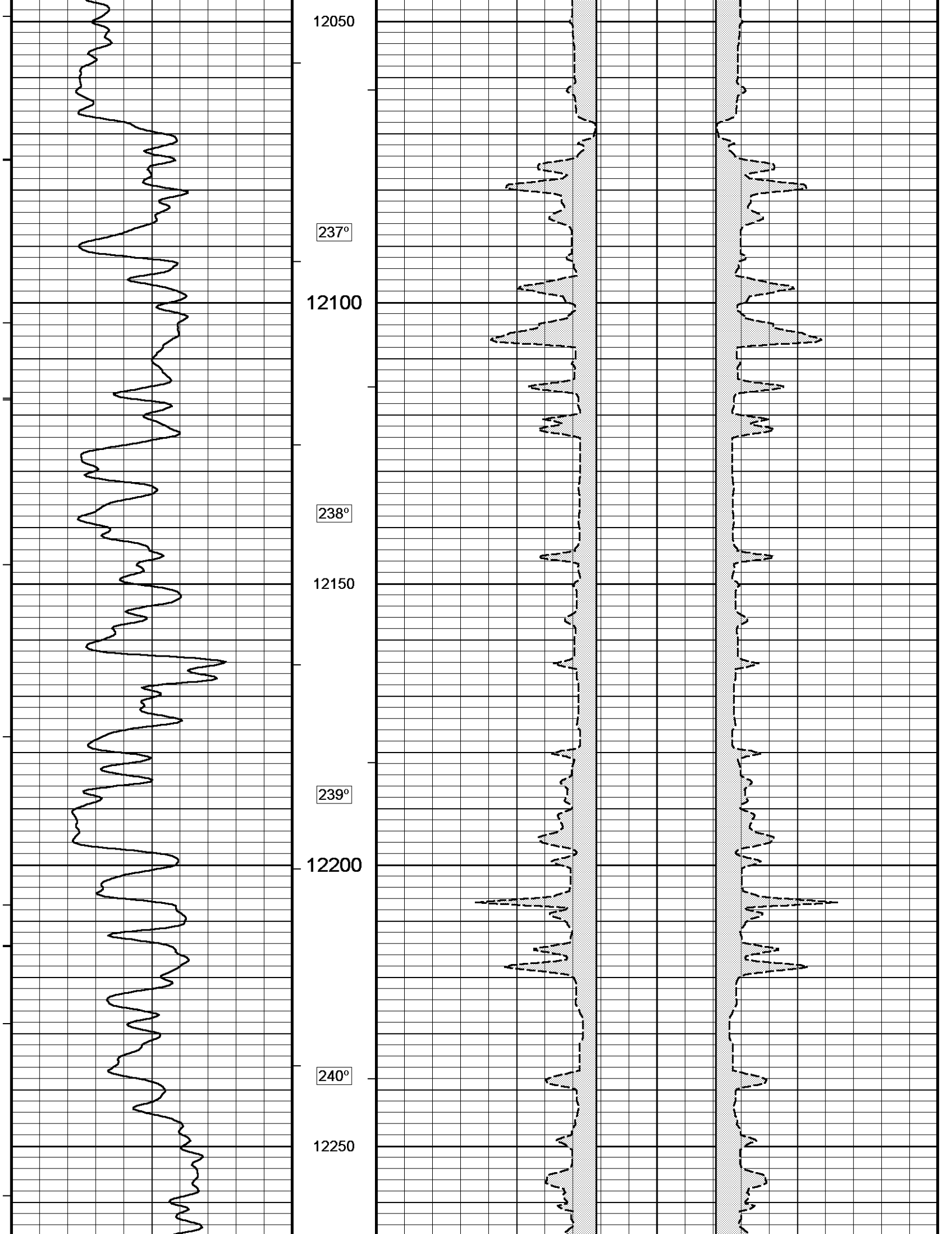


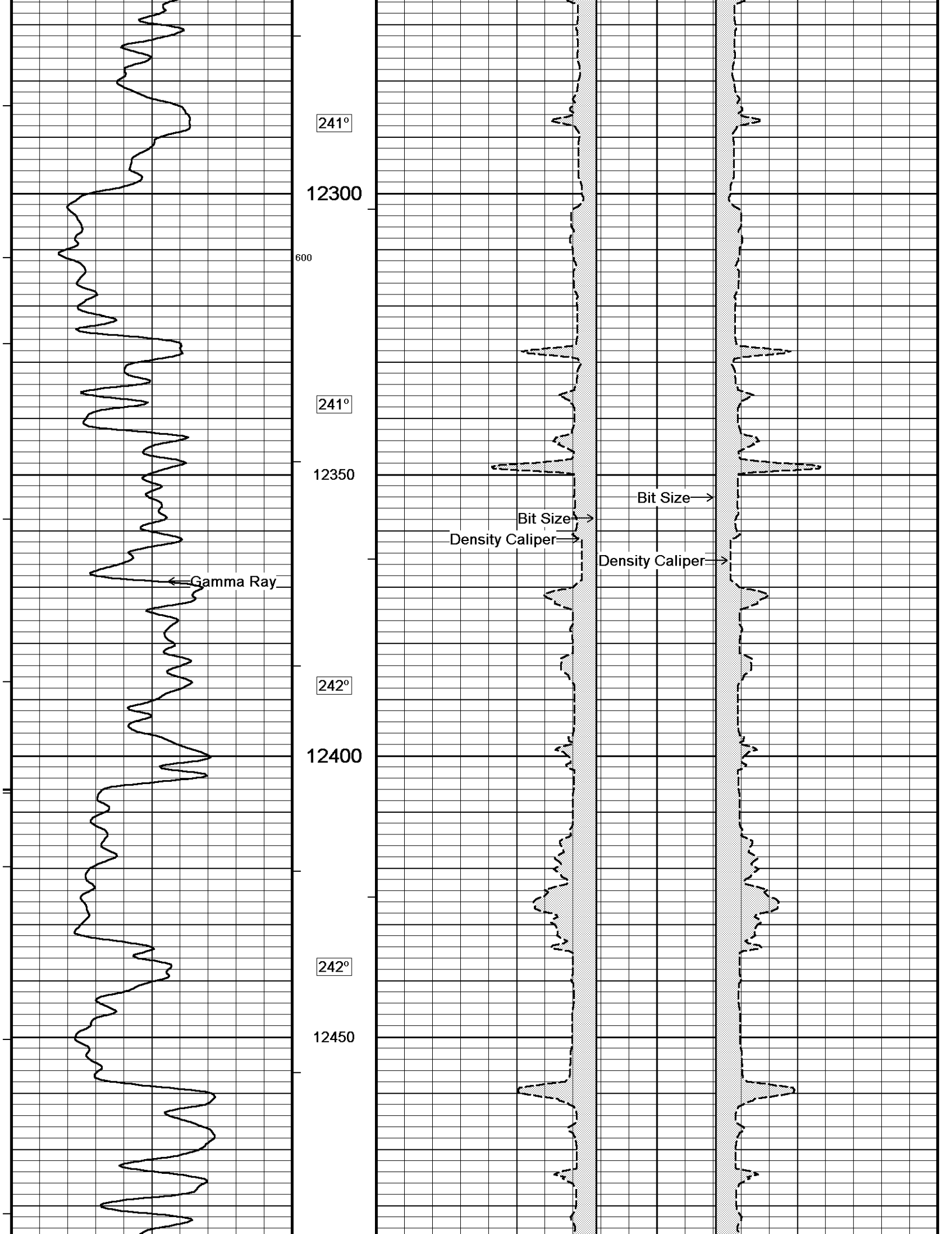


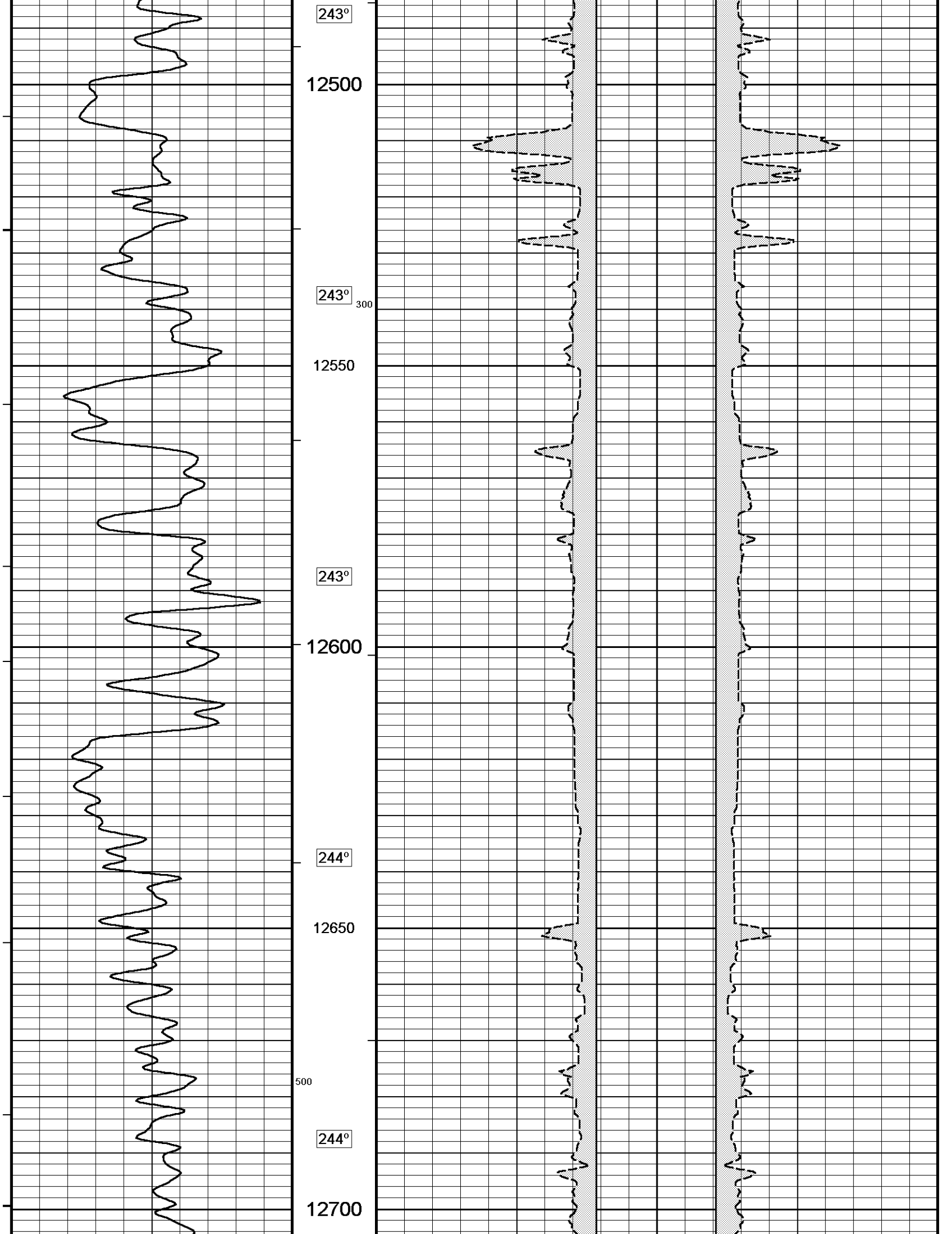


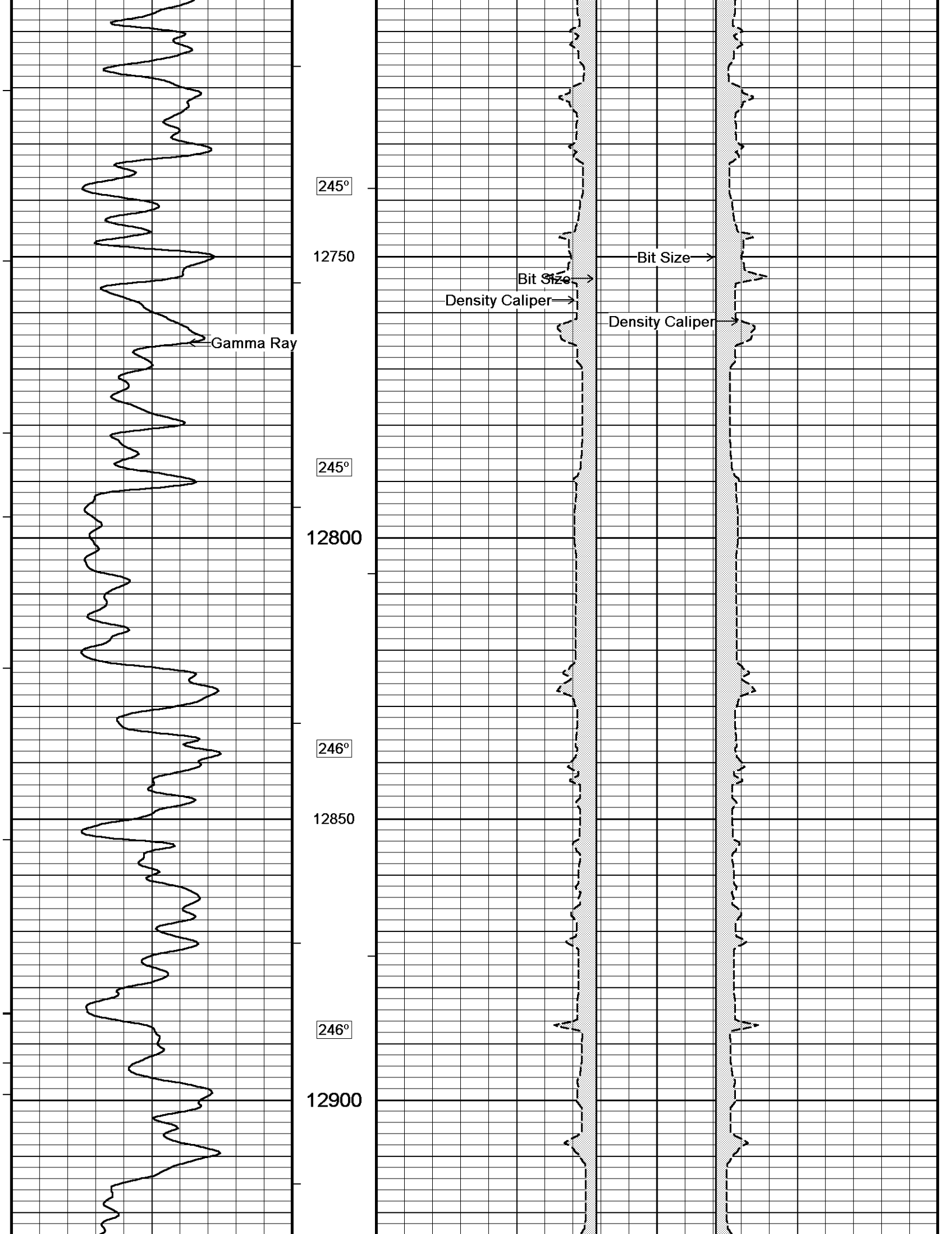


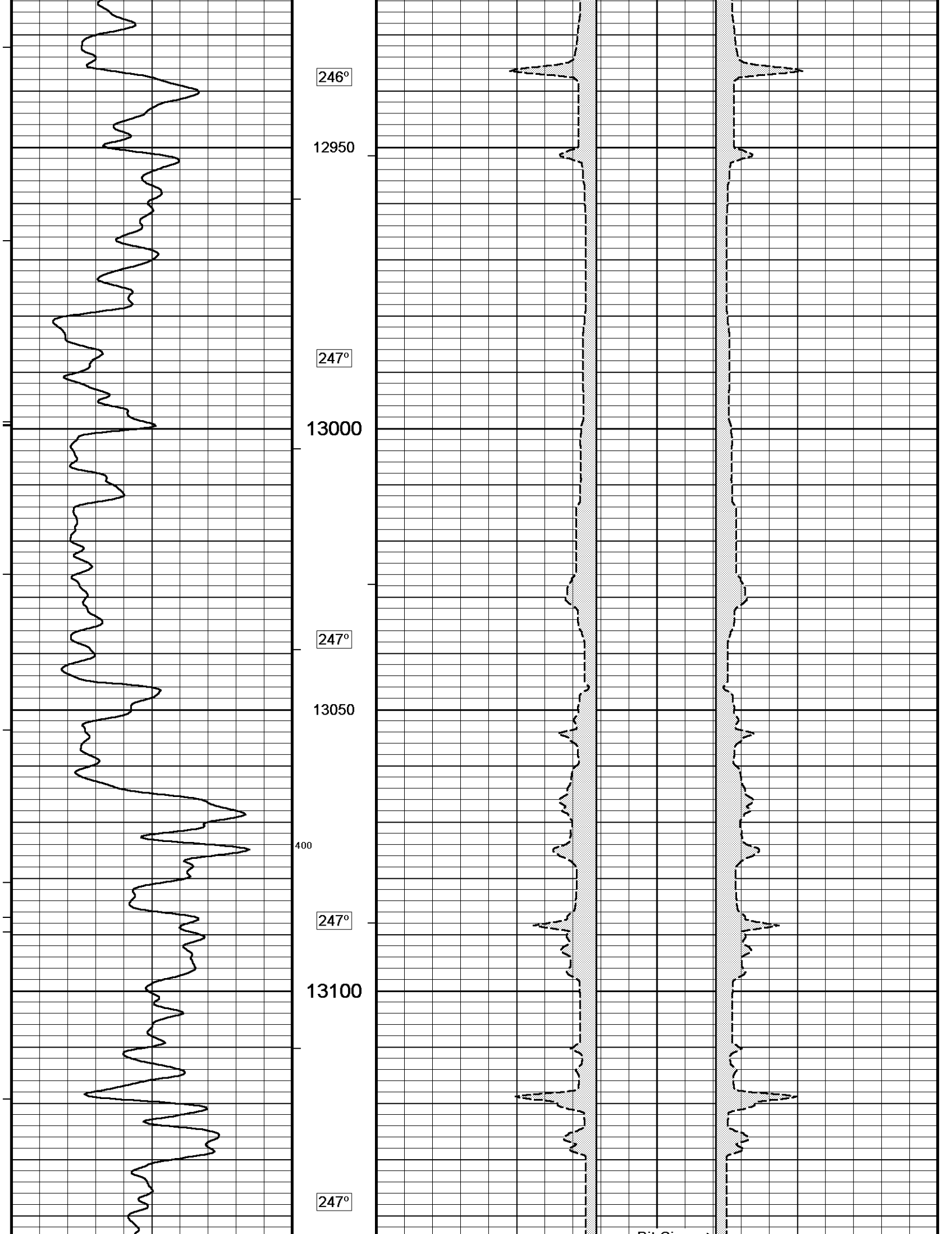


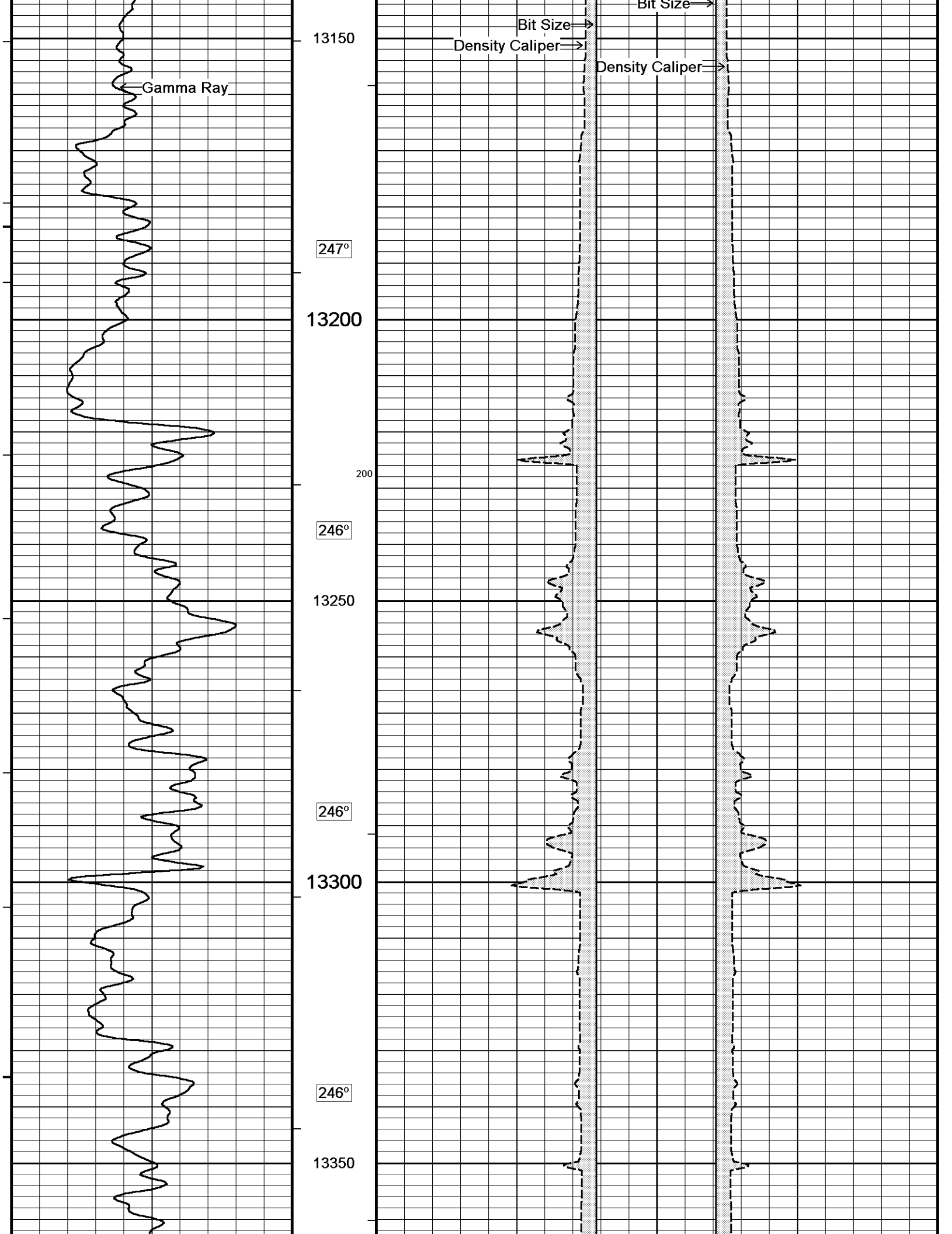


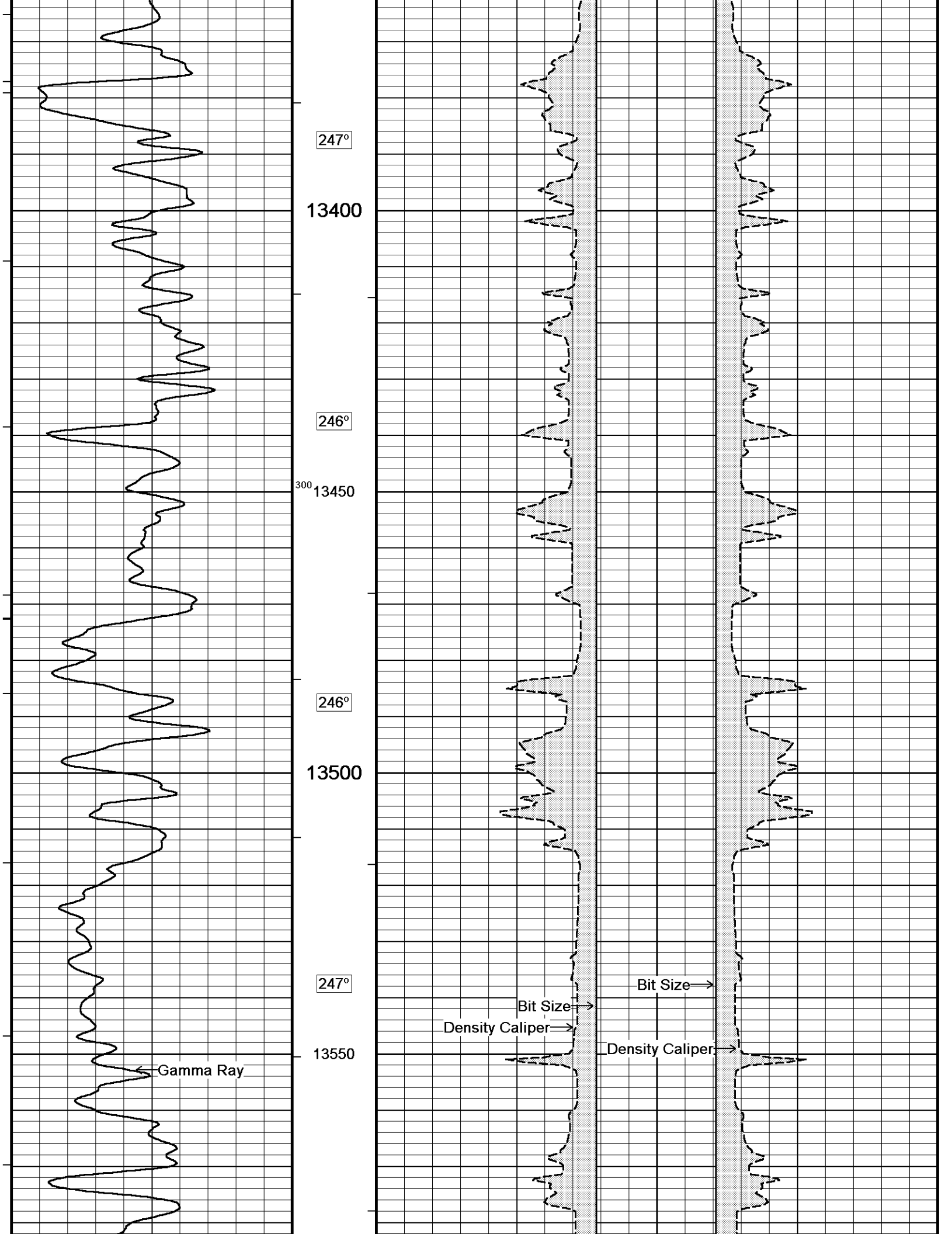


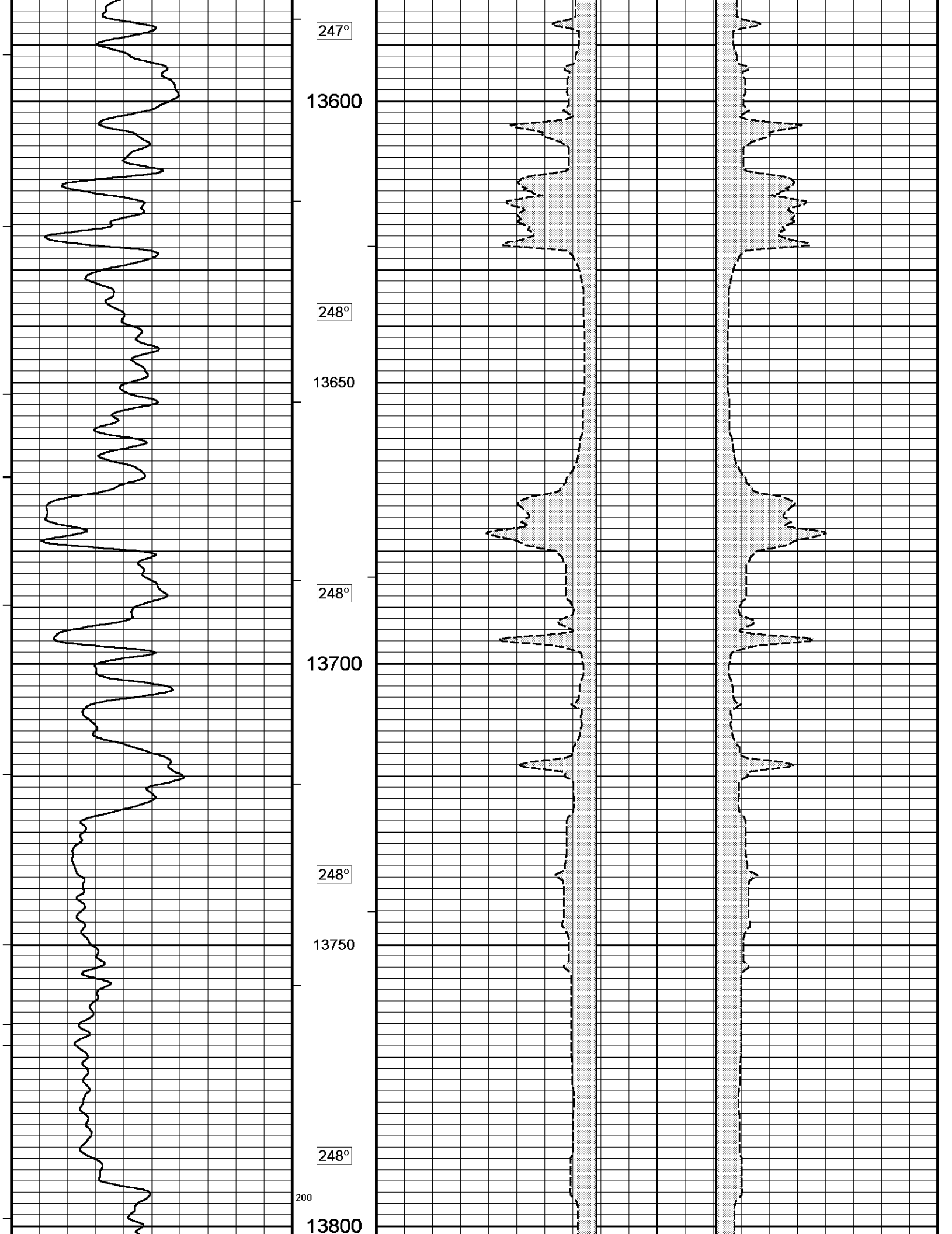


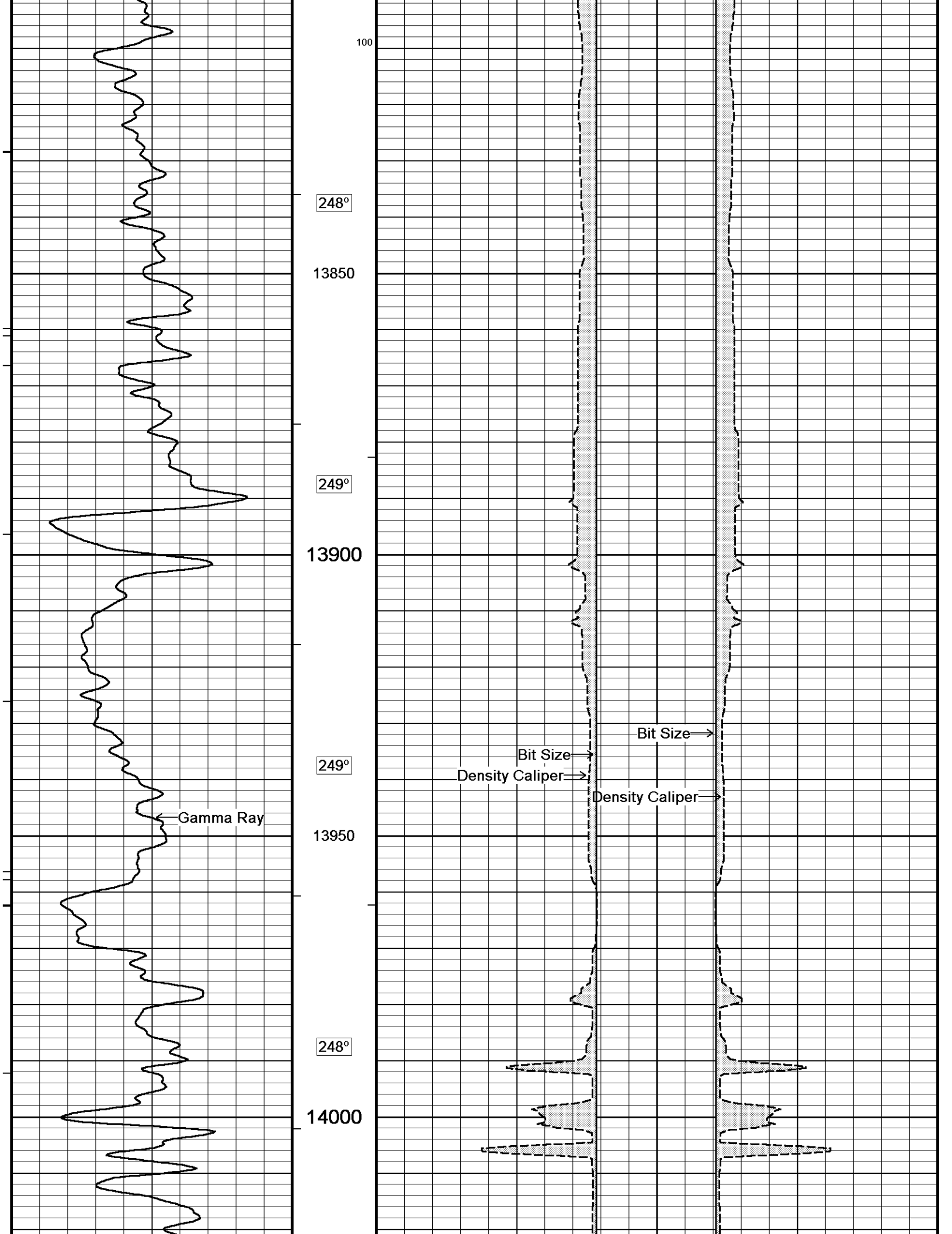


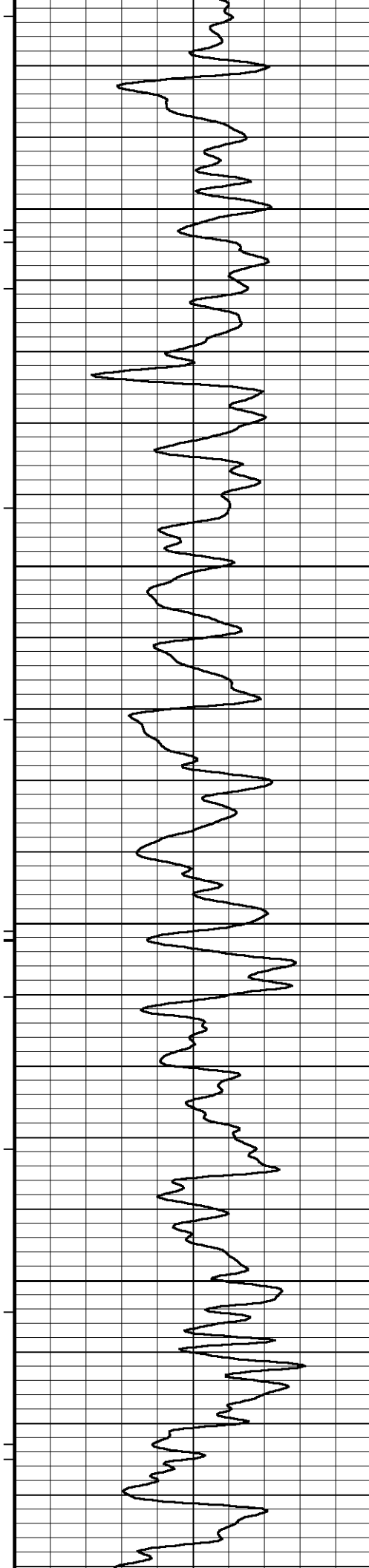












248°

14050

247°

14100

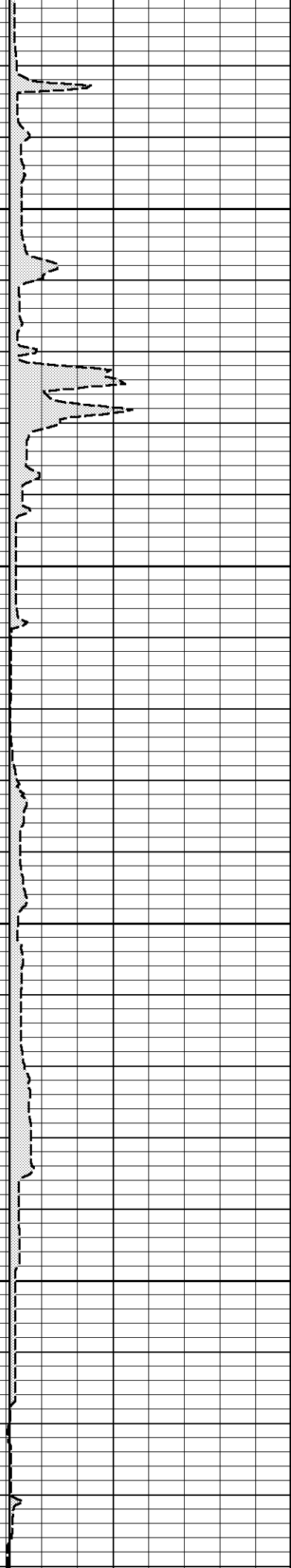
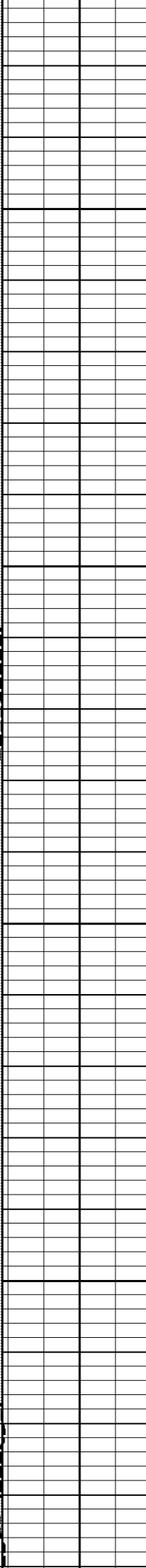
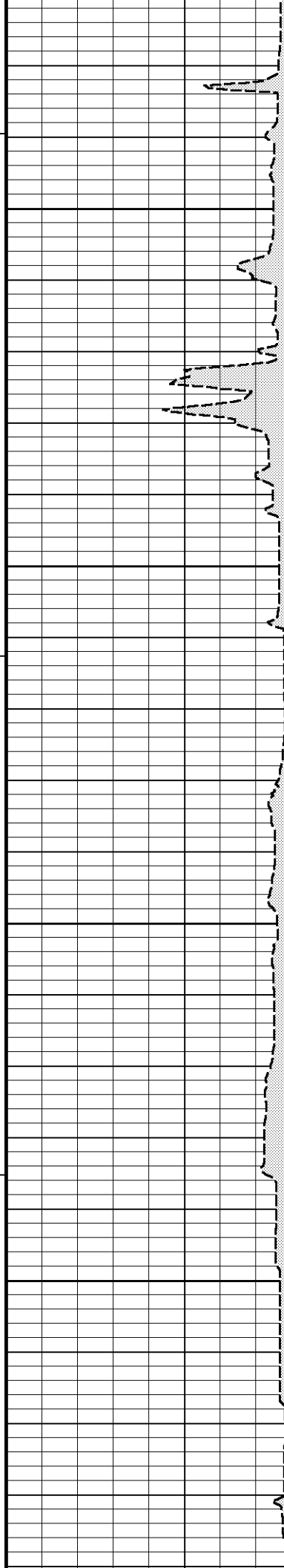
246°

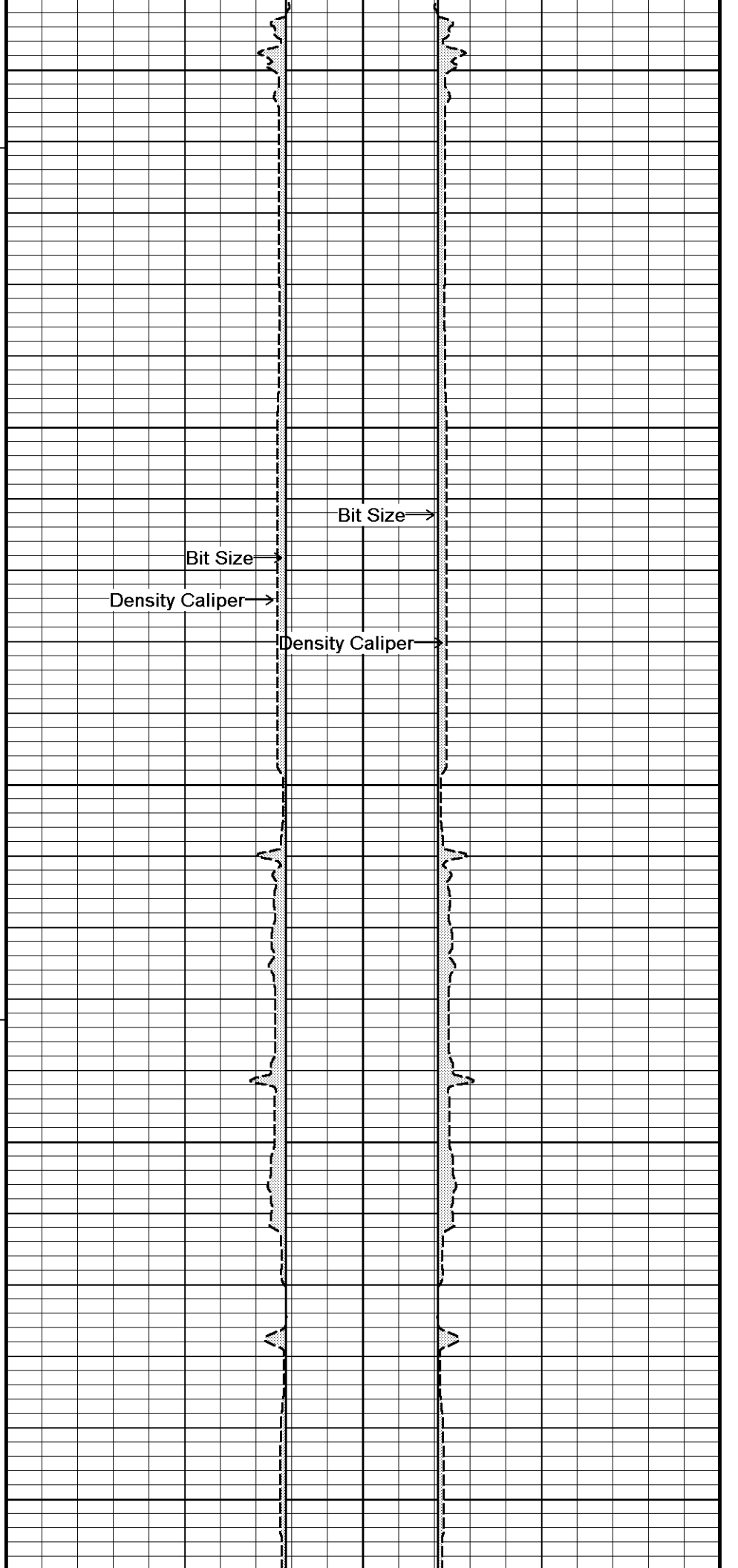
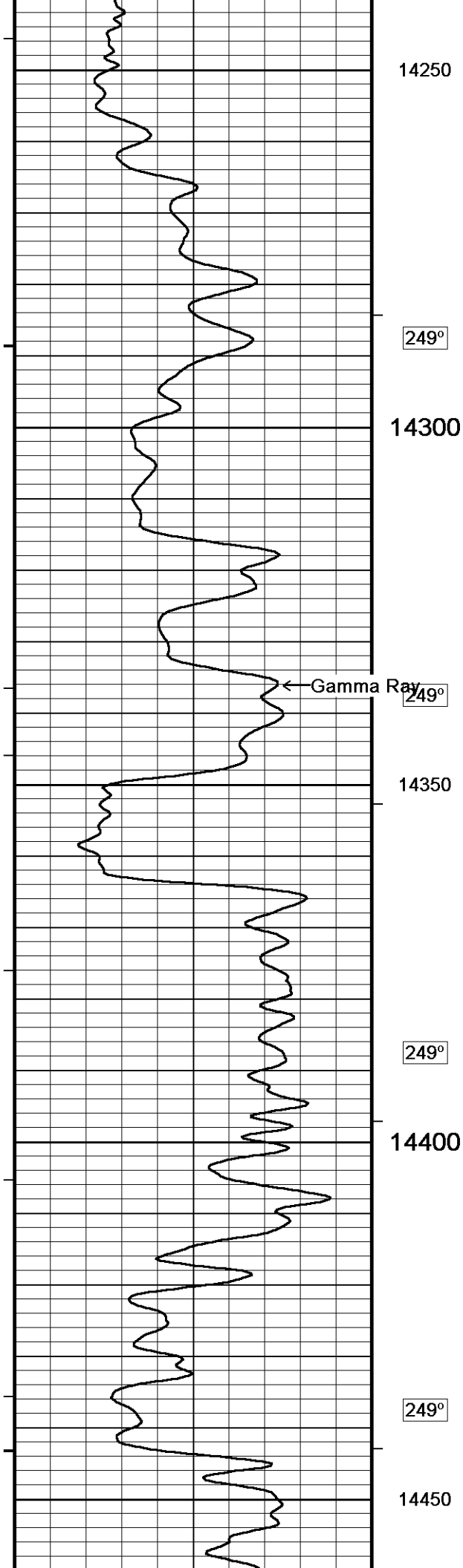
14150

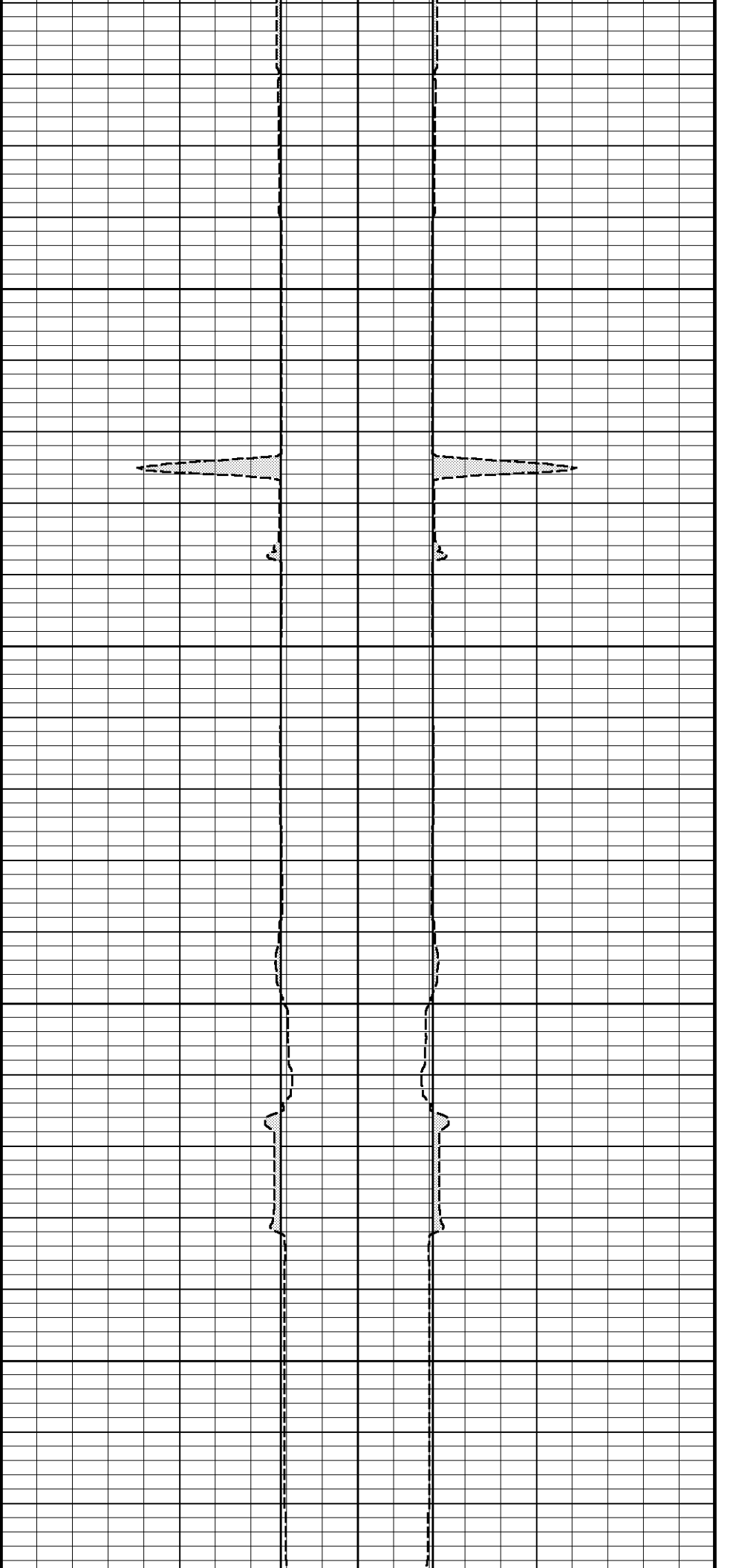
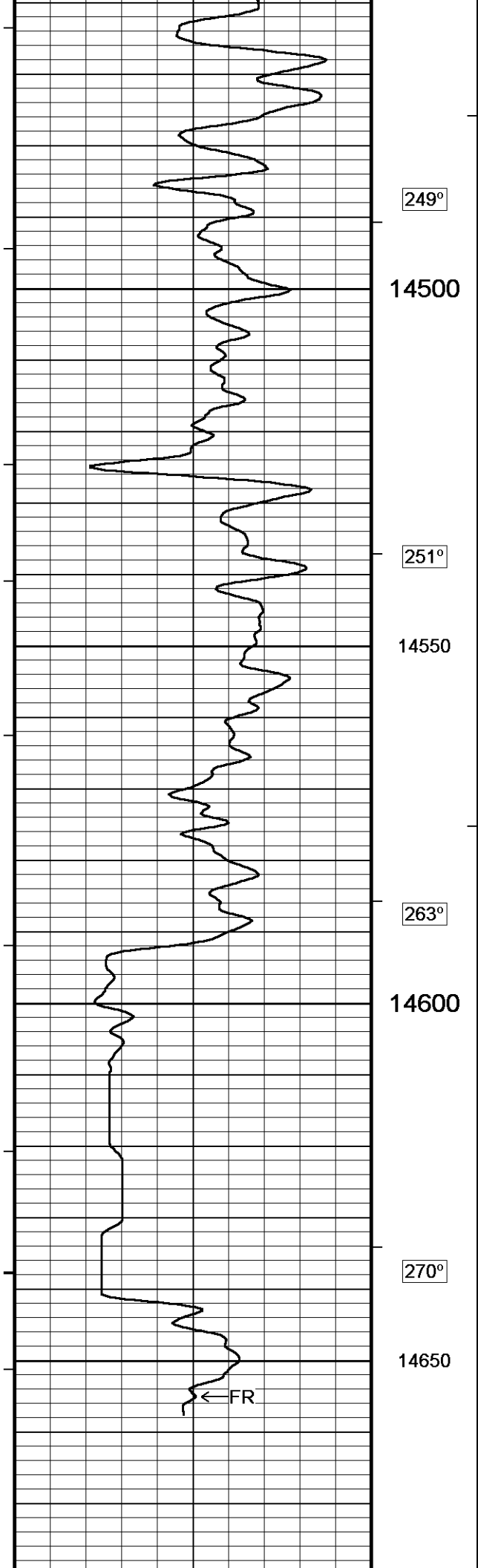
248°

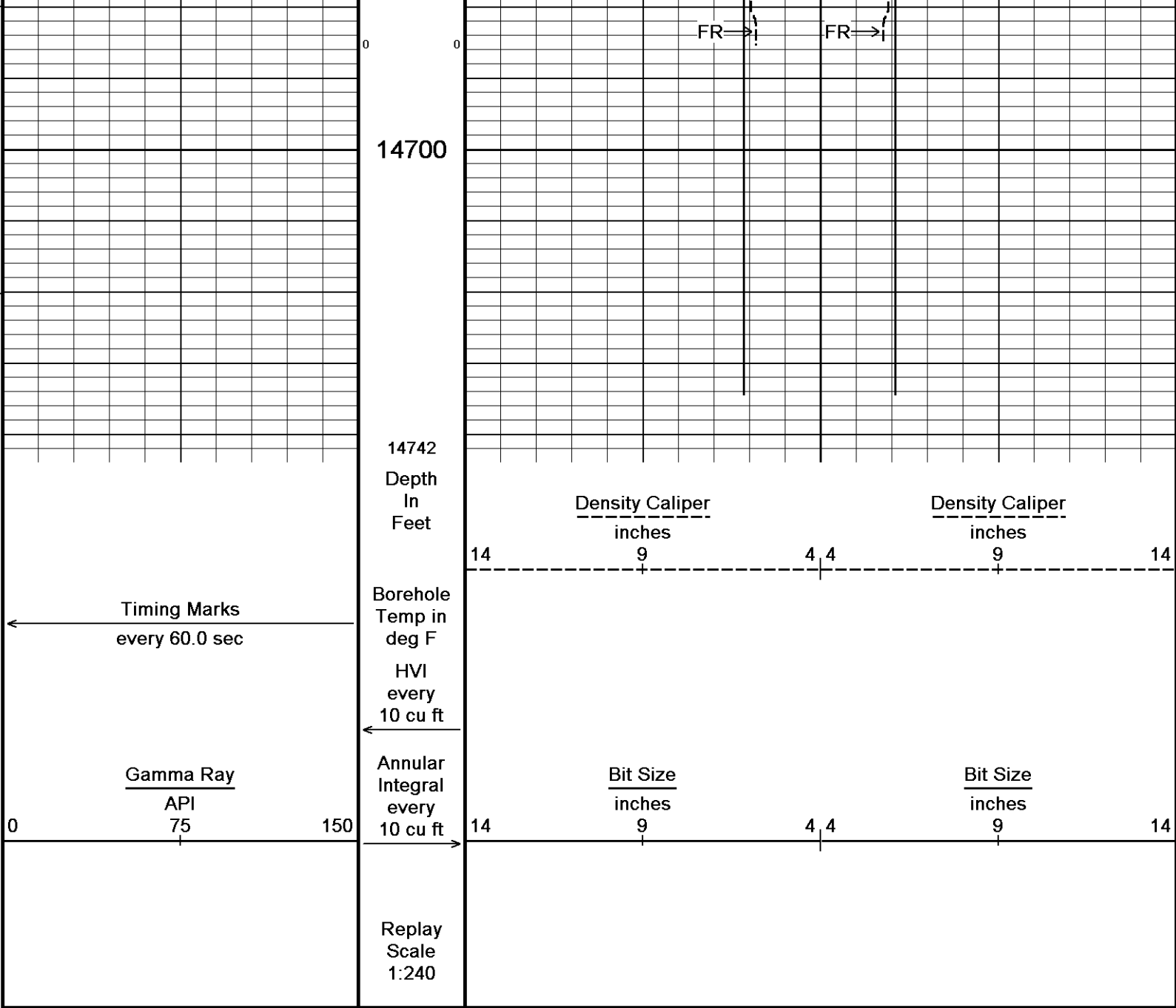
100
14200

249°









Depth Based Data - Maximum Sampling Increment 10.0cm
Filename: C:\DOCUME~1\BrunsHB1\LOCALS~1\Temp\Weatherford PreView\NPU 196-19B1_002.dta
System Versions: Logged with 10.08.1568 Processed with 10.08.1568 Plotted with 11.02.2119
Plotted on 05-NOV-2010 10:51
Recorded on 29-OCT-2010 10:50

↑ Depth Log ↑

| | | | | |
|-------------------------|-------------------------------|------|---------------|---------------|
| COMPANY | EXXON MOBIL CORPORATION | | | |
| WELL | NORTH PICEANCE CREEK 196-19B1 | | | |
| FIELD | PICEANCE CREEK | | | |
| PROVINCE/COUNTY | RIO BLANCO | | | |
| COUNTRY/STATE | U.S.A. / COLORADO | | | |
| Elevation Kelly Bushing | 6912.50 | feet | First Reading | 14685.00 feet |
| Elevation Drill Floor | 6911.50 | feet | Depth Driller | 14761.00 feet |
| Elevation Ground Level | 6882.50 | feet | Depth Logger | 14761.00 feet |

110411011014

200

