

# QUICKSILVER RESOURCES, INC.

## LOCATION LAYOUT FOR

WEBER #32-4

SECTION 4, T6N, R92W, 6th P.M.

2189' FNL 2094' FEL

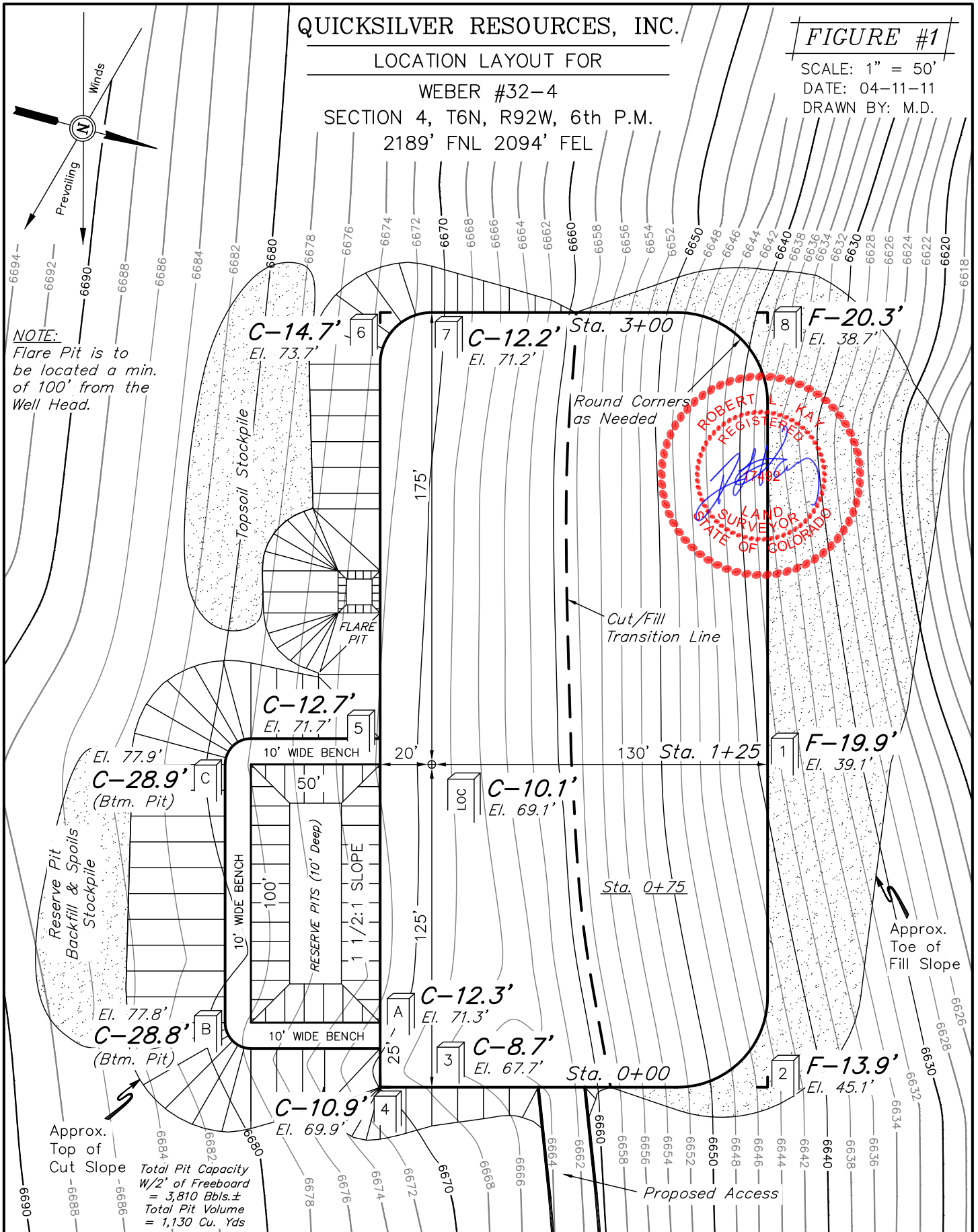
FIGURE #1

SCALE: 1" = 50'

DATE: 04-11-11

DRAWN BY: M.D.

NOTE:  
Flare Pit is to  
be located a min.  
of 100' from the  
Well Head.



Elev. Ungraded Ground At 22-24D Loc. Stake = 6669.1'  
FINISHED GRADE ELEV. AT 22-24D LOC. STAKE = 6659.0'

UINTAH ENGINEERING & LAND SURVEYING  
85 So. 200 East \* Vernal, Utah 84078 \* (435) 789-1017

# QUICKSILVER RESOURCES, INC.

## TYPICAL CROSS SECTIONS FOR

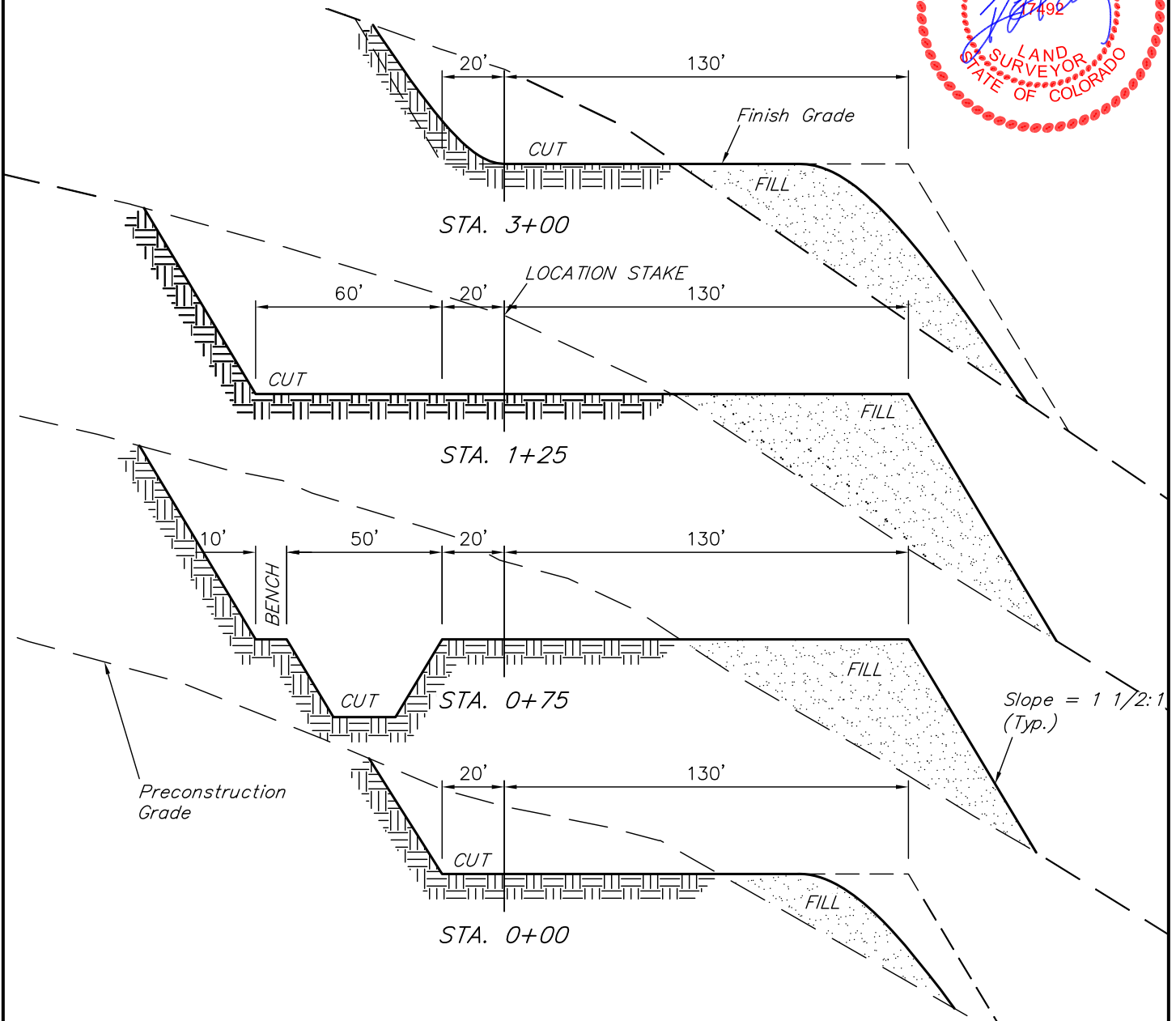
WEBER #32-4

SECTION 4, T6N, R92W, 6th P.M.

2189' FNL 2094' FEL

FIGURE #2

1" = 20'  
X-Section Scale  
1" = 50'  
DATE: 04-11-11  
DRAWN BY: M.D.



APPROXIMATE ACREAGES  
WELL SITE DISTURBANCE =  $\pm 2.164$  ACRES  
ROAD DISTURBANCE =  $\pm 0.782$  ACRES  
TOTAL =  $\pm 2.946$  ACRES

\* NOTE:  
FILL QUANTITY INCLUDES  
5% FOR COMPACTION

### APPROXIMATE YARDAGES

(6") Topsoil Stripping = 1,730 Cu. Yds.  
Remaining Location = 15,710 Cu. Yds.  
TOTAL CUT = 17,440 CU.YDS.  
FILL = 15,160 CU.YDS.

DEFICIT MATERIAL = 2,290 Cu. Yds.  
Topsoil & Pit Backfill = 2,290 Cu. Yds.  
(1/2 Pit Vol.)  
DEFICIT UNBALANCE = 0 Cu. Yds.  
(After Interim Rehabilitation)

UINTAH ENGINEERING & LAND SURVEYING  
85 So. 200 East \* Vernal, Utah 84078 \* (435) 789-1017

# QUICKSILVER RESOURCES, INC.

## TYPICAL RIG LAYOUT FOR

WEBER #32-4

SECTION 4, T6N, R92W, 6th P.M.

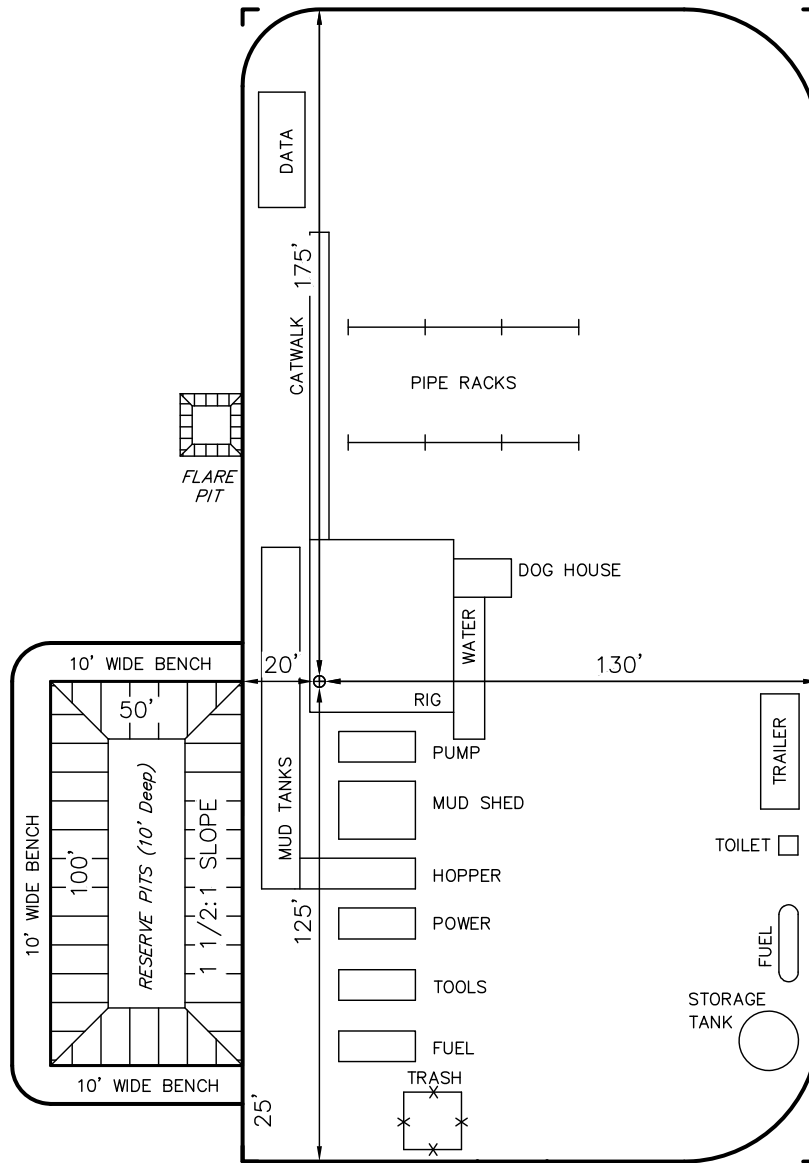
2189' FNL 2094' FEL

FIGURE #3

SCALE: 1" = 50'

DATE: 04-11-11

DRAWN BY: M.D.



Total Pit Capacity  
W/2' of Freeboard  
= 3,810 Bbls.±  
Total Pit Volume  
= 1,130 Cu. Yds

Proposed Access

UINTAH ENGINEERING & LAND SURVEYING  
85 So. 200 East \* Vernal, Utah 84078 \* (435) 789-1017