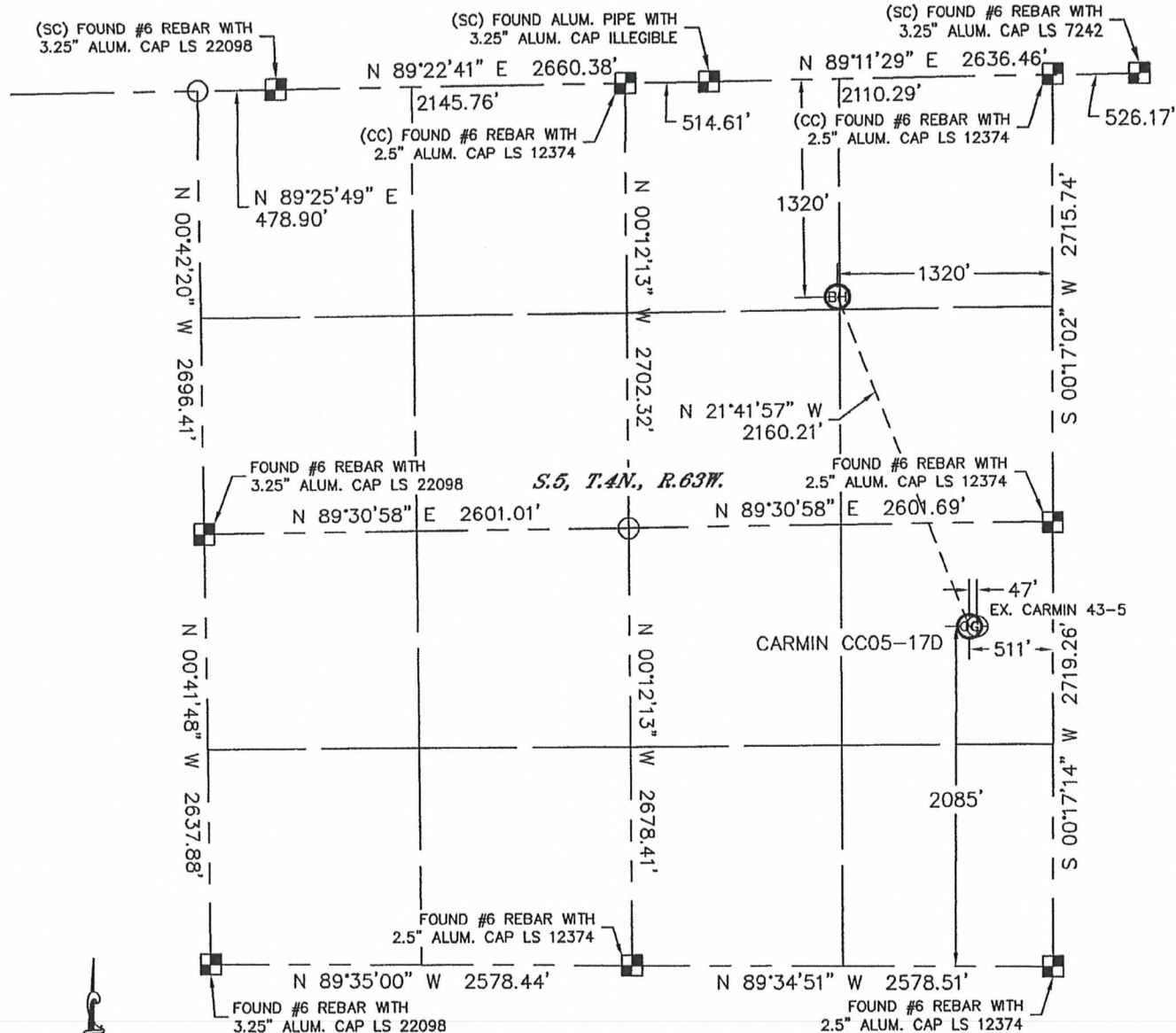


WELL LOCATION CERTIFICATE

SECTION: 5
TOWNSHIP: 4N
RANGE: 63W

THIS MAP DOES NOT REPRESENT A BOUNDARY SURVEY



In accordance with a request from Nate McCorkell with Noble Energy Inc. Lat40°, Inc. has determined the surface location of the CARMIN CC05-17D to be 2085' from the SOUTH line and 511' from the EAST line and the bottom hole to be 1320' from the NORTH line and 1320' from the EAST line as measured at right angles from the section lines of Section 5, Township 4 North, Range 63 West of the Sixth Principal Meridian, County of Weld, State of Colorado.

I hereby state that this Well Location Certificate was prepared by me, or under my direct supervision, that the fieldwork was completed on 3/5/11, for and on behalf of Noble Energy Inc. That this is not a Land Survey Plat or an Improvement Survey Plat, and that it is not to be relied upon for establishment of fence, building, or other future improvement lines.

NOTE:

- 1) Bearings shown are Grid Bearings of the Colorado State Plane Coordinate System, North Zone, North American Datum 1983/2007. The lineal dimensions as contained herein are based upon the "U.S. Survey Foot."
- 2) Ground elevations are based on an observed GPS elevation (NAVD 1988 DATUM).
- 3) NEAREST EXISTING WELL: CARMIN 43-5, 47'
- 4) IMPROVEMENTS: See LOCATION DRAWING for all visible improvements within 400' of disturbed area.
- 5) SURFACE USE: RANGELAND, EX. WELL PAD
- 6) INSTRUMENT OPERATOR: AARON LUND

SURFACE LOCATION

LATITUDE: 40.33952°N
LONGITUDE: 104.45430°W
PDOP: 1.3
ELEV: 4654'
1/4, 1/4: NE1/4SE1/4
NEAREST PROPERTY LINE: 511' EAST

BOTTOM HOLE

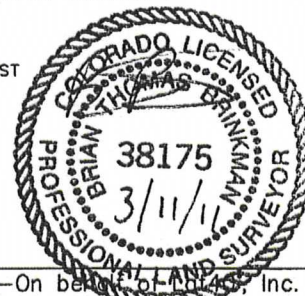
LATITUDE: 40.34506°N
LONGITUDE: 104.45708°W

NOTE

According to Colorado law, you must commence any legal action based upon any defect in this W.L.C. within three years after you discover such defect. In no event, may any action based upon any defect in this survey be commenced more than ten years after the date of the certificate shown hereon. (13-80-105 C.R.S.)

LEGEND

- = ALIQUOT MONUMENT AS DESCRIBED
- = CALCULATED POSITION



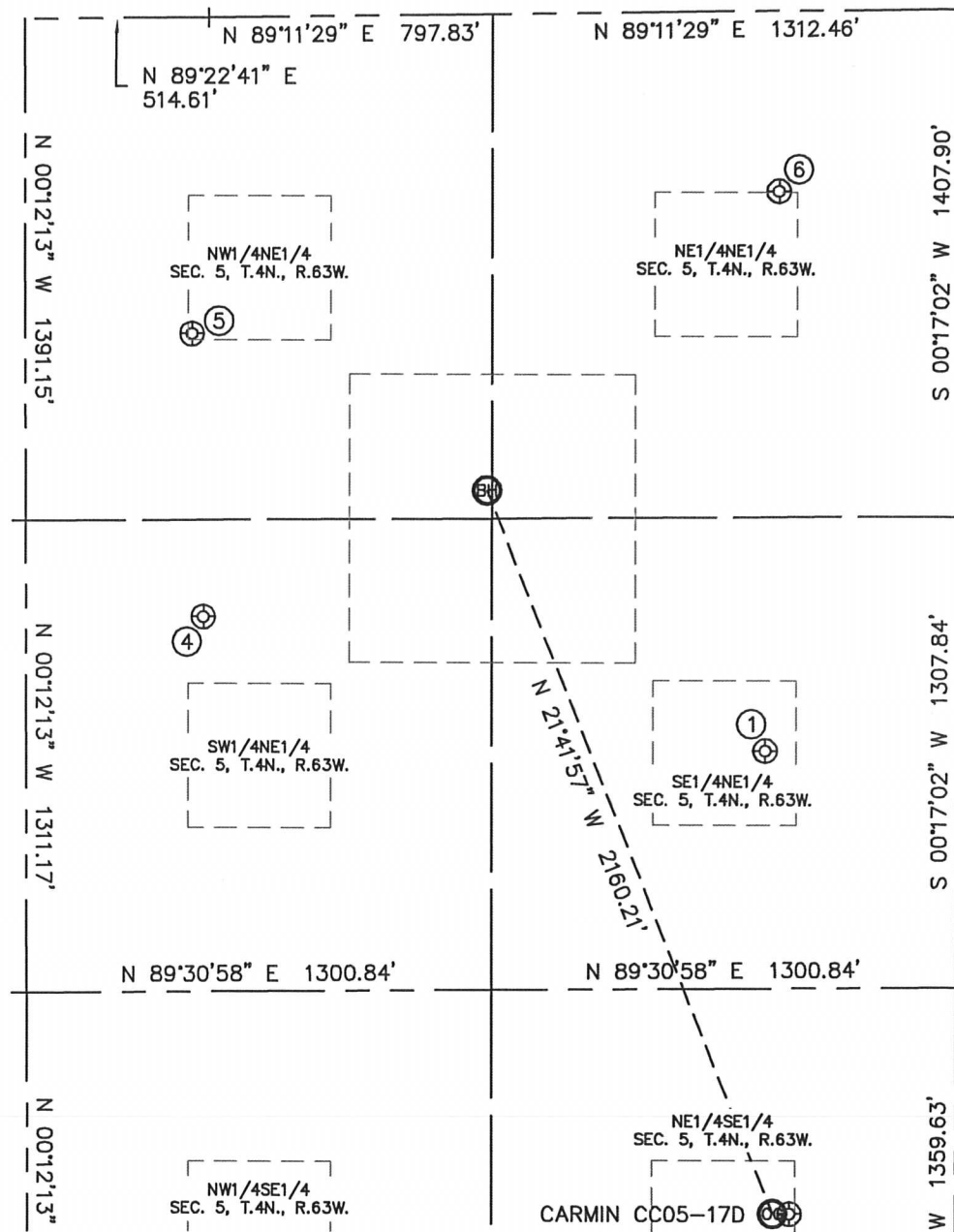
Brian T. Brinkman—On behalf of Lat40°, Inc.
Colorado Licensed Professional
Land Surveyor No. 38175

PROJECT#: 2011054

SITE SKETCH

CARMIN CC05-17D

SECTION: 5
TOWNSHIP: 4N
RANGE: 63W



①

BAKER 42-5
SE1/4NE1/4
2053' FNL
537' FEL
LAT-40.34305°N
LONG-104.45432°W
PDOP:1.6
ELEV:4624'

④

BAKER 32-5
SW1/4NE1/4
1662' FNL
2114' FEL
LAT-40.34411°N
LONG-104.45995°W
PDOP:1.1
ELEV:4626'

⑤

BAKER 31-5
NW1/4NE1/4
876' FNL
2151' FEL
LAT-40.34627°N
LONG-104.46004°W
PDOP:2.1
ELEV:4606'

⑥

BAKER 5-41
NE1/4NE1/4
501' FNL
506' FEL
LAT-40.34731°N
LONG-104.45411°W
PDOP:1.4
ELEV:4582'

