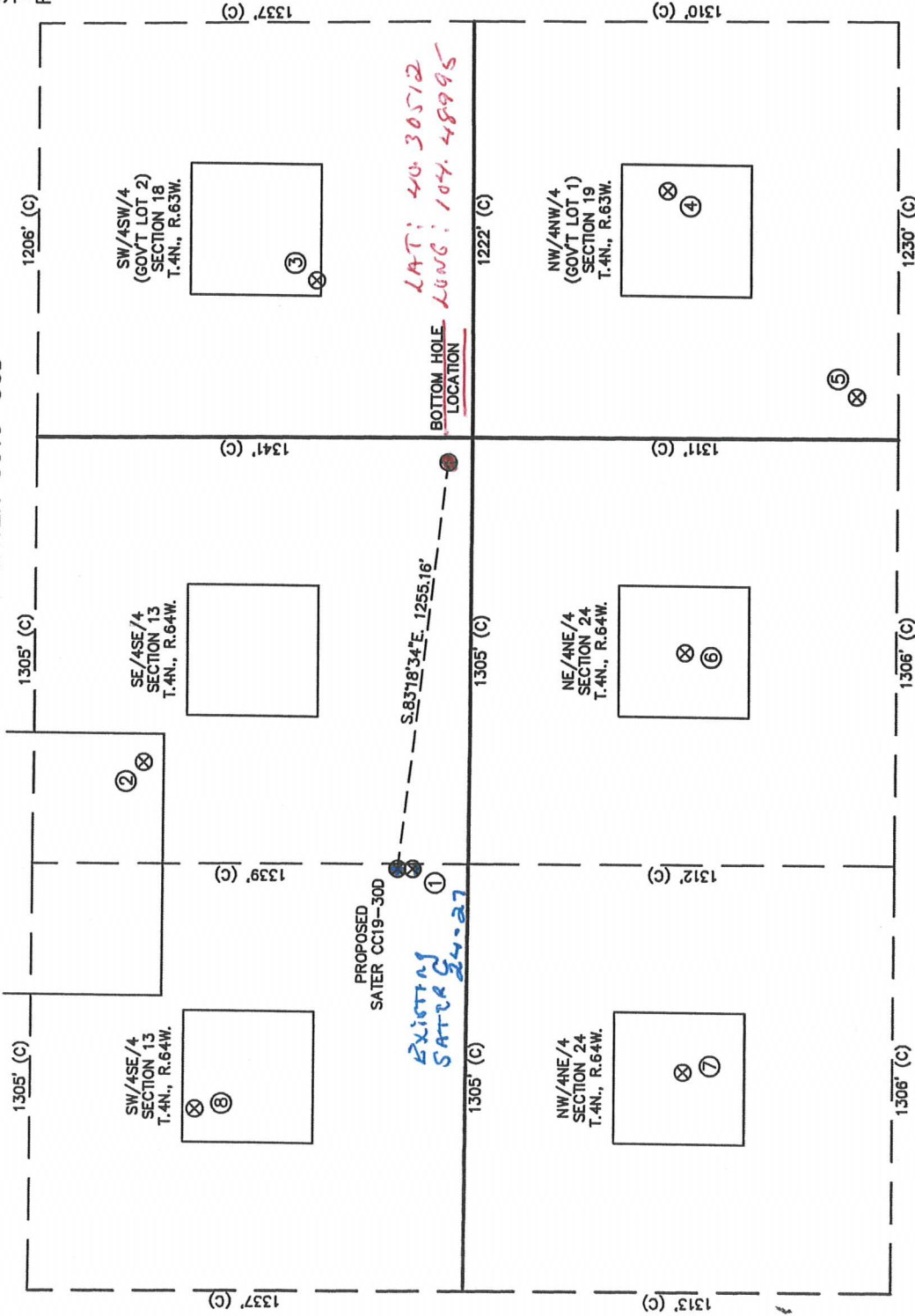


# Multi well plan

SATER CC19-30D

SECTION 13  
TOWNSHIP 4 NORTH  
RANGE 64 WEST



- ① SATER C24-27 SE/SE SEC. 13 T.4N., R.64W. 170' FSL EL 4862' N 40.30543 W 104.48442 PDOP 2.2
- ② UPV 13-1614 SE/SE SEC. 13 T.4N., R.64W. 1002' FSL EL 4864' N 40.30770 W 104.48325 PDOP 2.5
- ③ WATKINS 18-13 SW/SW SEC. 18 T.4N., R.63W. 484' FSL EL 4845' N 40.30623 W 104.48795 PDOP 2.4
- ④ SATER 11-19U NW/NW SEC. 19 T.4N., R.63W. 597' FSL EL 4874' N 40.30325 W 104.48698 PDOP 2.0
- ⑤ SATER 19F UNIOIL NW/NW SEC. 19 T.4N., R.63W. 1183' FSL EL 4886' N 40.30166 W 104.48923 PDOP 1.9
- ⑥ SPIKE STATE GWS C24-01 NE/NE SEC. 24 T.4N., R.64W. 659' FSL EL 4897' N 40.30313 W 104.49205 PDOP 2.2
- ⑦ SPIKE STATE GWS C24-02 NW/NE SEC. 24 T.4N., R.64W. 667' FSL EL 4886' N 40.30316 W 104.49664 PDOP 2.1
- ⑧ UPV 13-1514 SW/SE SEC. 13 T.4N., R.64W. 831' FSL EL 4853' N 40.30727 W 104.49705 PDOP 1.5



0 500

Scale: 1" = 500'

NOTES:

- 1) THIS SKETCH DOES NOT REPRESENT A BOUNDARY SURVEY.
- 2) THE DATUM FOR THE LATITUDES AND LONGITUDES ON THIS SKETCH IS NAD83.