
WILLIAMS PRODUCTION RMT INC EBUSINE

**KP 544-18
KOKOPELLI
Garfield County , Colorado**

Cement Surface Casing
16-Sep-2010

Post Job Report

The Road to Excellence Starts with Safety

Sold To #: 300721	Ship To #: 2806306	Quote #:	Sales Order #: 7563741
Customer: WILLIAMS PRODUCTION RMT INC EBUSINE	Customer Rep: Duniho, Al		
Well Name: KP	Well #: 544-18	API/UWI #: 05-045-19446	
Field: KOKOPELLI	City (SAP): SILT	County/Parish: Garfield	State: Colorado
Lat: N 39.522 deg. OR N 39 deg. 31 min. 19.776 secs.	Long: W 107.595 deg. OR W -108 deg. 24 min. 19.325 secs.		
Contractor: Cyclone Drilling	Rig/Platform Name/Num: Cyclone 30		
Job Purpose: Cement Surface Casing			
Well Type: Development Well	Job Type: Cement Surface Casing		
Sales Person: KOHL, KYLE	Srv Supervisor: KUKUS, CRAIG	MBU ID Emp #: 369124	

Job Personnel

HES Emp Name	Exp Hrs	Emp #	HES Emp Name	Exp Hrs	Emp #	HES Emp Name	Exp Hrs	Emp #
HAYES, JESSE Doug	7	403601	KUKUS, CRAIG A	7	369124	SIMINEO, JEROD M	7	479954
SLAUGHTER, JESSE Dean	7	454315	TRIPLETT, MICHEAL Anthony	7	447908			

Equipment

HES Unit #	Distance-1 way	HES Unit #	Distance-1 way	HES Unit #	Distance-1 way	HES Unit #	Distance-1 way
10001431	60 mile	10551730C	60 mile	10724643	60 mile	10804487	60 mile
10829469	60 mile						

Job Hours

Date	On Location Hours	Operating Hours	Date	On Location Hours	Operating Hours	Date	On Location Hours	Operating Hours
9/15/10	4.5		9/16/10	2.5	1.5			

TOTAL Total is the sum of each column separately

Job

Formation Name	Formation Depth (MD)	Top	Bottom	Form Type	Job depth MD	Water Depth	Perforation Depth (MD)	From	To
				BHST	1150. ft				
					Job Depth TVD	1150. ft			
					Wk Ht Above Floor	4. ft			

Job Times

Called Out	Date	Time	Time Zone
On Location	15 - Sep - 2010	16:00	MST
Job Started	15 - Sep - 2010	19:30	MST
Job Completed	16 - Sep - 2010	00:35	MST
Departed Loc	16 - Sep - 2010	01:22	MST
	16 - Sep - 2010	03:00	MST

Well Data

Description	New / Used	Max pressure psig	Size in	ID in	Weight lbm/ft	Thread	Grade	Top MD ft	Bottom MD ft	Top TVD ft	Bottom TVD ft
-------------	------------	-------------------	---------	-------	---------------	--------	-------	-----------	--------------	------------	---------------

Sales/Rental/3rd Party (HES)

Description	Qty	Qty uom	Depth	Supplier
PLUG,CMTG,TOP,9 5/8,HWE,8.16 MIN/9.06 MA	1	EA		
R/A DENSOMETER W/CHART RECORDER,/JOB,ZI	1	JOB		
PORT. DAS W/CEMWIN;ACQUIRE W/HES, ZI	1	JOB		
ADC (AUTO DENSITY CTRL) SYS, /JOB,ZI	1	JOB		

Tools and Accessories

Type	Size	Qty	Make	Depth	Type	Size	Qty	Make	Depth	Type	Size	Qty	Make
Guide Shoe					Packer					Top Plug	9 5/8	1	HES
Float Shoe					Bridge Plug					Bottom Plug			
Float Collar					Retainer					SSR plug set			
Insert Float										Plug Container	9 5/8	1	HES
Stage Tool										Centralizers			

Miscellaneous Materials

Gelling Agt	Conc	Surfactant	Conc	Acid Type	Qty	Conc	%
Treatment Fld	Conc	Inhibitor	Conc	Sand Type	Size	Qty	

Fluid Data

Stage/Plug #: 1

Fluid #	Stage Type	Fluid Name	Qty	Qty uom	Mixing Density lbm/gal	Yield ft ³ /sk	Mix Fluid Gal/sk	Rate bbl/min	Total Mix Fluid Gal/sk
1	Water Spacer		20.00	bbl	8.4	.0	.0	.0	
2	VersaCem Lead Cement	VERSACEM (TM) SYSTEM (452010)	180.0	sacks	12.3	2.38	13.75		13.75
	13.75 Gal	FRESH WATER							
3	VersaCem Tail Cement	VERSACEM (TM) SYSTEM (452010)	160.0	sacks	12.8	2.11	11.75		11.75
	11.75 Gal	FRESH WATER							
4	Displacement Fluid		85.8	bbl	8.4	.0	.0	.0	
Calculated Values		Pressures		Volumes					
Displacement	85.8	Shut In: Instant		Lost Returns	0	Cement Slurry		Pad	
Top Of Cement	SURFACE	5 Min		Cement Returns	20	Actual Displacement	85.8	Treatment	
Frac Gradient		15 Min		Spacers	20	Load and Breakdown		Total Job	243
Rates									
Circulating		Mixing	8	Displacement	10	Avg. Job			8
Cement Left In Pipe	Amount	44.30 ft	Reason	Shoe Joint					
Frac Ring # 1 @	ID		Frac ring # 2 @	ID		Frac Ring # 3 @	ID		Frac Ring # 4 @
The Information Stated Herein Is Correct				Customer Representative Signature					

The Road to Excellence Starts with Safety

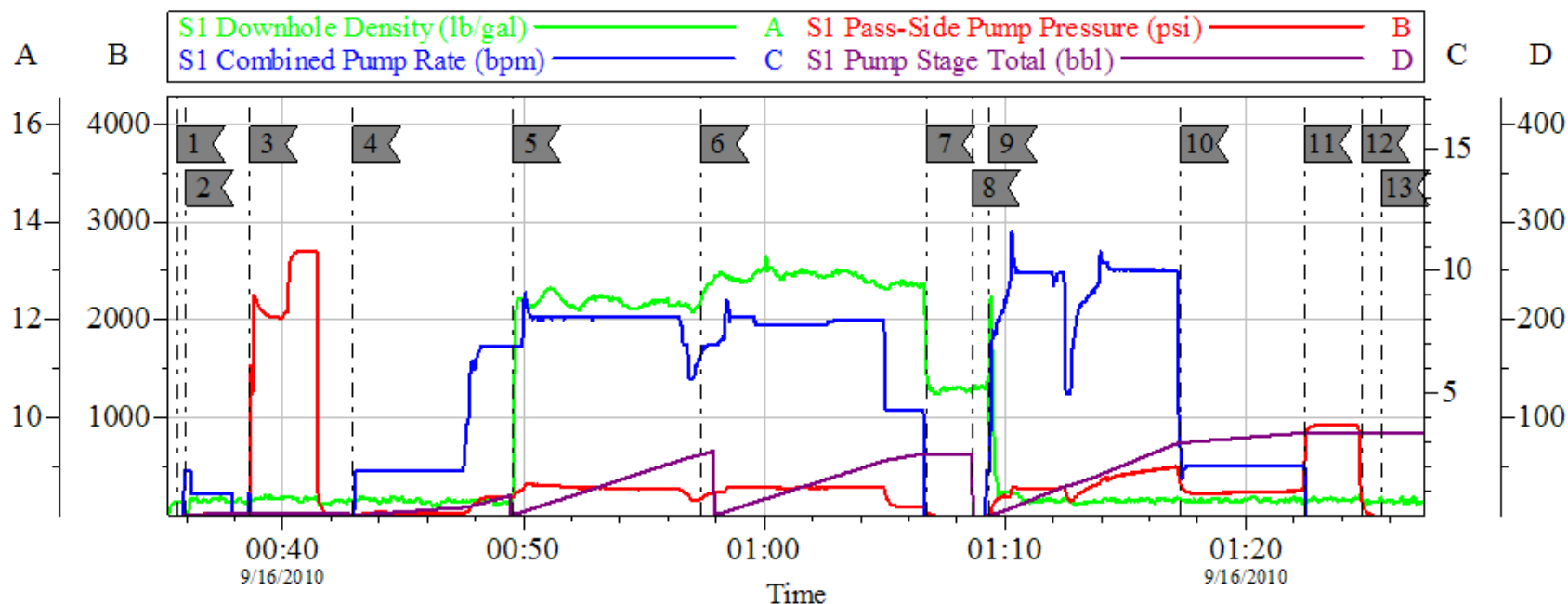
Sold To #: 300721	Ship To #: 2806306	Quote #:	Sales Order #: 7563741
Customer: WILLIAMS PRODUCTION RMT INC EBUSINE		Customer Rep: Dunihoo, Al	
Well Name: KP	Well #: 544-18	API/UWI #: 05-045-19446	
Field: KOKOPELLI	City (SAP): SILT	County/Parish: Garfield	State: Colorado
Legal Description:			
Lat: N 39.522 deg. OR N 39 deg. 31 min. 19.776 secs.		Long: W 107.595 deg. OR W -108 deg. 24 min. 19.325 secs.	
Contractor: Cyclone Drilling		Rig/Platform Name/Num: Cyclone 30	
Job Purpose: Cement Surface Casing			Ticket Amount:
Well Type: Development Well		Job Type: Cement Surface Casing	
Sales Person: KOHL, KYLE		Srv Supervisor: KUKUS, CRAIG	MBU ID Emp #: 369124

Activity Description	Date/Time	Cht #	Rate bbl/min	Volume bbl		Pressure psig		Comments
				Stage	Total	Tubing	Casing	
Call Out	09/15/2010 16:00							
Depart Yard Safety Meeting	09/15/2010 17:15							SAFETY MEETING INVOLVING THE ENTIRE CMT CREW
Arrive At Loc	09/15/2010 19:30							RIG WAS PULLING DRILL PIPE
Assessment Of Location Safety Meeting	09/15/2010 19:40							ASSESSMENT OF LOCATION INVOLVING THE ENTIRE CMT CREW
Pre-Rig Up Safety Meeting	09/15/2010 23:30							SAFETY MEETING INVOLVING THE ENTIRE CMT CREW
Circulate Well	09/15/2010 23:30							RIG CIRCULATED 45 MINS
Rig-Up Equipment	09/15/2010 23:45							
Pre-Job Safety Meeting	09/16/2010 00:15							SAFETY MEETING INVOLVING EVERYONE ON LOCATION
Start Job	09/16/2010 00:35							TP:1135 TD:1150 SJ:44.30 MUD: 9.3 #/GAL OH: 13 1/2 CASING: 9 5/8 32.3#
Other	09/16/2010 00:35		2	2			33.0	FILL LINES
Pressure Test	09/16/2010 00:38		0.5			2500.0		PRESSURE TEST GOOD
Pump Spacer 1	09/16/2010 00:42		7	20			202.0	FRESH WATER SPACER
Pump Lead Cement	09/16/2010 00:49		8	76.4			330.0	180 SACKS, 12.3 #/GAL, 2.38 FT3/SACK, 13.75 GAL/SACK

Cementing Job Log

Activity Description	Date/Time	Cht #	Rate bbl/ min	Volume bbl		Pressure psig		Comments
				Stage	Total	Tubing	Casing	
Pump Tail Cement	09/16/2010 00:57		8	60.1			305.0	160 SACKS, 12.8 #/GAL, 2.11 FT3/SACK, 11.75 GAL/SACK
Shutdown	09/16/2010 01:06							
Drop Top Plug	09/16/2010 01:08							PLUG LEFT THE PLUG CONTAINER
Pump Displacement	09/16/2010 01:09		10	85.8			469.0	PUMP FRESH WATER
Slow Rate	09/16/2010 01:17		2	75.8			250.0	
Bump Plug	09/16/2010 01:22		2	85.8			930.0	PLUG LANDED
Check Floats	09/16/2010 01:24							FLOATS HELD/GOT 1/2BBL BACK TO TANKS
End Job	09/16/2010 01:25							
Pre-Rig Down Safety Meeting	09/16/2010 01:35							SAFETY MEETING INVOLVING THE ENTIRE CMT CREW
Rig-Down Equipment	09/16/2010 01:50							
Safety Meeting - Departing Location	09/16/2010 02:45							SAFETY MEETING INVOLVING THE ENTIRE CMT CREW
Comment	09/16/2010 03:00							THANK YOU FOR USING HALLIBURTON, CRAIG KUKUS AND CREW

WILLIAMS SURFACE 9 5/8



Local Event Log

1	START JOB	00:35:38	2	PRIME LINES	00:35:59
3	TEST LINES	00:38:38	4	PUMP H2O SPACER	00:42:56
5	PUMP LEAD CMT	00:49:34	6	PUMP TAIL CMT	00:57:22
7	SHUT DOWN	01:06:46	8	DROP PLUG	01:08:39
9	PUMP H2O DISPLACEMENT	01:09:22	10	SLOW RATE	01:17:19
11	BUMP PLUG	01:22:26	12	CHECK FLOATS	01:24:49
13	END JOB	01:25:39			

Customer: WILLIAMS
Well Description: KP 544-18
Company Rep: AL DUNIHO

Job Date: 16-Sep-2010
Job Type: SURFACE
Cement Supervisor: CRAIG KUKUS

Sales Order #: 7563741
ADC Used: YES
Elite #/Operator: #2 JESSE HAYES

OptiCem v6.4.8
16-Sep-10 01:47