
CHEVRON - MID-CONTINENT EBIZ

**MB Larson D3X26
RANGELY
Rio Blanco County , Colorado**

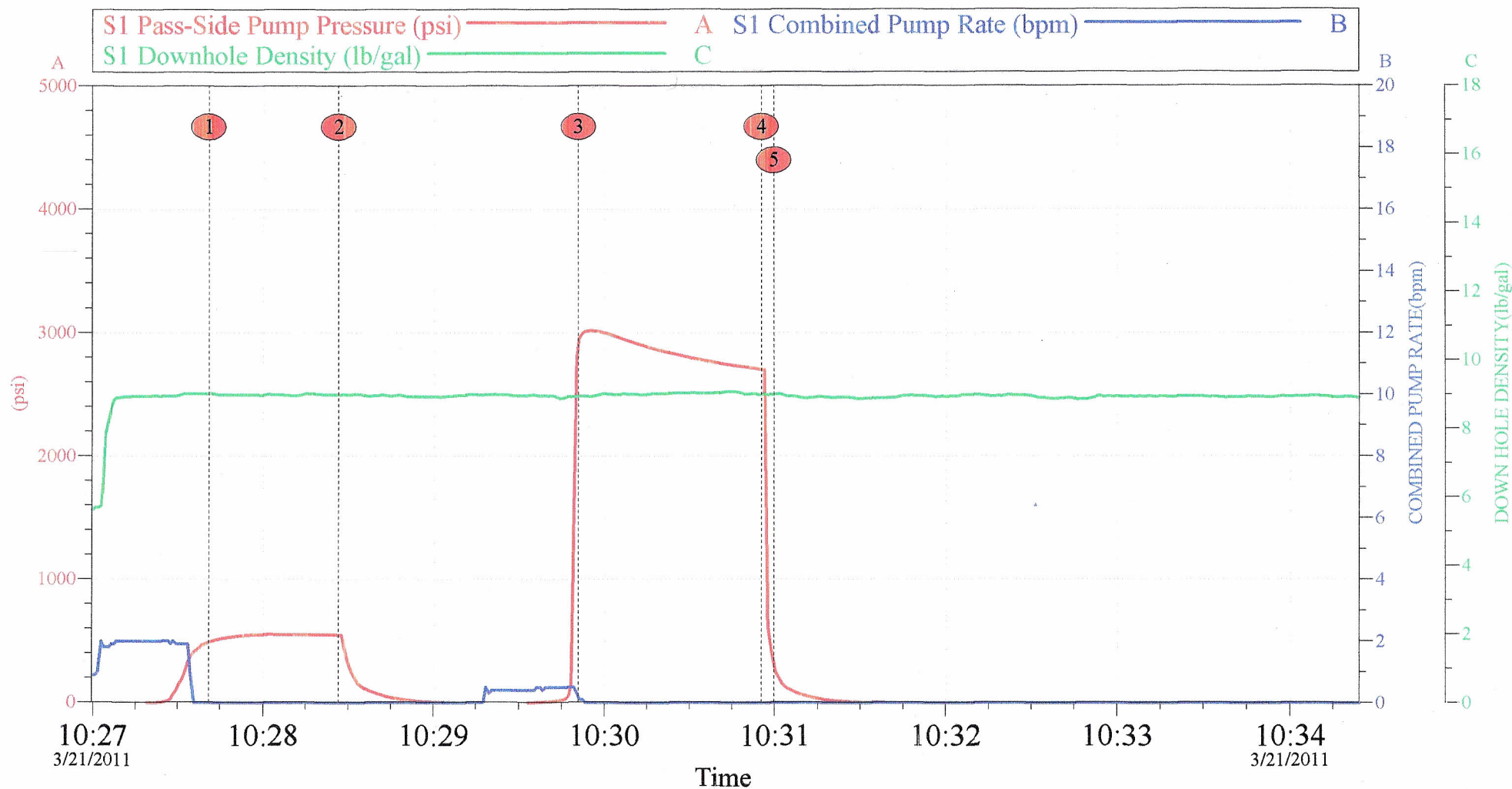
Squeeze Perfs
21-Mar-2011

Job Site Documents

Cheveron MB Larson D3X26

Re-Cement

3/21/2011



Local Event Log					
1	Fill lines	10:27:41	2	Shut down	10:28:27
3	Test to 3000 psi	10:29:51	4	Hold test	10:30:55
5	Bleed off pressure	10:31:00			

Customer:	Job Date:	Sales Order #:
Well Description:	21-Mar-2011	8047734
SUP	AZTEC 777	
	OPERATER	SVC LEADER

Cementing Job Log

		#	Stage	Total	Tubing	Casing	
Pump Lead Cement	03/21/2011 10:56		2	146.5		870.0	PUMP 189.8 BBLS OF LEAD CEMENT MIXED AT 12.5 PPG. 440 SKS 1.87 YIELD, 10.17 GAL/SK
Cement Returns to Surface	03/21/2011 11:05			18		890.0	GOOD CEMENT TO SURFACE
Pump Tail Cement	03/21/2011 11:55		2.5	24.6		820.0	PUMP 24.6 BBLS TAIL CEMENT MIXED AT 15.8 PPG 120 SKS 1.15 YIELD 4.97 GAL/SK
Pump Displacement	03/21/2011 12:05		2.5	12		800.0	PUMP 20 BBLS OF WATER
Slow Rate	03/21/2011 12:09		1.8	16		1000. 0	SLOW RATE TO 1.8 BPM FOR PRESSURE
Slow Rate	03/21/2011 12:12		1.5	18		1100. 0	SLOW RATE TO 1.5 BPM FOR PRESSURE
Shutdown	03/21/2011 12:14			20		1000. 0	SHUT DOWN TO STING OUT
Reverse Circ Well	03/21/2011 12:16		2	4		600.0	PUMP 30 BBLS FRESH WATER TO CLEAN TUBING
Shutdown	03/21/2011 12:26			30		1000. 0	SHUT DOWN
Clean Lines	03/21/2011 12:30						WASH PUMPS AND LINES TO THE PIT
Pre-Rig Down Safety Meeting	03/21/2011 12:40						DISCUSS ALL HAZARDS ASSOCIATED WITH RIGGING DOWN EQUIPMENT
Rig-Down Equipment	03/21/2011 12:50						RIG DOWN
Pre-Convoy Safety Meeting	03/21/2011 14:50						DISCUSS ALL OVER THE ROAD HAZARDS AND ROUTES TO NEXT DESTINATION
Crew Leave Location	03/21/2011 15:00						THANK YOU FOR YOUR BUSNISS

The Road to Excellence Starts with Safety

Sold To #: 338668	Ship To #: 2844000	Quote #:	Sales Order #: 8047734
Customer: CHEVRON - MID-CONTINENT EBIZ	Customer Rep:		
Well Name: MB Larson	Well #: D3X26	API/UWI #:	
Field: RANGELY	City (SAP): RANGELY	County/Parish: Rio Blanco	State: Colorado
Contractor: WORKOVER	Rig/Platform Name/Num: Workover		
Job Purpose: Squeeze Perfs			
Well Type: Producing Well	Job Type: Squeeze Perfs		
Sales Person: SCHROEDER, BRYCE	Srv Supervisor: FUCHS, BENJAMIN	MBU ID Emp #: 470584	

Job Personnel

HES Emp Name	Exp Hrs	Emp #	HES Emp Name	Exp Hrs	Emp #	HES Emp Name	Exp Hrs	Emp #
BEREECE, TERRY Lee	5	222819	BROWN, DALLAS S.G.	5	479707	FUCHS, BENJAMIN Reinhard	5	470584
LAWTON, SCOTT O	5	482816	VOORHIS, WALTER T	5	472268			

Equipment

HES Unit #	Distance-1 way	HES Unit #	Distance-1 way	HES Unit #	Distance-1 way	HES Unit #	Distance-1 way
10616259	mile	11071474	mile	11263210	mile	11307428	mile
11338215	mile	11360879	mile	11512092	mile		

Job Hours

Date	On Location Hours	Operating Hours	Date	On Location Hours	Operating Hours	Date	On Location Hours	Operating Hours
3/21/2011	5							

TOTAL Total is the sum of each column separately

Job

Job Times

Formation Name	Formation Depth (MD)	Top	Bottom	Called Out	Date	Time	Time Zone
Form Type			BHST	On Location	21 - Mar - 2011	07:45	MST
Job depth MD	3714. ft		Job Depth TVD	Job Started	21 - Mar - 2011	10:30	MST
Water Depth			Wk Ht Above Floor	Job Completed	21 - Mar - 2011	12:30	MST
Perforation Depth (MD)	From 3,714.00 ft	To 3,725.00 ft	Departed Loc	21 - Mar - 2011	15:00	MST	

Well Data

Description	New / Used	Max pressure psig	Size in	ID in	Weight lbm/ft	Thread	Grade	Top MD ft	Bottom MD ft	Top TVD ft	Bottom TVD ft
Squeeze Interval								3714.	3725.		
9 in Open Hole				9.				1000.	4000.		
Production Casing	Unknown		7.	6.366	23.		J-55		4000.		
Retainer	Unknown		7.	6.366	23.		J-55	3600.	3601.		
Surface Casing	Unknown		10.75	10.05	40.5		J-55		1000.		
Tubing	Unknown		2.875	2.441	6.5		J-55		3950.		

Sales/Rental/3rd Party (HES)

Description	Qty	Qty uom	Depth	Supplier
SUGAR - GRANULATED	20	LB		

Tools and Accessories

Type	Size	Qty	Make	Depth	Type	Size	Qty	Make	Depth	Type	Size	Qty	Make
Guide Shoe					Packer					Top Plug			
Float Shoe					Bridge Plug					Bottom Plug			
Float Collar					Retainer					SSR plug set			
Insert Float										Plug Container			
Stage Tool										Centralizers			

Miscellaneous Materials

Gelling Agt		Conc		Surfactant		Conc		Acid Type		Qty		Conc	%
Treatment Fld		Conc		Inhibitor		Conc		Sand Type		Size		Qty	

Fluid Data									
Stage/Plug #: 1									
Fluid #	Stage Type	Fluid Name	Qty	Qty uom	Mixing Density lbm/gal	Yield ft ³ /sk	Mix Fluid Gal/sk	Rate bbl/min	Total Mix Fluid Gal/sk
1	Establish Injection Test		20	bbl	8.33	.0	.0	5.0	
2	SqueezeCem Lead	SQUEEZECEM (TM) SYSTEM (452971)	440	sacks	12.5	1.87	10.17	5.0	10.17
	0.2 %	ECONOLITE (100001580)							
	0.3 %	HALAD(R)-344, 50 LB (100003670)							
	0.3 %	HALAD(R)-413, 50 LB (100003738)							
	0.3 %	VERSASET, 55 LB SK (101376573)							
	10.17 Gal	FRESH WATER							
3	SqueezeCem Tail	SQUEEZECEM (TM) SYSTEM (452971)	120	sacks	15.8	1.15	4.97	2.0	4.97
	0.3 %	HALAD(R)-344, 50 LB (100003670)							
	4.968 Gal	FRESH WATER							
4	Fresh Water Displacement		21.0	bbl	8.33	.0	.0	3.0	

Calculated Values		Pressures		Volumes			
Displacement		Shut In: Instant		Lost Returns		Cement Slurry	Pad
Top Of Cement		5 Min		Cement Returns		Actual Displacement	Treatment
Frac Gradient		15 Min		Spacers		Load and Breakdown	Total Job

Rates							
Circulating		Mixing		Displacement		Avg. Job	
Cement Left In Pipe	Amount	0 ft	Reason	Shoe Joint			
Frac Ring # 1 @	ID		Frac ring # 2 @	ID		Frac Ring # 3 @	ID

The Information Stated Herein Is Correct	Customer Representative Signature
--	-----------------------------------

The Road to Excellence Starts with Safety

Sold To #: 338668	Ship To #: 2844000	Quote #:	Sales Order #: 8047734
Customer: CHEVRON - MID-CONTINENT EBIZ		Customer Rep:	
Well Name: MB Larson	Well #: D3X26	API/UWI #:	
Field: RANGELY	City (SAP): RANGELY	County/Parish: Rio Blanco	State: Colorado
Legal Description:			
Lat:		Long:	
Contractor: WORKOVER		Rig/Platform Name/Num: Workover	
Job Purpose: Squeeze Perfs		Ticket Amount:	
Well Type: Producing Well		Job Type: Squeeze Perfs	
Sales Person: SCHROEDER, BRYCE		Srvs Supervisor: FUCHS, BENJAMIN	MBU ID Emp #: 470584

Activity Description	Date/Time	Cht #	Rate bbl/min	Volume bbl		Pressure psig		Comments
				Stage	Total	Tubing	Casing	
Call Out	03/21/2011 03:00							CREW CALLED FOR SERVICES
Depart Yard Safety Meeting	03/21/2011 05:45							DICUSS ALL ROUTES AND OVER THE ROAD HAZARDS
Crew Leave Yard	03/21/2011 06:00							DEPART FOR LOCATION
Arrive at Location from Service Center	03/21/2011 07:45							RIG RUNNING CASEING UPON ARRIVAL
Assessment Of Location Safety Meeting	03/21/2011 08:00							ASSESS ALL POSSIBLE HAZARDS ON LOCATION
Pre-Rig Up Safety Meeting	03/21/2011 08:30							DISCUSS ALL RIG UP PROCEDURES AND HAZARDS OF LOCATION IN WORK AREA
Rig-Up Equipment	03/21/2011 08:45							RIG UP
Pre-Job Safety Meeting	03/21/2011 10:20							INCLUDE ALL PERSONEL ON LOCATION FOR PRE JOB JOB SAFETY MEETING. DISCUSS ALL SAFETY ISSUES AND JOB PROCEDURES WITH ALLPERSONEL
Test Lines	03/21/2011 10:30		1		2		3000.0	TEST LINES TO 3000 PSI
Pump Spacer	03/21/2011 10:49		2		20		630.0	PUMP 20 BBL OF FRESH WATER SPACER
Activity Description	Date/Time	Cht	Rate bbl/min	Volume bbl		Pressure psig		Comments

Sold To # : 338668

Ship To # :2844000

Quote # :

Sales Order # :

8047734

SUMMIT Version: 7.20.130

Monday, March 21, 2011 01:48:00