

T4N, R90W, 6th. P.M.

SWEPI LP

SE Cor. Sec. 31
1914 Brass Cap,
0.7' Below Ground
Lat: 40.334256°
Long: 107.526817°

32

33

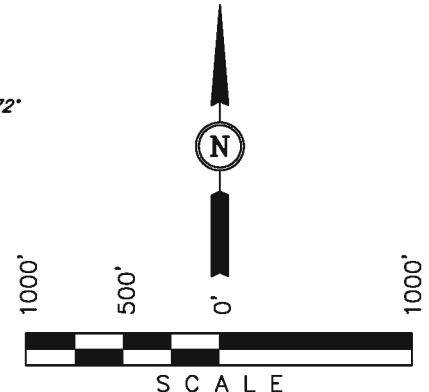
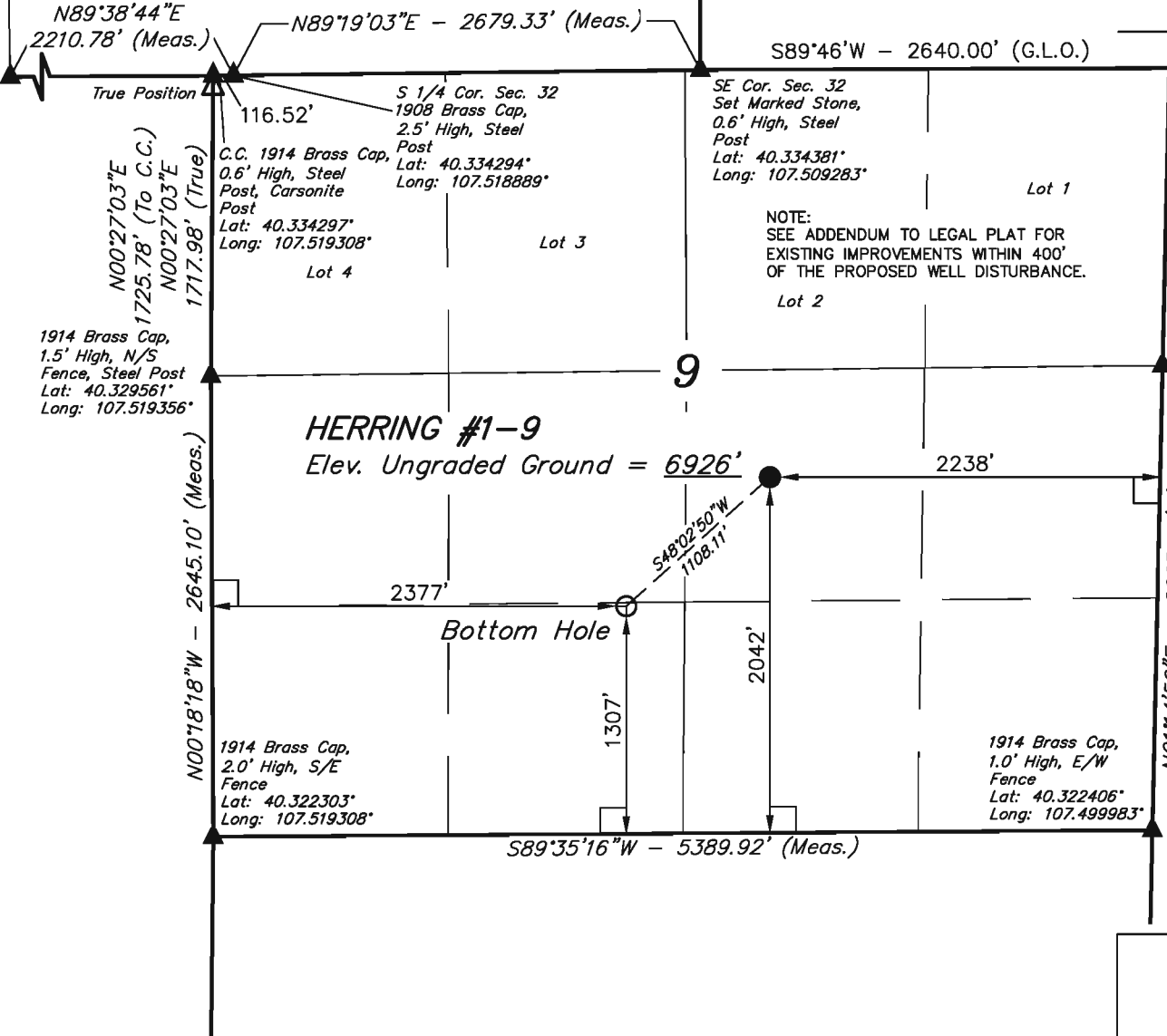
Well location, HERRING #1-9, located as shown in the NW 1/4 SE 1/4 of Section 9, T4N, R90W, 6th. P.M., Moffat County, Colorado.

BASIS OF ELEVATION

SPOT ELEVATION AT THE NORTHEAST CORNER OF SECTION 31, T5N, R90W, 6th P.M. TAKEN FROM THE PAGODA QUADRANGLE, COLORADO, MOFFAT COUNTY, 7.5 MINUTE SERIES (TOPOGRAPHICAL MAP) PUBLISHED BY THE UNITED STATES DEPARTMENT OF THE INTERIOR, GEOLOGICAL SURVEY. SAID ELEVATION IS MARKED AS BEING 6664 FEET.

BASIS OF BEARINGS

BASIS OF BEARINGS IS A G.P.S. OBSERVATION.



CERTIFICATE

THIS IS TO CERTIFY THAT THE ABOVE PLAT WAS PREPARED FROM FIELD NOTES OF ACTUAL SURVEYS MADE BY ME OR UNDER MY SUPERVISION AND THAT THE SAME ARE TRUE AND CORRECT TO THE BEST OF MY KNOWLEDGE AND BELIEF.

[Signature]
REGISTERED LAND SURVEYOR
REGISTRATION NO. 17492
STATE OF COLORADO

UINTAH ENGINEERING & LAND SURVEYING
85 SOUTH 200 EAST - VERNAL, UTAH 84078
(435) 789-1017

- LEGEND:**
- └─┘ = 90° SYMBOL
 - = PROPOSED WELL HEAD.
 - ▲ = SECTION CORNERS LOCATED.

PDOP = 2.5

NAD 83 (BOTTOM HOLE)	NAD 83 (SURFACE LOCATION)
LATITUDE = 40°19'33.34" (40.325928)	LATITUDE = 40°19'40.65" (40.327958)
LONGITUDE = 107°30'38.88" (107.510800)	LONGITUDE = 107°30'28.24" (107.507844)
NAD 27 (BOTTOM HOLE)	NAD 27 (SURFACE LOCATION)
LATITUDE = 40°19'33.43" (40.325953)	LATITUDE = 40°19'40.74" (40.327983)
LONGITUDE = 107°30'36.66" (107.510183)	LONGITUDE = 107°30'26.02" (107.507228)

SCALE 1" = 1000'	DATE SURVEYED: 03-01-11	DATE DRAWN: 04-11-11
PARTY B.H. J.H. J.I.	REFERENCES G.L.O. PLAT	
WEATHER COOL	FILE SWEPI LP	

T4N, R90W, 6th. P.M.

SWEPI LP

SE Cor. Sec. 31
1914 Brass Cap,
0.7' Below Ground
Lat: 40.334256°
Long: 107.526817°

32

33

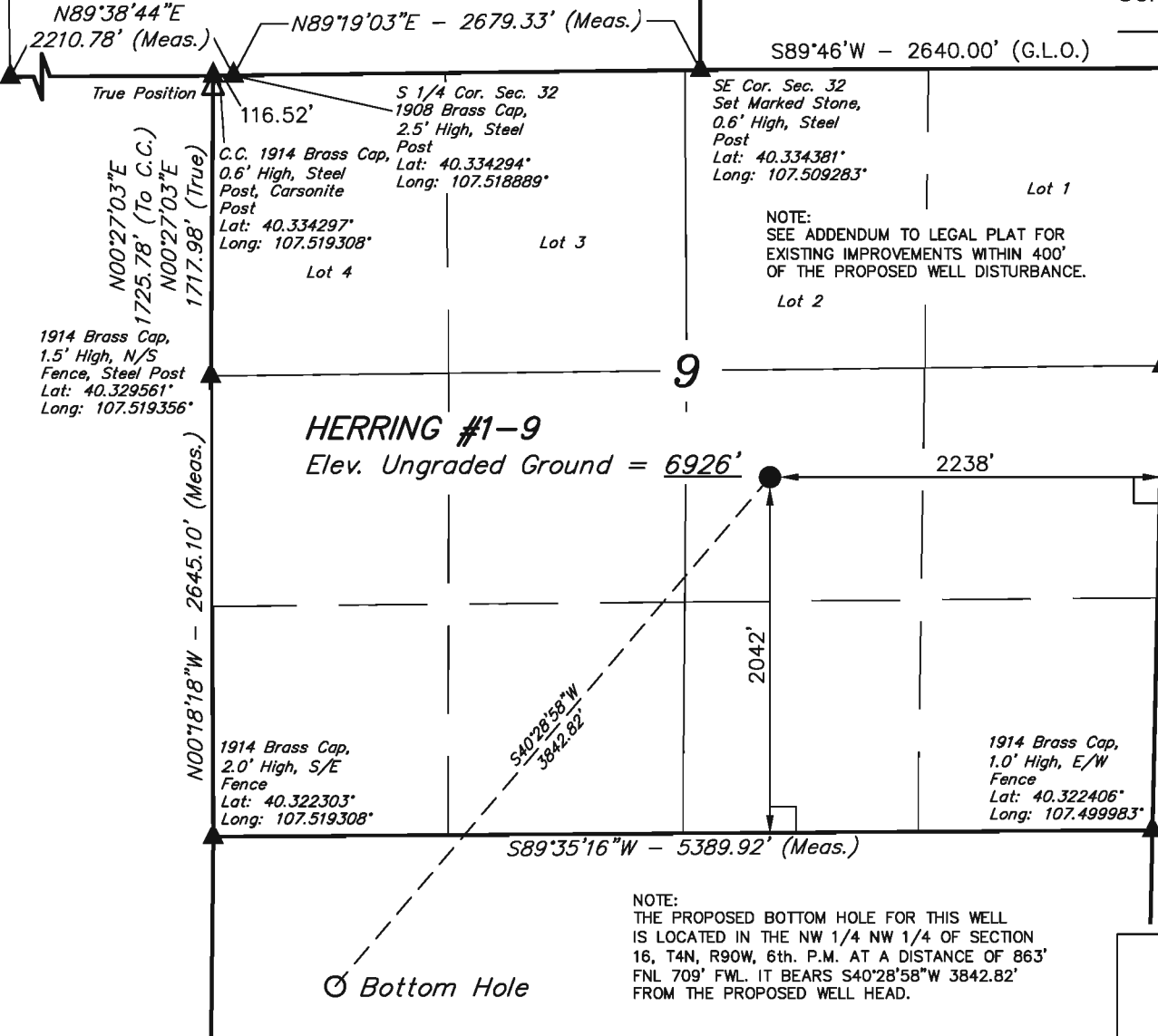
Well location, HERRING #1-9, (SURFACE LOCATION)
located as shown in the NW 1/4 SE 1/4 of
Section 9, T4N, R90W, 6th. P.M., Moffat County,
Colorado.

BASIS OF ELEVATION

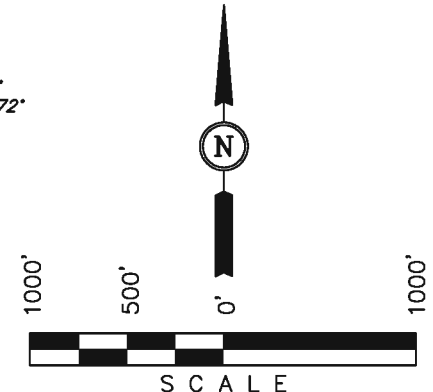
SPOT ELEVATION AT THE NORTHEAST CORNER OF
SECTION 31, T5N, R90W, 6th P.M. TAKEN FROM THE
PAGODA QUADRANGLE, COLORADO, MOFFAT COUNTY,
7.5 MINUTE SERIES (TOPOGRAPHICAL MAP) PUBLISHED
BY THE UNITED STATES DEPARTMENT OF THE
INTERIOR, GEOLOGICAL SURVEY. SAID ELEVATION IS
MARKED AS BEING 6664 FEET.

BASIS OF BEARINGS

BASIS OF BEARINGS IS A G.P.S. OBSERVATION.



N01°20'E
1685.64' (G.L.O.)
N01°14'50"E - 2667.98' (Meas.)



CERTIFICATE

THIS IS TO CERTIFY THAT THE ABOVE PLAT WAS PREPARED FROM
FIELD NOTES OF ACTUAL SURVEYS MADE BY ME OR UNDER MY
SUPERVISION AND THAT THE SAME ARE TRUE AND CORRECT TO THE
BEST OF MY KNOWLEDGE AND BELIEF.

Robert L. ...
REGISTERED LAND SURVEYOR
REGISTRATION NO. 17492
STATE OF COLORADO

NOTE:
THE PROPOSED BOTTOM HOLE FOR THIS WELL
IS LOCATED IN THE NW 1/4 NW 1/4 OF SECTION
16, T4N, R90W, 6th. P.M. AT A DISTANCE OF 863'
FNL 709' FWL. IT BEARS S40°28'58"W 3842.82'
FROM THE PROPOSED WELL HEAD.

UINTAH ENGINEERING & LAND SURVEYING
85 SOUTH 200 EAST - VERNAL, UTAH 84078
(435) 789-1017

LEGEND:
└─┘ = 90° SYMBOL
● = PROPOSED WELL HEAD.
▲ = SECTION CORNERS LOCATED.

PDOP = 2.5

NAD 83 (SURFACE LOCATION)	
LATITUDE = 40°19'40.65" (40.327958)	
LONGITUDE = 107°30'28.24" (107.507844)	
NAD 27 (SURFACE LOCATION)	
LATITUDE = 40°19'40.74" (40.327983)	
LONGITUDE = 107°30'26.02" (107.507288)	

SCALE 1" = 1000'	DATE SURVEYED: 03-01-11	DATE DRAWN: 03-03-11
PARTY B.H. J.H. J.I.	REFERENCES G.L.O. PLAT	
WEATHER COOL	FILE SWEPI LP	

T4N, R90W, 6th. P.M.

SWEPI LP

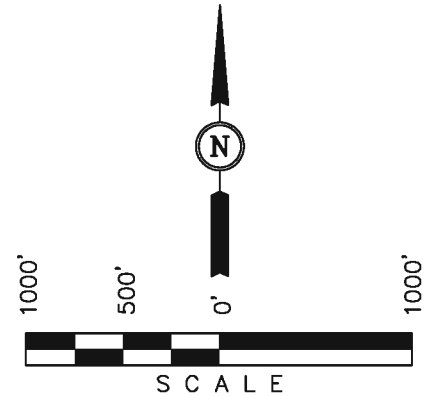
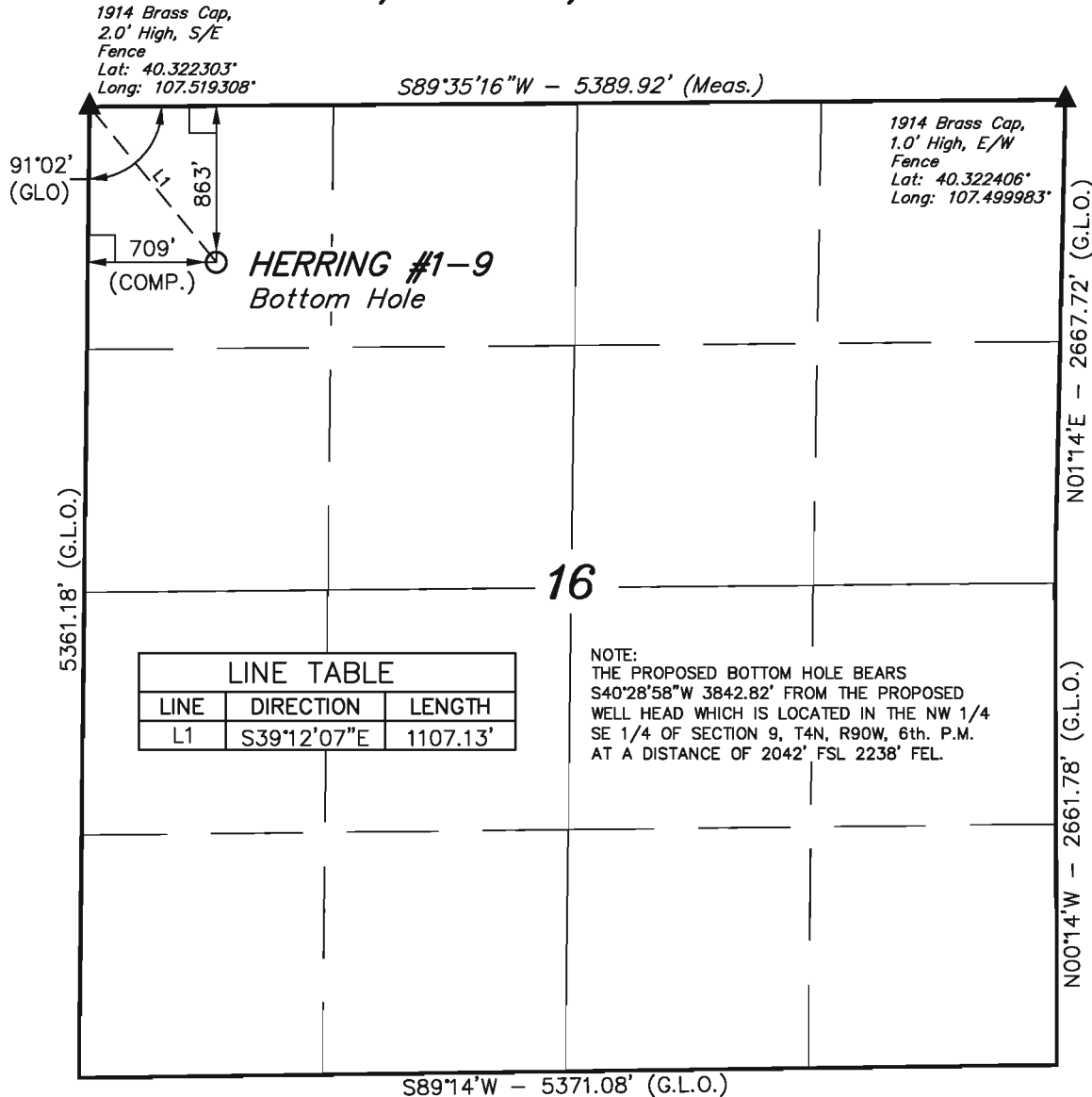
Well location, HERRING #1-9, (BOTTOM HOLE) located as shown in the NW 1/4 NW 1/4 of Section 16, T4N, R90W, 6th. P.M., Moffat County, Colorado.

BASIS OF ELEVATION

SPOT ELEVATION AT THE NORTHEAST CORNER OF SECTION 31, T5N, R90W, 6th P.M. TAKEN FROM THE PAGODA QUADRANGLE, COLORADO, MOFFAT COUNTY, 7.5 MINUTE SERIES (TOPOGRAPHICAL MAP) PUBLISHED BY THE UNITED STATES DEPARTMENT OF THE INTERIOR, GEOLOGICAL SURVEY. SAID ELEVATION IS MARKED AS BEING 6664 FEET.

BASIS OF BEARINGS

BASIS OF BEARINGS IS A G.P.S. OBSERVATION.



CERTIFICATE

THIS IS TO CERTIFY THAT THE ABOVE PLAT WAS PREPARED FROM FIELD NOTES OF ACTUAL SURVEYS MADE BY ME OR UNDER MY SUPERVISION AND THAT THE SAME ARE TRUE AND CORRECT TO THE BEST OF MY KNOWLEDGE AND BELIEF.

Robert L. Link
 REGISTERED LAND SURVEYOR
 REGISTRATION NO. 17492
 STATE OF COLORADO

UINTAH ENGINEERING & LAND SURVEYING
 85 SOUTH 200 EAST - VERNAL, UTAH 84078
 (435) 789-1017

LEGEND:

- └─┘ = 90° SYMBOL
- = PROPOSED WELL HEAD.
- ▲ = SECTION CORNERS LOCATED.

PDOP = 2.5

NAD 83 (TARGET BOTTOM HOLE)
LATITUDE = 40°19'11.78" (40.319939)
LONGITUDE = 107°31'00.44" (107.516789)
NAD 27 (TARGET BOTTOM HOLE)
LATITUDE = 40°19'11.87" (40.319964)
LONGITUDE = 107°30'58.21" (107.516169)

SCALE 1" = 1000'	DATE SURVEYED: 03-01-11	DATE DRAWN: 03-03-11
PARTY B.H. J.H. J.I.	REFERENCES G.L.O. PLAT	
WEATHER COOL	FILE SWEPI LP	

T4N, R90W, 6th. P.M.

SWEPI LP

Well location, HERRING #2-9, located as shown in the NW 1/4 SE 1/4 of Section 9, T4N, R90W, 6th. P.M., Moffat County, Colorado.

SE Cor. Sec. 31
1914 Brass Cap,
0.7' Below Ground
Lat: 40.334256°
Long: 107.526817°

32

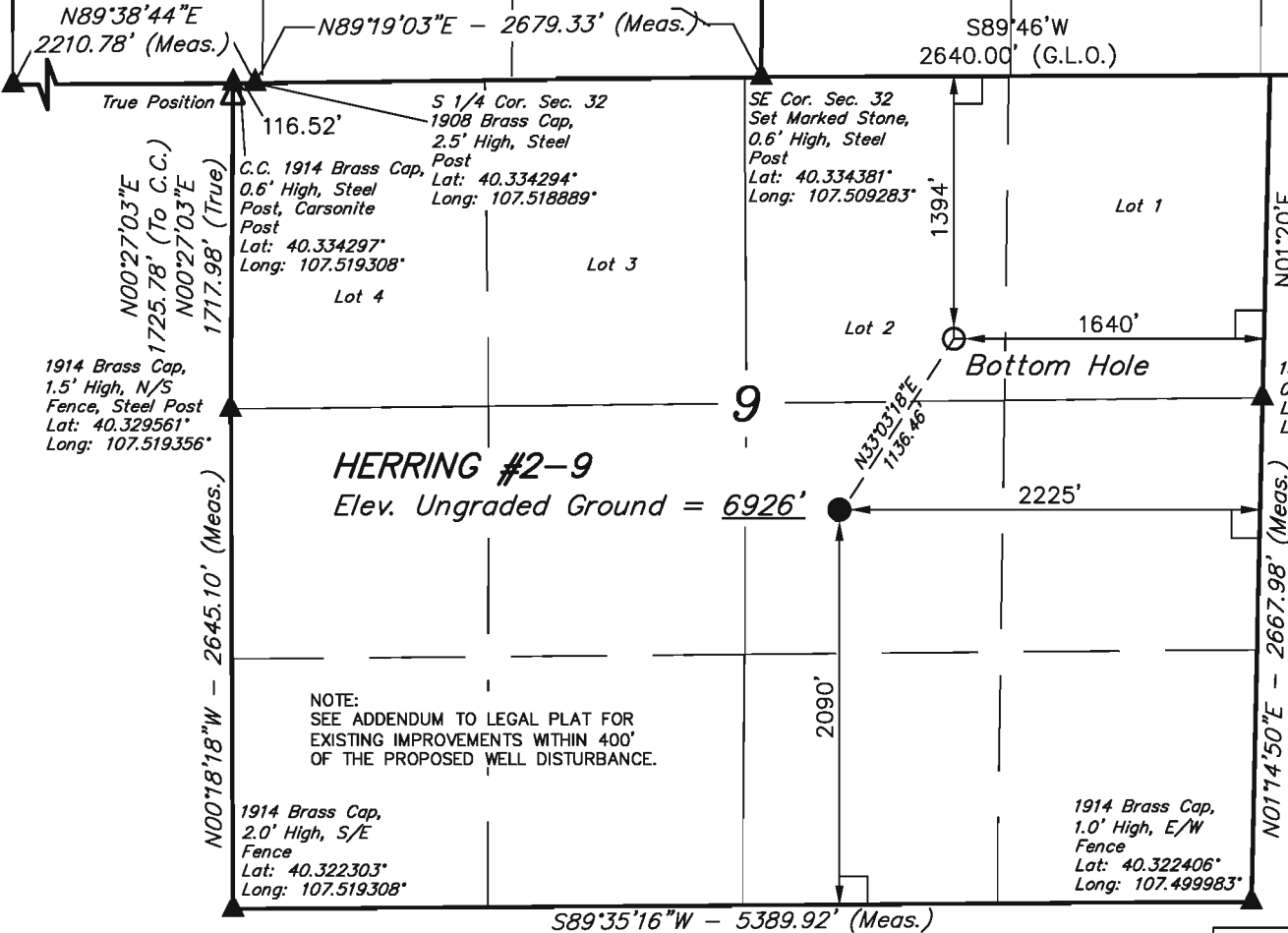
33

BASIS OF ELEVATION

SPOT ELEVATION AT THE NORTHEAST CORNER OF SECTION 31, T5N, R90W, 6th P.M. TAKEN FROM THE PAGODA QUADRANGLE, COLORADO, MOFFAT COUNTY, 7.5 MINUTE SERIES (TOPOGRAPHICAL MAP) PUBLISHED BY THE UNITED STATES DEPARTMENT OF THE INTERIOR, GEOLOGICAL SURVEY. SAID ELEVATION IS MARKED AS BEING 6664 FEET.

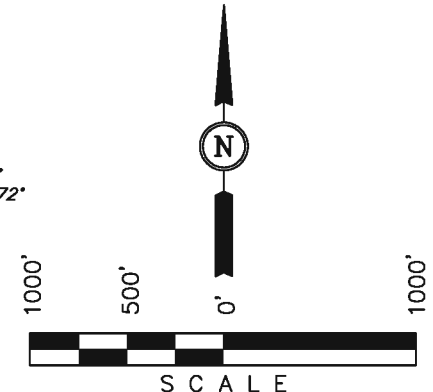
BASIS OF BEARINGS

BASIS OF BEARINGS IS A G.P.S. OBSERVATION.



N01°20'E
1685.64' (G.L.O.)

N01°14'50"E - 2667.98' (Meas.)



CERTIFICATE

THIS IS TO CERTIFY THAT THE ABOVE PLAT WAS PREPARED FROM FIELD NOTES OF ACTUAL SURVEYS MADE BY ME OR UNDER MY SUPERVISION AND THAT THE SAME ARE TRUE AND CORRECT TO THE BEST OF MY KNOWLEDGE AND BELIEF.

Robert L. ...
REGISTERED LAND SURVEYOR
REGISTRATION NO. 17492
STATE OF COLORADO

- LEGEND:**
- └─┘ = 90° SYMBOL
 - = PROPOSED WELL HEAD.
 - ▲ = SECTION CORNERS LOCATED.

PDOP = 2.5	
NAD 83 (BOTTOM HOLE)	NAD 83 (SURFACE LOCATION)
LATITUDE = 40°19'50.06" (40.330572)	LATITUDE = 40°19'41.13" (40.328092)
LONGITUDE = 107°30'20.23" (107.505619)	LONGITUDE = 107°30'28.06" (107.507794)
NAD 27 (BOTTOM HOLE)	NAD 27 (SURFACE LOCATION)
LATITUDE = 40°19'50.15" (40.330597)	LATITUDE = 40°19'41.22" (40.328117)
LONGITUDE = 107°30'18.01" (107.505003)	LONGITUDE = 107°30'25.84" (107.507178)

UINTAH ENGINEERING & LAND SURVEYING
85 SOUTH 200 EAST - VERNAL, UTAH 84078
(435) 789-1017

SCALE 1" = 1000'	DATE SURVEYED: 03-01-11	DATE DRAWN: 04-11-11
PARTY B.H. J.H. J.I.	REFERENCES G.L.O. PLAT	
WEATHER COOL	FILE SWEPI LP	

T4N, R90W, 6th. P.M.

SWEPI LP

SE Cor. Sec. 31
1914 Brass Cap,
0.7' Below Ground
Lat: 40.334256°
Long: 107.526817°

32

33

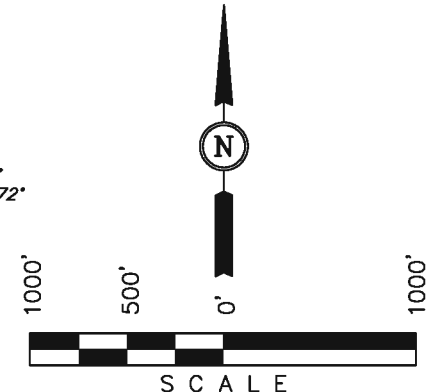
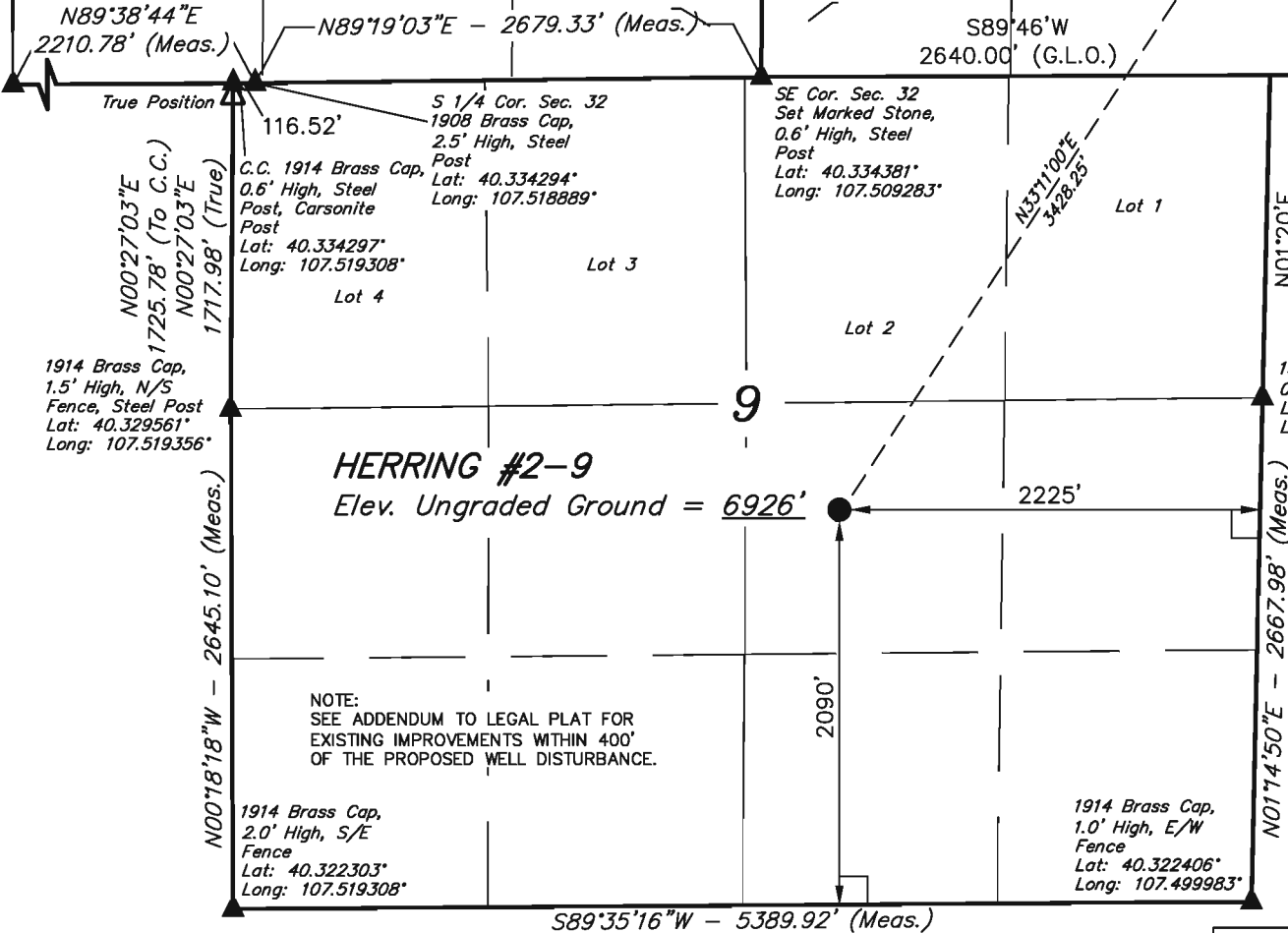
Well location, HERRING #2-9, (SURFACE LOCATION)
located as shown in the NW 1/4 SE 1/4 of
Section 9, T4N, R90W, 6th. P.M., Moffat County,
Colorado.

BASIS OF ELEVATION

SPOT ELEVATION AT THE NORTHEAST CORNER OF
SECTION 31, T5N, R90W, 6th P.M. TAKEN FROM THE
PAGODA QUADRANGLE, COLORADO, MOFFAT COUNTY,
7.5 MINUTE SERIES (TOPOGRAPHICAL MAP) PUBLISHED
BY THE UNITED STATES DEPARTMENT OF THE
INTERIOR, GEOLOGICAL SURVEY. SAID ELEVATION IS
MARKED AS BEING 6664 FEET.

BASIS OF BEARINGS

BASIS OF BEARINGS IS A G.P.S. OBSERVATION.



CERTIFICATE

THIS IS TO CERTIFY THAT THE ABOVE PLAT WAS PREPARED FROM
FIELD NOTES OF ACTUAL SURVEYS MADE BY ME OR UNDER MY
SUPERVISION AND THAT THE SAME ARE TRUE AND CORRECT TO THE
BEST OF MY KNOWLEDGE AND BELIEF.

Robert L. Link
REGISTERED LAND SURVEYOR
REGISTRATION NO. 17492
STATE OF COLORADO

NOTE:
SEE ADDENDUM TO LEGAL PLAT FOR
EXISTING IMPROVEMENTS WITHIN 400'
OF THE PROPOSED WELL DISTURBANCE.

NOTE:
THE PROPOSED BOTTOM HOLE FOR THIS WELL
IS LOCATED IN THE SE 1/4 SW 1/4 OF SECTION
33, T5N, R90W, 6th. P.M. AT A DISTANCE OF 524'
FSL 2273' FWL. IT BEARS N33°11'00"E 3428.25'
FROM THE PROPOSED WELL HEAD.

- LEGEND:**
- └─┘ = 90° SYMBOL
 - = PROPOSED WELL HEAD.
 - ▲ = SECTION CORNERS LOCATED.

PDOP = 2.5

NAD 83 (SURFACE LOCATION)	
LATITUDE	= 40°19'41.13" (40.328092)
LONGITUDE	= 107°30'28.06" (107.507794)
NAD 27 (SURFACE LOCATION)	
LATITUDE	= 40°19'41.22" (40.328117)
LONGITUDE	= 107°30'25.84" (107.507178)

UNTAH ENGINEERING & LAND SURVEYING		
85 SOUTH 200 EAST - VERNAL, UTAH 84078		
(435) 789-1017		
SCALE 1" = 1000'	DATE SURVEYED: 03-01-11	DATE DRAWN: 04-11-11
PARTY B.H. J.H. J.I.	REFERENCES G.L.O. PLAT	
WEATHER COOL	FILE SWEPI LP	

T5N, R90W, 6th. P.M.

SWEPI LP

Well location, HERRING #2-9, located as shown in the SE 1/4 SW 1/4 of Section 33, T5N, R90W, 6th. P.M., Moffat County, Colorado.

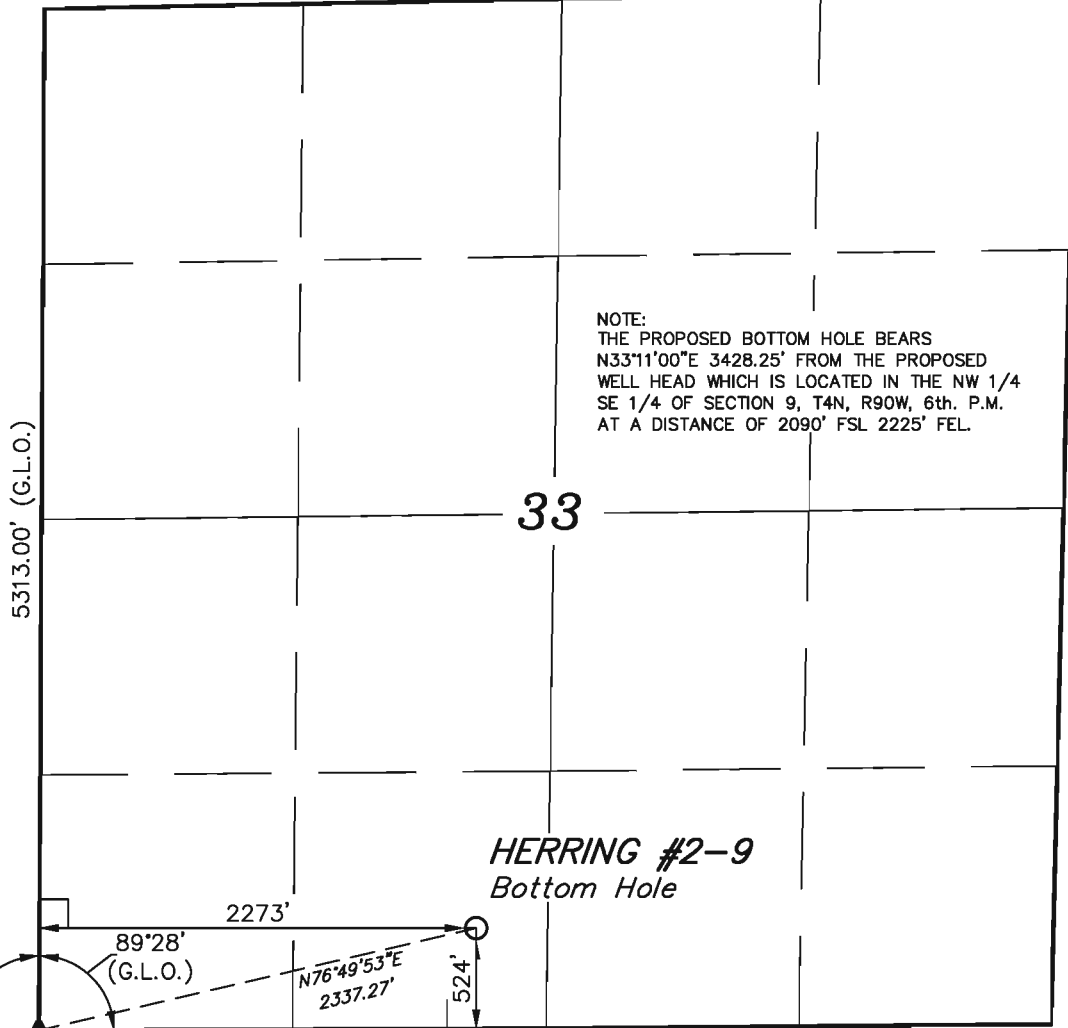
N88°51'E - 5387.58' (G.L.O.)

BASIS OF ELEVATION

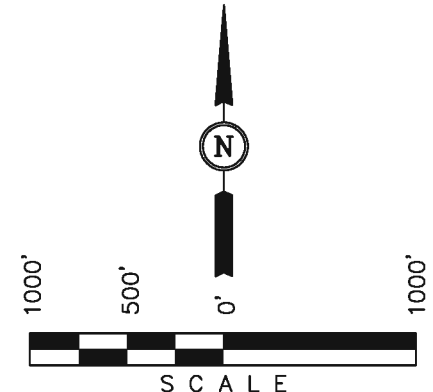
SPOT ELEVATION AT THE NORTHEAST CORNER OF SECTION 31, T5N, R90W, 6th P.M. TAKEN FROM THE PAGODA QUADRANGLE, COLORADO, MOFFAT COUNTY, 7.5 MINUTE SERIES (TOPOGRAPHICAL MAP) PUBLISHED BY THE UNITED STATES DEPARTMENT OF THE INTERIOR, GEOLOGICAL SURVEY. SAID ELEVATION IS MARKED AS BEING 6664 FEET.

BASIS OF BEARINGS

BASIS OF BEARINGS IS A G.P.S. OBSERVATION.



N01°22'E - 5372.40' (G.L.O.)



CERTIFICATE

THIS IS TO CERTIFY THAT THE ABOVE PLAT WAS PREPARED FROM FIELD NOTES OF ACTUAL SURVEYS MADE BY ME OR UNDER MY SUPERVISION AND THAT THE SAME ARE TRUE AND CORRECT TO THE BEST OF MY KNOWLEDGE AND BELIEF.

John L. ...
 REGISTERED LAND SURVEYOR
 REGISTRATION NO. 17492
 STATE OF COLORADO

S 1/4 Cor. Sec. 32
 1908 Brass Cap,
 2.5' High, Steel
 Post
 Lat: 40.334294°
 Long: 107.518889°

HERRING #2-9
 Bottom Hole

91° (G.L.O.)
 89°28' (G.L.O.)
 N76°49'53"E
 2337.27'
 524'
 2273'
 T5N
 T4N
 N89°19'03"E
 2679.33' (Meas.)
 SE Cor. Sec. 32
 Set Marked Stone,
 0.6' High, Steel
 Post
 Lat: 40.334381°
 Long: 107.509283°
 2640.00' (G.L.O.)

N89°30'E - 2628.78' (G.L.O.)

UINTAH ENGINEERING & LAND SURVEYING
 85 SOUTH 200 EAST - VERNAL, UTAH 84078
 (435) 789-1017

- LEGEND:
- └─┘ = 90° SYMBOL
 - = PROPOSED WELL HEAD.
 - ▲ = SECTION CORNERS LOCATED.

NAD 83 (TARGET BOTTOM HOLE)	
LATITUDE	= 40°20'08.99" (40.335831)
LONGITUDE	= 107°30'04.01" (107.501114)
NAD 27 (TARGET BOTTOM HOLE)	
LATITUDE	= 40°20'09.08" (40.335856)
LONGITUDE	= 107°30'01.79" (107.500497)

SCALE 1" = 1000'	DATE SURVEYED: 03-01-11	DATE DRAWN: 04-11-11
PARTY B.H. J.H. J.I.	REFERENCES G.L.O. PLAT	
WEATHER COOL	FILE SWEPI LP	