

Denver Division- Colorado

DJ - Hereford Ranch

Fiscus Mesa 13-14H

Fiscus Mesa 13-14H

Original Wellbore

Plan: APD Directional Plan

Standard Planning Report

07 April, 2011

EOG Resources Inc

Planning Report

Database:	EDM	Local Co-ordinate Reference:	Site Fiscus Mesa 13-14H
Company:	Denver Division- Colorado	TVD Reference:	RIG @ 4651.00ft (TBD)
Project:	DJ - Hereford Ranch	MD Reference:	RIG @ 4651.00ft (TBD)
Site:	Fiscus Mesa 13-14H	North Reference:	True
Well:	Fiscus Mesa 13-14H	Survey Calculation Method:	Minimum Curvature
Wellbore:	Original Wellbore		
Design:	APD Directional Plan		

Project	DJ - Hereford Ranch, Weld County		
Map System:	US State Plane 1927 (Exact solution)	System Datum:	Mean Sea Level
Geo Datum:	NAD 1927 (NADCON CONUS)		
Map Zone:	Colorado North 501		

Site	Fiscus Mesa 13-14H		
Site Position:		Northing:	523,053.31 ft
From:	Lat/Long	Easting:	2,460,296.24 ft
Position Uncertainty:	0.00 ft	Slot Radius:	"
		Latitude:	40° 45' 26.482 N
		Longitude:	103° 50' 18.532 W
		Grid Convergence:	1.07 deg

Well	Fiscus Mesa 13-14H					
Well Position	+N/-S	0.00 ft	Northing:	523,053.31 ft	Latitude:	40° 45' 26.482 N
	+E/-W	0.00 ft	Easting:	2,460,296.24 ft	Longitude:	103° 50' 18.532 W
Position Uncertainty		0.00 ft	Wellhead Elevation:	ft	Ground Level:	4,629.00 ft

Wellbore	Original Wellbore				
Magnetics	Model Name	Sample Date	Declination (deg)	Dip Angle (deg)	Field Strength (nT)
	IGRF200510	1/12/2011	8.40	67.51	53,479

Design	APD Directional Plan				
Audit Notes:					
Version:	Phase:	PROTOTYPE	Tie On Depth:	0.00	
Vertical Section:	Depth From (TVD) (ft)	+N/-S (ft)	+E/-W (ft)	Direction (deg)	
	0.00	0.00	0.00	152.02	

Plan Sections										
Measured Depth (ft)	Inclination (deg)	Azimuth (deg)	Vertical Depth (ft)	+N/-S (ft)	+E/-W (ft)	Dogleg Rate (?/100ft)	Build Rate (?/100ft)	Turn Rate (?/100ft)	TFO (deg)	Target
0.00	0.00	0.00	0.00	0.00	0.00	0.00	0.00	0.00	0.00	
5,104.53	0.00	0.00	5,104.53	0.00	0.00	0.00	0.00	0.00	0.00	
5,854.54	90.00	152.02	5,582.00	-421.65	224.02	12.00	12.00	0.00	152.02	
10,094.11	90.00	152.02	5,582.00	-4,165.61	2,213.17	0.00	0.00	0.00	0.00	Fiscus Mesa 13-14H

EOG Resources Inc

Planning Report

Database:	EDM	Local Co-ordinate Reference:	Site Fiscus Mesa 13-14H
Company:	Denver Division- Colorado	TVD Reference:	RIG @ 4651.00ft (TBD)
Project:	DJ - Hereford Ranch	MD Reference:	RIG @ 4651.00ft (TBD)
Site:	Fiscus Mesa 13-14H	North Reference:	True
Well:	Fiscus Mesa 13-14H	Survey Calculation Method:	Minimum Curvature
Wellbore:	Original Wellbore		
Design:	APD Directional Plan		

Planned Survey

Measured Depth (ft)	Inclination (deg)	Azimuth (deg)	Vertical Depth (ft)	+N/-S (ft)	+E/-W (ft)	Vertical Section (ft)	Dogleg Rate (?/100ft)	Build Rate (?/100ft)	Turn Rate (?/100ft)
0.00	0.00	0.00	0.00	0.00	0.00	0.00	0.00	0.00	0.00
100.00	0.00	0.00	100.00	0.00	0.00	0.00	0.00	0.00	0.00
200.00	0.00	0.00	200.00	0.00	0.00	0.00	0.00	0.00	0.00
300.00	0.00	0.00	300.00	0.00	0.00	0.00	0.00	0.00	0.00
400.00	0.00	0.00	400.00	0.00	0.00	0.00	0.00	0.00	0.00
500.00	0.00	0.00	500.00	0.00	0.00	0.00	0.00	0.00	0.00
600.00	0.00	0.00	600.00	0.00	0.00	0.00	0.00	0.00	0.00
700.00	0.00	0.00	700.00	0.00	0.00	0.00	0.00	0.00	0.00
800.00	0.00	0.00	800.00	0.00	0.00	0.00	0.00	0.00	0.00
9-5/8"									
900.00	0.00	0.00	900.00	0.00	0.00	0.00	0.00	0.00	0.00
1,000.00	0.00	0.00	1,000.00	0.00	0.00	0.00	0.00	0.00	0.00
1,100.00	0.00	0.00	1,100.00	0.00	0.00	0.00	0.00	0.00	0.00
1,200.00	0.00	0.00	1,200.00	0.00	0.00	0.00	0.00	0.00	0.00
1,300.00	0.00	0.00	1,300.00	0.00	0.00	0.00	0.00	0.00	0.00
1,400.00	0.00	0.00	1,400.00	0.00	0.00	0.00	0.00	0.00	0.00
1,500.00	0.00	0.00	1,500.00	0.00	0.00	0.00	0.00	0.00	0.00
1,600.00	0.00	0.00	1,600.00	0.00	0.00	0.00	0.00	0.00	0.00
1,700.00	0.00	0.00	1,700.00	0.00	0.00	0.00	0.00	0.00	0.00
1,800.00	0.00	0.00	1,800.00	0.00	0.00	0.00	0.00	0.00	0.00
1,900.00	0.00	0.00	1,900.00	0.00	0.00	0.00	0.00	0.00	0.00
2,000.00	0.00	0.00	2,000.00	0.00	0.00	0.00	0.00	0.00	0.00
2,100.00	0.00	0.00	2,100.00	0.00	0.00	0.00	0.00	0.00	0.00
2,200.00	0.00	0.00	2,200.00	0.00	0.00	0.00	0.00	0.00	0.00
2,300.00	0.00	0.00	2,300.00	0.00	0.00	0.00	0.00	0.00	0.00
2,400.00	0.00	0.00	2,400.00	0.00	0.00	0.00	0.00	0.00	0.00
2,500.00	0.00	0.00	2,500.00	0.00	0.00	0.00	0.00	0.00	0.00
2,600.00	0.00	0.00	2,600.00	0.00	0.00	0.00	0.00	0.00	0.00
2,700.00	0.00	0.00	2,700.00	0.00	0.00	0.00	0.00	0.00	0.00
2,800.00	0.00	0.00	2,800.00	0.00	0.00	0.00	0.00	0.00	0.00
2,900.00	0.00	0.00	2,900.00	0.00	0.00	0.00	0.00	0.00	0.00
3,000.00	0.00	0.00	3,000.00	0.00	0.00	0.00	0.00	0.00	0.00
3,100.00	0.00	0.00	3,100.00	0.00	0.00	0.00	0.00	0.00	0.00
3,200.00	0.00	0.00	3,200.00	0.00	0.00	0.00	0.00	0.00	0.00
3,300.00	0.00	0.00	3,300.00	0.00	0.00	0.00	0.00	0.00	0.00
3,400.00	0.00	0.00	3,400.00	0.00	0.00	0.00	0.00	0.00	0.00
3,500.00	0.00	0.00	3,500.00	0.00	0.00	0.00	0.00	0.00	0.00
3,600.00	0.00	0.00	3,600.00	0.00	0.00	0.00	0.00	0.00	0.00
3,700.00	0.00	0.00	3,700.00	0.00	0.00	0.00	0.00	0.00	0.00
3,800.00	0.00	0.00	3,800.00	0.00	0.00	0.00	0.00	0.00	0.00
3,900.00	0.00	0.00	3,900.00	0.00	0.00	0.00	0.00	0.00	0.00
4,000.00	0.00	0.00	4,000.00	0.00	0.00	0.00	0.00	0.00	0.00
4,100.00	0.00	0.00	4,100.00	0.00	0.00	0.00	0.00	0.00	0.00
4,200.00	0.00	0.00	4,200.00	0.00	0.00	0.00	0.00	0.00	0.00
4,300.00	0.00	0.00	4,300.00	0.00	0.00	0.00	0.00	0.00	0.00
4,400.00	0.00	0.00	4,400.00	0.00	0.00	0.00	0.00	0.00	0.00
4,500.00	0.00	0.00	4,500.00	0.00	0.00	0.00	0.00	0.00	0.00
4,600.00	0.00	0.00	4,600.00	0.00	0.00	0.00	0.00	0.00	0.00
4,700.00	0.00	0.00	4,700.00	0.00	0.00	0.00	0.00	0.00	0.00
4,800.00	0.00	0.00	4,800.00	0.00	0.00	0.00	0.00	0.00	0.00
4,900.00	0.00	0.00	4,900.00	0.00	0.00	0.00	0.00	0.00	0.00
5,000.00	0.00	0.00	5,000.00	0.00	0.00	0.00	0.00	0.00	0.00
5,100.00	0.00	0.00	5,100.00	0.00	0.00	0.00	0.00	0.00	0.00

EOG Resources Inc

Planning Report

Database:	EDM	Local Co-ordinate Reference:	Site Fiscus Mesa 13-14H
Company:	Denver Division- Colorado	TVD Reference:	RIG @ 4651.00ft (TBD)
Project:	DJ - Hereford Ranch	MD Reference:	RIG @ 4651.00ft (TBD)
Site:	Fiscus Mesa 13-14H	North Reference:	True
Well:	Fiscus Mesa 13-14H	Survey Calculation Method:	Minimum Curvature
Wellbore:	Original Wellbore		
Design:	APD Directional Plan		

Planned Survey

Measured Depth (ft)	Inclination (deg)	Azimuth (deg)	Vertical Depth (ft)	+N/-S (ft)	+E/-W (ft)	Vertical Section (ft)	Dogleg Rate (?/100ft)	Build Rate (?/100ft)	Turn Rate (?/100ft)
5,104.53	0.00	0.00	5,104.53	0.00	0.00	0.00	0.00	0.00	0.00
5,200.00	11.46	152.02	5,199.37	-8.40	4.46	9.51	12.00	12.00	0.00
5,300.00	23.46	152.02	5,294.59	-34.84	18.51	39.45	12.00	12.00	0.00
5,400.00	35.46	152.02	5,381.50	-78.19	41.54	88.54	12.00	12.00	0.00
5,500.00	47.46	152.02	5,456.31	-136.55	72.55	154.62	12.00	12.00	0.00
5,600.00	59.46	152.02	5,515.75	-207.37	110.17	234.82	12.00	12.00	0.00
5,700.00	71.46	152.02	5,557.21	-287.55	152.77	325.61	12.00	12.00	0.00
5,800.00	83.46	152.02	5,578.89	-373.59	198.49	423.05	12.00	12.00	0.00
5,854.54	90.00	152.02	5,582.00	-421.65	224.02	477.47	12.00	12.00	0.00
7"									
5,900.00	90.00	152.02	5,582.00	-461.80	245.35	522.93	0.00	0.00	0.00
6,000.00	90.00	152.02	5,582.00	-550.11	292.27	622.93	0.00	0.00	0.00
6,100.00	90.00	152.02	5,582.00	-638.42	339.19	722.93	0.00	0.00	0.00
6,200.00	90.00	152.02	5,582.00	-726.73	386.11	822.93	0.00	0.00	0.00
6,300.00	90.00	152.02	5,582.00	-815.04	433.03	922.93	0.00	0.00	0.00
6,400.00	90.00	152.02	5,582.00	-903.35	479.95	1,022.93	0.00	0.00	0.00
6,500.00	90.00	152.02	5,582.00	-991.66	526.86	1,122.93	0.00	0.00	0.00
6,600.00	90.00	152.02	5,582.00	-1,079.97	573.78	1,222.93	0.00	0.00	0.00
6,700.00	90.00	152.02	5,582.00	-1,168.28	620.70	1,322.93	0.00	0.00	0.00
6,800.00	90.00	152.02	5,582.00	-1,256.59	667.62	1,422.93	0.00	0.00	0.00
6,900.00	90.00	152.02	5,582.00	-1,344.90	714.54	1,522.93	0.00	0.00	0.00
7,000.00	90.00	152.02	5,582.00	-1,433.21	761.46	1,622.93	0.00	0.00	0.00
7,100.00	90.00	152.02	5,582.00	-1,521.52	808.38	1,722.93	0.00	0.00	0.00
7,200.00	90.00	152.02	5,582.00	-1,609.83	855.30	1,822.93	0.00	0.00	0.00
7,300.00	90.00	152.02	5,582.00	-1,698.14	902.21	1,922.93	0.00	0.00	0.00
7,400.00	90.00	152.02	5,582.00	-1,786.45	949.13	2,022.93	0.00	0.00	0.00
7,500.00	90.00	152.02	5,582.00	-1,874.76	996.05	2,122.93	0.00	0.00	0.00
7,600.00	90.00	152.02	5,582.00	-1,963.07	1,042.97	2,222.93	0.00	0.00	0.00
7,700.00	90.00	152.02	5,582.00	-2,051.38	1,089.89	2,322.93	0.00	0.00	0.00
7,800.00	90.00	152.02	5,582.00	-2,139.69	1,136.81	2,422.93	0.00	0.00	0.00
7,900.00	90.00	152.02	5,582.00	-2,228.00	1,183.73	2,522.93	0.00	0.00	0.00
8,000.00	90.00	152.02	5,582.00	-2,316.31	1,230.65	2,622.93	0.00	0.00	0.00
8,100.00	90.00	152.02	5,582.00	-2,404.62	1,277.56	2,722.93	0.00	0.00	0.00
8,200.00	90.00	152.02	5,582.00	-2,492.93	1,324.48	2,822.93	0.00	0.00	0.00
8,300.00	90.00	152.02	5,582.00	-2,581.24	1,371.40	2,922.93	0.00	0.00	0.00
8,400.00	90.00	152.02	5,582.00	-2,669.55	1,418.32	3,022.93	0.00	0.00	0.00
8,500.00	90.00	152.02	5,582.00	-2,757.86	1,465.24	3,122.93	0.00	0.00	0.00
8,600.00	90.00	152.02	5,582.00	-2,846.17	1,512.16	3,222.93	0.00	0.00	0.00
8,700.00	90.00	152.02	5,582.00	-2,934.48	1,559.08	3,322.93	0.00	0.00	0.00
8,800.00	90.00	152.02	5,582.00	-3,022.78	1,606.00	3,422.93	0.00	0.00	0.00
8,900.00	90.00	152.02	5,582.00	-3,111.09	1,652.91	3,522.93	0.00	0.00	0.00
9,000.00	90.00	152.02	5,582.00	-3,199.40	1,699.83	3,622.93	0.00	0.00	0.00
9,100.00	90.00	152.02	5,582.00	-3,287.71	1,746.75	3,722.93	0.00	0.00	0.00
9,200.00	90.00	152.02	5,582.00	-3,376.02	1,793.67	3,822.93	0.00	0.00	0.00
9,300.00	90.00	152.02	5,582.00	-3,464.33	1,840.59	3,922.93	0.00	0.00	0.00
9,400.00	90.00	152.02	5,582.00	-3,552.64	1,887.51	4,022.93	0.00	0.00	0.00
9,500.00	90.00	152.02	5,582.00	-3,640.95	1,934.43	4,122.93	0.00	0.00	0.00
9,600.00	90.00	152.02	5,582.00	-3,729.26	1,981.35	4,222.93	0.00	0.00	0.00
9,700.00	90.00	152.02	5,582.00	-3,817.57	2,028.26	4,322.93	0.00	0.00	0.00
9,800.00	90.00	152.02	5,582.00	-3,905.88	2,075.18	4,422.93	0.00	0.00	0.00
9,900.00	90.00	152.02	5,582.00	-3,994.19	2,122.10	4,522.93	0.00	0.00	0.00
10,000.00	90.00	152.02	5,582.00	-4,082.50	2,169.02	4,622.93	0.00	0.00	0.00
10,094.11	90.00	152.02	5,582.00	-4,165.61	2,213.17	4,717.04	0.00	0.00	0.00

EOG Resources Inc

Planning Report

Database:	EDM	Local Co-ordinate Reference:	Site Fiscus Mesa 13-14H
Company:	Denver Division- Colorado	TVD Reference:	RIG @ 4651.00ft (TBD)
Project:	DJ - Hereford Ranch	MD Reference:	RIG @ 4651.00ft (TBD)
Site:	Fiscus Mesa 13-14H	North Reference:	True
Well:	Fiscus Mesa 13-14H	Survey Calculation Method:	Minimum Curvature
Wellbore:	Original Wellbore		
Design:	APD Directional Plan		

Planned Survey

Measured Depth (ft)	Inclination (deg)	Azimuth (deg)	Vertical Depth (ft)	+N/-S (ft)	+E/-W (ft)	Vertical Section (ft)	Dogleg Rate (?/100ft)	Build Rate (?/100ft)	Turn Rate (?/100ft)
Fiscus Mesa 13-14H (BHL)									

Targets

Target Name

- hit/miss target	Dip Angle (deg)	Dip Dir. (deg)	TVD (ft)	+N/-S (ft)	+E/-W (ft)	Northing (ft)	Easting (ft)	Latitude	Longitude
- Shape									
Fiscus Mesa 13-14H (0.00	0.00	5,582.00	-4,165.61	2,213.17	518,929.91	2,462,587.07	40° 44' 45.319 N	103° 49' 49.778 W
- plan hits target center									
- Point									

Casing Points

Measured Depth (ft)	Vertical Depth (ft)	Name	Casing Diameter (")	Hole Diameter (")
800.00	800.00	9-5/8"	9-5/8	13-1/2
5,854.54	5,582.00	7"	7	8-3/4
10,094.11	5,582.00	4 1/2"	4-1/2	6-1/4

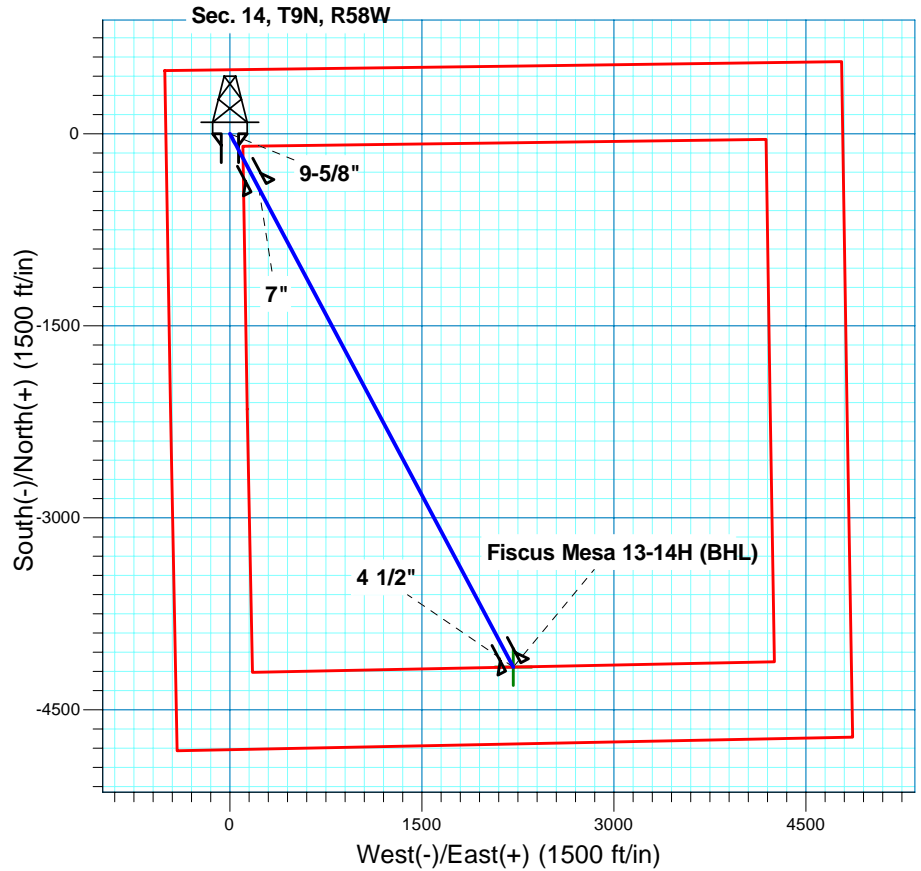
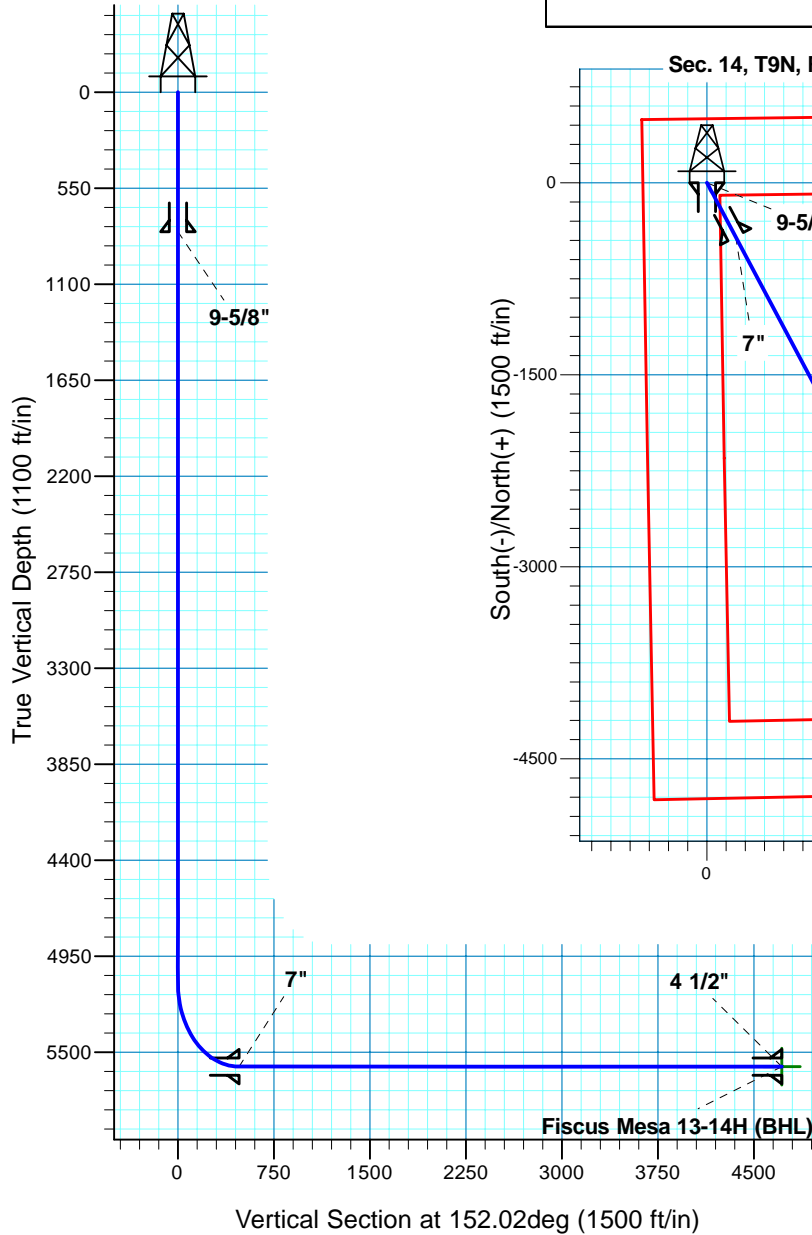
Fiscus Mesa 13-14H

Section 14 T9N R58W

Weld County, CO

Surface Location

NAD 1927 (NADCON CONUS) Colorado North 501
Ground Elevation: 4629.00 RIG @ 4651.00ft (TBD)
Northing Easting Latitude Longitude
523053.31 2460296.24 40° 45' 26.482 N 103° 50' 18.532 W



T M
Azimuths to True North
Magnetic North: 8.40°
Magnetic Field
Strength: 53478.8snT
Dip Angle: 67.51°
Date: 1/12/2011
Model: IGRF200510

Project: DJ - Hereford Ranch
Site: Fiscus Mesa 13-14H
Well: Fiscus Mesa 13-14H
Plan: APD Directional Plan

SECTION DETAILS

Sec	MD	Inc	Azi	TVD	+N/-S	+E/-W	DLeg	TFace	VSec	Target
1	0.00	0.00	0.00	0.00	0.00	0.00	0.00	0.00	0.00	
2	5104.53	0.00	0.00	5104.53	0.00	0.00	0.00	0.00	0.00	
3	5854.54	90.00	152.02	5582.00	-421.65	224.02	12.00	152.02	477.47	
4	10094.11	90.00	152.02	5582.00	-4165.61	2213.17	0.00	0.00	4717.04	Fiscus Mesa 13-14H (BHL)

TARGET DETAILS

Name	TVD	+N/-S	+E/-W	Northing	Easting	Latitude	Longitude	Shape Point
Fiscus Mesa 13-14H (BHL)	5582.00	-4165.61	2213.17	518929.91	2462587.07	40° 44' 45.319 N	103° 49' 49.778 W	