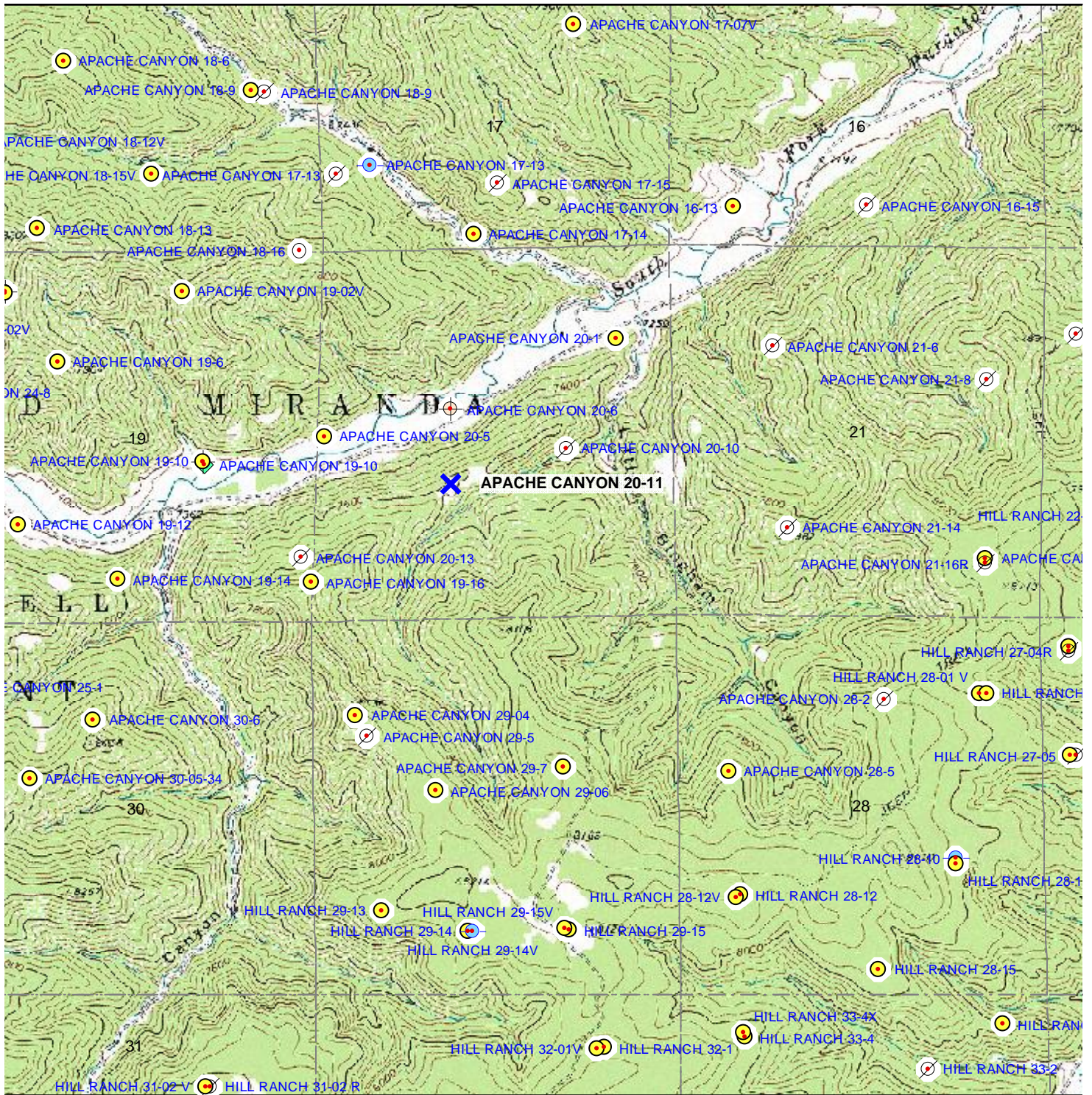


TOPOGRAPHIC MAP



- X Proposed Well
- Producing
- ⊗ Plugged & Abandoned
- ⊗ Abandoned Location
- ⊗ Shut-In
- ◆ Pending Permits
- Permits

APACHE CANYON 20-11
1,987' FSL & 1,907' FWL
SEC. 20, T34S, R67W, 6th P.M.
LAS ANIMAS COUNTY, CO



Scale 1" = 2,000'