



SUPERIOR
Hays,
Kansas

SONIC LOG

Company		MULL DRILLING COMPANY, INC.	
Well		APC-TALLMAN #2-3	
Field			
County		KIOWA	
State		COLORADO	
Location:		API # : 05-061-06356-00	
Permanent Datum		GROUND LEVEL	
Log Measured From		KELLY BUSHING 11' A.G.L.	
Drilling Measured From		KELLY BUSHING	
SEC 3		TWP 18S	
		RGE 45W	
Other Services		CDL/CNL/PE	
DIL/MEL			
Elevation		K.B. 4002	
		D.F. 4000	
		G.L. 3991	
Date	3/18/11		
Run Number	TWO		
Depth Driller	5057		
Depth Logger	5057		
Bottom Logged Interval	5042		
Top Log Interval	3500		
Casing Driller	8 5/8" @ 326		
Casing Logger	322		
Bit Size	7 7/8"		
Type Fluid in Hole	CHEMICAL MUD	CHLORIDES 3200 PPM	
Density / Viscosity	9.2/56		
pH / Fluid Loss	10.5/8.0		
Source of Sample	FLOWLINE		
Rim @ Meas. Temp	.95 @ 78F		
Rmf @ Meas. Temp	.71 @ 78F		
Rmc @ Meas. Temp	1.13 @ 78F		
Source of Rmf / Rmc	MEASUREMENT		
Rim @ BHT	.59 @ 125F		
Time Circulation Stopped	2 HOURS		
Time Logger on Bottom			
Maximum Recorded Temperature	125F		
Equipment Number	0836		
Location	HAYS, KANSAS		
Recorded By	JASON CAPPELLUCCI		
Witnessed By	PHIL ASKEY		

<<< Fold Here >>>

All interpretations are opinions based on inferences from electrical or other measurements and we cannot and do not guarantee the accuracy or correctness of any interpretation, and we shall not, except in the case of gross or willful negligence on our part, be liable or responsible for any loss, costs, damages, or expenses incurred or sustained by anyone resulting from any interpretation made by any of our officers, agents or employees. These interpretations are also subject to our general terms and conditions set out in our current Price Schedule.

Comments

THANK YOU FOR USING SUPERIOR WELL SERVICE HAYS, KANSAS (785) 628-6395
DIRECTIONS
BRANDON CO. - EAST EDGE (MM 186) 5 N. - W. INTO



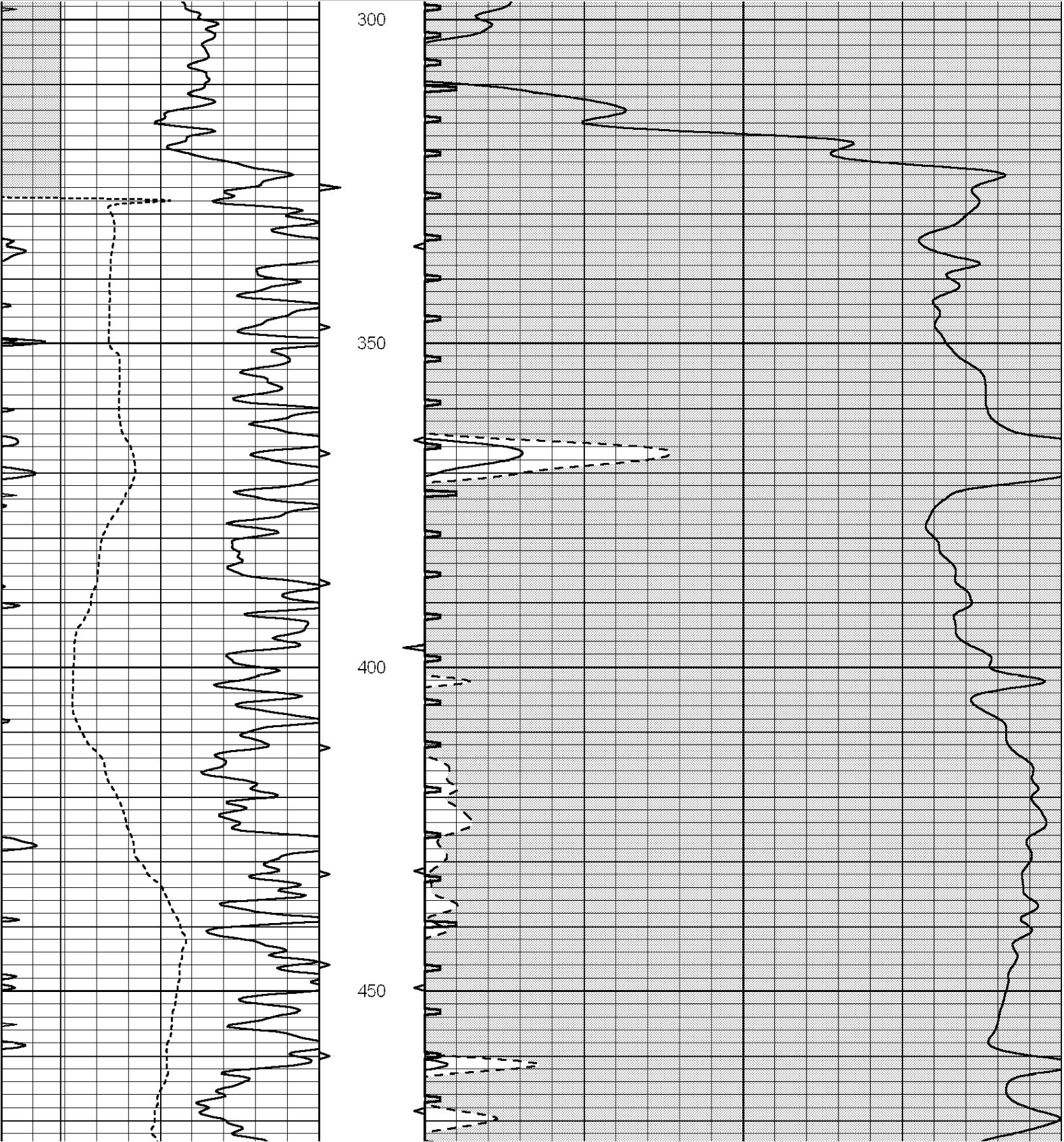
SUPERIOR
Hays,
Kansas

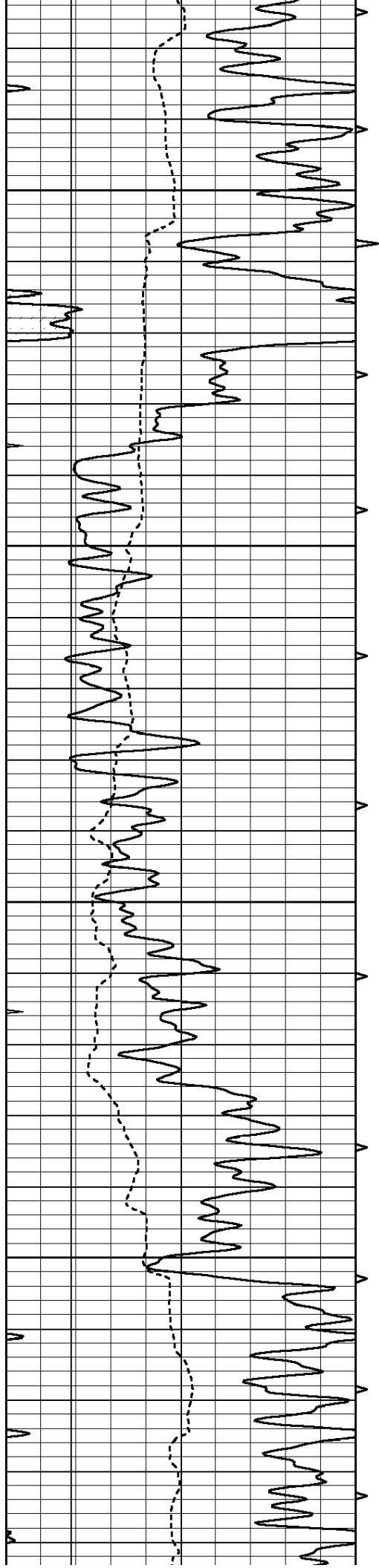
MAIN SECTION

Database File: 006616ddn.db
Dataset Pathname: pass6.2
Presentation Format: slt
Dataset Creation: Fri Mar 18 21:28:50 2011 by Calc Open-Cased 090629
Charted by: Depth in Feet scaled 1:240

0	GAMMA RAY (GAPI)	150	ABHV	140	DELTA TIME (usec/ft)		40	
6	CALIPER (in)	16	10 (ft3)	0	30	SONIC POROSITY (pu)		-10

0	MINMK	20	TBHV	0	ITT (msec)		20	
			0 (ft3)	10				



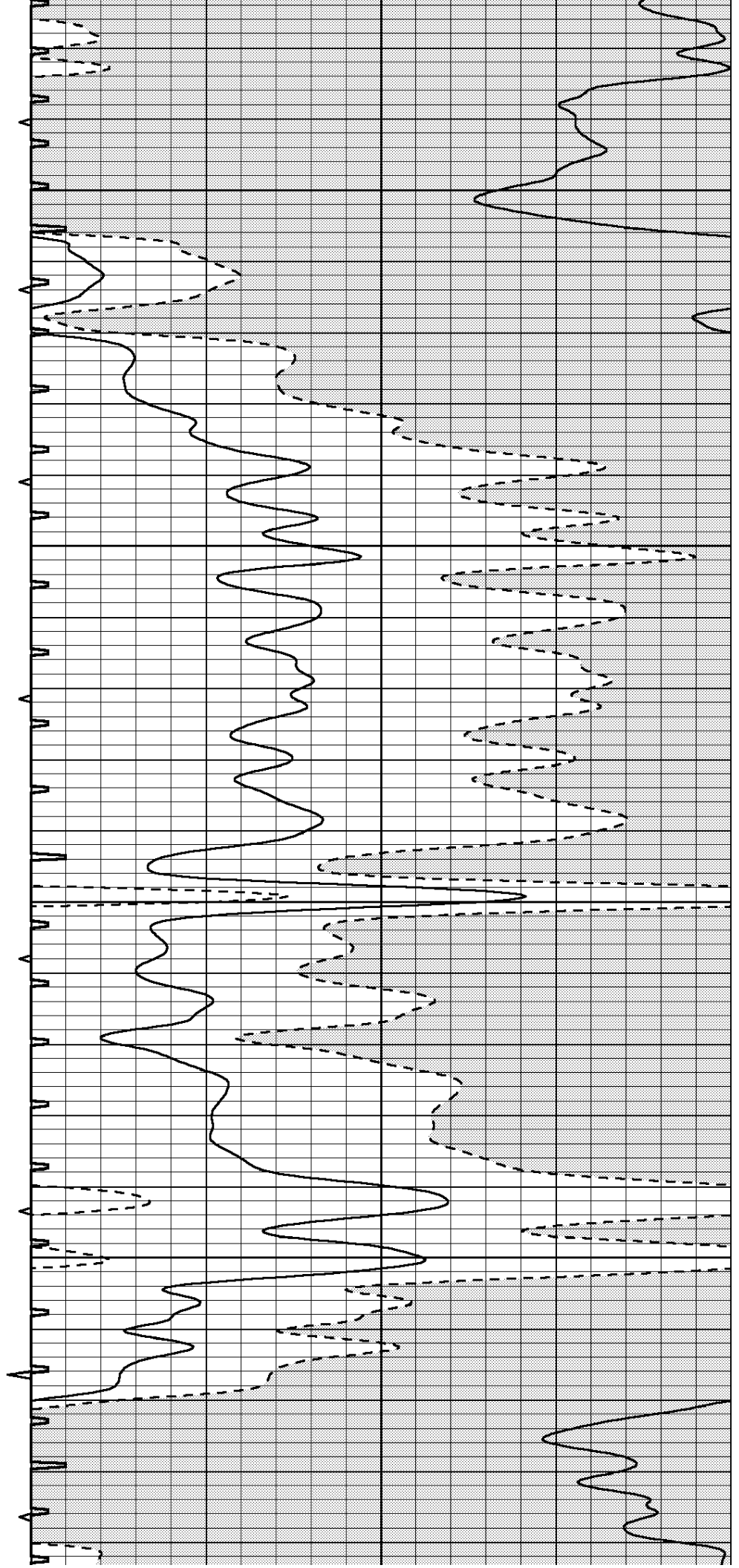


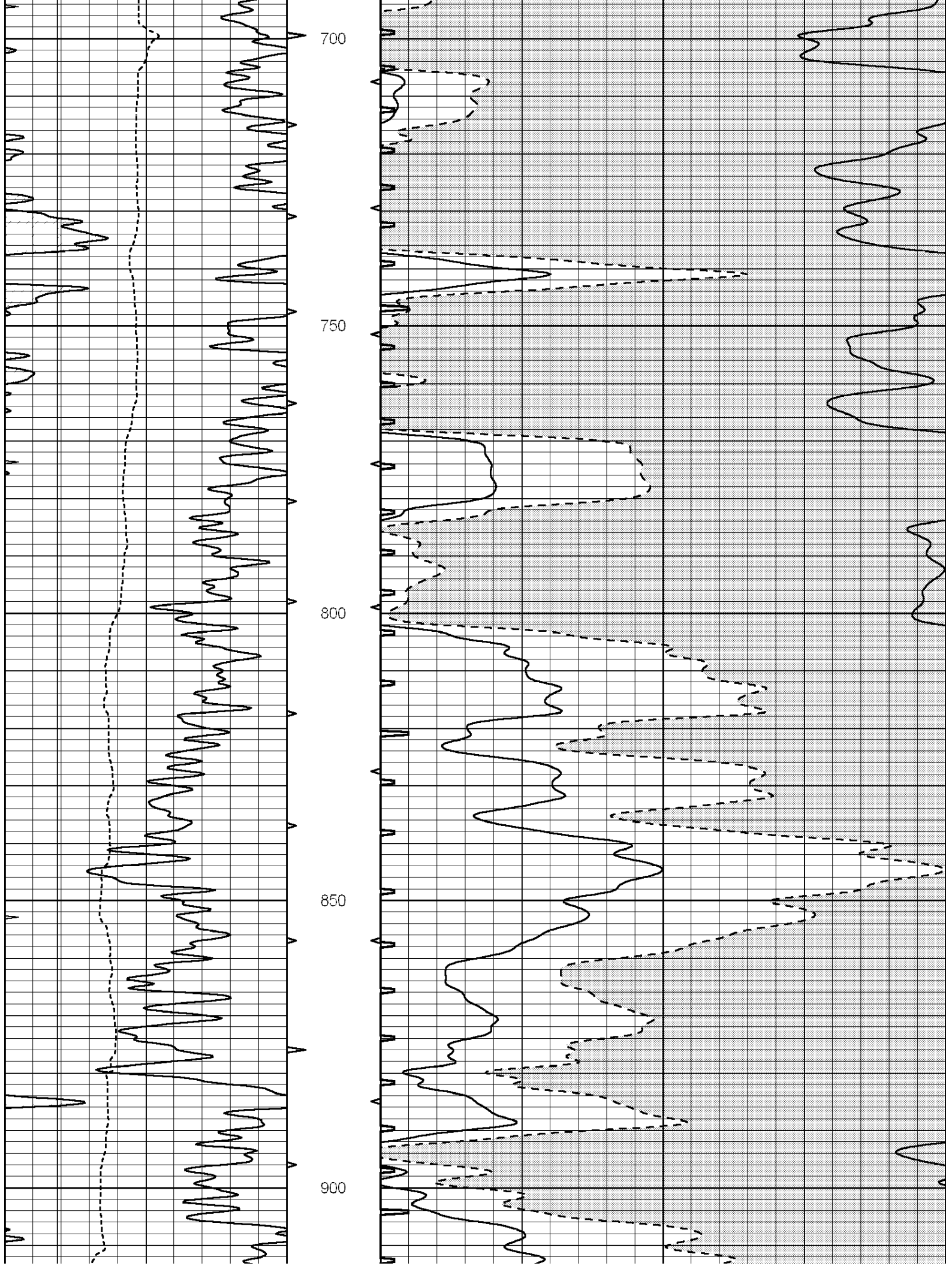
500

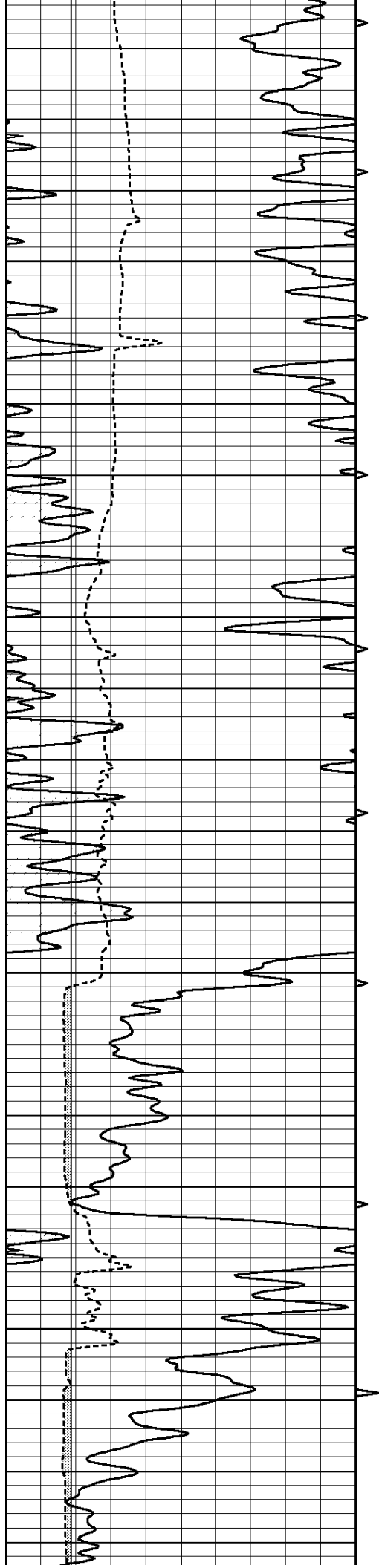
550

600

650





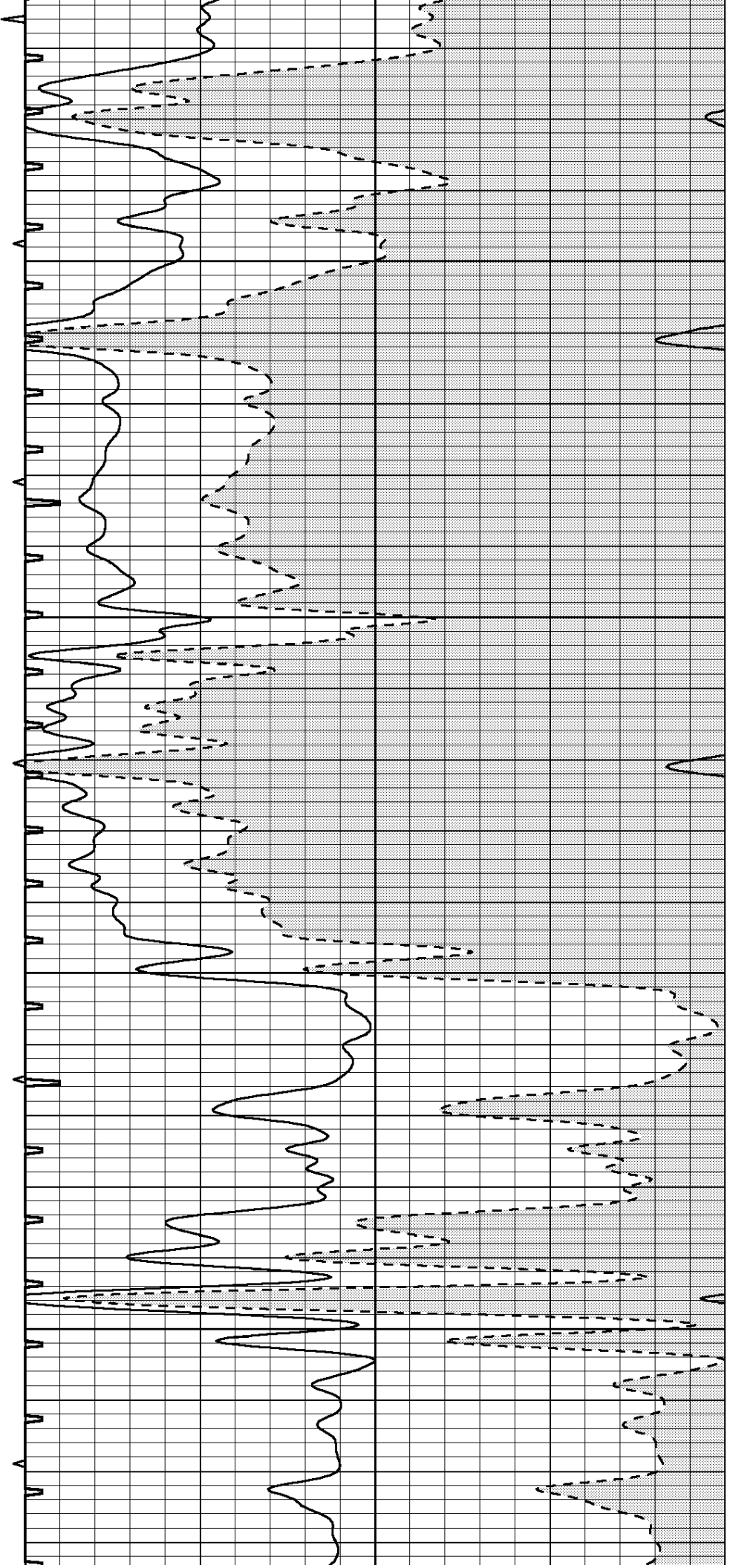


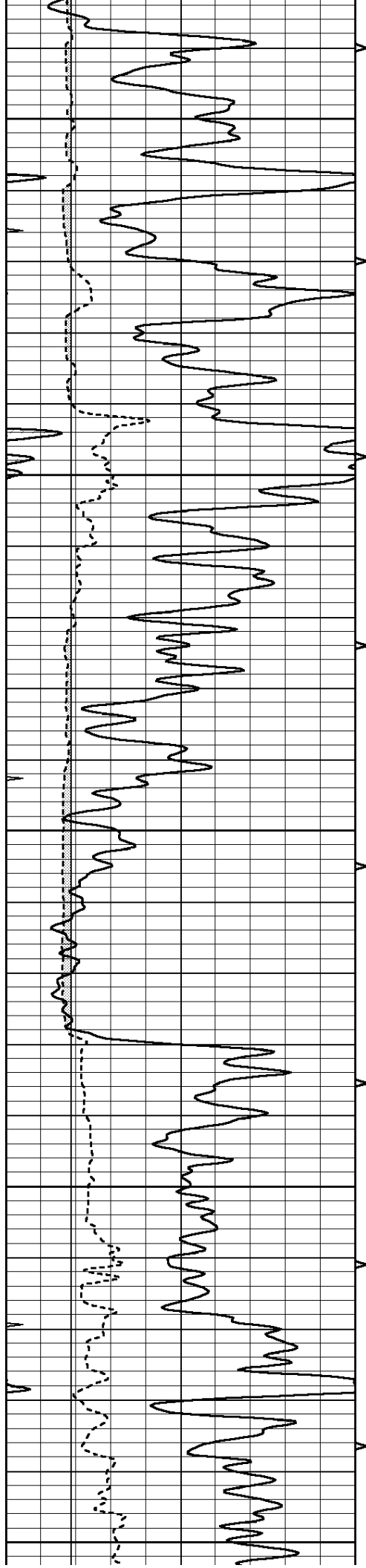
950

1000

1050

1100





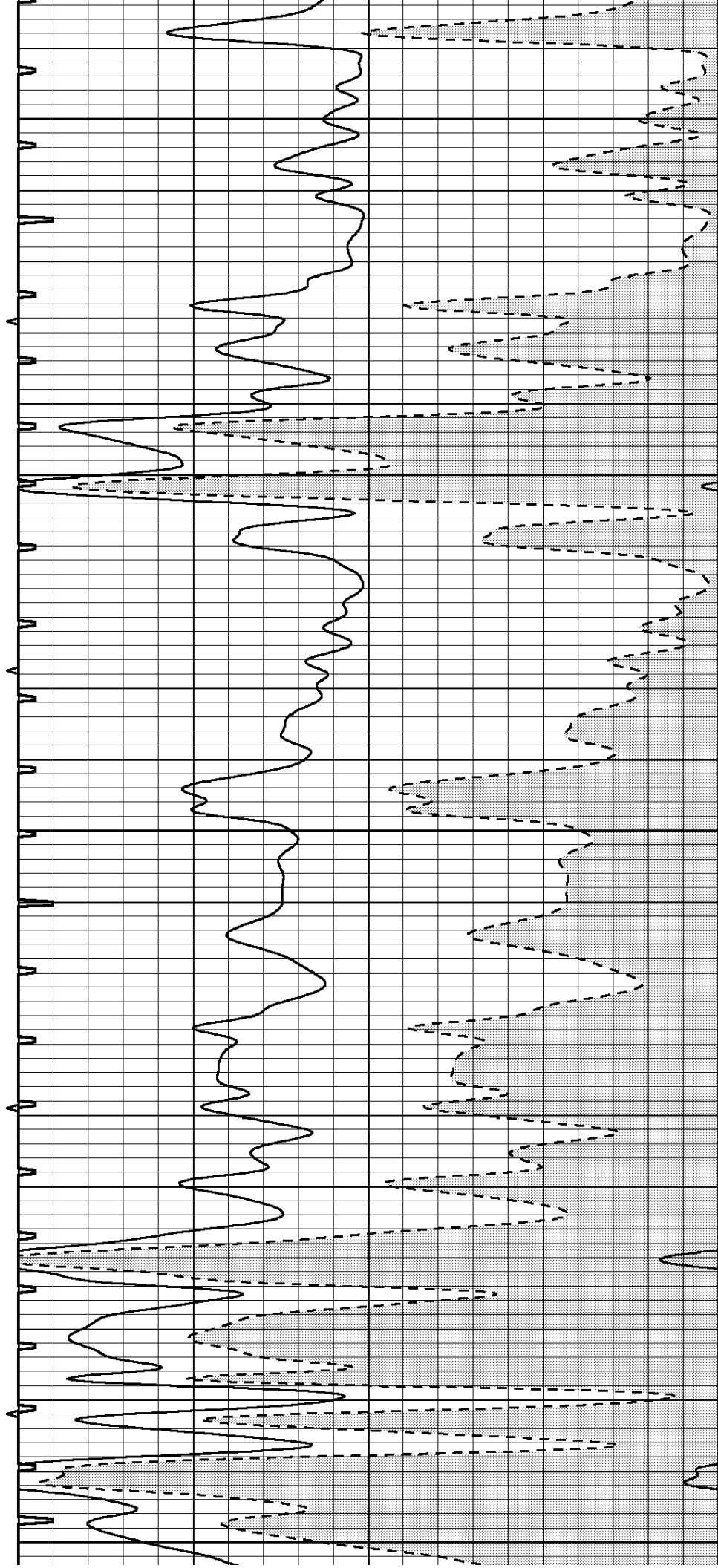
1150

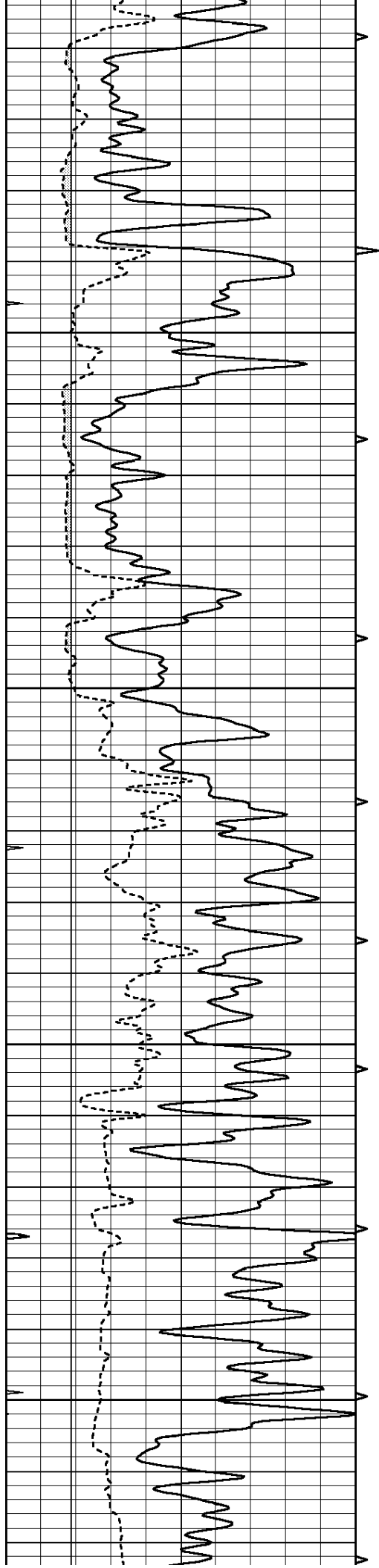
1200

1250

1300

1350



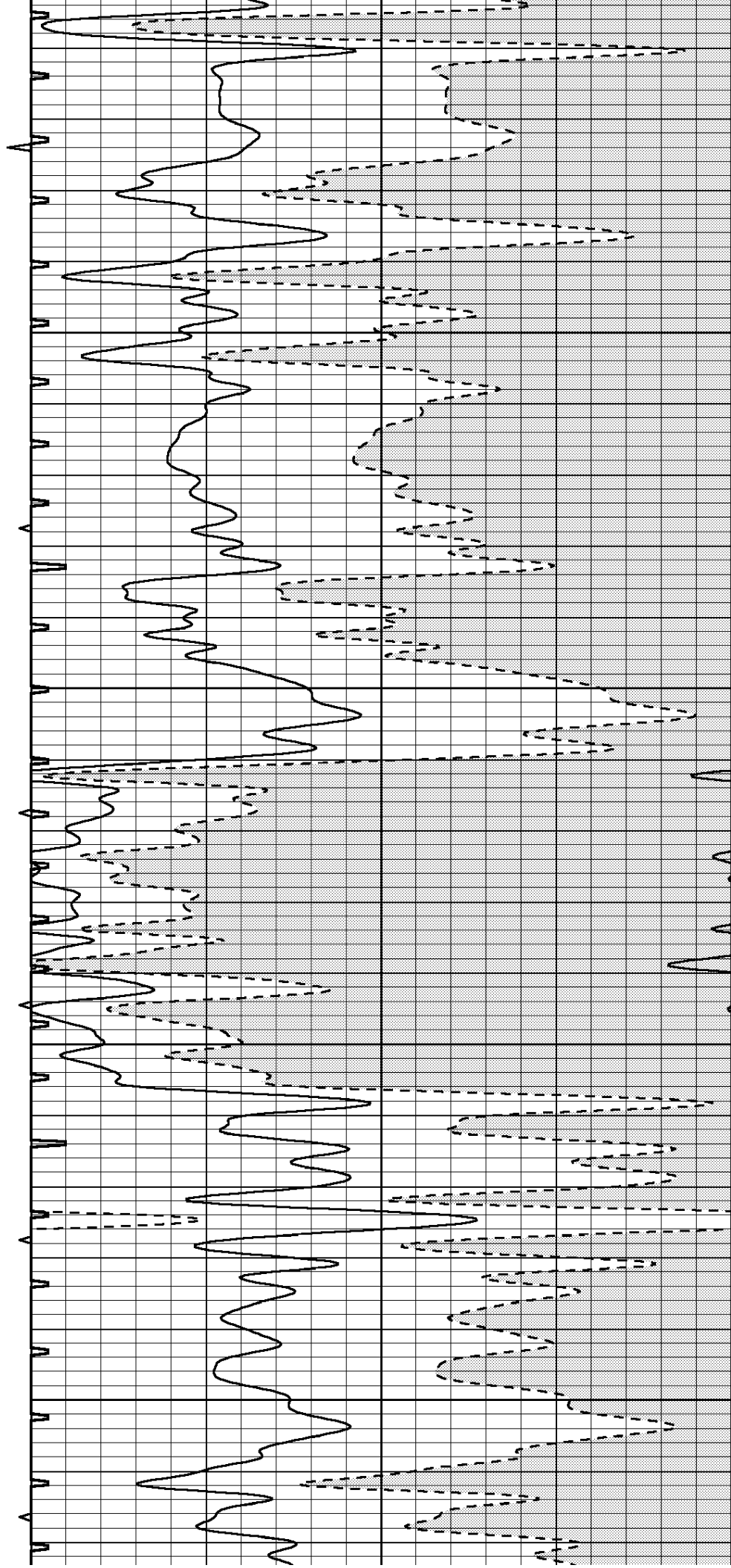


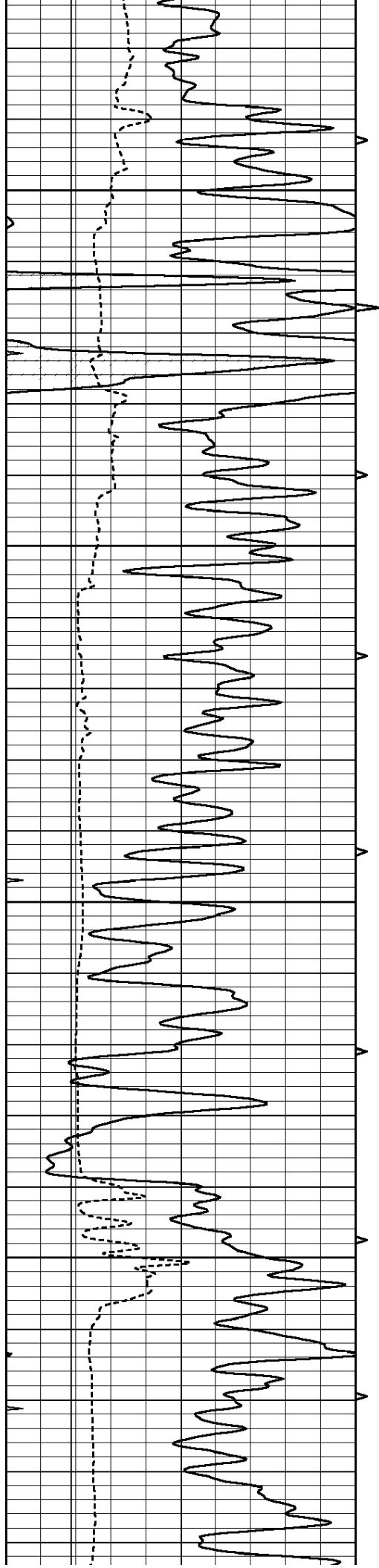
1400

1450

1500

1550



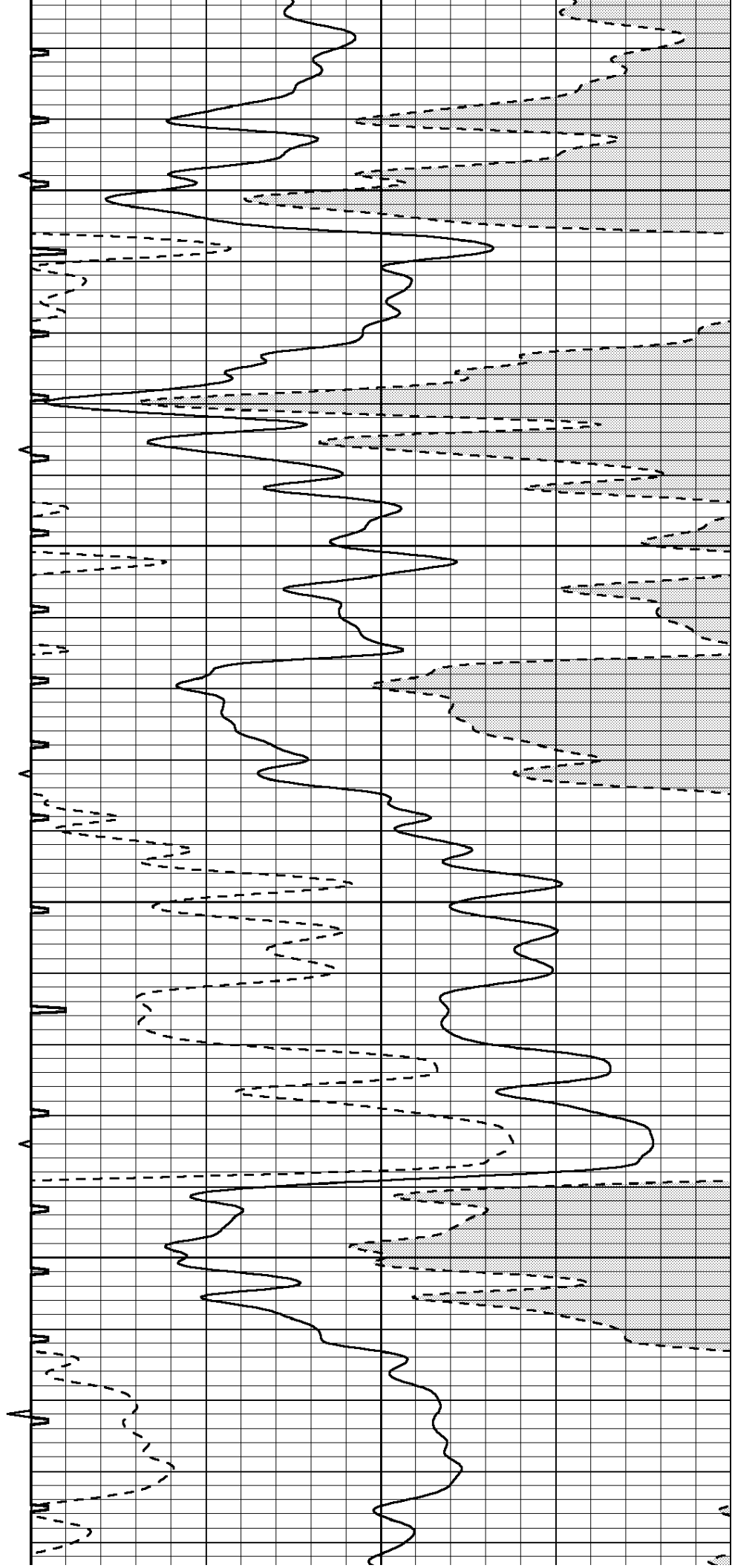


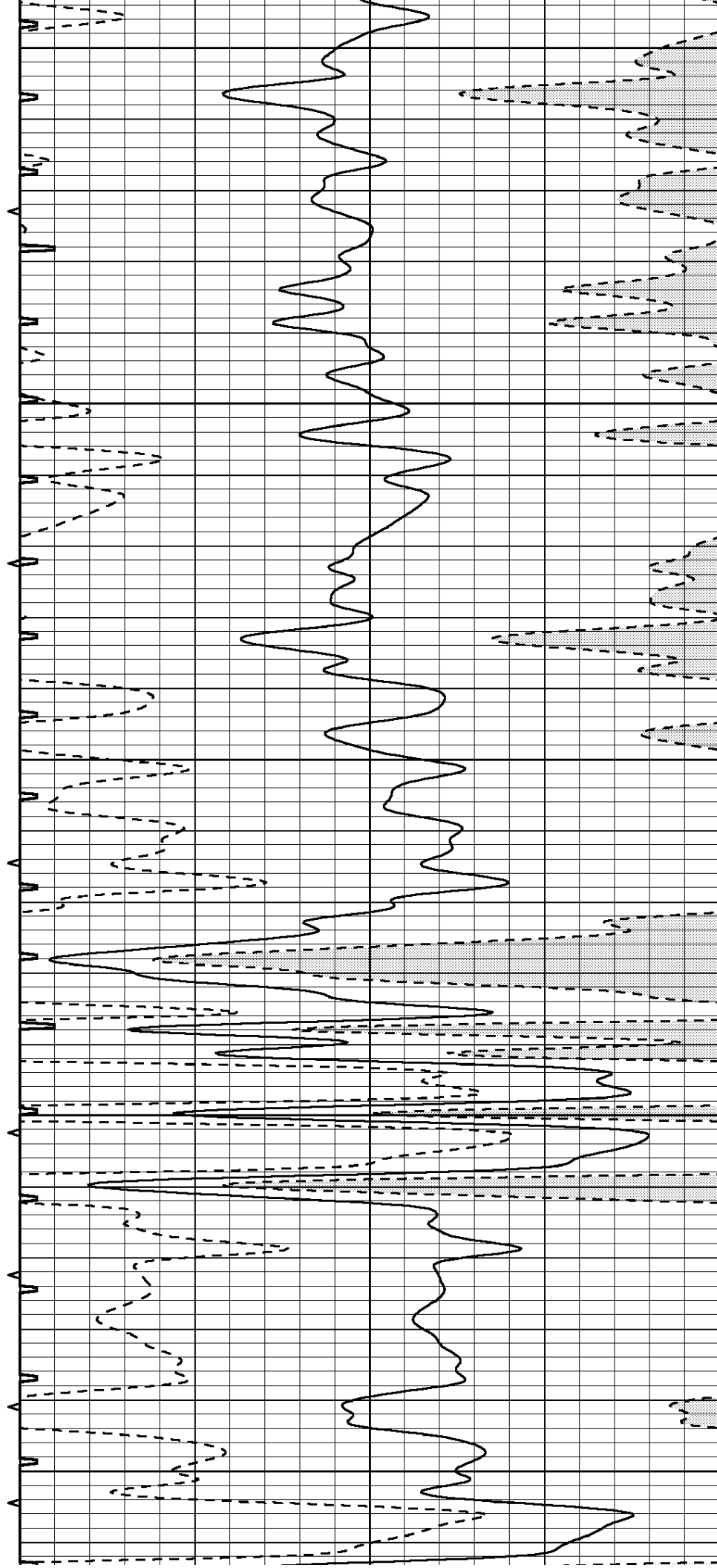
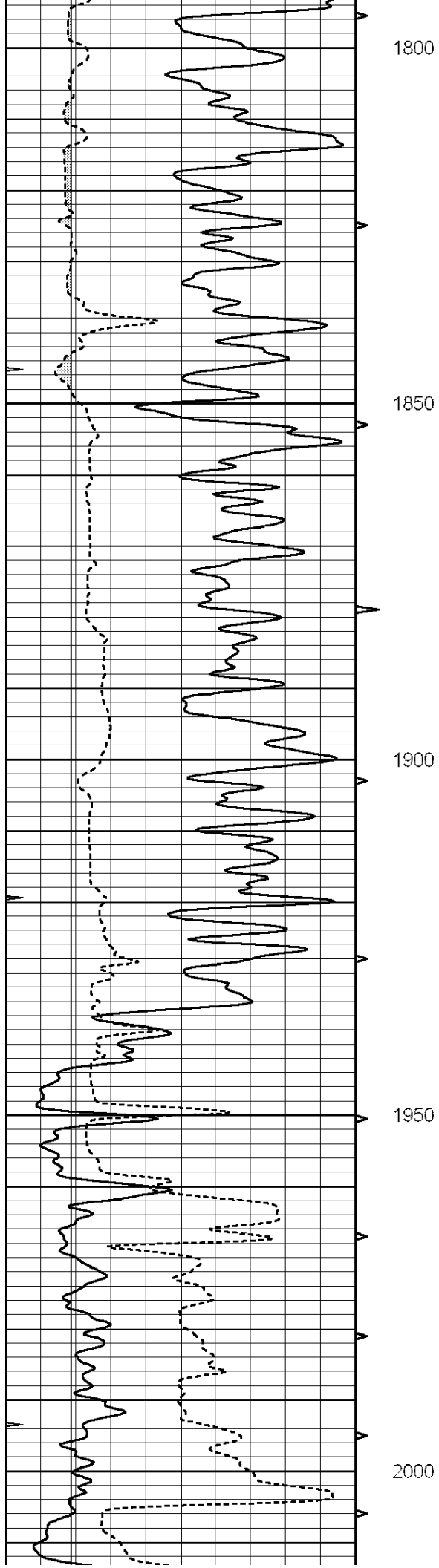
1600

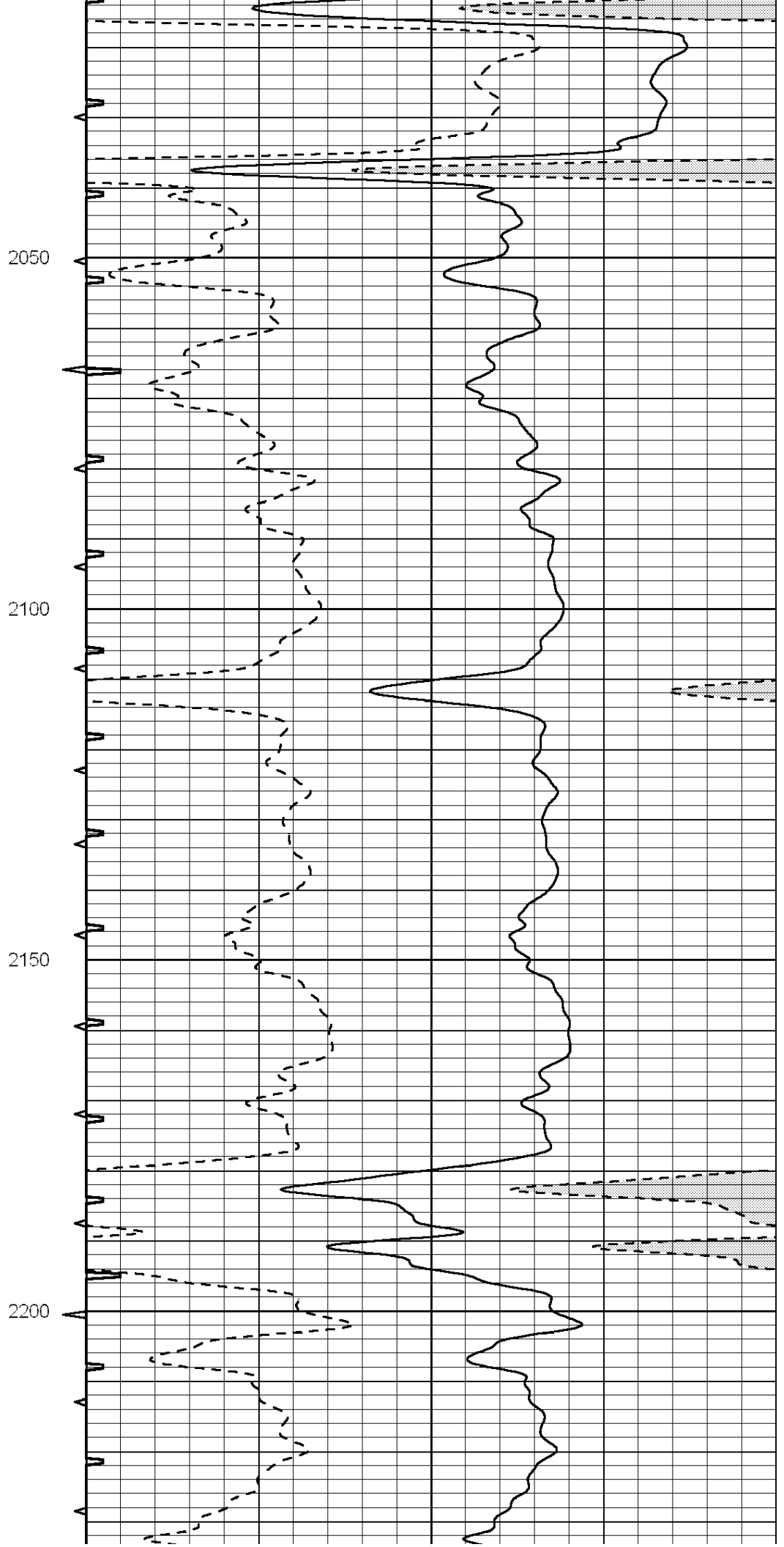
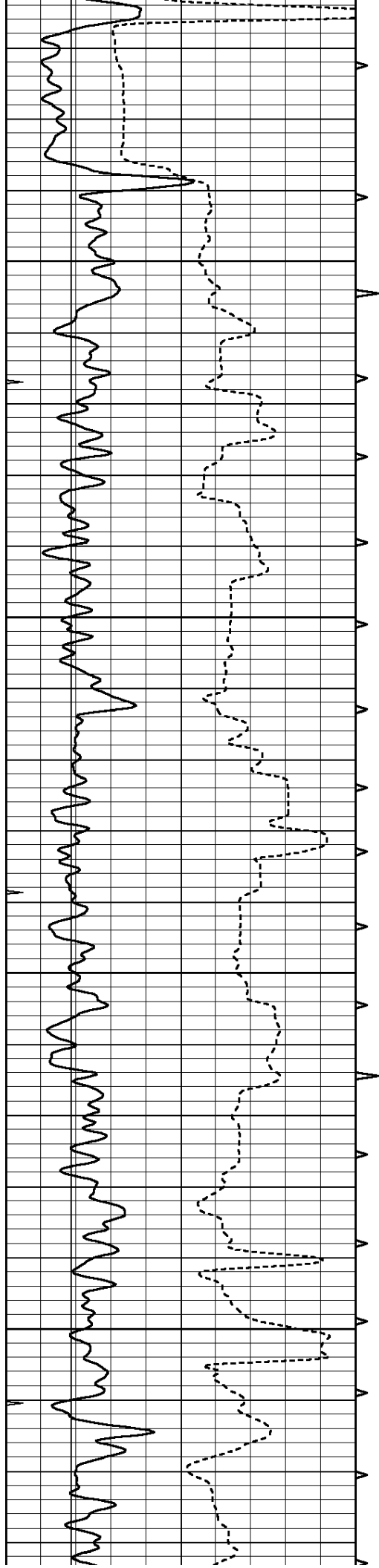
1650

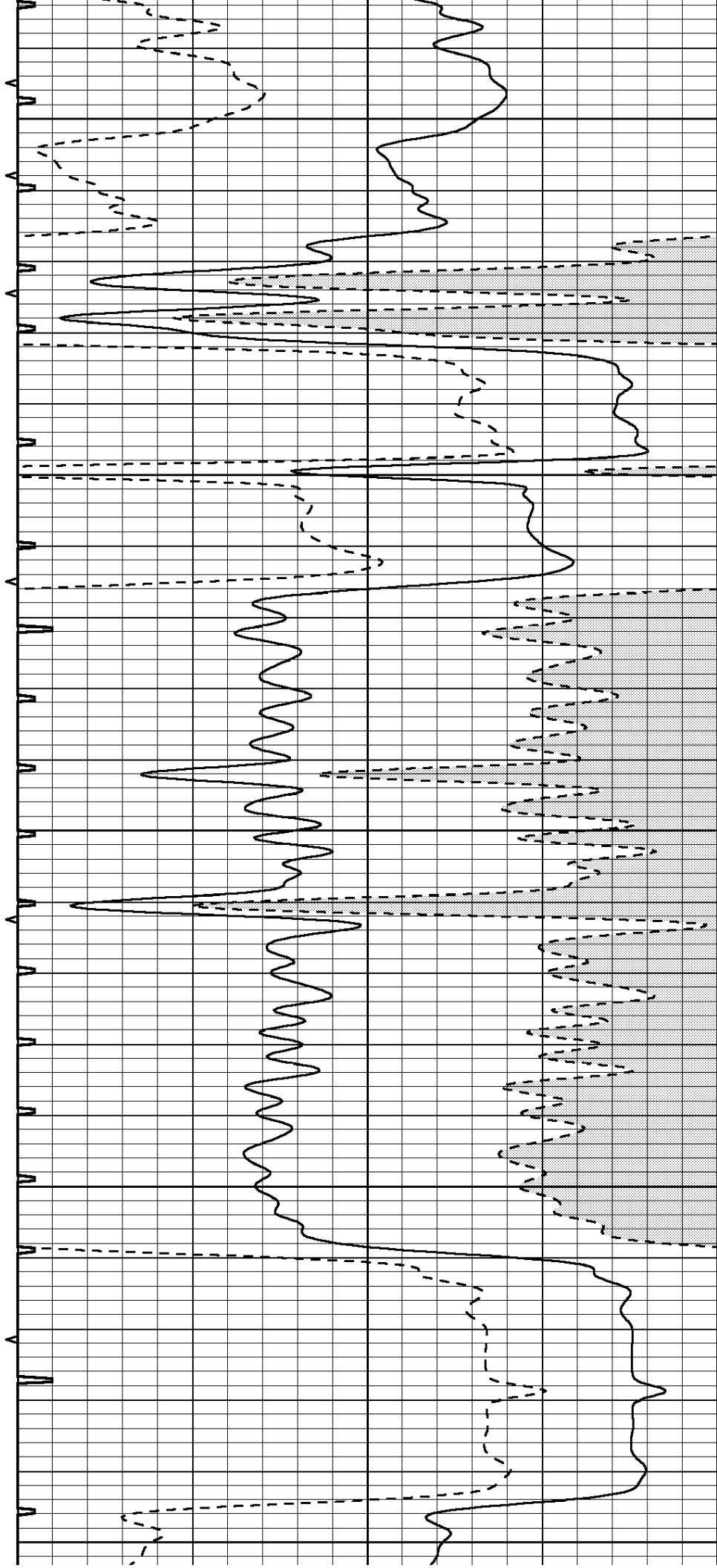
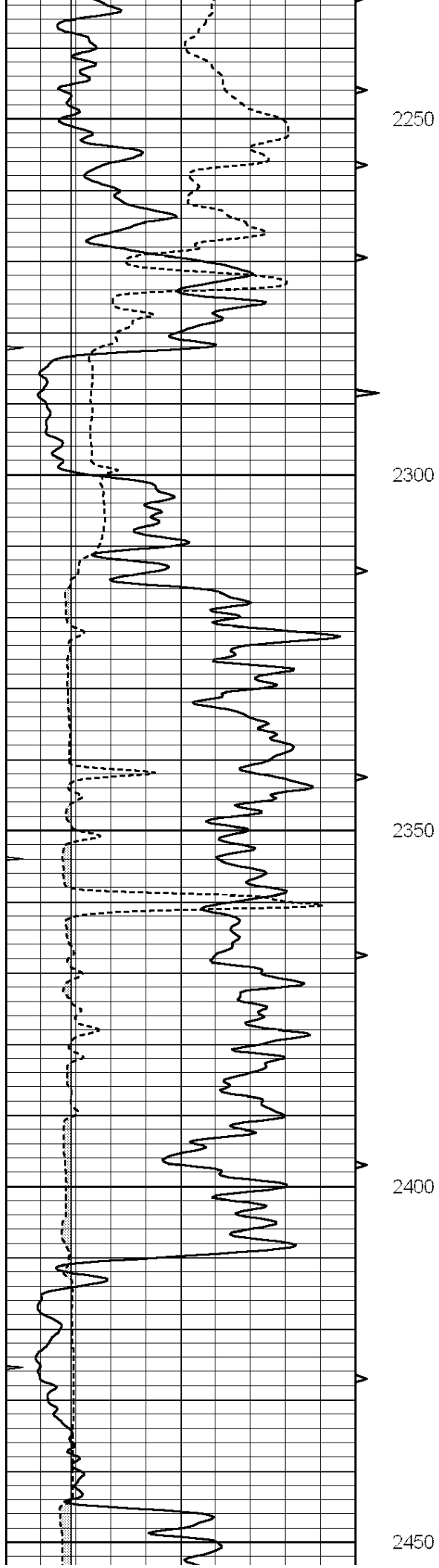
1700

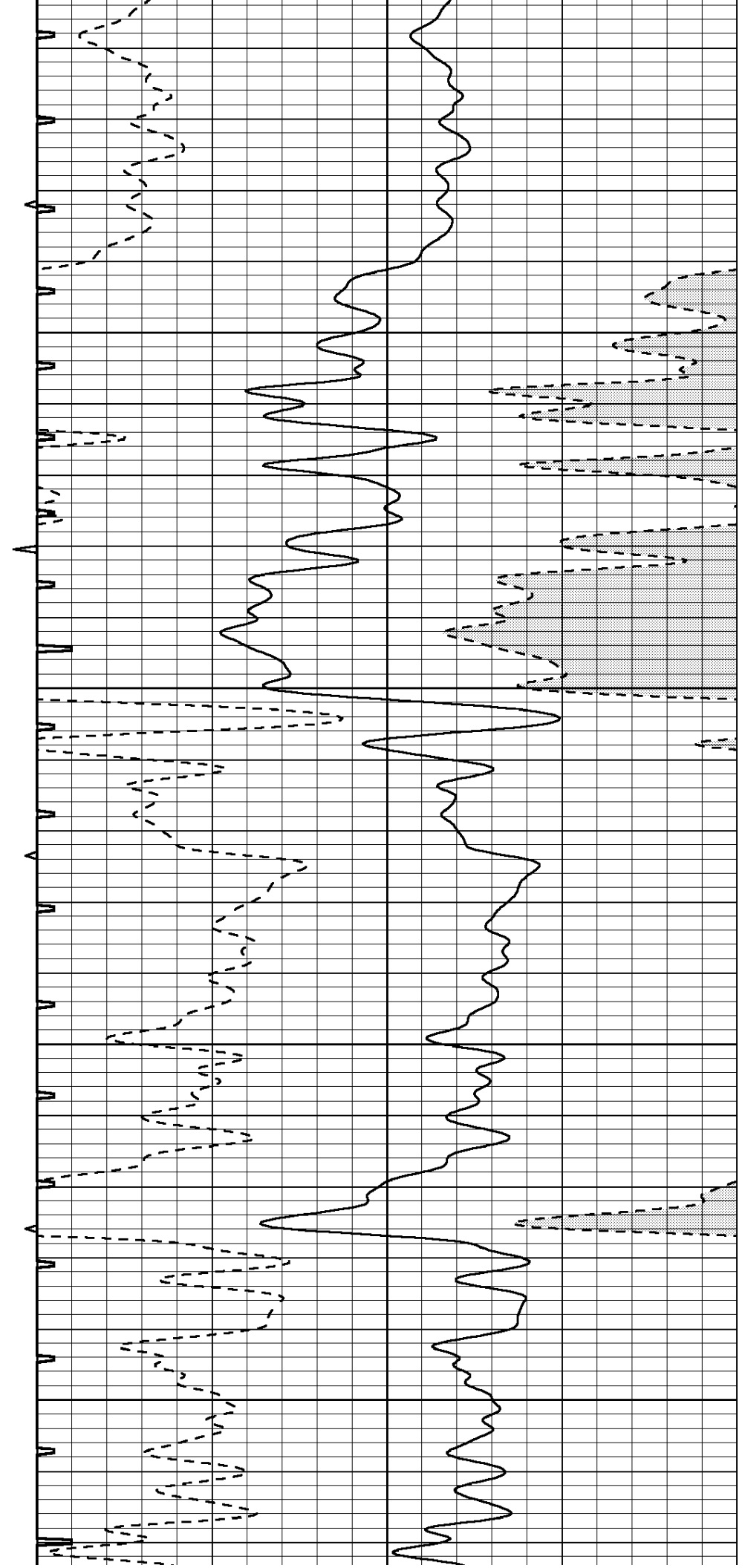
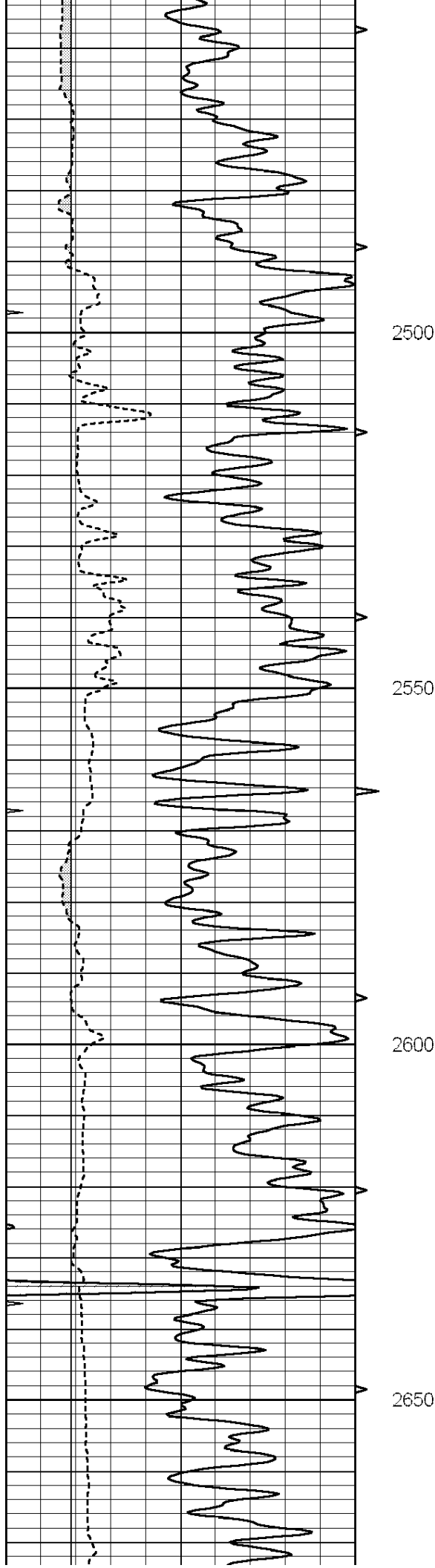
1750

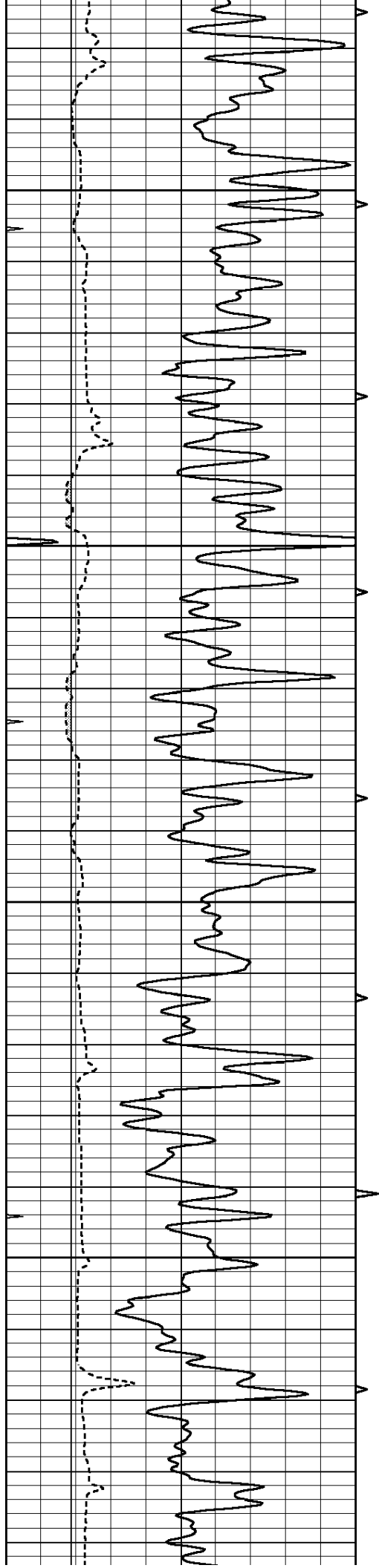










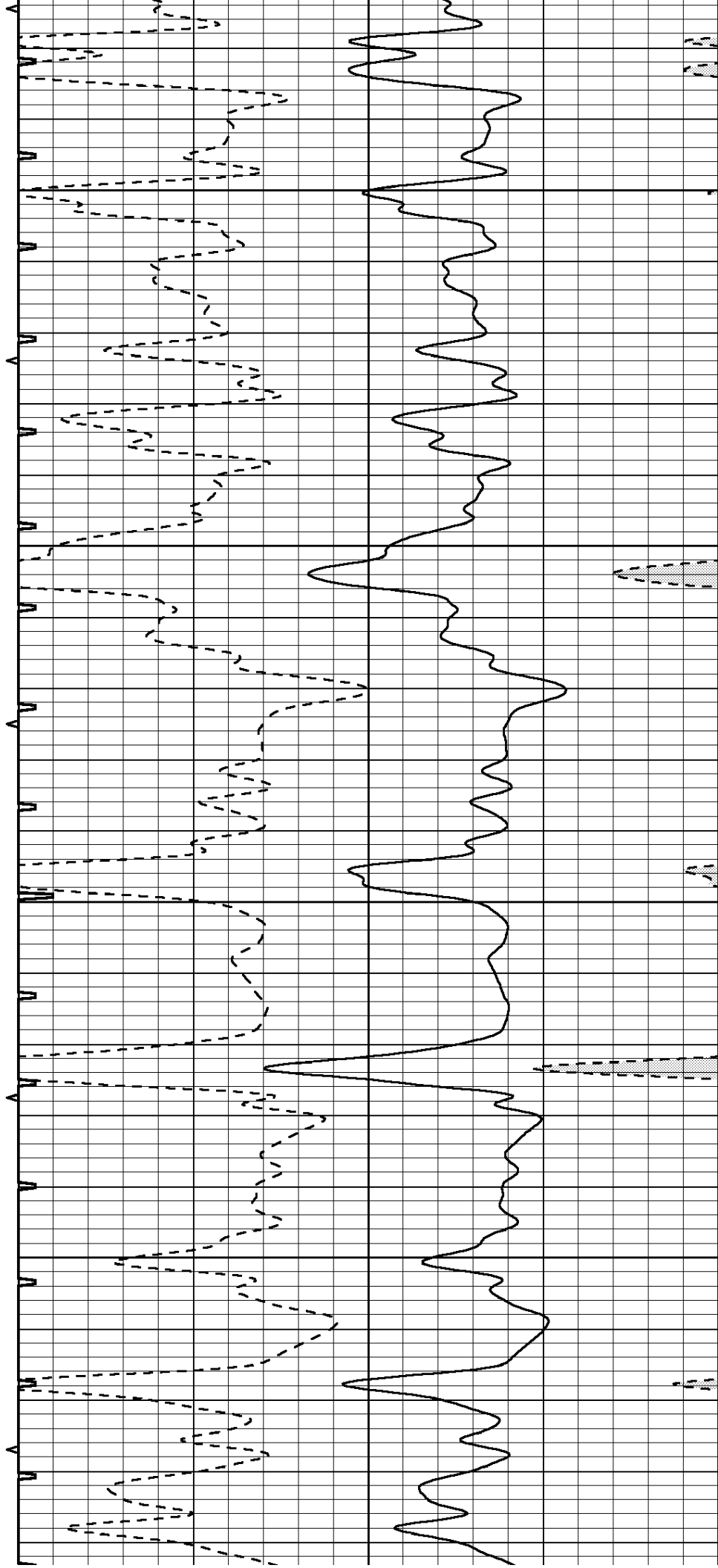


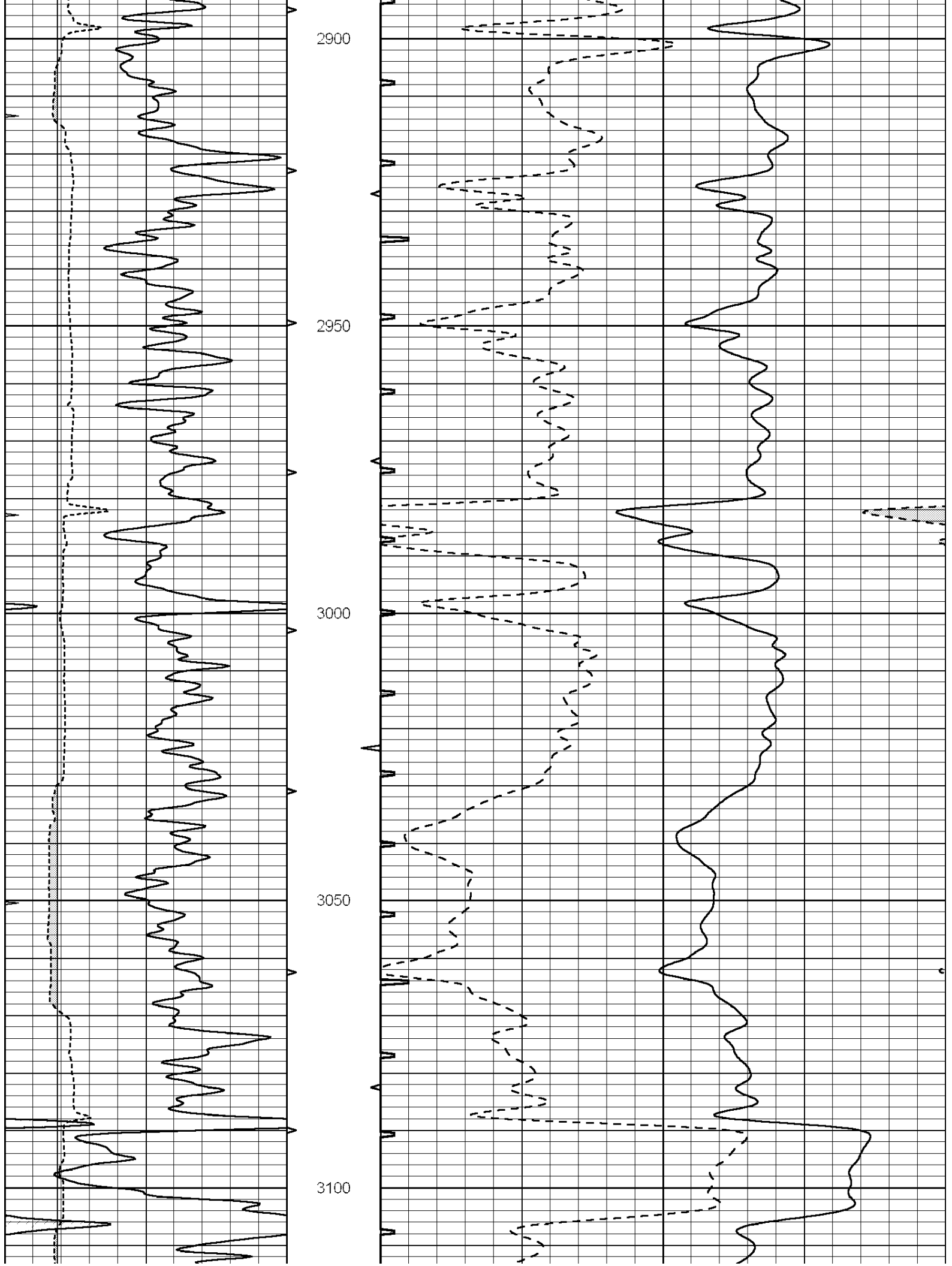
2700

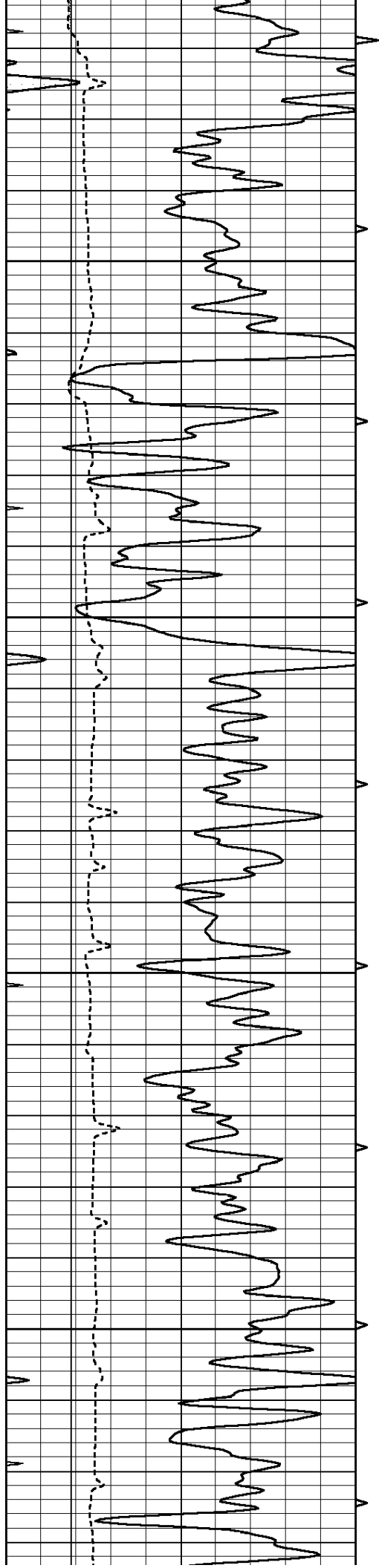
2750

2800

2850





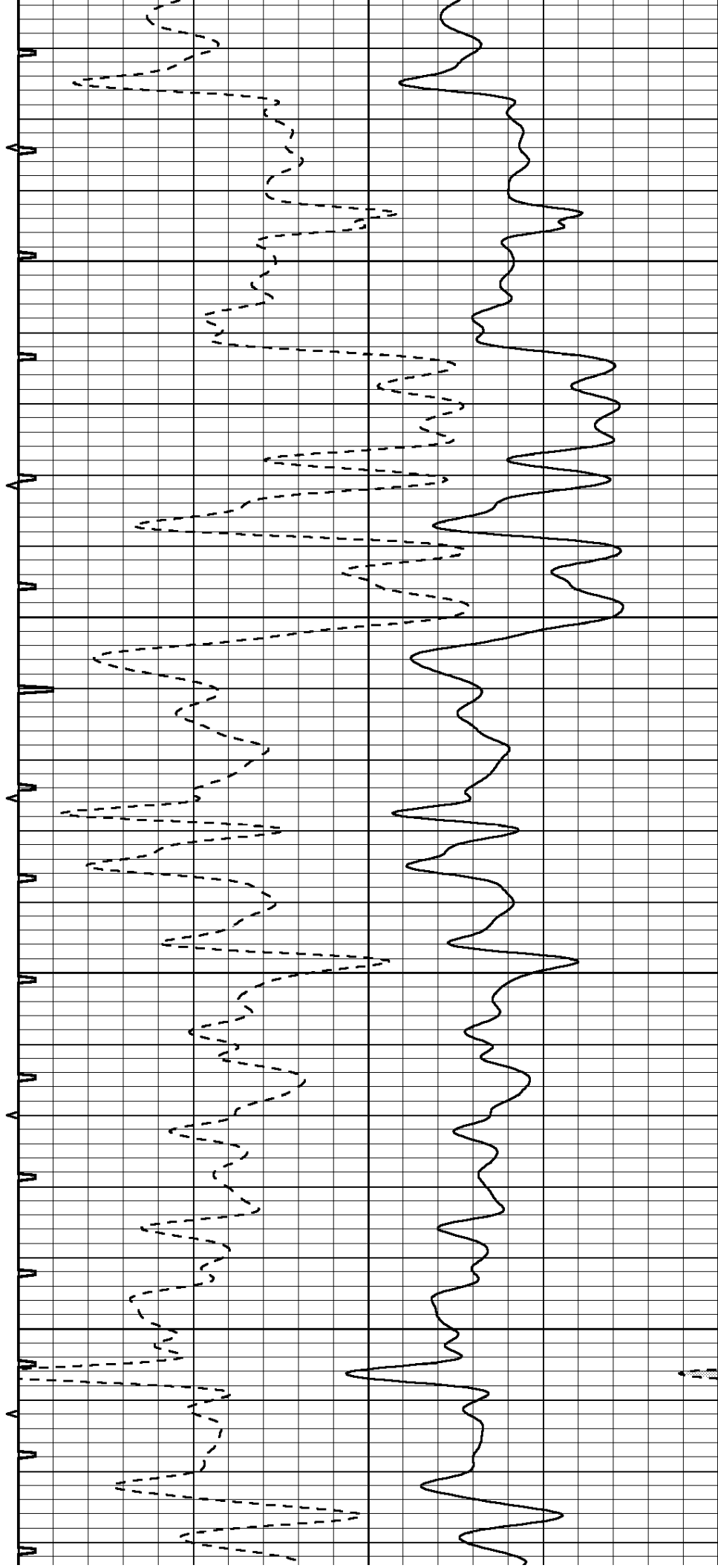


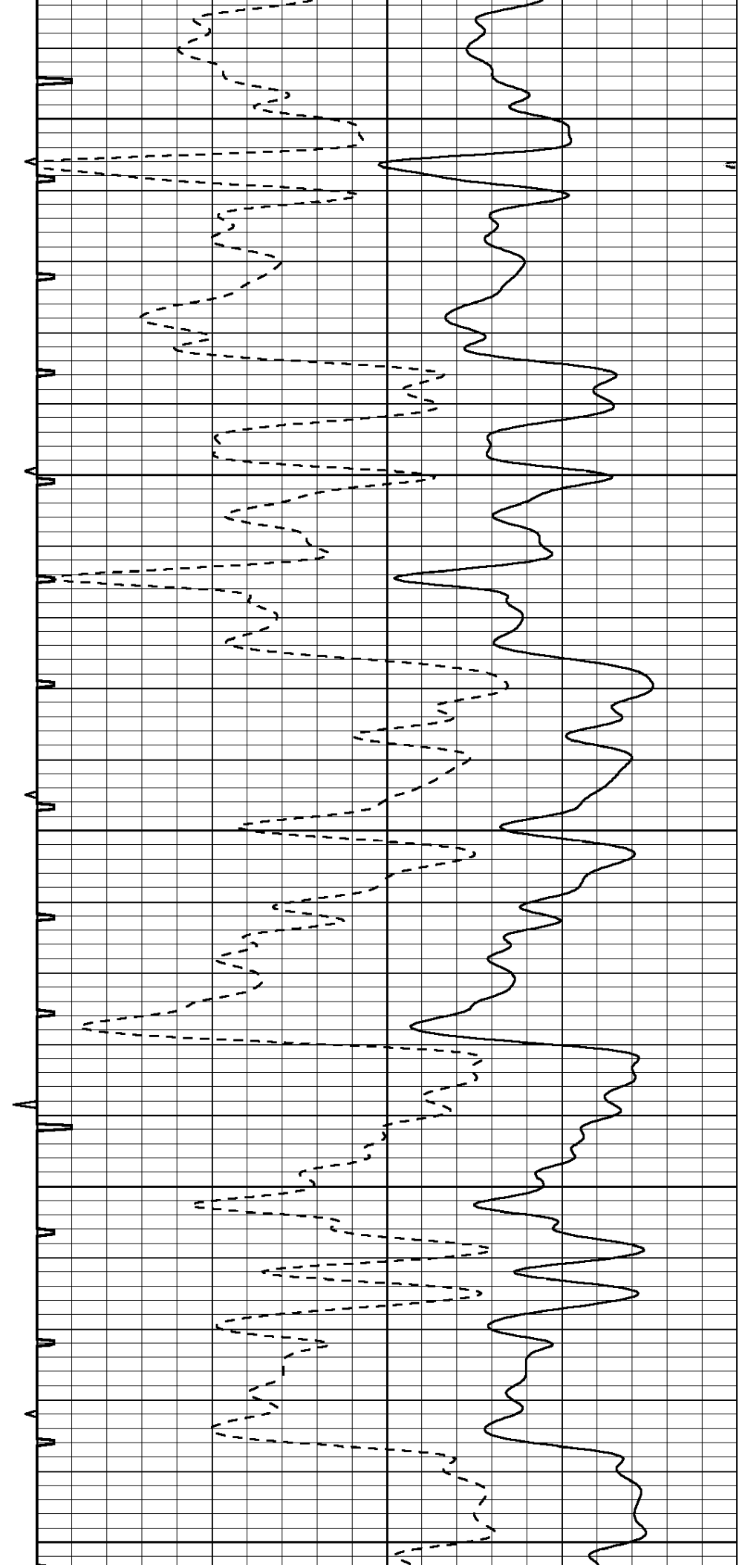
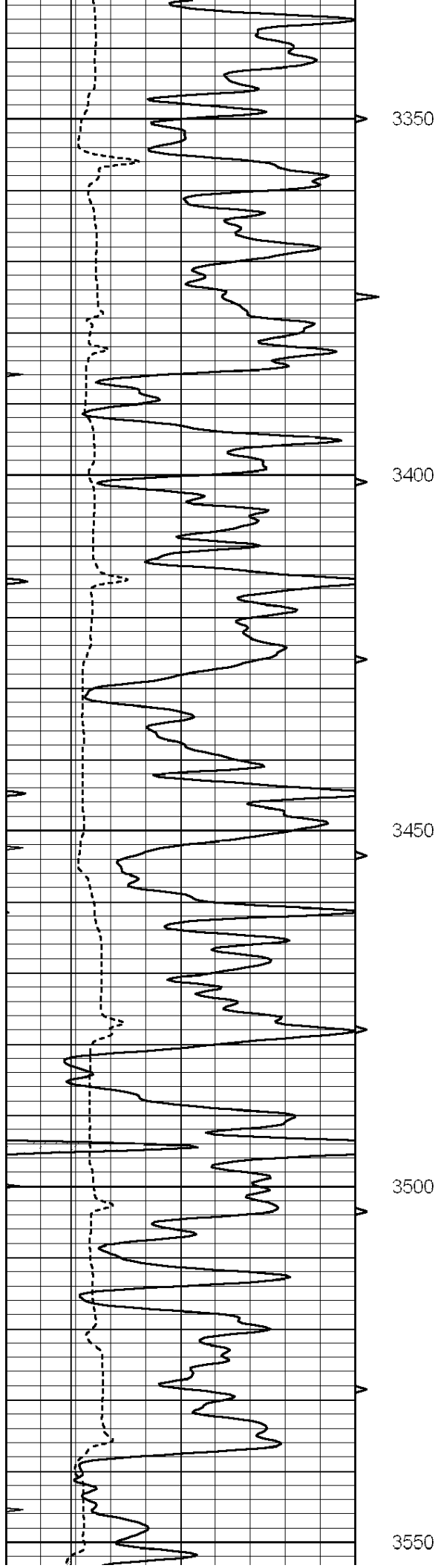
3150

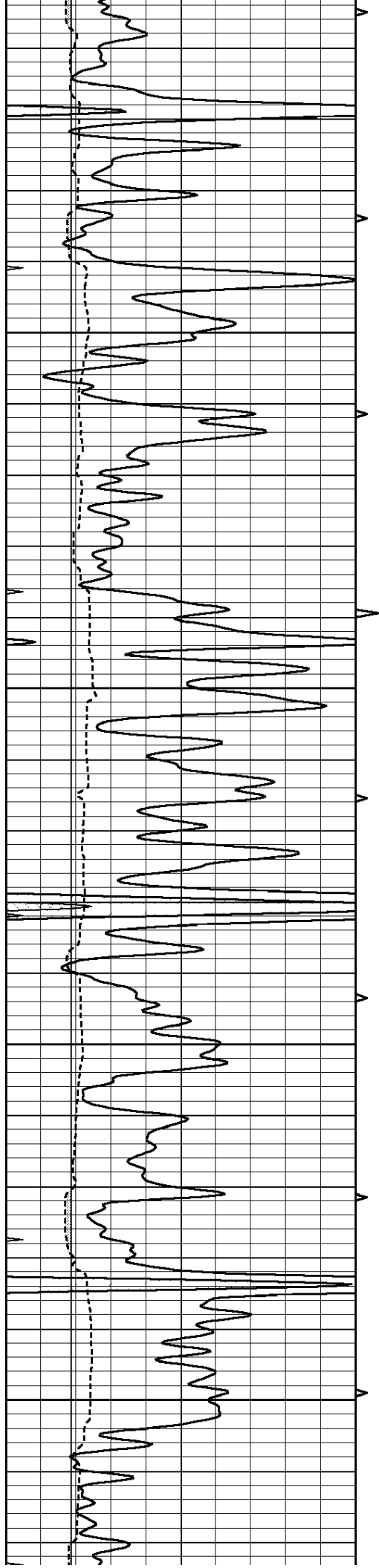
3200

3250

3300





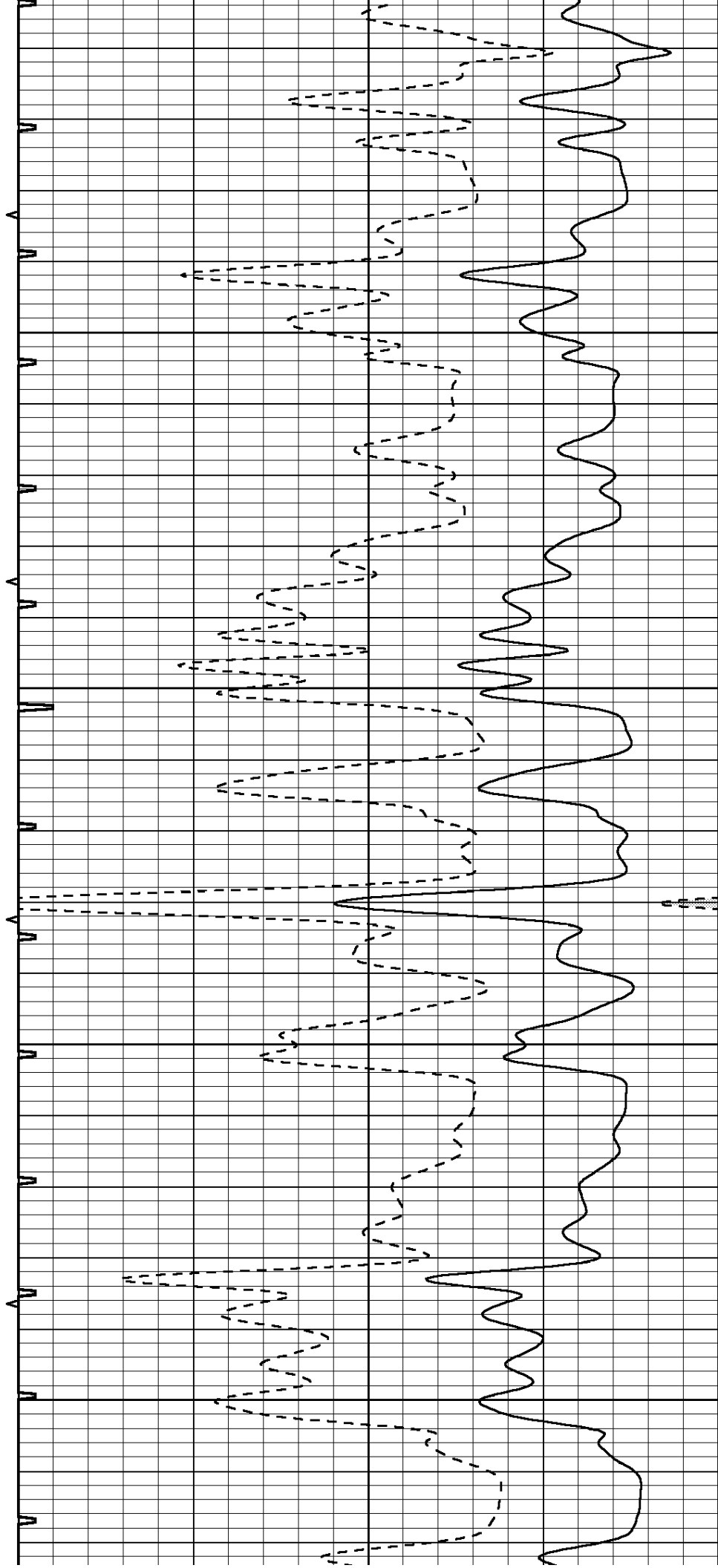


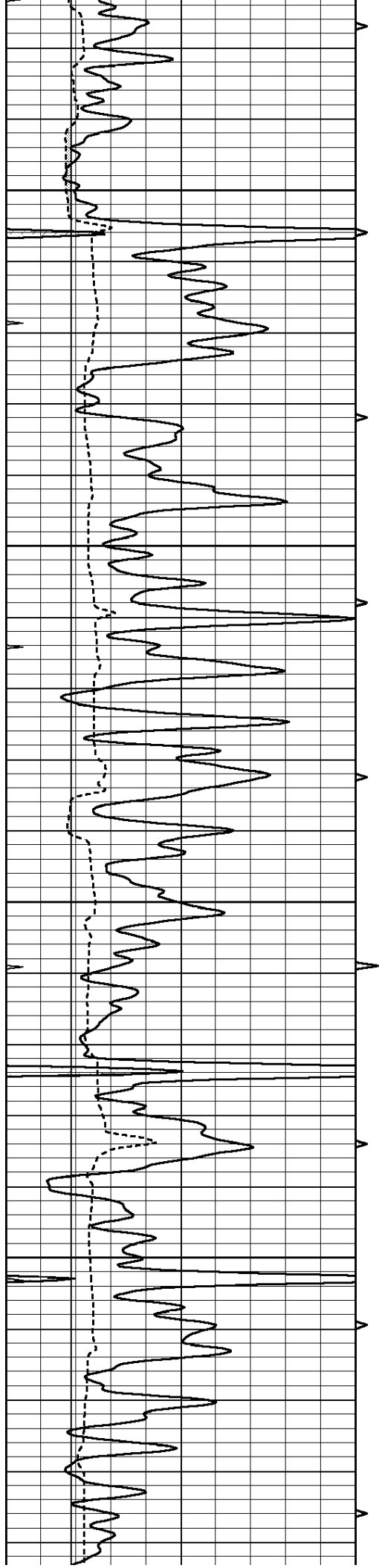
3600

3650

3700

3750



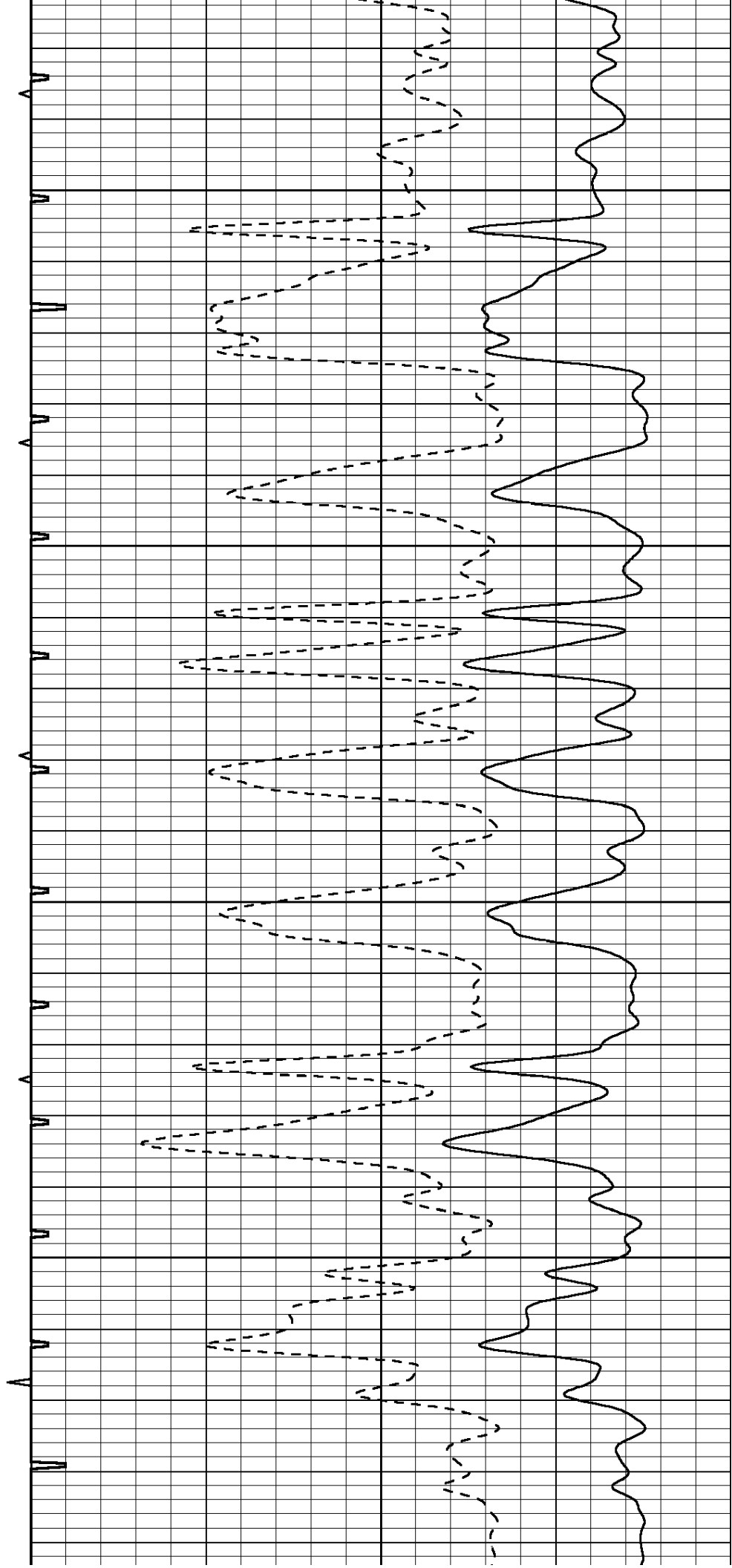


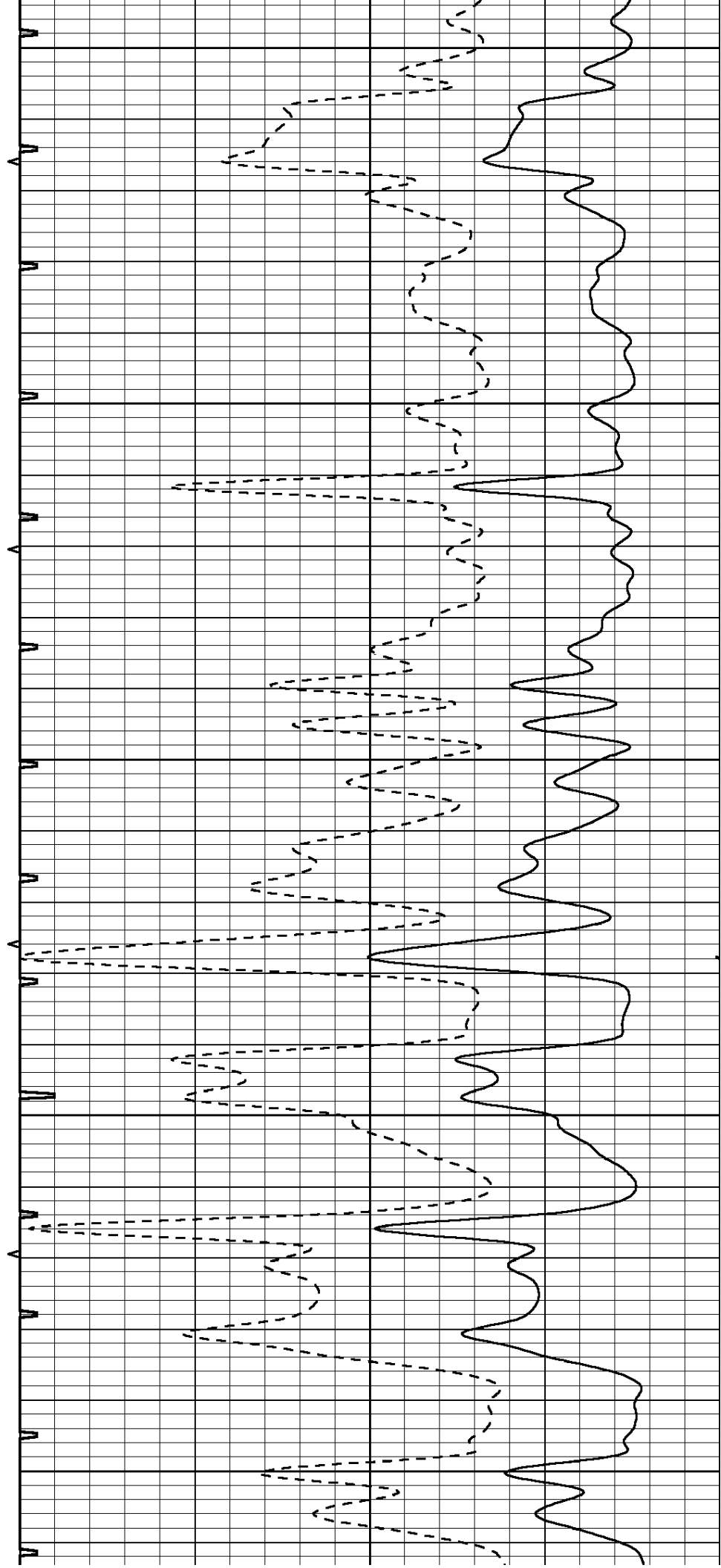
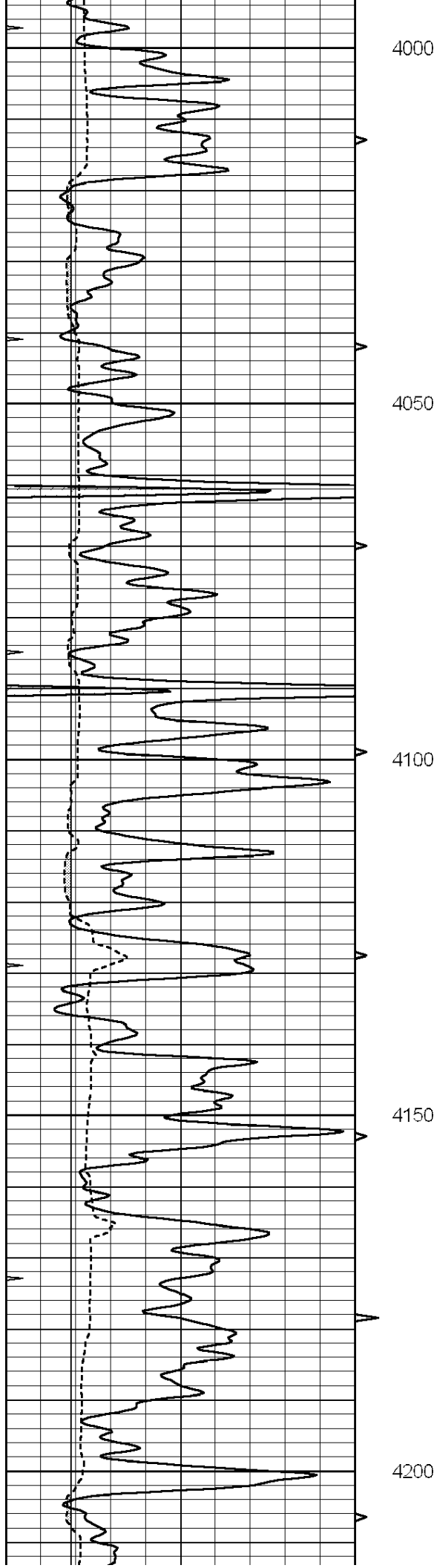
3800

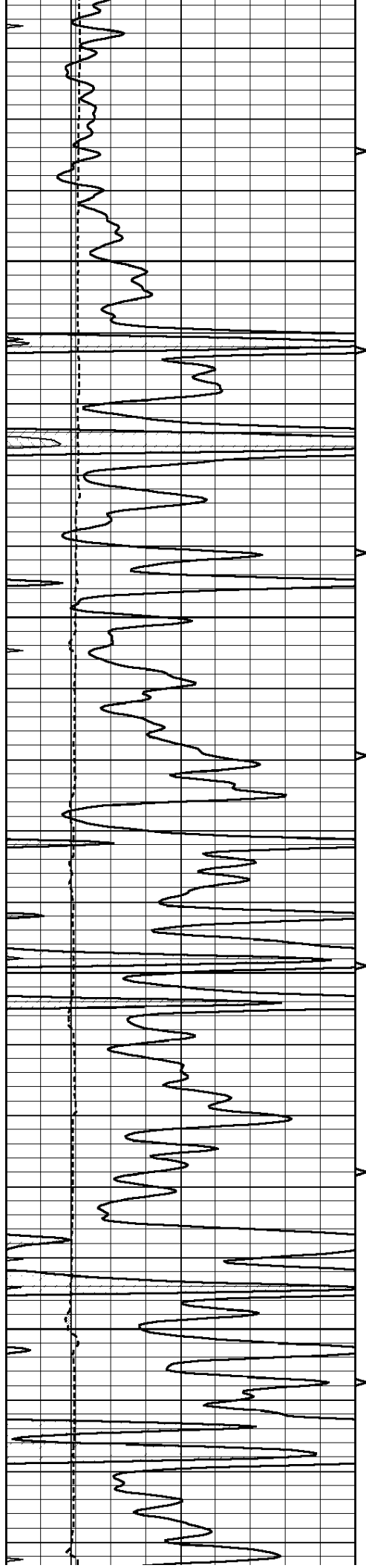
3850

3900

3950





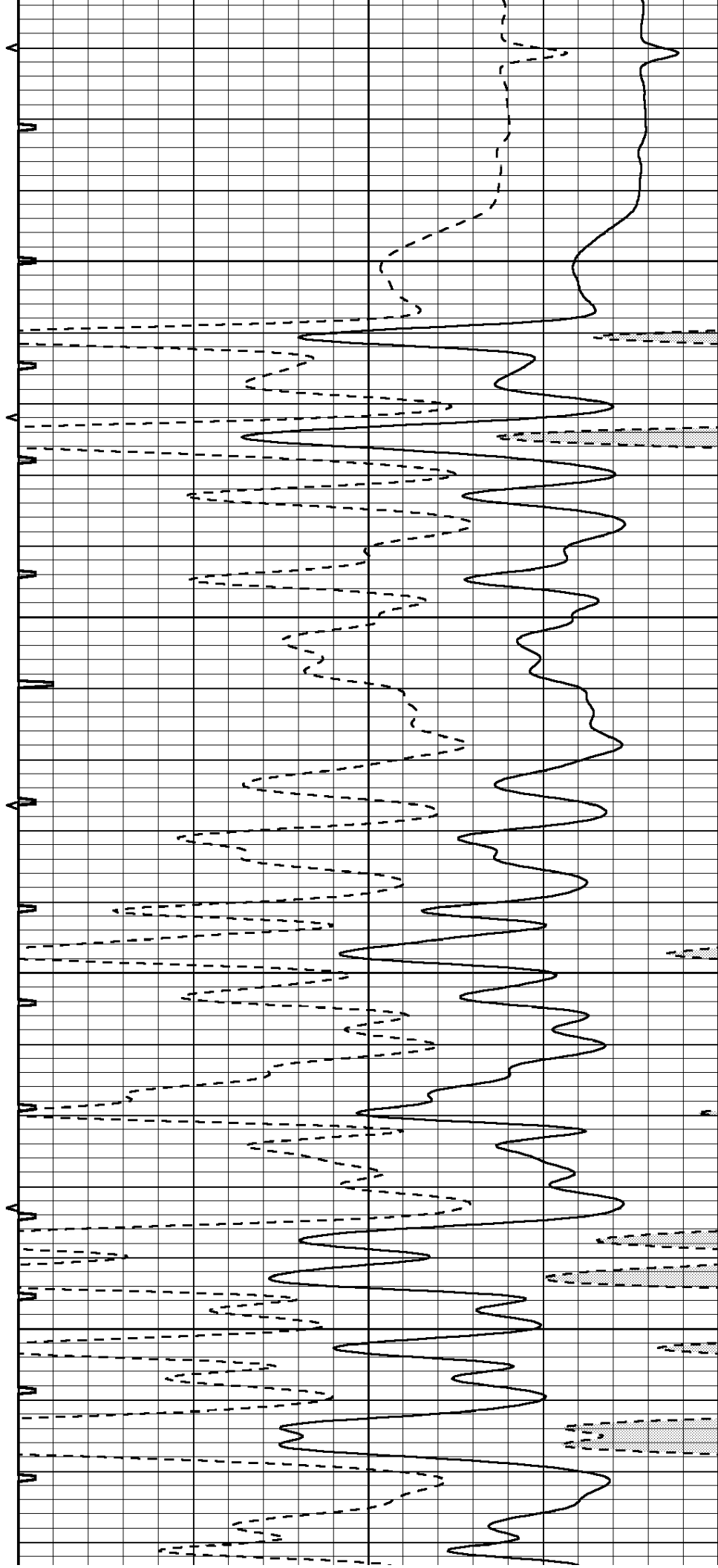


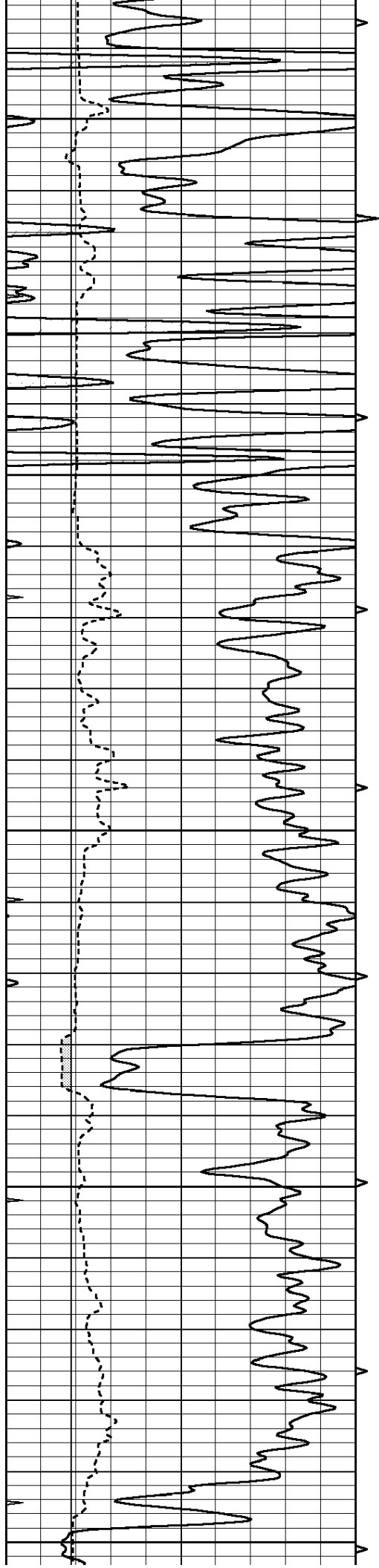
4250

4300

4350

4400





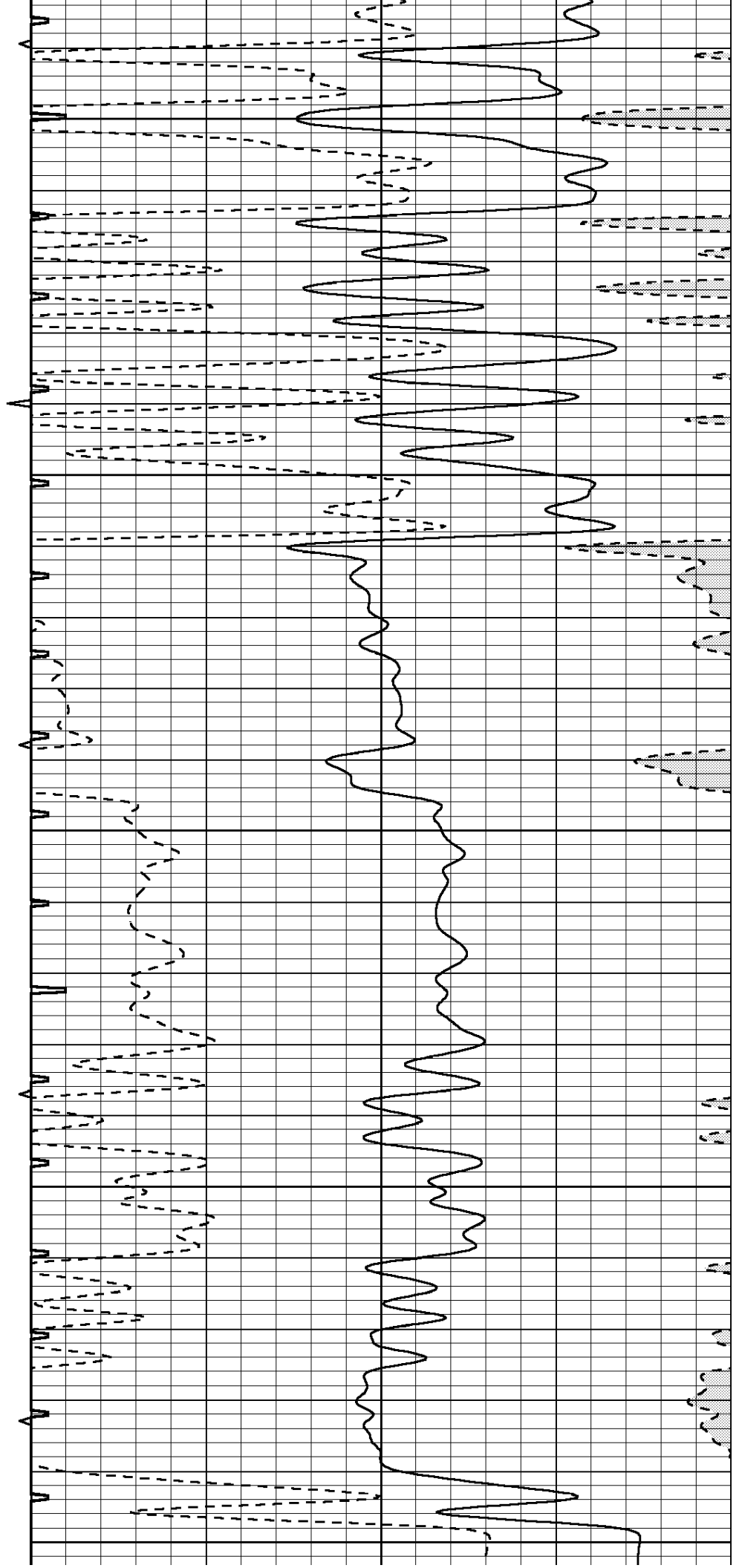
4450

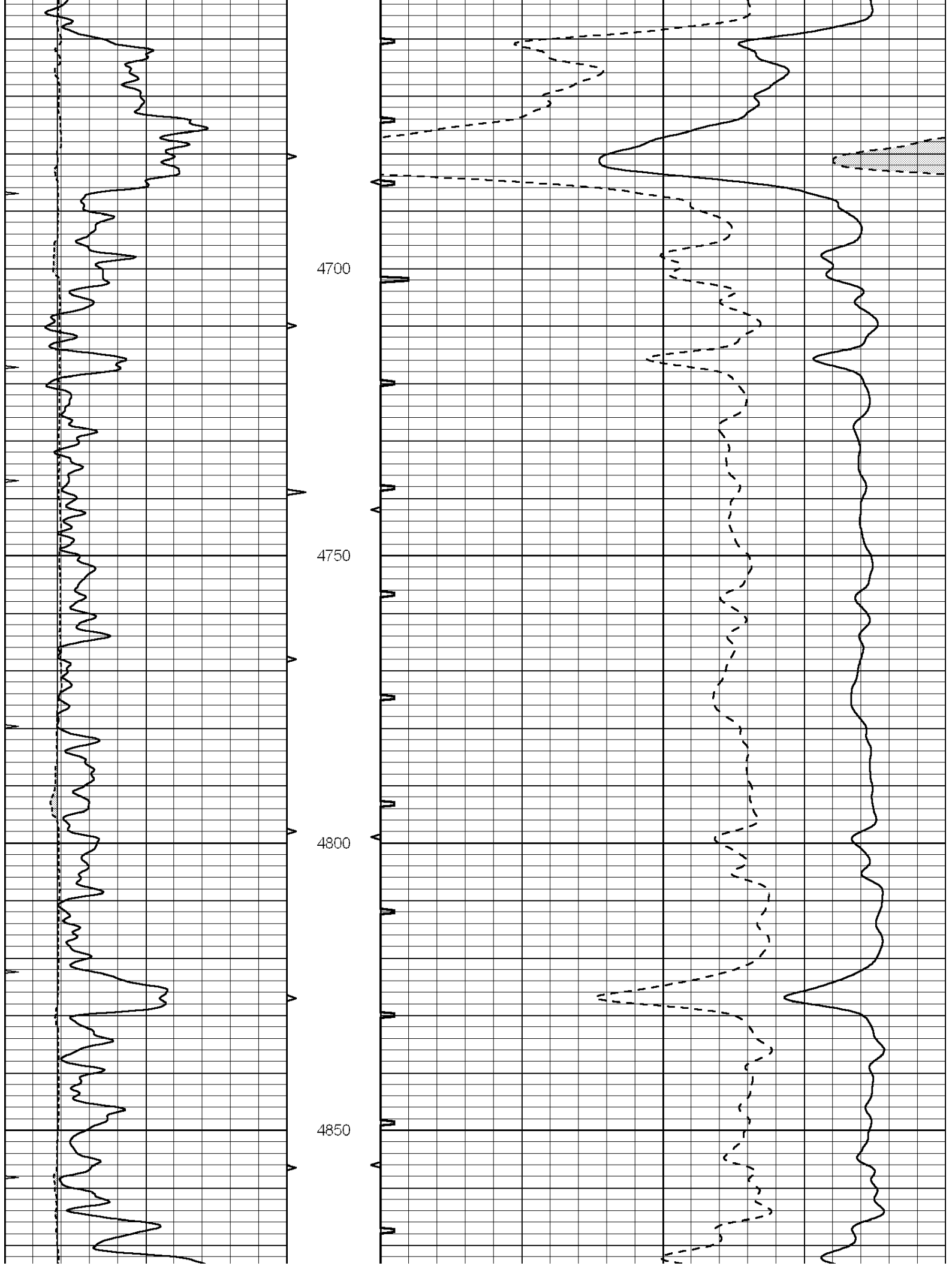
4500

4550

4600

4650









Hays,
Kansas

REPEAT SECTION

Database File: 006616ddn.db
Dataset Pathname: pass5.2
Presentation Format: slt
Dataset Creation: Fri Mar 18 20:38:39 2011 by Calc Open-Cased 090629
Charted by: Depth in Feet scaled 1:240

0	GAMMA RAY (GAPI)	150	ABHV	140	DELTA TIME (usec/ft)		40	
6	CALIPER (in)	16	10 (ft3)	0	30	SONIC POROSITY (pu)		-10

0	MINMK	20	TBHV	0	ITT (msec)		20	
			0 (ft3)	10				

