



**SUPERIOR**  
Black Lick, Pa.  
Mercer, Pa.  
Wooster, Ohio  
Cleveland, Ok.

**GAMMA RAY C.C.L.**  
**CEMENT BOND V.D.L.**

Company HARSH INTERNATIONAL		Well HARSH 32-6		Field EATON		County WELD		State COLORADO	
Company HARSH INTERNATIONAL		Well HARSH 32-6		Field EATON		County WELD		State COLORADO	
Location:		AP1 #: 05-123-29126-00		Other Services					
Permanent Datum		GL		Elevation		4800			
Log Measured From		KB		Elevation		4814			
Drilling Measured From		KB		Elevation		4813			
SEC 6		TWP 6N		RGE 65W					
Date		OCT-10-09		Elevation		4800			
Run Number		ONE		Elevation		4800			
Depth Driller		7355		Elevation		4800			
Depth Logger		7296		Elevation		4800			
Bottom Logged Interval		7295		Elevation		4800			
Top Log Interval		2930		Elevation		4800			
Open Hole Size		7-7/8		Elevation		4800			
Type Fluid		WATER		Elevation		4800			
Density / Viscosity		N/A		Elevation		4800			
Max. Recorded Temp.		242° F		Elevation		4800			
Estimated Cement Top		3105		Elevation		4800			
Time Well Ready		MAST UNIT		Elevation		4800			
Time Logger on Bottom		1-11/16 #2		Elevation		4800			
Equipment Number		703		Elevation		4800			
Location		45		Elevation		4800			
Recorded By		LEROY HOBBS		Elevation		4800			
Witnessed By		DON LIBHART		Elevation		4800			
Run Number		Bit		From		To		Size	
Casing Record		Size		Wgt/Ft		Top		Bottom	
Surface String		Size		Wgt/Ft		Top		Bottom	
Prot. String		Size		Wgt/Ft		Top		Bottom	
Production String		Size		Wgt/Ft		Top		Bottom	
Liner		Size		Wgt/Ft		Top		Bottom	

<<< Fold Here >>>

All interpretations are opinions based on inferences from electrical or other measurements and we cannot and do not guarantee the accuracy or correctness of any interpretation, and we shall not, except in the case of gross or willful negligence on our part, be liable or responsible for any loss, costs, damages, or expenses incurred or sustained by anyone resulting from any interpretation made by any of our officers, agents or employees. These interpretations are also subject to our general terms and conditions set out in our current Price Schedule.

Comments

THANK YOU FOR USING SUPERIOR WELL SERVICES.

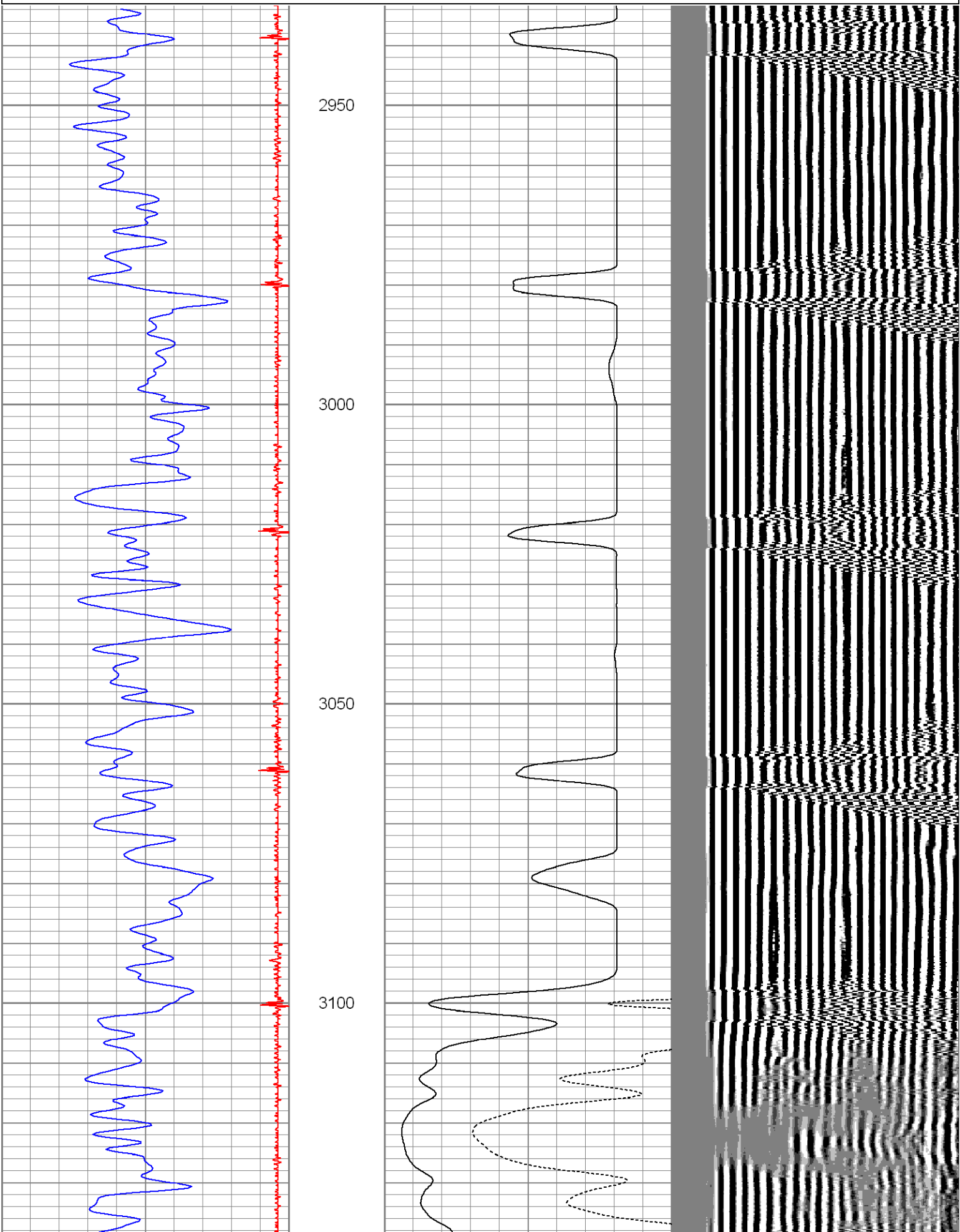
CORRECTED UP HOLE 4' TO PSI  
MIRCO LOG DATED  
OCTOBER 4, 2009.

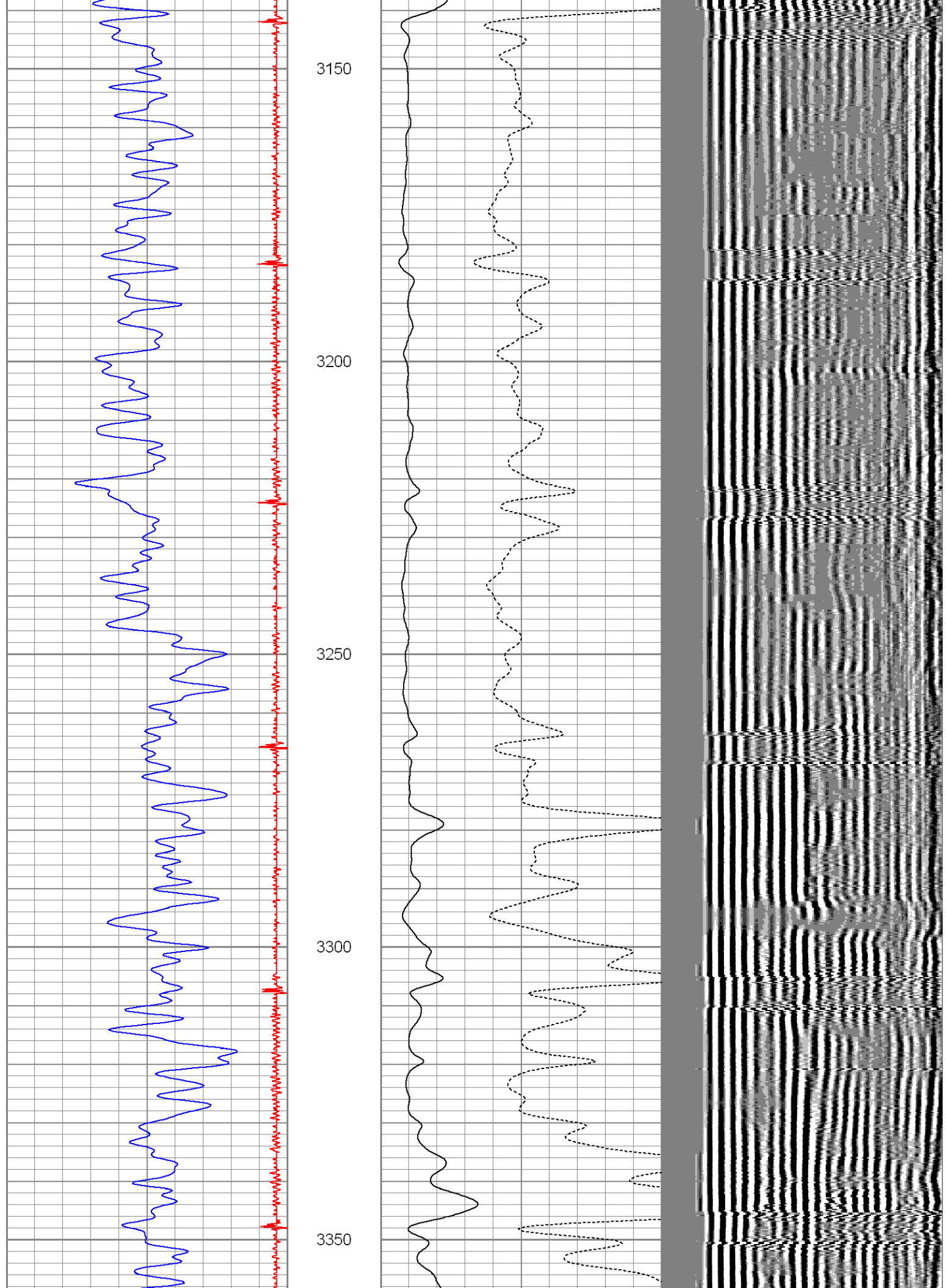
WCR 74 & WCR 39, WEST .3, SOUTH TO T.B., WEST, SOUTH INTO.

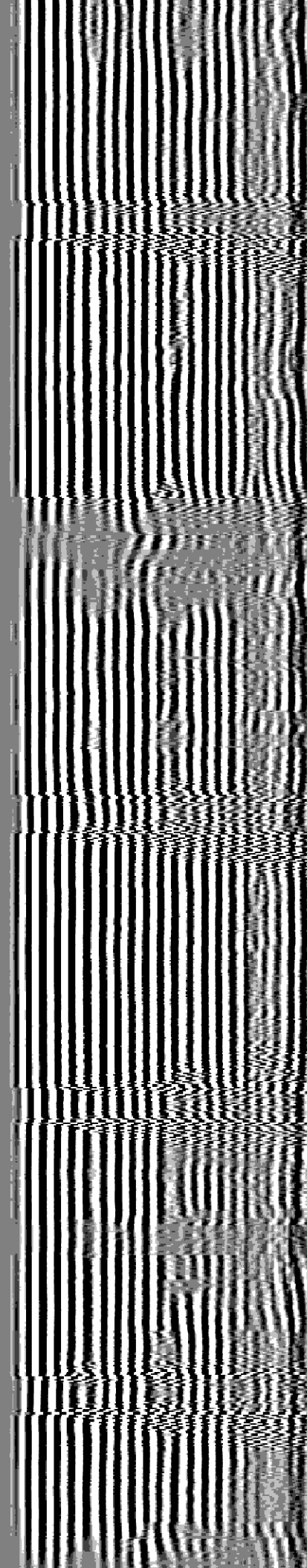
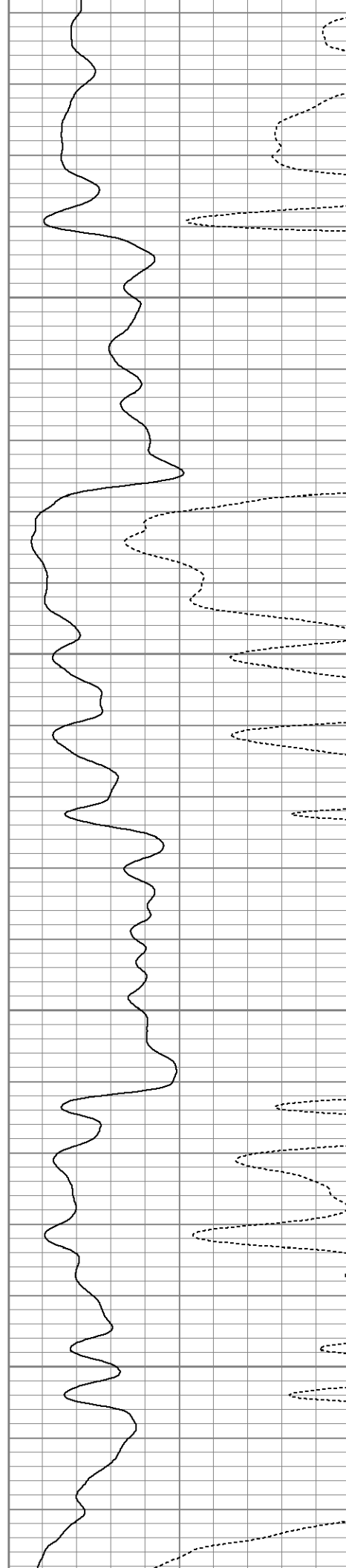
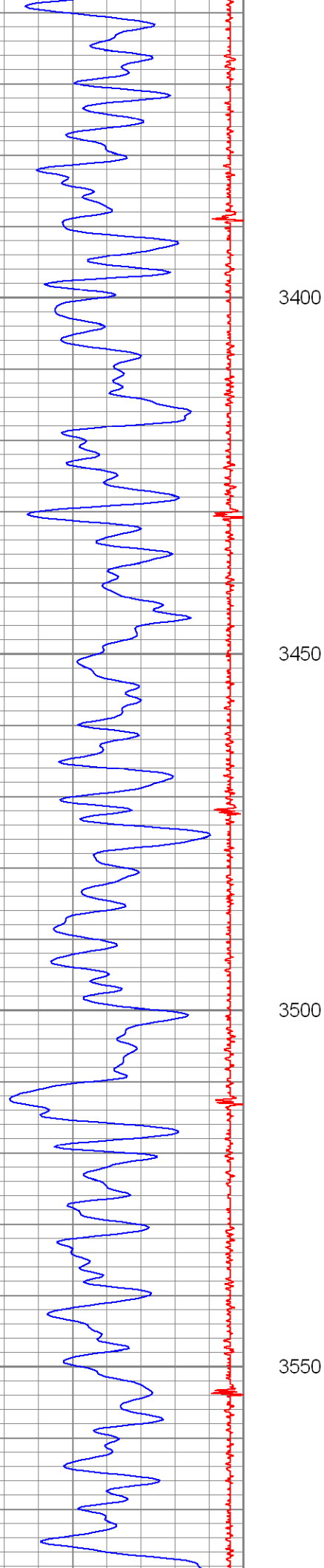
8	CCL	-0.3
30	Gamma Ray (GAPI)	130

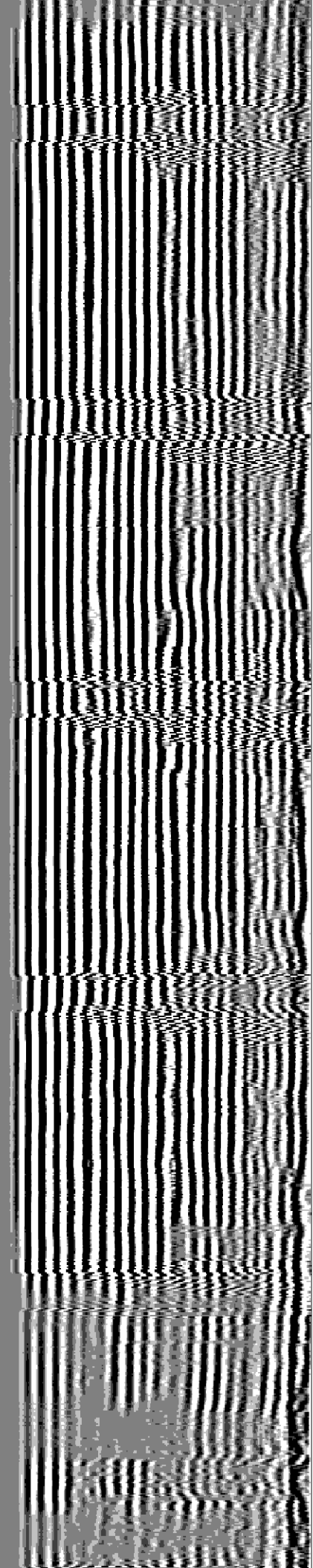
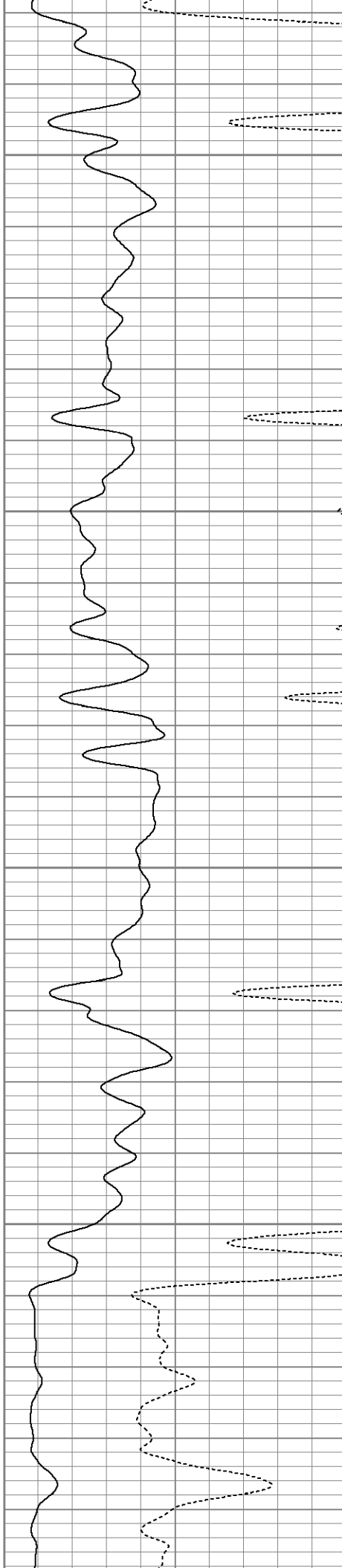
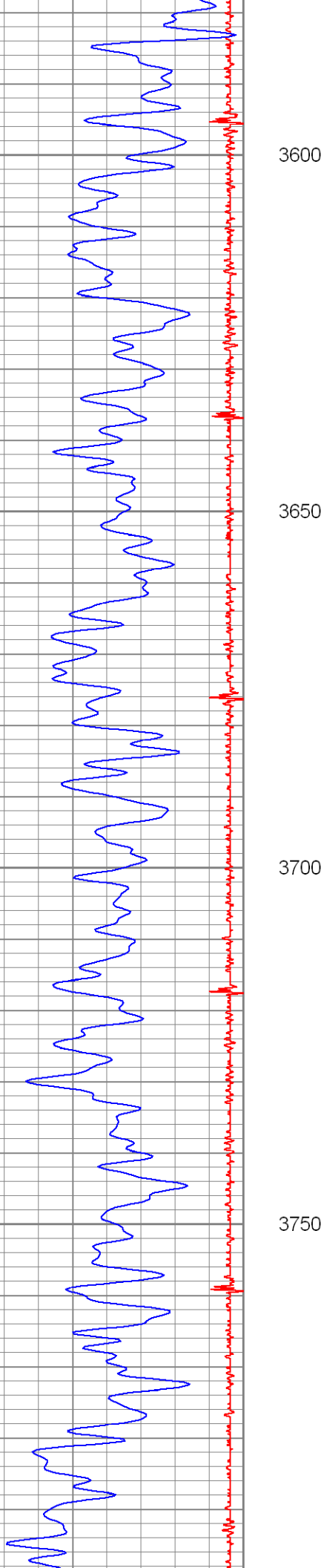
0	Amplified Amplitude (mV)	20	200
0	Amplitude (mV)	100	

V D L 1200

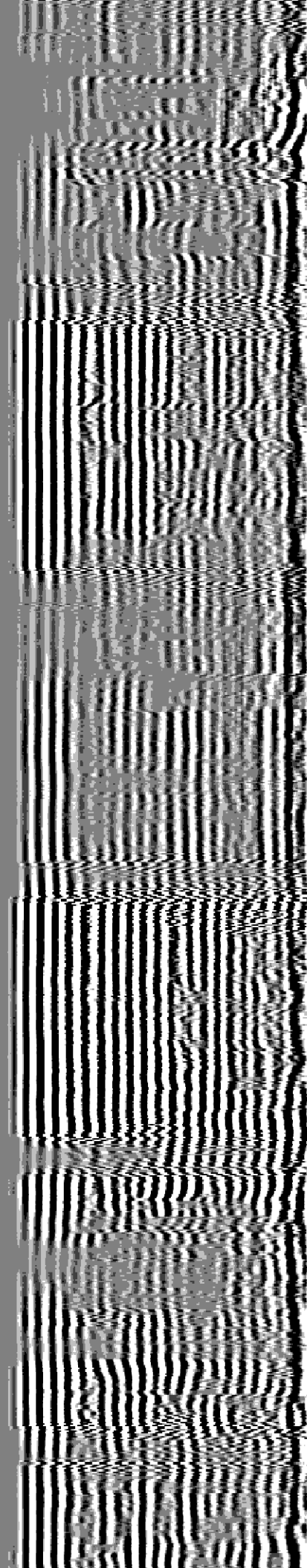
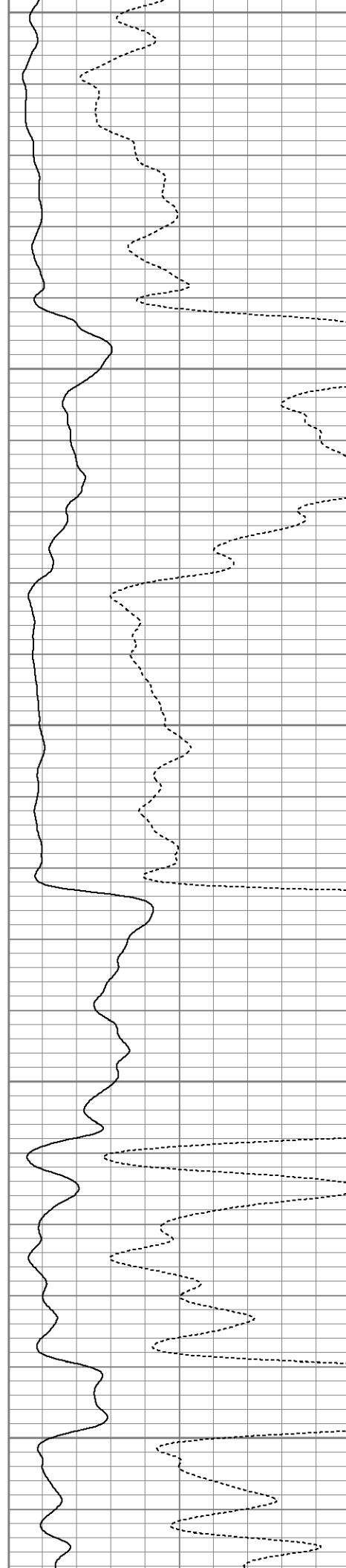
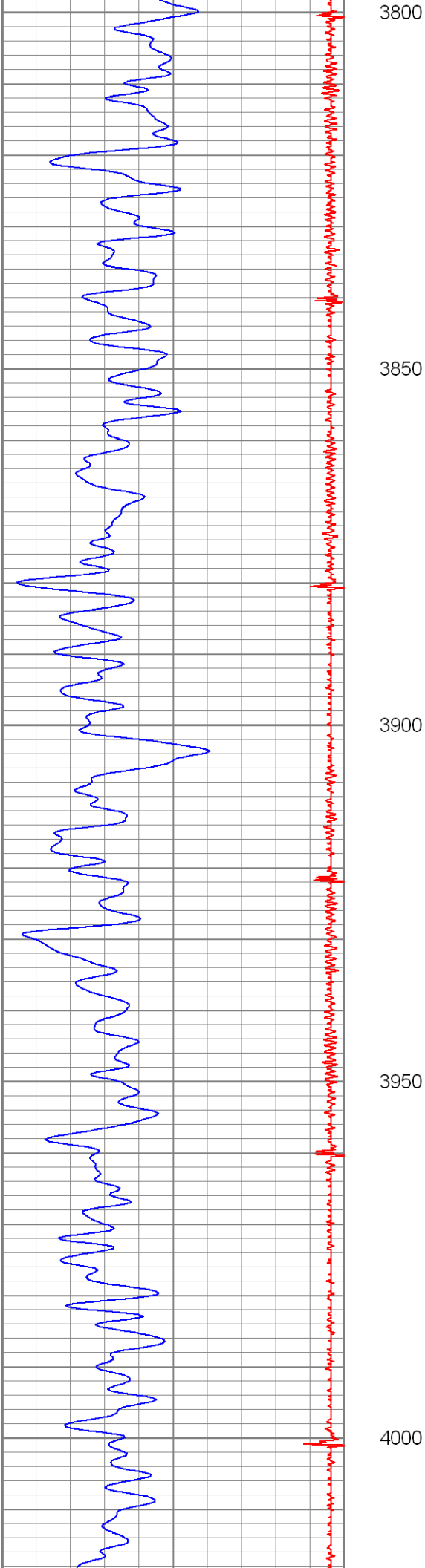


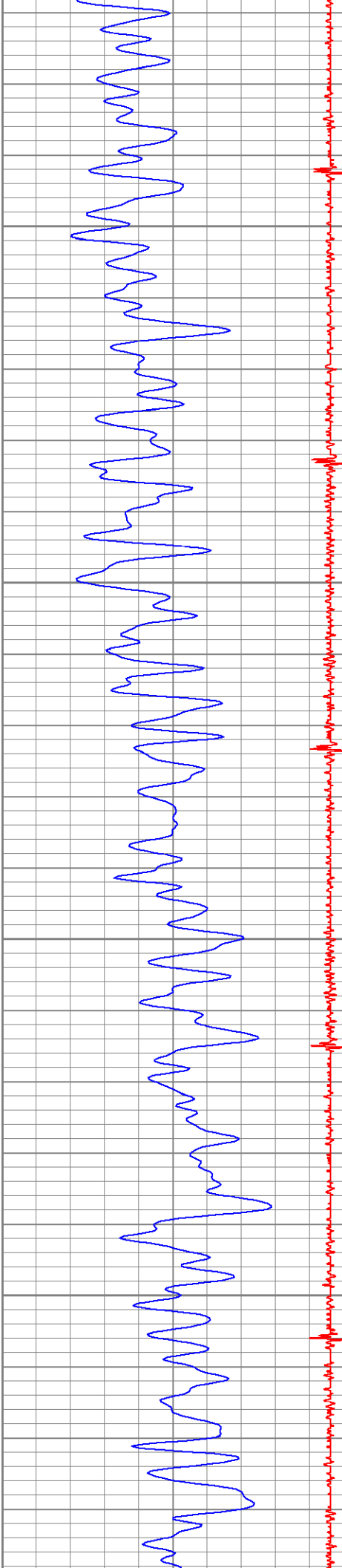










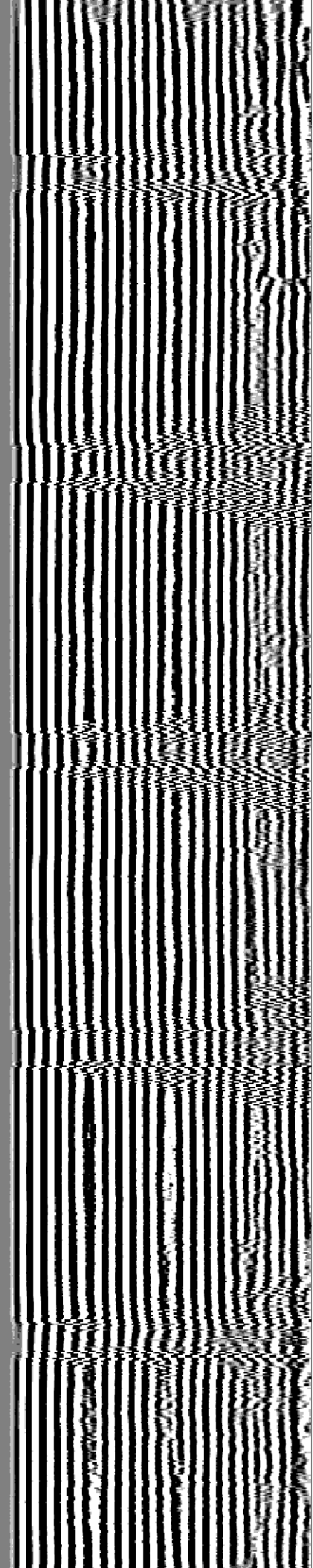
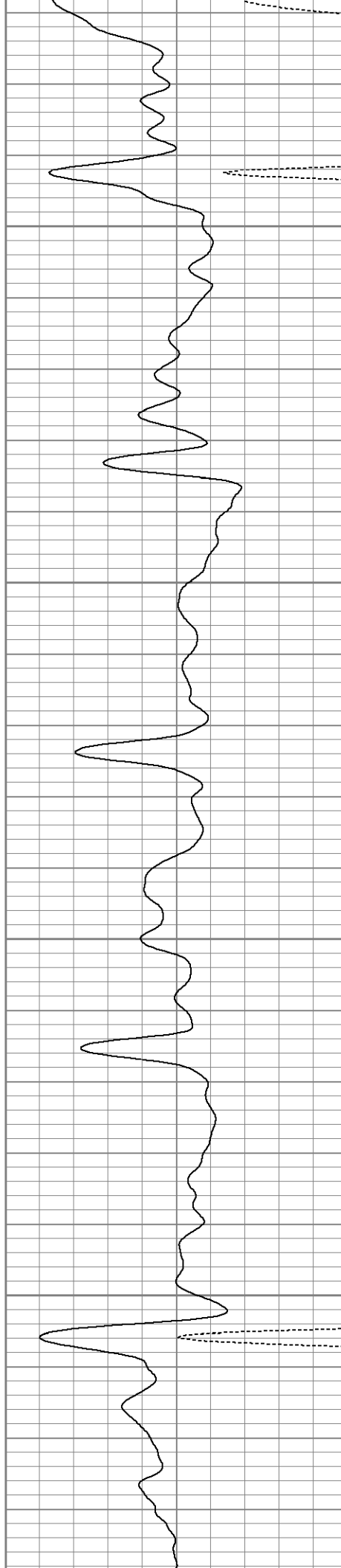


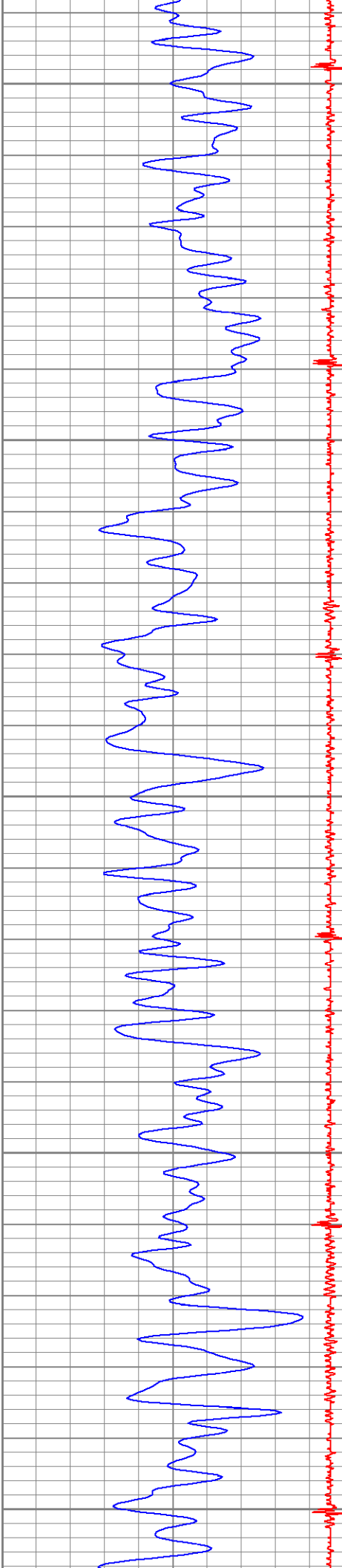
4050

4100

4150

4200





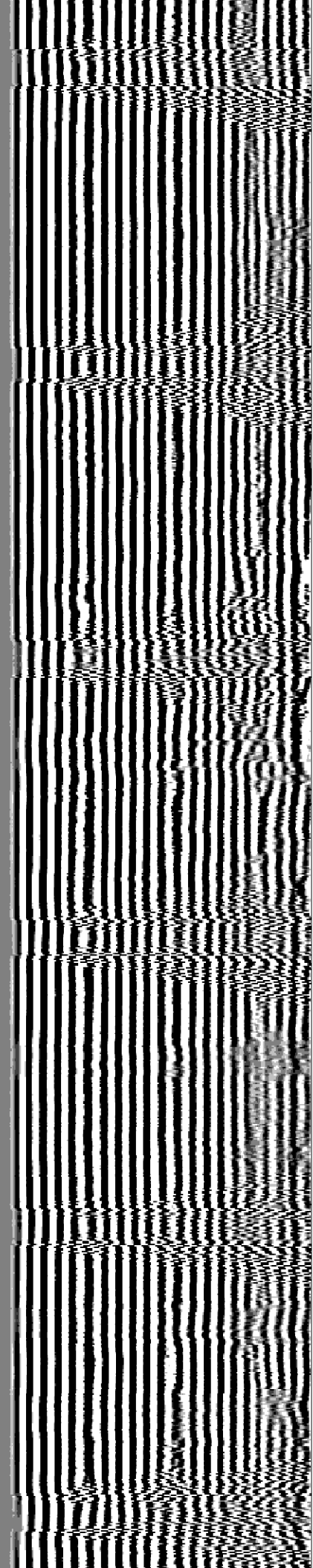
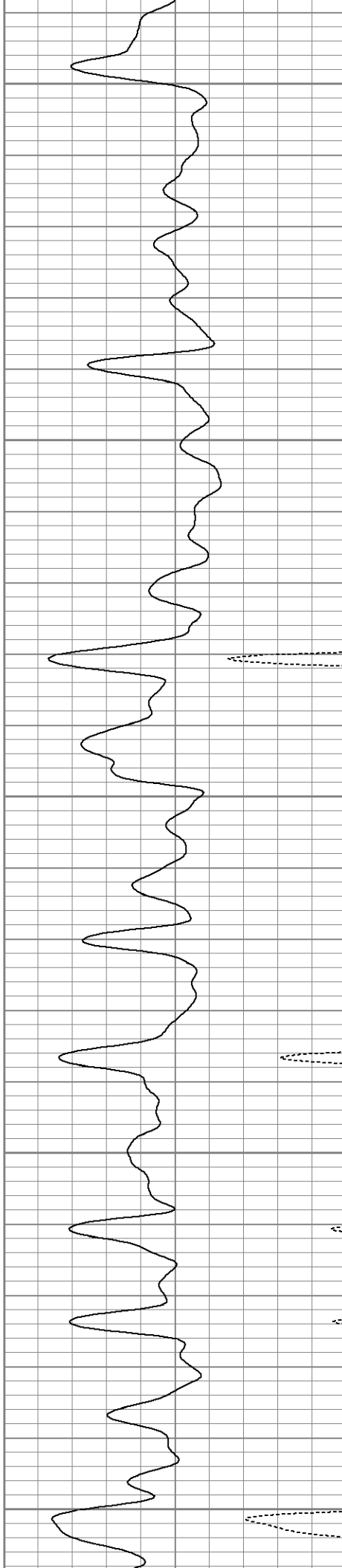
4250

4300

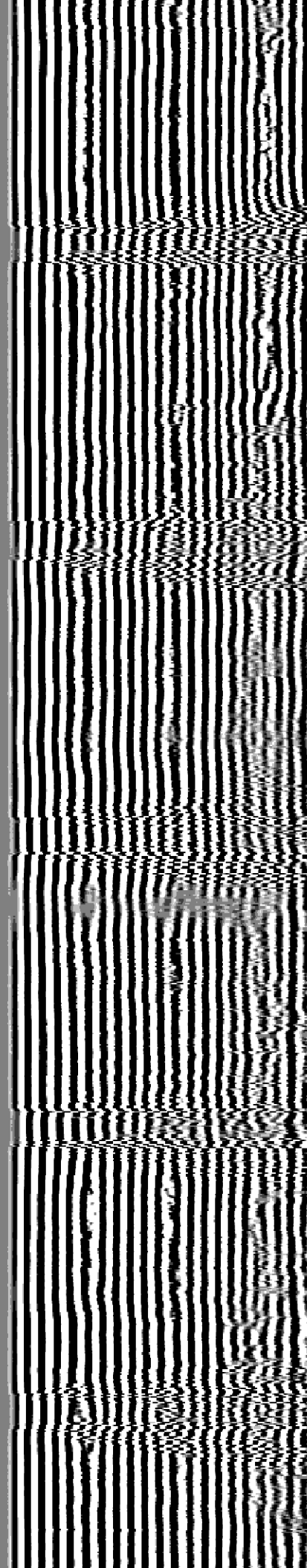
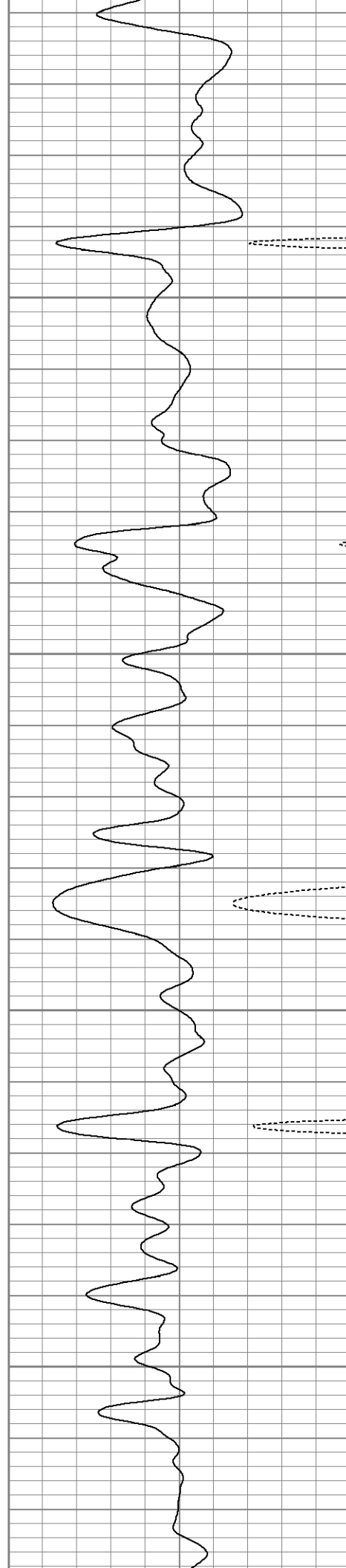
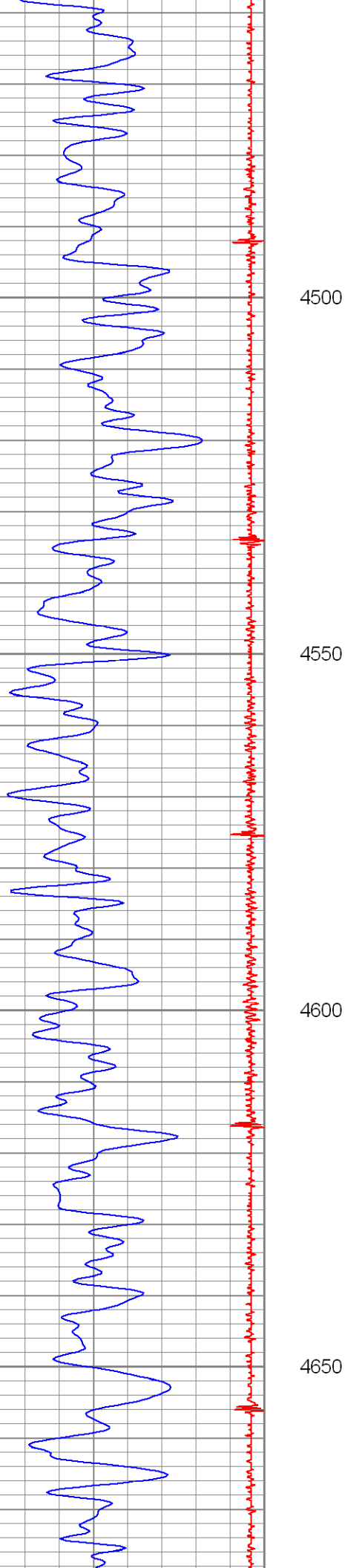
4350

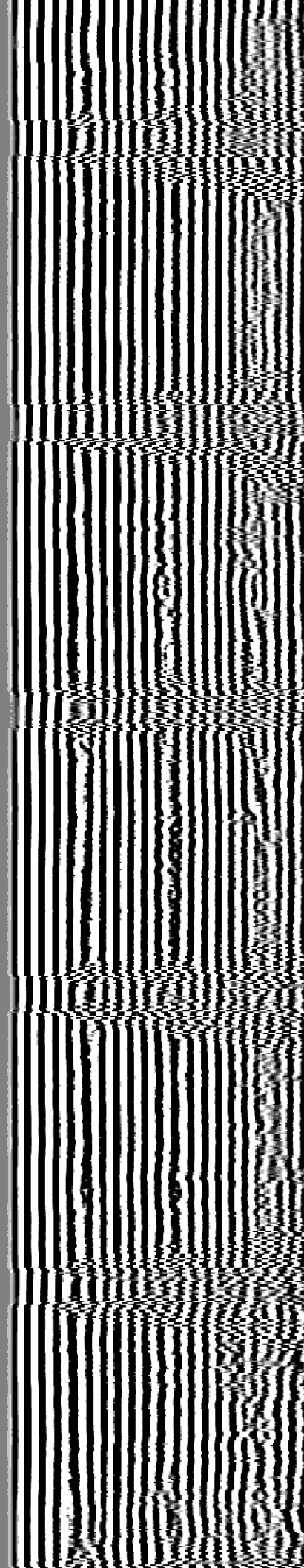
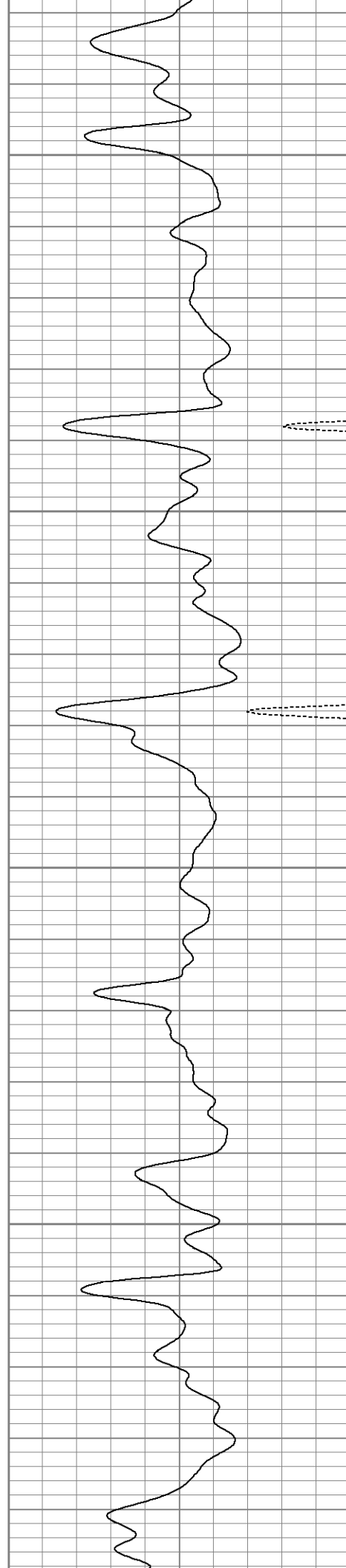
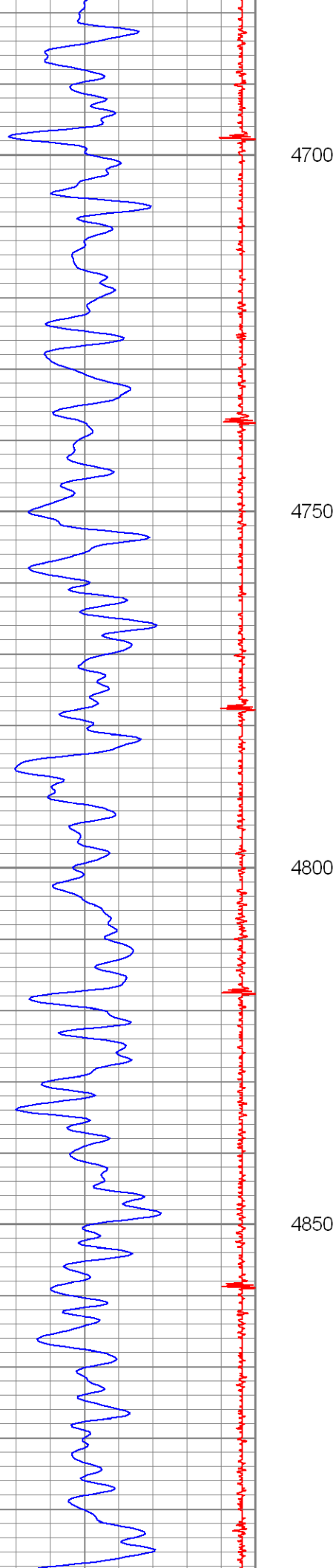
4400

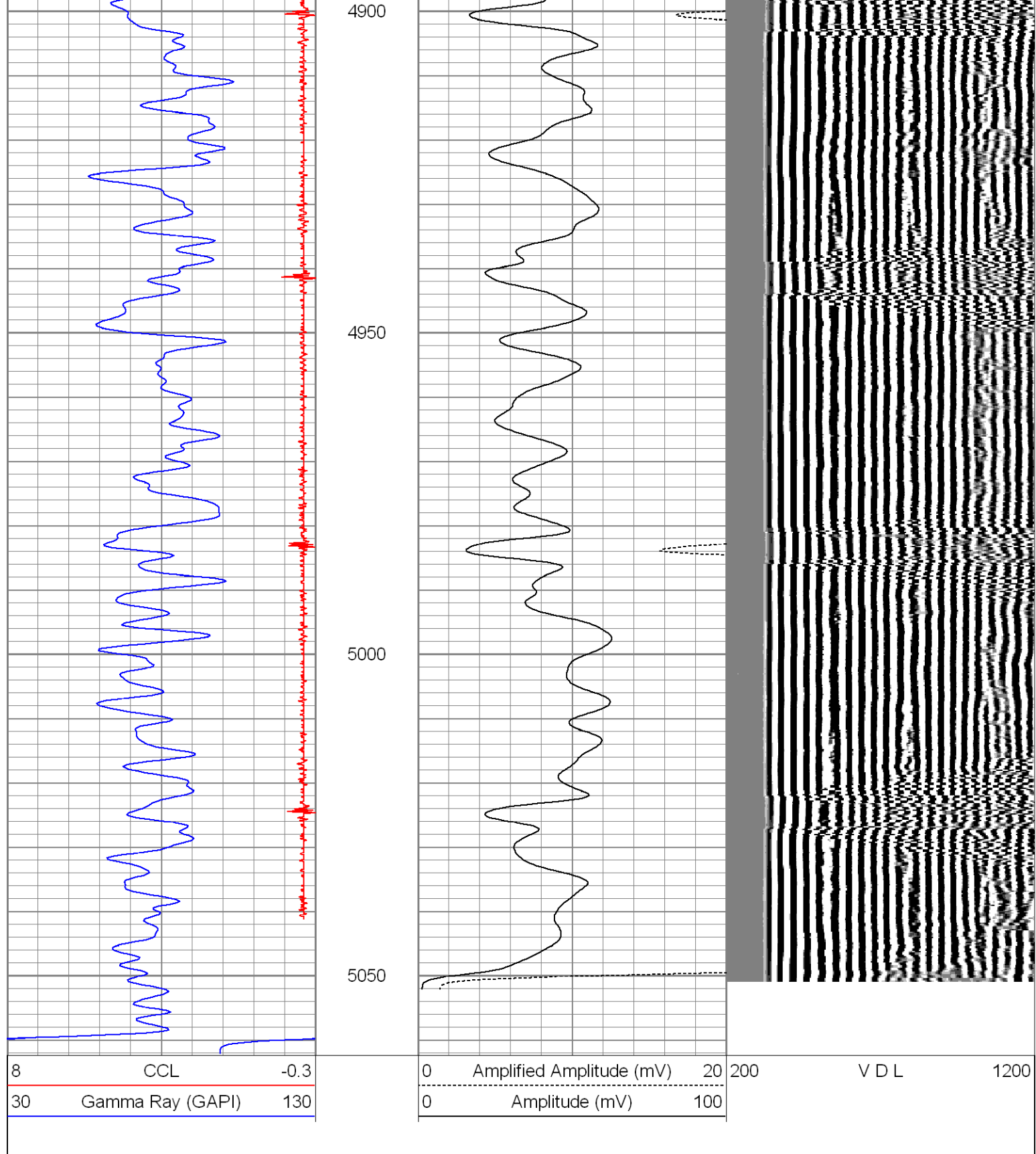
4450



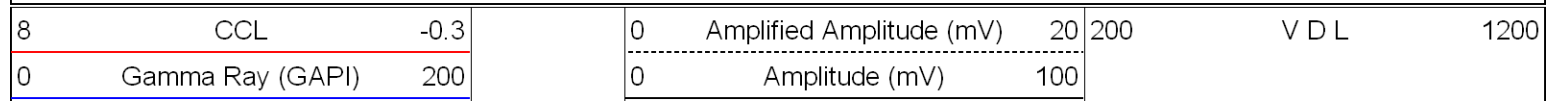


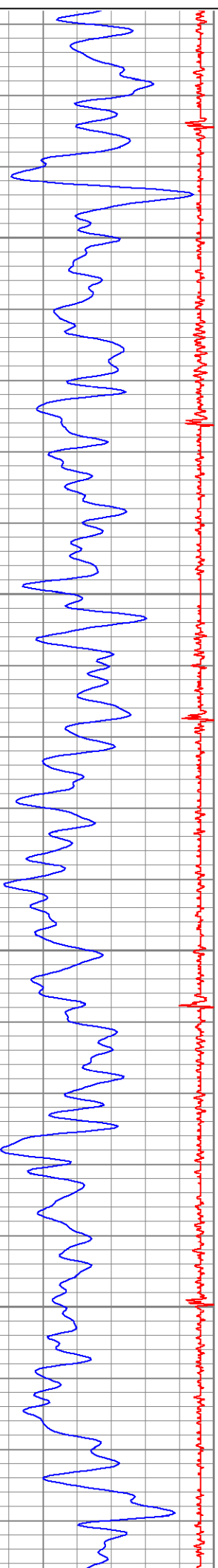






Database File: c:\documents and settings\main\_disk\desktop\cbl\harsh32-6cbl.db  
Dataset Pathname: pass2  
Presentation Format: nuexcbl  
Dataset Creation: Mon Oct 12 14:41:07 2009 by Log Open-Cased 071220  
Charted by: Depth in Feet scaled 1:240



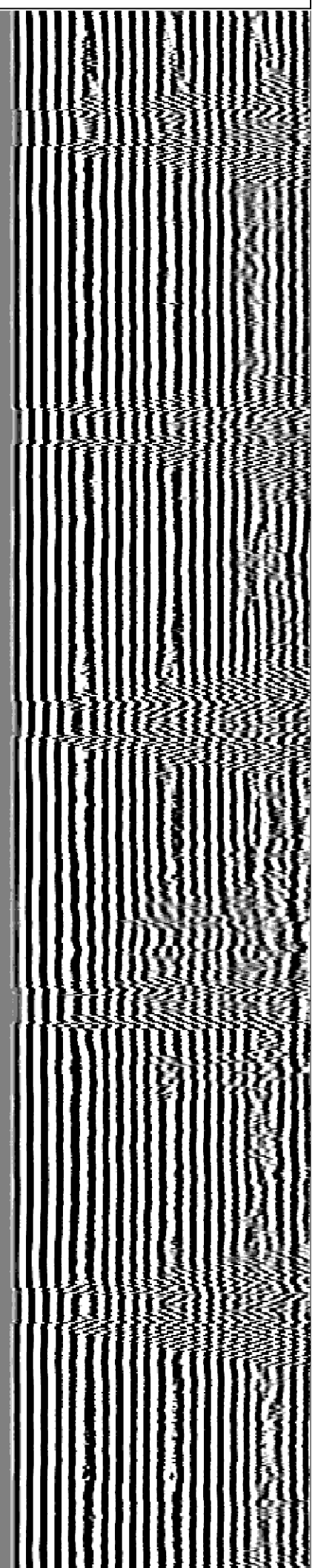
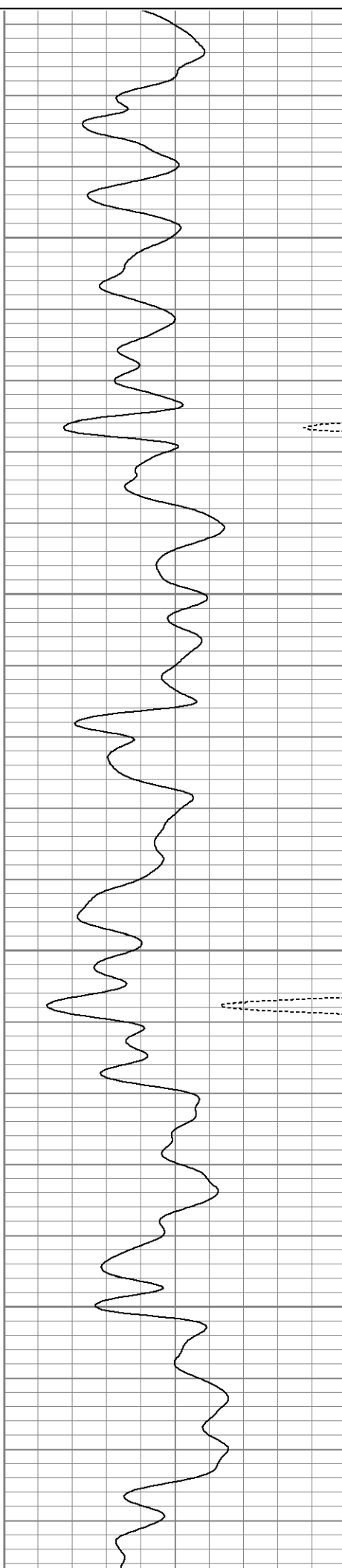


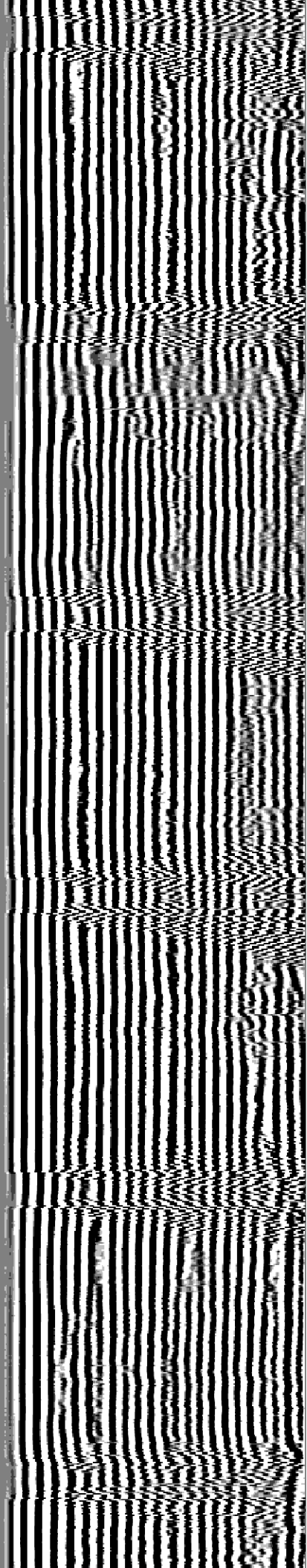
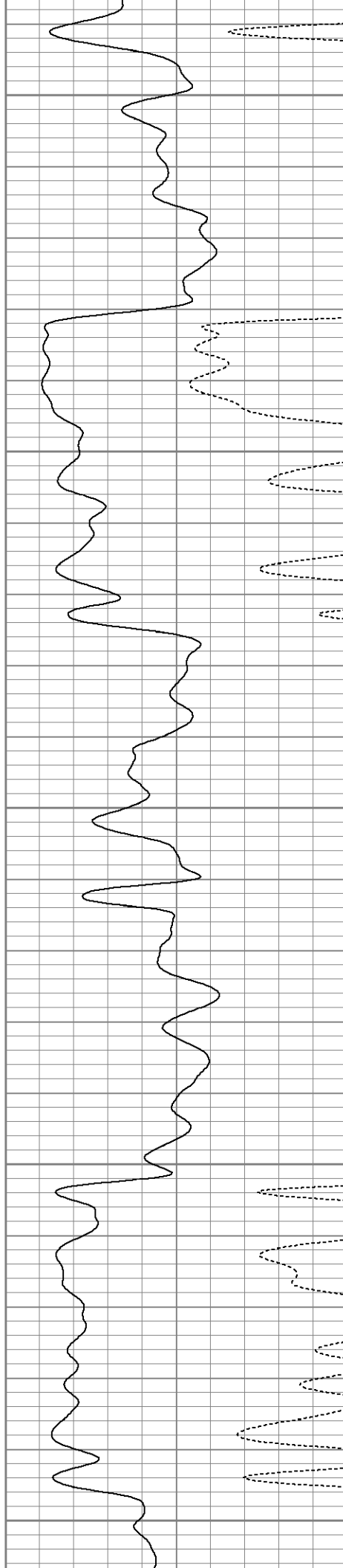
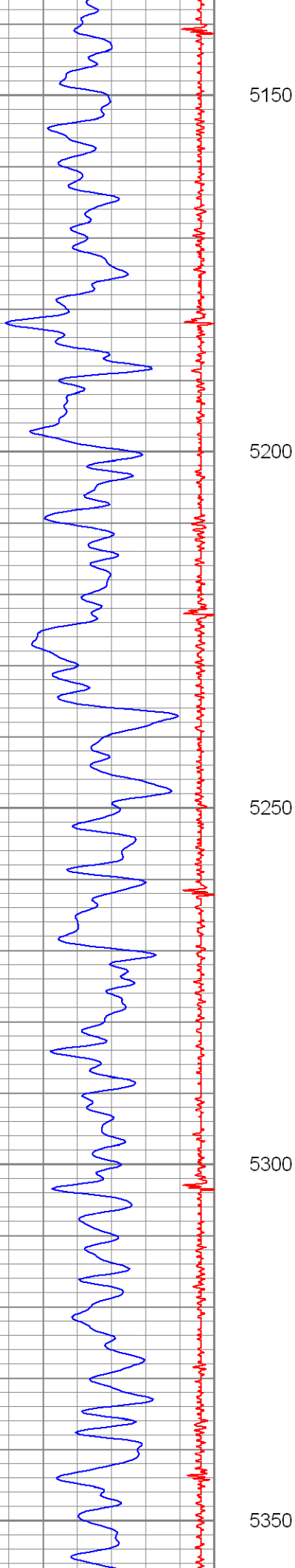
4950

5000

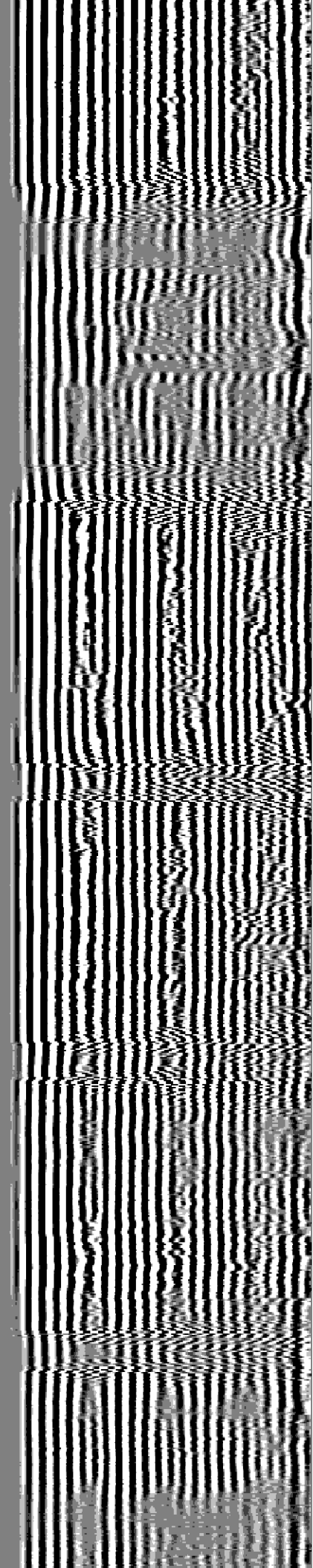
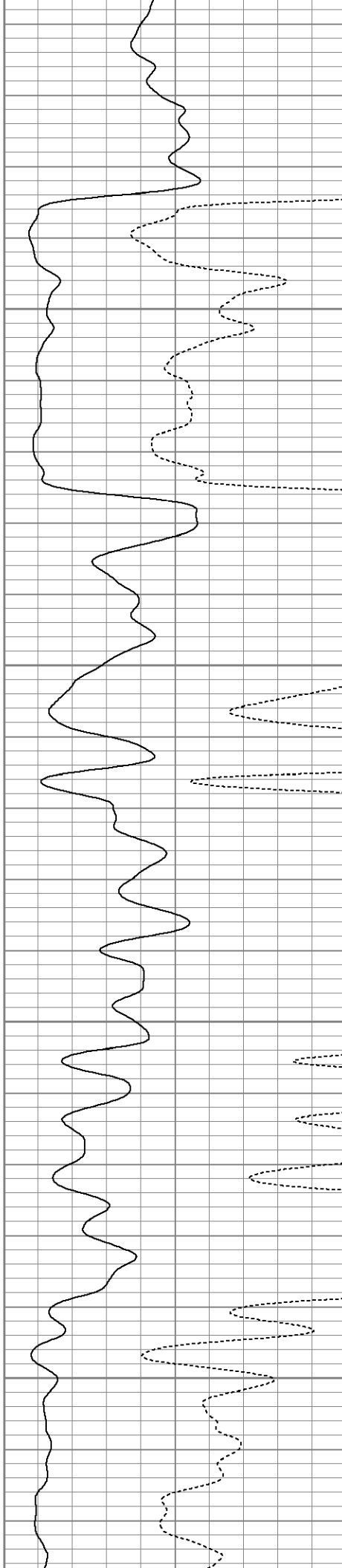
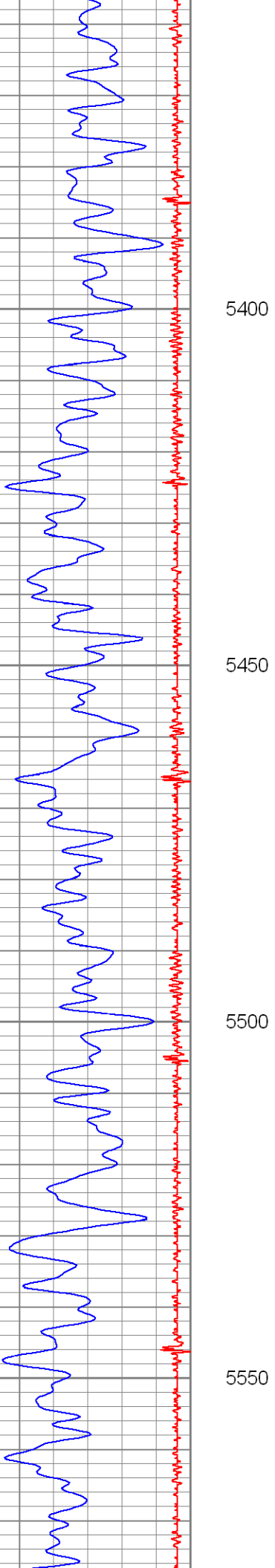
5050

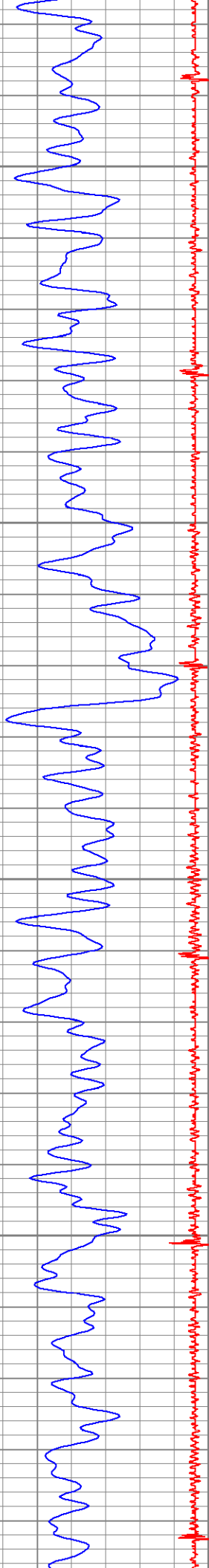
5100









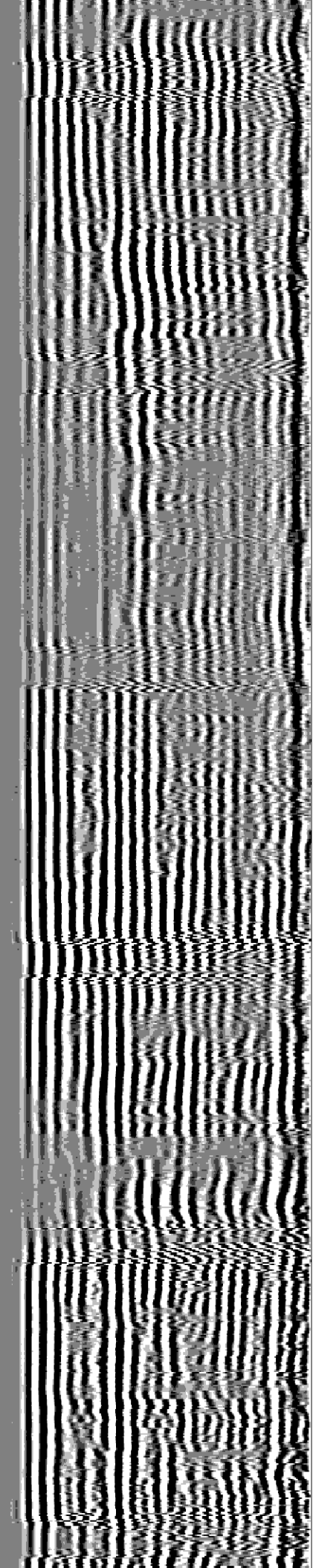
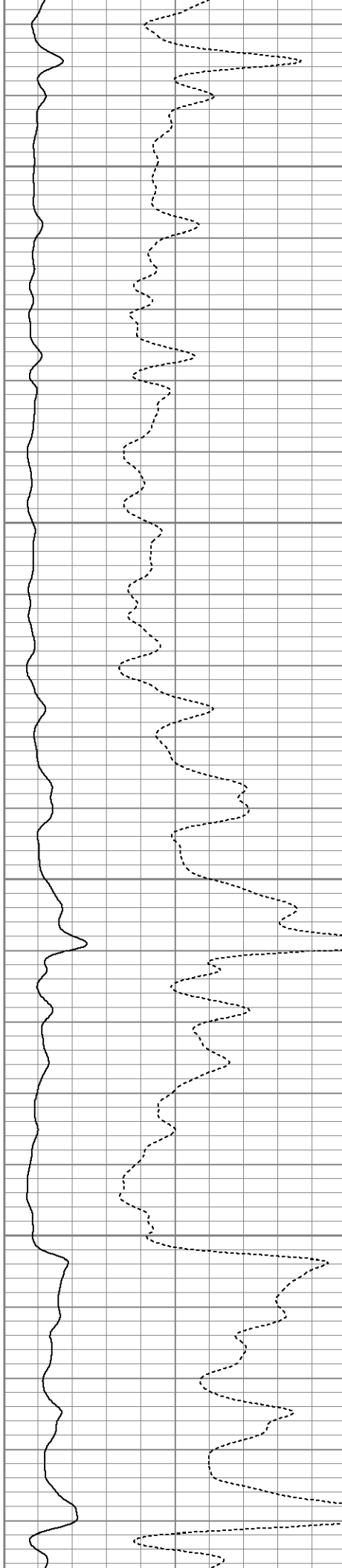


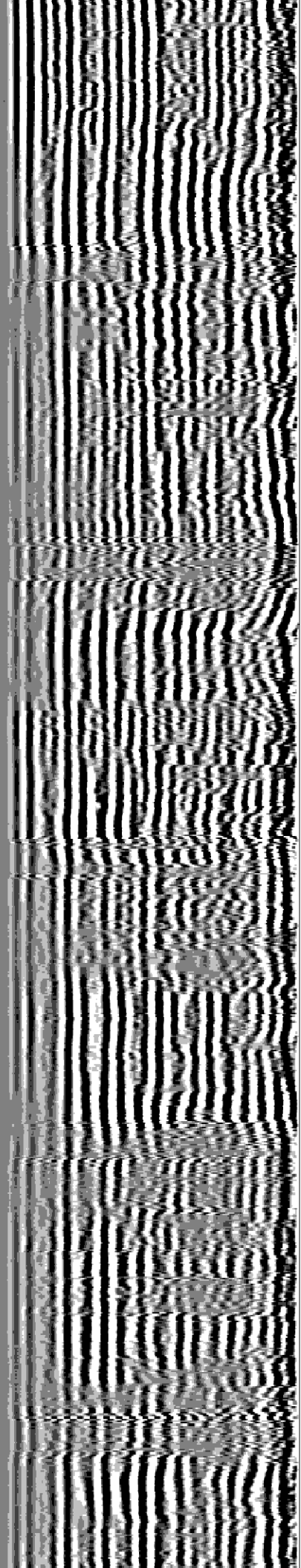
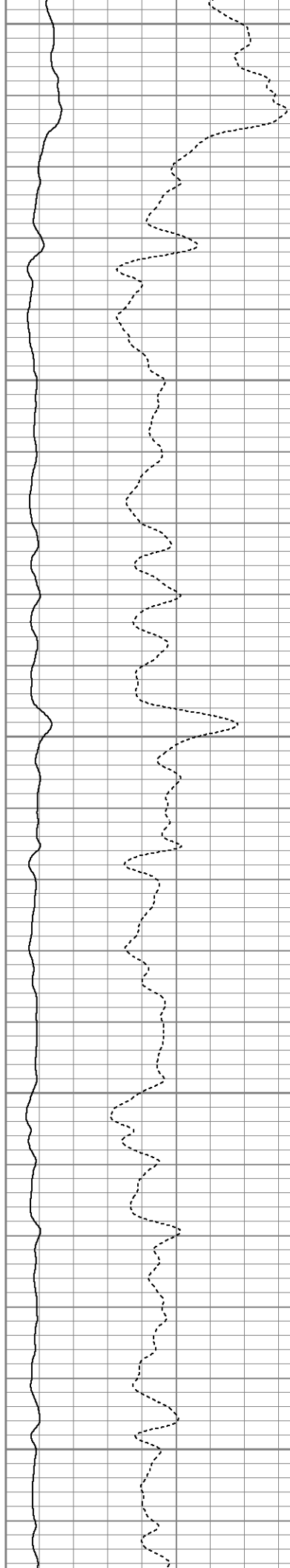
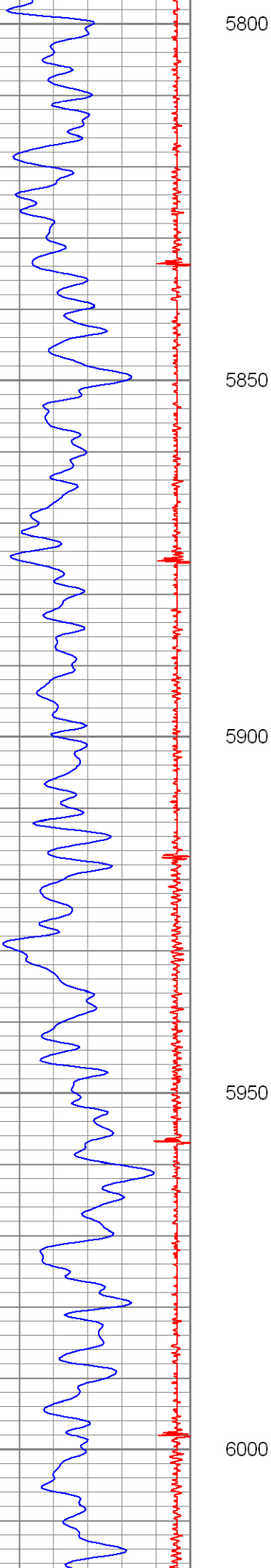
5600

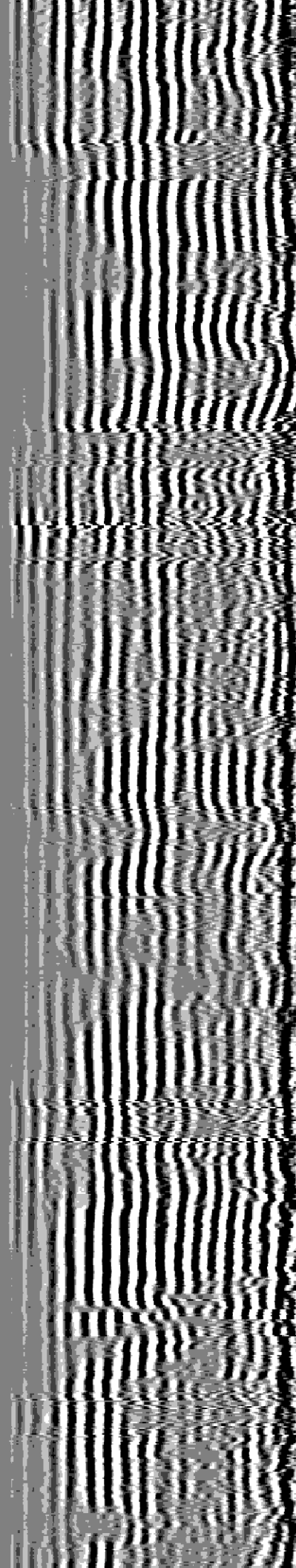
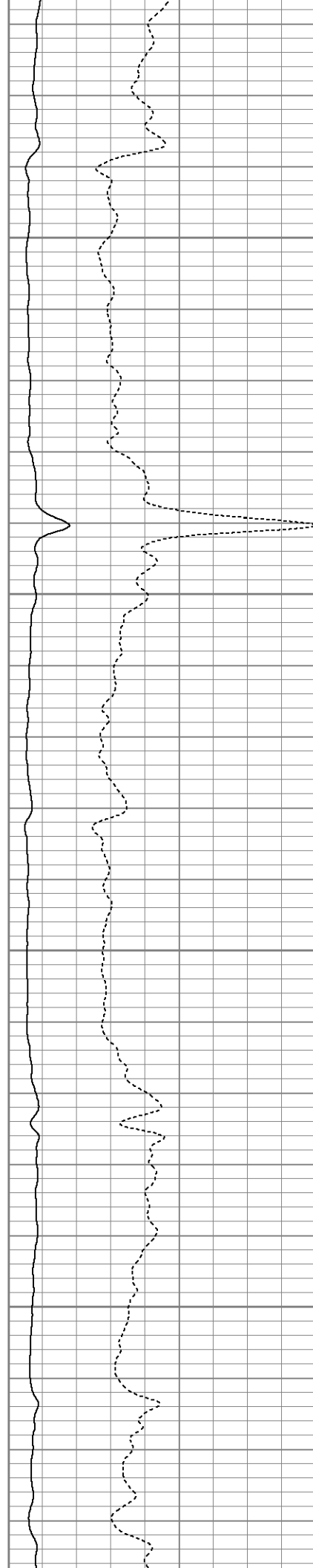
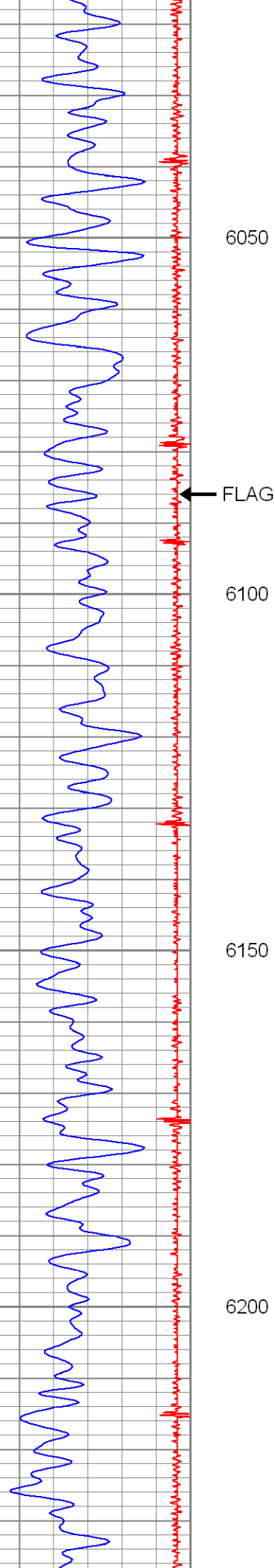
5650

5700

5750



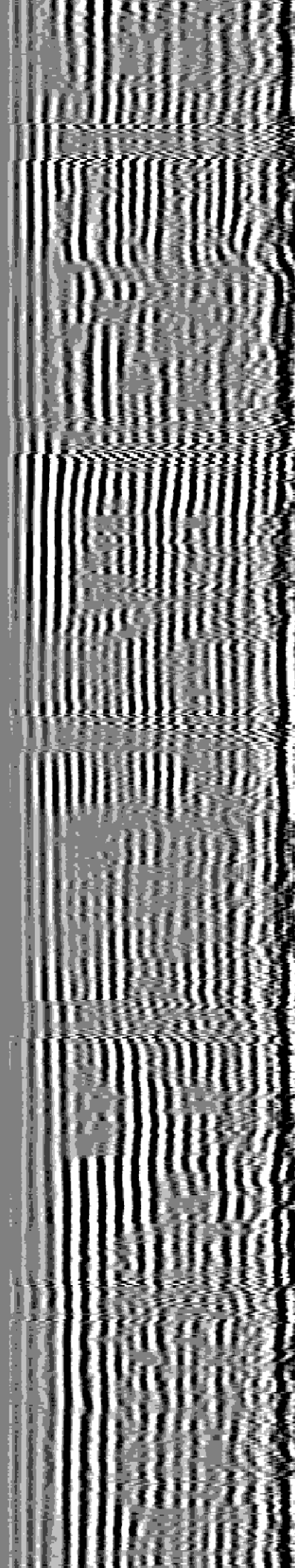
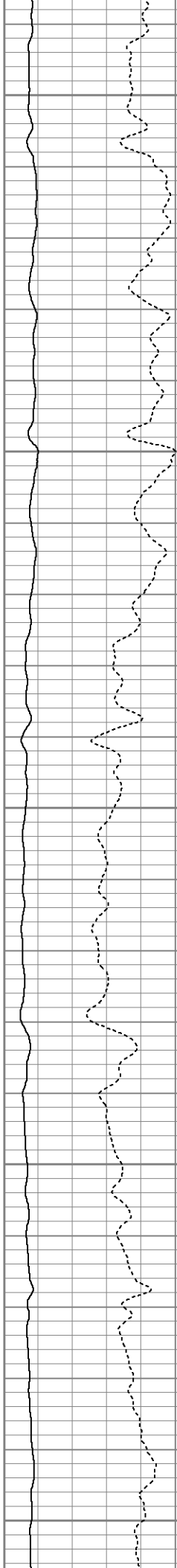




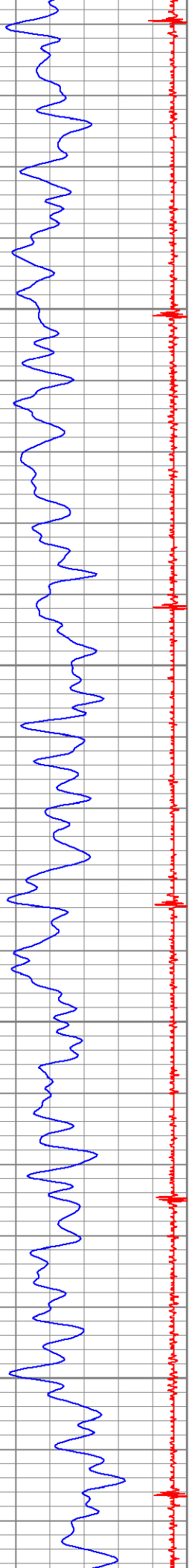




6250  
6300  
6350  
6400  
6450





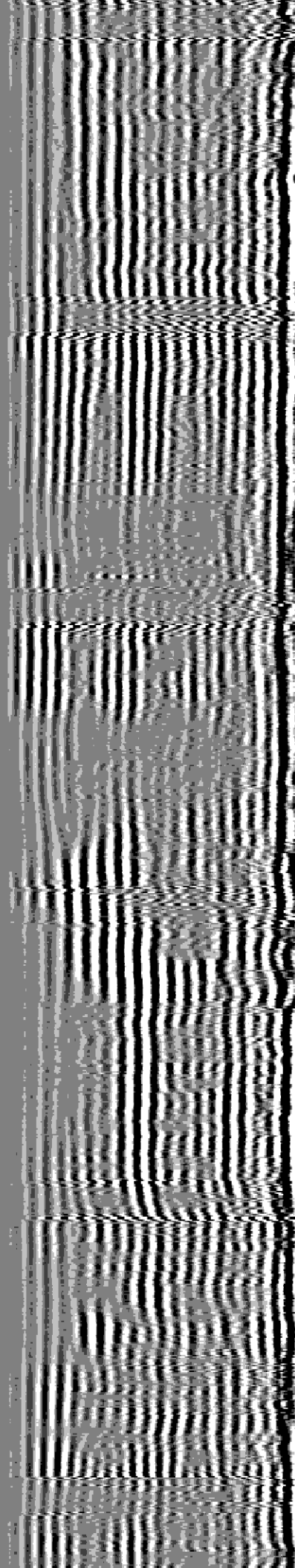
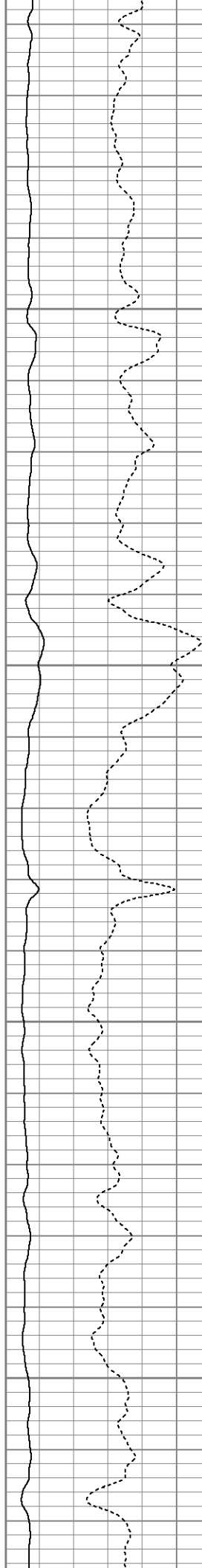


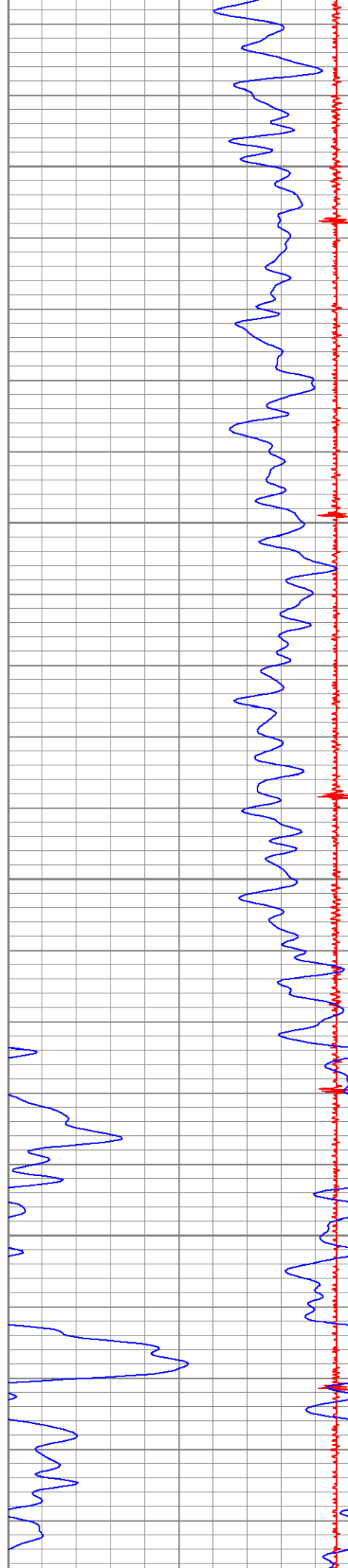
6500

6550

6600

6650



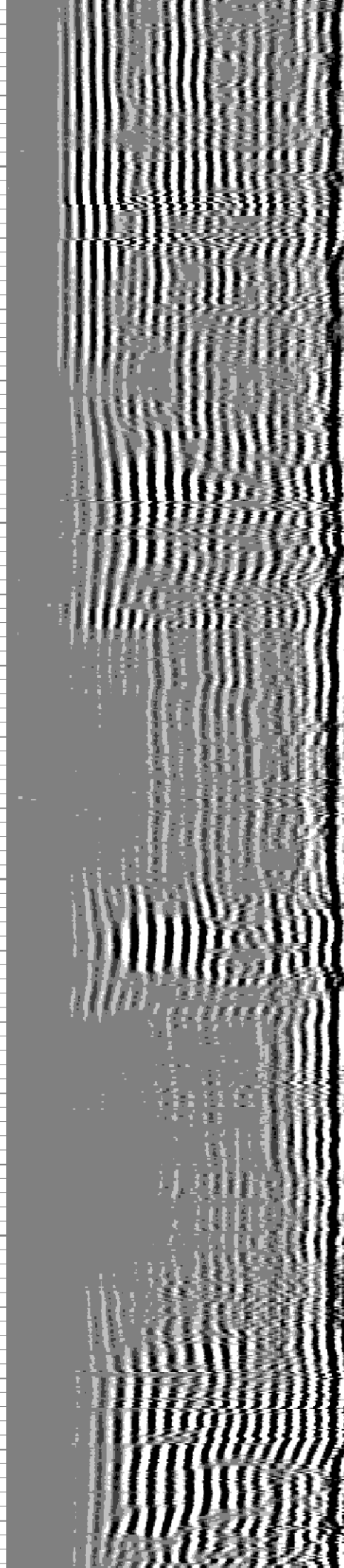
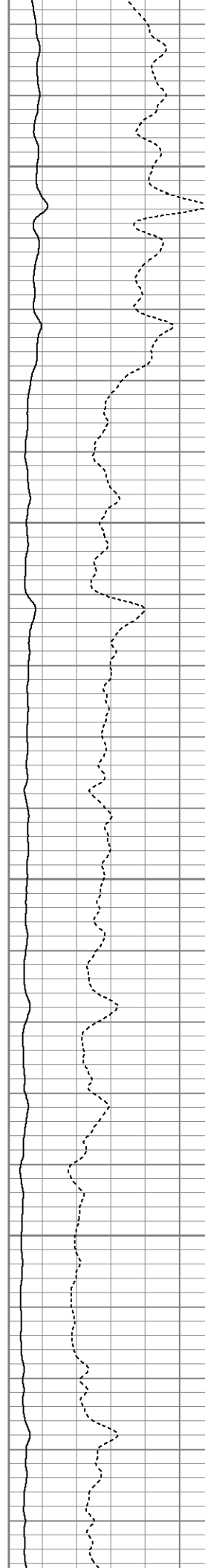


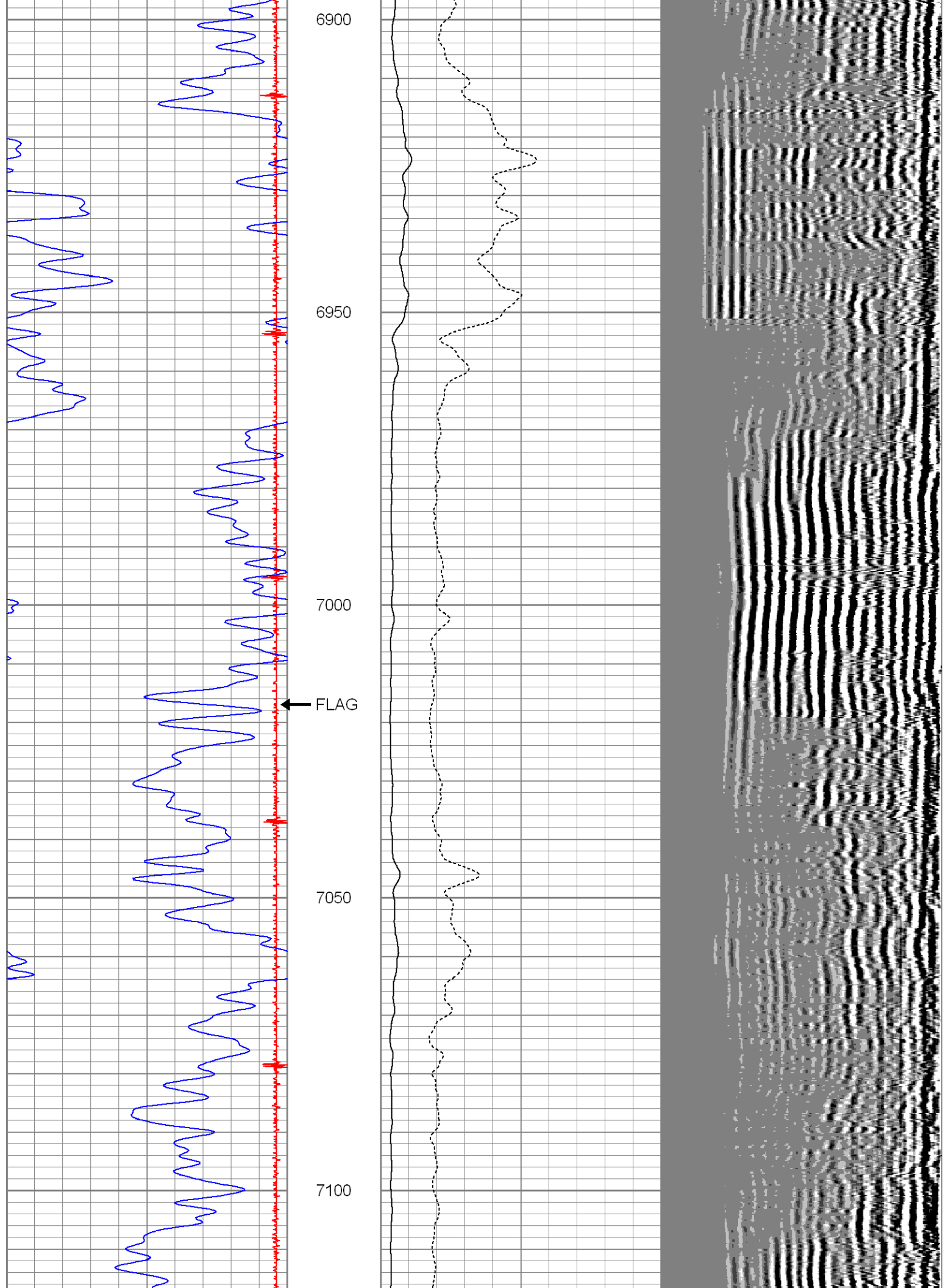
6700

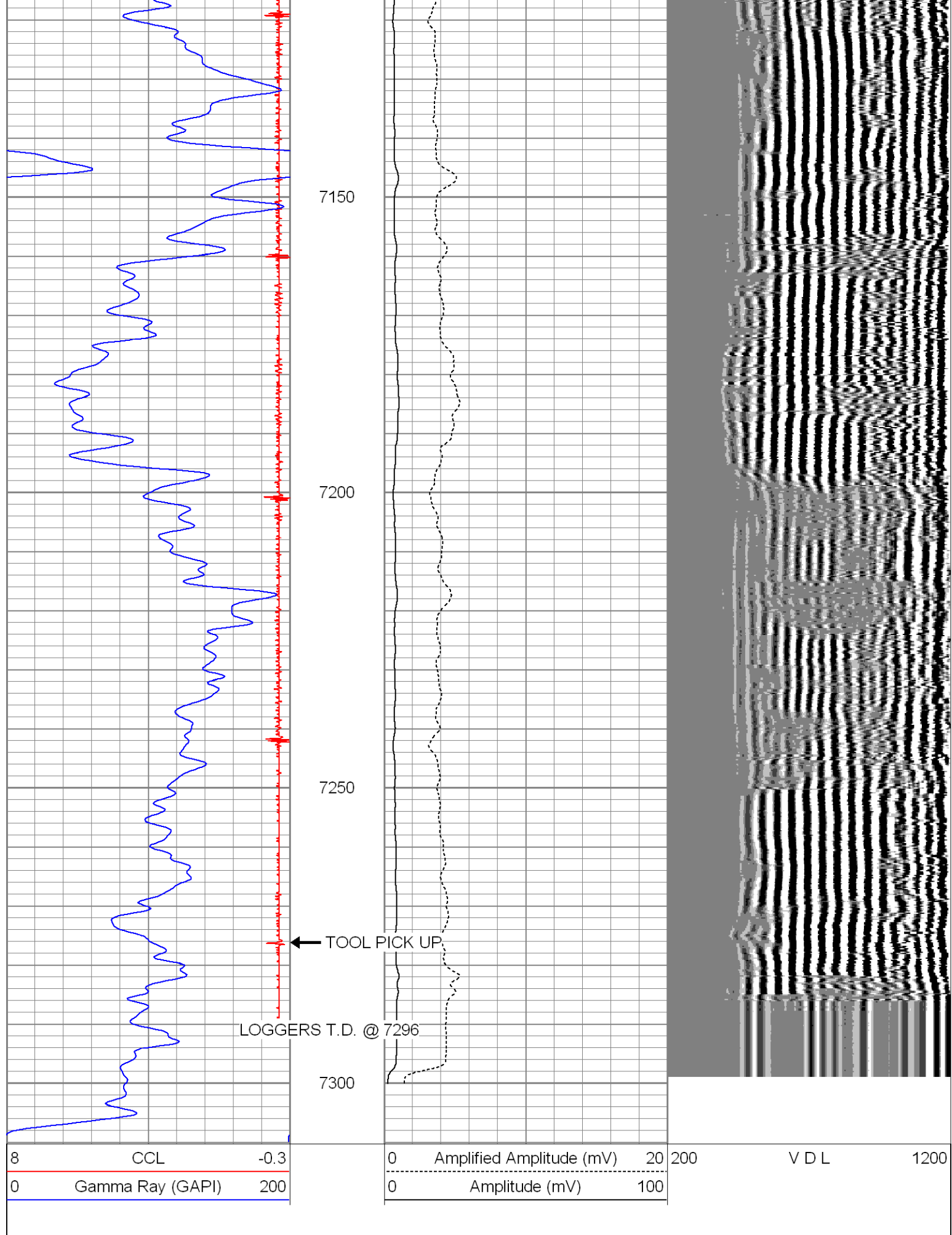
6750

6800

6850







Database File: C:\Documents and Settings\MAIN\_DISK\Desktop\CBL\harsh32-6cbl.db  
Dataset Pathname: pass3  
Dataset Creation: Mon Oct 12 15:05:14 2009 by Log Open-Cased 071220

### Gamma Ray Calibration Report

Serial Number:	tit/temp	
Tool Model:	temp/tit	
Performed:	Mon Oct 12 11:21:03 2009	
Calibrator Value:	1.0	GAPI
Background Reading:	0.0	cps
Calibrator Reading:	1.0	cps
Sensitivity:	0.8000	GAPI/cps

### Cement Bond Log Calibration Report

Serial Number:	TEKCO-01		
Tool Model:	TEKCO-1x2		
Performed:	Mon Oct 12 12:18:38 2009		
Depth:	387.38	ft	
Casing Diameter:	4.5	in	
	3' Spacing	5' Spacing	
Signal Zero:	1.2	1.2	mV
Calibrated Amplitude:	81.1961	81.1961	mV
Reading at Signal Zero:	-0.00722656	-0.00654297	V
Reading in Free Pipe:	2.5	2.5	V
Gain:	31.9062	31.9149	
Offset:	1.43057	1.40882	