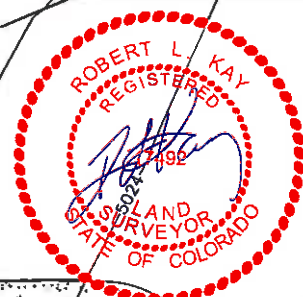
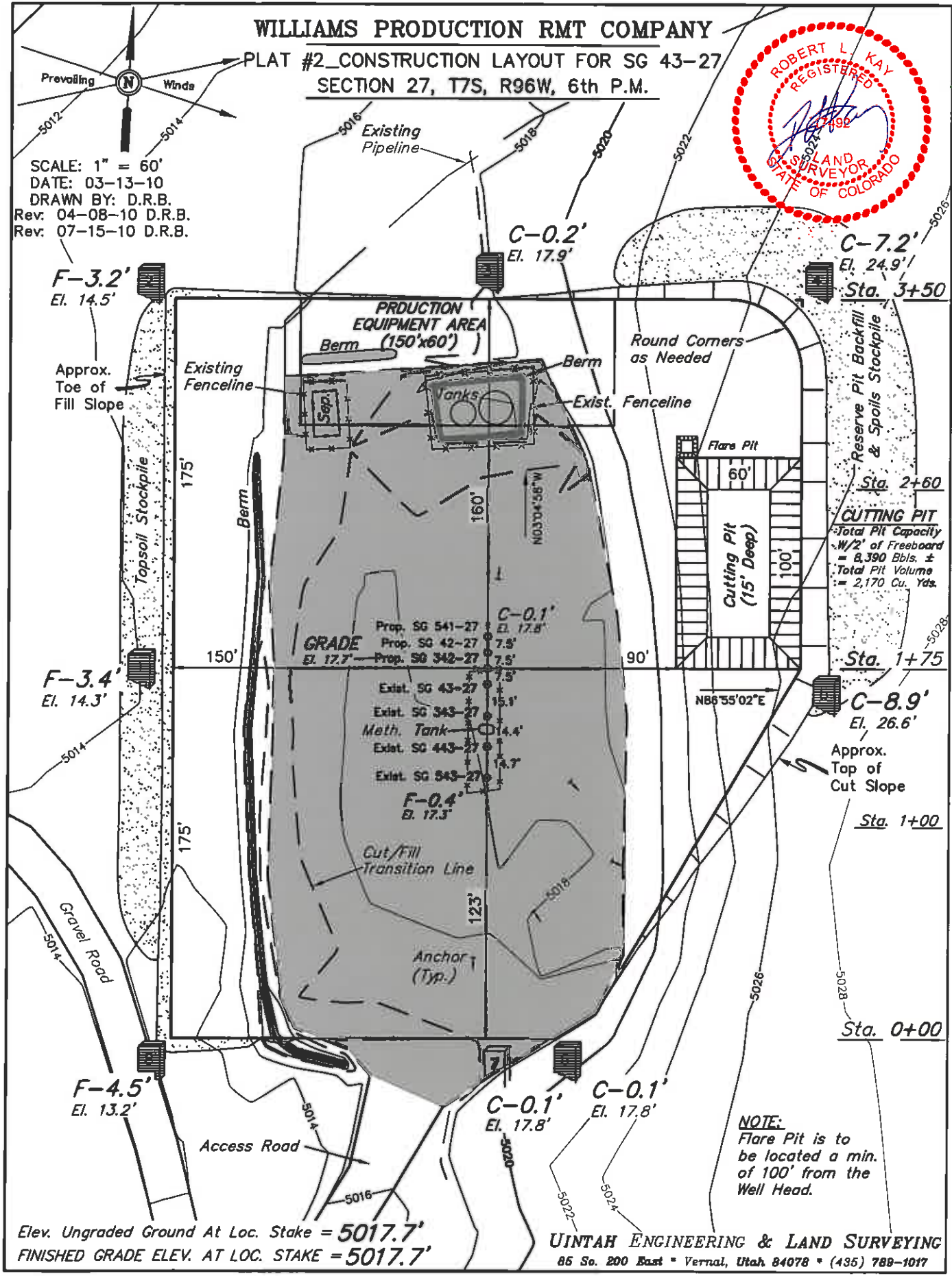


WILLIAMS PRODUCTION RMT COMPANY

PLAT #2 CONSTRUCTION LAYOUT FOR SG 43-27
SECTION 27, T7S, R96W, 6th P.M.



Prevailing Winds
SCALE: 1" = 60'
DATE: 03-13-10
DRAWN BY: D.R.B.
Rev: 04-08-10 D.R.B.
Rev: 07-15-10 D.R.B.



NOTE:
Flare Pit is to be located a min. of 100' from the Well Head.

Elev. Ungraded Ground At Loc. Stake = 5017.7'
FINISHED GRADE ELEV. AT LOC. STAKE = 5017.7'

UINTAH ENGINEERING & LAND SURVEYING
85 So. 200 East • Vernal, Utah 84078 • (435) 789-1017

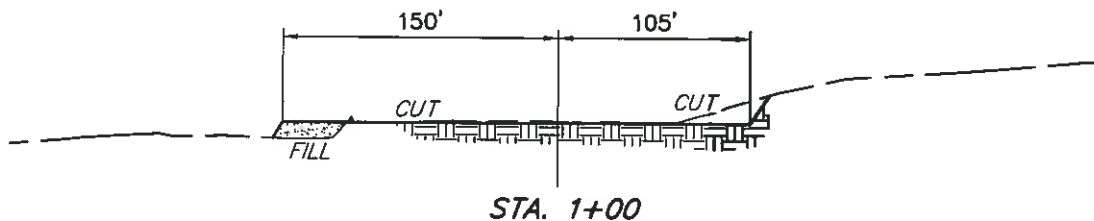
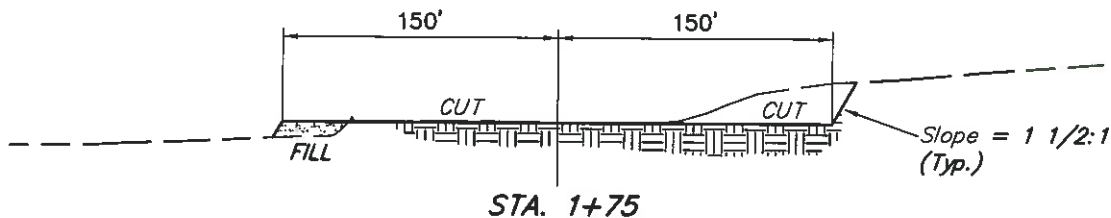
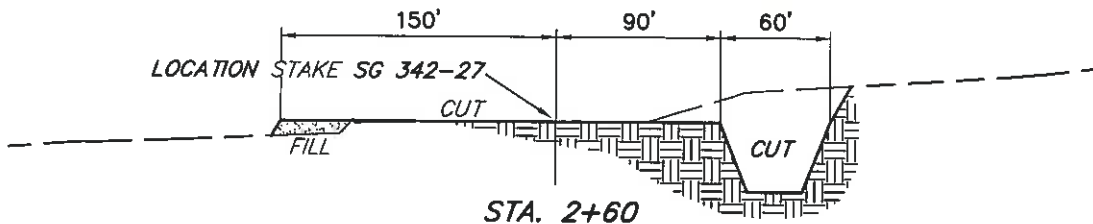
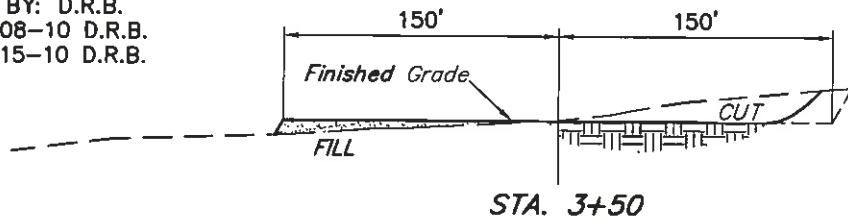
WILLIAMS PRODUCTION RMT COMPANY

PLAT #3_CONSTRUCTION LAYOUT CROSS SECTION FOR SG 43-27 SECTION 27, T7S, R96W, 6th P.M.



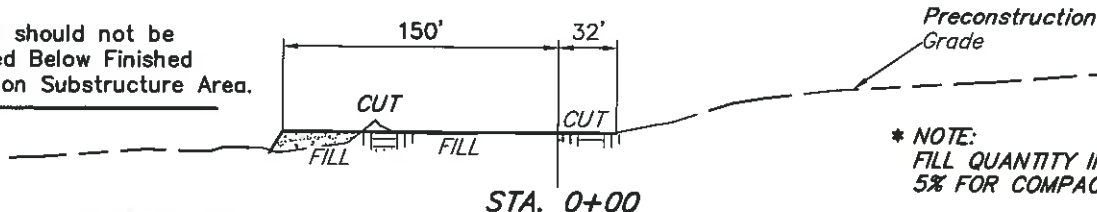
1" = 40'
X-Section
Scale
1" = 100'

DATE: 03-13-10
DRAWN BY: D.R.B.
Rev: 04-08-10 D.R.B.
Rev: 07-15-10 D.R.B.



NOTE:

Topsoil should not be Stripped Below Finished Grade on Substructure Area.



* NOTE:
FILL QUANTITY INCLUDES
5% FOR COMPACTION

APPROXIMATE YARDAGES

(6") Topsoil Stripping = 1,170 Cu. Yds.
(New Construction Only)
Remaining Location = 6,660 Cu. Yds.
TOTAL CUT = 7,830 CU.YDS.
FILL = 2,360 CU.YDS.

EXCESS MATERIAL = 5,470 Cu. Yds.
Topsoil & Pit Backfill = 2,260 Cu. Yds.
(1/2 Pit Vol.)
EXCESS UNBALANCE = 3,210 Cu. Yds.
(After Interim Rehabilitation)

UINTAH ENGINEERING & LAND SURVEYING
85 So. 200 East • Vernal, Utah 84078 • (435) 789-1017