
BILL BARRETT CORPORATION E-BILL

**CB-TG LAND 21D-20-692
MAMM CREEK
Garfield County , Colorado**

Cement Surface Casing
11-Apr-2011

Post Job Report

The Road to Excellence Starts with Safety

Sold To #: 343492		Ship To #: 2847542		Quote #:		Sales Order #: 8088093	
Customer: BILL BARRETT CORPORATION E-BILL				Customer Rep: South, Jodi			
Well Name: CB-TG LAND			Well #: 21D-20-692			API/UWI #: 05-045-19759	
Field: MAMM CREEK		City (SAP): SILT		County/Parish: Garfield			State: Colorado
Lat: N 39.518 deg. OR N 39 deg. 31 min. 4.087 secs.				Long: W 107.69 deg. OR W -108 deg. 18 min. 34.974 secs.			
Contractor: Pro Petro			Rig/Platform Name/Num: Pro Petro				
Job Purpose: Cement Surface Casing							
Well Type: Development Well			Job Type: Cement Surface Casing				
Sales Person: METLI, MARSHALL			Srvc Supervisor: CALDWELL, JEFFREY			MBU ID Emp #: 369111	

Job Personnel

HES Emp Name	Exp Hrs	Emp #	HES Emp Name	Exp Hrs	Emp #	HES Emp Name	Exp Hrs	Emp #
CALDWELL, JEFFREY S	4	369111	SLAUGHTER, JESSE Dean	4	454315	YOUNG, JEREMY R	4	418013

Equipment

HES Unit #	Distance-1 way	HES Unit #	Distance-1 way	HES Unit #	Distance-1 way	HES Unit #	Distance-1 way

Job Hours

Date	On Location Hours	Operating Hours	Date	On Location Hours	Operating Hours	Date	On Location Hours	Operating Hours
04-11-11	4	4						

TOTAL Total is the sum of each column separately

Job

Formation Name	Top	Bottom	Called Out	Date	Time	Time Zone
Formation Depth (MD)			On Location	11 - Apr - 2011	20:00	MST
Form Type	BHST		Job Started	11 - Apr - 2011	22:42	MST
Job depth MD	800. ft	Job Depth TVD	800. ft	Job Completed	11 - Apr - 2011	23:24
Water Depth		Wk Ht Above Floor	4. ft	Departed Loc	11 - Apr - 2011	23:59
Perforation Depth (MD)	From	To				

Well Data

Description	New / Used	Max pressure psig	Size in	ID in	Weight lbm/ft	Thread	Grade	Top MD ft	Bottom MD ft	Top TVD ft	Bottom TVD ft
12 1/4" Open Hole				12.25				.	800.		
9 5/8" Surface Casing	New		9.625	8.921	36.		J-55	.	800.		

Sales/Rental/3rd Party (HES)

Description	Qty	Qty uom	Depth	Supplier
PLUG,CMTG,TOP,9 5/8,HWE,8.16 MIN/9.06 MA	1	EA		

Tools and Accessories

Type	Size	Qty	Make	Depth	Type	Size	Qty	Make	Depth	Type	Size	Qty	Make
Guide Shoe					Packer					Top Plug	9.625	1	
Float Shoe					Bridge Plug					Bottom Plug			
Float Collar					Retainer					SSR plug set			
Insert Float										Plug Container	9.625	1	
Stage Tool										Centralizers			

Miscellaneous Materials

Gelling Agt	Conc	Surfactant	Conc	Acid Type	Qty	Conc	%
Treatment Fld	Conc	Inhibitor	Conc	Sand Type	Size	Qty	

Fluid Data										
Stage/Plug #: 1										
Fluid #	Stage Type	Fluid Name	Qty	Qty uom	Mixing Density lbm/gal	Yield ft ³ /sk	Mix Fluid Gal/sk	Rate bbl/min	Total Mix Fluid Gal/sk	
1	Water Spacer		20	bbl	.	.0	.0	5.0		
2	VersaCem Lead Cement	VERSACEM (TM) SYSTEM (452010)	120	sacks	12.3	2.38	13.75	5	13.75	
	13.75 Gal	FRESH WATER								
3	SwiftCem Tail Cement	SWIFTCEM (TM) SYSTEM (452990)	120	sacks	14.2	1.43	6.85	5	6.85	
	6.85 Gal	FRESH WATER								
4	Displacement		57.4	bbl	.	.0	.0	5.0		
Calculated Values		Pressures		Volumes						
Displacement	57.4	Shut In: Instant		Lost Returns		Cement Slurry	81.5	Pad		
Top Of Cement	SURFACE	5 Min		Cement Returns	22	Actual Displacement	57.4	Treatment		
Frac Gradient		15 Min		Spacers	20	Load and Breakdown		Total Job	159	
Rates										
Circulating		Mixing		Displacement		Avg. Job				
Cement Left In Pipe	Amount	46.95 ft	Reason	Shoe Joint						
Frac Ring # 1 @	ID		Frac ring # 2 @	ID		Frac Ring # 3 @	ID		Frac Ring # 4 @	ID
The Information Stated Herein Is Correct				Customer Representative Signature						

The Road to Excellence Starts with Safety

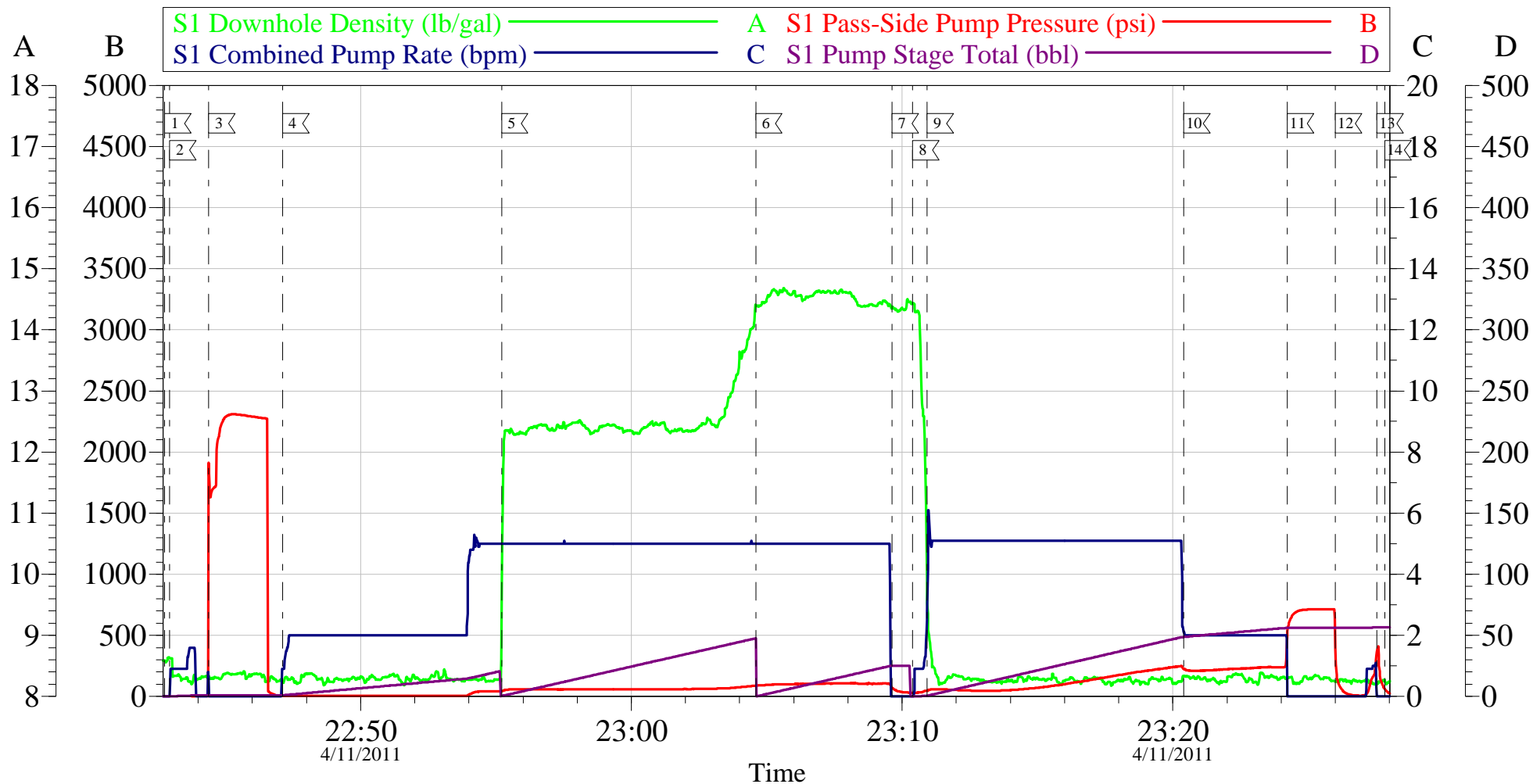
Sold To #: 343492	Ship To #: 2847542	Quote #:	Sales Order #: 8088093
Customer: BILL BARRETT CORPORATION E-BILL		Customer Rep: South, Jodi	
Well Name: CB-TG LAND	Well #: 21D-20-692	API/UWI #: 05-045-19759	
Field: MAMM CREEK	City (SAP): SILT	County/Parish: Garfield	State: Colorado
Legal Description:			
Lat: N 39.518 deg. OR N 39 deg. 31 min. 4.087 secs.		Long: W 107.69 deg. OR W -108 deg. 18 min. 34.974 secs.	
Contractor: Pro Petro		Rig/Platform Name/Num: Pro Petro	
Job Purpose: Cement Surface Casing			Ticket Amount:
Well Type: Development Well		Job Type: Cement Surface Casing	
Sales Person: METLI, MARSHALL		Srv Supervisor: CALDWELL, JEFFREY	MBU ID Emp #: 369111

Activity Description	Date/Time	Cht #	Rate bbl/min	Volume bbl		Pressure psig		Comments
				Stage	Total	Tubing	Casing	
Call Out	04/11/2011 14:00							ELITE #5
Pre-Convoy Safety Meeting	04/11/2011 14:15							ALL PERSONNEL ASSOCIATED WITH JOB ATTENDED.
Crew Leave Yard	04/11/2011 16:00							
Arrive At Loc	04/11/2011 20:00							CASING WAS STILL BEING RUN.
Safety Meeting	04/11/2011 20:05							ALL PERSONNEL ASSOCIATED WITH JOB ATTENDED.
Rig-Up Equipment	04/11/2011 20:15							
Pre-Job Safety Meeting	04/11/2011 22:20							ALL PERSONNEL ASSOCIATED WITH JOB ATTENDED.
Start Job	04/11/2011 22:42							TP., SJ:46.95', 12 1/4" OH.
Prime Pumps	04/11/2011 22:42		1	1			.0	H2O
Test Lines	04/11/2011 22:44					2300.0		TEST GOOD
Pump Spacer	04/11/2011 22:47		5	20			40.0	H2O
Pump Lead Cement	04/11/2011 22:55		5	50.9			85.0	120 SKS 12.3 PPG 2.43 CUFT/SAK 13.75 GAL/SAK
Pump Tail Cement	04/11/2011 23:04		5	30.6			120.0	120 SKS 14.2 PPG 1.43 CUFT/SAK 6.85 GAL/SAK
Shutdown	04/11/2011 23:09							
Drop Top Plug	04/11/2011 23:10							PLUG AWAY

Activity Description	Date/Time	Cht #	Rate bbl/min	Volume bbl		Pressure psig		Comments
				Stage	Total	Tubing	Casing	
Pump Displacement	04/11/2011 23:10		5	57.4			205.0	H2O
Slow Rate	04/11/2011 23:20		2	50			209.0	
Bump Plug	04/11/2011 23:24		2	57.4			710.0	PLUG BUMPED
Check Floats	04/11/2011 23:26							FLOATS HELD, 1/4 BBL BACK. ESTABLISHED CIRCULATION 18 BBLS INTO TAIL CEMENT.
Other	04/11/2011 23:27							SHUT IN 350 PSI ON WELL.
End Job	04/11/2011 23:27							22 BBLS OF CEMENT TO SURFACE.
Post-Job Safety Meeting (Pre Rig-Down)	04/11/2011 23:28							ALL PERSONNEL ASSOCIATED WITH JOB ATTENDED.
Rig-Down Equipment	04/11/2011 23:30							
Crew Leave Location	04/11/2011 23:59							THANK YOU FOR CHOOSING HALLIBURTON, JEFF CALDWELL AND CREW.

BILL BARRETT

CB-TG-Land 21D-20-692 Surface



Local Event Log					
1	Start Job	22:42:45	2	Prime Lines	22:42:57
3	Test Lines	22:44:23	4	Pump H2O Spacer	22:47:07
5	Pump Lead Cement	22:55:12	6	Pump Tail Cement	23:04:36
7	Shut Down	23:09:37	8	Drop Top Plug	23:10:24
9	Pump Displacement	23:10:55	10	Slow Rate	23:20:24
11	Bump Plug	23:24:14	12	Check Floats	23:26:00
13	Shut In Well	23:27:32	14	End Job	23:27:49

Customer: Bill Barrett	Job Date: 11-Apr-2011	Sales Order #: 8088093
Well Description: CB-TG Land 21D-20-692	Job Type: Surface	ADC Used: Yes
Company Rep: Josh Henderson	Cement Supervisor: Jeff Caldwell	Elite #: 5/Jesse Slaughter