
BILL BARRETT CORPORATION E-BILL

**CB-TG LAND 21C-20-692
MAMM CREEK
Garfield County , Colorado**

Cement Surface Casing
10-Apr-2011

Post Job Report

The Road to Excellence Starts with Safety

Sold To #: 343492	Ship To #: 2847541	Quote #:	Sales Order #: 8089608
Customer: BILL BARRETT CORPORATION E-BILL	Customer Rep: South, Jodi		
Well Name: CB-TG LAND	Well #: 21C-20-692	API/UWI #: 05-045-19769	
Field: MAMM CREEK	City (SAP): SILT	County/Parish: Garfield	State: Colorado
Lat: N 39.518 deg. OR N 39 deg. 31 min. 3.781 secs.	Long: W 107.69 deg. OR W -108 deg. 18 min. 35.086 secs.		
Contractor: Pro Petro	Rig/Platform Name/Num: Pro Petro		
Job Purpose: Cement Surface Casing			
Well Type: Development Well	Job Type: Cement Surface Casing		
Sales Person: METLI, MARSHALL	Srvc Supervisor: CALDWELL, JEFFREY	MBU ID Emp #: 369111	

Job Personnel

HES Emp Name	Exp Hrs	Emp #	HES Emp Name	Exp Hrs	Emp #	HES Emp Name	Exp Hrs	Emp #
CALDWELL, JEFFREY S	4	369111	SLAUGHTER, JESSE Dean	4	454315	YOUNG, JEREMY R	4	418013

Equipment

HES Unit #	Distance-1 way	HES Unit #	Distance-1 way	HES Unit #	Distance-1 way	HES Unit #	Distance-1 way
10533645	120 mile	10951249	120 mile	11139328	120 mile	11560046	120 mile
11562538	120 mile						

Job Hours

Date	On Location Hours	Operating Hours	Date	On Location Hours	Operating Hours	Date	On Location Hours	Operating Hours
04-10-11	4	1						
TOTAL			Total is the sum of each column separately					

Job

Formation Name								Date	Time	Time Zone	
Formation Depth (MD)	Top			Bottom			Called Out	10 - Apr - 2011	11:00	MST	
Form Type				BHST				On Location	10 - Apr - 2011	18:00	MST
Job depth MD	788.8 ft		Job Depth TVD		788.8 ft		Job Started	10 - Apr - 2011	20:47	MST	
Water Depth				Wk Ht Above Floor		4. ft		Job Completed	10 - Apr - 2011	21:33	MST
Perforation Depth (MD)	From			To			Departed Loc	10 - Apr - 2011	23:00	MST	

Well Data

Description	New / Used	Max pressure psig	Size in	ID in	Weight lbm/ft	Thread	Grade	Top MD ft	Bottom MD ft	Top TVD ft	Bottom TVD ft
12 1/4" Open Hole				12.25				.	800.		
9 5/8" Surface Casing	Unknown		9.625	8.921	36.		J-55	.	800.		

Sales/Rental/3rd Party (HES)

Description	Qty	Qty uom	Depth	Supplier
PLUG,CMTG,TOP,9 5/8,HWE,8.16 MIN/9.06 MA	1	EA		

Tools and Accessories

Type	Size	Qty	Make	Depth	Type	Size	Qty	Make	Depth	Type	Size	Qty	Make
Guide Shoe					Packer					Top Plug	9.625	1	
Float Shoe					Bridge Plug					Bottom Plug			
Float Collar					Retainer					SSR plug set			
Insert Float										Plug Container	9.625	1	
Stage Tool										Centralizers			

Miscellaneous Materials

Gelling Agt	Conc	Surfactant	Conc	Acid Type	Qty	Conc	%
Treatment Fld	Conc	Inhibitor	Conc	Sand Type	Size		Qty

Fluid Data										
Stage/Plug #: 1										
Fluid #	Stage Type	Fluid Name	Qty	Qty uom	Mixing Density lbm/gal	Yield ft ³ /sk	Mix Fluid Gal/sk	Rate bbl/min	Total Mix Fluid Gal/sk	
1	Water Spacer		20	bbl	.	.0	.0	5.0		
2	VersaCem Lead Cement	VERSACEM (TM) SYSTEM (452010)	120	sacks	12.3	2.38	13.75	5	13.75	
	13.75 Gal	FRESH WATER								
3	SwiftCem Tail Cement	SWIFTCEM (TM) SYSTEM (452990)	120	sacks	14.2	1.43	6.85	5	6.85	
	6.85 Gal	FRESH WATER								
4	Displacement		57.3	bbl	.	.0	.0	5.0		
Calculated Values		Pressures		Volumes						
Displacement	57.3	Shut In: Instant		Lost Returns		Cement Slurry	81.5	Pad		
Top Of Cement	surface	5 Min		Cement Returns	27	Actual Displacement	57.3	Treatment		
Frac Gradient		15 Min		Spacers	20	Load and Breakdown		Total Job	159	
Rates										
Circulating		Mixing	5	Displacement	5	Avg. Job	5			
Cement Left In Pipe	Amount	46.95 ft	Reason	Shoe Joint						
Frac Ring # 1 @	ID	Frac ring # 2 @	ID	Frac Ring # 3 @	ID	Frac Ring # 4 @	ID			
The Information Stated Herein Is Correct				Customer Representative Signature						

The Road to Excellence Starts with Safety

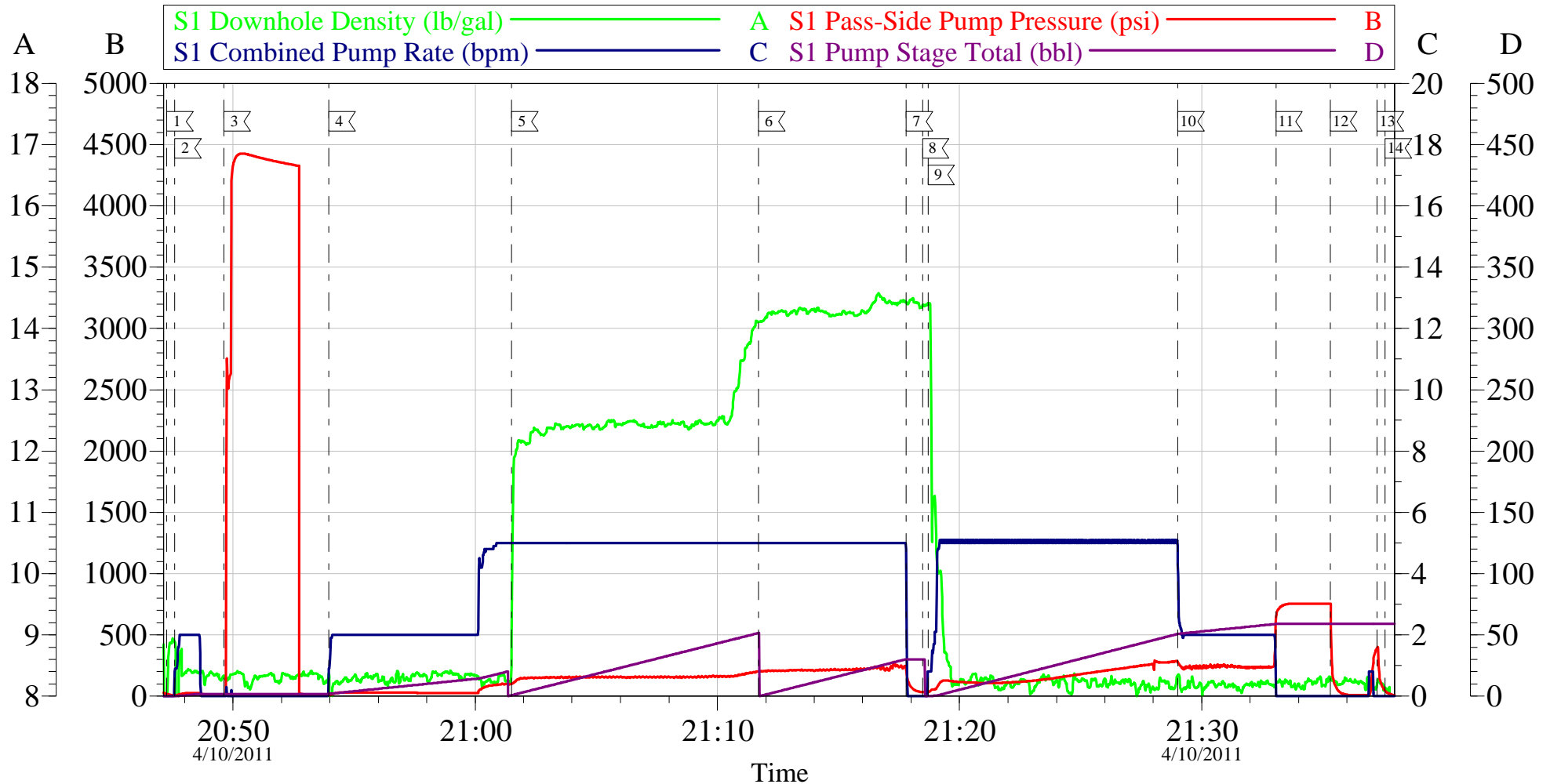
Sold To #: 343492		Ship To #: 2847541		Quote #:		Sales Order #: 8089608	
Customer: BILL BARRETT CORPORATION E-BILL				Customer Rep: South, Jodi			
Well Name: CB-TG LAND			Well #: 21C-20-692		API/UWI #: 05-045-19769		
Field: MAMM CREEK		City (SAP): SILT		County/Parish: Garfield		State: Colorado	
Legal Description:							
Lat: N 39.518 deg. OR N 39 deg. 31 min. 3.781 secs.				Long: W 107.69 deg. OR W -108 deg. 18 min. 35.086 secs.			
Contractor: Pro Petro			Rig/Platform Name/Num: Pro Petro				
Job Purpose: Cement Surface Casing						Ticket Amount:	
Well Type: Development Well			Job Type: Cement Surface Casing				
Sales Person: METLI, MARSHALL			Srv Supervisor: CALDWELL, JEFFREY				
			MBU ID Emp #: 369111				

Activity Description	Date/Time	Cht #	Rate bbl/min	Volume bbl		Pressure psig		Comments
				Stage	Total	Tubing	Casing	
Call Out	04/10/2011 11:00							ELITE #5
Pre-Convoy Safety Meeting	04/10/2011 12:45							ALL PERSONNEL ASSOCIATED WITH JOB ATTENDED.
Crew Leave Yard	04/10/2011 13:00							
Arrive At Loc	04/10/2011 18:00							CASING WAS BEING RUN.
Safety Meeting	04/10/2011 18:05							ALL PERSONNEL ASSOCIATED WITH JOB ATTENDED.
Rig-Up Equipment	04/10/2011 18:15							
Pre-Job Safety Meeting	04/10/2011 20:15							ALL PERSONNEL ASSOCIATED WITH JOB ATTENDED.
Start Job	04/10/2011 20:47							TP:788.75', SJ:46.95', 12 1/4" OH.
Prime Pumps	04/10/2011 20:47		2	2			20.0	H2O
Test Lines	04/10/2011 20:49					4400.0		TEST GOOD
Pump Spacer	04/10/2011 20:53		5	20			99.0	H2O
Pump Lead Cement	04/10/2011 21:01		5	50.9			190.0	120 SKS 12.3 PPG 2.38 CUFT/SAK 13.75 GAL/SAK
Pump Tail Cement	04/10/2011 21:11		5	30.6			215.0	120 SKS 14.2 PPG 1.43 CUFT/SAK 6.85 GAL/SAK
Shutdown	04/10/2011 21:17							
Drop Top Plug	04/10/2011 21:18							PLUG AWAY

Activity Description	Date/Time	Cht #	Rate bbl/min	Volume bbl		Pressure psig		Comments
				Stage	Total	Tubing	Casing	
Pump Displacement	04/10/2011 21:18		5	57.3			230.0	H2O
Slow Rate	04/10/2011 21:29		2	50			222.0	
Bump Plug	04/10/2011 21:33		2	57.3			751.0	PLUG BUMPED.
Check Floats	04/10/2011 21:35							FLOATS HELD 1/4 BBL BACK. ESTABLISHED CIRCULATION 22 BBLS INT TAIL.
Other	04/10/2011 21:37							SHUT IN 350 PSI ON WELL.
End Job	04/10/2011 21:37							27 BBLS OF CEMENT TO SURFACE.
Post-Job Safety Meeting (Pre Rig-Down)	04/10/2011 21:38							ALL PERSONNEL ASSOCIATED WITH JOB ATTENDED.
Rig-Down Equipment	04/10/2011 21:45							
Crew Leave Location	04/10/2011 23:00							THANK YOU FOR CHOOSING HALLIBURTON, JEFF CALDWELL AND CREW.

BILL BARRETT

CB-TG Land 21C-20-692 Surface



Local Event Log					
1	Start Job	20:47:15	2	Prime Lines	20:47:36
3	Test Lines	20:49:37	4	Pump H2O Spacer	20:53:57
5	Pump Lead Cement	21:01:30	6	Pump Tail Cement	21:11:43
7	Shut Down	21:17:48	8	Drop Top Plug	21:18:28
9	Pump Displacement	21:18:42	10	Slow Rate	21:29:00
11	Bump Plug	21:33:04	12	Check Floats	21:35:19
13	Shut In Well	21:37:14	14	End Job	21:37:34

Customer: Williams	Job Date: 10-Apr-2011	Sales Order #: 8089608
Well Description: CB-TG Land 21C-20-692	Job Type: Surface	ADC Used: Yes
Company Rep: Josh Henderson	Cement Supervisor: Jeff Caldwell	Elite #: 5/Jesse Slaughter

OptiCem v6.4.2
10-Apr-11 21:45