

---

# **BILL BARRETT CORPORATION E-BILL**

---

**CB-TG LAND 21B-20-692  
MAMM CREEK  
Garfield County , Colorado**

**Cement Surface Casing**  
**09-Apr-2011**

**Post Job Report**

## The Road to Excellence Starts with Safety

Sold To #: 343492		Ship To #: UNKNOWN		Quote #:		Sales Order #: 8089213	
Customer: BILL BARRETT CORPORATION E-BILL				Customer Rep: South, Jodi			
Well Name: CB-TG LAND			Well #: 21B-20-692			API/UWI #:	
Field: MAMM CREEK		City (SAP): SILT		County/Parish: Garfield		State: Colorado	
Contractor: Pro Petro			Rig/Platform Name/Num: Pro Petro				
Job Purpose: Cement Surface Casing							
Well Type: Development Well			Job Type: Cement Surface Casing				
Sales Person: METLI, MARSHALL			Srvc Supervisor: CALDWELL, JEFFREY			MBU ID Emp #: 369111	

### Job Personnel

HES Emp Name	Exp Hrs	Emp #	HES Emp Name	Exp Hrs	Emp #	HES Emp Name	Exp Hrs	Emp #
CALDWELL, JEFFREY S	4	369111	SLAUGHTER, JESSE Dean	4	454315	YOUNG, JEREMY R	4	418013

### Equipment

HES Unit #	Distance-1 way	HES Unit #	Distance-1 way	HES Unit #	Distance-1 way	HES Unit #	Distance-1 way
10533645	120 mile	10951249	120 mile	11139328	120 mile	11560046	120 mile
11562538	120 mile						

### Job Hours

Date	On Location Hours	Operating Hours	Date	On Location Hours	Operating Hours	Date	On Location Hours	Operating Hours
04-09-11	4	1						

**TOTAL** Total is the sum of each column separately

### Job

Formation Name	Top	Bottom	Called Out	Date	Time	Time Zone
<b>Formation Depth (MD)</b>			<b>On Location</b>	08 - Apr - 2011	20:00	MST
<b>Form Type</b>		BHST	<b>Job Started</b>	09 - Apr - 2011	01:00	MST
<b>Job depth MD</b>	794.6 ft	<b>Job Depth TVD</b>	794.6 ft	<b>Job Completed</b>	09 - Apr - 2011	02:39
<b>Water Depth</b>		<b>Wk Ht Above Floor</b>	4. ft	<b>Job Completed</b>	09 - Apr - 2011	03:28
<b>Perforation Depth (MD)</b>	<b>From</b>	<b>To</b>	<b>Departed Loc</b>	09 - Apr - 2011	05:00	MST

### Well Data

Description	New / Used	Max pressure psig	Size in	ID in	Weight lbm/ft	Thread	Grade	Top MD ft	Bottom MD ft	Top TVD ft	Bottom TVD ft
-------------	------------	-------------------	---------	-------	---------------	--------	-------	-----------	--------------	------------	---------------

### Sales/Rental/3<sup>rd</sup> Party (HES)

Description	Qty	Qty uom	Depth	Supplier
PLUG,CMTG,TOP,9 5/8,HWE,8.16 MIN/9.06 MA	1	EA		

### Tools and Accessories

Type	Size	Qty	Make	Depth	Type	Size	Qty	Make	Depth	Type	Size	Qty	Make
Guide Shoe					Packer					Top Plug	9.625	1	
Float Shoe					Bridge Plug					Bottom Plug			
Float Collar					Retainer					SSR plug set			
Insert Float										Plug Container	9.625	1	
Stage Tool										Centralizers			

### Miscellaneous Materials

Gelling Agt	Conc	Surfactant	Conc	Acid Type	Qty	Conc	%
Treatment Fld	Conc	Inhibitor	Conc	Sand Type	Size	Qty	

Fluid Data										
Stage/Plug #: 1										
Fluid #	Stage Type	Fluid Name	Qty	Qty uom	Mixing Density lbm/gal	Yield ft <sup>3</sup> /sk	Mix Fluid Gal/sk	Rate bbl/min	Total Mix Fluid Gal/sk	
1	Water Spacer		20	bbl	.	.0	.0	5.0		
2	VersaCem Lead Cement	VERSACEM (TM) SYSTEM (452010)	120	sacks	12.3	2.38	13.75	5	13.75	
	13.75 Gal	FRESH WATER								
3	SwiftCem Tail Cement	SWIFTCES (TM) SYSTEM (452990)	120	sacks	14.2	1.43	6.85	5	6.85	
	6.85 Gal	FRESH WATER								
4	Displacement		57.8	bbl	.	.0	.0	5.0		
Calculated Values		Pressures		Volumes						
Displacement	57.8	Shut In: Instant		Lost Returns		Cement Slurry	81.5	Pad		
Top Of Cement	SURFACE	5 Min		Cement Returns	20	Actual Displacement	57.8	Treatment		
Frac Gradient		15 Min		Spacers	20	Load and Breakdown		Total Job	160	
Rates										
Circulating		Mixing	5	Displacement	5	Avg. Job	5			
Cement Left In Pipe	Amount	46.95 ft	Reason	Shoe Joint						
Frac Ring # 1 @	ID	Frac ring # 2 @	ID	Frac Ring # 3 @	ID	Frac Ring # 4 @	ID			
The Information Stated Herein Is Correct				Customer Representative Signature						

*The Road to Excellence Starts with Safety*

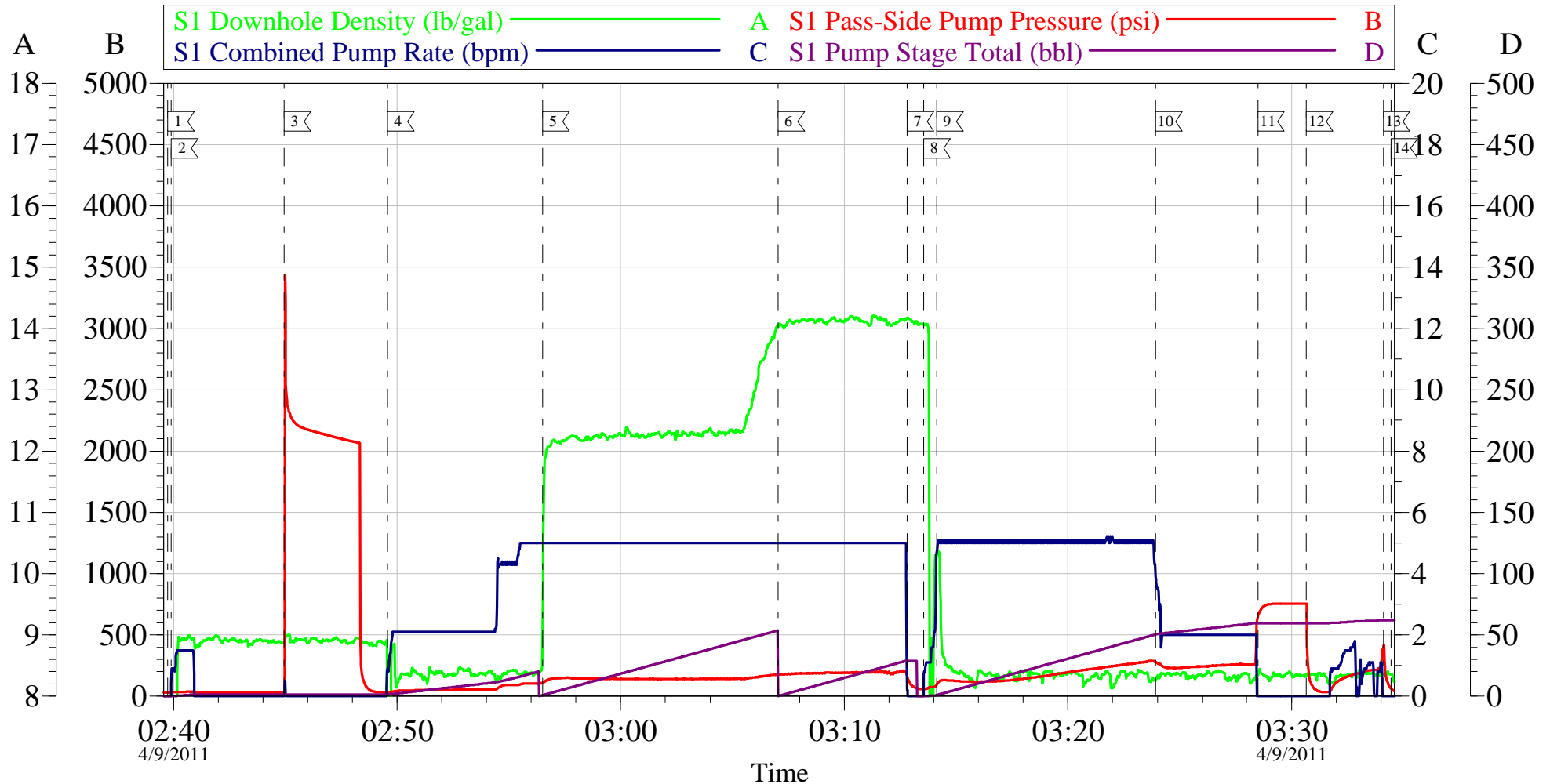
<b>Sold To #:</b> 343492		<b>Ship To #:</b> UNKNOWN		<b>Quote #:</b>		<b>Sales Order #:</b> 8089213	
<b>Customer:</b> BILL BARRETT CORPORATION E-BILL				<b>Customer Rep:</b> South, Jodi			
<b>Well Name:</b> CB-TG LAND			<b>Well #:</b> 21B-20-692			<b>API/UWI #:</b>	
<b>Field:</b> MAMM CREEK		<b>City (SAP):</b> SILT		<b>County/Parish:</b> Garfield			<b>State:</b> Colorado
<b>Legal Description:</b>							
<b>Lat:</b>				<b>Long:</b>			
<b>Contractor:</b> Pro Petro			<b>Rig/Platform Name/Num:</b> Pro Petro				
<b>Job Purpose:</b> Cement Surface Casing						<b>Ticket Amount:</b>	
<b>Well Type:</b> Development Well			<b>Job Type:</b> Cement Surface Casing				
<b>Sales Person:</b> METLI, MARSHALL			<b>Srvc Supervisor:</b> CALDWELL, JEFFREY			<b>MBU ID Emp #:</b> 369111	

Activity Description	Date/Time	Cht #	Rate bbl/min	Volume bbl		Pressure psig		Comments
				Stage	Total	Tubing	Casing	
Call Out	04/08/2011 20:00							ELITE #5
Pre-Convoy Safety Meeting	04/08/2011 21:45							ALL PERSONNEL ASSOCIATED WITH JOB ATTENDED.
Crew Leave Yard	04/08/2011 22:00							
Arrive At Loc	04/09/2011 01:00							CASING WAS STILL BEING RUN.
Safety Meeting	04/09/2011 01:05							ALL PERSONNEL ASSOCIATED WITH JOB ATTENDED.
Rig-Up Equipment	04/09/2011 01:15							
Pre-Job Safety Meeting	04/09/2011 02:15							ALL PERSONNEL ASSOCIATED WITH JOB ATTENDED.
Start Job	04/09/2011 02:39							TP:794.55 SJ:46.95', 12 1/4" OH.
Prime Pumps	04/09/2011 02:39		1.5	1.5			11.0	H2O
Test Lines	04/09/2011 02:44					2200.0		TEST GOOD
Pump Spacer	04/09/2011 02:49		5	20			60.0	H2O
Pump Lead Cement	04/09/2011 02:56		5	50.9			126.0	120 SKS 12.3 PPG 2.38 CUFT/SAK 13.75 GAL/SAK
Pump Tail Cement	04/09/2011 03:07		5	30.6			147.0	120 SKS 14.2 PPG 1.43 CUFT/SAK 6.85 GAL/SAK. ESTABLISHED RETURNS 24 BBLS INTO TAIL.
Shutdown	04/09/2011 03:12							

Activity Description	Date/Time	Cht #	Rate bbl/min	Volume bbl		Pressure psig		Comments
				Stage	Total	Tubing	Casing	
Drop Top Plug	04/09/2011 03:13							PLUG WAY
Pump Displacement	04/09/2011 03:14		5	57.8			214.0	H2O
Slow Rate	04/09/2011 03:23		2	50			206.0	
Bump Plug	04/09/2011 03:28		2	57.8			753.0	PLUG BUMPED
Check Floats	04/09/2011 03:30							FLOATS HELD 1/4 BBL BACK.
Other	04/09/2011 03:34							SHUT IN 350 PSI.
End Job	04/09/2011 03:34							20 BBLS OF CEMENT TO SURFACE.
Post-Job Safety Meeting (Pre Rig-Down)	04/09/2011 03:36							ALL PERSONNEL ASSOCIATED WITH JOB ATTENDED.
Rig-Down Equipment	04/09/2011 03:40							
Crew Leave Location	04/09/2011 05:00							THANK YOU FOR CHOOSING HALLIBURTON, JEFF CALDWELL AND CREW.

# BILL BARRETT

## CB-TG Land 21B-20-692 Surface



Local Event Log			
1	Start Job	02:39:44	2
2	Prime Lines	02:39:55	3
3	Test Lines	02:44:57	4
4	Pump H2O Spacer	02:49:35	5
5	Pump Lead Cement	02:56:30	6
6	Pump Tail Cement	03:07:02	7
7	Shut Down	03:12:49	8
8	Drop Top Plug	03:13:33	9
9	Pump Displacement	03:14:08	10
10	Slow Rate	03:23:55	11
11	Bump Plug	03:28:30	12
12	Check Floats	03:30:40	13
13	Shut In Well	03:34:06	14
14	End Job	03:34:27	

Customer: Bill Barrett	Job Date: 09-Apr-2011	Sales Order #: 8089213
Well Description: CB-TG Land 21B-20-692	Job Type: Surface	ADC Used: Yes
Company Rep: Josh Henderson	Cement Supervisor: Jeff Caldwell	Elite #: 5/Jesse Slaughter