
BILL BARRETT CORPORATION E-BILL

**CB-TG LAND 11A-20-692
MAMM CREEK
Garfield County , Colorado**

Cement Surface Casing
08-Apr-2011

Post Job Summary

The Road to Excellence Starts with Safety

Sold To #: 343492	Ship To #: 2847529	Quote #:	Sales Order #: 8089300
Customer: BILL BARRETT CORPORATION E-BILL		Customer Rep: South, Jodi	
Well Name: CB-TG LAND		Well #: 11A-20-692	API/UWI #: 05-045-19751
Field: MAMM CREEK	City (SAP): SILT	County/Parish: Garfield	State: Colorado
Lat: N 39.518 deg. OR N 39 deg. 31 min. 3.173 secs.		Long: W 107.69 deg. OR W -108 deg. 18 min. 35.312 secs.	
Contractor: Pro Petro		Rig/Platform Name/Num: Pro Petro	
Job Purpose: Cement Surface Casing			
Well Type: Development Well		Job Type: Cement Surface Casing	
Sales Person: METLI, MARSHALL		Srvc Supervisor: CALDWELL, JEFFREY	MBU ID Emp #: 369111

Job Personnel

HES Emp Name	Exp Hrs	Emp #	HES Emp Name	Exp Hrs	Emp #	HES Emp Name	Exp Hrs	Emp #
CALDWELL, JEFFREY S	4	369111	SLAUGHTER, JESSE Dean	4	454315	YOUNG, JEREMY R	4	418013

Equipment

HES Unit #	Distance-1 way	HES Unit #	Distance-1 way	HES Unit #	Distance-1 way	HES Unit #	Distance-1 way
10783493	120 mile	10951249	120 mile	11027039	120 mile	11560046	120 mile
11562538	120 mile						

Job Hours

Date	On Location Hours	Operating Hours	Date	On Location Hours	Operating Hours	Date	On Location Hours	Operating Hours
04-08-11	4	1						

TOTAL Total is the sum of each column separately

Job

Job Times

Formation Name	Top	Bottom	Called Out	Date	Time	Time Zone
Form Type		BHST	On Location	08 - Apr - 2011	14:00	MST
Job depth MD	835.4 ft	Job Depth TVD	835.4 ft	Job Started	08 - Apr - 2011	15:58
Water Depth		Wk Ht Above Floor	4. ft	Job Completed	08 - Apr - 2011	16:44
Perforation Depth (MD)	<i>From</i>	<i>To</i>	Departed Loc	08 - Apr - 2011	18:00	MST

Well Data

Description	New / Used	Max pressure psig	Size in	ID in	Weight lbm/ft	Thread	Grade	Top MD ft	Bottom MD ft	Top TVD ft	Bottom TVD ft
12 1/4" Open Hole				12.25				.	800.		
9 5/8" Surface Casing	New		9.625	8.921	36.		J-55	.	800.		

Sales/Rental/3rd Party (HES)

Description	Qty	Qty uom	Depth	Supplier
PLUG,CMTG, TOP, 9 5/8, HWE, 8.16 MIN/9.06 MA	1	EA		

Tools and Accessories

Type	Size	Qty	Make	Depth	Type	Size	Qty	Make	Depth	Type	Size	Qty	Make
Guide Shoe					Packer					Top Plug	9.625	1	
Float Shoe					Bridge Plug					Bottom Plug			
Float Collar					Retainer					SSR plug set			
Insert Float										Plug Container	9.625	1	
Stage Tool										Centralizers			

Miscellaneous Materials

Gelling Agt	Conc	Surfactant	Conc	Acid Type	Qty	Conc	%
Treatment Fld	Conc	Inhibitor	Conc	Sand Type	Size	Conc	Qty

Fluid Data									
Stage/Plug #: 1									
Fluid #	Stage Type	Fluid Name	Qty	Qty uom	Mixing Density lbm/gal	Yield ft ³ /sk	Mix Fluid Gal/sk	Rate bbl/min	Total Mix Fluid Gal/sk
1	Water Spacer		20	bbl	.	.0	.0	5.0	
2	VersaCem Lead Cement	VERSACEM (TM) SYSTEM (452010)	120	sacks	12.3	2.38	13.75	5	13.75
	13.75 Gal	FRESH WATER							
3	SwiftCem Tail Cement	SWIFTCEM (TM) SYSTEM (452990)	120	sacks	14.2	1.43	6.85	5	6.85
	6.85 Gal	FRESH WATER							
4	Displacement		60.9	bbl	.	.0	.0	5.0	
Calculated Values		Pressures		Volumes					
Displacement	60.9	Shut In: Instant		Lost Returns		Cement Slurry	81.5	Pad	
Top Of Cement	SURFACE	5 Min		Cement Returns	25	Actual Displacement	60.9	Treatment	
Frac Gradient		15 Min		Spacers	20	Load and Breakdown		Total Job	160
Rates									
Circulating		Mixing	5	Displacement	5	Avg. Job	5		
Cement Left In Pipe	Amount	49.65 ft	Reason	Shoe Joint					
Frac Ring # 1 @	ID	Frac ring # 2 @	ID	Frac Ring # 3 @	ID	Frac Ring # 4 @	ID		
The Information Stated Herein Is Correct				Customer Representative Signature					

The Road to Excellence Starts with Safety

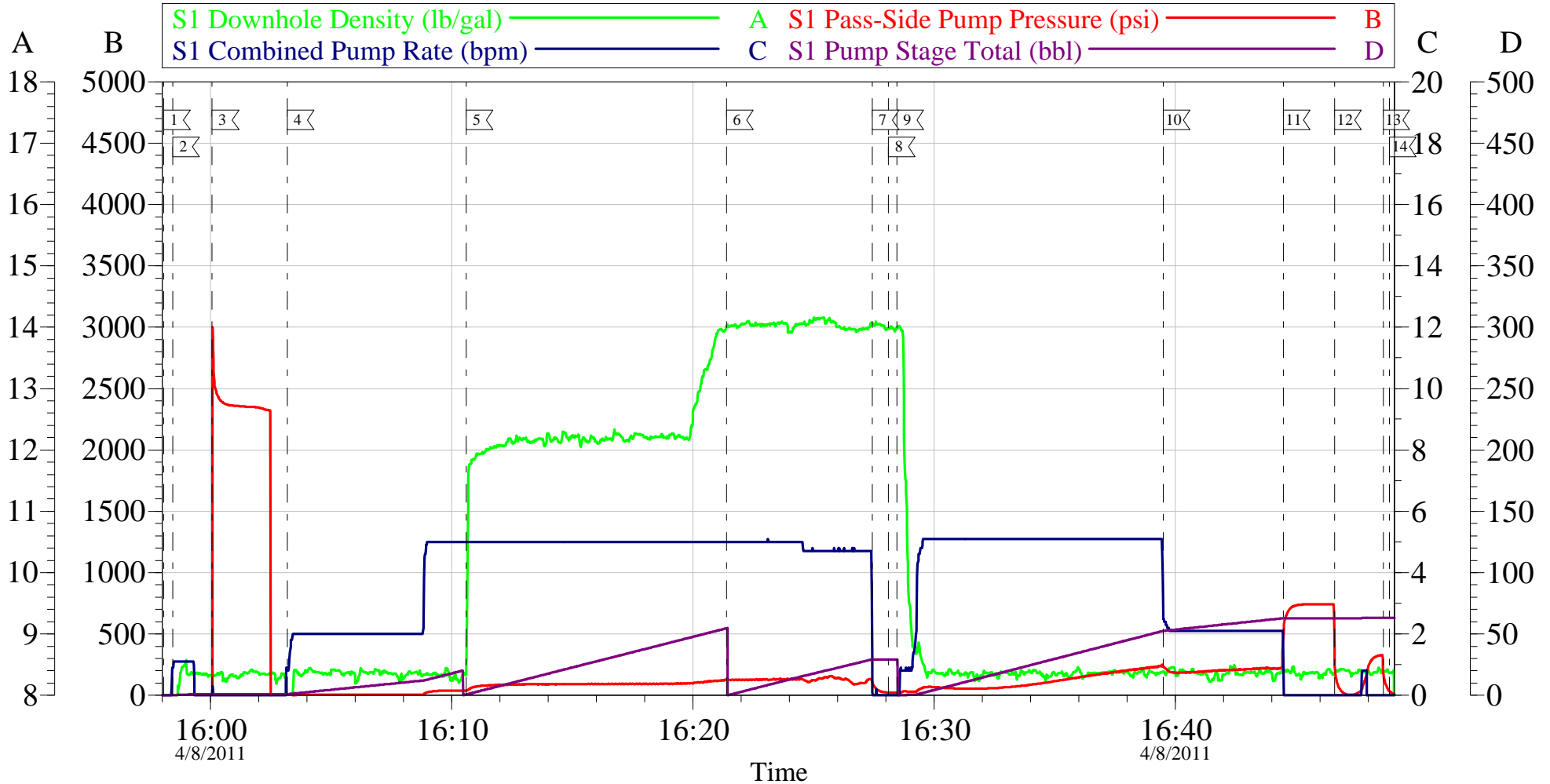
Sold To #: 343492	Ship To #: 2847529	Quote #:	Sales Order #: 8089300
Customer: BILL BARRETT CORPORATION E-BILL		Customer Rep: South, Jodi	
Well Name: CB-TG LAND		Well #: 11A-20-692	API/UWI #: 05-045-19751
Field: MAMM CREEK	City (SAP): SILT	County/Parish: Garfield	State: Colorado
Legal Description:			
Lat: N 39.518 deg. OR N 39 deg. 31 min. 3.173 secs.		Long: W 107.69 deg. OR W -108 deg. 18 min. 35.312 secs.	
Contractor: Pro Petro		Rig/Platform Name/Num: Pro Petro	
Job Purpose: Cement Surface Casing			Ticket Amount:
Well Type: Development Well		Job Type: Cement Surface Casing	
Sales Person: METLI, MARSHALL		Srvc Supervisor: CALDWELL, JEFFREY	
MBU ID Emp #: 369111			

Activity Description	Date/Time	Cht #	Rate bbl/min	Volume bbl		Pressure psig		Comments
				Stage	Total	Tubing	Casing	
Call Out	04/08/2011 10:00							ELITE #5
Pre-Convoy Safety Meeting	04/08/2011 11:45							ALL PERSONNEL ASSOCIATED WITH JOB ATTENDED.
Crew Leave Yard	04/08/2011 12:00							
Arrive At Loc	04/08/2011 14:00							CASING WAS STILL BEING RUN.
Safety Meeting	04/08/2011 14:05							ALL PERSONNEL ASSOCIATED WITH JOB ATTENDED.
Rig-Up Equipment	04/08/2011 14:15							
Pre-Job Safety Meeting	04/08/2011 15:30							ALL PERSONNEL ASSOCIATED WITH JOB ATTENDED.
Start Job	04/08/2011 15:58							TP:835.65 SJ:46.95 12 1/4" OH
Prime Pumps	04/08/2011 15:58		1	1			.0	H2O
Test Lines	04/08/2011 16:00					2300.0		TEST GOOD
Pump Spacer	04/08/2011 16:03		5	20			37.0	H2O
Pump Lead Cement	04/08/2011 16:10		5	50.9			126.0	120 SKS 12.3 PPG 2.38 CUFT/SAK 13.75 GAL/SAK
Pump Tail Cement	04/08/2011 16:21		5	30.6			150.0	120 SKS 14.2 PPG 1.43 CUFT/SAK 6.85 GAL/SAK
Shutdown	04/08/2011 16:27							
Drop Top Plug	04/08/2011 16:28							PLUG AWAY

Activity Description	Date/Time	Cht #	Rate bbl/min	Volume bbl		Pressure psig		Comments
				Stage	Total	Tubing	Casing	
Pump Displacement	04/08/2011 16:28		5	60.9			220.0	H2O
Slow Rate	04/08/2011 16:39		2	50			187.0	
Bump Plug	04/08/2011 16:44		2	60.9			752.0	PLUG BUMPED.
Check Floats	04/08/2011 16:46							FLOATS HELD, 1/4 BBL BACK. ESTABLISHED CIRCULATION 28 BBLS INTO TAIL CEMENT.
Other	04/08/2011 16:48							SHUT IN 350 PSI ON WELL.
End Job	04/08/2011 16:48							
Post-Job Safety Meeting (Pre Rig-Down)	04/08/2011 16:55							ALL PERSONNEL ASSOCIATED WITH JOB ATTENDED.
Rig-Down Equipment	04/08/2011 17:00							
Crew Leave Location	04/08/2011 18:00							

BILL BARRETT

CB-TG Land 11A-20-692 Surface



Local Event Log					
1	Start Job	15:58:03	2	Prime Lines	15:58:25
3	Test Lines	16:00:04	4	Pump H2O Spacer	16:03:11
5	Pump Lead Cement	16:10:36	6	Pump Tail Cement	16:21:24
7	Shut Down	16:27:26	8	Drop Top Plug	16:28:06
9	Pump Displacement	16:28:27	10	Slow Rate	16:39:30
11	Bump Plug	16:44:28	12	Check Floats	16:46:36
13	Shut In Well	16:48:36	14	End Job	16:48:52

Customer: Bill Barrett	Job Date: 08-Apr-2011	Sales Order #: 8089300
Well Description: CB-TG Land 11A-20-692	Job Type: Surface	ADC Used: Yes
Company Rep: Josh Henderson	Cement Supervisor: Jeff Caldwell	Elite #: 5/Jesse Slaughter