
BILL BARRETT CORPORATION E-BILL

**CB-TG LAND 11D-20-692
MAMM CREEK
Garfield County , Colorado**

Cement Surface Casing
11-Apr-2011

Post Job Report

The Road to Excellence Starts with Safety

Sold To #: 343492		Ship To #: 2847501		Quote #:		Sales Order #: 8089611	
Customer: BILL BARRETT CORPORATION E-BILL				Customer Rep: South, Jody			
Well Name: CB-TG LAND			Well #: 11D-20-692			API/UWI #: 05-045-19757	
Field: MAMM CREEK		City (SAP): SILT		County/Parish: Garfield			State: Colorado
Lat: N 39.518 deg. OR N 39 deg. 31 min. 3.932 secs.				Long: W 107.69 deg. OR W -108 deg. 18 min. 35.032 secs.			
Contractor: Pro Petro			Rig/Platform Name/Num: Pro Petro				
Job Purpose: Cement Surface Casing							
Well Type: Development Well			Job Type: Cement Surface Casing				
Sales Person: METLI, MARSHALL			Srvc Supervisor: CALDWELL, JEFFREY			MBU ID Emp #: 369111	

Job Personnel

HES Emp Name	Exp Hrs	Emp #	HES Emp Name	Exp Hrs	Emp #	HES Emp Name	Exp Hrs	Emp #
CALDWELL, JEFFREY S	5	369111	SLAUGHTER, JESSE Dean	5	454315	YOUNG, JEREMY R	5	418013

Equipment

HES Unit #	Distance-1 way	HES Unit #	Distance-1 way	HES Unit #	Distance-1 way	HES Unit #	Distance-1 way
10713212	120 mile	10897849	120 mile	10951249	120 mile	11560046	120 mile
11562538	120 mile						

Job Hours

Date	On Location Hours	Operating Hours	Date	On Location Hours	Operating Hours	Date	On Location Hours	Operating Hours
04-11-11	5	1						
TOTAL			Total is the sum of each column separately					

Job

Formation Name	Job	Date	Time	Time Zone
Formation Depth (MD)	Top Bottom	Called Out	11 - Apr - 2011	02:00 MST
Form Type	BHST	On Location	11 - Apr - 2011	07:00 MST
Job depth MD	837.8 ft	Job Depth TVD	837.8 ft	Job Started
Water Depth		Wk Ht Above Floor	4. ft	Job Completed
Perforation Depth (MD)	From To	Departed Loc	11 - Apr - 2011	12:00 MST

Well Data

Description	New / Used	Max pressure psig	Size in	ID in	Weight lbm/ft	Thread	Grade	Top MD ft	Bottom MD ft	Top TVD ft	Bottom TVD ft
-------------	------------	-------------------	---------	-------	---------------	--------	-------	-----------	--------------	------------	---------------

Tools and Accessories

Type	Size	Qty	Make	Depth	Type	Size	Qty	Make	Depth	Type	Size	Qty	Make
Guide Shoe					Packer					Top Plug	9.625	1	
Float Shoe					Bridge Plug					Bottom Plug			
Float Collar					Retainer					SSR plug set			
Insert Float										Plug Container	9.625	1	
Stage Tool										Centralizers			

Miscellaneous Materials

Gelling Agt	Conc	Surfactant	Conc	Acid Type	Qty	Conc	%
Treatment Fld	Conc	Inhibitor	Conc	Sand Type	Size	Qty	

Fluid Data

Stage/Plug #: 1										
Fluid #	Stage Type	Fluid Name	Qty	Qty uom	Mixing Density lbm/gal	Yield ft3/sk	Mix Fluid Gal/sk	Rate bbl/min	Total Mix Fluid Gal/sk	

Stage/Plug #: 1										
Fluid #	Stage Type	Fluid Name	Qty	Qty uom	Mixing Density lbm/gal	Yield ft ³ /sk	Mix Fluid Gal/sk	Rate bbl/min	Total Mix Fluid Gal/sk	
1	Water Spacer		20	bbl	.	.0	.0	5.0		
2	VersaCem Lead Cement	VERSACEM (TM) SYSTEM (452010)	120	sacks	12.3	2.38	13.75	5	13.75	
	13.75 Gal	FRESH WATER								
3	SwiftCem Tail Cement	SWIFTCEM (TM) SYSTEM (452990)	120	sacks	14.2	1.43	6.85	5	6.85	
	6.85 Gal	FRESH WATER								
4	Displacement		61.1	bbl	.	.0	.0	5.0		
Calculated Values		Pressures		Volumes						
Displacement	61.1	Shut In: Instant		Lost Returns		Cement Slurry	81.5	Pad		
Top Of Cement	SURFACE	5 Min		Cement Returns	23	Actual Displacement	61.1	Treatment		
Frac Gradient		15 Min		Spacers	20	Load and Breakdown		Total Job	163	
Rates										
Circulating		Mixing	5	Displacement	5	Avg. Job			5	
Cement Left In Pipe	Amount	46.95 ft	Reason	Shoe Joint						
Frac Ring # 1 @	ID		Frac ring # 2 @	ID		Frac Ring # 3 @	ID		Frac Ring # 4 @	ID
The Information Stated Herein Is Correct				Customer Representative Signature						

The Road to Excellence Starts with Safety

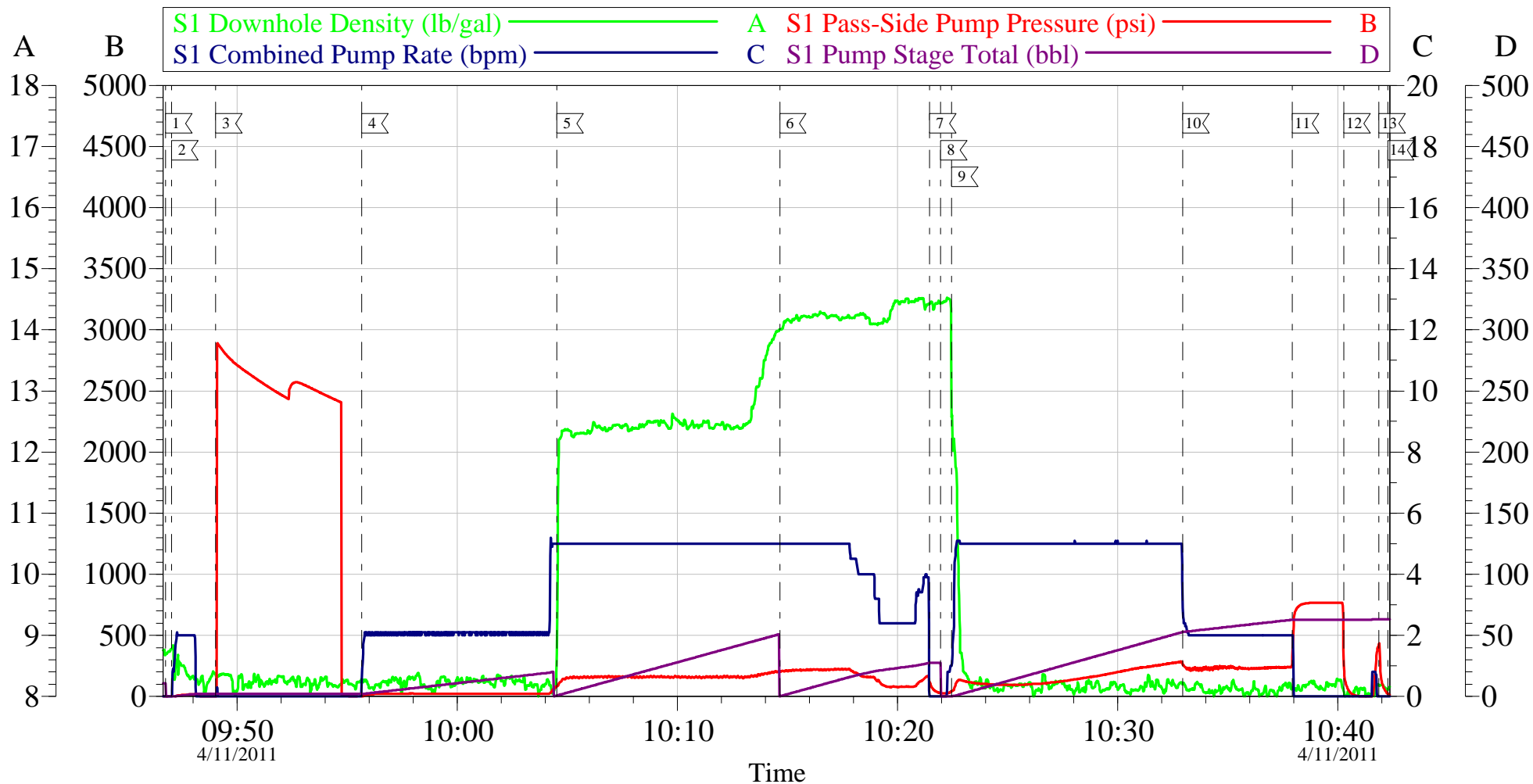
Sold To #: 343492		Ship To #: 2847501		Quote #:		Sales Order #: 8089611	
Customer: BILL BARRETT CORPORATION E-BILL				Customer Rep: South, Jody			
Well Name: CB-TG LAND			Well #: 11D-20-692			API/UWI #: 05-045-19757	
Field: MAMM CREEK		City (SAP): SILT		County/Parish: Garfield			State: Colorado
Legal Description:							
Lat: N 39.518 deg. OR N 39 deg. 31 min. 3.932 secs.				Long: W 107.69 deg. OR W -108 deg. 18 min. 35.032 secs.			
Contractor: Pro Petro			Rig/Platform Name/Num: Pro Petro				
Job Purpose: Cement Surface Casing						Ticket Amount:	
Well Type: Development Well			Job Type: Cement Surface Casing				
Sales Person: METLI, MARSHALL			Srv Supervisor: CALDWELL, JEFFREY			MBU ID Emp #: 369111	

Activity Description	Date/Time	Cht #	Rate bbl/min	Volume bbl		Pressure psig		Comments
				Stage	Total	Tubing	Casing	
Call Out	04/11/2011 02:00							ELITE #5
Pre-Convoy Safety Meeting	04/11/2011 04:00							ALL PERSONNEL ASSOCIATED WITH JOB ATTENDED.
Crew Leave Yard	04/11/2011 04:15							
Arrive At Loc	04/11/2011 07:00							CASING WAS BEING RUN.
Safety Meeting	04/11/2011 07:05							ALL PERSONNEL ASSOCIATED WITH JOB ATTENDED.
Rig-Up Equipment	04/11/2011 07:15							
Pre-Job Safety Meeting	04/11/2011 09:15							ALL PERSONNEL ASSOCIATED WITH JOB ATTENDED.
Start Job	04/11/2011 09:46							TP:837.75', SJ:46.95', 12 1/4" OH
Prime Pumps	04/11/2011 09:47		2	2			22.0	H2O
Test Lines	04/11/2011 09:49					2600.0		TEST GOOD
Pump Spacer	04/11/2011 09:55		5	20			57.0	H2O
Pump Lead Cement	04/11/2011 10:04		5	50.9			200.0	120 SKS 12.3 PPG 2.38 CUFT/SAK 13.75 GAL/SAK
Pump Tail Cement	04/11/2011 10:14		5	30.6			165.0	120 SKS 14.2 PPG 1.43 CUFT/SAK 6.85 GAL/SAK
Shutdown	04/11/2011 10:21							
Drop Top Plug	04/11/2011 10:21							PLUG AWAY

Activity Description	Date/Time	Cht #	Rate bbl/ min	Volume bbl		Pressure psig		Comments
				Stage	Total	Tubing	Casing	
Pump Displacement	04/11/2011 10:22		5	61.1			252.0	H2O
Slow Rate	04/11/2011 10:32		2	51			220.0	
Bump Plug	04/11/2011 10:37		5	61.1			760.0	PLUG BUMPED
Check Floats	04/11/2011 10:40							FLOATS HELD 1/4 BBL BACK. ESTABLISHED CIRCULATION 23 BBLS INTO TAIL.
Other	04/11/2011 10:41							SHUT IN 350 PSI ON WELL.
End Job	04/11/2011 10:42							23 BBLS OF CEMENT TO SURFACE.
Post-Job Safety Meeting (Pre Rig-Down)	04/11/2011 10:44							ALL PERSONNEL ASSOCIATED WITH JOB ATTENDED.
Rig-Down Equipment	04/11/2011 10:50							
Crew Leave Location	04/11/2011 12:00							THANK YOU FOR CHOOSING HALLIBURTON, JEFF CALDWELL AND CREW.

BILL BARRETT

CB-TG Land 11D-20-692 Surface



Local Event Log					
1	Start Job	09:46:45	2	Prime Lines	09:47:02
3	Test Lines	09:49:01	4	Pump H2O Spacer	09:55:40
5	Pump Lead Cement	10:04:31	6	Pump Tail Cement	10:14:39
7	Shut Down	10:21:27	8	Drop Top Plug	10:21:57
9	Pump Displacement	10:22:27	10	Slow Rate	10:32:58
11	Bump Plug	10:37:57	12	Check Floats	10:40:17
13	Shut In Well	10:41:53	14	End Job	10:42:16

Customer:	Job Date:	11-Apr-2011	Sales Order #:	8089611
Well Description:	Job Type:		ADC Used:	
Company Rep:	Cement Supervisor:		Elite #:	