
NOBLE ENERGY INC E-BUSINESS

**HYRUP 11-31A
GRAND VALLEY
Garfield County , Colorado**

Cement Surface Casing
27-Oct-2010

Post Job Report

The Road to Excellence Starts with Safety

Sold To #: 345242		Ship To #: 2815475		Quote #:		Sales Order #: 7731878	
Customer: NOBLE ENERGY INC E-BUSINESS				Customer Rep: NEILSON, DAVE			
Well Name: HYRUP			Well #: 11-31A		API/UWI #: 05-045-14059		
Field: GRAND VALLEY		City (SAP): PARACHUTE		County/Parish: Garfield		State: Colorado	
Lat: N 39.373 deg. OR N 39 deg. 22 min. 22.429 secs.				Long: W 108.073 deg. OR W -109 deg. 55 min. 37.193 secs.			
Contractor: H&P Drilling			Rig/Platform Name/Num: H&P 322				
Job Purpose: Cement Surface Casing							
Well Type: Development Well				Job Type: Cement Surface Casing			
Sales Person: METLI, MARSHALL			Srvc Supervisor: LEIST, JAMES			MBU ID Emp #: 362787	
Job Personnel							
HES Emp Name	Exp Hrs	Emp #	HES Emp Name	Exp Hrs	Emp #	HES Emp Name	Exp Hrs
anglestein, troy	3	436099	GAMBLE, BENJAMIN T	3	446666	JENSEN, JESSE Robert	3
LEIST, JAMES R	3	362787					
Equipment							
HES Unit #	Distance-1 way	HES Unit #	Distance-1 way	HES Unit #	Distance-1 way	HES Unit #	Distance-1 way
10592964	60 mile	10744549	60 mile	11259882	60 mile	11360883	60 mile
Job Hours							
Date	On Location Hours	Operating Hours	Date	On Location Hours	Operating Hours	Date	On Location Hours
10-27-10	4	2					
TOTAL			<i>Total is the sum of each column separately</i>				
Job				Job Times			
Formation Name				Date	Time	Time Zone	
Formation Depth (MD)	Top	Bottom		Called Out	27 - Oct - 2010	16:00	MST
Form Type	BHST			On Location	27 - Oct - 2010	19:00	MST
Job depth MD	15140. ft	Job Depth TVD	1514. ft	Job Started	27 - Oct - 2010	22:53	MST
Water Depth		Wk Ht Above Floor	. ft	Job Completed	27 - Oct - 2010	23:51	MST
Perforation Depth (MD)	From	To		Departed Loc	28 - Oct - 2010	02:00	MST
Well Data							
Description	New / Used	Max pressure psig	Size in	ID in	Weight lbm/ft	Thread	Grade
Sales/Rental/3rd Party (HES)							
Description				Qty	Qty uom	Depth	Supplier
PLUG,CMTG,TOP,8 5/8,HWE,7.20 MIN/8.09 MA				1	EA		
R/A DENSOMETER W/CHART RECORDER,/JOB,ZI				1	JOB		
PORT. DAS W/CEMWIN;ACQUIRE W/HES, ZI				1	JOB		
ADC (AUTO DENSITY CTRL) SYS, /JOB,ZI				1	JOB		
Tools and Accessories							
Type	Size	Qty	Make	Depth	Type	Size	Qty
Guide Shoe					Packer		
Float Shoe					Bridge Plug		
Float Collar					Retainer		
Insert Float							
Stage Tool							
Miscellaneous Materials							
Gelling Agt		Conc		Surfactant		Conc	
Treatment Fld		Conc		Inhibitor		Conc	
						Acid Type	
						Sand Type	
						Qty	
						Conc	%
						Size	
						Qty	

Fluid Data									
Stage/Plug #: 1									
Fluid #	Stage Type	Fluid Name	Qty	Qty uom	Mixing Density lbm/gal	Yield ft ³ /sk	Mix Fluid Gal/sk	Rate bbl/min	Total Mix Fluid Gal/sk
1	Water Spacer		20.00	bbl	8.33	.0	.0	.0	
2	Lead Cement	VERSACEM (TM) SYSTEM (452010)	209.0	sacks	12.3	2.38	13.75		13.75
		13.75 Gal	FRESH WATER						
3	Tail Cement	VERSACEM (TM) SYSTEM (452010)	126.0	sacks	12.8	2.11	11.75		11.75
		11.75 Gal	FRESH WATER						
4	Displacement		93.00	bbl	8.33	.0	.0	.0	
Calculated Values		Pressures		Volumes					
Displacement	93	Shut In: Instant		Lost Returns	0	Cement Slurry	156	Pad	
Top Of Cement	SURFACE	5 Min		Cement Returns	8	Actual Displacement	93	Treatment	
Frac Gradient		15 Min		Spacers	20	Load and Breakdown		Total Job	
Rates									
Circulating		Mixing	6	Displacement	6	Avg. Job			
Cement Left In Pipe	Amount	38.03 ft	Reason	Shoe Joint					
Frac Ring # 1 @	ID	Frac ring # 2 @	ID	Frac Ring # 3 @	ID	Frac Ring # 4 @	ID		
The Information Stated Herein Is Correct				Customer Representative Signature					

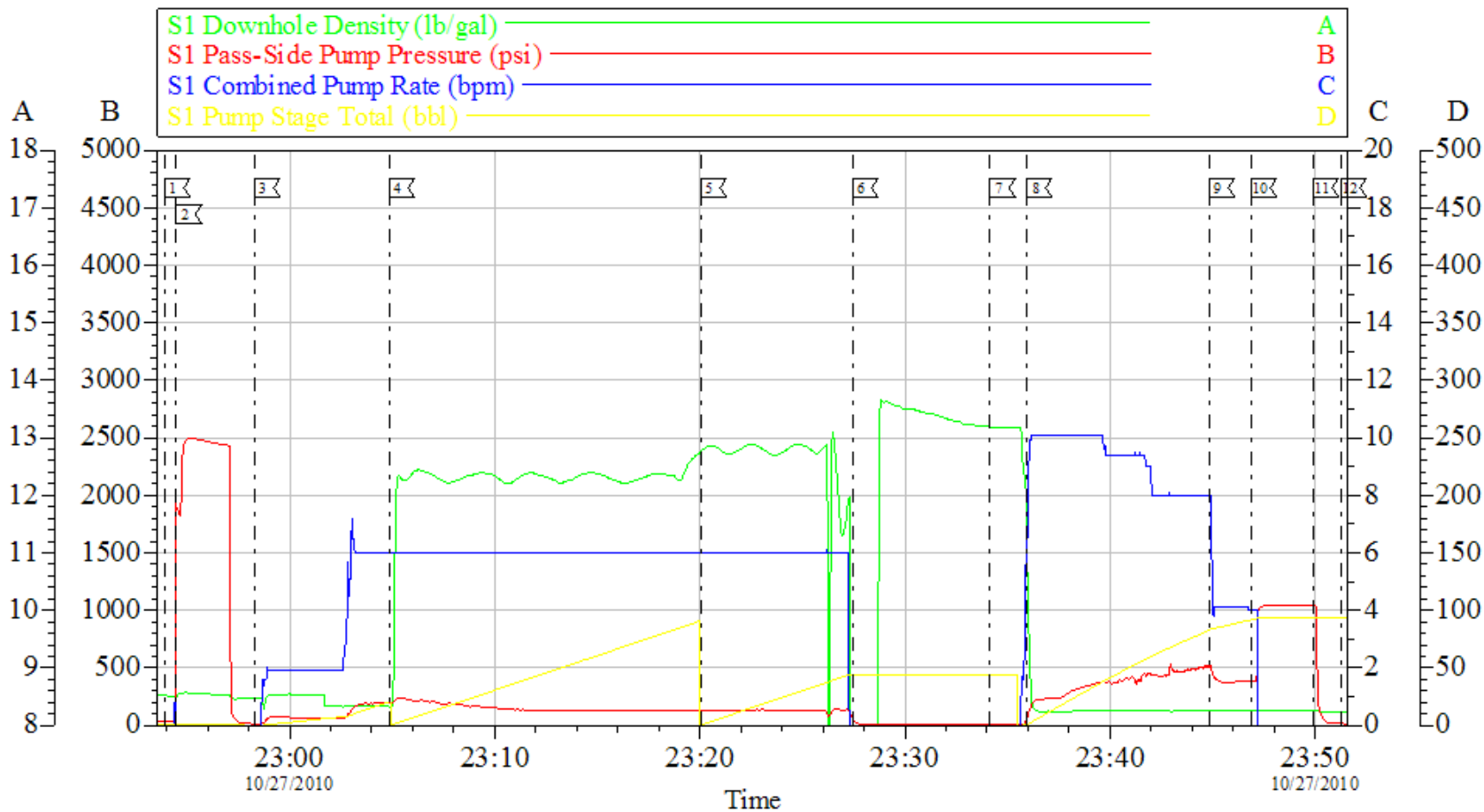
The Road to Excellence Starts with Safety

Sold To #: 345242	Ship To #: 2815475	Quote #:	Sales Order #: 7731878
Customer: NOBLE ENERGY INC E-BUSINESS		Customer Rep: NEILSON, DAVE	
Well Name: HYRUP	Well #: 11-31A	API/UWI #: 05-045-14059	
Field: GRAND VALLEY	City (SAP): PARACHUTE	County/Parish: Garfield	State: Colorado
Legal Description:			
Lat: N 39.373 deg. OR N 39 deg. 22 min. 22.429 secs.		Long: W 108.073 deg. OR W -109 deg. 55 min. 37.193 secs.	
Contractor: H&P Drilling		Rig/Platform Name/Num: H&P 322	
Job Purpose: Cement Surface Casing			Ticket Amount:
Well Type: Development Well		Job Type: Cement Surface Casing	
Sales Person: METLI, MARSHALL		Srvc Supervisor: LEIST, JAMES	MBU ID Emp #: 362787

Activity Description	Date/Time	Cht #	Rate bbl/min	Volume bbl		Pressure psig		Comments
				Stage	Total	Tubing	Casing	
Call Out	10/27/2010 16:00							TP- 1514, TD-1545, S.J.-38.03, HOLE-12 1/4, MUD#9.5
Pre-Convoy Safety Meeting	10/27/2010 17:30							WITH ALL HES PERSONNEL
Crew Leave Yard	10/27/2010 17:45							RIG CIRCULATED FOR 1 HOUR PRIOR TO CMT JOB
Arrive At Loc	10/27/2010 19:30							STILL RUNNING CASING
Assessment Of Location Safety Meeting	10/27/2010 19:45							WITH ALL HES PERSONNEL
Pre-Rig Up Safety Meeting	10/27/2010 21:10							WITH ALL HES PERSONNEL
Rig-Up Completed	10/27/2010 21:50							JOB PUMPED OFF LINE, USING SWEDGE TO PUMP THROUGH
Pre-Job Safety Meeting	10/27/2010 22:40							WITH ALL ON LOCATION PERSONNEL
Start Job	10/27/2010 22:53							GOOD CIRULATION THROUGHOUT JOB, NO PIPE MOVEMENT DURING JOB
Pressure Test	10/27/2010 22:54							2480 PSI
Pump Spacer 1	10/27/2010 22:58		6	20			190.0	FRESH WATER
Pump Lead Cement	10/27/2010 23:04		6	88.2			130.0	209 SKS, 12.3 PPG, 2.38 FT3/SK, 13.75 GAL/SK
Pump Tail Cement	10/27/2010 23:20		6	47			130.0	126 SKS, 12.8 PPG, 2.11 FT3/SK, 11.75 GAL/SK
Drop Top Plug	10/27/2010 23:34							AWAY

Activity Description	Date/Time	Cht #	Rate bbl/ min	Volume bbl		Pressure psig		Comments
				Stage	Total	Tubing	Casing	
Pump Displacement	10/27/2010 23:35		10	93			500.0	FRESH WATER
Shutdown	10/27/2010 23:44							
Slow Rate	10/27/2010 23:44		4	83			470.0	TO BUMP PLUG
Bump Plug	10/27/2010 23:46		4	93			510.0	PLUG BUMPED
Check Floats	10/27/2010 23:49						1049.0	THE FLOATS ARE HOLDING
End Job	10/27/2010 23:51							
Pre-Rig Down Safety Meeting	10/27/2010 23:55							WITH ALL HES PERSONNEL
Rig-Down Completed	10/28/2010 01:30							
Pre-Convoy Safety Meeting	10/28/2010 01:45							WITH ALL HES PERSONNEL
Crew Leave Location	10/28/2010 02:00							
Comment	10/28/2010 02:00							THANKYOU FOR USING HALLIBURTON CEMENT, JAMES LEIST AND CREW

NOBLE 9 5/8 SURFACE CASING



Customer: NOBLE
Well Description: HYRUP
Company Rep: DEVON ROBERTS

Job Date: 27-Oct-2010
Job Type: SURFACE
Cement Supervisor: JAMES LEIST

Sales Order #: 7731878
ADC Used: YES
Elite #:7 TRACY GAMBLE

HALLIBURTON
OptiCem v6.3.4
28-Oct-10 00:07