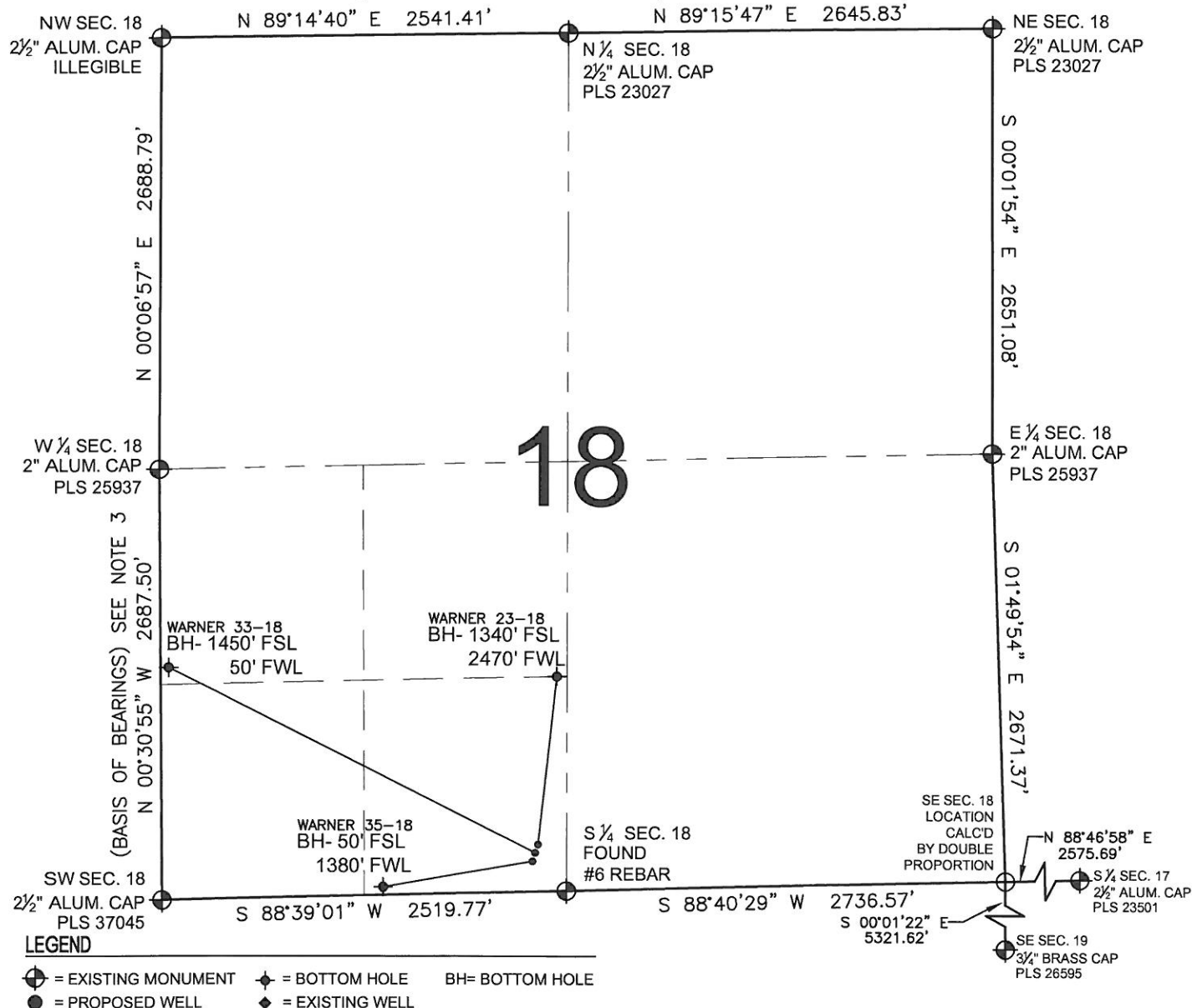


# PAD DRAWING - WARNER 3 PAD

## SECTION 18, TOWNSHIP 2 NORTH, RANGE 65 WEST, 6TH P.M.

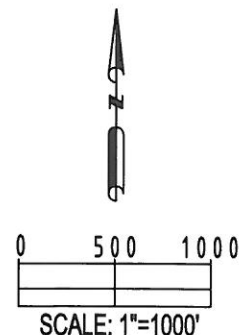


### NOTES:

- THIS SURVEY WAS DONE BY GPS METHODS AND CONFORMS TO THE MINIMUM STANDARDS SET BY THE C.O.G.C.C., RULE NO. 215
- ELEVATIONS SHOWN AT THE WELL HEAD, AS WELL AS HORIZONTAL CONTROL, ARE BASED ON GPS-RTK VALUES DERIVED FROM DOING 2-HOUR STATIC GPS SESSIONS AND REDUCTIONS USING O.P.U.S. SOLUTIONS.  
VERTICAL = NAVD88; HORIZONTAL = NAD83/92
- THE BEARINGS SHOWN HEREON ARE BASED ON GPS OBSERVATIONS BETWEEN THE MONUMENTS SHOWN HEREON AS FOUND ON THE FIELD DATE BELOW.
- DISTANCES SHOWN ARE AT GROUND LEVEL, AS MEASURED IN THE FIELD, WITH TIES TO WELLS MEASURED AT A PERPENDICULAR TO SECTION LINES.

### NOTES:

WARNER 35-18 TO BE AT 227' FSL, 2323' FWL.  
BOTTOM HOLE AT 50' FSL & 1380' FWL.  
WARNER 33-18 TO BE AT 242' FSL, 2328' FWL.  
BOTTOM HOLE AT 1450' FSL & 50' FWL.  
WARNER 23-18 TO BE AT 258' FSL, 2333' FWL.  
BOTTOM HOLE AT 1340' FSL & 2470' FWL.



REVISIONS		PREPARED BY:  <b>PFS</b> Petroleum Field Services, LLC 1801 W. 13th Ave. Denver, CO 80204
INITIAL	DATE	

KERR-MCGEE OIL & GAS ONSHORE LP

FIELD DATE: 10-27-10	PAD NAME: WARNER 3 PAD
DRAWING DATE: 11-09-10	SURFACE LOCATION:
BY: SMF	WELD COUNTY, COLORADO SE 1/4 SW 1/4, SEC. 18, T2N, R65W