

The Road to Excellence Starts with Safety

Sold To #: 305440	Ship To #: UNKNOWN	Quote #:	Sales Order #: 7669559
Customer: SLAWSON COMPANIES		Customer Rep: Don Patton	
Well Name: Joker		Well #: 36-9-62	API/UWI #:
Field: WILDCAT	City (SAP): UNKNOWN	County/Parish: Weld	State: Colorado
Contractor: ENSIGN		Rig/Platform Name/Num: 3D	
Job Purpose: Cement Surface Casing			
Well Type: Development Well		Job Type: Cement Surface Casing	
Sales Person: FLING, MATTHEW		Srvc Supervisor: WHEELER, JUSTIN	MBU ID Emp #: 196470

Job Personnel

HES Emp Name	Exp Hrs	Emp #	HES Emp Name	Exp Hrs	Emp #	HES Emp Name	Exp Hrs	Emp #
JACKSON, JESSE James	4	477854	MAHONEY, KELLAN Carl	4	476531	WHEELER, JUSTIN W	4	196470
WILEY, JAMES A	4	440080						

Equipment

HES Unit #	Distance-1 way	HES Unit #	Distance-1 way	HES Unit #	Distance-1 way	HES Unit #	Distance-1 way
10824253C	72 mile	10948694	72 mile	11036301	72 mile	11064046C	72 mile

Job Hours

Date	On Location Hours	Operating Hours	Date	On Location Hours	Operating Hours	Date	On Location Hours	Operating Hours
9-29-10	4	2						

TOTAL Total is the sum of each column separately

Job

Job Times

Formation Name					Date		Time	Time Zone			
Formation Depth (MD)		Top	Bottom		Called Out	29 - Sep - 2010	00:00	MST			
Form Type			BHST		On Location	29 - Sep - 2010	11:30	MST			
Job depth MD		841. ft		Job Depth TVD		841. ft	Job Started	29 - Sep - 2010	13:39	MST	
Water Depth				Wk Ht Above Floor			Job Completed	29 - Sep - 2010	14:37	MST	
Perforation Depth (MD)		From			To			Departed Loc	29 - Sep - 2010	15:30	MST

Well Data

Description	New / Used	Max pressure psig	Size in	ID in	Weight lbf/ft	Thread	Grade	Top MD ft	Bottom MD ft	Top TVD ft	Bottom TVD ft
Open Hole				12.25					860.		
Surface Casing	New		9.625	8.921	36.		J-55		841.		841.

Tools and Accessories

Type	Size	Qty	Make	Depth	Type	Size	Qty	Make	Depth	Type	Size	Qty	Make
Guide Shoe					Packer					Top Plug	9 5/8	1	W.F.
Float Shoe					Bridge Plug					Bottom Plug			
Float Collar					Retainer					SSR plug set			
Insert Float	9 5/8	1	W.F.	800'						Plug Container			
Stage Tool										Centralizers			

Miscellaneous Materials

Gelling Agt	Conc	Surfactant	Conc	Acid Type	Qty	Conc	%
Treatment Fld	Conc	Inhibitor	Conc	Sand Type	Size	Qty	

Fluid Data

Stage/Plug #: 1	Fluid #	Stage Type	Fluid Name	Qty	Qty uom	Mixing Density lbf/gal	Yield ft ³ /sk	Mix Fluid Gal/sk	Rate bbl/min	Total Mix Fluid Gal/sk
-----------------	---------	------------	------------	-----	---------	------------------------	---------------------------	------------------	--------------	------------------------

Stage/Plug #: 1									
Fluid #	Stage Type	Fluid Name	Qty	Qty uom	Mixing Density lbm/gal	Yield ft ³ /sk	Mix Fluid Gal/sk	Rate bbl/min	Total Mix Fluid Gal/sk
1	Dyed Water Spacer		62.00	bbl	8.4	.0	42.0	5.0	
2	Tail Cement 15.8#	CMT - STANDARD TYPE I / II CEMENT (101439798)	345.0	sacks	15.8	1.15	5.0	5.0	5.0
	94 lbm	TYPE I / II CEMENT, BULK (101439798)							
	2 %	CALCIUM CHLORIDE, PELLET, 50 LB (101509387)							
	0.125 lbm	POLY-E-FLAKE (101216940)							
	5 Gal	FRESH WATER							
Calculated Values		Pressures		Volumes					
Displacement	61.8	Shut In: Instant	700	Lost Returns	No	Cement Slurry	70.7	Pad	
Top Of Cement	Surface	5 Min		Cement Returns	11 bbls	Actual Displacement	61.8	Treatment	
Frac Gradient		15 Min		Spacers	62	Load and Breakdown		Total Job	
Rates									
Circulating		Mixing		Displacement		Avg. Job			
Cement Left In Pipe	Amount	40 ft	Reason	Shoe Joint					
Frac Ring # 1 @	ID	Frac ring # 2 @	ID	Frac Ring # 3 @	ID	Frac Ring # 4 @	ID		
The Information Stated Herein Is Correct				Customer Representative Signature					

The Road to Excellence Starts with Safety

Sold To #: 305440	Ship To #: UNKNOWN	Quote #:	Sales Order #: 7669559
Customer: SLAWSON COMPANIES		Customer Rep:	
Well Name: Joker	Well #: 36-9-62	API/UWI #:	
Field: WILDCAT	City (SAP): UNKNOWN	County/Parish: Weld	State: Colorado
Legal Description:			
Lat:		Long:	
Contractor: ENSIGN		Rig/Platform Name/Num: 3D	
Job Purpose: Cement Surface Casing			Ticket Amount:
Well Type: Development Well		Job Type: Cement Surface Casing	
Sales Person: FLING, MATTHEW		Srv Supervisor: WHEELER, JUSTIN	MBU ID Emp #: 196470

Activity Description	Date/Time	Cht #	Rate bbl/ min	Volume bbl		Pressure psig		Comments
				Stage	Total	Tubing	Casing	
Depart from Service Center or Other Site	09/29/2010 10:00							
Arrive At Loc	09/29/2010 11:30							
Safety Meeting - Pre Rig-Up	09/29/2010 13:00							
Test Lines	09/29/2010 13:41							
Circulate Well	09/29/2010 13:48		2	15			35.0	Established Circulation @ 15 bbls away
Pump Spacer	09/29/2010 13:48		4	62			60.0	Pump 10 bbls Dyed Water, and 52 bbls Fresh Water
Pump Cement	09/29/2010 14:02		6	70			110.0	Mix and Pump 345 sks Type I II Cement @ 15.8 lb/gal
Drop Plug	09/29/2010 14:15							
Pump Displacement - Start	09/29/2010 14:21		6.5	0			40.0	
Cement Returns to Surface	09/29/2010 14:28		4	50			400.0	11 bbls Cement to Surface
Pump Displacement - End	09/29/2010 14:34		2	61.8			700.0	
Bump Plug	09/29/2010 14:34		2	61.8			1150.0	
Check Floats	09/29/2010 14:36							Floats Holding
End Job	09/29/2010 14:37							
Safety Meeting - Pre Rig-Down	09/29/2010 15:00							
Safety Meeting - Departing Location	09/29/2010 15:30							

Sold To # : 305440

Ship To # : UNKNOWN

Quote # :

Sales Order # :

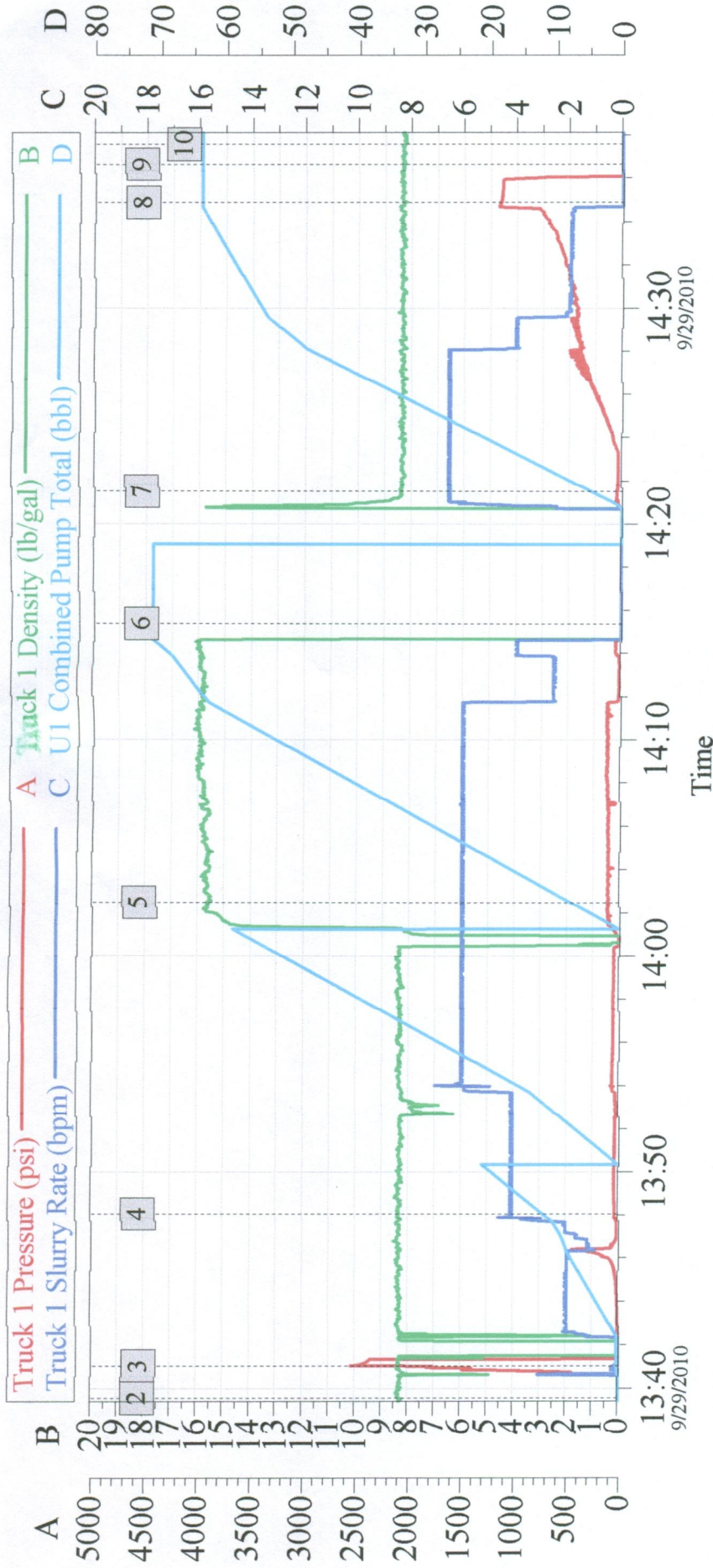
7669559

SUMMIT Version: 7.20.130

Wednesday, September 29, 2010 02:56:00

Slawson - Surface Casing

Joker - 36-9-62



Global Event Log

Intersection	TIP	T1SR	Intersection	TIP	T1SR
2 Start Job	13:39:33	-2.931	3 Test Lines	13:41:02	2076
4 Pump Fresh Water Spacer	13:48:03	35.06	5 Pump Cement	14:02:29	111.8
6 Shut-Down, Drop Plug	14:15:21	-12.49	7 Start Displacement	14:21:30	43.97
8 Land Plug	14:34:53	1153	9 Check Float, Float Holding	14:36:39	-15.42
10 End Job	14:37:35	-13.68			0.000

Customer: Slawson
Well Description: Joker, 36-9-62

Job Date: 29-Sep-2010
UWI:

Sales Order #: 7669559