

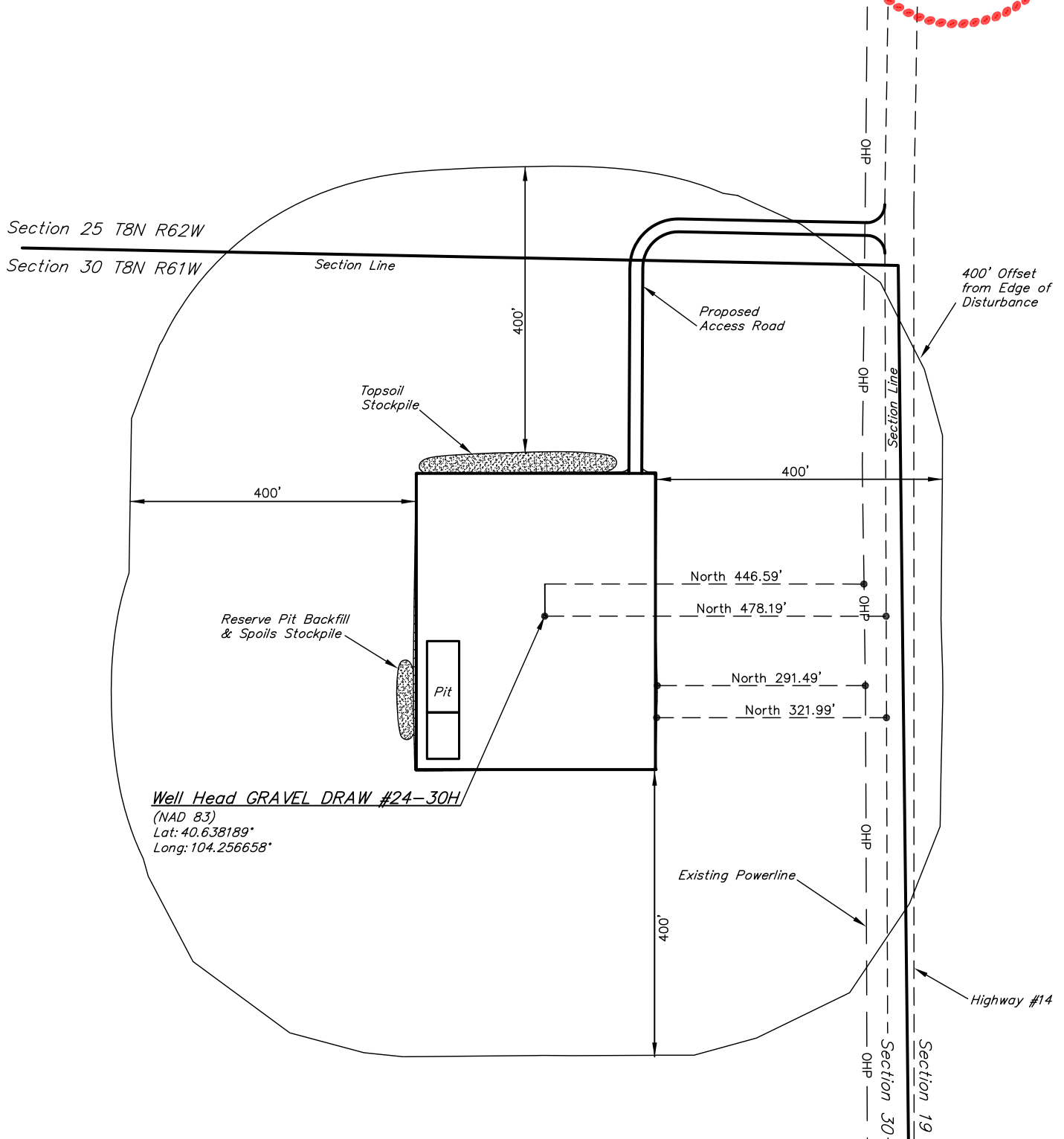
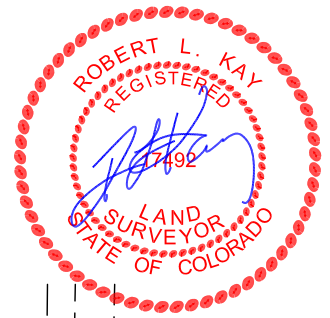
EOG RESOURCES, INC.

ADDENDUM TO LEGAL PLAT FOR

GRAVEL DRAW #24-30H
SECTION 30, T8N, R61W, 6th P.M.
501' FNL 501' FWL



SCALE: 1" = 200'
DATE: 12-10-10
DRAWN BY: M.D.



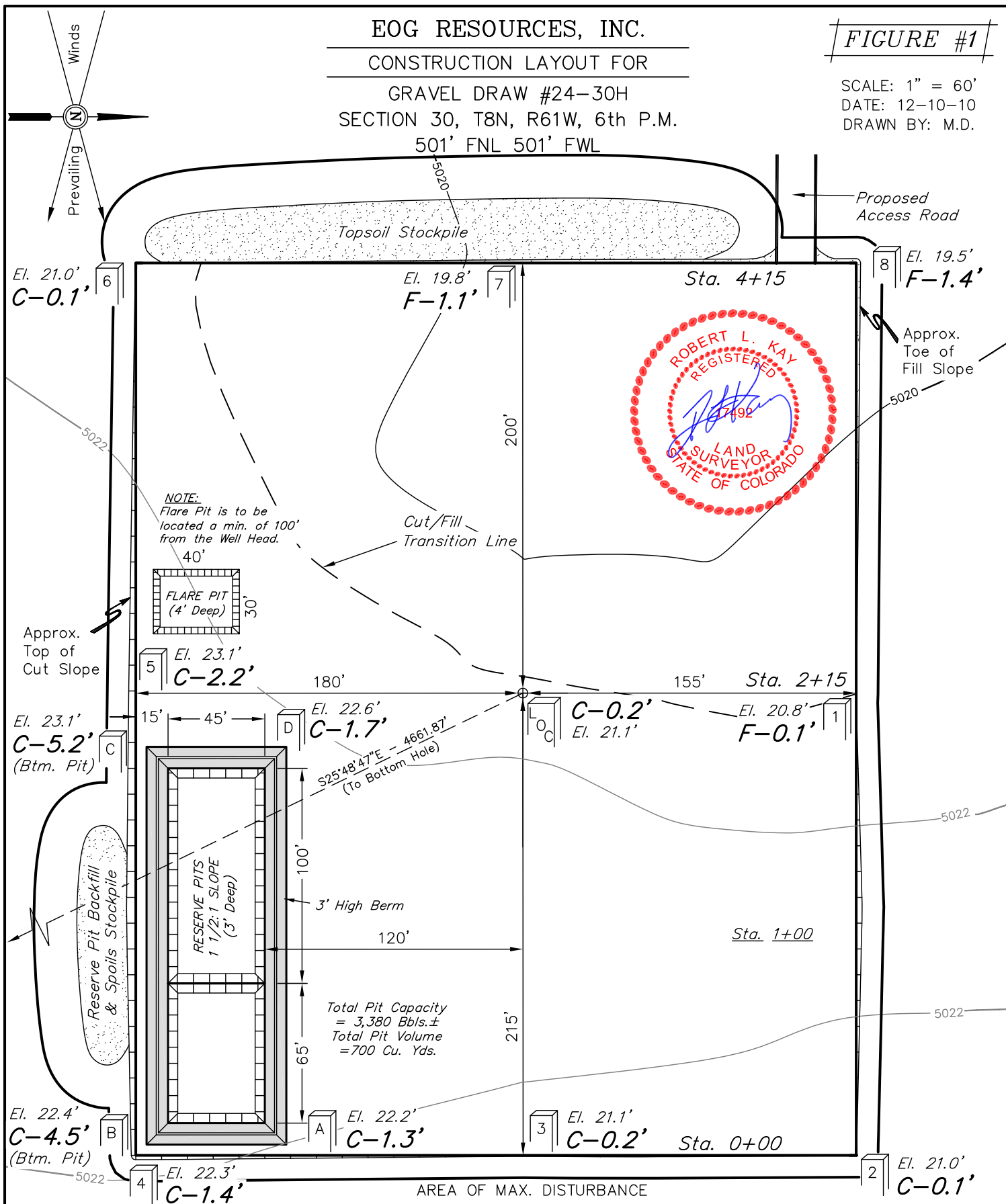
EOG RESOURCES, INC.

CONSTRUCTION LAYOUT FOR

GRAVEL DRAW #24-30H
SECTION 30, T8N, R61W, 6th P.M.
501' FNL 501' FWL

FIGURE #1

SCALE: 1" = 60'
DATE: 12-10-10
DRAWN BY: M.D.



Elev. Ungraded Ground At Loc. Stake = 5021.1'
FINISHED GRADE ELEV. AT LOC. STAKE = 5020.9'

UINTAH ENGINEERING & LAND SURVEYING
85 So. 200 East * Vernal, Utah 84078 * (435) 789-1017

EOG RESOURCES, INC.

FIGURE #2

CONSTRUCTION LAYOUT CROSS SECTION FOR

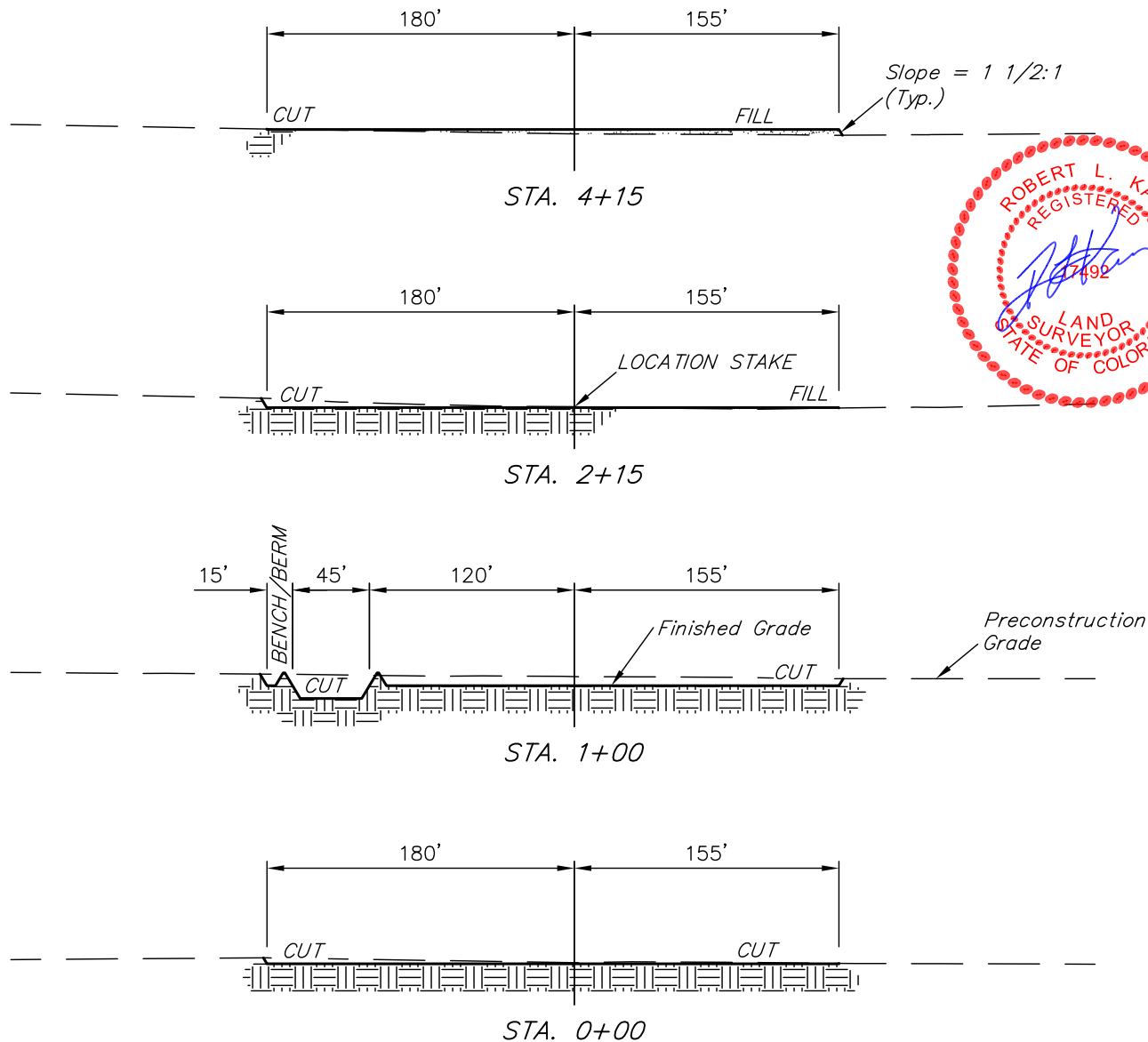
GRAVEL DRAW #24-30H

SECTION 30, T8N, R61W, 6th P.M.

501' FNL 501' FWL

X-Section
Scale
1" = 40'
1" = 100'

DATE: 12-10-10
DRAWN BY: M.D.



NOTE:

Topsoil should not be Stripped Below Finished Grade on Substructure Area.

APPROXIMATE ACREAGES
WELL SITE DISTURBANCE = ± 3.953 ACRES
ACCESS ROAD DISTURBANCE = ± 0.478 ACRES
TOTAL = ± 4.431 ACRES

* NOTE:
FILL QUANTITY INCLUDES 5% FOR COMPACTION

APPROXIMATE YARDAGES

(6") Topsoil Stripping = 2,650 Cu. Yds.
Remaining Location = 3,360 Cu. Yds.
TOTAL CUT = 6,010 CU.YDS.
FILL = 3,010 CU.YDS.

EXCESS MATERIAL = 3,000 Cu. Yds.
Topsoil & Pit Backfill = 3,000 Cu. Yds.
(1/2 Pit Vol.)
EXCESS UNBALANCE = 0 Cu. Yds.
(After Interim Rehabilitation)

UINTAH ENGINEERING & LAND SURVEYING
85 So. 200 East * Vernal, Utah 84078 * (435) 789-1017

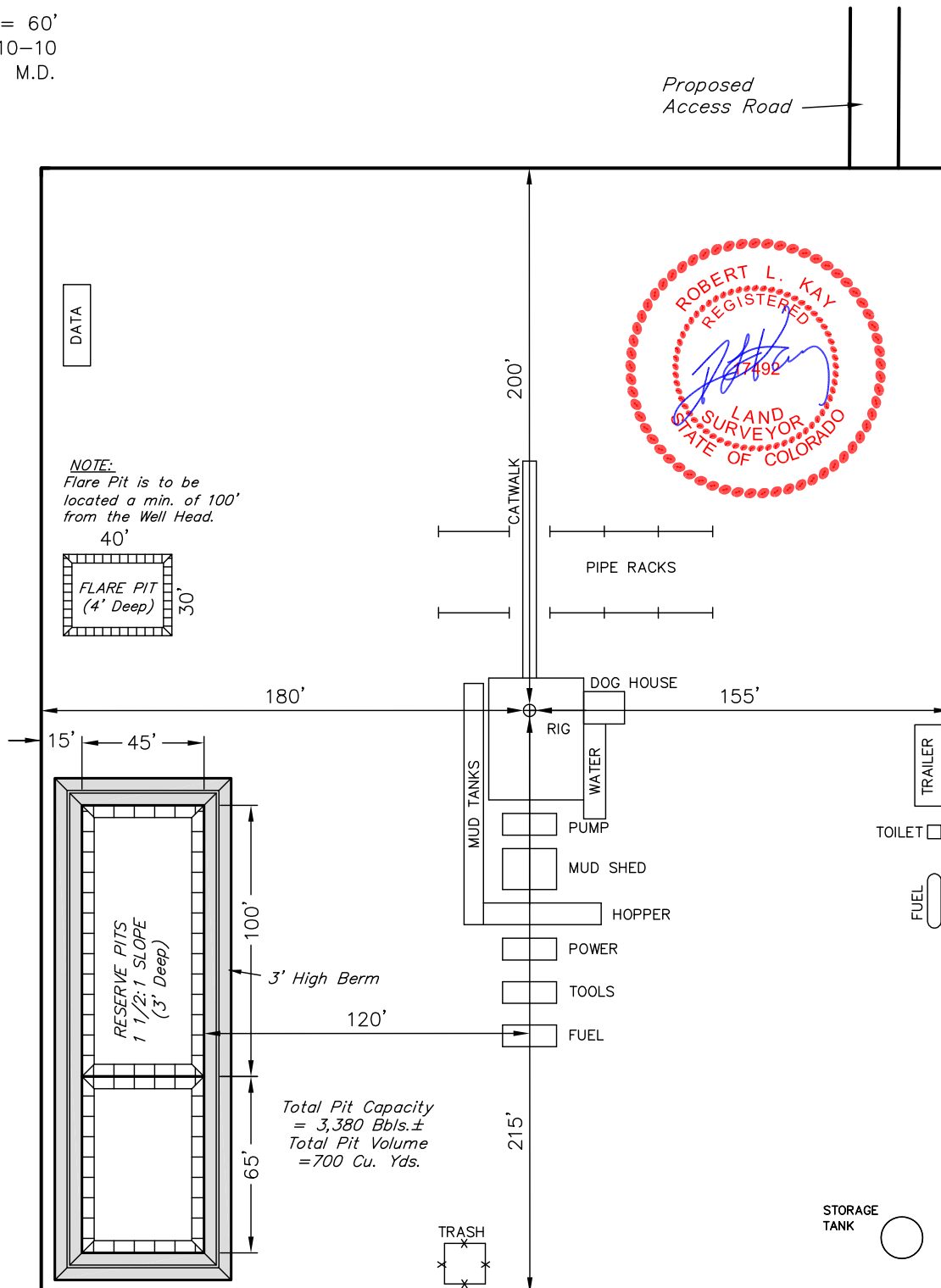
EOG RESOURCES, INC.

FIGURE #3

TYPICAL RIG LAYOUT FOR

GRAVEL DRAW #24-30H
SECTION 30, T8N, R61W, 6th P.M.
501' FNL 501' FWL

SCALE: 1" = 60'
DATE: 12-10-10
DRAWN BY: M.D.



EOG RESOURCES, INC.

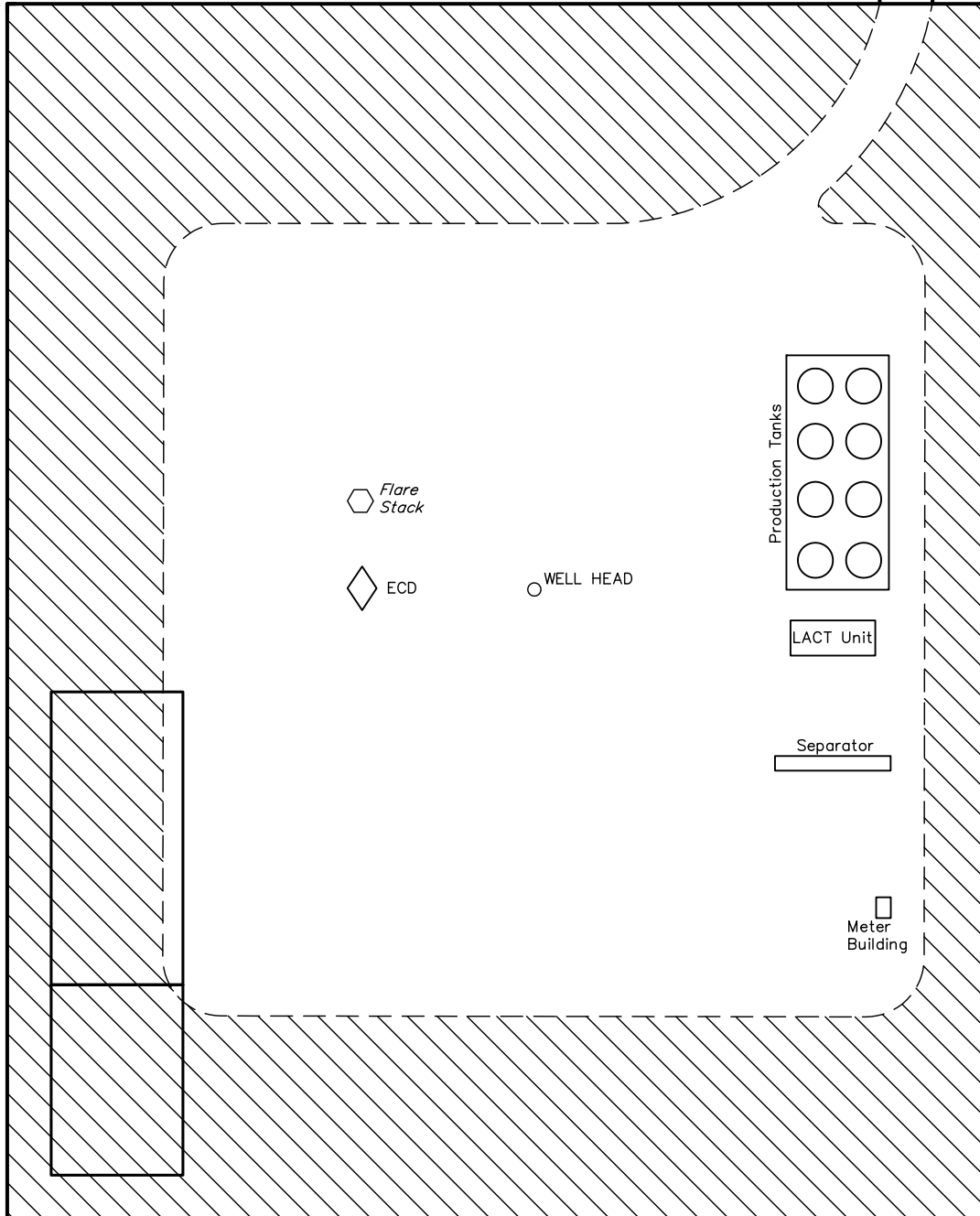
RECLAMATION DIAGRAM FOR

GRAVEL DRAW #24-30H
SECTION 30, T8N, R61W, 6th P.M.
501' FNL 501' FWL

FIGURE #4



SCALE: 1" = 60'
DATE: 12-10-10
DRAWN BY: M.D.



APPROXIMATE ACREAGES
UN-RECLAIMED = ± 1.687 ACRES



RECLAIMED AREA

UINTAH ENGINEERING & LAND SURVEYING
85 So. 200 East * Vernal, Utah 84078 * (435) 789-1017

EOG RESOURCES, INC.

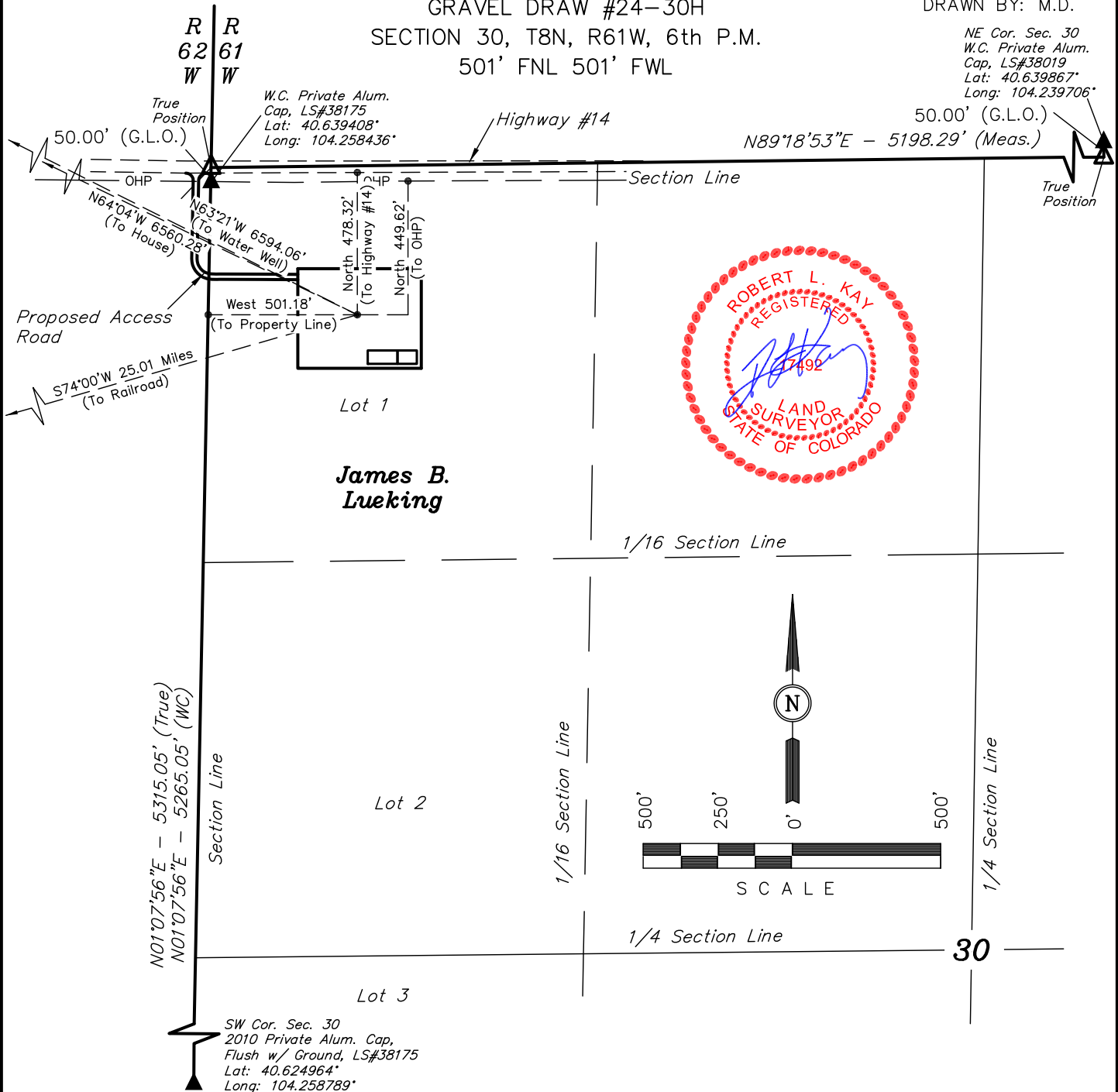
LOCATION DRAWING FOR

GRAVEL DRAW #24-30H
SECTION 30, T8N, R61W, 6th P.M.
501' FNL 501' FWL

FIGURE #5

DATE: 12-10-10
DRAWN BY: M.D.

NE Cor. Sec. 30
W.C. Private Alum.
Cap, LS#38019
Lat: 40.639867°
Long: 104.239706°



PLANT COMMUNITY

- ☐ DISTURBED GRASSLAND
- ☐ NATIVE GRASSLAND
- ☐ SHRUB LAND
- ☐ PLAINS RIPARIAN
- ☐ MOUNTAIN RIPARIAN
- ☐ FOREST LAND
- ☐ WETLANDS AQUATIC
- ☐ ALPINE
- ☐ OTHER (Describe): _____

CURRENT LAND USE

- CROP LAND: ☐ IRRIGATED ☐ DRY LAND ☐ IMPROVED PASTURE ☐ HAY MEADOW ☐ CRP
- NON-CROP LAND: ☐ RANGELAND ☐ TIMBER ☐ RECREATIONAL ☐ OTHER (Describe) _____
- SUBDIVIDED: ☐ INDUSTRIAL ☐ COMMERCIAL ☐ RESIDENTIAL _____

FUTURE LAND USE

- CROP LAND: ☐ IRRIGATED ☐ DRY LAND ☐ IMPROVED PASTURE ☐ HAY MEADOW ☐ CRP
- NON-CROP LAND: ☐ RANGELAND ☐ TIMBER ☐ RECREATIONAL ☐ OTHER (Describe) _____
- SUBDIVIDED: ☐ INDUSTRIAL ☐ COMMERCIAL ☐ RESIDENTIAL _____