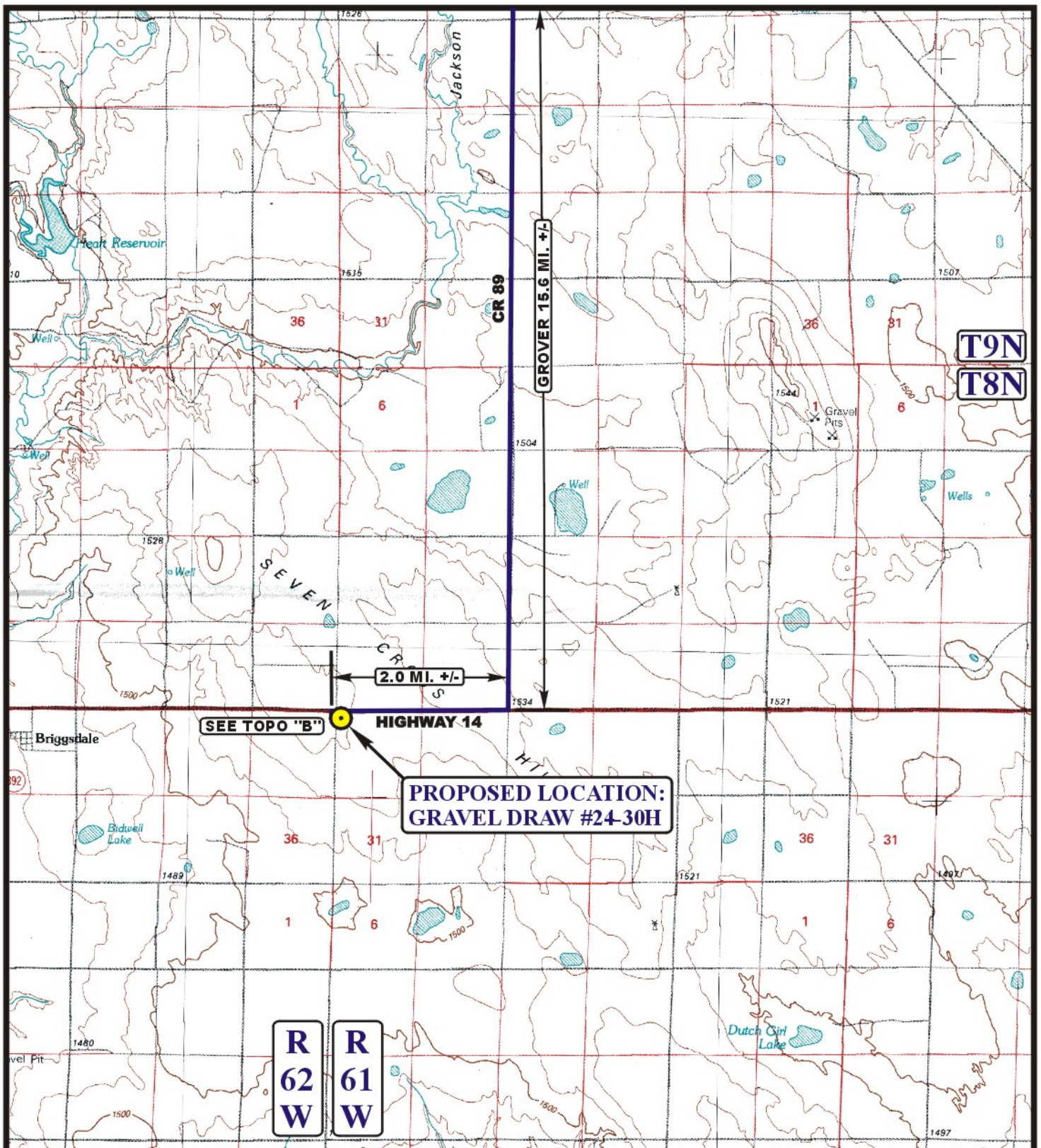


EOG RESOURCES, INC.
GRAVEL DRAW #24-30H
SECTION 30, T8N, R61W, 6th P.M.

PROCEED IN A SOUTHEASTERLY DIRECTION FROM GROVER, COLORADO ALONG COUNTY ROAD 390 APPROXIMATELY 0.2 MILES TO THE JUNCTION OF THIS ROAD AND COUNTY ROAD 89 TO THE SOUTH; TURN RIGHT AND PROCEED IN A SOUTHERLY DIRECTION APPROXIMATELY 15.4 MILES TO THE JUNCTION OF THIS ROAD AND HIGHWAY 14 TO THE WEST; TURN RIGHT AND PROCEED IN A WESTERLY DIRECTION APPROXIMATELY 2.0 MILES TO THE BEGINNING OF THE PROPOSED ACCESS ROAD TO THE SOUTH; FOLLOW ROAD FLAGS IN A SOUTHERLY, THEN EASTERLY DIRECTION APPROXIMATELY 694' TO THE PROPOSED LOCATION.

TOTAL DISTANCE FROM GROVER, COLORADO TO THE PROPOSED LOCATION IS APPROXIMATELY 17.7 MILES.



LEGEND:

PROPOSED LOCATION

EOG RESOURCES, INC.

GRAVEL DRAW #24-30H
 SECTION 30, T8N, R61W, 6th P.M.
 501' FNL 501' FWL



Uintah Engineering & Land Surveying
 85 South 200 East Vernal, Utah 84078
 (435) 789-1017 * FAX (435) 789-1813

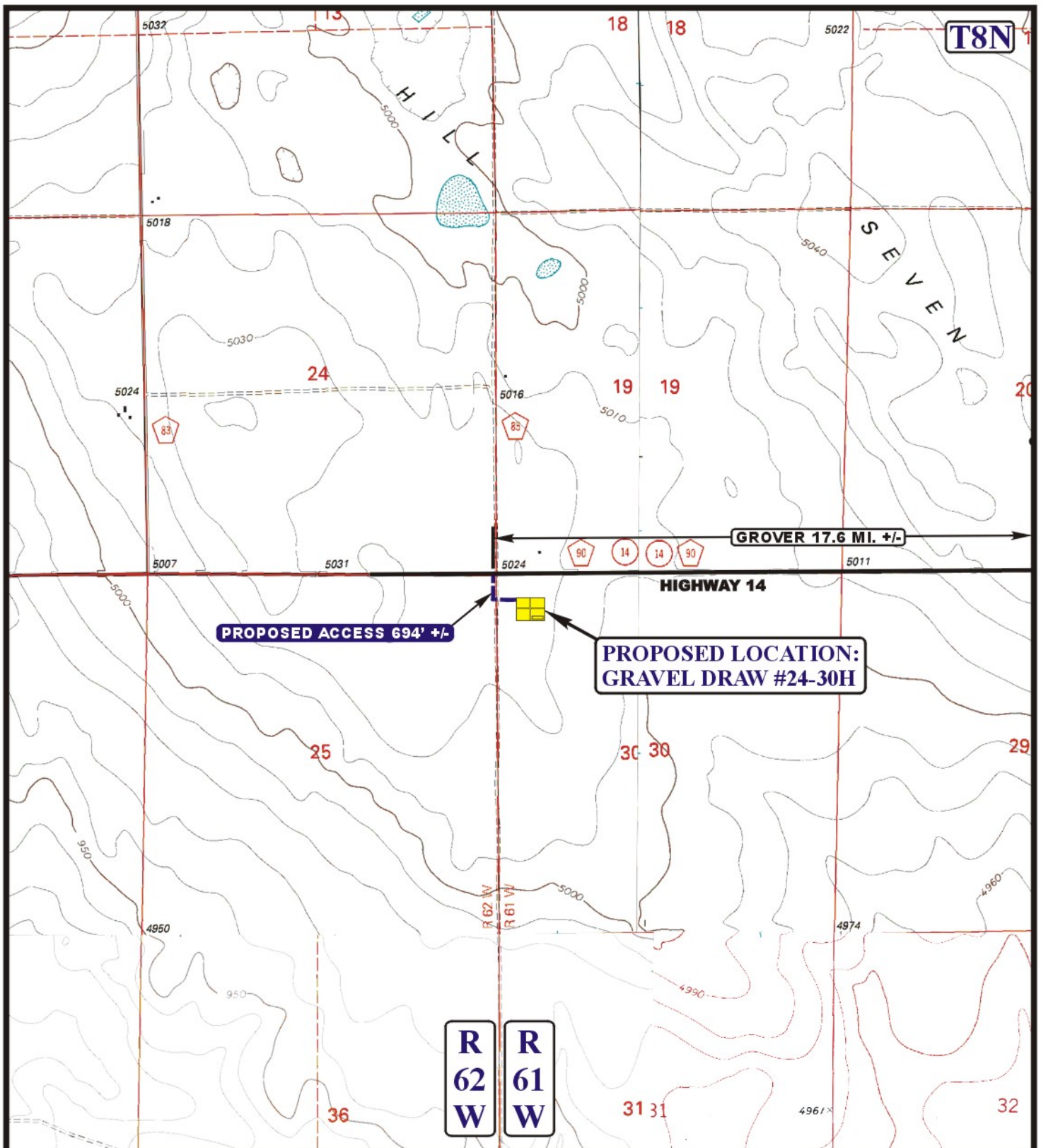


ACCESS ROAD
 MAP

12 20 10
 MONTH DAY YEAR

SCALE: 1:100,000 DRAWN BY: S.L. REVISED: 00-00-00





LEGEND:

- EXISTING ROAD
- PROPOSED ACCESS ROAD
- EXISTING FENCE
- INSTALL CATTLE GUARD



Utah Engineering & Land Surveying
85 South 200 East Vernal, Utah 84078
(435) 789-1017 * FAX (435) 789-1813



EOG RESOURCES, INC.

GRAVEL DRAW #24-30H
SECTION 30, T8N, R61W, 6th P.M.
501' FNL 501' FWL

ACCESS ROAD
MAP

12 20 10
MONTH DAY YEAR

B
TOPO

SCALE: 1" = 2000' DRAWN BY: S.L. REVISED: 00-00-00