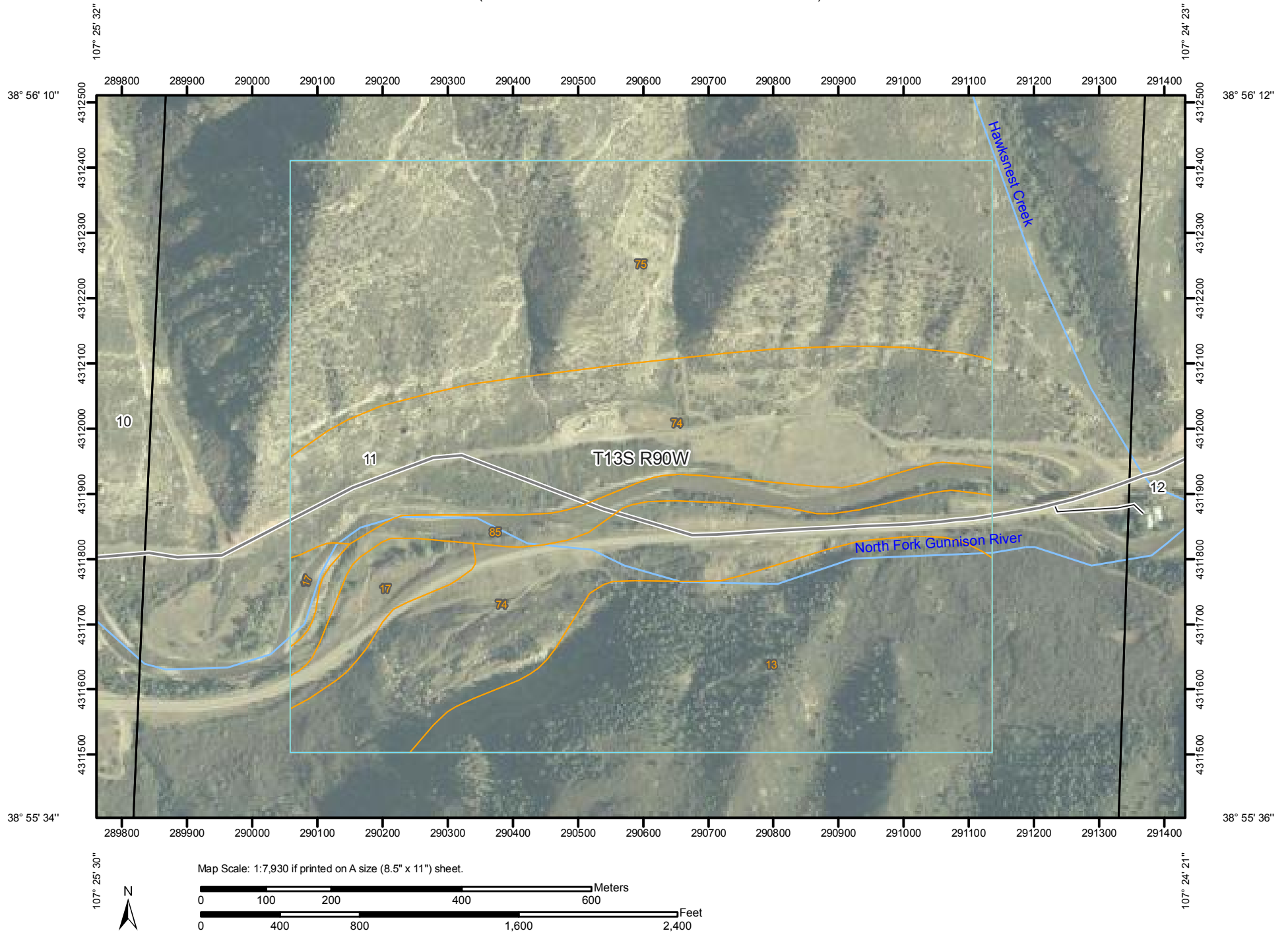


Soil Map—Paonia Area, Colorado, Parts of Delta, Gunnison, and Montrose Counties
(VESSALS COAL GAS INC.-OXBOW MINING LLC #1)



Soil Map—Paonia Area, Colorado, Parts of Delta, Gunnison, and Montrose Counties
(VESSALS COAL GAS INC.-OXBOW MINING LLC #1)

MAP LEGEND

Area of Interest (AOI)

 Area of Interest (AOI)

Soils

 Soil Map Units

Special Point Features

-  Blowout
-  Borrow Pit
-  Clay Spot
-  Closed Depression
-  Gravel Pit
-  Gravelly Spot
-  Landfill
-  Lava Flow
-  Marsh or swamp
-  Mine or Quarry
-  Miscellaneous Water
-  Perennial Water
-  Rock Outcrop
-  Saline Spot
-  Sandy Spot
-  Severely Eroded Spot
-  Sinkhole
-  Slide or Slip
-  Sodic Spot
-  Spoil Area
-  Stony Spot



Very Stony Spot



Wet Spot



Other

Special Line Features



Gully



Short Steep Slope



Other

Political Features



Cities



PLSS Township and Range



PLSS Section

Water Features



Oceans



Streams and Canals

Transportation



Rails



Interstate Highways



US Routes



Major Roads



Local Roads

MAP INFORMATION

Map Scale: 1:7,930 if printed on A size (8.5" × 11") sheet.

The soil surveys that comprise your AOI were mapped at 1:24,000.

Please rely on the bar scale on each map sheet for accurate map measurements.

Source of Map: Natural Resources Conservation Service
Web Soil Survey URL: <http://websoilsurvey.nrcs.usda.gov>
Coordinate System: UTM Zone 13N NAD83

This product is generated from the USDA-NRCS certified data as of the version date(s) listed below.

Soil Survey Area: Paonia Area, Colorado, Parts of Delta, Gunnison, and Montrose Counties
Survey Area Data: Version 5, Jan 31, 2008

Date(s) aerial images were photographed: 8/28/2005

The orthophoto or other base map on which the soil lines were compiled and digitized probably differs from the background imagery displayed on these maps. As a result, some minor shifting of map unit boundaries may be evident.



Map Unit Legend

Paonia Area, Colorado, Parts of Delta, Gunnison, and Montrose Counties (CO679)			
Map Unit Symbol	Map Unit Name	Acres in AOI	Percent of AOI
13	Beenom-Absarokee association, 20 to 60 percent slopes	52.1	21.5%
17	Breece loam, 1 to 6 percent slopes	8.2	3.4%
74	Torriorthents-Haplargids complex, very stony	83.8	34.7%
75	Torriorthents-Rock outcrop, sandstone, complex	86.5	35.8%
85	Water	11.1	4.6%
Totals for Area of Interest		241.7	100.0%