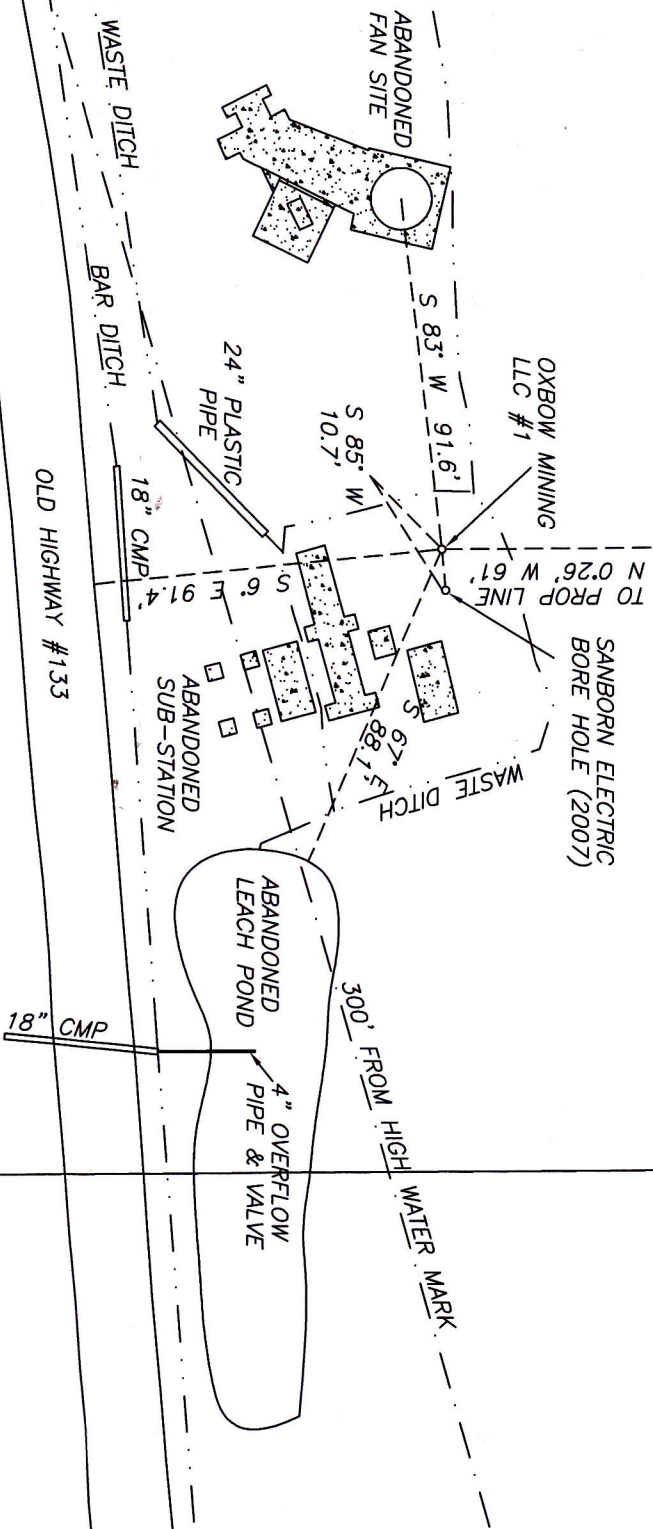


VESSELS COAL GAS, INC.-OXBOW MINING LLC #1

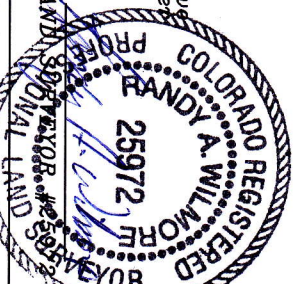
NE1/4 SW1/4, SEC. 11, T. 13 S., R. 90 W., 6TH P.M., GUNNISON COUNTY, COLORADO



- LEGEND**
- o PP Power Pole
 - E— Electric (overhead)
 - Edge river
 - Ditch
 - [Pattern] Concrete

SURVEYOR'S CERTIFICATION
 I, Randy A. Wilmore, do hereby certify that the above described parcel has been surveyed by me and under my direct supervision and that such survey is accurately represented hereon.

Date: 24 March 2011 Signed: Randy A. Wilmore
 COLORADO PROFESSIONAL LAND SURVEYOR #25972



**VESSELS COAL GAS, INC.
 OXBOW MINING LLC #1**
 NE1/4 SW1/4 SEC. 11, T. 13 S., R. 90 W., 6TH P.M.,
 GUNNISON COUNTY, COLORADO

W&C Wilmore and Company
Professional Land Surveying Inc.
 4053 German Creek Drive, Pueblo, Colorado 81428
 Phone: (970) 527-4200 Fax: (970) 527-4202

FIELD CREW:	KC
DRAWN:	KC
CHECKED BY:	RAW
SURVEYED:	AUG. 4, 2010

SCALE 1"=50'
 0 25 50