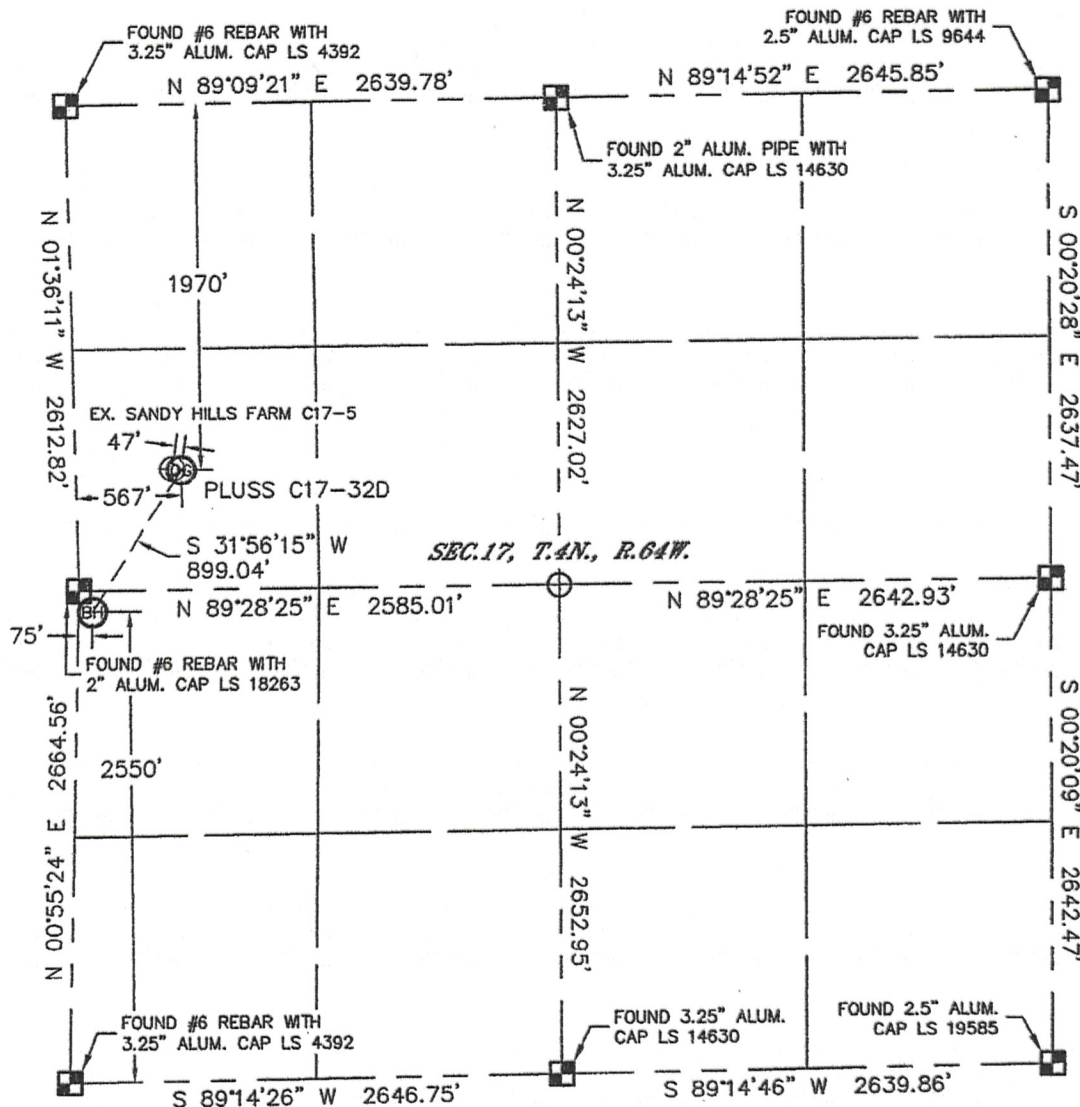


WELL LOCATION CERTIFICATE

THIS MAP DOES NOT REPRESENT A BOUNDARY SURVEY

SECTION: 17
TOWNSHIP: 4N
RANGE: 64W



In accordance with a request from CJ Pietri with Noble Energy Inc., Lat40°, Inc. has determined the surface location of the PLUSS C17-32D to be 1970' from the NORTH line and 567' from the WEST line and the bottom hole to be 2550' from the SOUTH line and 75' from the WEST line as measured at right angles from the section lines of Section 17, Township 4 North, Range 64 West of the Sixth Principal Meridian, County of Weld, State of Colorado.

I hereby state that this Well Location Certificate was prepared by me, or under my direct supervision, that the fieldwork was completed on 1/25/11, for and on behalf of Noble Energy Inc.. That this is not a Land Survey Plat or an Improvement Survey Plat, and that it is not to be relied upon for establishment of fence, building, or other future improvement lines.

SURFACE LOCATION
LATITUDE: 40.31422N
LONGITUDE: 104.58185W
PDOP: 1.4
ELEV: 4748'
1/4, 1/4: SW1/4NW1/4
NEAREST PROPERTY LINE: 567' WEST

BOTTOM HOLE
LATITUDE: 40.31214N
LONGITUDE: 104.58358W

NOTE:

- 1) Bearings shown are Grid Bearings of the Colorado State Plane Coordinate System, North Zone, North American Datum 1983/2007. The lined dimensions as contained herein are based upon the "U.S. Survey Foot."
- 2) Ground elevations are based on an observed GPS elevation (NAVD 1988 DATUM).
- 3) NEAREST EXISTING WELL: SANDY HILLS FARM C17-5, 47'
- 4) IMPROVEMENTS: See LOCATION DRAWING for all visible improvements within 400' of disturbed area.
- 5) SURFACE USE: RANGELAND
- 6) INSTRUMENT OPERATOR: ADAM KELLY

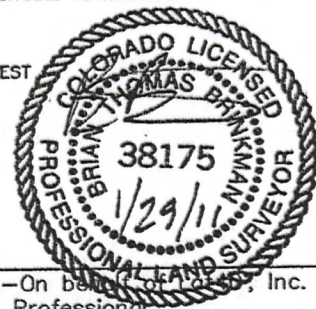
NOTE

According to Colorado law, you must commence any legal action based upon any defect in this W.L.C. within three years after you discover such defect. In no event, may any action based upon any defect in this survey be commenced more than ten years after the date of the certificate shown hereon. (13-80-105 C.R.S.)

LEGEND

- = ALIQUOT MONUMENT AS DESCRIBED
- = CALCULATED POSITION

Brian T. Brinkman—On behalf of Lat40°, Inc.
Colorado Licensed Professional
Land Surveyor No. 38175 PROJECT#: 2011016



Lat40°, Inc.

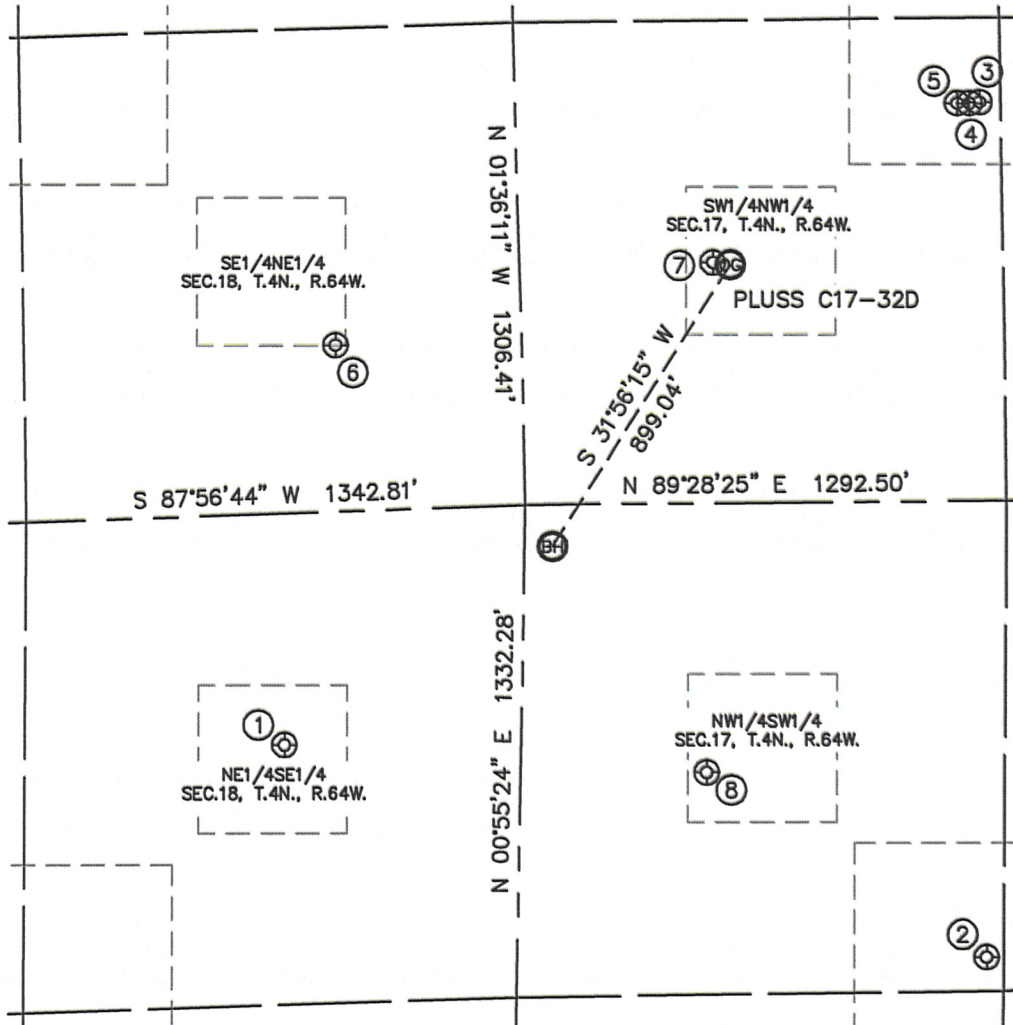
1635 Foxtrail Drive, Suite 325

Loveland, CO 80538

SITE SKETCH

PLUSS C17-32D

SECTION: 17
TOWNSHIP: 4N
RANGE: 64W



①
SCHNEIDER 43-18
NE1/4SE1/4
2030' FSL
637' FWL
LAT-40.31069°N
LONG-104.58619°W
PDOP: 3.0
ELEV: 4773'

②
ANGELA C17-25
NW1/4SW1/4
1422' FSL
1261' FWL
LAT-40.30906°N
LONG-104.57944°W
PDOP: 3.2
ELEV: 4738'

③
SH FARMS C17-19
SW1/4NW1/4
1539' FSL
1248' FWL
LAT-40.31541°N
LONG-104.57944°W
PDOP: 2.3
ELEV: 4745'

④
SH FARMS C17-3
SW1/4NW1/4
1542' FSL
1220' FWL
LAT-40.31541°N
LONG-104.57953°W
PDOP: 3.2
ELEV: 4745'

⑤
SH FARMS C17-6
SW1/4NW1/4
1541' FSL
1188' FWL
LAT-40.31541°N
LONG-104.57965°W
PDOP: 3.2
ELEV: 4746'

⑥
FRICK C18-8
SE1/4NE1/4
2168' FSL
500' FWL
LAT-40.31365°N
LONG-104.58566°W
PDOP: 2.2
ELEV: 4757

⑦
SANDY HILL FARMS C17-5
SW1/4NW1/4
1963' FSL
520' FWL
LAT-40.31424°N
LONG-104.58202°W
PDOP: 1.6
ELEV: 4748

⑧
UPRR OCOMA C17-12
NW1/4SW1/4
1933' FSL
500' FWL
LAT-40.31045°N
LONG-104.58212°W
PDOP: 2.3
ELEV: 4747

