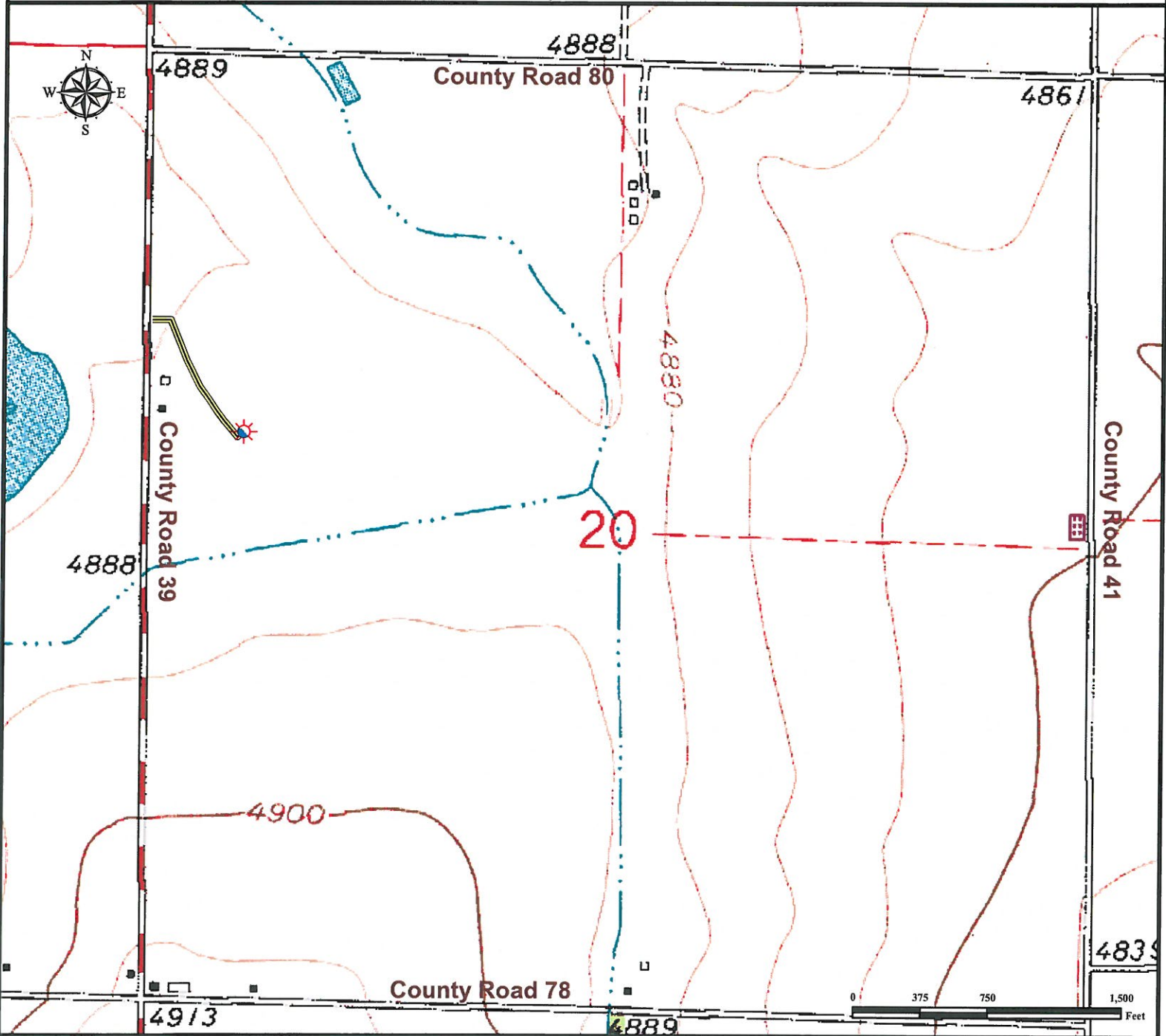


Access Road Map CALVARY 20-12

SW¼ NW¼ SECTION 20, TOWNSHIP 7 NORTH, RANGE 65 WEST OF THE 6TH PRINCIPAL MERIDIAN



Legend



Proposed Well



Access Road

Reference Location

**Reference Well

CALVARY 20-12 **

Lat: 40.561922° Long: -104.694692°
(NAD 83)

Elevation: 4888 Feet



Use our resources to find yours!
www.petro-fs.com
(303) 928-7128

Field Date: 03/16/2011
Drafting Date: 03/26/2011
Drafter: DMM
Checked By: BHF

Data Sources:
- Topo courtesy USGS

Prepared for: ORR ENERGY LLC

