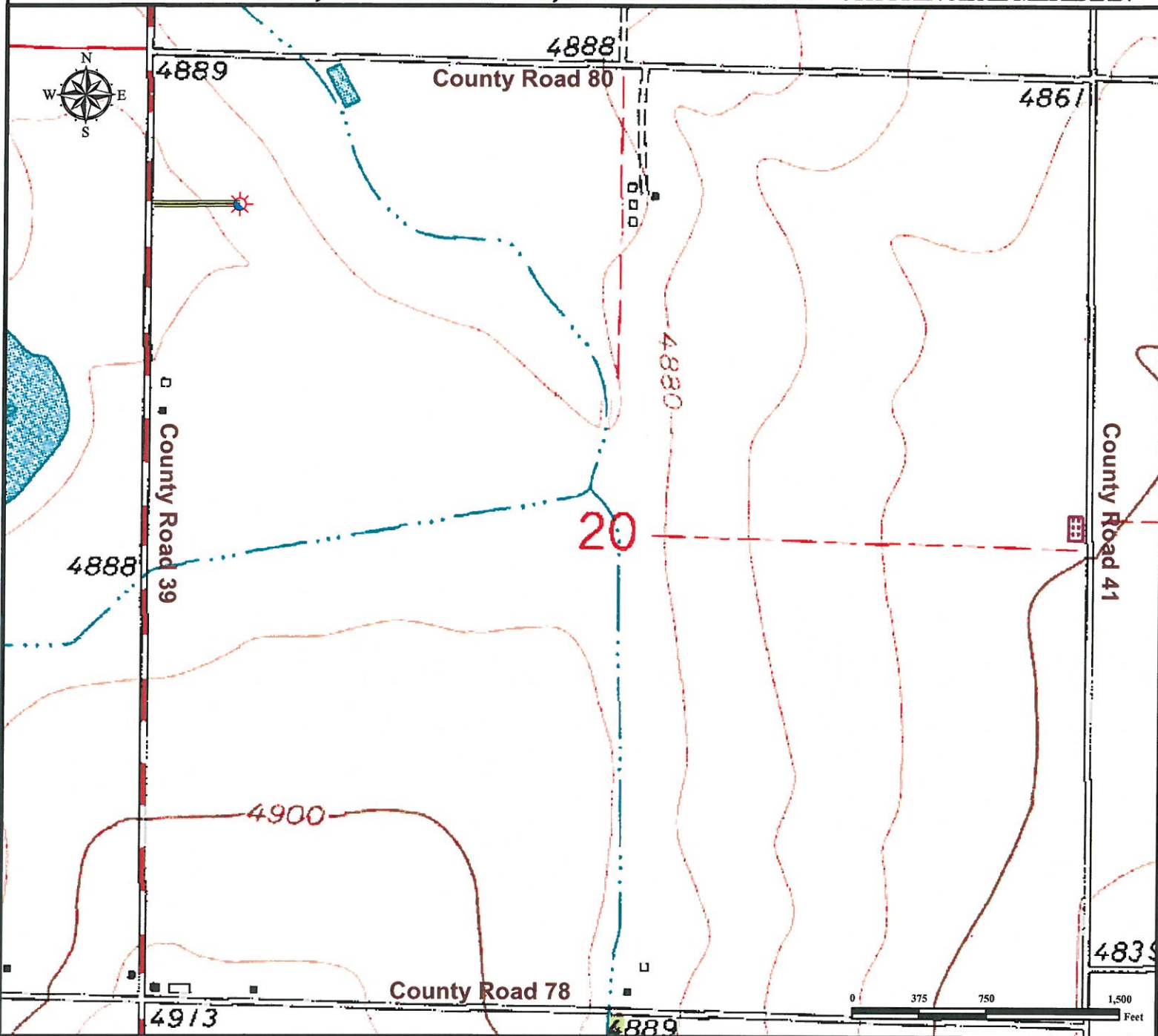


# Access Road Map CALVARY 20-11

NW¼ NW¼ SECTION 20, TOWNSHIP 7 NORTH, RANGE 65 WEST OF THE 6TH PRINCIPAL MERIDIAN



## Legend



Proposed Well



Access Road

## Reference Location

\*\*Reference Well

CALVARY 20-11 \*\*

Lat: 40.565443° Long: -104.694792°  
(NAD 83)

Elevation: 4884 Feet



Use our resources to find yours!

[www.petro-fs.com](http://www.petro-fs.com)

(303) 928-7128

Field Date: 03/16/2011

Drafting Date: 03/26/2011

Drafter: DMM

Checked By: BHF

Data Sources:

- Topo courtesy USGS

Prepared for: ORR ENERGY LLC

