



Copyright © 2003 by Epoch Well Services, Inc.

Houston, TX
(281) 784-5500
Bakersfield, CA
(661) 328-1595
New Iberia, LA
(337) 364-2322
Anchorage, AK
(907) 561-2465

MUDLOG TVD

COMPANY	ExxonMobil Production
WELL	FRU 197-28A5
FIELD	PICEANCE CREEK
REGION	ROCKIES
COORDINATES	LAT: 39.9344449000 LON: 108.295900000
ELEVATION	GL = 6,082' KB = 6,109'
COUNTY, STATE	RIO BLANCO, CO
API INDEX	051031163300
SPUD DATE	08/05/2010
CONTRACTOR	HELMRICH AND PAYNE
CO. REP.	RICKY T. OWENS
RIG/TYPE	215 / FLEX 3
LOGGING UNIT	UNIT 051
GEOLOGISTS	GEORGE BAKER DEVIN CLAAR
ADD. PERSONS	BILL JOHANNING TRISH ORTIZ
CO. GEOLOGIST	MEL,ANIE BIGGS

LOG INTERVAL

DEPTHS: 149' TO 12,529'
DATES: 8/05/2010 TO 8/25/2010
SCALE: 5" =100'

CASING DATA

16" AT 120'
10.75" AT 3,566'
AT
AT

MUD TYPES

SPUD MUD TO 3,576'
BARO-TROL PLUS TO 12,529'
TO
TO

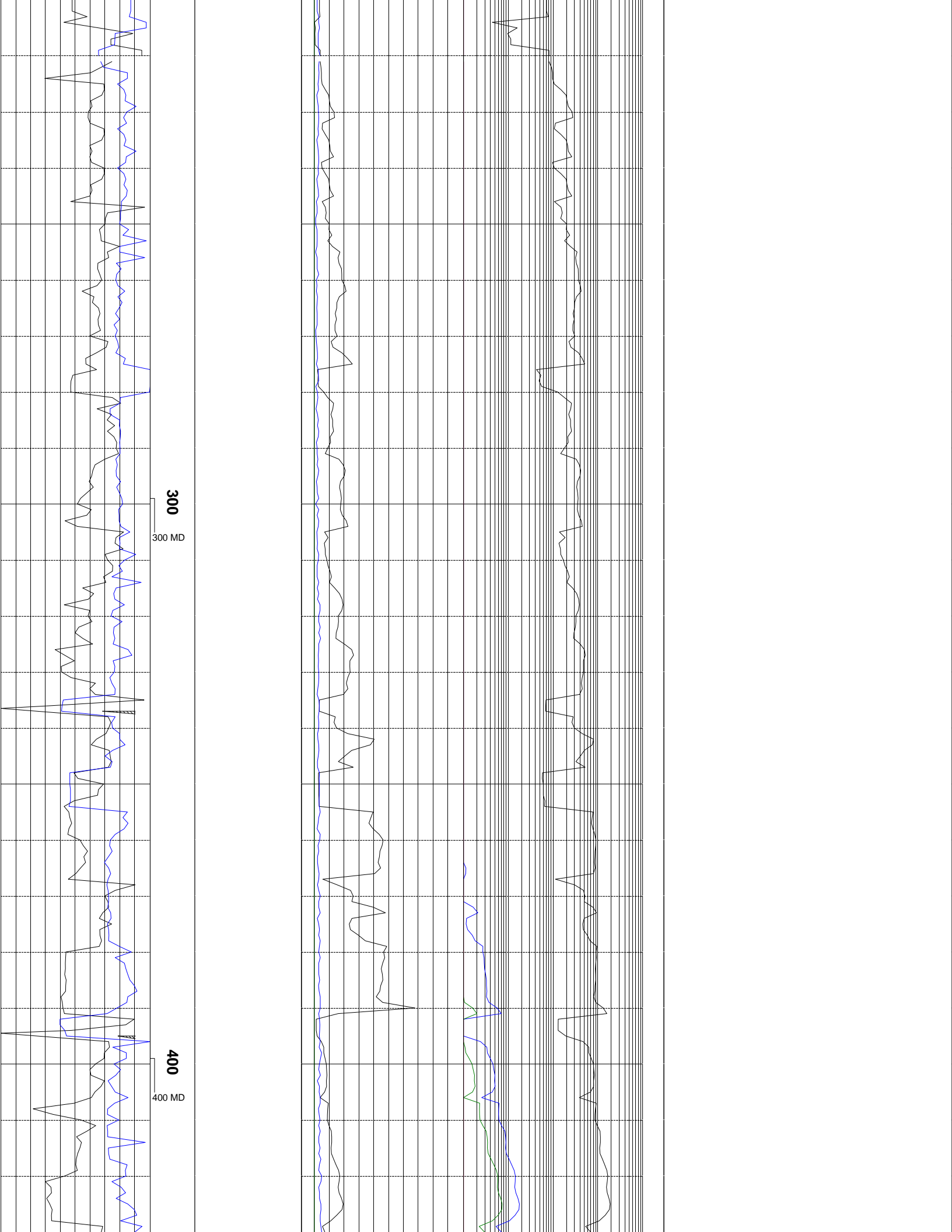
HOLE SIZE

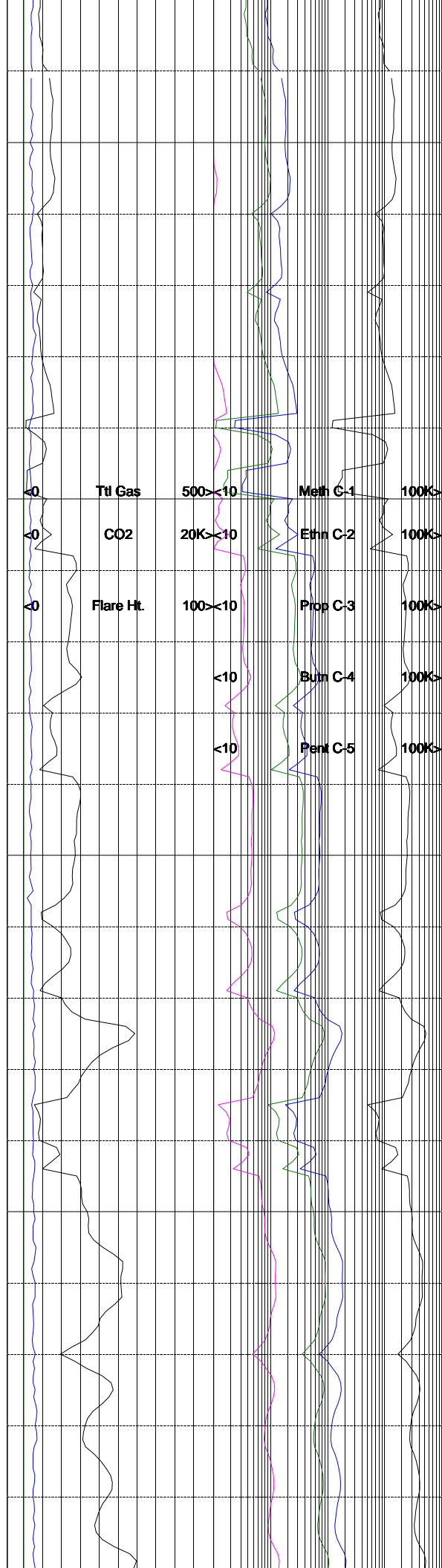
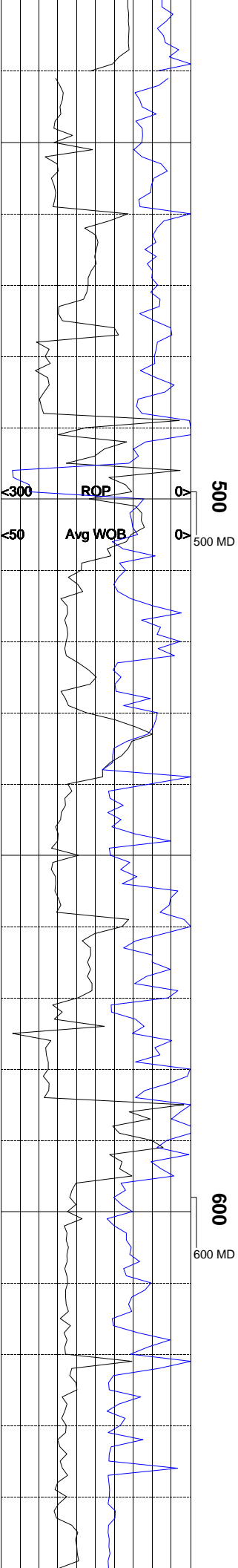
14.75" TO 3,576'
8.75" TO 12,529'
TO
TO

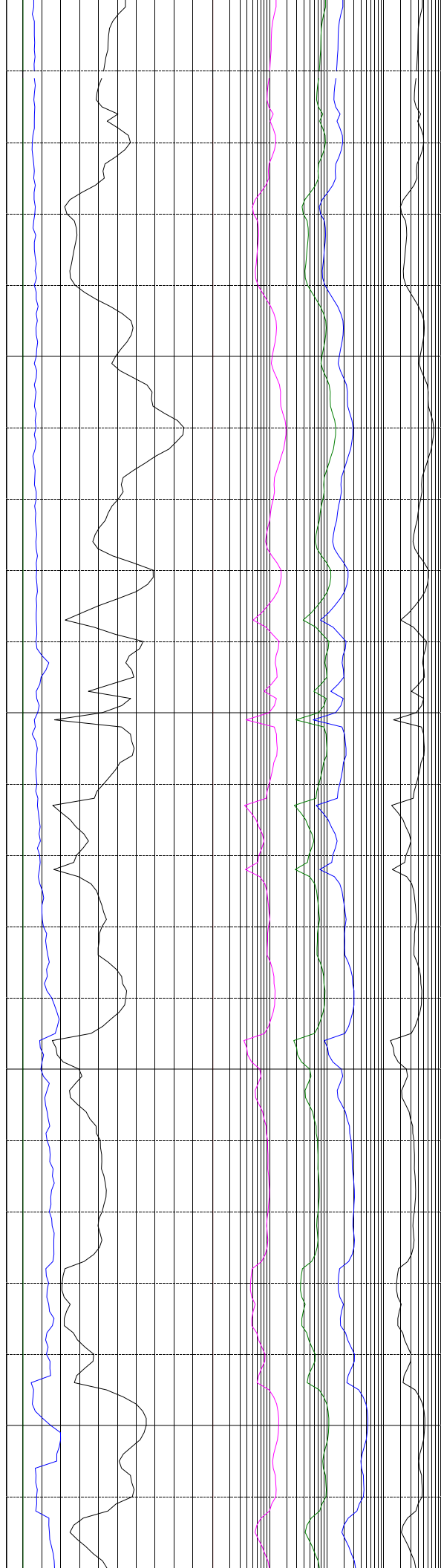
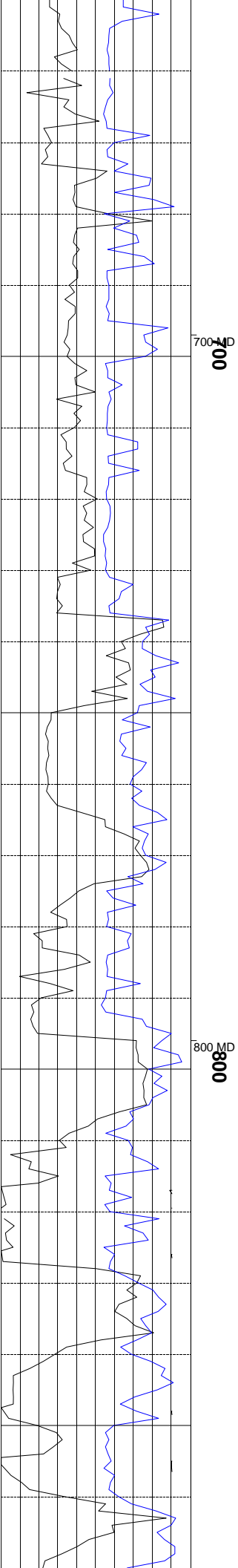
ABBREVIATIONS

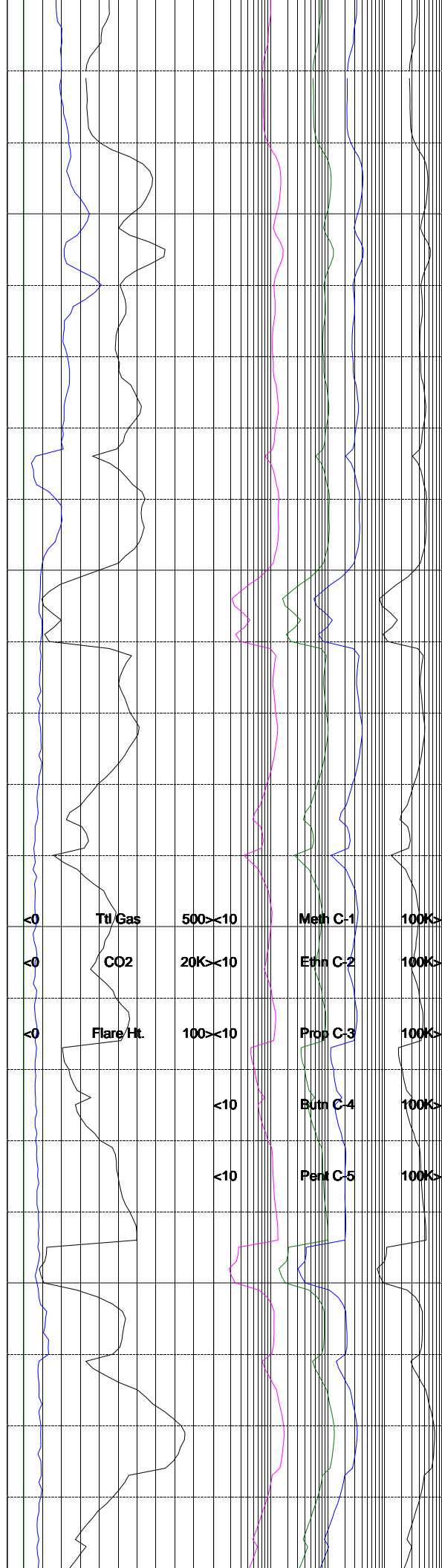
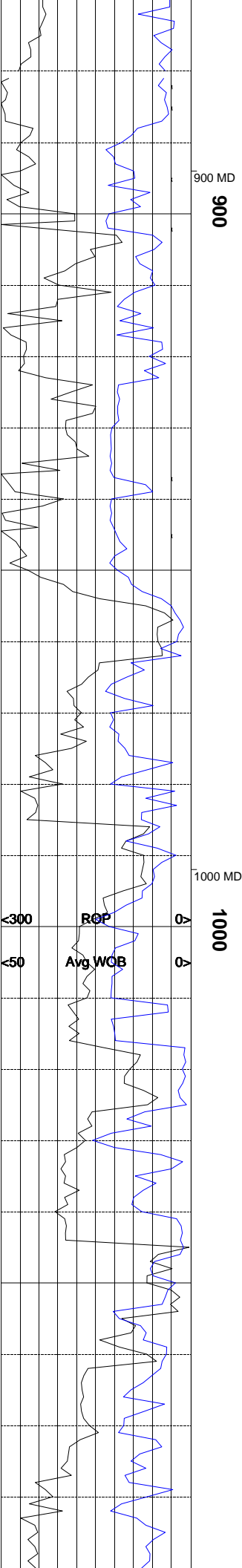
NB	NEWBIT	PV	PLASTIC VISCOSITY	LC	LOST CIRCULATION
RRB	RERUN BIT	YP	YIELD POINT	CO	CIRCULATE OUT
CB	CORE BIT	FL	FLUID LOSS	NR	NO RETURNS
WOB	WEIGHT ON BIT	CL	PPM CLORIDE ION	TG	TRIP GAS
RPM	ROTARY REV/MIN	Rm	MUD RESISTIVITY	SG	SURVEY GAS
PP	PUMP PRESSURE	Rmf	FILTRATE RESISTIVITY	WG	WIPER GAS
SPM	STROKES/MIN	PR	POOR RETURNS	CG	CONNECTION GAS
MW	MUD WEIGHT	LAT	LOGGED AFTER TRIP		
VIS	FUNNEL VISCOSITY	LAS	LOGGED AFTER SURVEY		

ALTERED ZONE	CHERT - GLASSY	FELSIC SILIC DIKE	MARL - CALC	SANDSTONE
ANDESITE	CHERT - PORCEL	FOSSIL	METAMORPHICS	SANDSTONE-TUFFACEOUS
ANHYDRITE	CHERT - TIGER STRIPE	GABBRO	MUDSTONE	SERICITIZATION
BASALT	CHERT - UNDIFF	GLASSY TUFF	OBSIDIAN	SERPENTINE
BENTONITE	CLAY	GRANITE	PALEOSOL	SHALE
BIOTITIZATION	CLAY-MUDSTONE	GRANITE WASH	PHOSPHATE	SHALE TUFFACEOUS
BRECCIA	CLYST-TUFFACEOUS	GRANODIORITE	PORCELANITE	SHELL FRAGMENTS
CALCARENITE	CHLORITIZATION	GYPSUM	PORCELANEOUS CLYST	SIDERITE
CALCAREOUS TUFF	COAL	HALITE	PYRITE	SILICIFICATION
CALCILUTITE	CONGLOMERATE	HORNBL-QTZ-DIO	PYROCLASTICS	SILTSTONE
CARBONATES	CONGL. SAND	IGNEOUS (ACIDIC)	QUARTZ DIORITE	SILTST-TUFFACEOUS
CARBONACEOUS MAT	CONGL. SANDSTONE	IGNEOUS (BASIC)	QUARTZ LATITE	TUFF
CARBONACEOUS SH	COQUINA	INTRUSIVES	QUARTZ MONZONITE	VOLCANICLASTICS SEDS
CEMENT CONTAM.	DACITE	KAOLINITIC	RECRYSTALLIZED CALCITE	VOLCANICS
CHALK	DIATOMITE	LIMESTONE	RHYOLITE	
CRYSTALLINE TUFF	DIORITE	LITHIC TUFF	SALT	
CHERT - ARGILL	DOLOSTONE	MARL - DOLO	SAND	



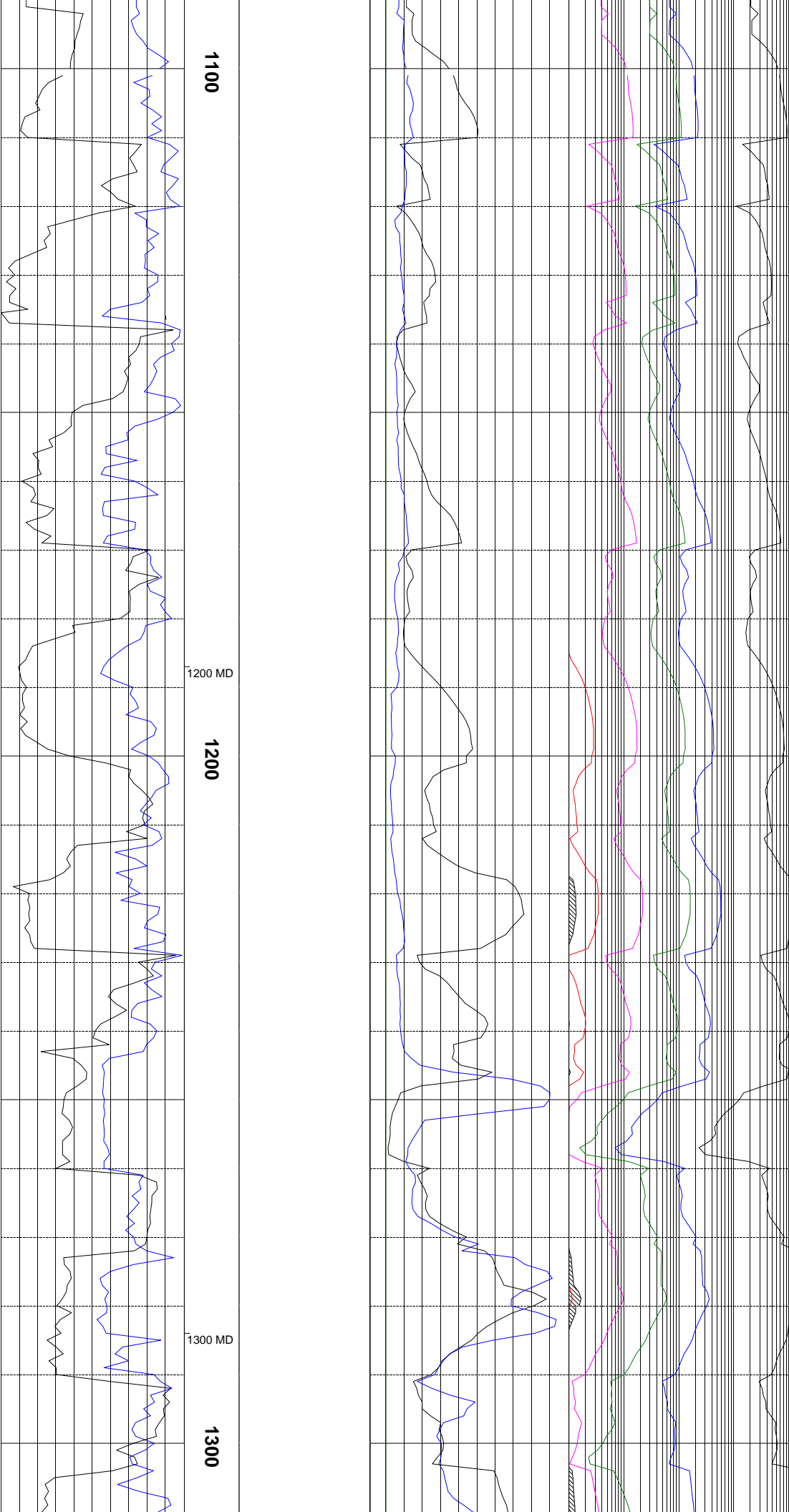






PUMPS DOWN @962' , 1 1/2 HOURS

PUMP # 2 DOWN @1052' , ONE HOUR



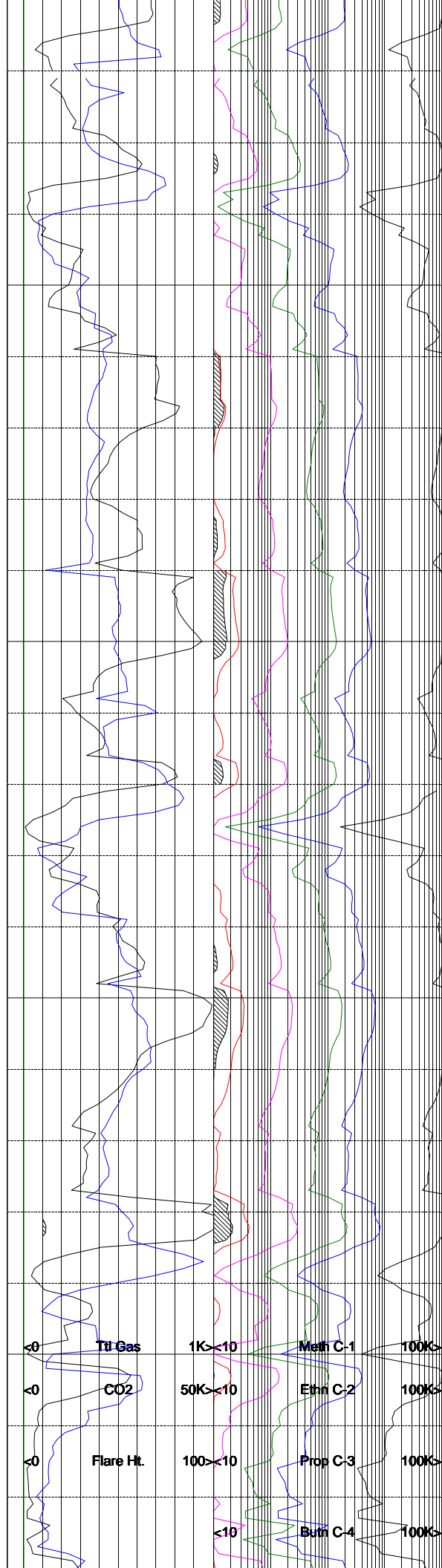
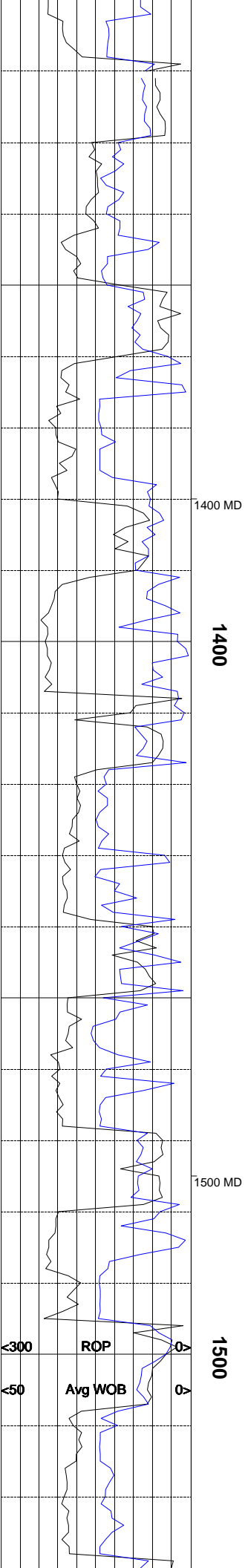
1100

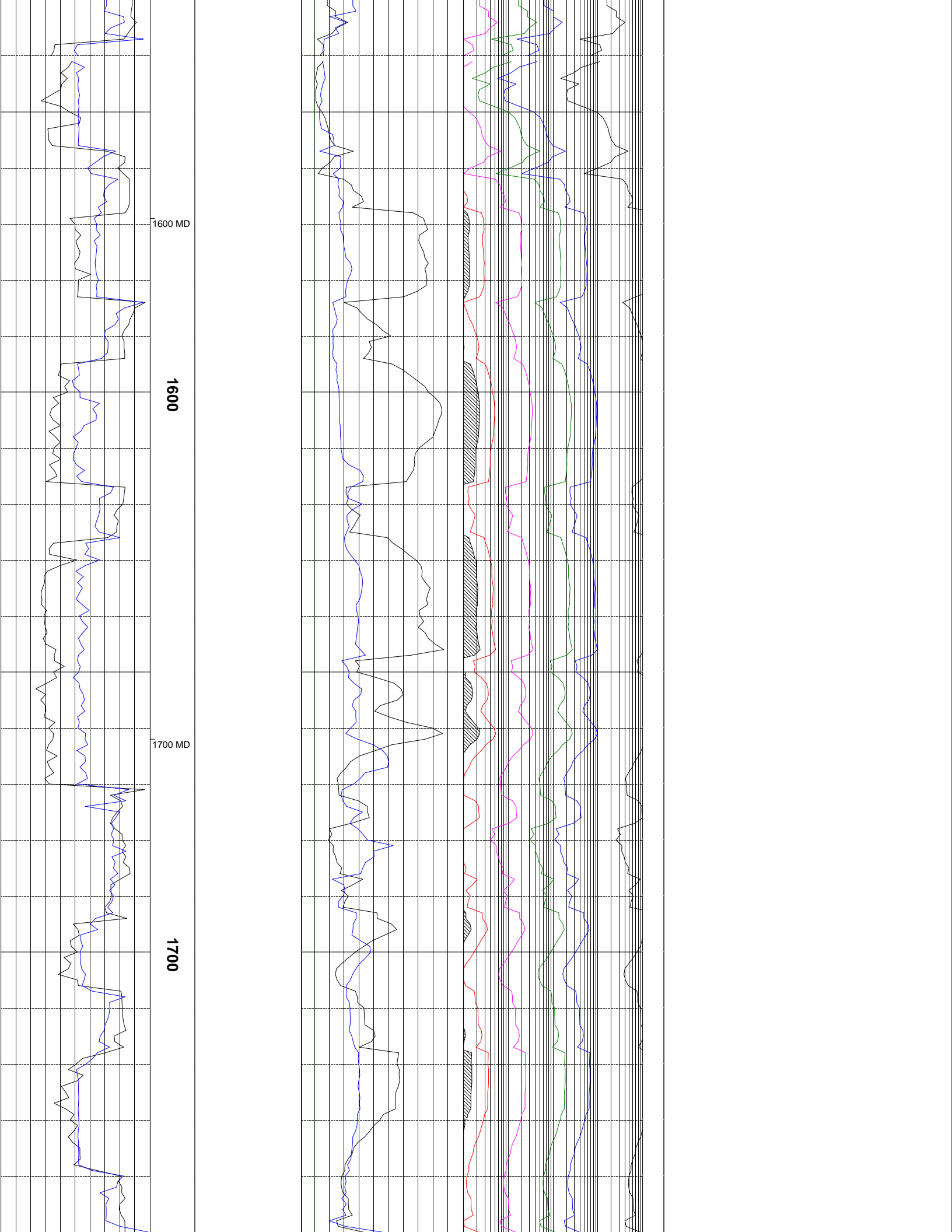
1200 MD

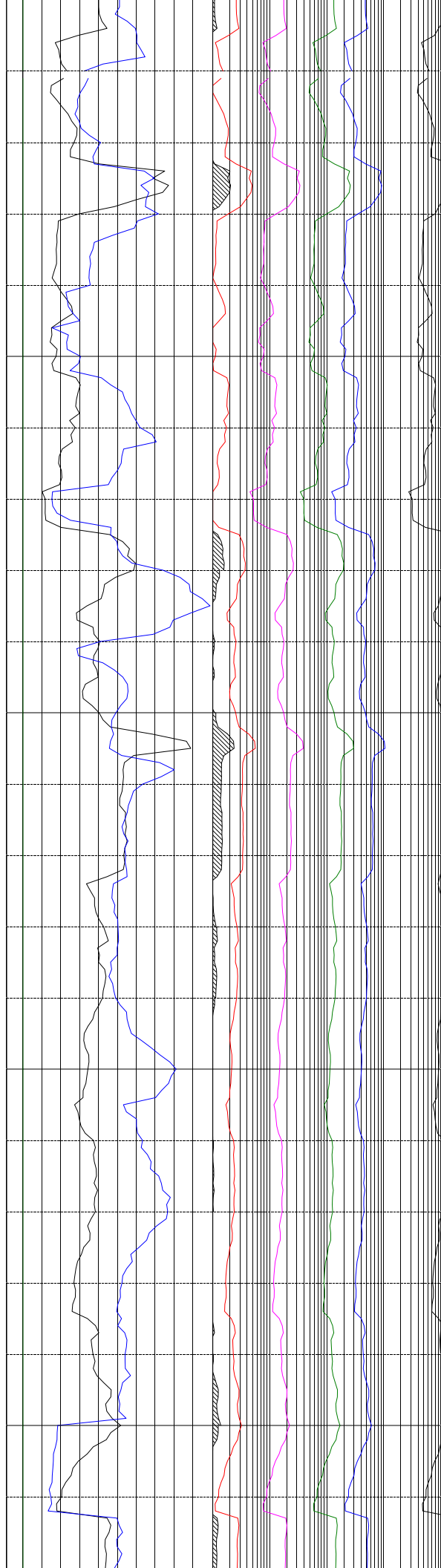
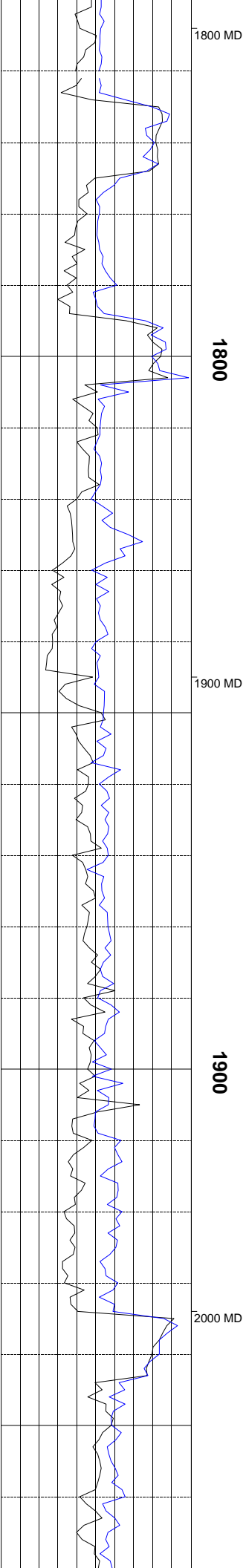
1200

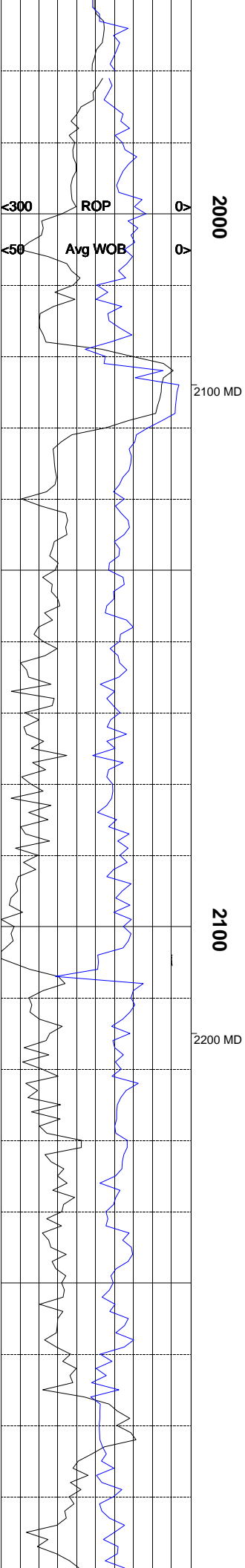
1300 MD

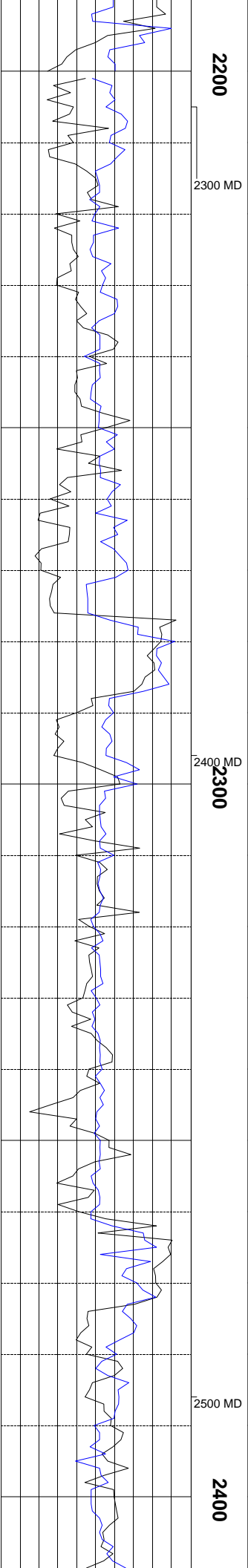
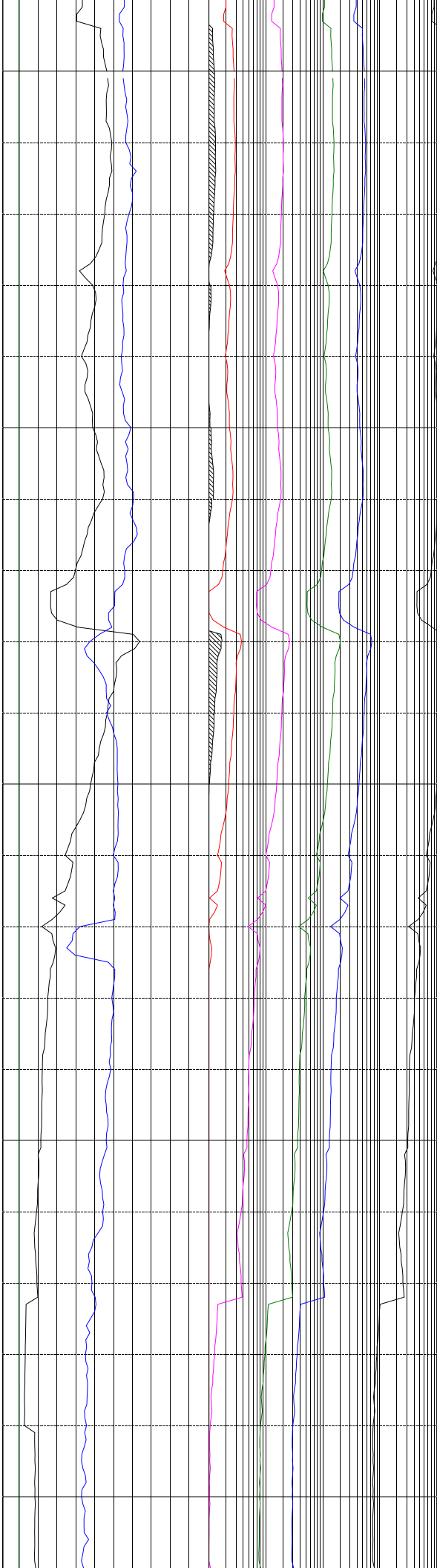
1300

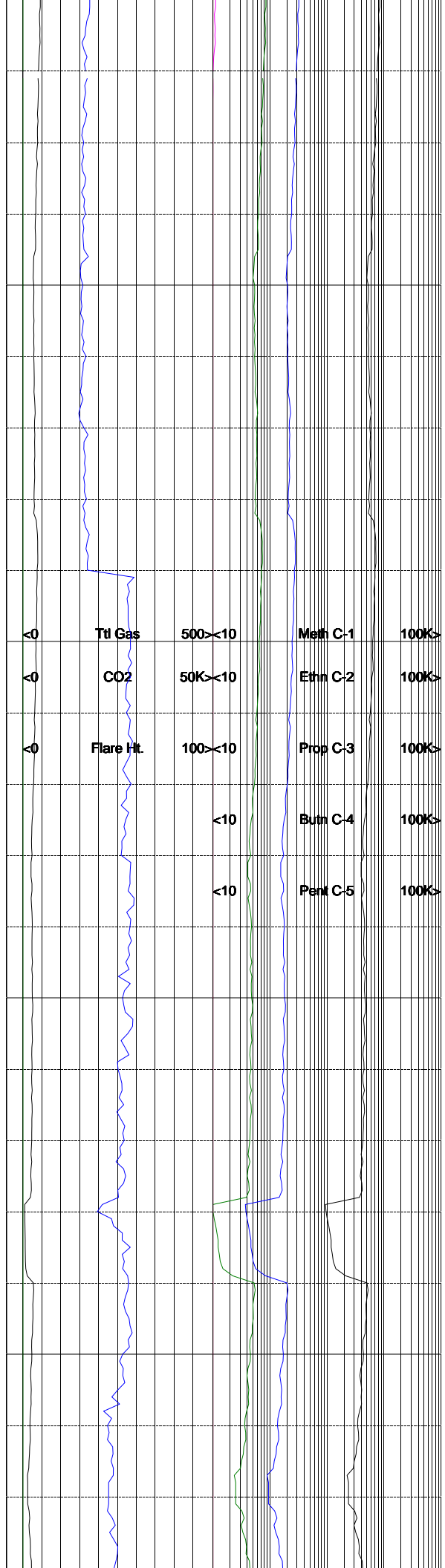
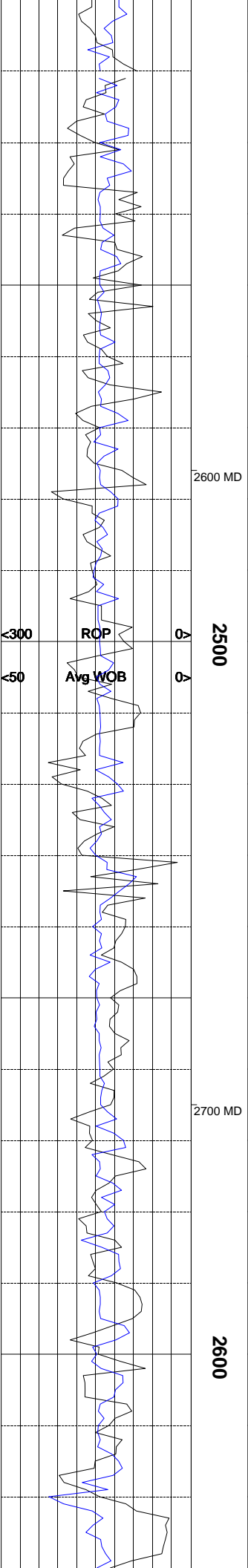


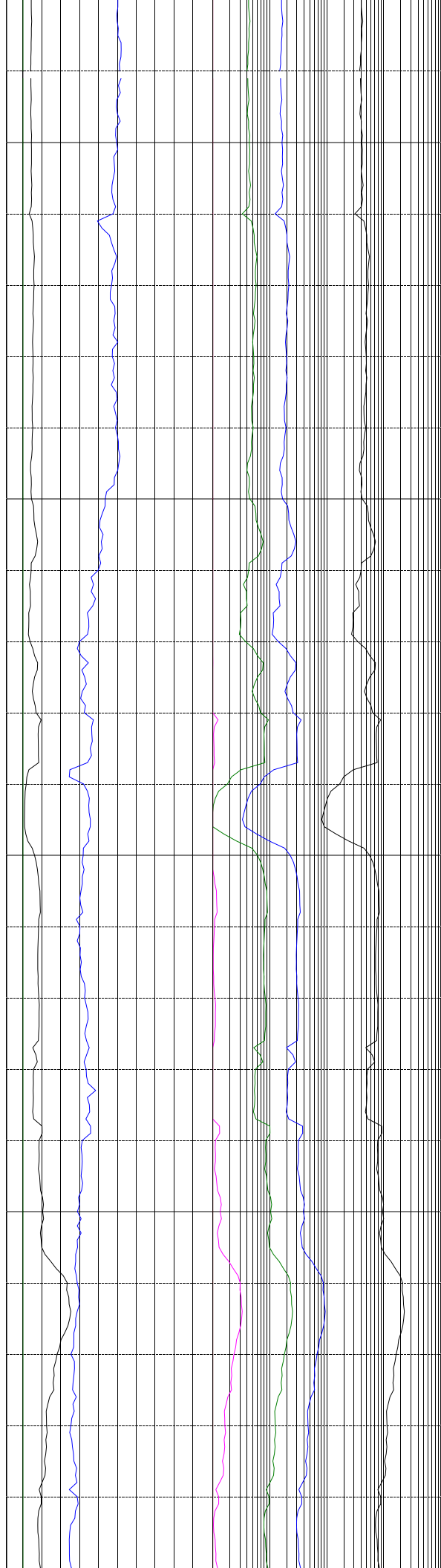
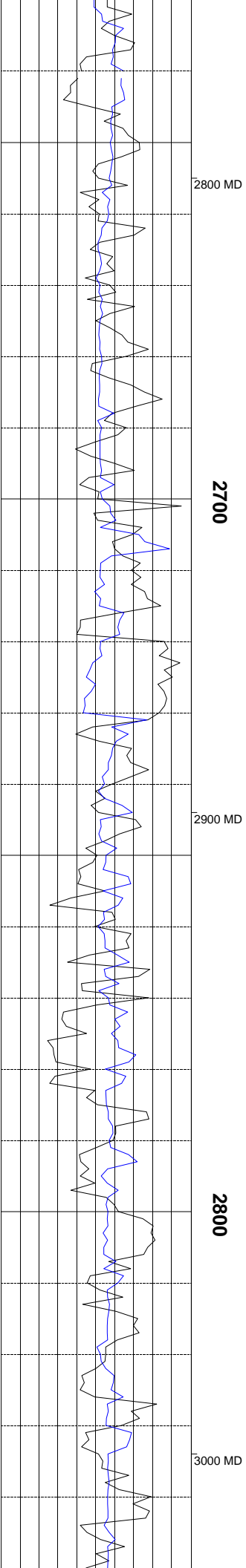


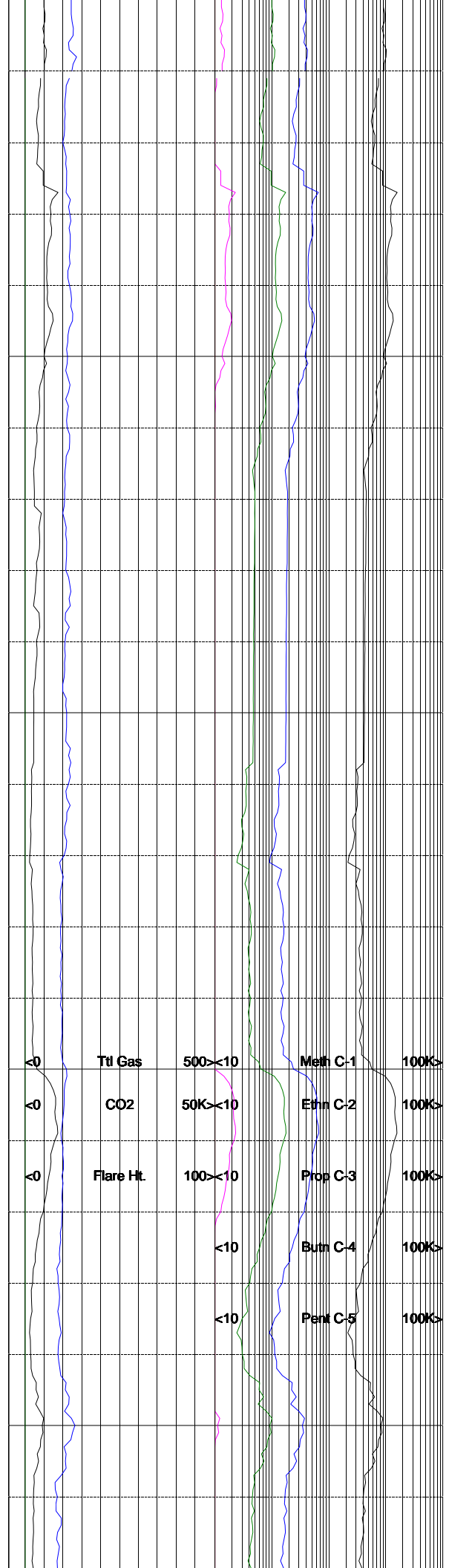
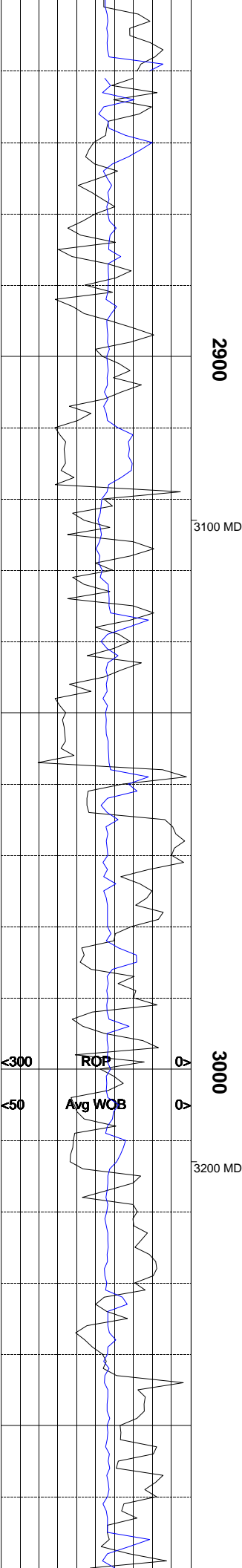


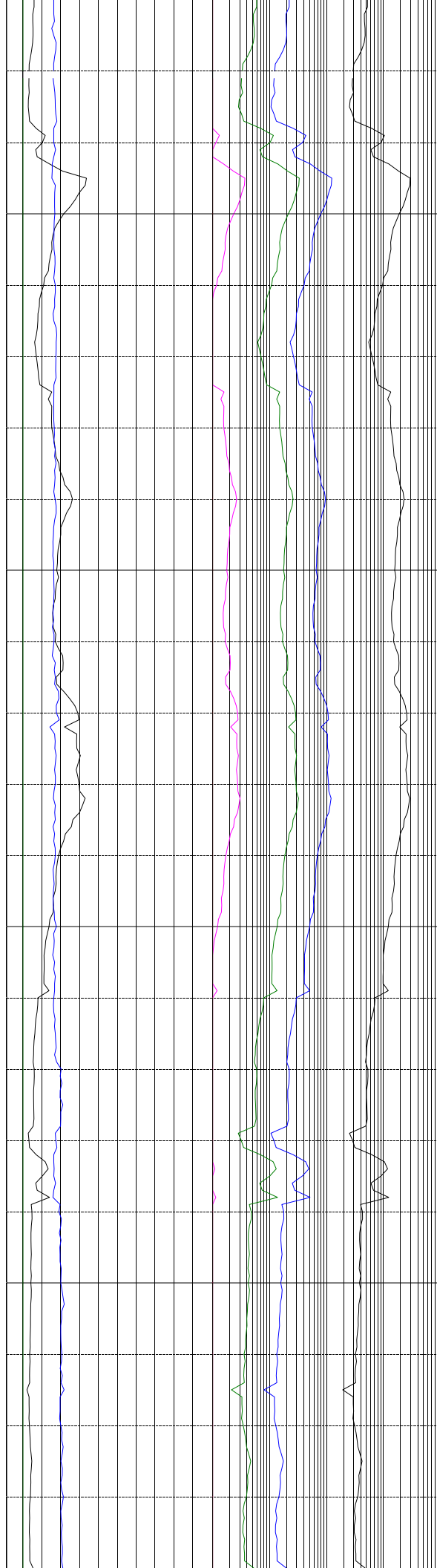
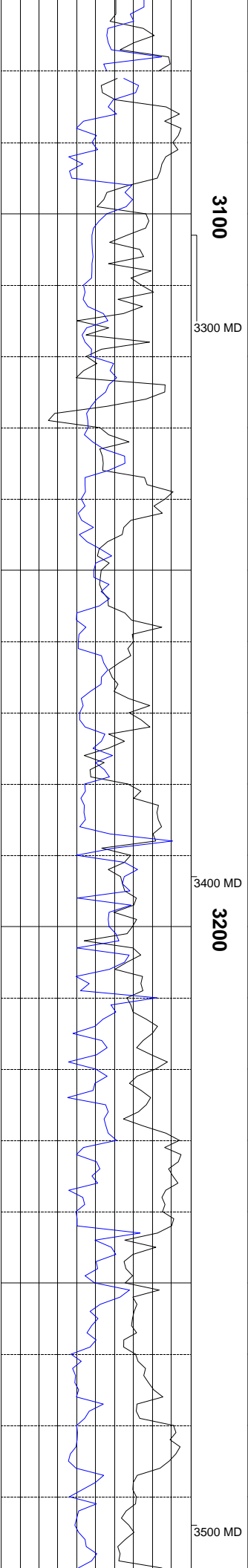












GSA ROCK COLOR CHART, ROCK CONSTITUENTS

ARE DESCRIBED WET AND LISTED IN ORDER OF

MOST ABUNDANT TO LEAST ABUNDANT. ALL

SAMPLE DEPTHS ARE REFERENCED TO RKB.

GAS CHROMATOGRAPHY EQUIPMENT IS

CALIBRATED TO A TEST GAS COMPOSED OF

METHANE = 10000 PPM

ETHANE = 1000 PPM

