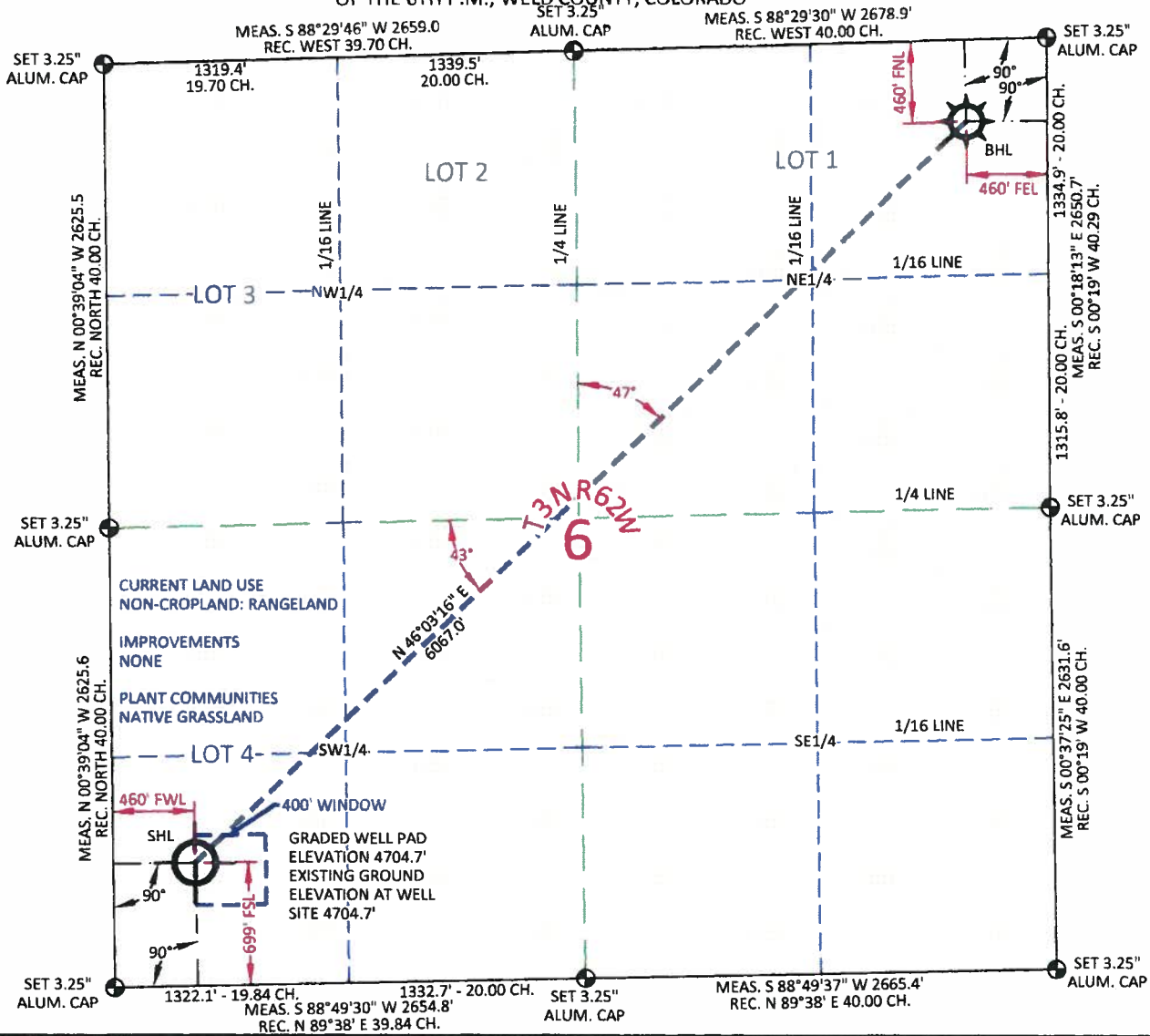


MARATHON FRENCH LAKE 3-62-6-1B

LOCATED WITHIN LOT 4 SECTION 6 T3N R62W
OF THE 6TH P.M., WELD COUNTY, COLORADO



SURFACE HOLE LOCATION

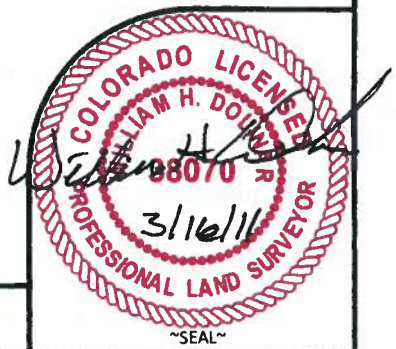
GEOGRAPHIC	LAT.	40.248585°
CO. MIN. SEC.	LONG.	104.374676°
DEC. DEG.	LAT.	40.248604°
MEAS. DATE	LONG.	104.374148°
INSTRUMENT	LAT.	40°14'54.91"
OPERATOR	LONG.	104°22'28.77"
PDOP	LAT.	40°14'54.97"
SHL GRND ELEV.	LONG.	104°22'26.93"
MEASURE DATE	NORTH	1335394.29
INSTRUMENT	EAST	3314111.09
OPERATOR	NORTH	335397.13
PDOP	EAST	2314261.53
SHL GRND ELEV.		

BOTTOM HOLE LOCATION

GEOGRAPHIC	LAT.	40.259988°
CO. MIN. SEC.	LONG.	104.358815°
DEC. DEG.	LAT.	40.260008°
MEAS. DATE	LONG.	104.358306°
INSTRUMENT	LAT.	40°15'35.96"
OPERATOR	LONG.	104°21'31.74"
PDOP	LAT.	40°15'36.03"
SHL GRND ELEV.	LONG.	104°21'29.90"
MEASURE DATE	NORTH	1339604.66
INSTRUMENT	EAST	3318479.36
OPERATOR	NORTH	339607.45
PDOP	EAST	2318629.76
SHL GRND ELEV.		

I, William H. Dolinar, Professional Land Surveyor, CO. RLS # 38070 hereby certify that (in accordance with a request from Anna Walls with Marathon Oil Co, 5555 San Felipe, Houston, TX 77056) I and or personnel under my direction made a survey on the 10th day of March 2011, for the Surface Hole Location and Elevation of Marathon Oil Co. FRENCH LAKE 3-62-6-1B being located within Lot 4, Section 6, T3N R62W and the Bottom Hole Location being located in the NE1/4 NE1/4 of Section 6, T3N, R62W, both being of the 6th P.M., Weld County, State of Colorado.

- All bearings and distances are GRID, based on the Colorado State Plane Coordinate System, North Zone, North American Datum 1983 from GPS observations occupying a WHS control point (5/8" rebar) and having the Location and Elevation derived from an Opus Solution.
- Vertical Datum used is of NAVD 88.
- Record Bearings and Distances as shown are based on the General Land Office Survey plat approved on the 24th day of November 1868.



CONFIDENTIALITY NOTES:

The information contained in this plat is legally privileged and confidential information intended only for the use of the recipients. If you are not the intended recipients, you are hereby notified that any use, dissemination, distribution or copying of this information is strictly prohibited.

WILLIAM H. SMITH & ASSOCIATES P.C.
SURVEYING CONSULTANTS
130 EAST SECOND NORTH
GREEN RIVER, WY 80633
PHONE: 307-875-3638
307-875-3639
www.whsmithpc.com

LEGEND

- FOUND CORNER
- ⊗ CALCULATED CORNER
- NOTHING FOUND

LOCATION:
FRENCH LAKE 3-62-6-1B
WITHIN LOT 4
SECTION 6,
T 3 N, R 62 W,
6TH PM.
WELD COUNTY,
COLORADO

MARATHON OIL COMPANY
PO BOX 3128, HOUSTON TX, 77253
5555 SAN FELIPE, HOUSTON TX, 77056

WELL LOCATION PLAT

SCALE: 1"=1000'
DATE: 03/14/2011
EXHIBIT "A"
SHEET 1 OF 1