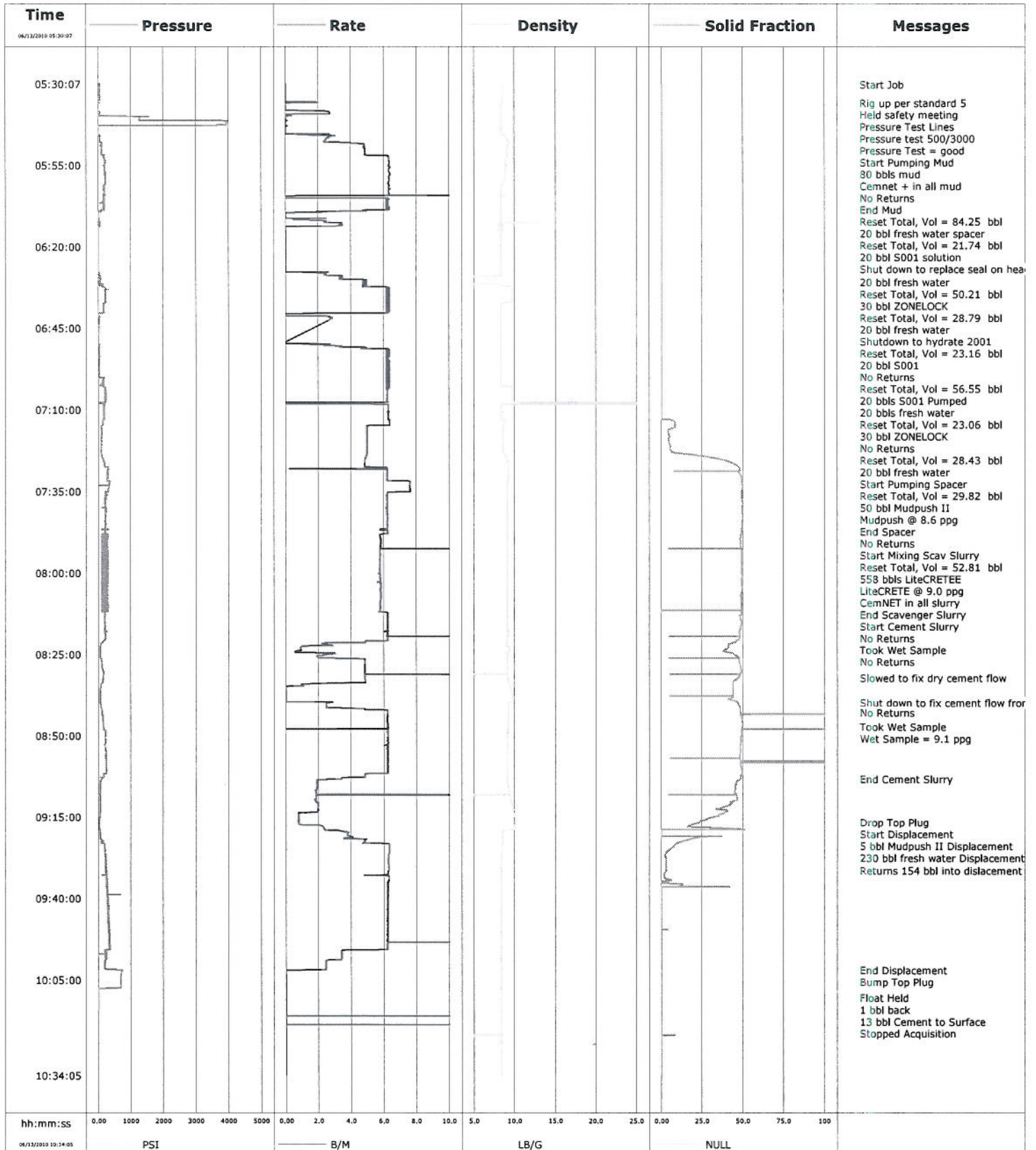


<b>Well</b>	SGU 8505D-36 B36 496	<b>Client</b>	Encana
<b>Field</b>	Story Gulch	<b>SIR No.</b>	B21J-0071
<b>Engineer</b>	Juan Jose Gomez Valadez	<b>Job Type</b>	9 5/8" Surface Casing LiteCRET
<b>Country</b>	United States	<b>Job Date</b>	06-13-2010





# Cementing Service Report

Customer Encana				Job Number B21J-0071			
Well SGU 8505D-36 B36 496 SGU 8505D-36 B35 496			Location (legal)		Schlumberger Location		Job Start Jun/13/2010
Field Story Gulch		Formation Name/Type Shale		Deviation 0 deg	Bit Size 12.3 in	Well MD 3080.0 ft	Well TVD 3080.0 ft
County Garfield		State/Province Colorado		BHP	BHST 115 degF	BHCT 100 degF	Pore Press. Gradient
Well Master		API/UWI					
Rig Name Patterson 308		Drilled For Gas		Service Via Land		Casing/Liner	
				Depth, ft	Size, in	Weight, lb/ft	Grade
							Thread
Offshore Zone		Well Class New		Well Type Development			
				120.0	20.000	94.0	J55
				3080.0	9.630	36.0	J55
Drilling Fluid Type Bentonite		Max. Density 8.30 lb/gal		Plastic Viscosity		Tubing/Drill Pipe	
				Depth,	Size,	Weight,	Grade
							Thread
Service Line Cementing		Job Type 9 5/8" Surface Casing LiteCRET					
Max. Allowed Tub. Press 625 psi		Max. Allowed Ann. Press		WH Connection Single Cement head		Perforations/Open Hole	
				Top,	Bottom,	No. of Shots	Total Interval
							Diameter
				Treat Down Casing	Displacement 234.5 bbl	Packer Type	Packer Depth
				Tubing Vol.	Casing Vol. 234.5 bbl	Annular Vol. 391.0 bbl	Openhole Vol. 689.0 bbl
Casing/Tubing Secured <input checked="" type="checkbox"/> 1 Hole Vol. Circulated prior to Cement <input checked="" type="checkbox"/>				Casing Tools		Squeeze Job	
Lift Pressure 1524 psi				Shoe Type Guide		Squeeze Type	
Pipe Rotated <input type="checkbox"/> Pipe Reciprocated <input type="checkbox"/>				Shoe Depth 3080.0 ft		Tool Type	
No. Centralizers Top Plugs 1 Bottom Plugs				Stage Tool Type		Tool Depth	
Cement Head Type Single				Stage Tool Depth		Tail Pipe Size	
Job Scheduled For Jun/13/2010		Arrived on Location Jun/13/2010		Leave Location Jun/13/2010		Collar Type Diff-Fill	
						Tail Pipe Depth	
				Collar Depth 3037.0 ft		Sqz. Total Vol.	
Date	Time 24-hr clock	Treating Pressure PSI	Flow Rate B/M	Density LB/G	Volume BBL	Solid Fraction NULL	Message
06/13/2010	05:27:13						Started Acquisition
06/13/2010	05:30:07	43	0.0	8.53	0.0	0	
06/13/2010	05:30:23						Start Job
06/13/2010	05:30:23	46	0.0	8.53	0.0	0	
06/13/2010	05:31:13	47	0.0	8.53	0.0	0	
06/13/2010	05:32:33	47	0.0	8.53	0.0	0	
06/13/2010	05:33:53	44	0.0	8.53	0.0	0	
06/13/2010	05:35:13	7	0.0	8.54	0.0	0	
06/13/2010	05:35:58						Rig up per standard 5
06/13/2010	05:35:58	1	1.3	8.39	0.3	0	
06/13/2010	05:35:59						Held safety meeting
06/13/2010	05:35:59	1	0.9	8.39	0.4	0	
06/13/2010	05:36:33	-2	0.0	8.38	0.4	0	
06/13/2010	05:37:53	-3	0.0	8.39	0.4	0	
06/13/2010	05:39:13	58	2.7	8.37	2.4	0	
06/13/2010	05:40:33						Pressure Test Lines
06/13/2010	05:40:33						Pressure test 500/3000
06/13/2010	05:40:33	1281	0.0	8.37	3.0	0	
06/13/2010	05:40:34						Pressure Test = good
06/13/2010	05:40:34	1281	0.0	8.37	3.0	0	
06/13/2010	05:41:53	3946	0.0	8.37	3.0	0	



Well			Field		Job Start		Customer		Job Number
SGU 8505D-36 B36 496 SGU 8505D-36 B35 496			Story Gulch		Jun/13/2010		Encana		B21J-0071
Date	Time 24-hr clock	Treating Pressure PSI	Flow Rate B/M	Density LB/G	Volume BBL	Solid Fraction NULL	Message		
06/13/2010	05:44:33	8	0.0	8.37	3.0	0			
06/13/2010	05:45:53	27	1.5	8.82	3.4	0			
06/13/2010	05:46:03						Start Pumping Mud		
06/13/2010	05:46:03	60	3.0	8.80	3.8	0			
06/13/2010	05:46:04						80 bbls mud		
06/13/2010	05:46:04						Cemnet + in all mud		
06/13/2010	05:46:04	58	3.0	8.79	3.8	0			
06/13/2010	05:47:13	58	2.5	9.10	6.8	0			
06/13/2010	05:47:18						No Returns		
06/13/2010	05:47:18	54	2.5	9.11	7.0	0			
06/13/2010	05:48:33	110	4.8	9.25	10.8	0			
06/13/2010	05:49:53	110	4.9	9.11	17.2	0			
06/13/2010	05:51:13	106	4.8	9.14	23.7	0			
06/13/2010	05:52:33	172	6.3	9.09	30.8	0			
06/13/2010	05:53:53	215	6.3	8.91	39.3	0			
06/13/2010	05:55:13	180	6.3	9.08	47.7	0			
06/13/2010	05:56:33	201	6.3	8.95	56.2	0			
06/13/2010	05:57:53	217	6.4	8.84	64.6	0			
06/13/2010	05:59:13	229	6.3	8.87	73.1	0			
06/13/2010	06:00:33	223	6.3	8.85	81.5	0			
06/13/2010	06:00:54						End Mud		
06/13/2010	06:00:54	207	6.3	8.55	83.7	0			
06/13/2010	06:00:59						Reset Total, Vol = 84.25 bbl		
06/13/2010	06:00:59	199	6.3	8.46	84.3	0			
06/13/2010	06:01:01						20 bbl fresh water spacer		
06/13/2010	06:01:01	188	6.3	8.44	84.5	0			
06/13/2010	06:01:53	194	6.3	8.38	89.9	0			
06/13/2010	06:03:13	189	6.3	8.36	98.4	0			
06/13/2010	06:04:23						Reset Total, Vol = 21.74 bbl		
06/13/2010	06:04:23	187	6.5	8.51	106.0	0			
06/13/2010	06:04:28						20 bbl S001 solution		
06/13/2010	06:04:28	189	0.7	8.29	106.3	0			
06/13/2010	06:04:33	176	0.1	8.35	106.3	0			
06/13/2010	06:05:53	181	6.2	8.36	110.9	0			
06/13/2010	06:07:13	196	6.3	8.37	119.2	0			
06/13/2010	06:08:33	175	6.4	8.37	127.5	0			
06/13/2010	06:09:53	11	0.0	8.36	131.8	0			
06/13/2010	06:11:13	10	0.0	8.36	131.8	0			
06/13/2010	06:12:33	45	2.4	8.37	133.7	0			
06/13/2010	06:13:53	21	0.9	8.59	138.0	0			
06/13/2010	06:15:00						Shut down to replace seal on head		
06/13/2010	06:15:00	11	0.0	8.03	138.0	0			
06/13/2010	06:15:13	12	0.0	8.64	138.0	0			
06/13/2010	06:16:33	11	0.0	8.30	138.0	0			
06/13/2010	06:17:53	6	0.0	8.35	138.0	0			
06/13/2010	06:19:13	7	0.0	8.35	138.0	0			
06/13/2010	06:20:33	7	0.0	8.35	138.0	0			
06/13/2010	06:21:53	8	0.0	8.39	138.0	0			
06/13/2010	06:23:13	8	0.0	8.40	138.0	0			
06/13/2010	06:24:33	9	0.0	8.40	138.0	0			
06/13/2010	06:25:53	8	0.0	8.40	138.0	0			
06/13/2010	06:27:13	7	0.0	8.40	138.0	0			
06/13/2010	06:28:33	42	2.5	8.39	139.5	0			
06/13/2010	06:29:53	69	3.5	0.19	143.6	0			

Well			Field		Job Start		Customer		Job Number
SGU 8505D-36 B36 496 SGU 8505D-36 B35 496			Story Gulch		Jun/13/2010		Encana		B2IJ-0071
Date	Time 24-hr clock	Treating Pressure PSI	Flow Rate B/M	Density LB/G	Volume BBL	Solid Fraction NULL	Message		
06/13/2010	06:30:57	43	4.7	0.00	148.3	0			
06/13/2010	06:31:13	70	4.8	0.00	149.6	0			
06/13/2010	06:32:33	211	6.2	9.71	156.1	0			
06/13/2010	06:32:34						Reset Total, Vol = 50.21 bbl		
06/13/2010	06:32:34	220	6.3	9.71	156.2	0			
06/13/2010	06:32:38						30 bbl ZONELOCK		
06/13/2010	06:32:38	224	6.2	9.72	156.6	0			
06/13/2010	06:33:53	221	6.3	9.75	164.4	0			
06/13/2010	06:35:13	217	6.3	9.75	172.7	0			
06/13/2010	06:36:33	215	6.2	9.75	181.0	0			
06/13/2010	06:37:11						Reset Total, Vol = 28.79 bbl		
06/13/2010	06:37:11	233	6.3	8.89	185.0	0			
06/13/2010	06:37:19						20 bbl fresh water		
06/13/2010	06:37:19	181	6.3	8.45	185.8	0			
06/13/2010	06:37:53	177	6.2	8.37	189.3	0			
06/13/2010	06:39:13	174	6.3	8.37	197.7	0			
06/13/2010	06:40:33	10	0.7	8.37	205.5	0			
06/13/2010	06:41:53	41	2.7	8.37	206.8	0			
06/13/2010	06:42:20						Shutdown to hydrate 2001		
06/13/2010	06:42:20	43	2.7	8.37	208.0	0			
06/13/2010	06:49:35						Reset Total, Vol = 23.16 bbl		
06/13/2010	06:49:35	0	0.0	8.37	208.1	0			
06/13/2010	06:49:40						20 bbl S001		
06/13/2010	06:49:40	1	0.0	8.37	208.1	0			
06/13/2010	06:49:53	1	0.0	8.37	208.1	0			
06/13/2010	06:51:13	37	5.0	8.37	212.3	0			
06/13/2010	06:52:33	41	6.2	8.37	220.3	0			
06/13/2010	06:53:53	41	6.3	8.37	228.7	0			
06/13/2010	06:55:13	34	6.2	8.37	237.0	0			
06/13/2010	06:55:15						No Returns		
06/13/2010	06:55:15	38	6.4	8.37	237.2	0			
06/13/2010	06:56:33	37	6.3	8.37	245.3	0			
06/13/2010	06:57:53	33	6.3	8.37	253.6	0			
06/13/2010	06:59:13	37	6.2	8.37	261.9	0			
06/13/2010	06:59:40						Reset Total, Vol = 56.55 bbl		
06/13/2010	06:59:40	37	6.2	8.37	264.7	0			
06/13/2010	06:59:41						20 bbls S001 Pumped		
06/13/2010	06:59:41	37	6.3	8.37	264.8	0			
06/13/2010	06:59:42						20 bbls fresh water		
06/13/2010	06:59:42	35	6.3	8.37	264.9	0			
06/13/2010	07:00:33	159	6.3	8.37	270.2	0			
06/13/2010	07:01:53	127	6.2	8.36	278.5	0			
06/13/2010	07:03:13	207	6.3	9.69	286.8	0			
06/13/2010	07:03:22						Reset Total, Vol = 23.06 bbl		
06/13/2010	07:03:22	214	6.3	9.71	287.8	0			
06/13/2010	07:03:23						30 bbl ZONELOCK		
06/13/2010	07:03:23	206	6.2	9.71	287.9	0			
06/13/2010	07:04:33	212	6.2	9.74	295.1	0			
06/13/2010	07:05:53	223	6.2	9.75	303.4	0			
06/13/2010	07:06:42						No Returns		
06/13/2010	07:06:42	210	6.2	9.75	308.5	0			
06/13/2010	07:07:13	210	6.2	9.75	311.7	0			
06/13/2010	07:08:27						Reset Total, Vol = 28.43 bbl		
06/13/2010	07:08:27	169	6.1	8.39	316.2	0			



Well			Field		Job Start		Customer		Job Number
SGU 8505D-36 B36 496 SGU 8505D-36 B35 496			Story Gulch		Jun/13/2010		Encana		B21J-0071
Date	Time 24-hr clock	Treating Pressure PSI	Flow Rate B/M	Density LB/G	Volume BBL	Solid Fraction NULL	Message		
06/13/2010	07:08:38						20 bbl fresh water		
06/13/2010	07:08:38	175	6.3	8.37	317.3	0			
06/13/2010	07:09:53	177	6.3	8.37	325.2	0			
06/13/2010	07:11:13	176	6.3	8.37	333.5	0			
06/13/2010	07:12:30						Start Pumping Spacer		
06/13/2010	07:12:30	179	6.3	8.37	341.6	0			
06/13/2010	07:12:31						Reset Total, Vol = 29.82 bbl		
06/13/2010	07:12:31						50 bbl Mudpush II		
06/13/2010	07:12:31	193	6.3	8.37	341.7	0			
06/13/2010	07:12:32						Mudpush @ 8.6 ppg		
06/13/2010	07:12:32	193	6.3	8.37	341.8	0			
06/13/2010	07:12:33	185	6.3	8.37	341.9	0			
06/13/2010	07:13:53	149	6.4	8.80	350.4	8			
06/13/2010	07:15:13	97	5.0	8.63	358.4	8			
06/13/2010	07:16:33	96	5.0	8.63	365.0	4			
06/13/2010	07:17:53	99	5.0	8.61	371.6	5			
06/13/2010	07:19:13	98	5.0	8.61	378.3	5			
06/13/2010	07:20:33	106	5.0	8.60	384.9	5			
06/13/2010	07:21:53	94	5.0	8.59	391.6	6			
06/13/2010	07:22:45						End Spacer		
06/13/2010	07:22:45	88	5.0	8.59	395.9	6			
06/13/2010	07:22:49						No Returns		
06/13/2010	07:22:49	90	5.0	8.59	396.2	6			
06/13/2010	07:23:12						Start Mixing Scav Slurry		
06/13/2010	07:23:12	95	5.0	8.61	398.1	8			
06/13/2010	07:23:13	96	5.0	8.62	398.2	8			
06/13/2010	07:23:20						Reset Total, Vol = 52.81 bbl		
06/13/2010	07:23:20	90	5.0	8.66	398.8	10			
06/13/2010	07:23:23						558 bbls LiteCRETEE		
06/13/2010	07:23:23	92	5.0	8.67	399.1	11			
06/13/2010	07:23:24						LiteCRETE @ 9.0 ppg		
06/13/2010	07:23:24	99	5.0	8.68	399.1	11			
06/13/2010	07:23:25						CemNET in all slurry		
06/13/2010	07:23:25	99	5.0	8.69	399.2	11			
06/13/2010	07:24:33	127	4.9	8.97	404.8	29			
06/13/2010	07:25:53	177	4.9	9.17	411.3	41			
06/13/2010	07:27:13	201	4.8	9.28	417.8	47			
06/13/2010	07:28:33	292	6.2	9.35	425.4	48			
06/13/2010	07:29:53	304	6.2	9.28	433.7	49			
06/13/2010	07:31:13	275	6.2	9.22	442.0	49			
06/13/2010	07:32:32						End Scavenger Slurry		
06/13/2010	07:32:32	343	7.6	9.15	451.1	50			
06/13/2010	07:32:33	336	7.6	9.15	451.3	50			
06/13/2010	07:32:34						Start Cement Slurry		
06/13/2010	07:32:34	336	7.6	9.15	451.4	50			
06/13/2010	07:33:53	320	7.6	9.12	461.4	50			
06/13/2010	07:34:59						No Returns		
06/13/2010	07:34:59	303	7.6	9.11	469.8	50			
06/13/2010	07:35:13	229	6.8	9.10	471.5	50			
06/13/2010	07:36:33	221	6.2	9.10	479.8	49			
06/13/2010	07:37:53	217	6.2	9.12	488.1	50			
06/13/2010	07:39:13	221	6.2	9.12	496.4	50			
06/13/2010	07:40:33	231	6.2	9.14	504.7	50			
06/13/2010	07:41:53	229	6.2	9.15	513.0	50			

Well			Field		Job Start		Customer		Job Number		
SGU 8505D-36 B36 496 SGU 8505D-36 B35 496			Story Gulch		Jun/13/2010		Encana		B21J-0071		
Date	Time 24-hr clock	Treating Pressure PSI	Flow Rate B/M	Density LB/G	Volume BBL	Solid Fraction NULL	Message				
06/13/2010	07:44:33	225	6.2	9.14	529.6	50					
06/13/2010	07:45:53	217	6.2	9.14	537.9	50					
06/13/2010	07:47:10						Took Wet Sample				
06/13/2010	07:47:10	220	6.2	9.14	545.7	49					
06/13/2010	07:47:13	211	6.2	9.14	546.0	49					
06/13/2010	07:48:33	274	5.7	9.13	554.1	49					
06/13/2010	07:49:53	108	5.8	9.12	561.8	49					
06/13/2010	07:51:13	279	5.8	9.11	569.6	49					
06/13/2010	07:52:33	224	5.8	9.13	587.2	49					
06/13/2010	07:53:53	122	5.8	9.14	594.9	49					
06/13/2010	07:55:13	187	5.8	9.14	602.6	49					
06/13/2010	07:56:33	292	5.8	9.15	610.3	49					
06/13/2010	07:57:53	256	5.8	9.18	618.0	50					
06/13/2010	07:59:13	233	5.8	9.16	625.6	49					
06/13/2010	08:00:33	112	5.8	9.16	633.3	50					
06/13/2010	08:01:53	103	5.8	9.17	641.0	49					
06/13/2010	08:02:22						No Returns				
06/13/2010	08:02:22	164	5.8	9.16	643.9	49					
06/13/2010	08:03:13	127	5.8	9.16	648.8	49					
06/13/2010	08:04:33	294	5.8	9.16	656.5	50					
06/13/2010	08:05:53	286	5.8	9.17	664.3	50					
06/13/2010	08:07:13	196	5.8	9.15	672.0	49					
06/13/2010	08:08:33	279	5.8	9.16	679.8	49					
06/13/2010	08:09:53	246	5.8	9.16	687.5	49					
06/13/2010	08:11:13	152	5.8	9.13	695.2	49					
06/13/2010	08:12:33	211	6.2	9.15	703.1	49					
06/13/2010	08:13:53	199	6.2	9.12	711.5	48					
06/13/2010	08:15:13	219	6.2	9.14	719.8	49					
06/13/2010	08:16:33	208	6.2	9.15	728.1	49					
06/13/2010	08:17:53	260	6.3	9.27	736.4	48					
06/13/2010	08:19:13	229	6.2	9.18	744.7	48					
06/13/2010	08:20:33	217	6.2	9.13	765.4	47					
06/13/2010	08:21:53	82	2.4	9.00	771.3	42					
06/13/2010	08:23:13	67	0.9	9.36	773.5	40					
06/13/2010	08:24:33	62	1.3	8.96	774.6	43					
06/13/2010	08:25:53	62	2.0	9.06	777.5	47					
06/13/2010	08:27:13	103	4.8	9.11	782.8	48					
06/13/2010	08:28:33	123	4.8	9.13	789.2	49					
06/13/2010	08:29:53	143	4.9	9.12	795.7	49					
06/13/2010	08:31:13	164	4.8	9.13	815.3	48					
06/13/2010	08:32:13						Slowed to fix dry cement flow				
06/13/2010	08:32:13	153	4.9	9.18	820.0	47					
06/13/2010	08:32:33	150	4.9	9.19	821.6	47					
06/13/2010	08:33:53	101	2.7	9.21	828.0	44					
06/13/2010	08:35:13	75	0.0	9.41	829.3	44					
06/13/2010	08:36:33	68	0.0	9.67	829.3	44					
06/13/2010	08:37:53	63	0.0	9.80	829.3	44					
06/13/2010	08:39:13	59	0.0	9.73	829.3	45					
06/13/2010	08:39:50						Shut down to fix cement flow from silo				
06/13/2010	08:39:50	63	2.9	9.45	829.7	47					
06/13/2010	08:40:33	77	2.5	9.23	831.5	47					
06/13/2010	08:41:53	114	4.8	9.24	835.4	48					
06/13/2010	08:42:51						No Returns				
06/13/2010	08:42:51	124	6.2	9.21	841.1	49					



Well			Field		Job Start		Customer		Job Number
SGU 8505D-36 B36 496 SGU 8505D-36 B35 496			Story Gulch		Jun/13/2010		Encana		B21J-0071
Date	Time 24-hr clock	Treating Pressure PSI	Flow Rate B/M	Density LB/G	Volume BBL	Solid Fraction NULL	Message		
06/13/2010	08:44:33	142	6.2	9.19	851.7	49			
06/13/2010	08:45:53	151	6.2	9.19	860.0	50			
06/13/2010	08:47:13						Took Wet Sample		
06/13/2010	08:47:13						Wet Sample = 9.1 ppg		
06/13/2010	08:47:13	161	6.2	9.19	868.3	50			
06/13/2010	08:48:33	226	6.2	9.14	876.4	49			
06/13/2010	08:49:53	219	6.3	9.14	884.8	49			
06/13/2010	08:51:13	223	6.2	9.11	893.1	49			
06/13/2010	08:52:33	222	6.2	9.12	901.4	49			
06/13/2010	08:53:53	225	6.2	9.11	909.7	49			
06/13/2010	08:55:13	245	6.2	9.09	918.0	49			
06/13/2010	08:56:33	237	6.2	9.09	926.3	48			
06/13/2010	08:57:53	243	6.2	9.08	934.7	1089			
06/13/2010	08:59:13	246	6.2	9.09	943.0	49			
06/13/2010	09:00:33	255	6.2	9.10	951.3	49			
06/13/2010	09:01:53	175	4.8	9.10	959.3	49			
06/13/2010	09:03:13						End Cement Slurry		
06/13/2010	09:03:13	120	3.4	9.12	965.2	49			
06/13/2010	09:04:33	66	1.9	9.15	968.2	46			
06/13/2010	09:05:53	61	1.9	9.26	970.7	46			
06/13/2010	09:07:13	59	1.8	9.31	973.2	45			
06/13/2010	09:08:33	62	1.9	9.46	991.6	46			
06/13/2010	09:09:53	62	1.8	9.54	994.0	46			
06/13/2010	09:11:13	65	2.0	9.66	996.5	42			
06/13/2010	09:12:33	65	2.0	9.72	999.2	34			
06/13/2010	09:13:53	55	0.8	10.05	1001.5	38			
06/13/2010	09:15:13	44	0.8	10.09	1002.5	30			
06/13/2010	09:16:33						Drop Top Plug		
06/13/2010	09:16:33	37	0.8	10.09	1003.5	23			
06/13/2010	09:16:45						Start Displacement		
06/13/2010	09:16:45	36	0.8	10.10	1003.7	23			
06/13/2010	09:17:53	43	2.2	10.00	1005.1	17			
06/13/2010	09:19:02						5 bbl Mudpush II Displacement		
06/13/2010	09:19:02	45	2.4	9.73	1007.8	0			
06/13/2010	09:19:03						230 bbl fresh water Displacement		
06/13/2010	09:19:03	45	2.4	9.66	1007.8	0			
06/13/2010	09:19:13	48	3.2	8.90	1008.3	0			
06/13/2010	09:20:33	64	3.7	8.46	1013.1	0			
06/13/2010	09:21:53	92	4.8	8.63	1018.3	18			
06/13/2010	09:23:13	194	5.9	8.49	1024.7	10			
06/13/2010	09:24:33	206	6.3	8.44	1033.2	7			
06/13/2010	09:25:53	217	6.3	8.41	1041.6	4			
06/13/2010	09:27:13	215	6.3	8.40	1050.0	2			
06/13/2010	09:28:33	239	6.3	8.39	1058.4	3			
06/13/2010	09:29:53	232	6.3	8.39	1066.7	3			
06/13/2010	09:31:13	236	6.3	8.37	1075.1	3			
06/13/2010	09:31:30						Returns 154 bbl into displacement		
06/13/2010	09:31:30	245	6.3	8.39	1076.9	3			
06/13/2010	09:32:33	259	6.3	8.39	1083.5	2			
06/13/2010	09:33:53	248	6.3	8.37	1091.7	3			
06/13/2010	09:35:13	261	6.2	8.39	1100.1	0			
06/13/2010	09:36:33	274	6.2	8.38	1108.4	0			
06/13/2010	09:37:53	266	6.2	8.38	1116.4	0			
06/13/2010	09:39:13	278	6.2	8.38	1124.7	0			

Well			Field		Job Start		Customer		Job Number
SGU 8505D-36 B36 496 SGU 8505D-36 B35 496			Story Gulch		Jun/13/2010		Encana		B2IJ-0071
Date	Time 24-hr clock	Treating Pressure PSI	Flow Rate B/M	Density LB/G	Volume BBL	Solid Fraction NULL	Message		
06/13/2010	09:41:53	287	6.2	8.38	1141.3	0			
06/13/2010	09:43:13	292	6.2	8.38	1149.6	0			
06/13/2010	09:44:33	296	6.2	8.38	1157.9	0			
06/13/2010	09:45:53	318	6.2	8.38	1166.2	0			
06/13/2010	09:47:13	321	6.2	8.38	1174.5	0			
06/13/2010	09:48:33	307	6.2	8.38	1182.8	0			
06/13/2010	09:49:53	318	6.2	8.38	1191.1	0			
06/13/2010	09:51:13	328	6.2	8.38	1199.4	0			
06/13/2010	09:52:33	326	6.2	8.38	1207.7	0			
06/13/2010	09:53:53	326	6.2	8.38	1235.6	0			
06/13/2010	09:55:13	330	6.2	8.39	1243.9	0			
06/13/2010	09:56:33	205	3.4	8.38	1250.1	0			
06/13/2010	09:57:53	235	3.4	8.39	1254.7	0			
06/13/2010	09:59:13	195	2.4	8.38	1258.9	0			
06/13/2010	10:00:33	195	2.4	8.38	1262.2	0			
06/13/2010	10:01:53						End Displacement		
06/13/2010	10:01:53						Bump Top Plug		
06/13/2010	10:01:53	654	2.4	8.38	1265.4	0			
06/13/2010	10:03:13	702	0.0	8.38	1265.6	0			
06/13/2010	10:04:33	697	0.0	8.39	1265.6	0			
06/13/2010	10:05:53	695	0.0	8.39	1265.6	0			
06/13/2010	10:07:13	694	0.0	8.38	1265.6	0			
06/13/2010	10:08:33	1	0.0	8.38	1265.6	0			
06/13/2010	10:09:53	1	0.0	8.38	1265.6	0			
06/13/2010	10:10:22						Float Held		
06/13/2010	10:10:22						1 bbl back		
06/13/2010	10:10:22	1	0.0	8.39	1265.6	0			
06/13/2010	10:10:23						13 bbl Cement to Surface		
06/13/2010	10:10:23	1	0.0	8.39	1265.6	0			
06/13/2010	10:11:13	1	0.0	8.38	1265.6	0			
06/13/2010	10:12:33	1	0.0	8.39	1265.6	0			
06/13/2010	10:13:53	0	0.0	8.39	1265.6	0			
06/13/2010	10:15:13	-2	0.0	8.39	1265.6	0			
06/13/2010	10:16:33	-2	0.0	8.39	1285.8	0			
06/13/2010	10:17:53	-2	0.0	8.39	1285.8	0			
06/13/2010	10:19:13	-1	0.0	8.39	1306.0	0			
06/13/2010	10:20:33	-2	0.0	8.39	1306.0	0			
06/13/2010	10:21:53	-3	0.0	8.39	1306.0	0			
06/13/2010	10:23:13	-3	0.0	8.39	1306.0	0			
06/13/2010	10:24:33	-3	0.0	8.39	1306.0	0			
06/13/2010	10:25:53	-2	0.0	8.39	1306.0	0			
06/13/2010	10:27:13	-2	0.0	8.39	1306.0	0			
06/13/2010	10:28:33	-2	0.0	8.38	1306.0	0			
06/13/2010	10:29:53	-2	0.0	8.39	1306.0	0			
06/13/2010	10:31:13	-2	0.0	8.38	1306.0	0			
06/13/2010	10:32:33	-2	0.0	8.38	1306.0	0			
06/13/2010	10:33:53	-2	0.0	8.38	1306.0	0			



<b>Well</b> SGU 8505D-36 B36 496 SGU 8505D-36 B35 496	<b>Field</b> Story Gulch	<b>Job Start</b> Jun/13/2010	<b>Customer</b> Encana	<b>Job Number</b> B21J-0071
--	-----------------------------	---------------------------------	---------------------------	--------------------------------

### Post Job Summary

Average Pump Rates, bbl/min					Volume of Fluid Injected, bbl			
Slurry 5.0	N2	Mud	Maximum Rate 8.0	Total Slurry 558.0	Mud 80.0	Spacer 50.0	N2	
Treating Pressure Summary, psi					Breakdown Fluid			
Maximum 650	Final 650	Average	Bump Plug to 650	Breakdown	Type	Volume	Density	
Avg. N2 Percent	Designed Slurry Volume 558.0 bbl	Displacement 235.0 bbl	Mix Water Temp 65 degF	Cement Circulated to Surface? <input checked="" type="checkbox"/>	Volume 13.0 bbl			
Customer or Authorized Representative Floyd Roberts		Schlumberger Supervisor Juan Jose Gomez Valadez		Washed Thru Perfs <input type="checkbox"/>	To			
				Circulation Lost <input checked="" type="checkbox"/>	Job Completed <input checked="" type="checkbox"/>			
				-	-			