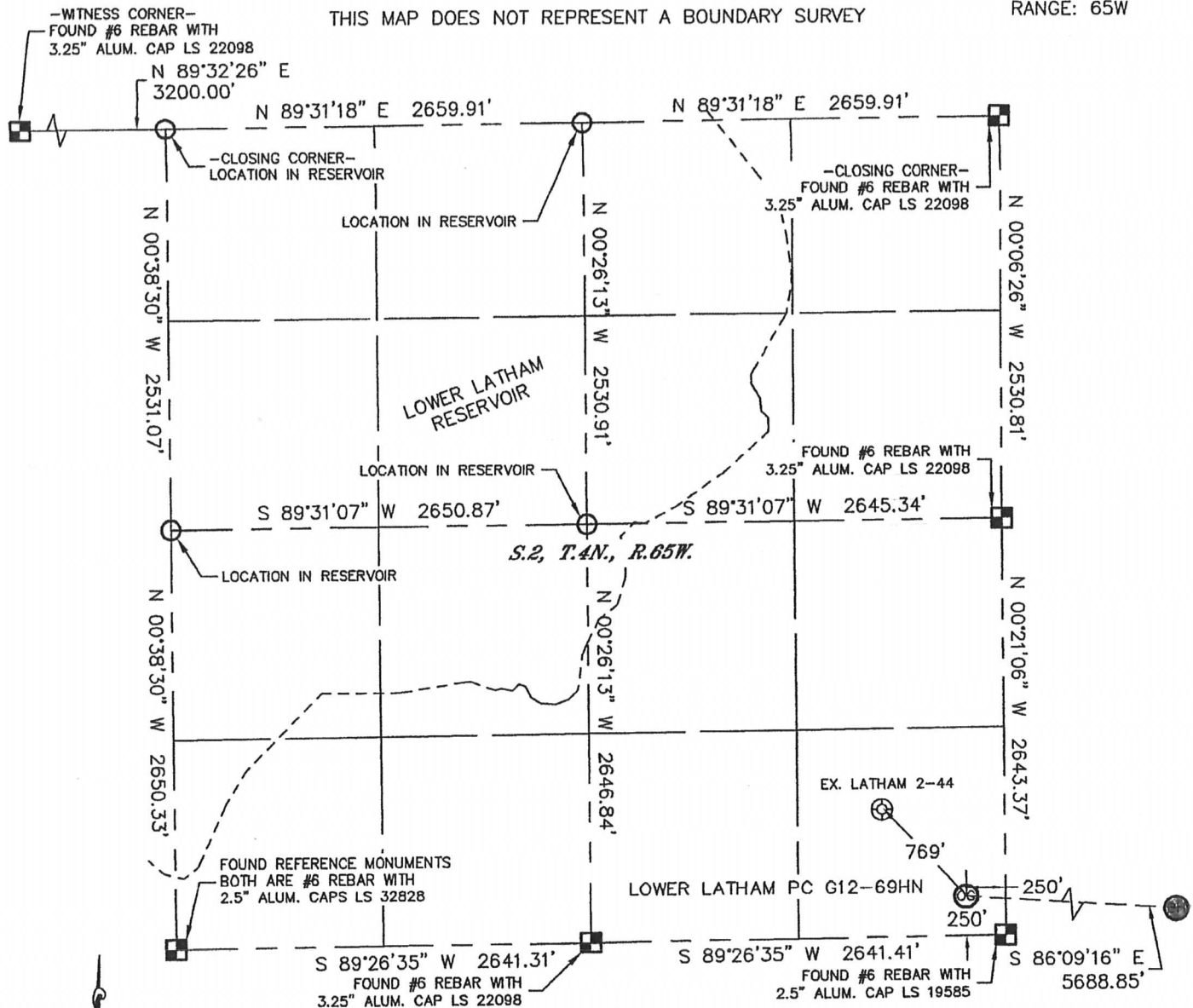


WELL LOCATION CERTIFICATE

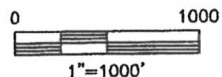
SECTION: 2
TOWNSHIP: 4N
RANGE: 65W

THIS MAP DOES NOT REPRESENT A BOUNDARY SURVEY



In accordance with a request from Brian Derosa with Noble Energy Inc. Lat40°, LLC has determined the surface location of the LOWER LATHAM PC G12-69HN to be 250' from the SOUTH line and 250' from the EAST line as measured at right angles from the section lines of Section 2, Township 4 North, Range 65 West and the bottom hole to be 75' from the NORTH line and 150' from the WEST line as measured at right angles from the section lines of Section 7, Township 4 North, Range 64 West of the Sixth Principal Meridian, County of Weld, State of Colorado.

I hereby state that this Well Location Certificate was prepared by me, or under my direct supervision, that the fieldwork was completed on 12-13-10, for and on behalf of Noble Energy Inc. That this is not a Land Survey Plat or an Improvement Survey Plat, and that it is not to be relied upon for establishment of fence, building, or other future improvement lines.



NOTE:

- 1) Bearings shown are Grid Bearings of the Colorado State Plane Coordinate System, North Zone, North American Datum 1983/2007. The lineal dimensions as contained herein are based upon the "U.S. Survey Foot."
- 2) Ground elevations are based on an observed GPS elevation (NAVD 1988 DATUM).
- 3) NEAREST EXISTING WELL: LATHAM 2-44 769'
- 4) IMPROVEMENTS: See LOCATION DRAWING for all visible improvements within 400' of disturbed area.
- 5) SURFACE USE: RANGELAND
- 6) INSTRUMENT OPERATOR: BRIAN BRINKMAN

SURFACE LOCATION
LATITUDE: 40.33494°N
LONGITUDE: 104.62184°W
PDOP: 2.4
ELEV: 4709
1/4, 1/4: SE1/4SE1/4
NEAREST PROPERTY LINE: 250' SOUTH, 250' EAST

BOTTOM HOLE
LATITUDE: 40.33373°N
LONGITUDE: 104.60150°W

NOTE

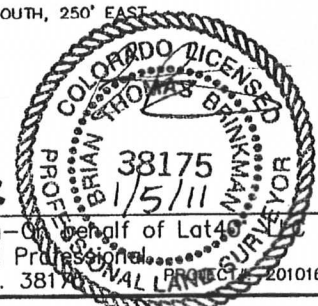
According to Colorado law, you must commence any legal action based upon any defect in this W.L.C. within three years after you discover such defect. In no event, may any action based upon any defect in this survey be commenced more than ten years after the date of the certificate shown hereon. (13-80-105 C.R.S.)

LEGEND

- = ALIQUOT MONUMENT AS DESCRIBED
- = CALCULATED POSITION

SHEET 1 of 3

Brian T. Brinkman—On behalf of Lat40° LLC
Colorado Licensed Professional
Land Surveyor No. 38175
2010169

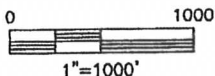
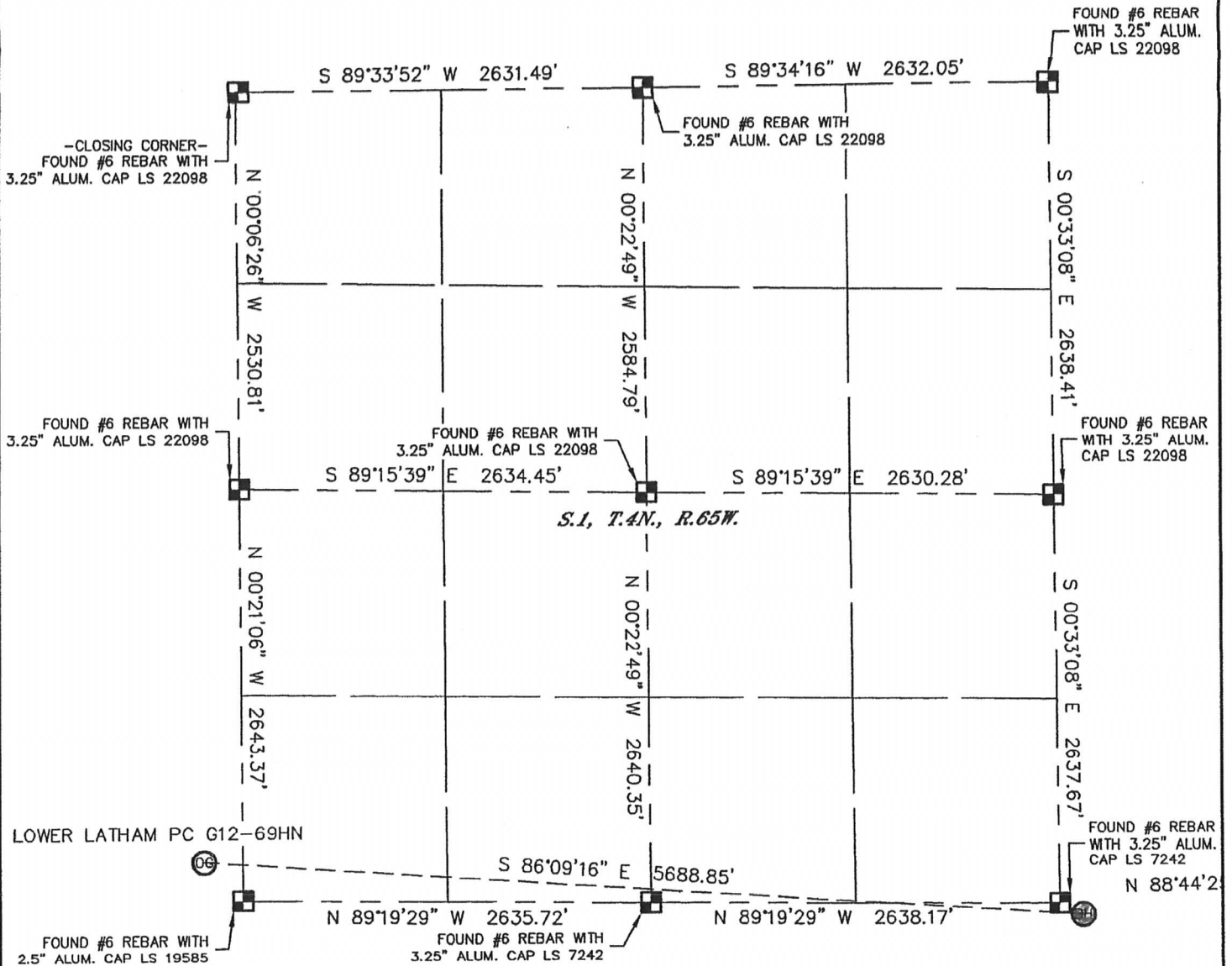


Lat40°, LLC 1635 Foxtrail Drive, Suite 325 Loveland, CO 80538

WELL LOCATION CERTIFICATE



THIS MAP DOES NOT REPRESENT A BOUNDARY SURVEY

SECTION: 2
TOWNSHIP: 4N
RANGE: 65W



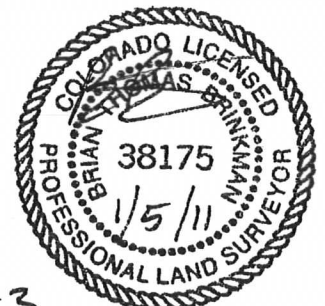
NOTE
According to Colorado law, you must commence any legal action based upon any defect in this W.L.C. within three years after you discover such defect. In no event, may any action based upon any defect in this survey be commenced more than ten years after the date of the certificate shown hereon. (13-80-105 C.R.S.)

LEGEND

-  = ALIQUOT MONUMENT AS DESCRIBED
-  = CALCULATED POSITION

SHEET 2 OF 3

Brian T. Brinkman—On behalf of Lat40°, LLC
Colorado Licensed Professional
Land Surveyor No. 38175 PROJECT#: 2010169

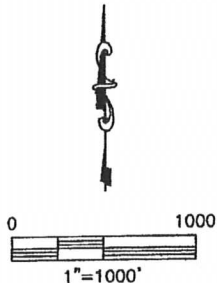
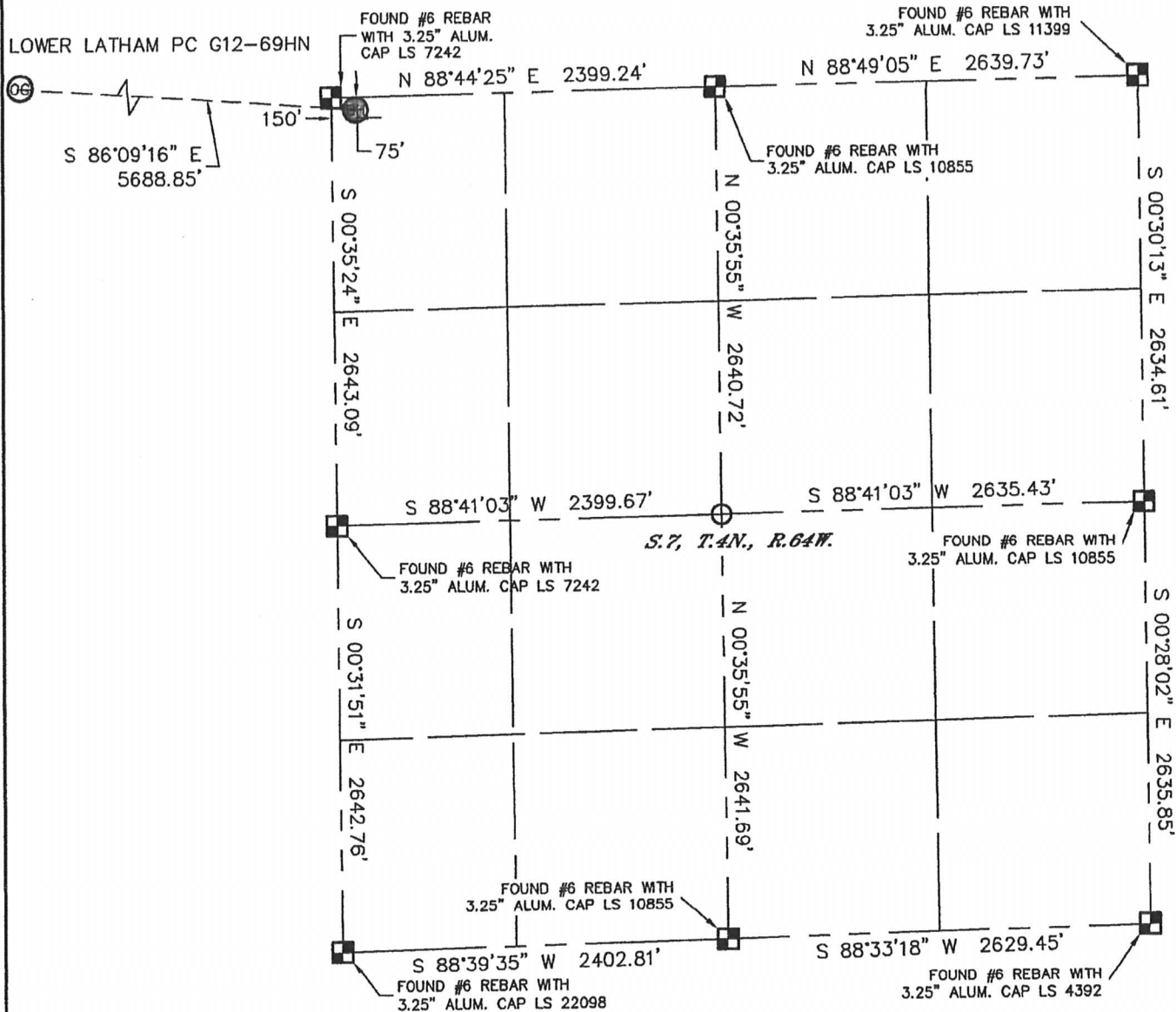


Lat40°, LLC 1635 Foxtrail Drive, Suite 325 Loveland, CO 80538

WELL LOCATION CERTIFICATE

THIS MAP DOES NOT REPRESENT A BOUNDARY SURVEY

SECTION: 2
TOWNSHIP: 4N
RANGE: 65W



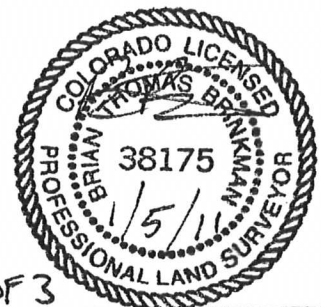
NOTE
According to Colorado law, you must commence any legal action based upon any defect in this W.L.C. within three years after you discover such defect. In no event, may any action based upon any defect in this survey be commenced more than ten years after the date of the certificate shown hereon. (13-80-105 C.R.S.)

LEGEND

- = ALIQUOT MONUMENT AS DESCRIBED
- = CALCULATED POSITION

SHEET 3 of 3

Brian T. Brinkman—On behalf of Lat40°, LLC
Colorado Licensed Professional
Land Surveyor No. 38175 PROJECT#: 2010169



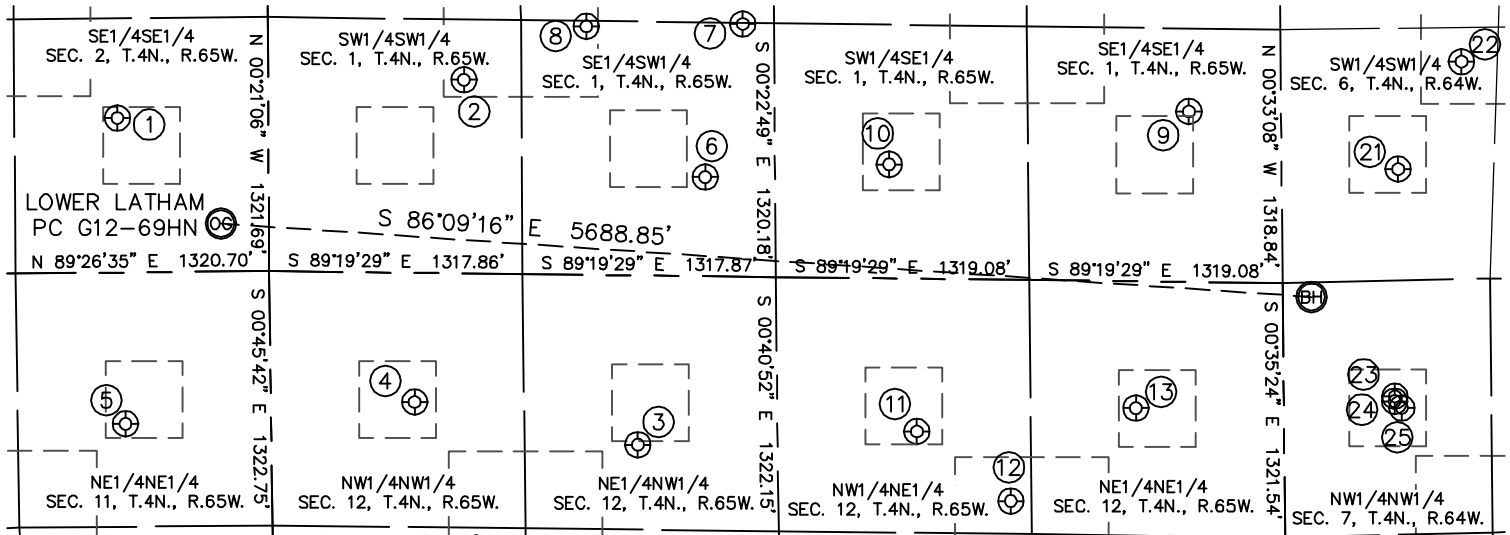
Lat40°, LLC

1635 Foxtrail Drive, Suite 325

Loveland, CO 80538

SITE SKETCH

LOWER LATHAM PC G12-69HN

SECTION: 2
TOWNSHIP: 4N
RANGE: 65W

①

LATHAM 2-44
SE1/4SE1/4
804' FSL
786' FEL
LAT-40.33646°N
LONG-104.62376°W
PDOP: 2.3
ELEV: 4701

②

MUIRHEAD 1-1
SW1/4SW1/4
1007' FSL
1020' FWL
LAT-40.33695°N
LONG-104.61728°W
PDOP: 1.7
ELEV: 4732

③

EASTON 12-315
NE1/4NW1/4
880' FNL
1906' FWL
LAT-40.33172°N
LONG-104.61410°W
PDOP: 3.0
ELEV: 4770

④

EASTON 2
NW1/4NW1/4
671' FNL
748' FWL
LAT-40.33236°N
LONG-104.61826°W
PDOP: 2.9
ELEV: 4755

⑤

HANSCOME 11-7
NE1/4NE1/4
787' FNL
758' FEL
LAT-40.33209°N
LONG-104.62366°W
PDOP: 1.5
ELEV: 4708

⑥

MUIRHEAD 1-34
SE1/4SW1/4
516' FSL
2272' FWL
LAT-40.33553°N
LONG-104.61280°W
PDOP: 3.8
ELEV: 4751

⑦

MUIRHEAD 1-3-23
SE1/4SW1/4
1315' FSL
2472' FWL
LAT-40.33771°N
LONG-104.61207°W
PDOP: 1.5
ELEV: 4765

⑧

MUIRHEAD 1-35
SE1/4SW1/4
1293' FSL
1658' FWL
LAT-40.33770°N
LONG-104.61499°W
PDOP: 4.5
ELEV: 4752

⑨

DINNER 1-44
SE1/4SE1/4
887' FSL
478' FEL
LAT-40.33640°N
LONG-104.60376°W
PDOP: 1.8
ELEV: 4805

⑩

DINNER 1-1
SW1/4SE1/4
593' FSL
2041' FEL
LAT-40.33569°N
LONG-104.60936°W
PDOP: 1.5
ELEV: 4767

⑪

NELSON DARRAH 1-12
NW1/4NE1/4
794' FNL
1911' FEL
LAT-40.33187°N
LONG-104.60889°W
PDOP: 1.7
ELEV: 4765

⑫

NELSON 17-12
NW1/4NE1/4
1150' FNL
1426' FEL
LAT-40.33086°N
LONG-104.60715°W
PDOP: 1.4
ELEV: 4782

⑬

ALLEN 41-12
NE1/4NE1/4
659' FNL
770' FEL
LAT-40.33217°N
LONG-104.60480°W
PDOP: 1.7
ELEV: 4793

⑭

DINNER 6-1
SW1/4SW1/4
579' FSL
607' FWL
LAT-40.33554°N
LONG-104.59986°W
PDOP: 1.8
ELEV: 4830

⑮

DINNER 6-35
SW1/4SW1/4
1131' FSL
943' FWL
LAT-40.33707°N
LONG-104.59866°W
PDOP: 1.8
ELEV: 4843

⑯

WRIGHT-GOIN C07-28D
NW1/4NW1/4
602' FNL
579' FWL
LAT-40.33230°N
LONG-104.59997°W
PDOP: 1.6
ELEV: 4826

⑰

WRIGHT-GOIN C07-31D
NW1/4NW1/4
627' FNL
577' FWL
LAT-40.33223°N
LONG-104.59997°W
PDOP: 2.0
ELEV: 4826

⑱

GEMINI C7-4
NW1/4NW1/4
663' FNL
614' FWL
LAT-40.33213°N
LONG-104.59984°W
PDOP: 2.0
ELEV: 4827

