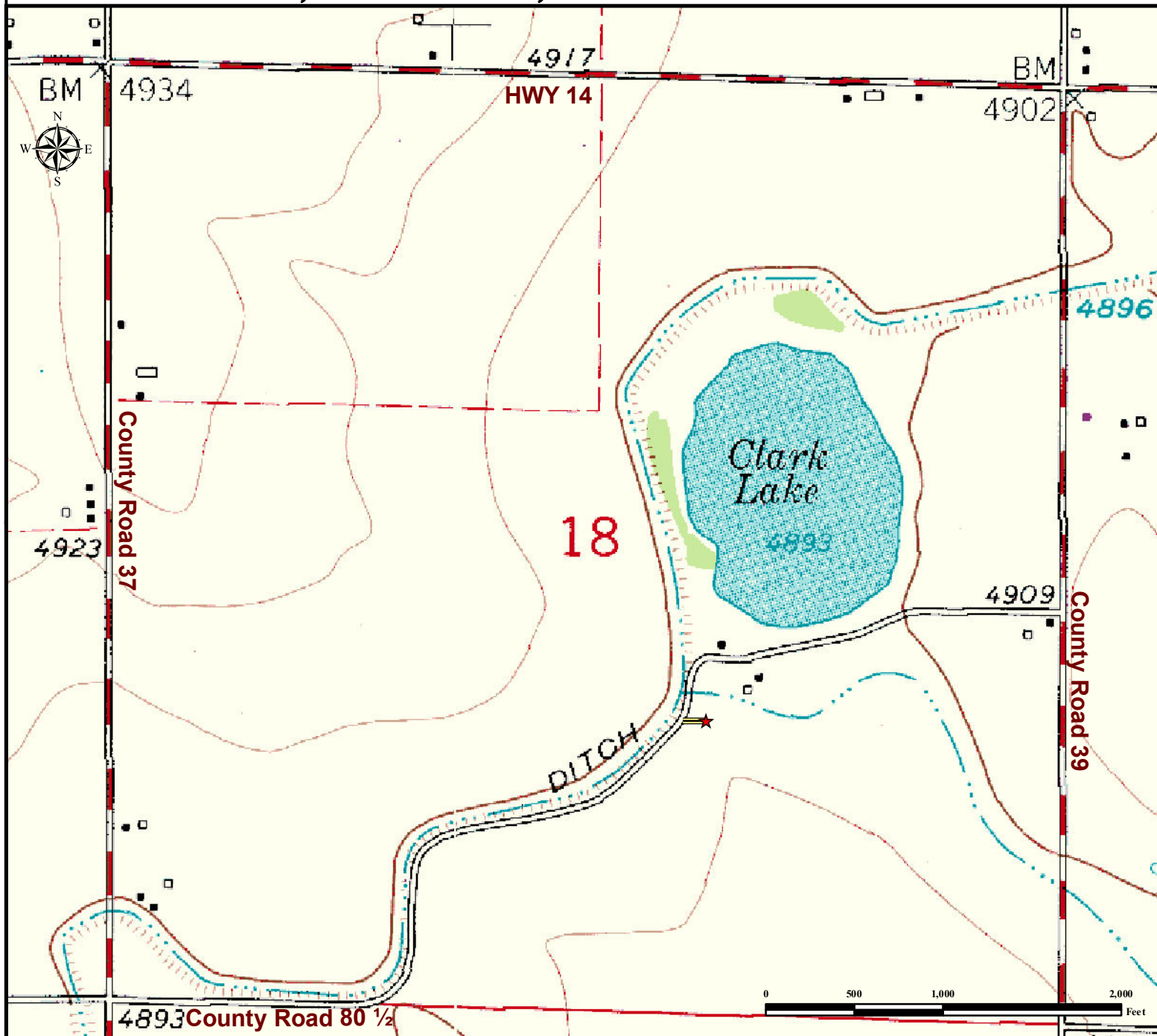


Access Road Map

CALVARY 18-33 FACILITY

NW¼ SE¼ SECTION 18, TOWNSHIP 7 NORTH, RANGE 65 WEST OF THE 6TH PRINCIPAL MERIDIAN



From Ault, CO: from the intersection of US HWY 85 and CO HWY 14 drive East on CO HWY 14 ± 1.9 miles.

Turn Right onto County Road 39 and Drive South ± 0.55 miles to County road 80 1/2.

Turn Right onto County road 80 1/2 and proceed West ± 0.45 miles to facility access road.

Turn Left onto facility access road and proceed East 0.025 miles to proposed facility location.

Total distance from Ault, CO to facility location is **2.925 Miles**.

Legend



Reference Point



Access Road

Reference Location

** Reference Point **

Lat: 40.572522° Long: -104.703795°
(NAD 83)

Elevation: 4896 Feet



Use our resources to find yours!

www.petro-fs.com

(303) 928-7128

Field Date: 03/16/2011
Drafting Date: 03/30/2011
Drafter: DMM
Checked By: BHF

Data Sources:
- Topo courtesy USGS

Prepared for: ORR ENERGY LLC

