

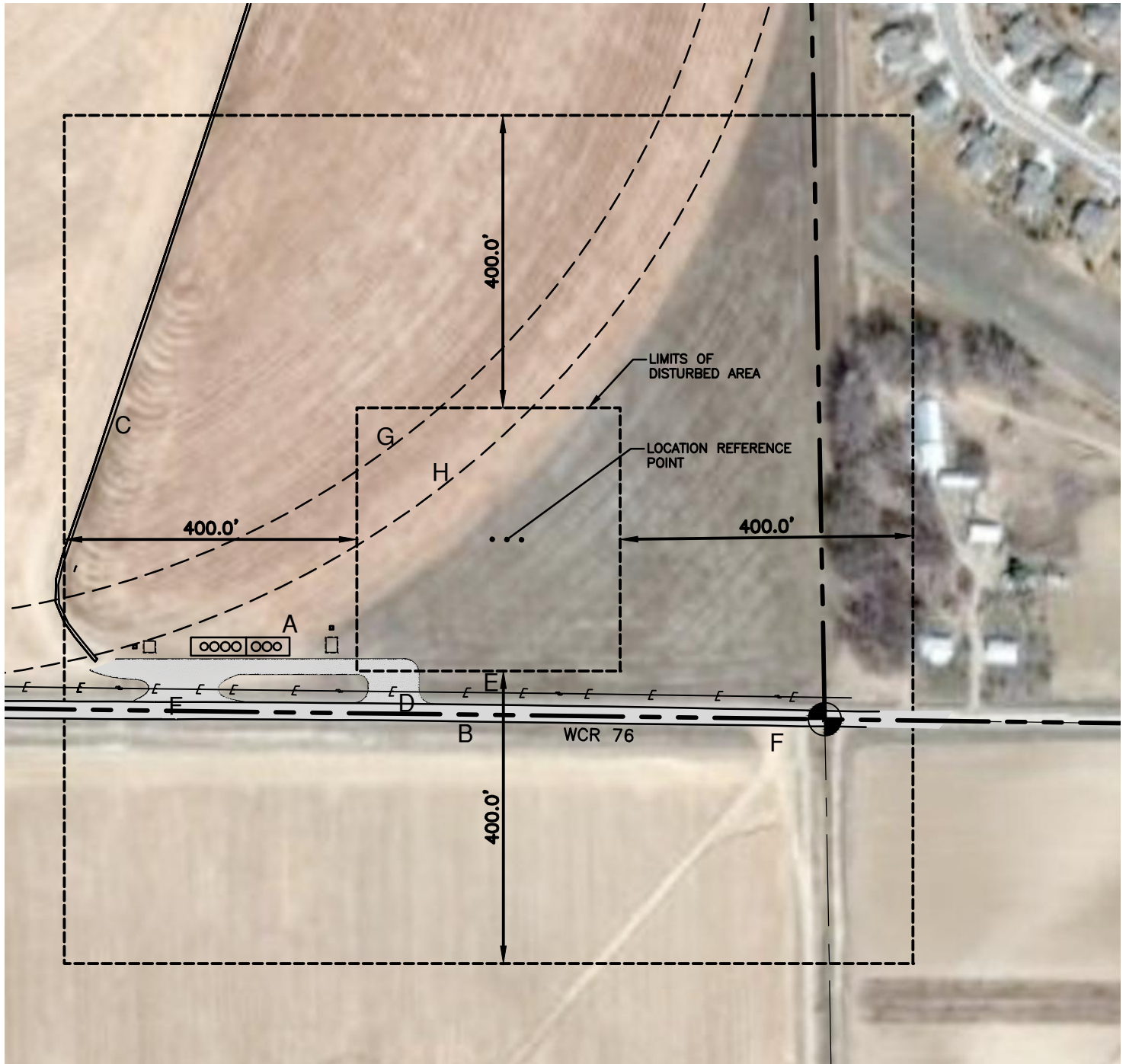
VISIBLE IMPROVEMENTS

ALL DISTANCES AND BEARINGS SHOWN ARE FROM THE LOCATION REFERENCE POINT.

- A. RANCHERS EXPLORATION PARTNERS EXISTING FACILITY (COGCC LOCATION ID 421457) – 320' SW
- B. WCR 76 – 225' S
- C. CONCRETE IRRIGATION DITCH – 557' NW
- D. ACCESS ROAD – 263' SW
- E. ELECTRIC SERVICE LINE – 210' S
- F. ACCESS ROAD – 485' SW
- G. CENTRAL PIVOT WHEEL TRACK – 195' NW
- H. END OF CENTRAL PIVOT ARM – 110' NW
- I. FIELD SERVICE ROAD – 440' SE

LOCATION

SW1/4 SEC 32, T7N, R65W



LAMP RYNEARSON
& ASSOCIATES

4715 Innovation Drive
Fort Collins, CO 80525
www.LRA-Inc.com
970.226.0342 | P
970.226.0879 | F

EATON FIELD #2
LOCATION
DRAWING

drawn by: EKM
designer: EKM
job number-tasks: 0210045.00
date: 1/19/2011
scale: 1" = 200'
file name: