

**MARATHON FRENCH LAKE 3-63-16-1A**  
**LOCATED WITHIN THE NW1/4 NW1/4 SECTION 36 T4N R63W**  
**OF THE 6TH P.M., WELD COUNTY, COLORADO**

**PHOTO "A" TAKEN FROM THE SOUTH LOOKING NORTH**



FRENCH LAKE 3-63-16-1A North.jpg

02/07/2011

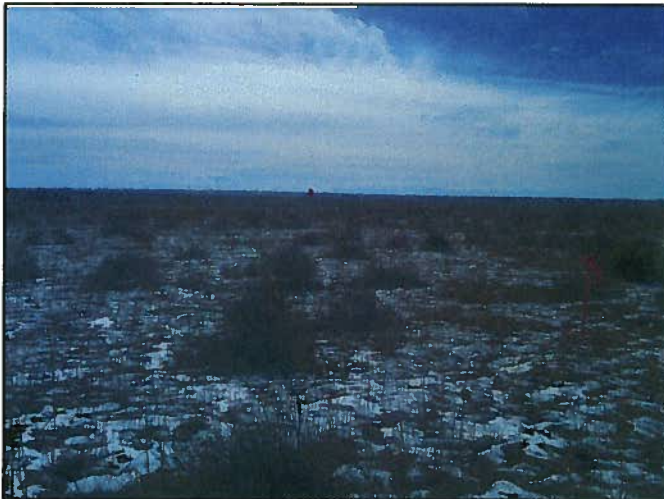
**PHOTO "B" TAKEN FROM THE WEST LOOKING EAST**



FRENCH LAKE 3-63-16-1A East.jpg

02/07/2011

**PHOTO "C" TAKEN FROM THE EAST LOOKING WEST**



FRENCH LAKE 3-63-16-1A West.jpg

02/07/2011

**PHOTO "D" TAKEN FROM THE NORTH LOOKING SOUTH**



FRENCH LAKE 3-63-16-1A South.jpg

02/07/2011

**CONFIDENTIALITY NOTES:**

The information contained in this plat is legally privileged and confidential information intended only for the use of the recipients. If you are not the intended recipients, you are hereby notified that any use, dissemination, distribution or copying of this information is strictly prohibited.



**WILLIAM H. SMITH  
& ASSOCIATES P.C.**

**SURVEYING CONSULTANTS**

250 EAST SECOND NORTH PHONE: 307-875-3638  
 GREEN RIVER, WY 307-875-3639  
[www.williamsmithpc.com](http://www.williamsmithpc.com)

DRAWN BY: CED

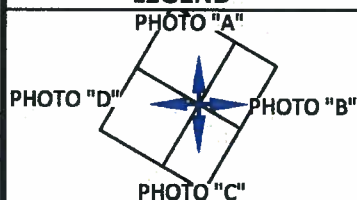
CHECKED BY: WHD

PROJECT NO: 1068161M

JOB NO: 2011001

REVISIONS:

**LEGEND**



**LOCATION:**

FRENCH LAKE 3-63-16-1A  
 WITHIN THE NW/4  
 NW/4 SECTION 36,  
 T 4 N, R 63 W,  
 6TH PM.  
 WELD COUNTY,  
 COLORADO

**MARATHON OIL COMPANY**  
 PO BOX 3128, HOUSTON TX, 77253  
 5555 SAN FELIPE, HOUSTON TX, 77056

**WELL LOCATION PICTURES**

SCALE: N/A

EXHIBIT "B"

DATE: 03/08/2011

SHEET 1 OF 11