



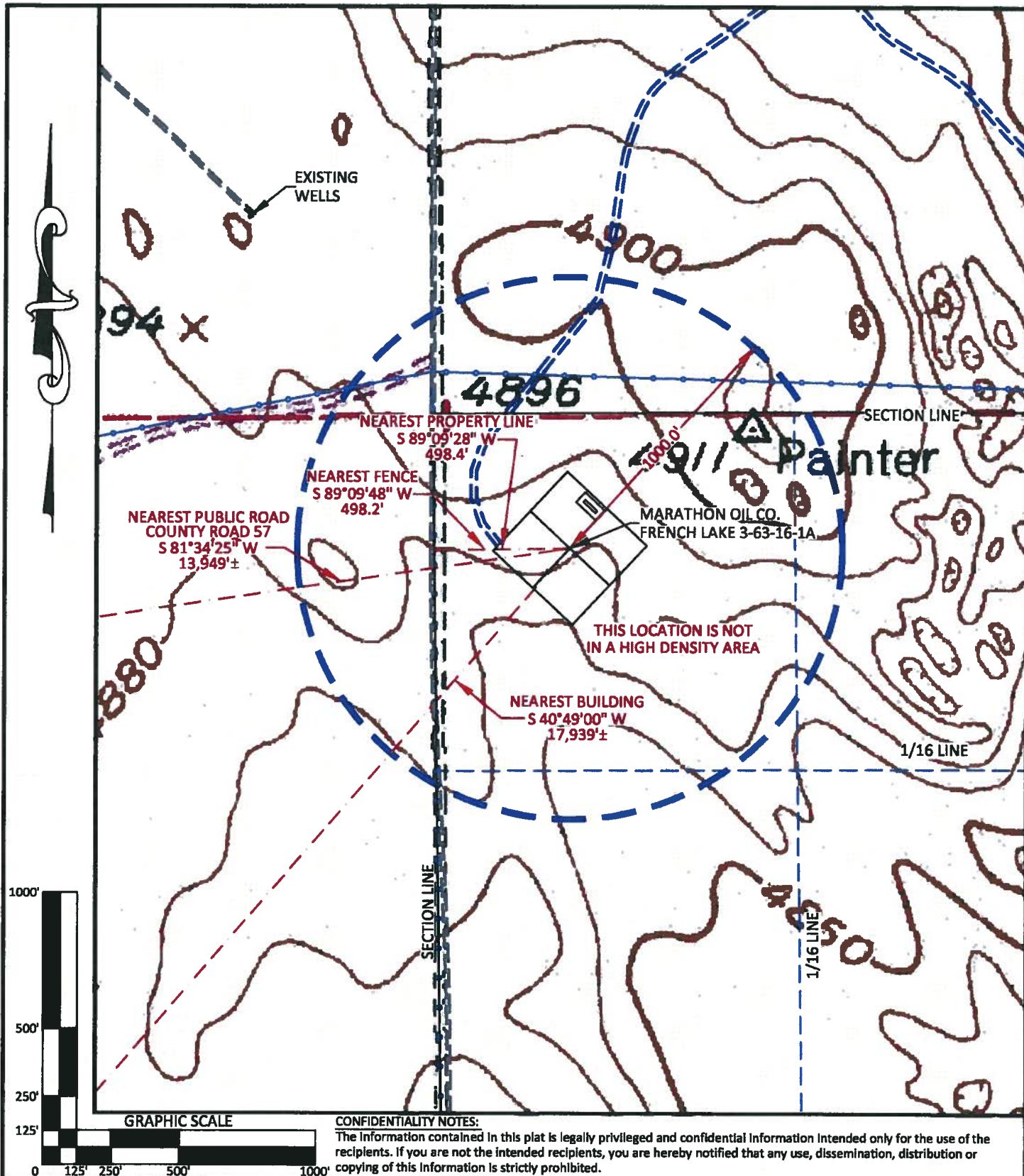
 <p>WILLIAM H. SMITH & ASSOCIATES P.C. SURVEYING CONSULTANTS 30 EAST SECOND NORTH GREEN RIVER, WY PHONE: 307-875-3638 307-875-3639 www.whsmithpc.com</p>	<p>LEGEND</p> <p>400' PERIMETER </p> <p>PROPOSED ACCESS </p> <p>EXISTING 2-TRACK </p> <p>FENCE </p>	<p>LOCATION: FRENCH LAKE 3-63-16-1A WITHIN THE NW/4 NW/4 SECTION 36, T 4 N, R 63 W, 6TH PM. WELD COUNTY, COLORADO</p>	<p>MARATHON OIL COMPANY PO BOX 3128, HOUSTON TX, 77253 5555 SAN FELIPE, HOUSTON TX, 77056</p> <p>LOCATION DRAWING</p> <p>SCALE: 1"=200'</p> <p>DATE: 03/08/2011</p> <p>EXHIBIT "C"</p> <p>SHEET 2 OF 11</p>
<p>DRAWN BY: CED</p> <p>PROJECT NO: 1068161M</p> <p>REVISIONS:</p>	<p>CHECKED BY: WHD</p> <p>JOB NO: 2011001</p>		



**WILLIAM H. SMITH
& ASSOCIATES P.C.**
SURVEYING CONSULTANTS

50 EAST SECOND NORTH PHONE: 307-875-3638
GREEN RIVER, WY 307-875-3639
www.whsmithpc.com

DRAWN BY: CED

CHECKED BY: WHD

PROJECT NO: 1068161M

JOB NO: 2011001

REVISIONS:

LEGEND

1000' RADIUS
PROPOSED ACCESS
EXISTING 2-TRACK

LOCATION:

FRENCH LAKE 3-63-16-1A
WITHIN THE NW/4
NW/4 SECTION 36,
T 4 N, R 63 W,
6TH PM.
WELD COUNTY,
COLORADO

MARATHON OIL COMPANY

PO BOX 3128, HOUSTON TX, 77253
5555 SAN FELIPE, HOUSTON TX, 77056

CULTURE MAP

SCALE: 1"=500'

EXHIBIT "H"

DATE: 03/08/2011

SHEET 7 OF 11