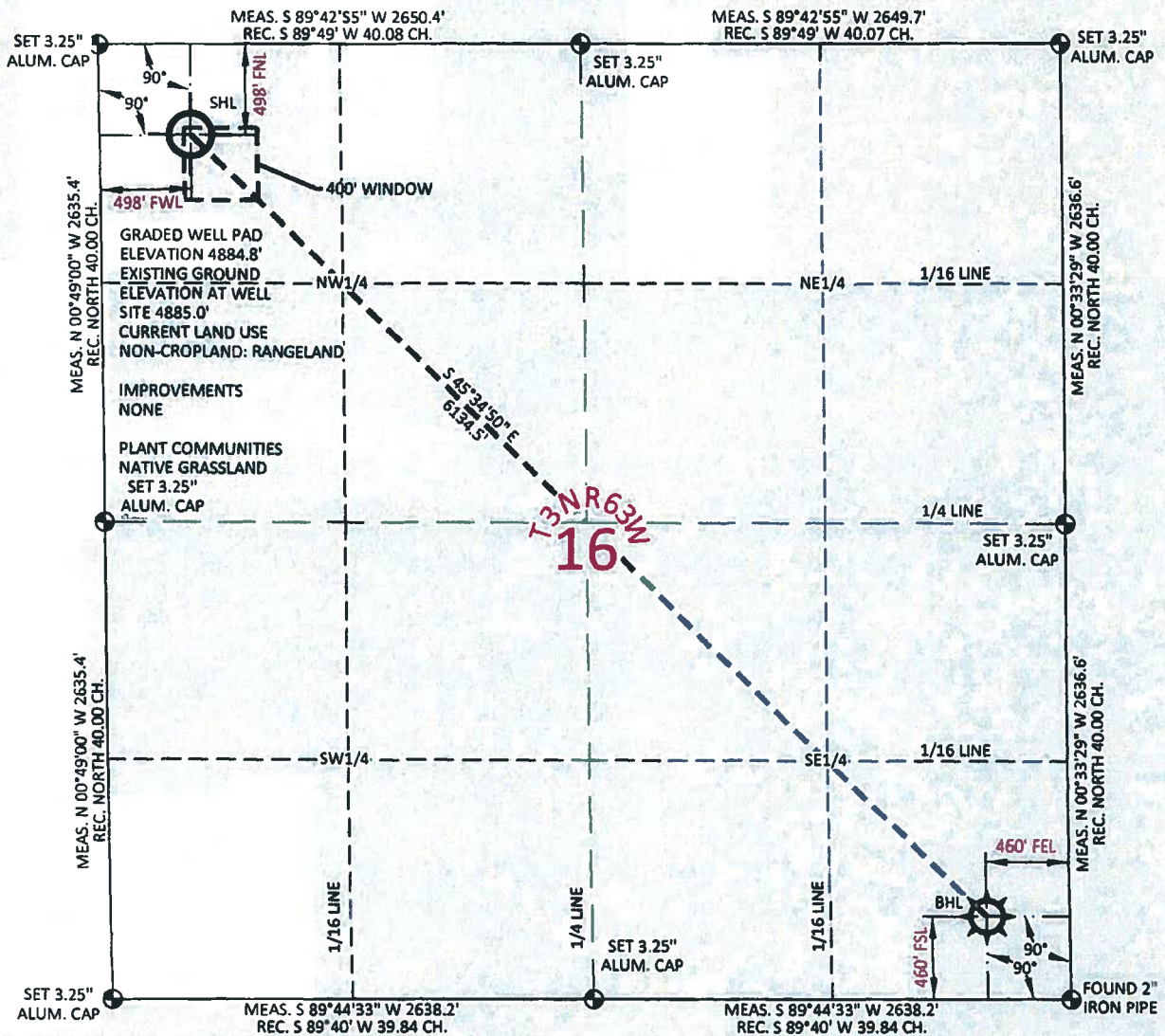


MARATHON FRENCH LAKE 3-63-16-1A
 LOCATED WITHIN THE NW1/4 NW1/4 SECTION 16 T3N R63W
 OF THE 6TH P.M., WELD COUNTY, COLORADO



SURFACE HOLE LOCATION

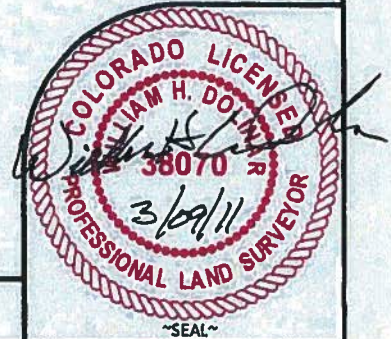
STATE PLANE	COORDINATE	COORDINATE
CO. NORTH	40°23'12.88"	104°45'03.24"
CO. NORTH	40°23'13.07"	104°44'49.812"
CO. NORTH	40°13'52.64"	104°27'01.17"
CO. NORTH	40°13'52.71"	104°26'59.32"
CO. NORTH	1328834.79	3293066.44
CO. NORTH	328837.48	2293216.93

BOTTOM HOLE LOCATION

STATE PLANE	COORDINATE	COORDINATE
CO. NORTH	40°21'33.59"	104°43'48.17"
CO. NORTH	40°21'33.78"	104°43'43.05"
CO. NORTH	40°13'09.69"	104°26'05.34"
CO. NORTH	40°13'09.76"	104°26'03.50"
CO. NORTH	1324541.20	3297447.93
CO. NORTH	324543.95	2297598.45

I, William H. Dollnar, Professional Land Surveyor, CO. RLS # 38070 hereby certify that (in accordance with a request from Anna Walls with Marathon Oil Co, 5555 San Felipe, Houston, TX 77056) I and or personnel under my direction made a survey on the 7th day of February 2011, for the Surface Hole Location and Elevation of Marathon Oil Co. FRENCH LAKE 3-63-16-1A being located within the NW1/4 NW1/4 Section 16, T3N R63W and the Bottom Hole Location being located in the SE1/4 SE1/4 of Section 16, T3N, R63W, both being of the 6th P.M., Weld County, State of Colorado.

- All bearings and distances are GRID, based on the Colorado State Plane Coordinate System, North Zone, North American Datum 1983 from GPS observations occupying a WHS control point (5/8" rebar) and having the Location and Elevation derived from an Opus Solution.
- Vertical Datum used is of NAVD 88.
- Record Bearings and Distances as shown are based on the General Land Office Survey plat approved on the 24th day of November 1868.



CONFIDENTIALITY NOTES:

The Information contained in this plat is legally privileged and confidential information intended only for the use of the recipients. If you are not the intended recipients, you are hereby notified that any use, dissemination, distribution or copying of this information is strictly prohibited.

WILLIAM H. SMITH & ASSOCIATES P.C.
 SURVEYING CONSULTANTS
 350 EAST SECOND NORTH GREEN RIVER, WY
 PHONE: 307-875-3638 307-875-3639
 www.whtsmthpc.com

DRAWN BY: CED **CHECKED BY: WHD**
PROJECT NO: 363161A **JOB NO: 2011001**
REVISIONS:

- LEGEND**
- FOUND CORNER
 - ⊗ CALCULATED CORNER
 - NOTHING FOUND

LOCATION:
 FRENCH LAKE 3-63-16-1A
 WITHIN THE NW1/4
 NW1/4 SECTION 16,
 T 3 N, R 63 W,
 6TH P.M.
 WELD COUNTY,
 COLORADO

MARATHON OIL COMPANY
 PO BOX 3128, HOUSTON TX, 77253
 5555 SAN FELIPE, HOUSTON TX, 77056

WELL LOCATION PLAT

SCALE: 1"=1000' **EXHIBIT "A"**
DATE: 02/19/2011 **SHEET 1 OF 1**