

# XTO ENERGY INC.

## PARGIN #2-36

SURFACE HOLE: 1,235' FSL, 1,130' FEL

BOTTOM HOLE LOCATION: 1,980' FSL, 660' FEL

SECTION 36, T-33-N, R-07-W, N.M.P.M.,

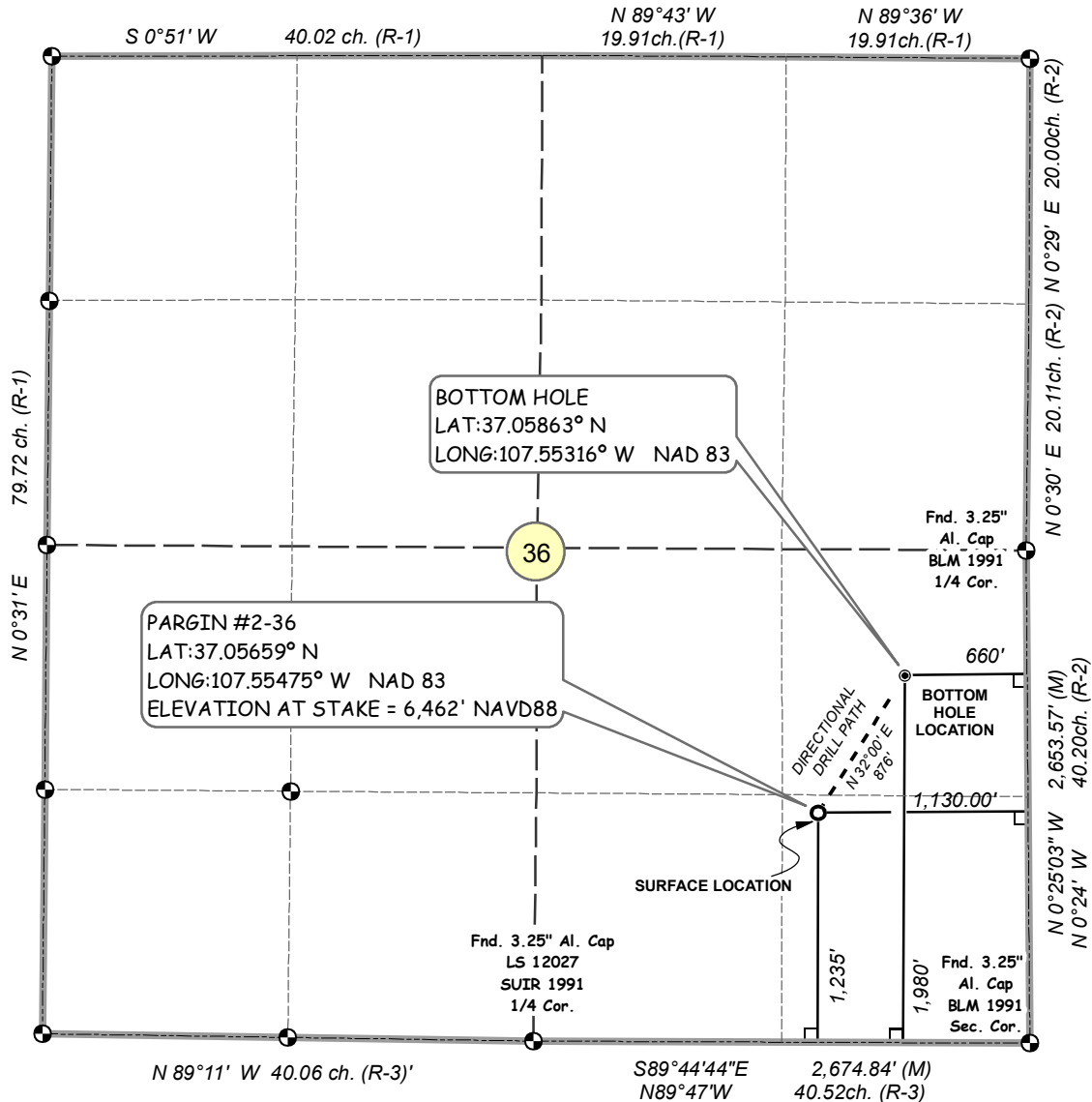
LA PLATA COUNTY, COLORADO

LAT: 37.05659° N LONG: 107.55475° W NAD 83

ELEVATION AT STAKE = 6,462' NAVD88

### Legend

- BOTTOM HOLE
- SURFACE LOCATION
- QUARTER
- SECTION
- SIXTEENTH
- - - DIRECTIONAL\_ALIGNMENT
- 90° TIE



### NOTES:

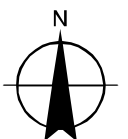
1. SURFACE USE IS EXISTING WELL LOCATION AND AGRICULTURAL.
2. SEE ATTACHED ADDENDUM FOR IMPROVEMENTS, AND PROPERTY LINES WITHIN 400' OF PROPOSED WELL.
3. DATE OF SURVEY 4/27/10
4. BASIS OF ELEVATION = NAVD88 AS PREDICTED BY GEOID03.
5. PDOP OF GPS OBSERVATION OF WELL STAKE = 1.3
6. FOOTAGE DIMENSION FIELD MEASURED AT 90° FROM SECTION LINES
7. (R-1) = Record Survey BLM PLAT AUG. 16, 1995.
8. (R-2) BLM PLAT JAN 4, 1994. (R-3) BLM PLAT JUNE 7, 1994.
9. (M) = FIELD MEASURED.

THIS IS TO CERTIFY THAT THE ABOVE PLAT WAS PREPARED FROM FIELD NOTES OF ACTUAL SURVEYS MADE BY ME OR UNDER MY DIRECT SUPERVISION AND THAT SAME ARE TRUE AND CORRECT TO THE BEST OF MY KNOWLEDGE AND BELIEF

DAVID ALEXANDER JOHNSON LICENSE NO. 33648 DATE  
STATE OF COLORADO



0 500 1,000  
Feet  
1 inch equals 1,000 feet



6-30-10 XEN078 SD.MXD

