

March 25, 2011

Jane Evans Cornelius  
3405 Penrose Place  
Suite 105  
Boulder, CO 80301

RE: Waiver of Rule 318A.a.(1)  
Aristocrat Angus 1-4  
Surface Location – 614' FNL & 1078' FEL  
Aristocrat Angus 8-0-4  
Surface Location – 594' FNL & 1078' FEL  
Aristocrat Angus 8-2-4  
Surface Location – 604' FNL & 1078' FEL  
Township 3 North, Range 65 West  
Section 4: NE/4NE/4  
Weld County, Colorado

Dear Ms. Cornelius:

Encana Oil & Gas (USA) Inc. ("Encana") staked the Aristocrat Angus 1-4 well at a surface location 614 feet from the north line and 1078 feet from the east line of Section 4, Township 3 North, Range 65 West. Encana staked the Aristocrat Angus 8-0-4 well at surface location 594 feet from the north line and 1078 feet from the east line of Section 4, Township 3 North, Range 65 West. Encana staked the Aristocrat Angus 8-2-4 well at surface location 604 feet from the north line and 1078 feet from the east line of Section 4, Township 3 North, Range 65 West. These wells are being drilled under the rules and regulations of the Colorado Oil and Gas Conservation Commission's ("COGCC") Rule 318A known as the Greater Wattenberg Area Special Well Location, Spacing and Unit Designation Rule. This rule states that all boundary infill wells be drilled from the same surface locations as previously designated in Rule 318A.a.(1) which reads:

"In the Greater Wattenberg Area ("GWA"), operators may utilize the following described surface drilling locations (GWA windows") to drill, twin, deepen, or recompleat a well (GWA well") and to commingle any or all of the Cretaceous Age formations.

(1) A square with sides four hundred (400) feet in length, the center of which is the center of any governmental quarter-quarter section ("400' window"); ...

Jane Evans Cornelius

Waiver – Rule 318A.a.(1) Out of Window

Aristocrat Angus 1-4; Aristocrat Angus 8-0-4; Aristocrat Angus 8-2-4

March 25, 2007

Page 2 of 3

The Aristocrat Angus 1-4 well was staked at a location 220 feet west of the defined 400' window. The Aristocrat Angus 0-8-4 well was staked at a location 220 feet west of the defined 400' window. The Aristocrat Angus 8-2-4 well was staked at a location 220 feet west of the defined 400' window. As these locations were staked with your consent and approval, EnCana respectfully requests your consent to an exception location for the Aristocrat Angus 1-4, Aristocrat Angus 8-0-4 and the Aristocrat Angus 8-2-4 Wells by waiver of the COGCC Rule 318A.a (1).

If this meets with your approval, please sign and date both originals of this letter, keeping one for your files and returning one to the undersigned.

Thank you for your time and consideration in this matter. If you have any questions or comments, please call me at (720-876-5140).

Very truly yours,

ENCANA OIL & GAS (USA) INC.



Cindi Danner-Weide, CPL  
Senior Land Negotiator

Jane Evans Cornelius

Waiver – Rule 318A.a.(1) Out of Window

Aristocrat Angus 1-4; Aristocrat Angus 8-0-4; Aristocrat Angus 8-2-4

March 25, 2007

Page 3 of 3

THE UNDERSIGNED SURFACE OWNER HEREBY WAIVES RULE 318A.a.(1) AS IT APPLIES TO THE SURFACE LOCATION OF THE ARISTOCRAT ANGUS 1-4 WELL AND APPROVES THE SURFACE LOCATION OF 1078' FROM THE EAST LINE AND 614' FROM THE NORTH LINE OF SECTION 4, TOWNSHIP 3 NORTH, RANGE 65 WEST, WELD COUNTY, COLORADO.

THE UNDERSIGNED SURFACE OWNER HEREBY WAIVES RULE 318A.a.(1) AS IT APPLIES TO THE SURFACE LOCATION OF THE ARISTOCRAT ANGUS 8-0-4 WELL AND APPROVES THE SURFACE LOCATION OF 1078' FROM THE EAST LINE AND 594' FROM THE NORTH LINE OF SECTION 4, TOWNSHIP 3 NORTH, RANGE 65 WEST, WELD COUNTY, COLORADO.

THE UNDERSIGNED SURFACE OWNER HEREBY WAIVES RULE 318A.a.(1) AS IT APPLIES TO THE SURFACE LOCATION OF THE ARISTOCRAT ANGUS 1-4 WELL AND APPROVES THE SURFACE LOCATION OF 1078' FROM THE EAST LINE AND 604' FROM THE NORTH LINE OF SECTION 4, TOWNSHIP 3 NORTH, RANGE 65 WEST, WELD COUNTY, COLORADO.

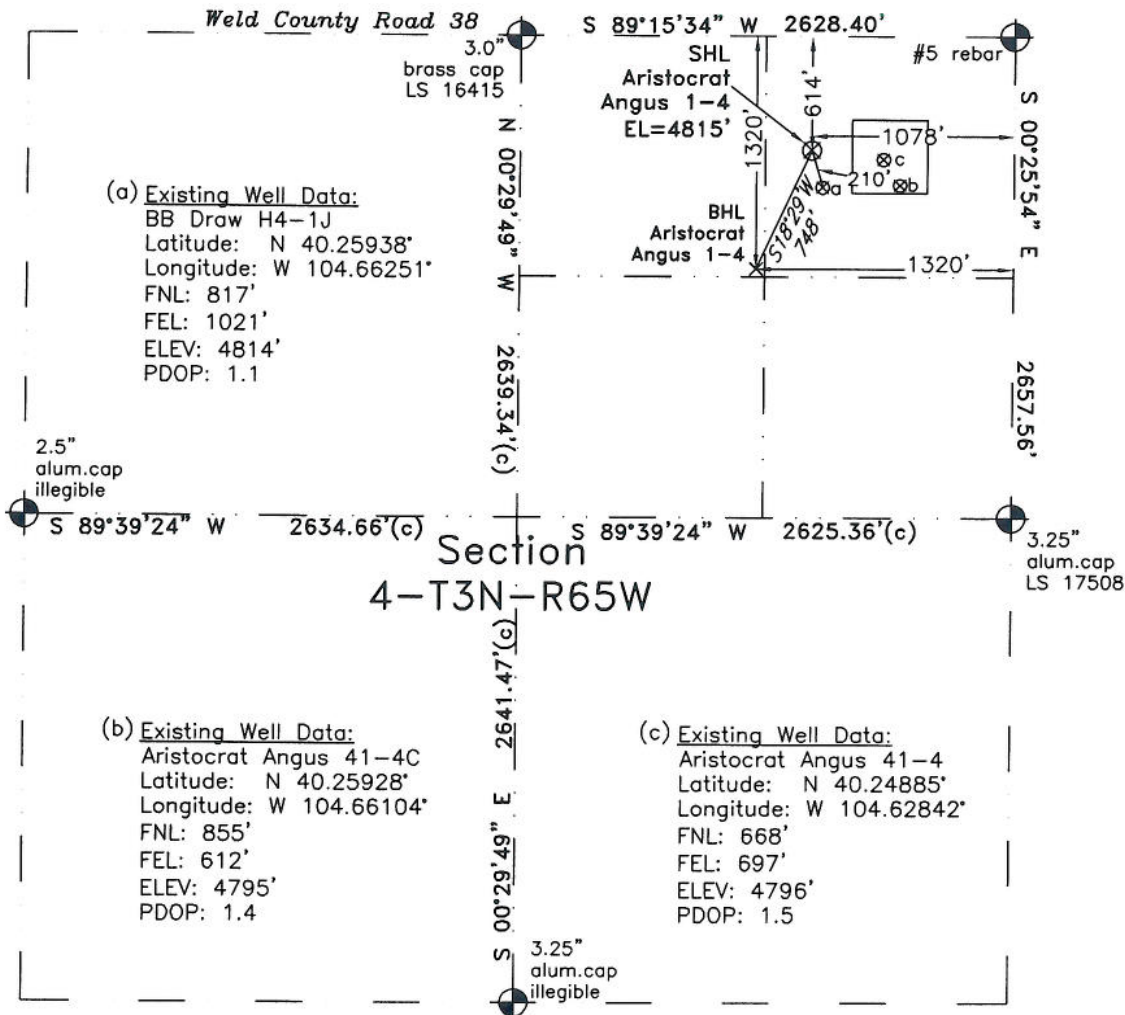
by

  
JANE EVANS CORNELIUS



# WELL LOCATION CERTIFICATE

THIS MAP DOES NOT  
REPRESENT A BOUNDARY SURVEY



In accordance with a request from Dave Bale of EnCana Oil & Gas (USA) Inc., PLS Group, LLC has determined the location of the Aristocrat Angus 1-4 well site to be SHL: 614' FNL and 1078' FEL, (BHL 1320' FNL and 1320' FEL) as measured at ninety (90) degrees from the section lines of Section 4, Township 3 North, Range 65 West, 6th Principal Meridian, County of Weld, CO.

## Proposed Surface Hole Data:

Latitude: N 40.25994° BHL(40.25800°)  
Longitude: W 104.66271° BHL(104.66358°)  
PDOP: 1.4

Nearest: Building 1920' southeast Above Ground Utility 280' northeast  
Public Road 607' north Railroad 29,085' northwest  
Property Line 236' west Well Window: SHL is 220' outside  
Existing Well: BB Draw H4-1J 210' southeast

## Notes:

- 1) Bearings and distances based on NAD 83 Colorado North State Plane Coordinates using RTK GPS observations taken 3/23/11 by operator Craig Burke.
- 2) Conversion factor to ground (1.000274972).
- 3) Elevations based on NAVD 88 GPS heights and Geoid 2003 corrections.
- 4) See improvement map for visible improvements within 400 feet.
- 5) The surface use is agricultural field.

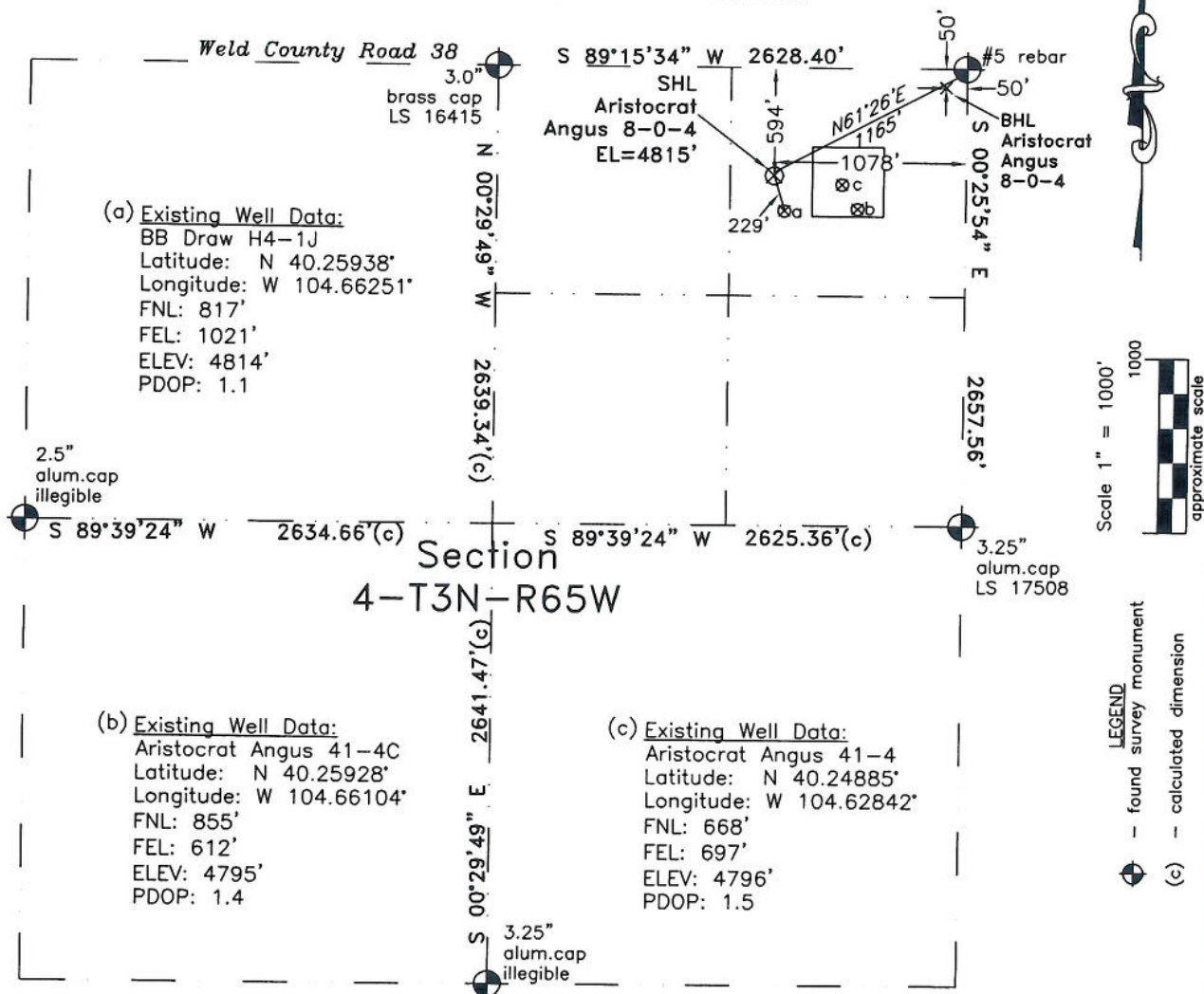
I hereby certify that this Well Location Certificate was prepared by me or under my direct supervision on 3/25/11 for and on behalf of EnCana Oil & Gas (USA) Inc. That it is not a Land Survey Plat or an Improvement Survey Plat and that it is not to be relied upon for establishment of fences, buildings, or other future improvement lines.

John Robert McGehee LS#38219  
Well: Aristocrat Angus 1-4 WLC

**NOTICE:** According to Colorado law you must commence any legal action based upon any defect in this W.L.C. within three years after you first discover such defect. In no event may any action based upon any defect in this W.L.C. be commenced more than ten years from this said date of the certification shown hereon.

# WELL LOCATION CERTIFICATE

THIS MAP DOES NOT  
REPRESENT A BOUNDARY SURVEY



In accordance with a request from Dave Bale of EnCana Oil & Gas (USA) Inc., PLS Group, LLC has determined the location of the Aristocrat Angus 8-0-4 well site to be SHL: 594' FNL and 1078' FEL, (BHL 50' FNL and 50' FEL) as measured at ninety (90) degrees from the section lines of Section 4, Township 3 North, Range 65 West, 6th Principal Meridian, County of Weld, CO.

## Proposed Surface Hole Data:

Latitude: N 40.25999° BHL(40.26150°)  
Longitude: W 104.66271° BHL(104.65902°)  
PDOP: 1.4

Nearest: Building 1922' southeast Above Ground Utility 272' northeast  
Public Road 587' north Railroad 29,071' northwest  
Property Line 236' west Well Window: SHL is 220' outside  
Existing Well: BB Draw H4-1J 229' southeast

## Notes:

- 1) Bearings and distances based on NAD 83 Colorado North State Plane Coordinates using RTK GPS observations taken 3/23/11 by operator Craig Burke.
- 2) Conversion factor to ground (1.000274972).
- 3) Elevations based on NAVD 88 GPS heights and Geoid 2003 corrections.
- 4) See improvement map for visible improvements within 400 feet.
- 5) The surface use is agricultural field.

**NOTICE:** According to Colorado law you must commence any legal action based upon any defect in this W.L.C. within three years after you first discover such defect. In no event may any action based upon any defect in this W.L.C. be commenced more than ten years from this said date of the certification shown hereon.

I hereby certify that this Well Location Certificate was prepared by me or under my direct supervision on 3/25/11 for and on behalf of EnCana Oil & Gas (USA) Inc. That it is not a Land Survey Plat or an Improvement Survey Plat and that it is not to be relied upon for establishment of fences, buildings, or other future improvement lines.

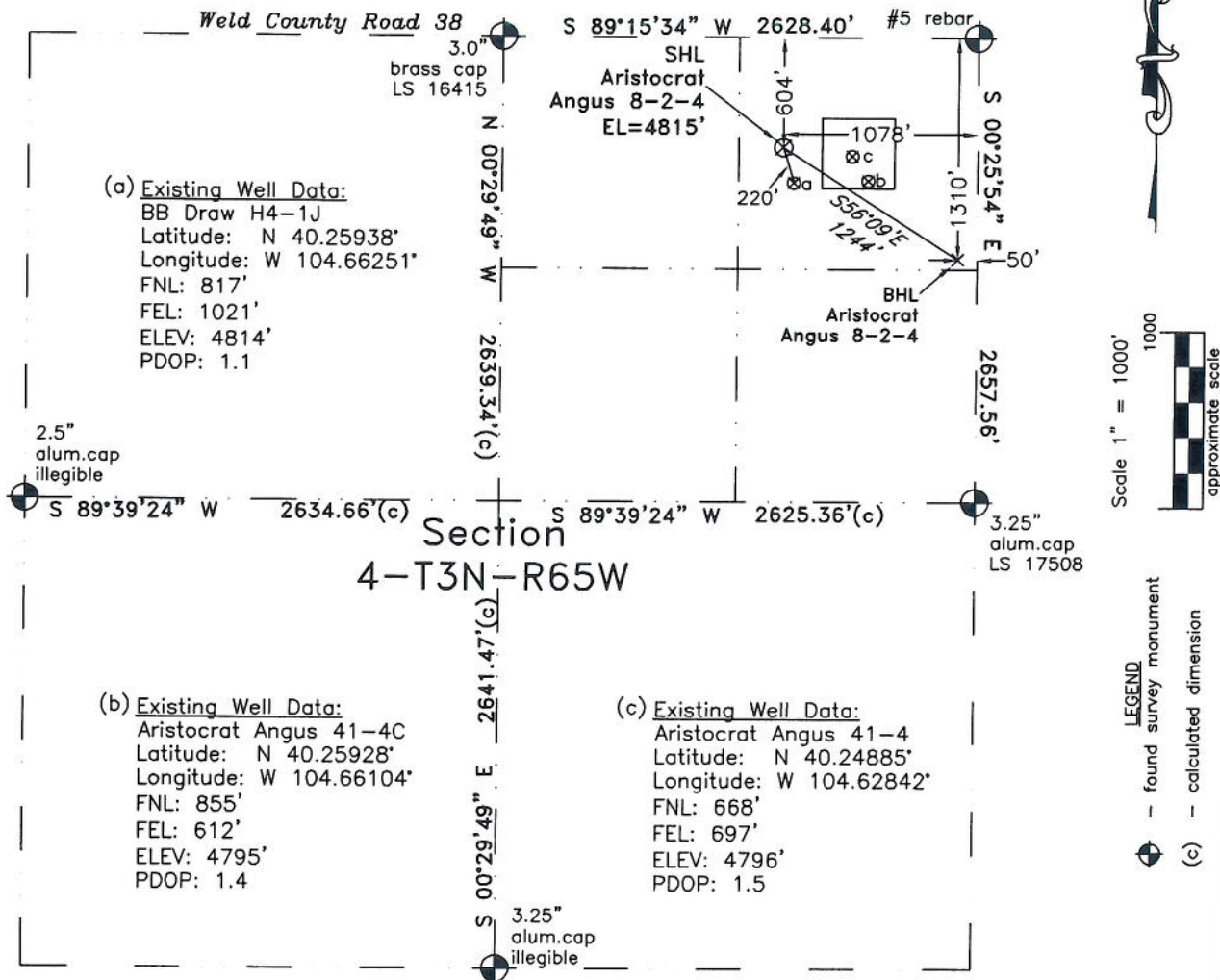
John Robert McGehee LS#38219  
Well: Aristocrat Angus 8-0-4 WLC



PLS Group, LLC  
109 Coronado Ct. - Bldg. 7  
Fort Collins, Colorado 80525

# WELL LOCATION CERTIFICATE

THIS MAP DOES NOT  
REPRESENT A BOUNDARY SURVEY



In accordance with a request from Dave Bale of EnCana Oil & Gas (USA) Inc., PLS Group, LLC has determined the location of the **Aristocrat Angus 8-2-4** well site to be SHL: 604' FNL and 1078' FEL, (BHL 1310' FNL and 50' FEL) as measured at ninety (90) degrees from the section lines of Section 4, Township 3 North, Range 65 West, 6th Principal Meridian, County of Weld, CO.

## Proposed Surface Hole Data:

Latitude: N 40.25997° BHL(40.25804°)  
Longitude: W 104.66271° BHL(104.65903°)  
PDOP: 2.0

Nearest: Building 1921' southeast	Above Ground Utility 276' northeast
Public Road 597' north	Railroad 29,078' northwest
Property Line 236' west	Well Window: SHL is 220' outside
Existing Well: BB Draw H4-1J 220' southeast	

## Notes:

- 1) Bearings and distances based on NAD 83 Colorado North State Plane Coordinates using RTK GPS observations taken 3/23/11 by operator Craig Burke.
- 2) Conversion factor to ground (1.000274972).
- 3) Elevations based on NAVD 88 GPS heights and Geoid 2003 corrections.
- 4) See improvement map for visible improvements within 400 feet.
- 5) The surface use is agricultural field.

**NOTICE:** According to Colorado law you must commence any legal action based upon any defect in this W.L.C. within three years after you first discover such defect. In no event may any action based upon any defect in this W.L.C. be commenced more than ten years from this said date of the certification shown hereon.

I hereby certify that this Well Location Certificate was prepared by me or under my direct supervision on 3/25/11 for and on behalf of EnCana Oil & Gas (USA) Inc. That it is not a Land Survey Plat or an Improvement Survey Plat and that it is not to be relied upon for establishment of fences, buildings, or other future improvement lines.

John Robert McGehee LS#38219  
Well: Aristocrat Angus 8-2-4 WLC