

UINTAH ENGINEERING & LAND SURVEYING
85 So. 200 East * Vernal, Utah 84078 * (435) 789-1017

EOG RESOURCES, INC.

CONSTRUCTION LAYOUT FOR

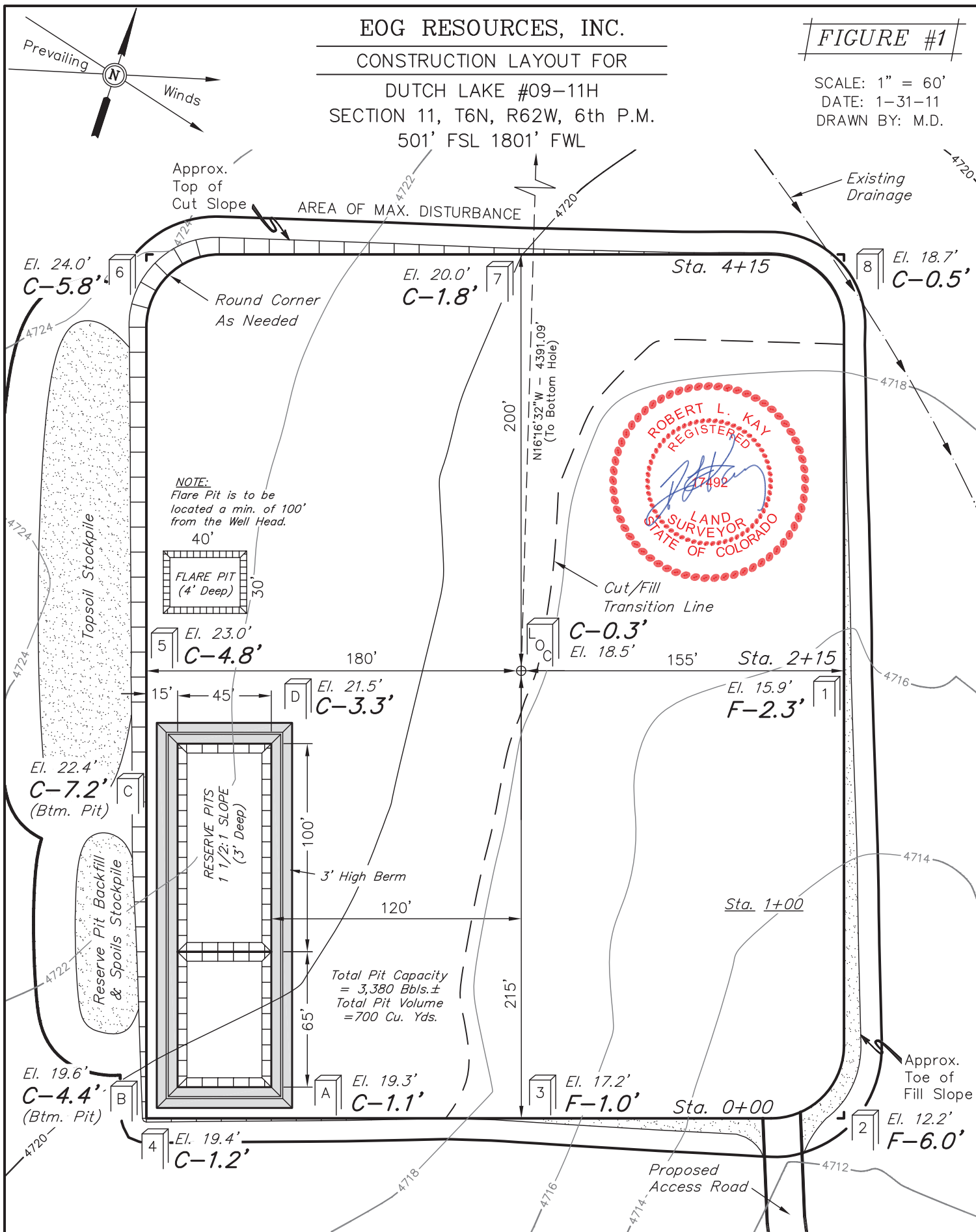
DUTCH LAKE #09-11H
SECTION 11, T6N, R62W, 6th P.M.
501' FSL 1801' FWL

FIGURE #1

SCALE: 1" = 60'

DATE: 1-31-11

DRAWN BY: M.D.



Elev. Ungraded Ground At Loc. Stake = 4718.5'
FINISHED GRADE ELEV. AT LOC. STAKE = 4718.2'

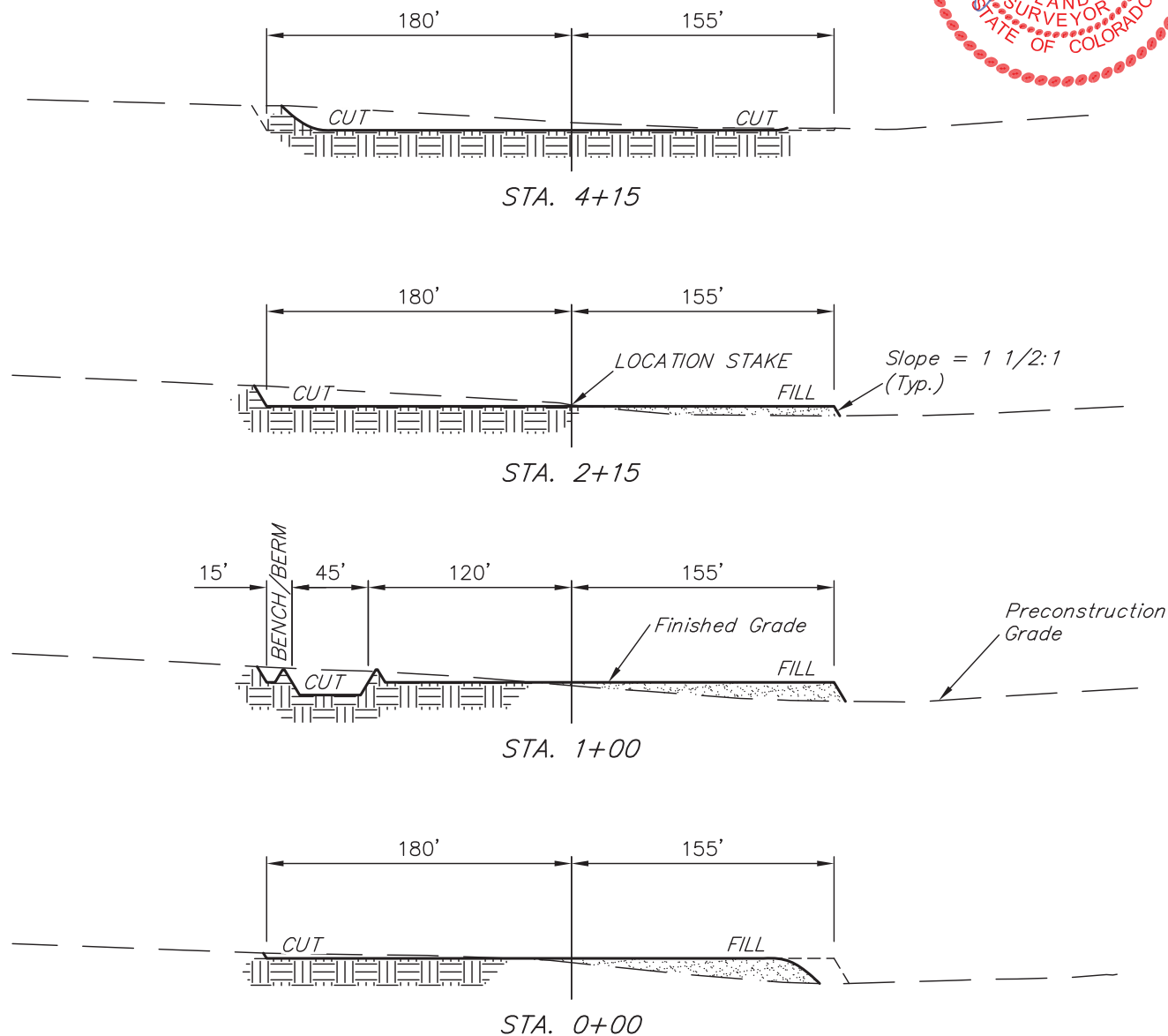
UINTAH ENGINEERING & LAND SURVEYING
85 So. 200 East * Vernal, Utah 84078 * (435) 789-1017

1" = 40'
X-Section
Scale
1" = 100'

DATE: 1-31-11
DRAWN BY: M.D.

EOG RESOURCES, INC.
CONSTRUCTION LAYOUT CROSS SECTION FOR
DUTCH LAKE #09-11H
SECTION 11, T6N, R62W, 6th P.M.
501' FSL 1801' FWL

FIGURE #2



NOTE:

Topsoil should not be Stripped Below Finished Grade on Substructure Area.

APPROXIMATE ACREAGES
WELL SITE DISTURBANCE = ± 4.077 ACRES
ACCESS ROAD DISTURBANCE = ± 2.294 ACRES
TOTAL = ± 6.371 ACRES

* NOTE:
FILL QUANTITY INCLUDES 5% FOR COMPACTION

APPROXIMATE YARDAGES

(6") Topsoil Stripping = 2,730 Cu. Yds.
Remaining Location = 6,300 Cu. Yds.
TOTAL CUT = 9,030 CU.YDS.
FILL = 5,950 CU.YDS.

EXCESS MATERIAL = 3,080 Cu. Yds.
Topsoil & Pit Backfill = 3,080 Cu. Yds.
(1/2 Pit Vol.)
EXCESS UNBALANCE = 0 Cu. Yds.
(After Interim Rehabilitation)

UINTAH ENGINEERING & LAND SURVEYING
85 So. 200 East * Vernal, Utah 84078 * (435) 789-1017

EOG RESOURCES, INC.

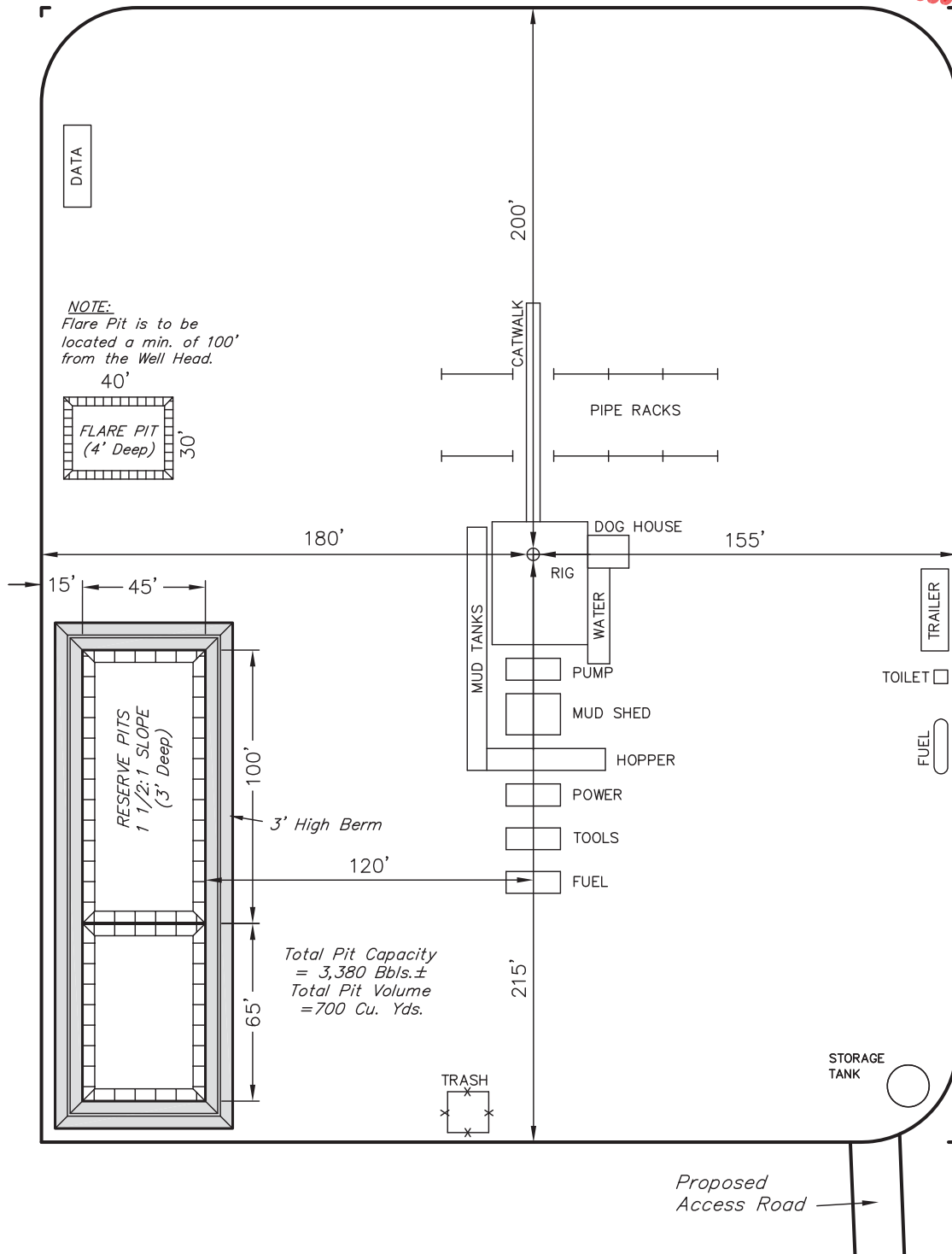
TYPICAL RIG LAYOUT FOR

DUTCH LAKE #09-11H
SECTION 11, T6N, R62W, 6th P.M.
501' FSL 1801' FWL

FIGURE #3



SCALE: 1" = 60'
DATE: 1-31-11
DRAWN BY: M.D.

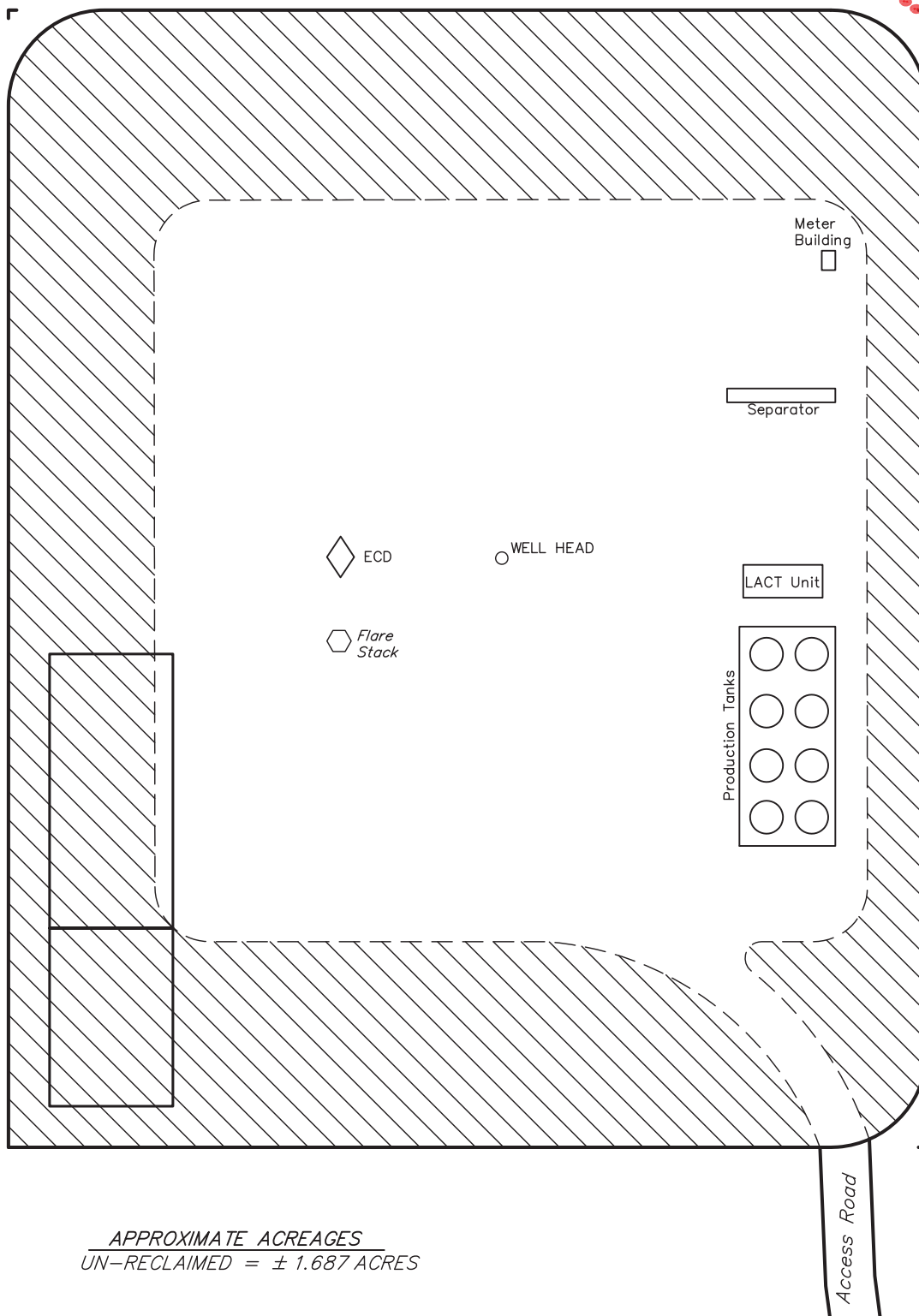




SCALE: 1" = 60'
DATE: 1-31-11
DRAWN BY: M.D.

EOG RESOURCES, INC.
RECLAMATION DIAGRAM FOR
DUTCH LAKE #09-11H
SECTION 11, T6N, R62W, 6th P.M.
501' FSL 1801' FWL

FIGURE #4



APPROXIMATE ACREAGES
UN-RECLAIMED = ± 1.687 ACRES



RECLAIMED AREA

UINTAH ENGINEERING & LAND SURVEYING
85 So. 200 East * Vernal, Utah 84078 * (435) 789-1017

EOG RESOURCES, INC.

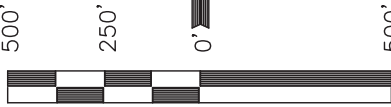
LOCATION DRAWING FOR

DUTCH LAKE #09-11H
SECTION 11, T6N, R62W, 6th P.M.
501' FSL 1801' FWL

FIGURE #5

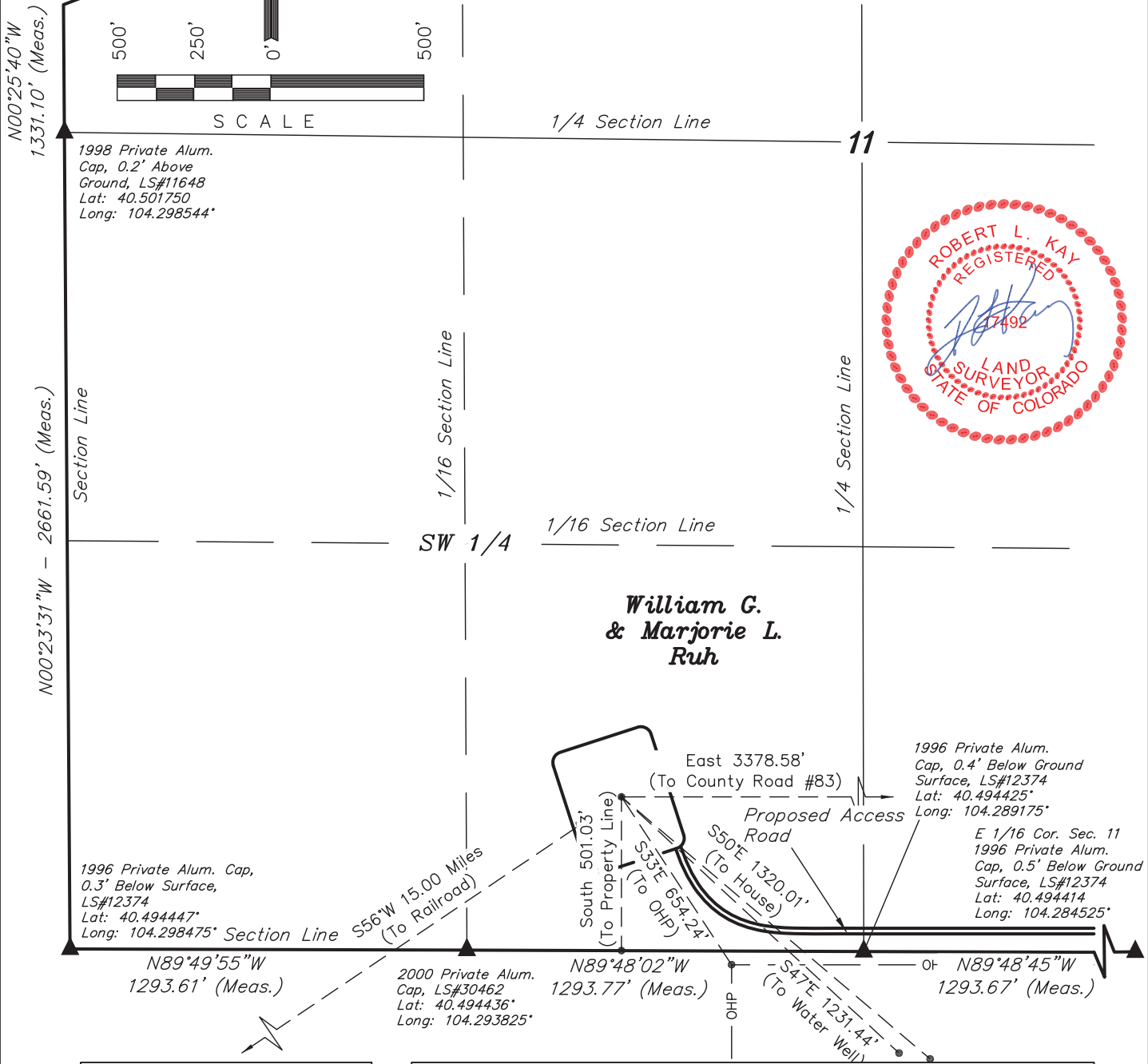
DATE: 1-31-11
DRAWN BY: M.D.

N 1/16 Cor. Sec. 11
1998 Private Alum. Cap,
LS#11648
Lat: 40.505403°
Long: 104.298583°



SCALE

1998 Private Alum.
Cap, 0.2' Above
Ground, LS#11648
Lat: 40.501750
Long: 104.298544°



PLANT COMMUNITY

- ☐ DISTURBED GRASSLAND
- ☐ NATIVE GRASSLAND
- ☐ SHRUB LAND
- ☐ PLAINS RIPARIAN
- ☐ MOUNTAIN RIPARIAN
- ☐ FOREST LAND
- ☐ WETLANDS AQUATIC
- ☐ ALPINE
- ☐ OTHER (Describe): _____

CURRENT LAND USE

- CROP LAND: ☐ IRRIGATED ☐ DRY LAND ☐ IMPROVED PASTURE ☐ HAY MEADOW ☐ CRP
- NON-CROP LAND: ☐ RANGELAND ☐ TIMBER ☐ RECREATIONAL ☐ OTHER (Describe) _____
- SUBDIVIDED: ☐ INDUSTRIAL ☐ COMMERCIAL ☐ RESIDENTIAL _____

FUTURE LAND USE

- CROP LAND: ☐ IRRIGATED ☐ DRY LAND ☐ IMPROVED PASTURE ☐ HAY MEADOW ☐ CRP
- NON-CROP LAND: ☐ RANGELAND ☐ TIMBER ☐ RECREATIONAL ☐ OTHER (Describe) _____
- SUBDIVIDED: ☐ INDUSTRIAL ☐ COMMERCIAL ☐ RESIDENTIAL _____