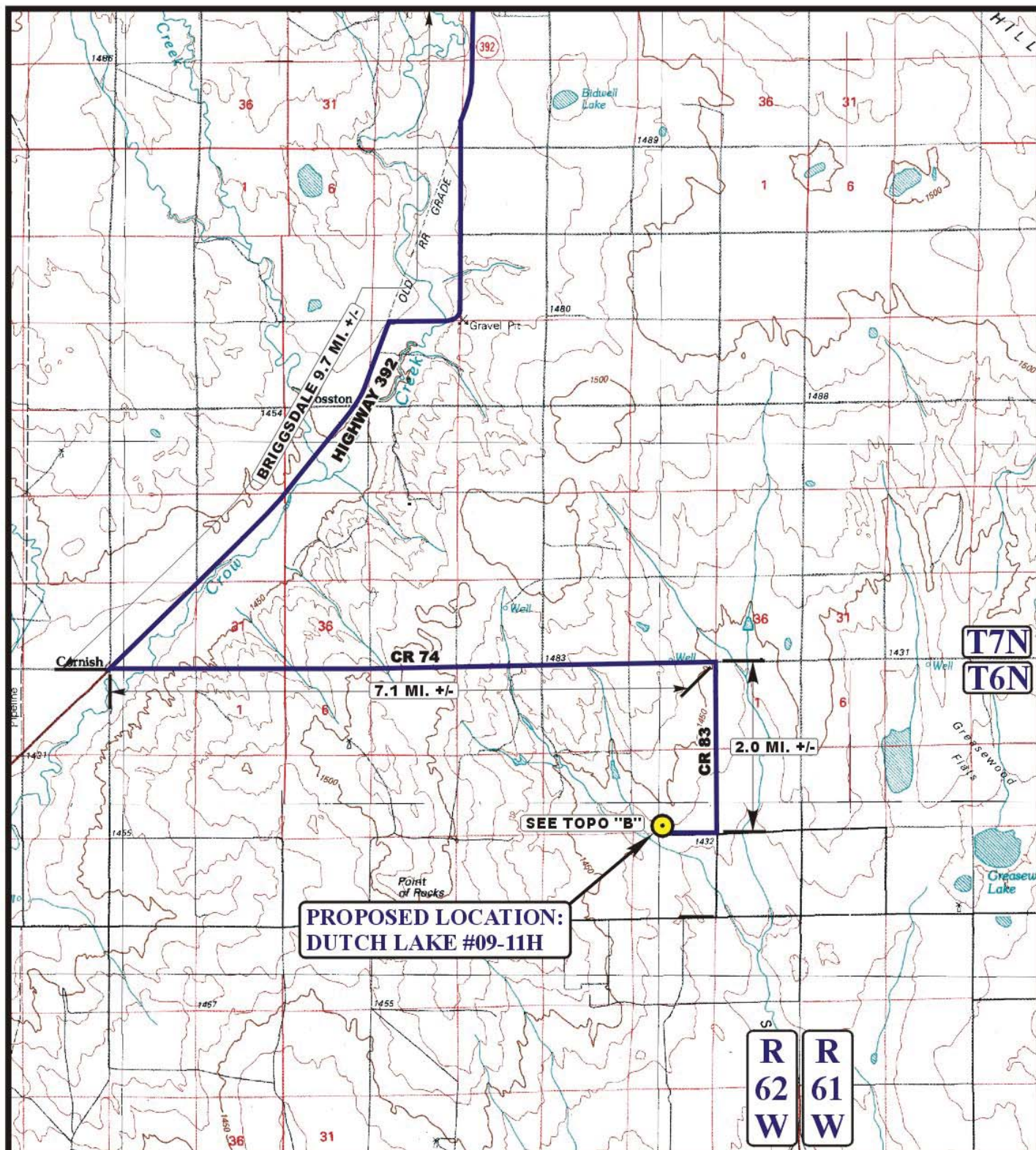


EOG RESOURCES, INC.
DUTCH LAKE #09-11H
SECTION 11, T6N, R62W, 6th P.M.

PROCEED IN A SOUTHERLY, THEN SOUTHWESTERLY DIRECTION FROM BRIGGSDALE, COLORADO ALONG HIGHWAY 392 APPROXIMATELY 9.7 MILES TO THE JUNCTION OF THIS ROAD AND COUNTY ROAD 74 TO THE EAST; TURN LEFT AND PROCEED IN AN EASTERLY DIRECTION APPROXIMATELY 7.1 MILES TO THE JUNCTION OF THIS ROAD AND COUNTY ROAD 83 TO THE SOUTH; TURN RIGHT AND PROCEED SOUTHERLY DIRECTION APPROXIMATELY 2.0 MILES TO THE BEGINNING OF THE PROPOSED ACCESS TO THE WEST; FOLLOW ROAD FLAGS IN A WESTERLY DIRECTION APPROXIMATELY 3,326' TO THE PROPOSED LOCATION.

TOTAL DISTANCE FROM BRIGGSDALE, COLORADO TO THE PROPOSED WELL LOCATION IS APPROXIMATELY 19.4 MILES.



LEGEND:

PROPOSED LOCATION

EOG RESOURCES, INC.

DUTCH LAKE #09-11H
SECTION 11, T6N, R62W, 6th P.M.
501' FSL 1801' FWL



Utah Engineering & Land Surveying
85 South 200 East Vernal, Utah 84078
(435) 789-1017 * FAX (435) 789-1813

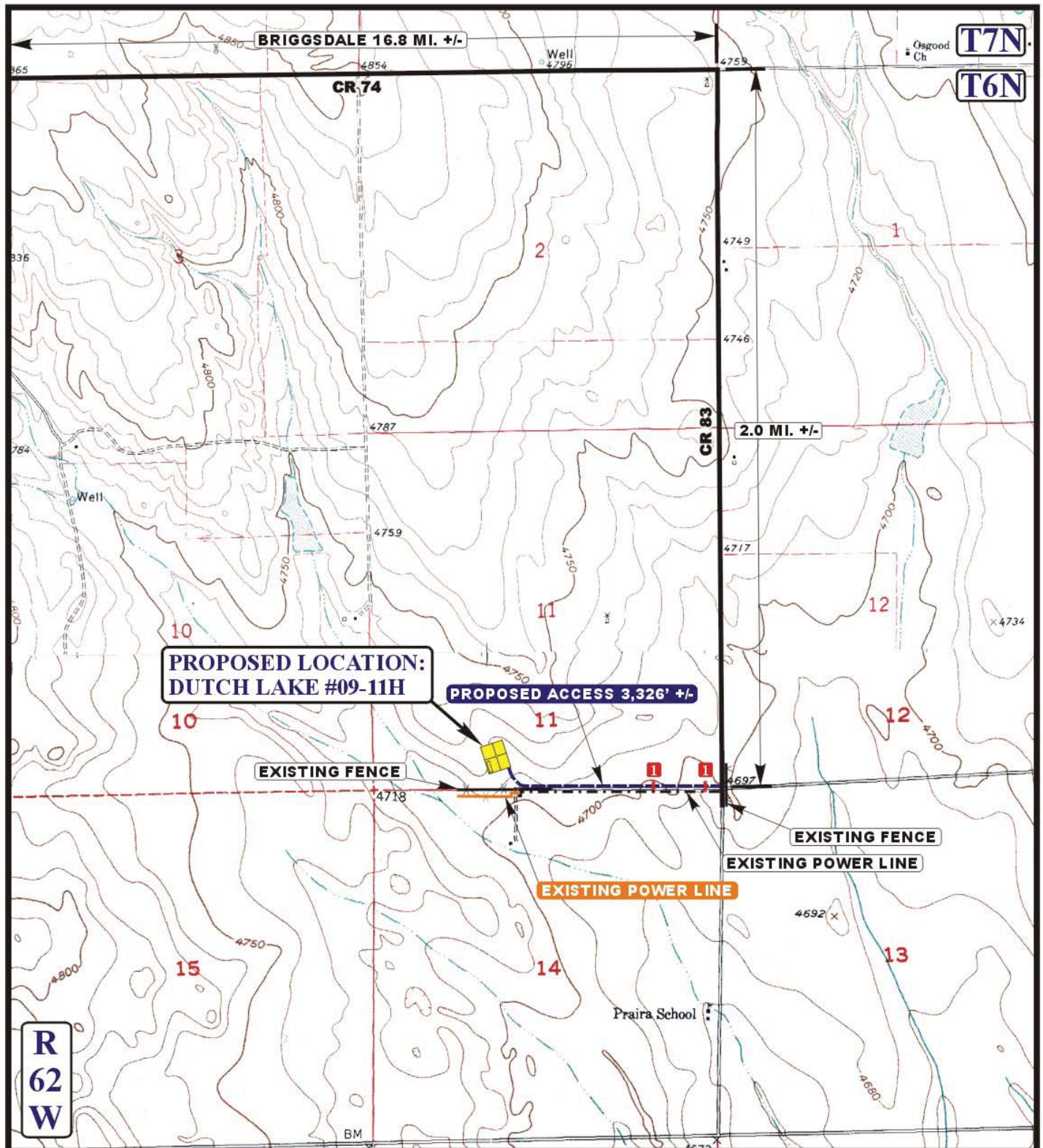


**ACCESS ROAD
MAP**

02 02 11
MONTH DAY YEAR

SCALE: 1:100,000 DRAWN BY: C.A.G. REVISED: 00-00-00





LEGEND:

- EXISTING ROAD
- PROPOSED ACCESS ROAD
- EXISTING FENCE
- EXISTING ELECTRIC FENCE
- EXISTING POWER LINE
- 18" CMP REQUIRED

EOG RESOURCES, INC.

DUTCH LAKE #09-11H
SECTION 11, T6N, R62W, 6th P.M.
501' FSL 1801' FWL



Utah Engineering & Land Surveying
85 South 200 East Vernal, Utah 84078
(435) 789-1017 * FAX (435) 789-1813



ACCESS ROAD
MAP

02 02 11
MONTH DAY YEAR

SCALE: 1" = 2000' DRAWN BY: C.A.G. REVISED: 00-00-00

B
TOPO