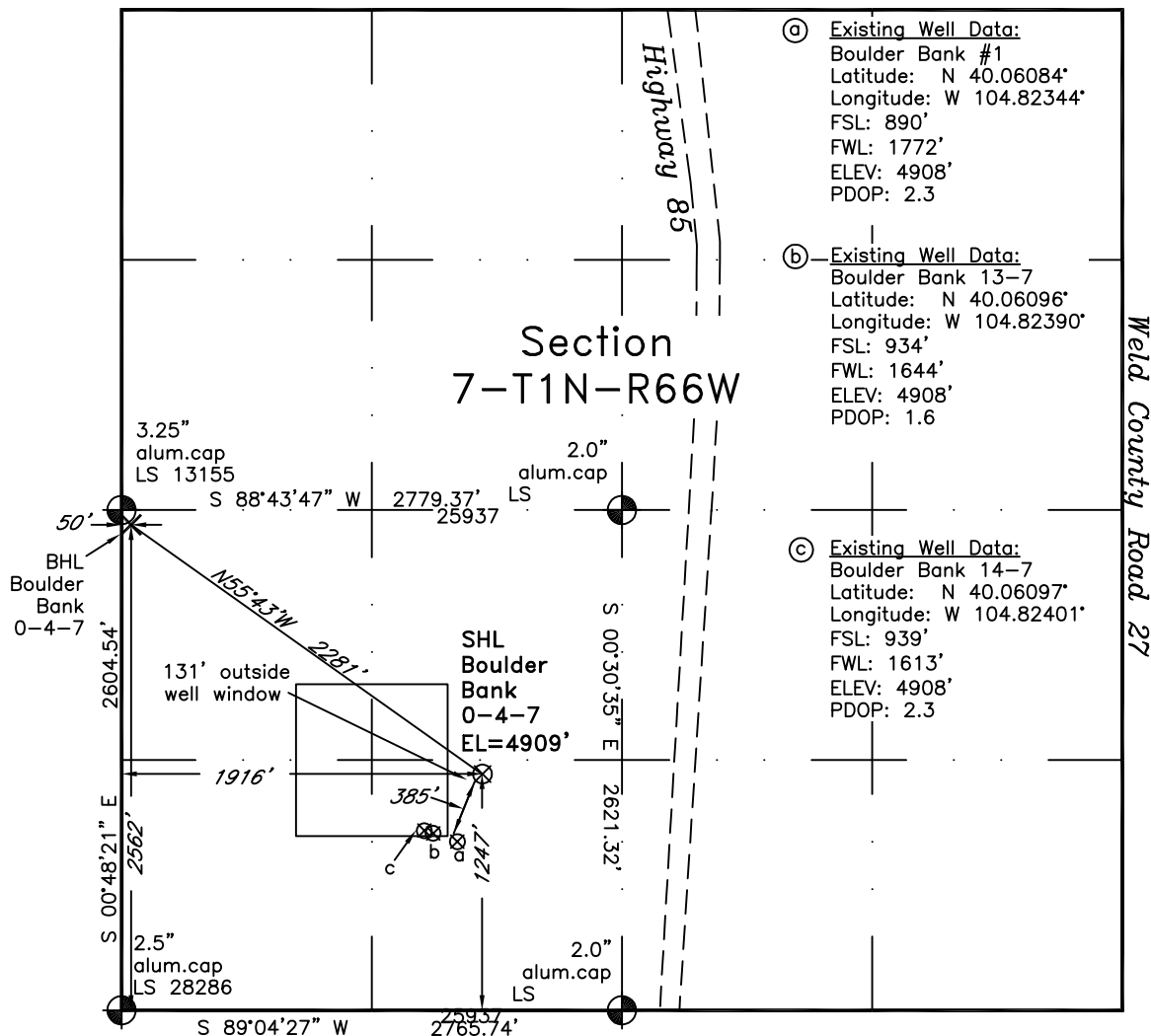


WELL LOCATION CERTIFICATE*THIS MAP DOES NOT REPRESENT A BOUNDARY SURVEY*

Scale 1" = 1000'

1000'

approximate scale

LEGEND

— found survey monument

(c) — calculated dimension

In accordance with a request from Dan Nelson of EnCana Oil & Gas (USA) Inc., Frederick Land Surveying, Inc. has determined the location of the **Boulder Bank 0-4-7** well site to be **SHL: 1247' FSL and 1916' FWL**, (BHL 2562' FSL and 50' FWL), as measured at ninety (90) degrees from the section lines of Section 7, Township 1 North, Range 66 West of the 6th Principal Meridian, Weld County Colorado.

Proposed Surface Hole Data:

Latitude: N 40.06182° BHL(40.06539°)

Longitude: W 104.82293° BHL(104.82963°)

Nearest: Building 822' east

Above Ground Utility 1081' east

Public Road 1114' east

Railroad 4100' east

Property Line 152' south

PDOP: 2.1

Notes:

- 1) Bearings and distances based on NAD 83 Colorado North State Plane Coordinates using RTK GPS observations taken 9/27/10 by operator Tom Winans.
- 2) Conversion factor to ground (1.000270169).
- 3) Elevations based on NAVD 88 GPS heights and Geoid 2003 corrections.
- 4) See improvement map for visible improvements within 400 feet of pad site.
- 5) The location falls on natural ground.

NOTICE: According to Colorado law you must commence any legal action based upon any defect in this W.L.C. within three years after you first discover such defect. In no event may any action based upon any defect in this W.L.C. be commenced more than ten years from this said date of the certification shown hereon.

I hereby certify that this Well Location Certificate was prepared by me or under my direct supervision on 9/30/10 for and on behalf of EnCana Oil & Gas (USA) Inc. That it is not a Land Survey Plat or an Improvement Survey Plat and that it is not to be relied upon for establishment of fences, buildings, or other future improvement lines.

John Robert McGehee LS#38219
 Job #: 10052.004