

Schlumberger

PERFORM - Drilling Mechanics

2 in / hr Time Based

Real Time Log

Company: ExxonMobil Oil Corporation

Well: Freedom Unit 197 33B1

Field: Piceance Creek

County: Rio Blanco

State: Colorado

Country: U.S.A

APIN: 051031142800

Rig Name: H & P 321

Rig Type: Flex 4

Section: 33

Township: 1S

Range: 97W

FL: NAD 27 Colorado State Planes, Northern Zone

FL1: X: 1219870.407 ft Latitude: 39° 55' 17.330" N

FL2: Y: 226478.174 ft Longitude: 108° 16' 54.590" W

Log Measured From - Drill Floor: 6476.0 ft

Ground Level: 6446.0 ft

Permanent Datum - Mean Sea Level

Acquisition Dates: 26 Mar 10 to 21 Jun 10

Print Interval: 3/26/2010 2:39:51 PM to 6/21/2010 10:20:16 PM

Index Types: Time

Index Scales: 2" / 3600 secs

Depth Source: Driller's Depth

Depth Sensor: 3rd Party Depth

Conveyance: Drill Pipe

Print Type: Final

Spud Date: 3/26/2010

Other Services:

Directional Drilling



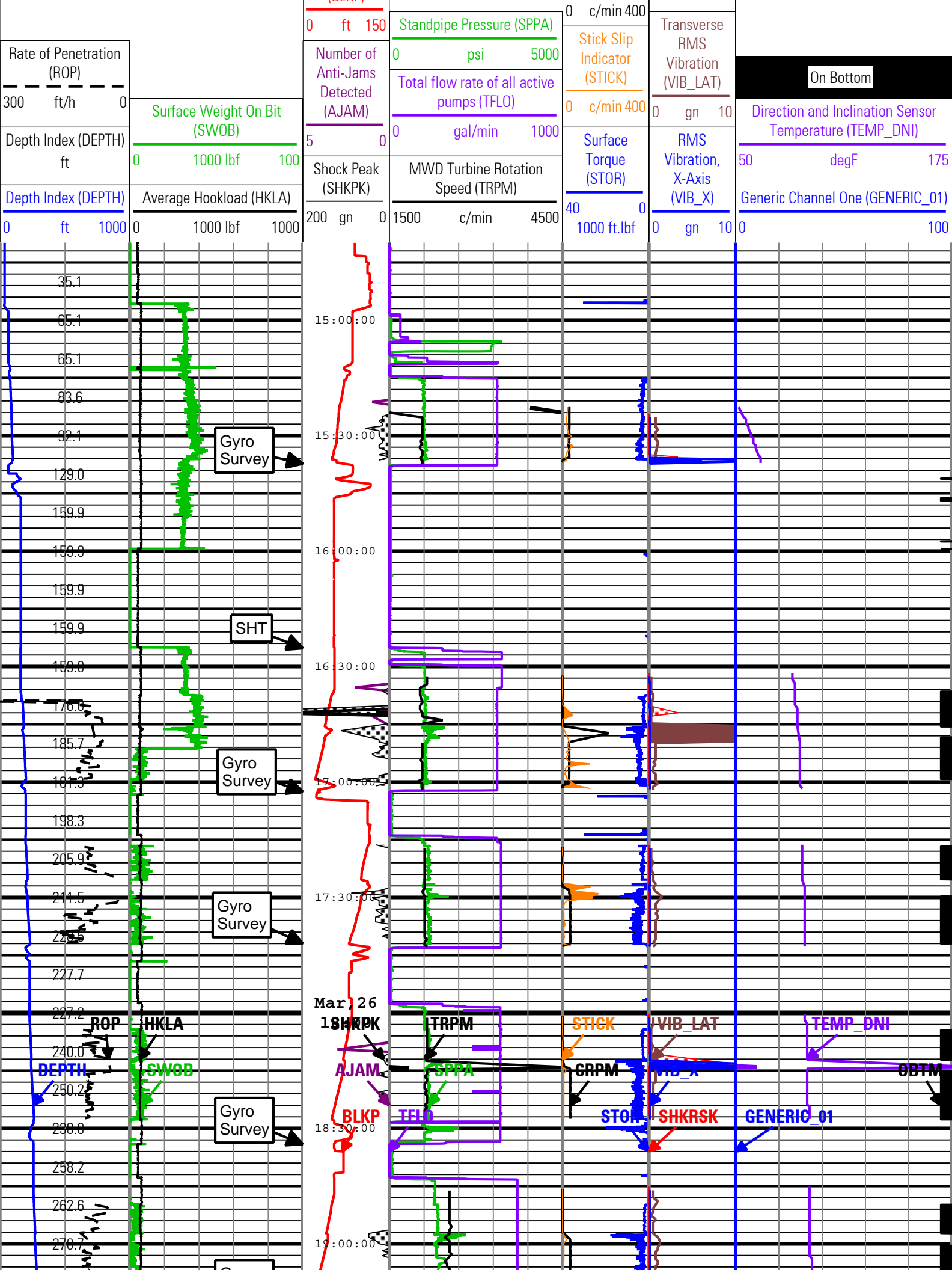
Disclaimer

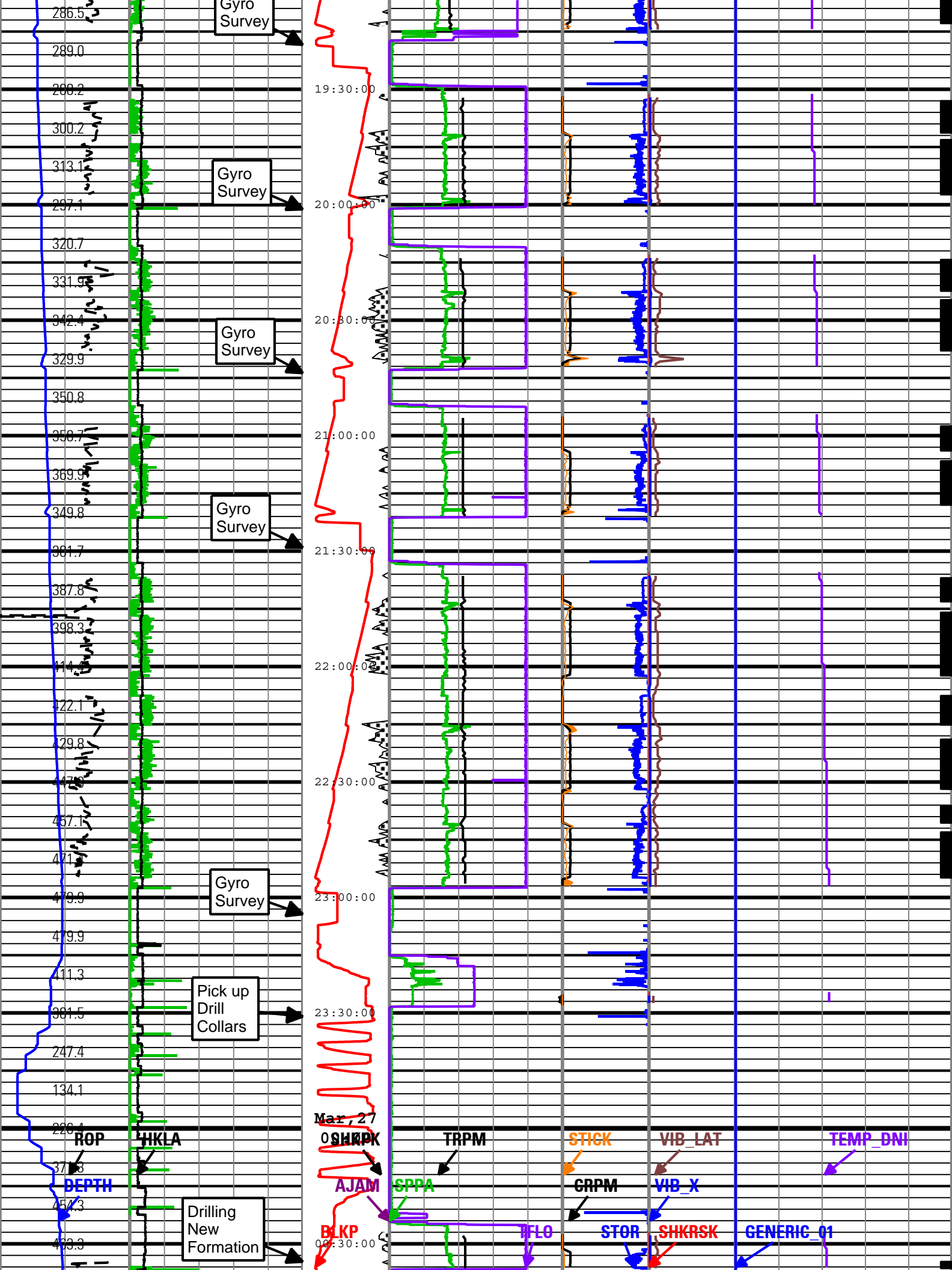
THE USE OF AND RELIANCE UPON THIS RECORDED-DATA BY THE HEREIN NAMED COMPANY (AND ANY OF ITS AFFILIATES, PARTNERS, REPRESENTATIVES, AGENTS, CONSULTANTS AND EMPLOYEES) IS SUBJECT TO THE TERMS AND CONDITIONS AGREED UPON BETWEEN SCHLUMBERGER AND THE COMPANY, INCLUDING: (a) RESTRICTIONS ON USE OF THE RECORDED-DATA; (b) DISCLAIMERS AND WAIVERS OF WARRANTIES AND REPRESENTATIONS REGARDING COMPANY'S USE AND RELIANCE UPON THE RECORDED-DATA; AND (c) CUSTOMER'S FULL AND SOLE RESPONSIBILITY FOR ANY INFERENCE DRAWN OR DECISION MADE IN CONNECTION WITH THE USE OF THIS RECORDED-DATA.

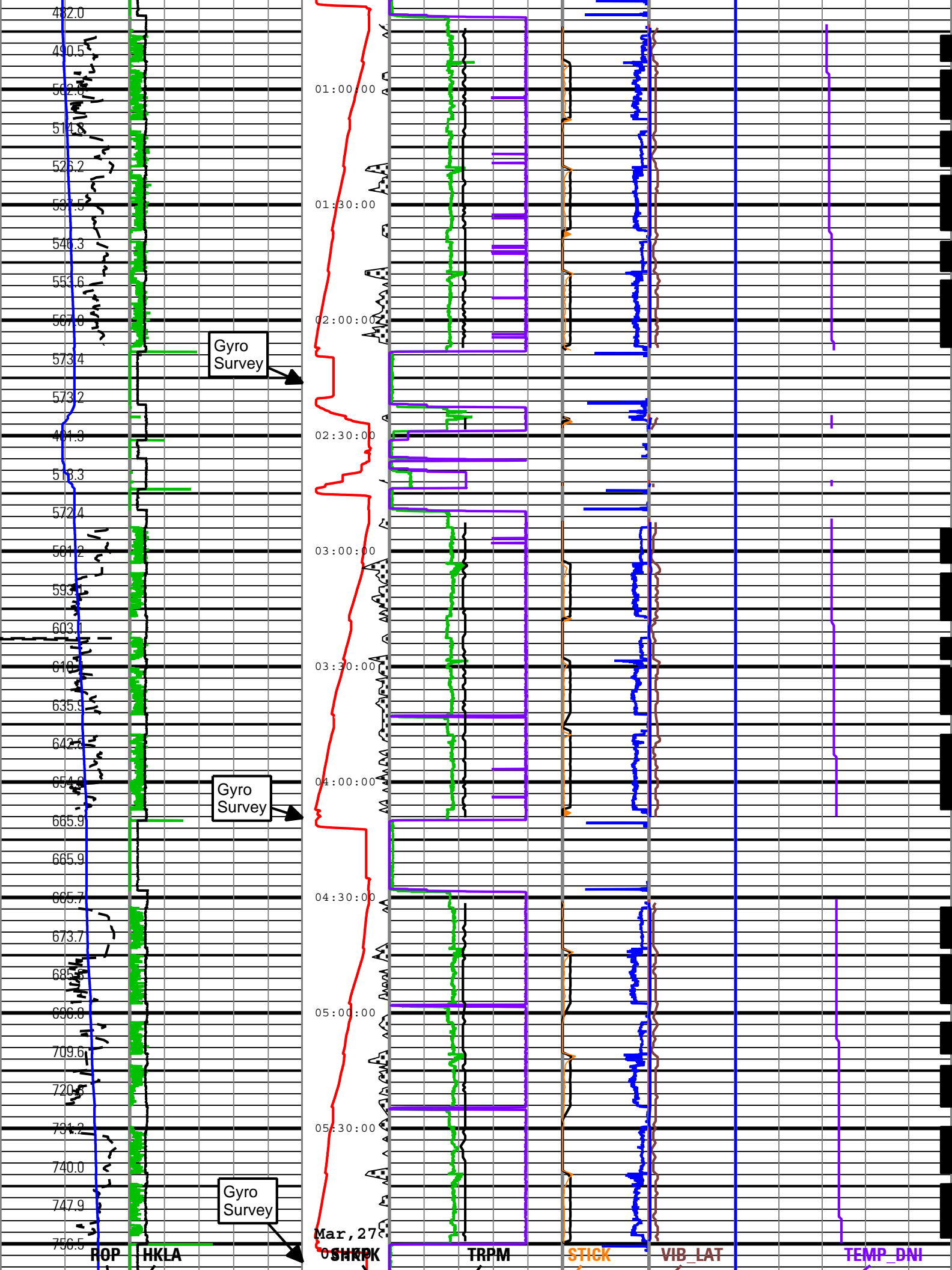
Contents

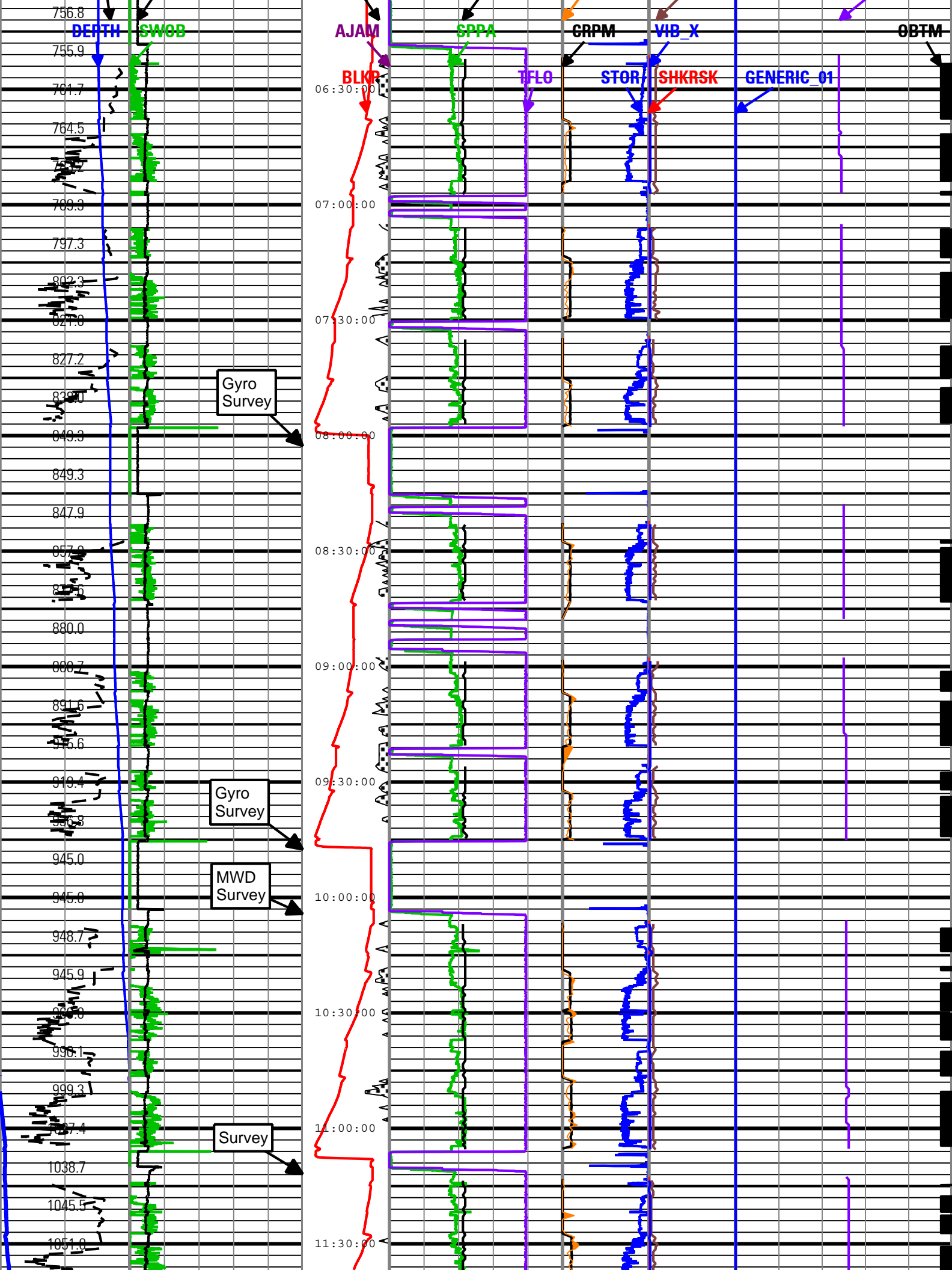
- 1. Header
- 2. Disclaimer
- 3. Contents
- 4. Run 1 PERFORM - Drilling Mechanics
 - 4.1 Software Version
 - 4.2 Pass Summary
 - 4.3 Log (PERFORM - Drilling Mechanics)
- 5. Run 2 PERFORM - Drilling Mechanics
 - 5.1 Software Version
 - 5.2 Pass Summary
 - 5.3 Log (PERFORM - Drilling Mechanics)
- 6. Tail

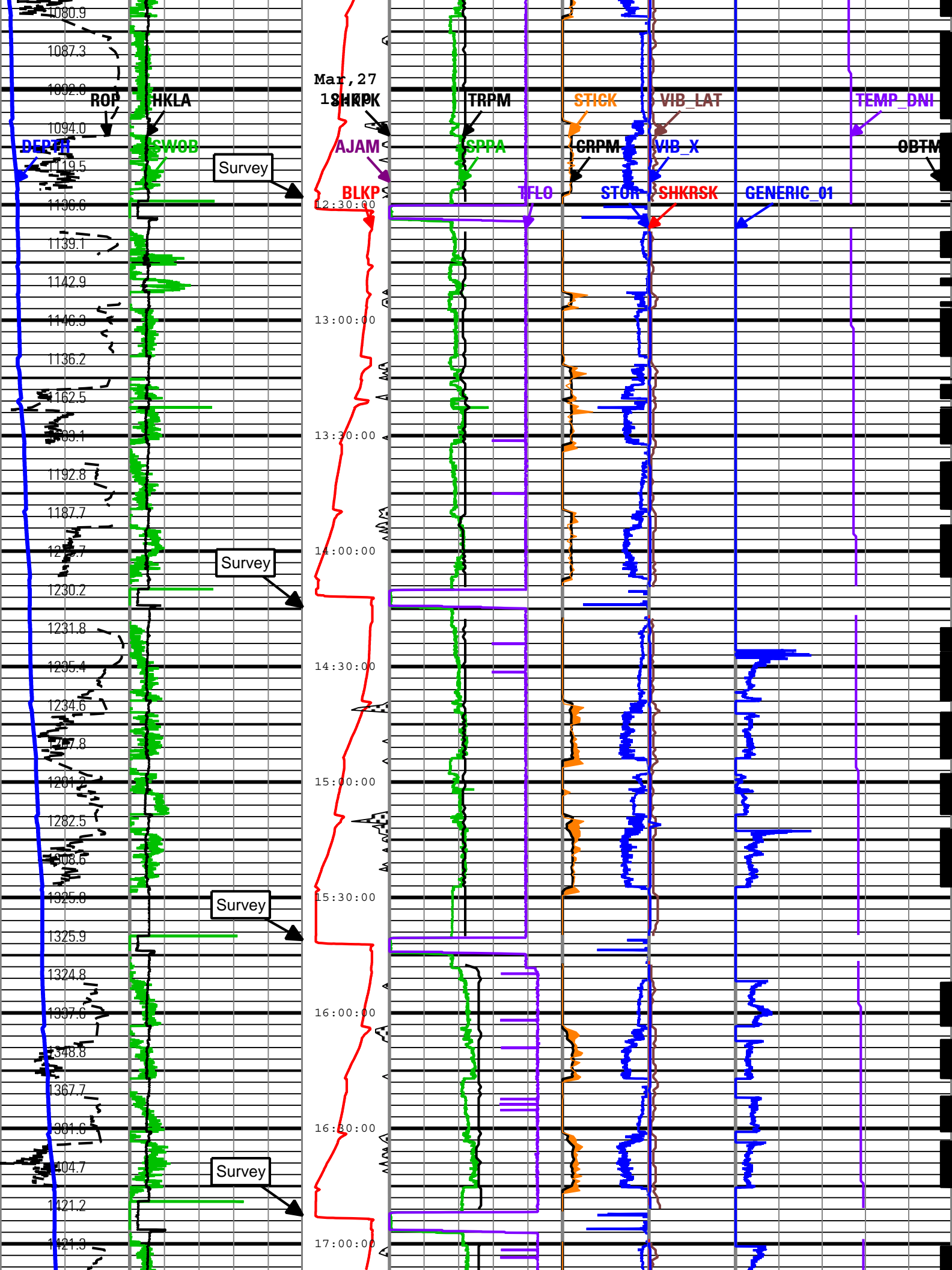
[illegible]

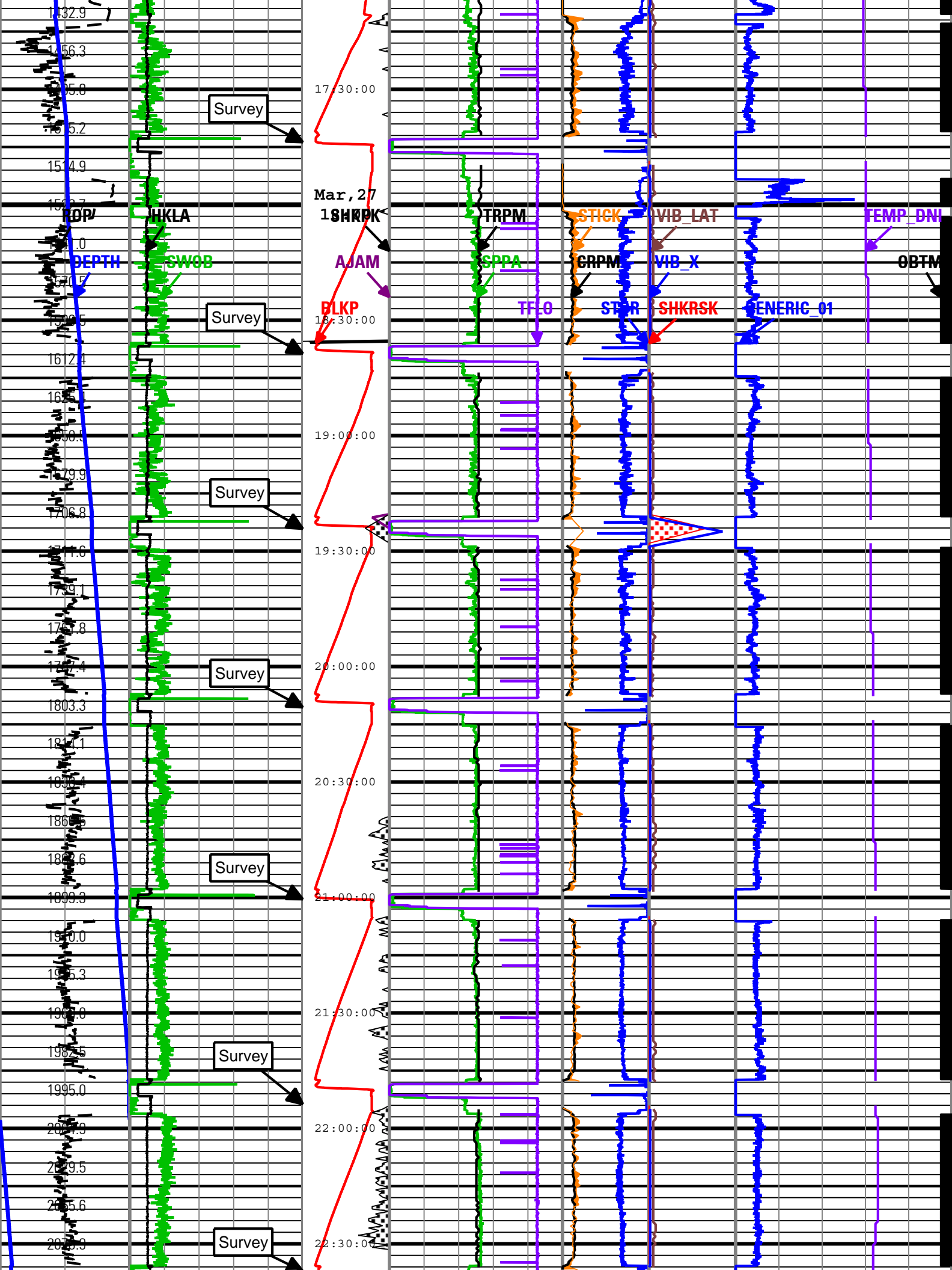


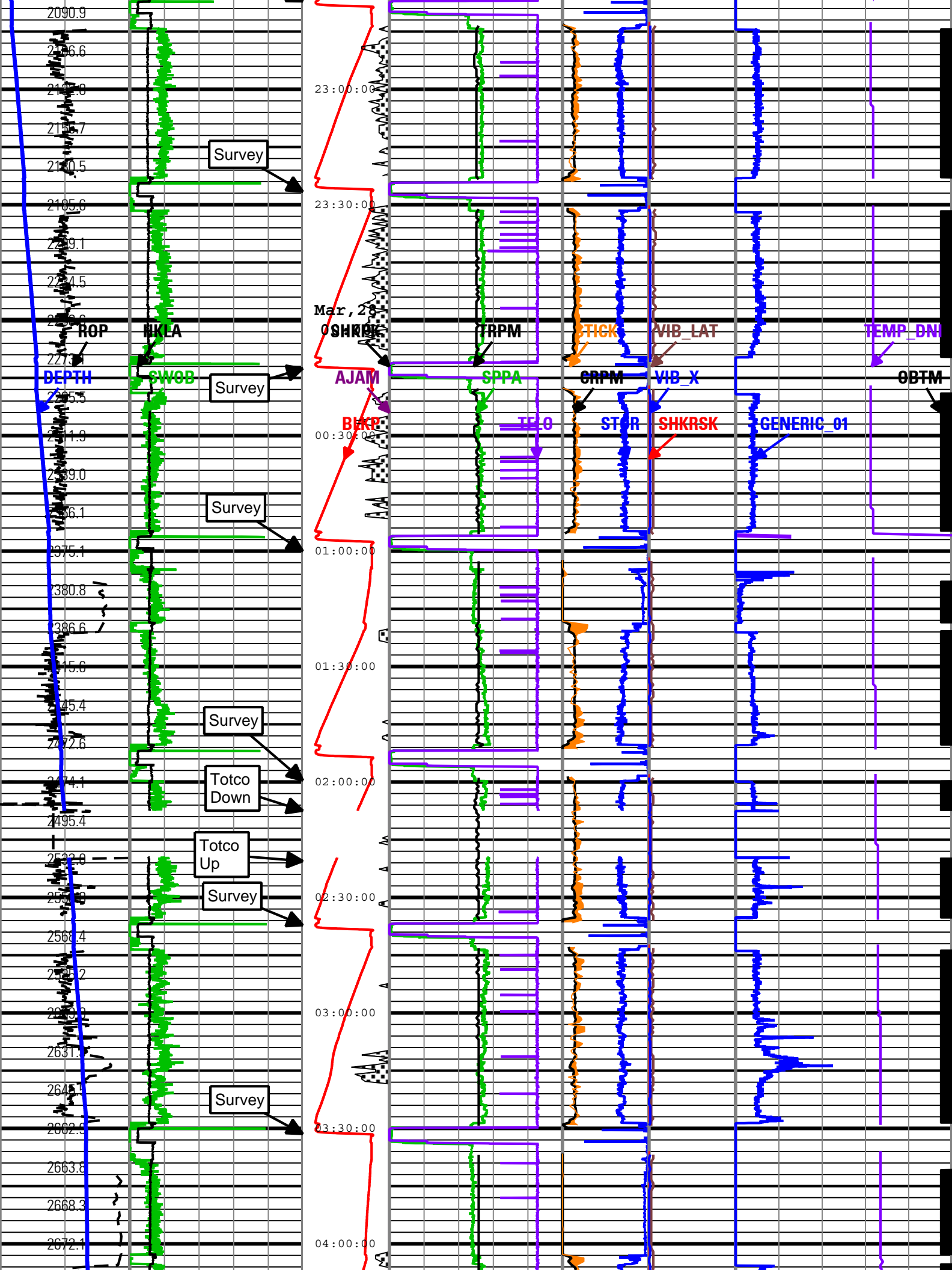


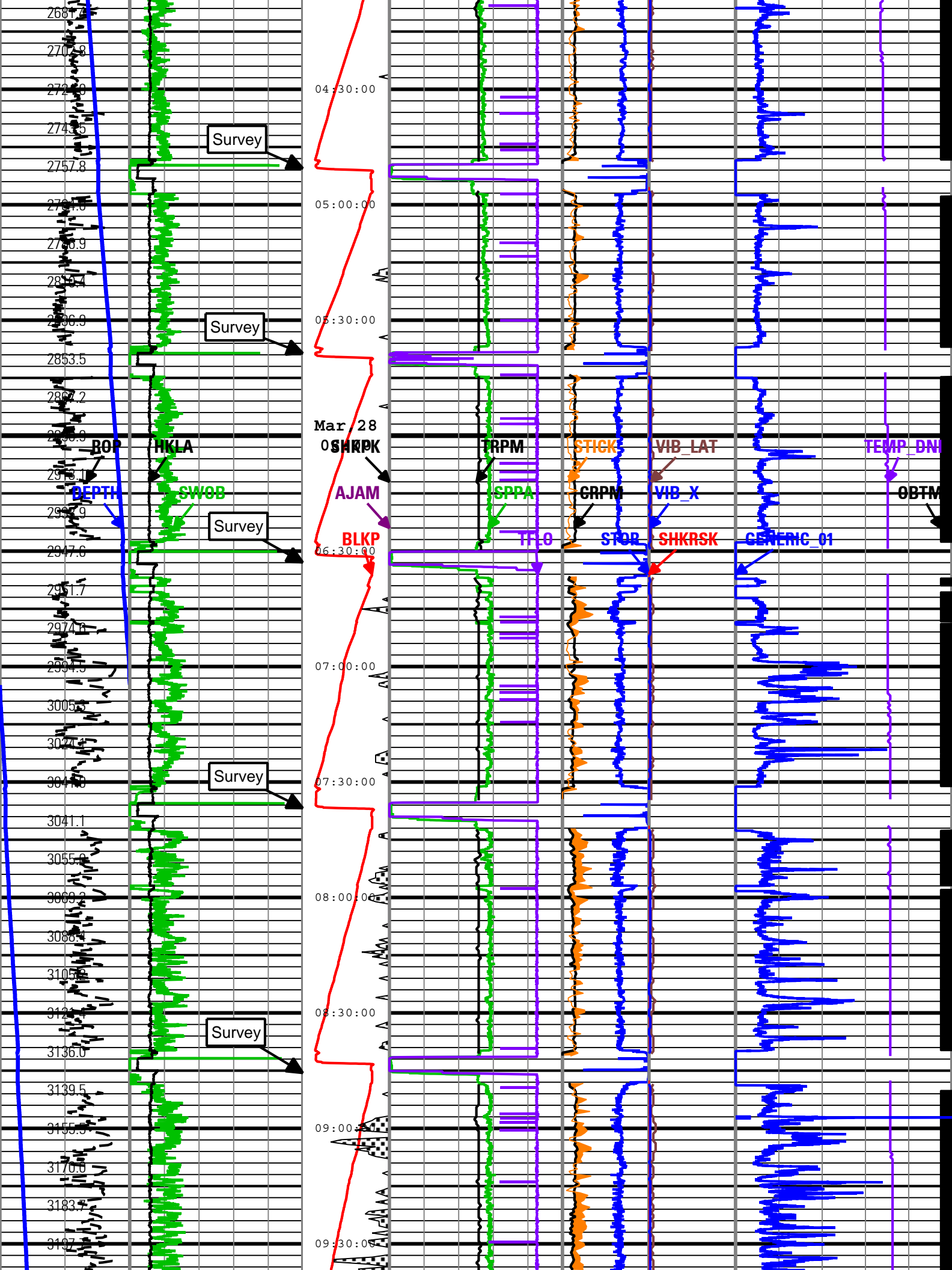


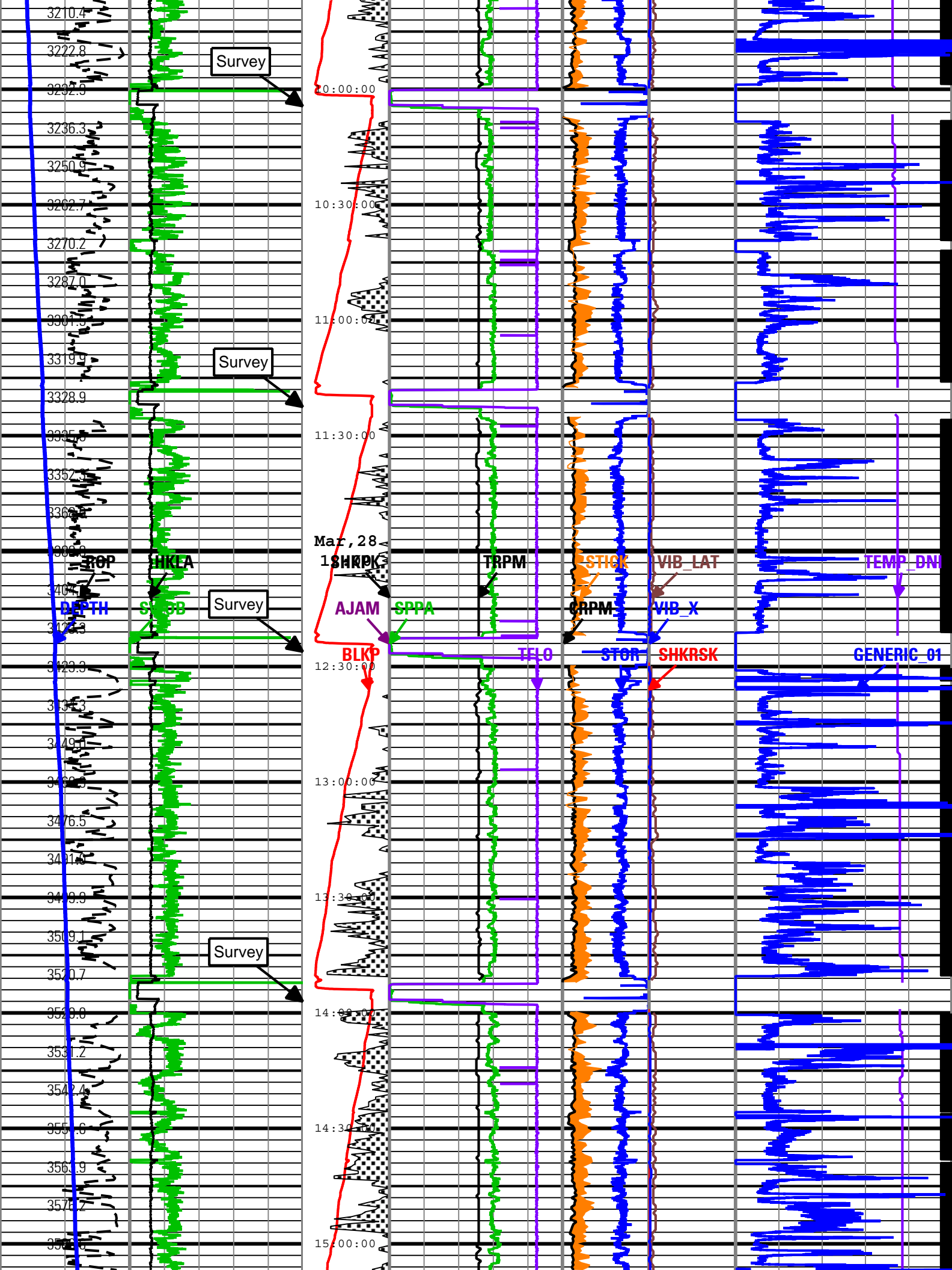


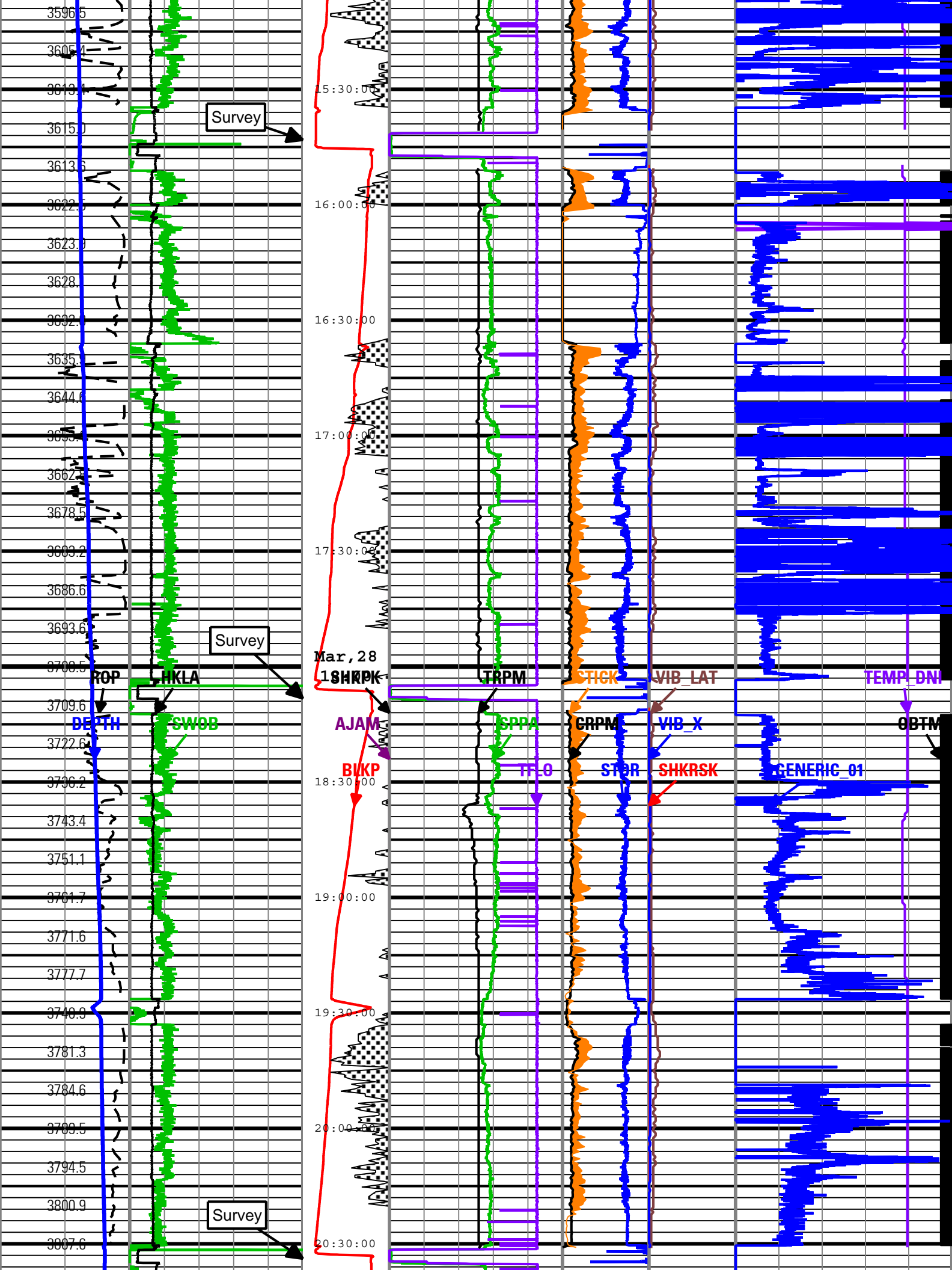


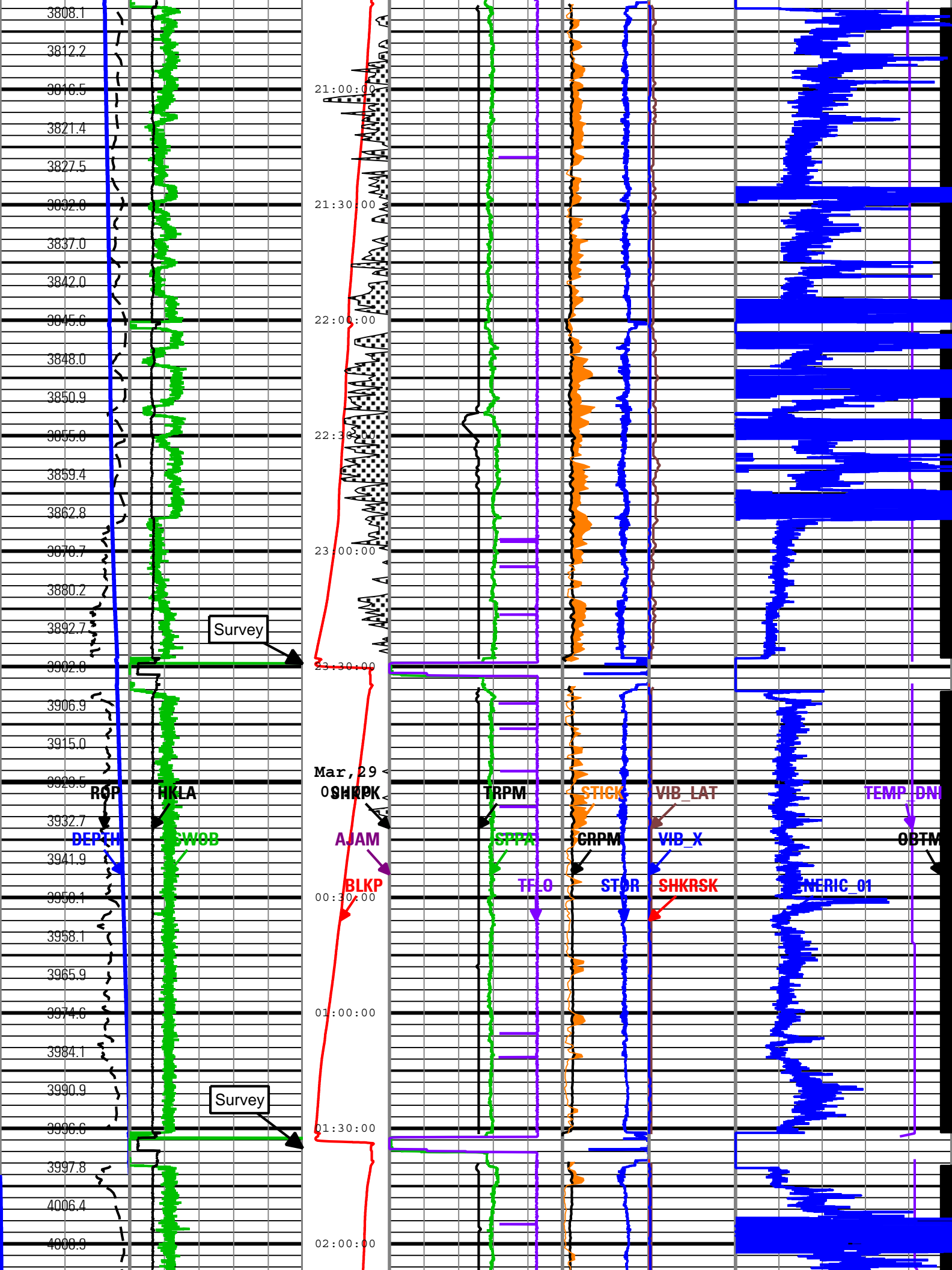


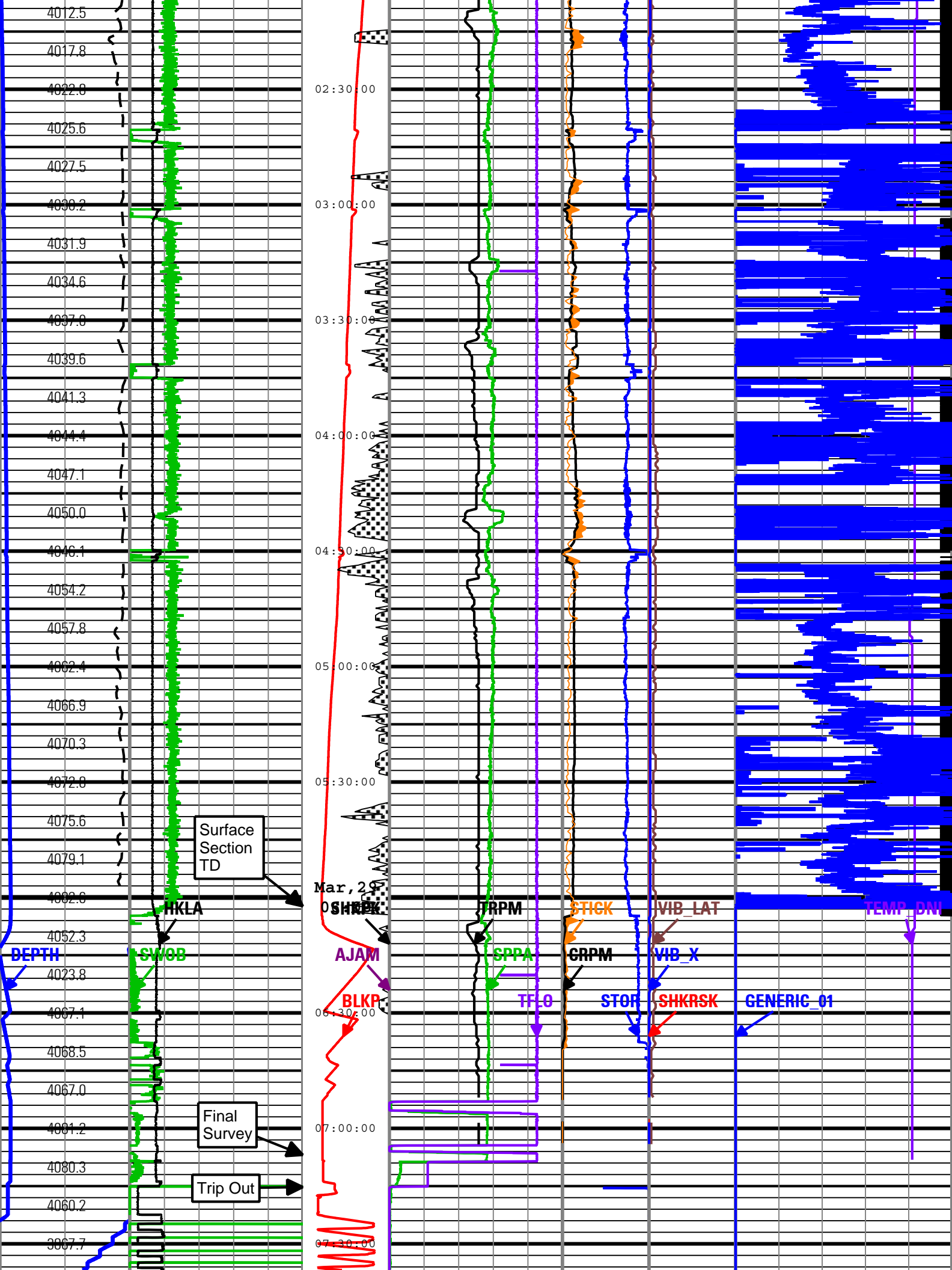


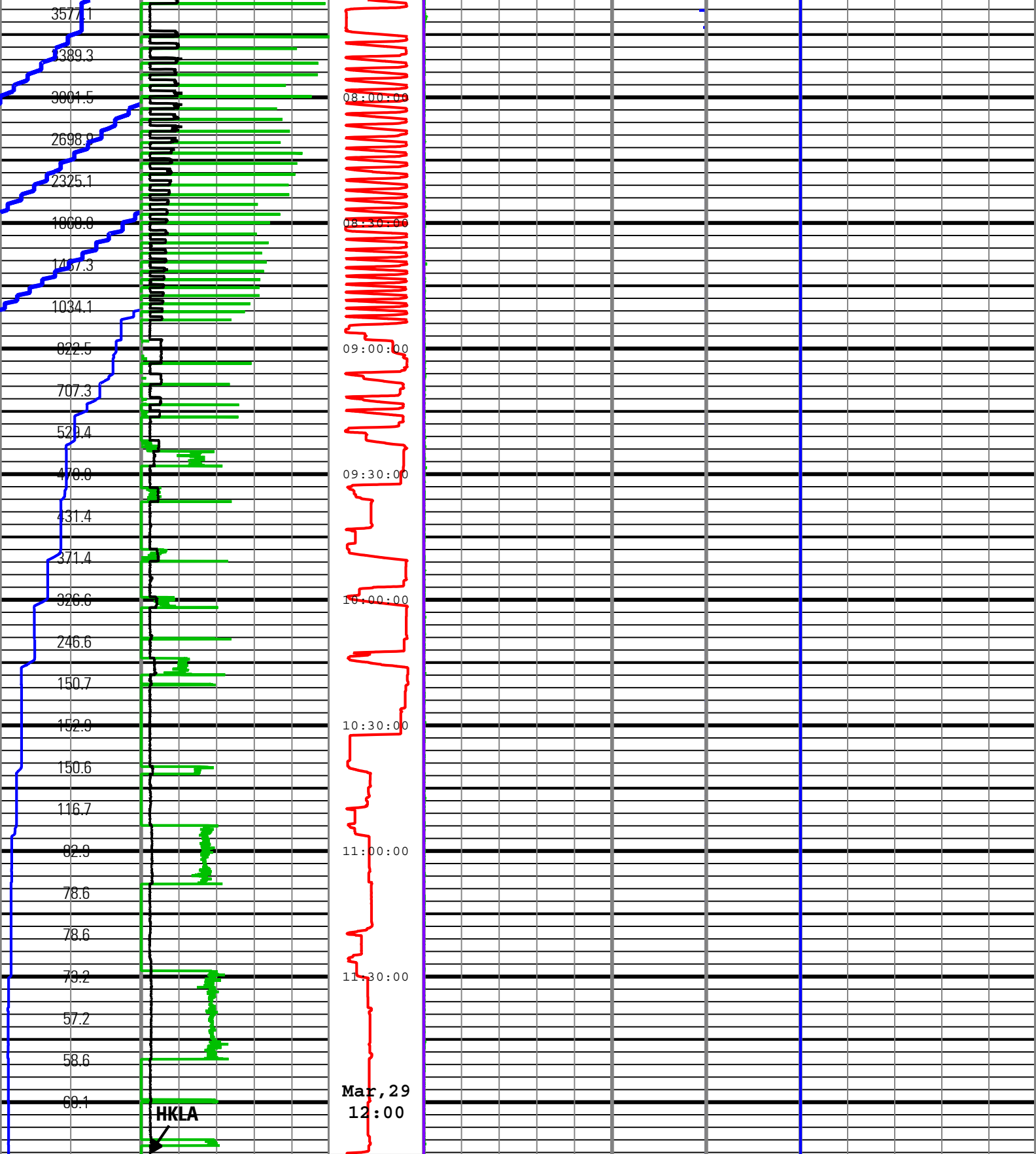












Rate of Penetration (ROP)			Surface Weight On Bit (SWOB)			Shock Peak	Standpipe Pressure (SPPA)			High StickSlip	Shock Risk	On Bottom				
300	ft/h	0	0	1000 lbf	100	Height of block above rig floor (BLKP)	0	psi	5000	Collar Rotational Speed (CRPM)	Shock Risk (SHKRSK)	Direction and Inclination Sensor Temperature (TEMP_DNI)				
Depth Index (DEPTH)			Average Hookload (HKLA)				Total flow rate of all active pumps (TFLO)					0	gal/min	1000	50	degF
ft			0	1000 lbf	1000		0	ft	150	MWD Turbine Rotation Speed (TRPM)			Generic Channel One (GENERIC_01)			
Depth Index (DEPTH)						Number of Anti-Jams Detected				0	c/min	400	Transverse RMS Vibration (VIB_LAT)			
0	ft	1000					1500	c/min	4500	Stick Slip Indicator				0		100

	Detected (AJAM)	1000	g/min	1000	Indicator (STICK)	0	gn	10
	5	0			0	c/min	400	RMS Vibration, X-Axis (VIB_X)
	Shock Peak (SHKPK)				Surface Torque (STOR)	0	gn	10
	200	gn	0		40	0		
					1000 ft.lbf			

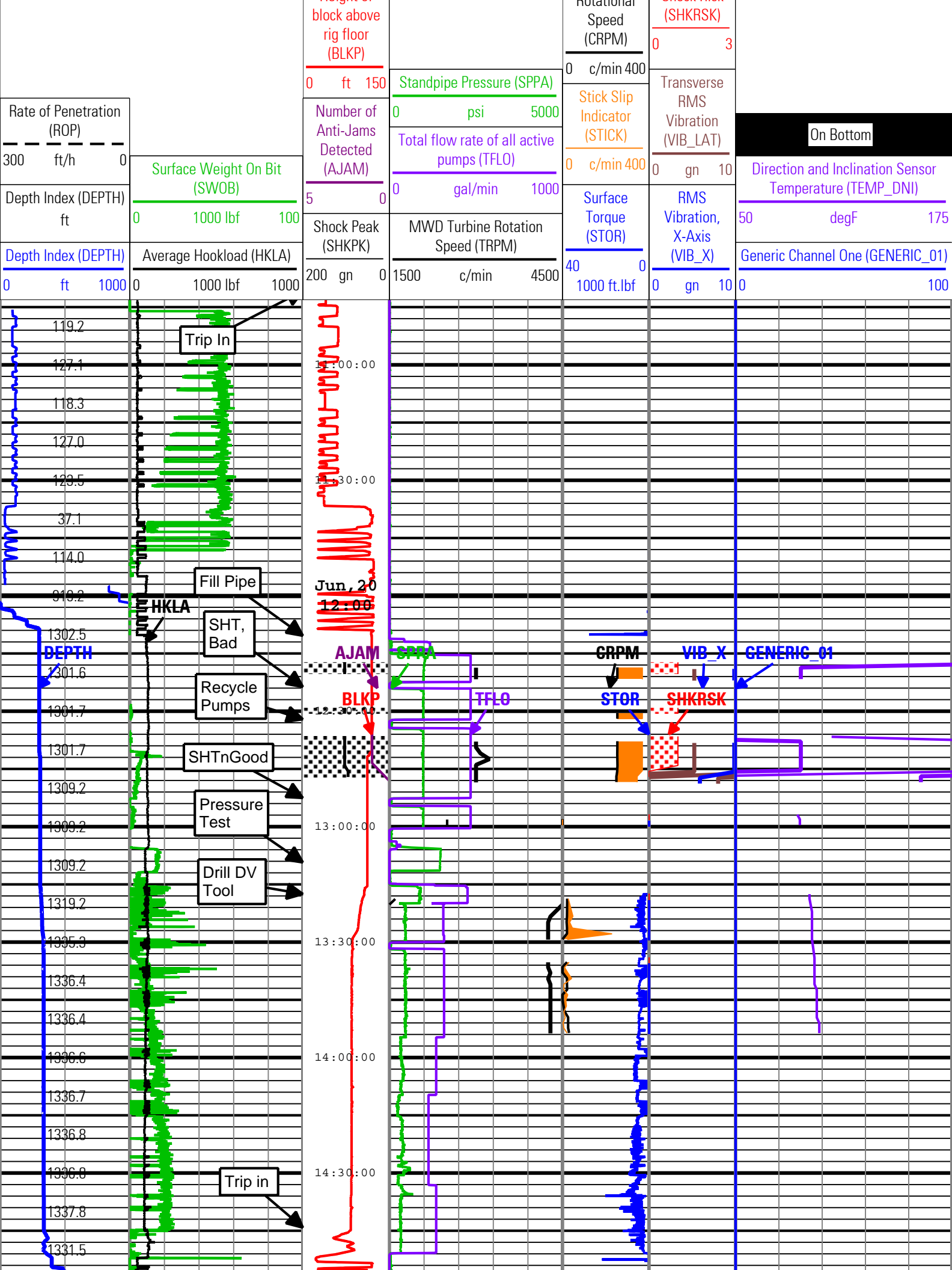
Description: TeleScope + ARC Drilling Mechanics Time RT Format: Log (PERFORM - Drilling Mechanics) Index Scale: 2 in per 3600 s Index Type: Time
Creation Date: 22-Jun-2010 05:47:15

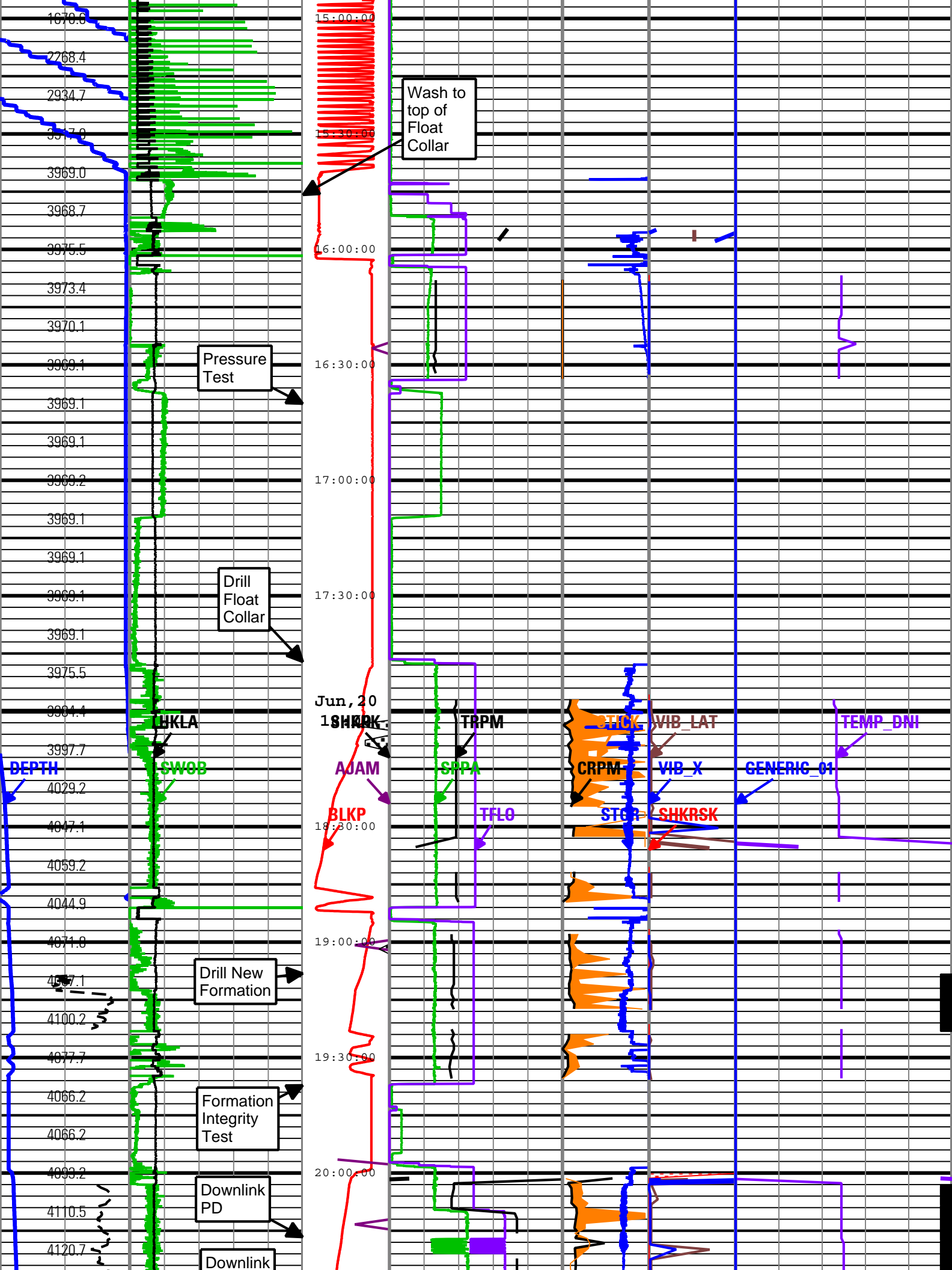
Run 2						
PERFORM - Drilling Mechanics						
Software Version						
Acquisition System				Version		
MaxWell				1.2.8706.0		
Framework Patch				FWK-BGC-20091125-1.2.8706.1057		
Application Patch				APL-SRPC-DnM-1.2.8706.1045		
Tool Elements		Description		Software Version		Firmware Version
DRILLING_SURFACE		DRILLING_SURFACE		1.2.8706.1057		
Pass Summary						
Run Name	Pass Objective	Direction	Start	Stop	Acquisition Start Date	Acquisition Start Time
Run 2	TimeLogicalAcq	Down	20-Jun-2010 10:43:10	21-Jun-2010 22:20:14	20-Jun-2010	10:43:10
Log	Run 2: TimeLogicalAcq 87F8A486-3189-45D2-8D30-8E8B40EA08FB					

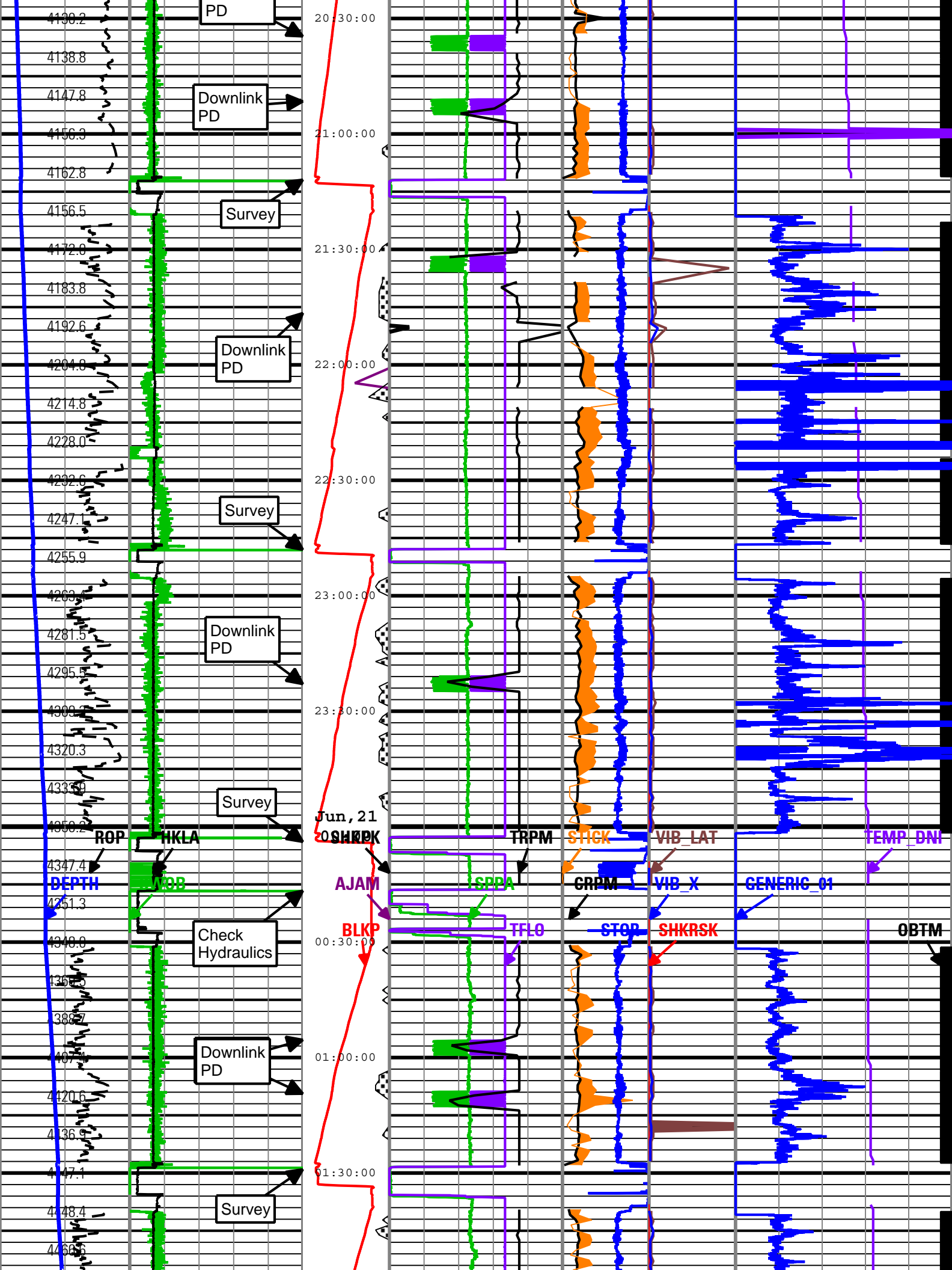
Description: TeleScope + ARC Drilling Mechanics Time RT Format: Log (PERFORM - Drilling Mechanics) Index Scale: 2 in per 3600 s Index Type: Time
Creation Date: 22-Jun-2010 05:47:29

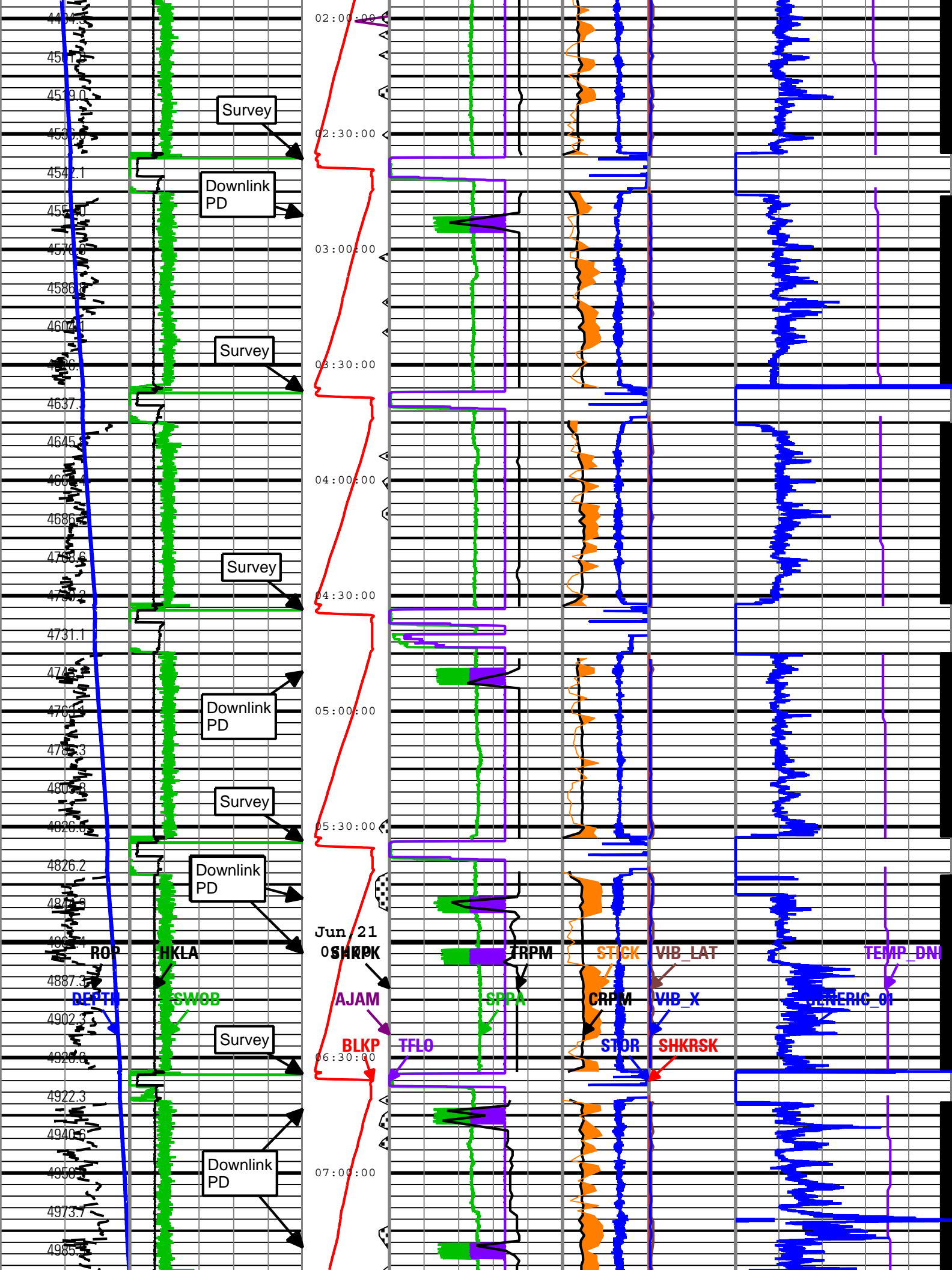
AJAM	TELE675:TELE675	ACQ - RT
BLKP	DRILLING_SURFACE	ACQ - RT
CRPM	TELE675:TELE675	ACQ - RT
DEPTH	DnMWorkflow	ACQ - RT
GENERIC_01	DRILLING_SURFACE	ACQ - RT
HKLA	DRILLING_SURFACE	ACQ - RT
OBTM	DnMWorkflow	ACQ - RT
ROP	DRILLING_SURFACE	ACQ - RT
SHKPK	TELE675:TELE675	ACQ - RT
SHKRSK	TELE675:TELE675	ACQ - RT
SPPA	DRILLING_SURFACE	ACQ - RT
STICK	TELE675:TELE675	ACQ - RT
STOR	DRILLING_SURFACE	ACQ - RT
SWOB	DRILLING_SURFACE	ACQ - RT
TEMP_DNI	TELE675:TELE675	ACQ - RT
TFLO	DRILLING_SURFACE	ACQ - RT
TRPM	TELE675:TELE675	ACQ - RT
VIB_LAT	TELE675:TELE675	ACQ - RT
VIB_X	TELE675:TELE675	ACQ - RT

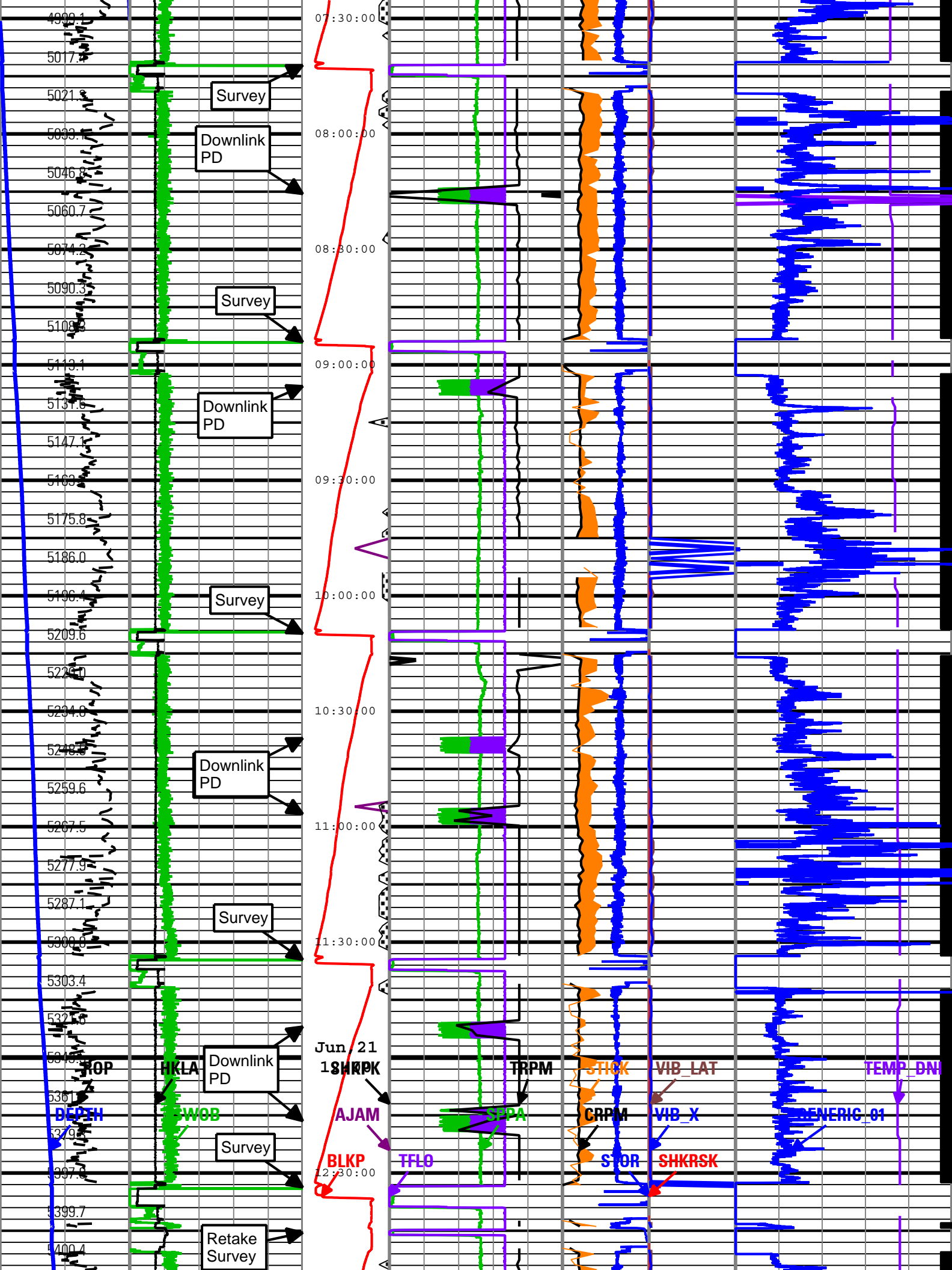
Shock Peak Height of	High SticknSlip	Shock Risk
	Collar Rotational	Shock Risk

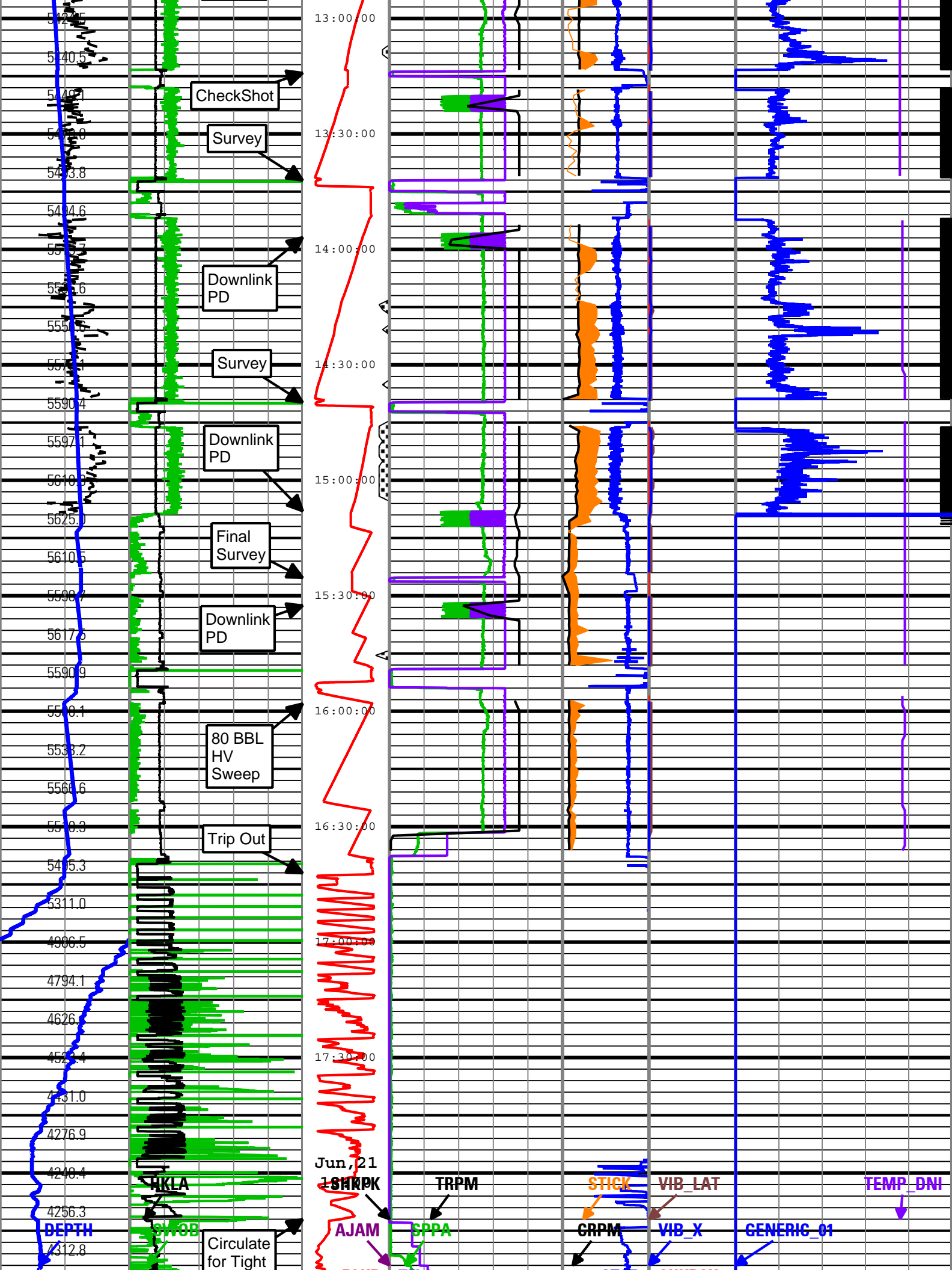


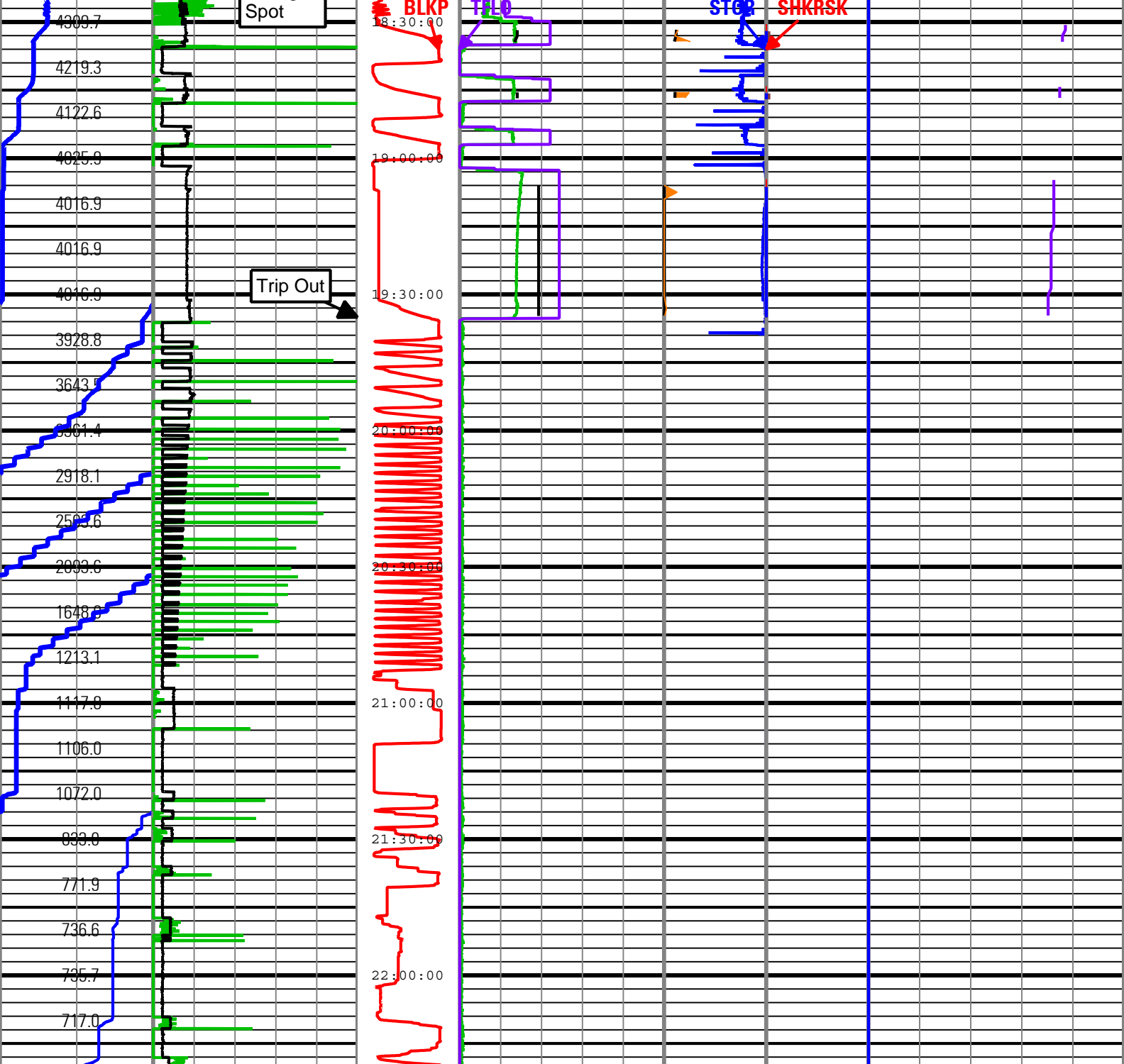






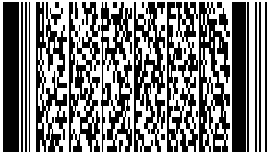







Rate of Penetration (ROP)			Surface Weight On Bit (SWOB)			Shock Peak		Standpipe Pressure (SPPA)		High StickSlip		Shock Risk		On Bottom	
300 ft/h 0			0 1000 lbf 100			Height of block above rig floor (BLKP)		0 psi 5000		Collar Rotational Speed (CRPM)		Shock Risk (SHKRSK)		Direction and Inclination Sensor Temperature (TEMP_DNI)	
Depth Index (DEPTH) ft			Average Hookload (HKLA)			0 ft 150		Total flow rate of all active pumps (TFLO)		0 c/min 400		0 3		50 degF 175	
Depth Index (DEPTH) 0 ft 1000			0 1000 lbf 1000			Number of Anti-Jams Detected (AJAM)		MWD Turbine Rotation Speed (TRPM)		Stick Slip Indicator (STICK)		Transverse RMS Vibration (VIB_LAT)		Generic Channel One (GENERIC_01)	
						5 0		1500 c/min 4500		0 c/min 400		0 gn 10		0 100	
						Shock Peak (SHKPK)				Surface Torque (STOR)		RMS Vibration, X-Axis (VIB_X)			
						200 gn 0				40 0		0 gn 10			

Company:	ExxonMobil Oil Corporation
Well:	Freedom Unit 197 33B1
Field:	Piceance Creek
County:	Rio Blanco
State:	Colorado
Country:	U.S.A





PERFORM - Drilling Mechanics

2 in / hr Time Based

Real Time Log