

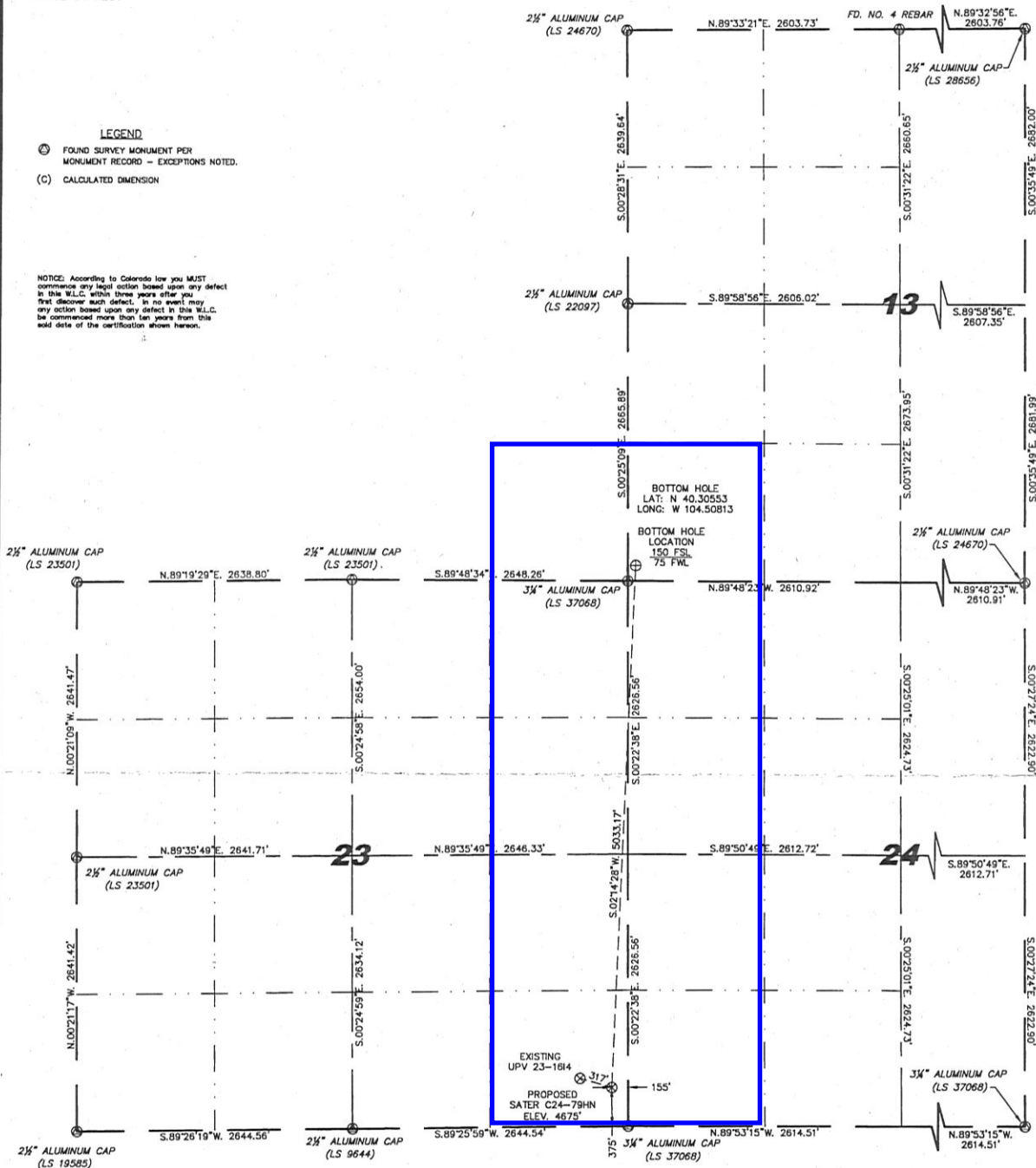
SECTION 13, 23 & 24  
TOWNSHIP 4 NORTH  
RANGE 64 WEST

WELL LOCATION CERTIFICATE  
THIS MAP DOES NOT REPRESENT A BOUNDARY SURVEY

## LEGEND

- (M) FOUND SURVEY MONUMENT PER  
MONUMENT RECORD - EXCEPTIONS NOTED.  
(C) CALCULATED DIMENSION

NOTICE: According to Colorado law you MUST  
commence any legal action based upon any defect  
in this W.L.C. within three years after you  
first discover such defect. In no event may  
any action based upon any defect in this W.L.C.  
be commenced more than ten years from this  
date of the certification shown hereon.



IN ACCORDANCE WITH A REQUEST FROM ERIK VAN DEKAR - NOBLE ENERGY INC.  
STELL SURVEYING SERVICES, LLC HAS DETERMINED THE LOCATION OF THE SATER  
C24-79HN WELL TO BE 375' FSL, 155' FSL, AS MEASURED AT NINETY (90)  
DEGREES FROM THE SECTION LINES, SECTION 13, 23 & 24, TOWNSHIP 4 NORTH,  
RANGE 64 WEST, 6TH PRINCIPLE MERIDIAN, WELD COUNTY, COLORADO.

I HEREBY CERTIFY THAT THIS WELL LOCATION CERTIFICATE WAS PREPARED BY ME,  
OR UNDER MY DIRECT SUPERVISION, THAT THE FIELD WORK WAS COMPLETED ON  
11/08/2010, FOR AND ON BEHALF OF NOBLE ENERGY INC. THAT IT IS NOT A LAND  
SURVEY PLAT OR AN IMPROVEMENT SURVEY PLAT, AND THAT IT IS NOT TO BE  
RELIED UPON FOR ESTABLISHMENT OF FENCE, BUILDING, OR OTHER FUTURE  
IMPROVEMENT LINES.

LATITUDE & LONGITUDE (NAD 83 SURFACE HOLE):

LATITUDE: N 40.29173  
LONGITUDE: W 104.50904  
PDOP: 2.1  
QUARTER-QUARTER: SE/4SE/4 SEC 23  
NEAREST PROPERTY LINE: 155' EAST

## NOTES:

- 1) BASIS OF BEARINGS FOR THIS MAP ARE BASED UPON GPS OBSERVATIONS  
MADE ON 11/08/2010 BETWEEN MONUMENTS LOCATED AT THE SOUTHEAST  
SECTION CORNER AND THE NORTHEAST SECTION CORNER OF SAID SECTION  
AND WITH ALL BEARINGS SHOWN HEREON RELATIVE THERETO.
- 2) COORDINATES SHOWN ARE COLORADO STATE PLANE (NORTH ZONE) NAD 83.
- 3) ELEVATIONS ARE BASED UPON NGS OPUS SOLUTION NAVD 88 DATUM.
- 4) THE NEAREST EXISTING WELL IS: UPV 23-1614, 317' NORTHWEST.
- 5) SEE LOCATION DRAWING FOR ALL IMPROVEMENTS WITHIN VISIBLE  
IMPROVEMENTS LIMIT.
- 6) THE LOCATION FALLS IN CROP LAND.



0 1000

Scale: 1" = 1000'



David C. Holmes  
Professional Land Surveyor Registration No. 32828  
State of Colorado

JOB #: 100286

Completed 11/23/2010